



Grow N Up 2017 GNU Qwikfold Maxi Slide Instruction Manual

[Home](#) » [Grow n up](#) » Grow N Up 2017 GNU Qwikfold Maxi Slide Instruction Manual 

Contents

- 1 [Grow N Up 2017 GNU Qwikfold Maxi Slide](#)
- 2 [TO ASSEMBLE](#)
- 3 [TO FOLD FOR STORAGE](#)
- 4 [LIMITED WARRANTY](#)
- 5 [Documents / Resources](#)
- 6 [Related Posts](#)



Grow N Up 2017 GNU Qwikfold Maxi Slide



DO NOT DISCARD. IMPORTANT LITERATURE. PLEASE READ AND FOLLOW INSTRUCTIONS CAREFULLY AND IDENTIFY ALL PARTS BEFORE ASSEMBLY. KEEP THIS MANUAL FOR FUTURE REFERENCE.

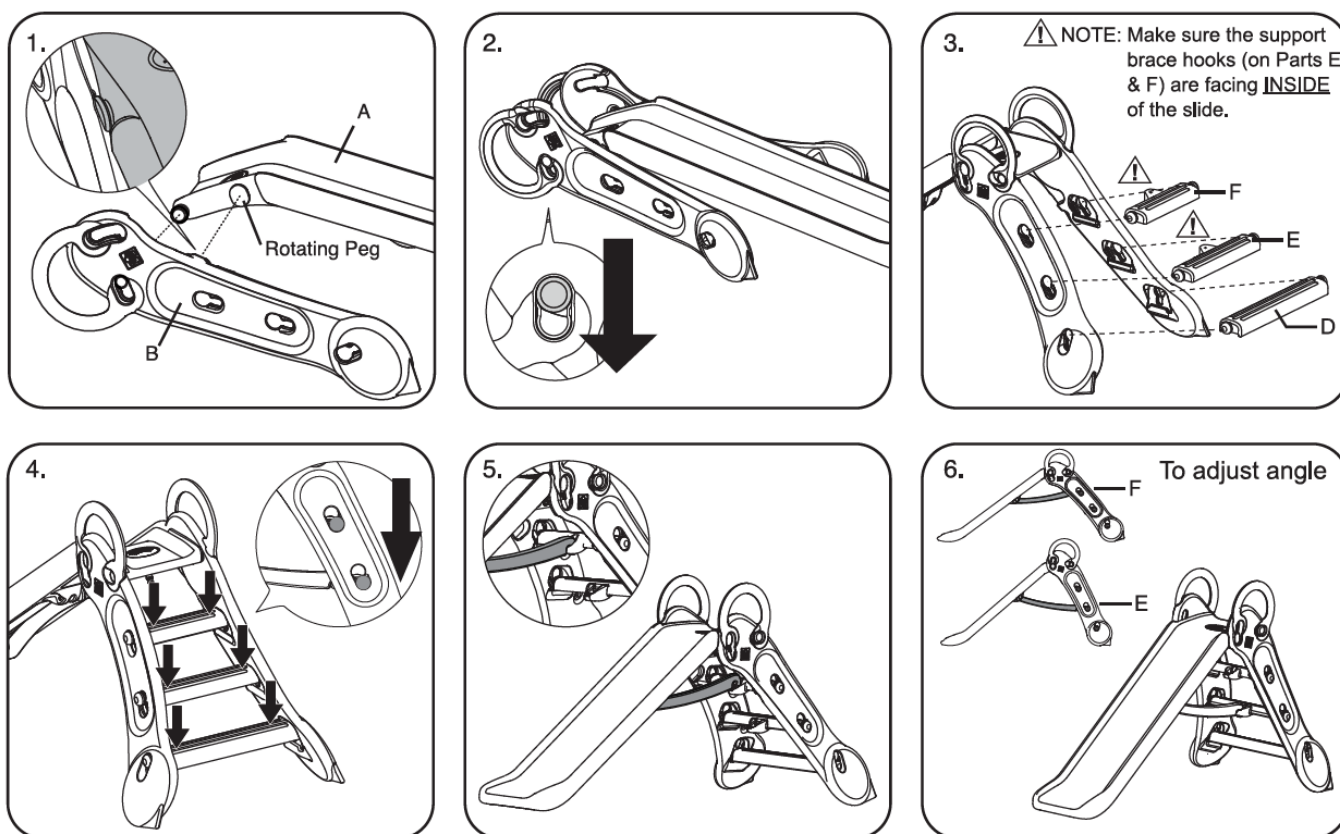
CAUTION: To avoid serious injury- do NOT install this ~product on a hard surface. Fall onto hard surfaces could result in head or other serious injuries. Never put on concrete, asphalt, wood, packed earth or other hard surfaces. Carpet over hard floors may not prevent injury.

PARTS LIST		
#	DESCRIPTION	QTY
A	Slide Chute with support brace	1
B	Right Leg	1
C	Left Leg	1
D	Step 1	1
E	Step 2	1
F	Step 3	1

- Warning. For family and domestic use only. Suitable for indoor and outdoor use. Use water sprinkler function only during outdoor.
- This item should be used on flat areas only.
- Place this product on level ground and at least 2 meters (6.5 feet) away from a fence, building, overhead branches, laundry lines or electrical wires.
- NEVER attached any materials that are not specifically designed for use with this product, such as (but not limited to) jump ropes, clothes lines, pet leashes, cables and chairs. These pose potential strangulation hazards.

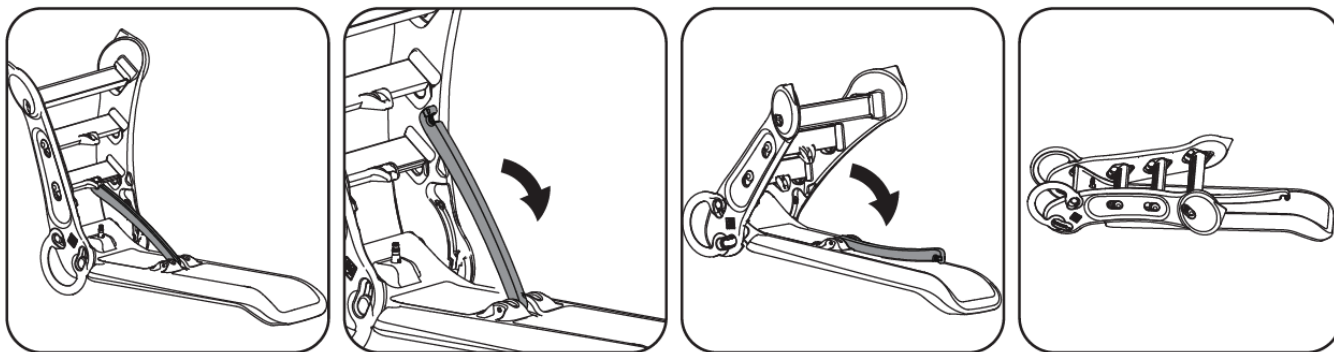
- Instruct children on proper use of this product, only after properly installed and assembled, and not in any manner other than intended. Adult supervision required at all time. DO NOT leave children unattended.
- DO NOT allow children to climb on the product when the product is wet. Slippery can results in slip or potential fall.
- DO NOT allow children to wear loose-fitting clothing including ponchos, scarves and garments with drawstrings. Well fitting shoes must be worn at all time.
- When temperatures fall below 32°F /0°C, outdoor use of this product is not recommended. In extreme cold, plastic materials lose resilience and may become brittle and crack upon impact. Store product in a warmer, protected place.
- It is recommended to place the slide out of direct sunlight to reduce the likelihood of serious burns and injure child's eyes. A slide that faces north will receive the least direct sunlight.
- Slide feet first. Never head first.
- Maximum weight limit: 50 kg (110 lbs) per child. Limit one child (1) at a time.

TO ASSEMBLE



1. Remove the product from the package. Hold slide chute (A) and insert the small peg to the hole, and the rotating peg into the inner recess of the right leg (B) as shown.
2. Repeat Step 1 to the left leg (C). Now, push the slide chute downwards to lock the small peg into the hole.
3. Unfold the slide assembly to a standing position. Attach the 3 steps (D-F) into the slots of the legs.
4. Apply force downwards to lock each peg into the leg slot. Ensure all pegs are snapped in and locked securely.
5. Attach the support brace (underneath the slide chute) to the steps assembly.
6. You can adjust the support brace position to transform the slide angles for different challenges.

TO FOLD FOR STORAGE



The folding and unfolding of this product must be performed by an adult.

1. Lay the slide on flat ground surface with chute facing down.
2. Unlock the support brace.
3. Lay down the support brace towards the slide chute.
4. Fold down the steps assembly and the slide is ready to store away.

FOR WATER PLAY

- Attach a 3/4" (19 mm) water hose to the nozzle of the water sprinkler (underside of the slide chute). After proper connection, turn on the tap or faucet for water play. After play, turn off the tap or faucet first before detaching the hose.
- Always disconnect the hose from the slide unit if water play is not required.

SAFETY AND MAINTENANCE

1. Make sure all parts are securely snapped together before use.
2. Please check the unit twice monthly during the usage season for tightness, and tighten as required. It is particularly important that this procedure be followed at the beginning of each season. Replace as needed. If not checked regularly, parts can be loose or missed and components can become detached and cause injuries.
3. If slide chute is exposed to direct sunlight, always check to make sure it is not too hot for children to use. If the slide chute is hot, pour cold water on the slide chute until it cools. Check slide chute periodically during use.
4. Clean the slide regularly with soapy water in order to avoid a build up of static electricity.
5. DO NOT leave this item exposed to strong wind and inclement weather.

LIMITED WARRANTY


Our products are covered under warranty for a period of 1 year from the date of purchase, under normal use and service, against defective workmanship and material. If you have recently purchased this product and find it to be defective in anyway, kindly return it to the "Source of Purchase" for a Full Refund or Exchange. Should the product no longer be covered by your Purchase Receipt, or should you have any questions pertaining to our product, please call our Toll Free Customer Service for assistance. Keep a copy of the UPC Code with proof of purchase receipt for any future Warranty Service. Please retain packaging and assembly instructions for future reference.

Kong. MADE IN CHINA (SZ)

CUSTOMER SERVICE / ENQUIRIES

1-88-68-9898 service@grow-n-up.com www.grow-n-up.com

Documents / Resources

	<p>Grow N Up 2017 GNU Qwikfold Maxi Slide [pdf] Instruction Manual 2017 GNU Qwikfold Maxi Slide, 2017 GNU, Qwikfold Maxi Slide, Maxi Slide, Slide</p>
---	---

[Manuals+](#)