



GROTHE MV555310 ETA Funk Doorbell Buttons Radio Push Button Instruction Manual

[Home](#) » [GROTHE](#) » GROTHE MV555310 ETA Funk Doorbell Buttons Radio Push Button Instruction Manual 

GROTHE MV555310 ETA Funk Doorbell Buttons Radio Push Button Instruction Manual



Contents

- [1 Dear Customer](#)
- [2 Safety instructions](#)
- [3 Intended use](#)
- [4 Product description](#)
- [5 Power supply](#)
- [6 External power supply](#)
- [7 Pairing ETA Funk with receiver](#)
- [8 Installation](#)
- [9 Insert name tag](#)
- [10 Informations](#)
- [11 Guarantee and liability](#)
- [12 Declaration of Conformity](#)
- [13 Technical Data](#)
- [14 Documents / Resources](#)
 - [14.1 References](#)
- [15 Related Posts](#)

Dear Customer

With this device you have acquired a quality product which we have developed and produced for you with the greatest possible care and to the highest standards.

The statutory guarantee period applies.

Defects caused by improper handling, misuse or disregard of the installation and operating instructions are excluded from this guarantee.

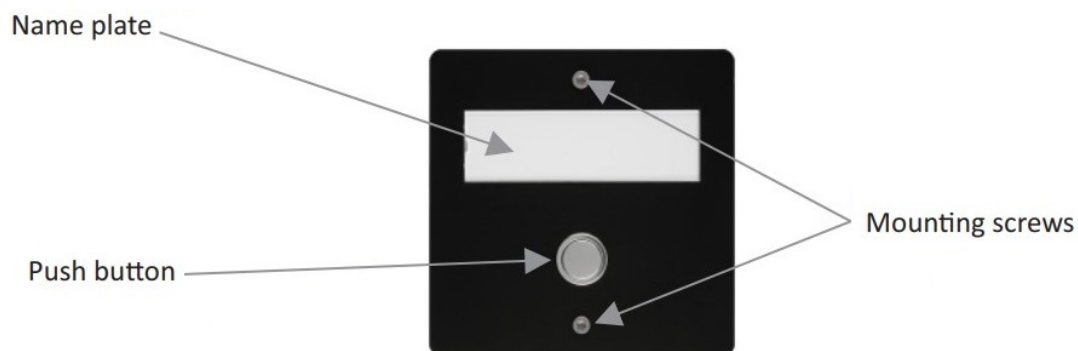
Safety instructions

Do not expose the ETA Funk to dripping or splashing liquid! Do not place any vessels filled with liquid on it! Do not cover it with objects or blankets, curtains, etc. and protect it from direct sunlight and naked flames!

Intended use

The ETA Funk combines an appealing look and proven MISTRAL radio technology. This wireless bell button can be used to control wireless gongs from the MISTRAL, ECHO and CALIMA series. The ETA radio is operated with batteries, but can also be operated with an external power supply.

Product description



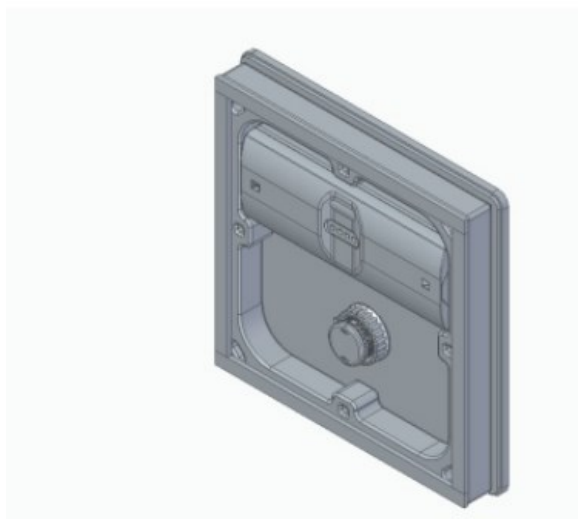
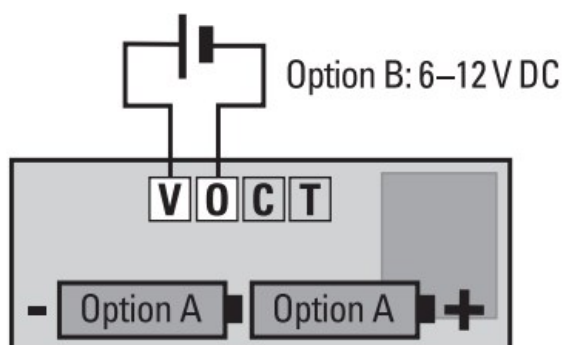
Power supply



To open the transmitter housing, place a sloed screwdriver in the groove on the transmitter housing one after the other on the right and left and turn it by 90°.

Two 1.5 V batteries (type AAA) are required for operation. Please note the polarity when inserting the batteries.

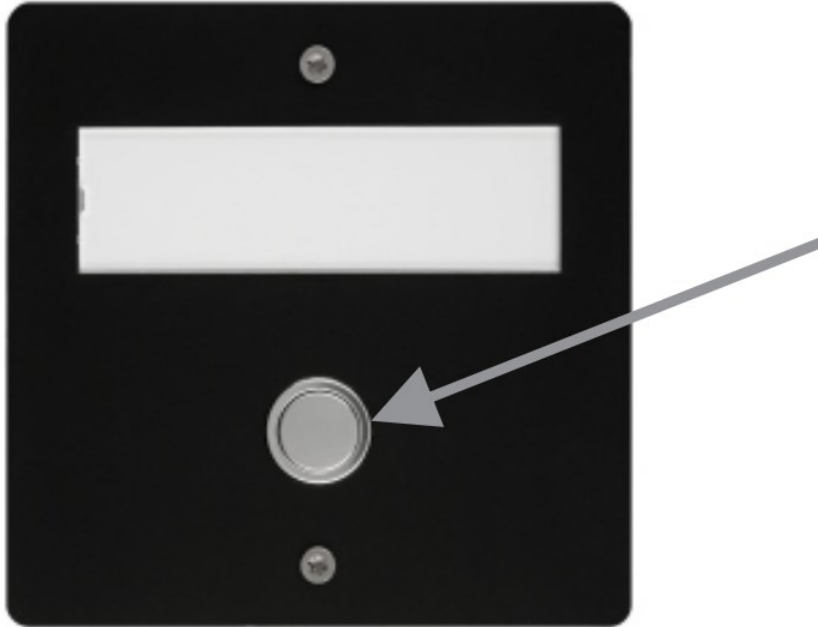
External power supply



The transmier can also be supplied with an external voltage (6 – 12 V DC). In this case please remove the baeries
0 => Negave pole
V => Posive pole

Then press the transmier housing back into the mount.

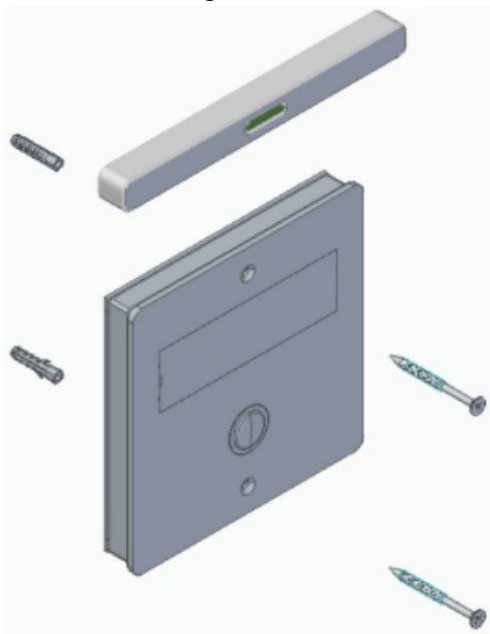
Pairing ETA Funk with receiver



Put the MISTRAL, ECHO or CALIMA receiver into pairing mode. Please refer to the instrucons for the relevant recipient. Operate the buon on the ETA radio. The ETA is paired with the receiver.

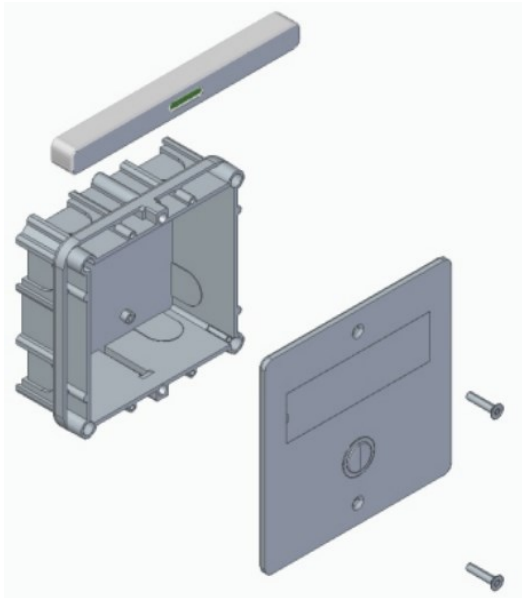
Installation

Surface mounng variant



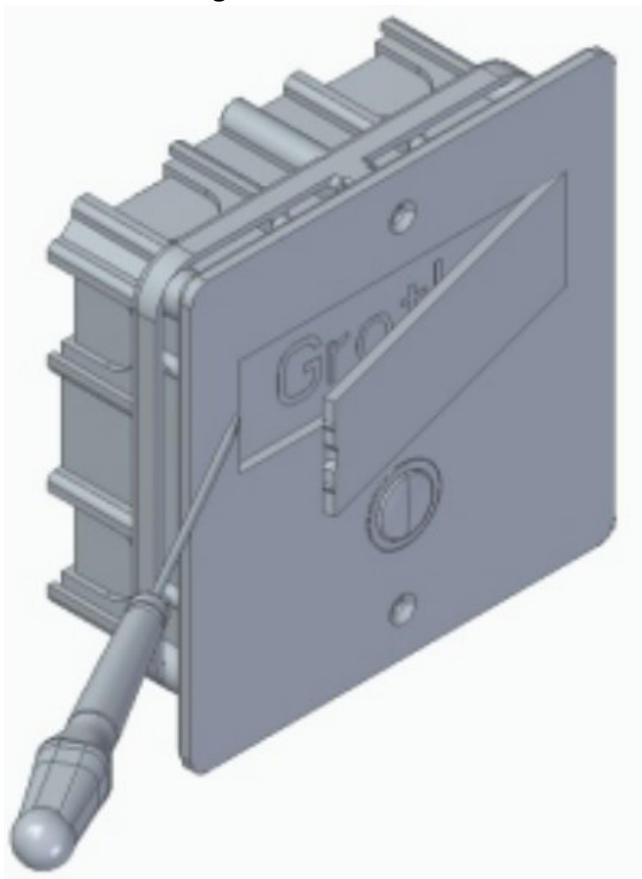
Align the surface-mounted adapter with the masonry using a spirit level and fasten it with the fastening material supplied.

Flush mounng variant



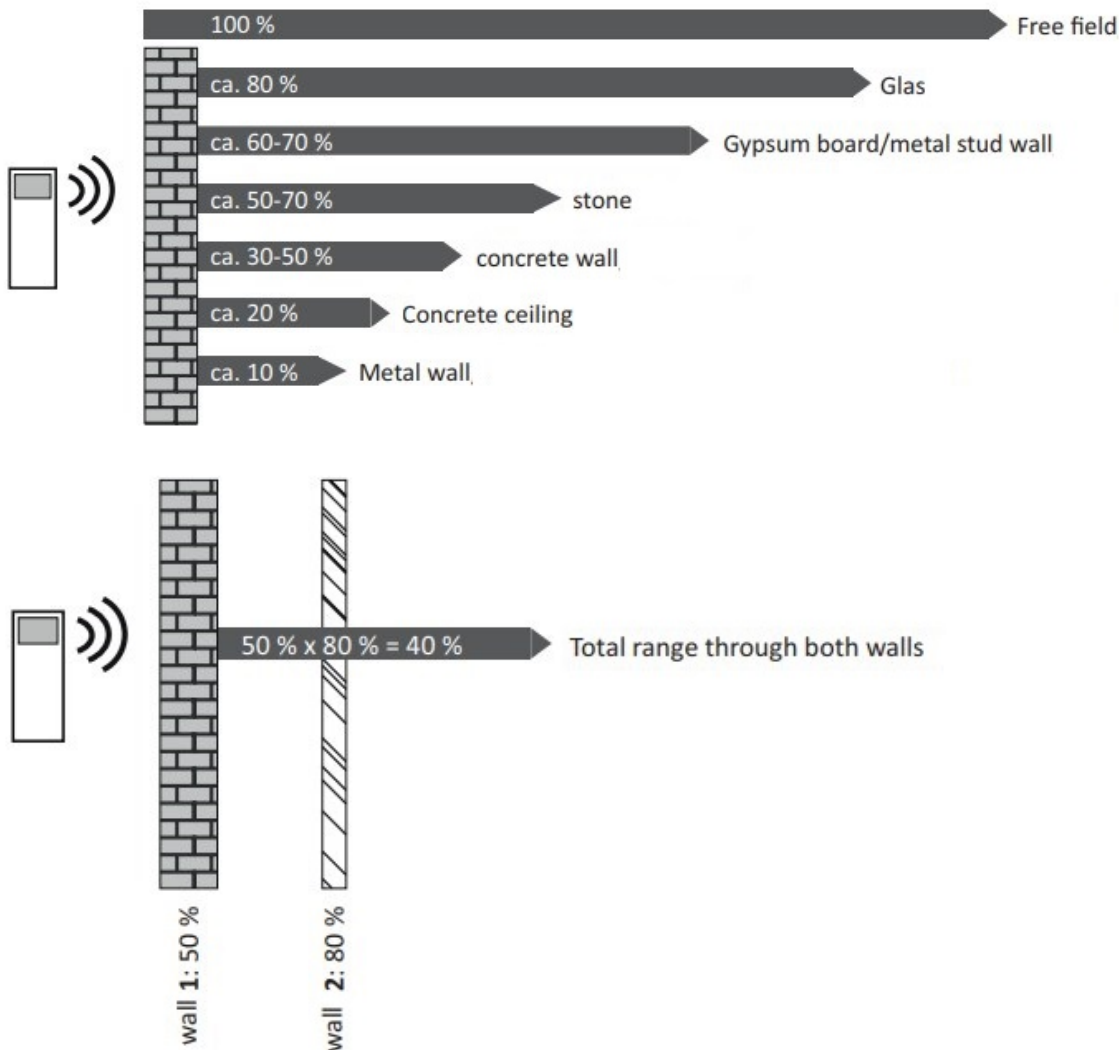
Insert the flush-mounted box into a mortar bed in the masonry using a spirit level and fix the storey plate to the flush-mounted box with the screws supplied.

Insert name tag



Open the Plexiglas cover with a screwdriver, insert the name tag inlay into the recess provided and carefully insert the Plexiglas cover.

Informations



The range of the ETA Funk is approx. 250 m if unobstructed and if the transmitter is installed in accordance with the instructions. Walls, doors, metal components etc. may reduce the range significantly. See illustration below

Note: the range can be significantly reduced with flush mounting, depending on the nature of the wall e.g. reinforced concrete.

Guarantee and liability

GROTHER GmbH chimes are produced using modern technology and are subjected to one hundred percent quality control. If a defect nonetheless occurs in your device, GROTHE GmbH provides a guarantee with the following scope

1. Our guarantee includes subsequent improvement or replacement delivery of a device, if it verifiably has functional or material defects
2. The guarantee does not cover natural wear and tear or transport damage. It also does not cover damaged caused by disregard of the installation instructions or improper installation. The guarantee automatically expires if the device was opened after the fault diagnosis
3. The guarantee period is 24 months from purchase of the device by the consumer. Compliance with the claim period must be verified by proof of date of purchase by means of the enclosed invoice, delivery note or similar document.

In case of a defect, please send the device with enclosed description of the defect to the address of the seller with

the abovenamed documents

Declaration of Conformity



We hereby declare that this product is in compliance with the essential requirements and the other relevant provisions of Directive 2014/53/EU.

Depending on the device type, tested to the respective relevant standards
EN 300220-2, EN 301489-1, EN 62368-1:2016, EN 55022, EN 50581

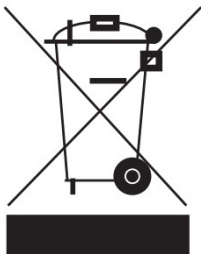
- RED Directive 2014/53/EU
- EMC Directive 2014/30/EU
- RoHS Directive 2011/65/EU
- WEEE Directive 2012/19/E

EC Declaration of Conformity: visit www.funkgong.de

Countries: for all EU countries

Transmission frequency: 868.35 MHz

E-waste does NOT belong in the domestic waste!



Electrical appliances bearing this mark must be collected separately and reused in an environmentally sound manner (in accordance with the European Waste Electrical and Electronic Equipment Directive (WEEE) and its transposition into national law), German Act for Electrical and Electronic Equipment, Act on the Sale, Return and Environmentally Sound Disposal of Electrical Equipment and electronic devices (ElektroG))

Please dispose of unusable or discarded electrical appliances only via the return and collection systems or via the manufacturer or importer.

Technical Data


Radio frequency	868,35 MHz
Range	250 m in the free field *
Transmission power	> 25 mW
Power supply	2 Batteries 1,5 V (Type AAA)
External power supply	6 – 12 V DC
Degree of protection	IP 44
Use	Protected outdoor area
Temperature range	-10 bis 50 °C
Dimensions surface mounting	127 x 130 x 17 mm
Dimensions flush mounting	127 x 130 x 52 mm

Walls, doors, metal components etc. may reduce the range significantly!

GROTHER GmbH
Löhestraße 22
D – 53773 Hennef
+49 2242 8890 56
service@grothe.de
www.grothe.de



Documents / Resources

	<p>GROTHER MV555310 ETA Funk Doorbell Buttons Radio Push Button [pdf] Instruction Manual</p> <p>MV555310 ETA Funk Doorbell Buttons Radio Push Button, MV555310, ETA Funk Doorbell Buttons Radio Push Button, Buttons Radio Push Button, Push Button</p>
---	---

References

- [Funkgongs](#)
- [Startseite | Grothe](#)