



## GROHE Quickfix Basin Mixer Instruction Manual

[Home](#) » [GROHE](#) » GROHE Quickfix Basin Mixer Instruction Manual 

### Contents

- [1 GROHE Quickfix Basin Mixer](#)
- [2 Product Information](#)
- [3 Product Usage Instructions](#)
- [4 Caution](#)
- [5 Installation](#)
- [6 Documents / Resources](#)
- [7 Related Posts](#)



**GROHE Quickfix Basin Mixer**



## Product Information

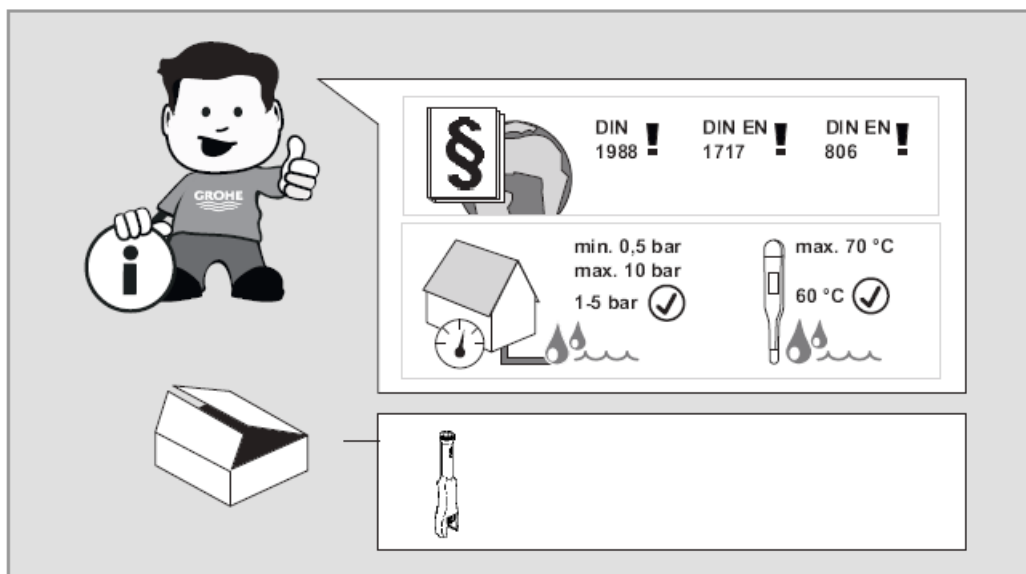
The product is designed to provide users with a convenient and efficient solution for various tasks. It is equipped with advanced features and functionalities to enhance user experience.

## Product Usage Instructions

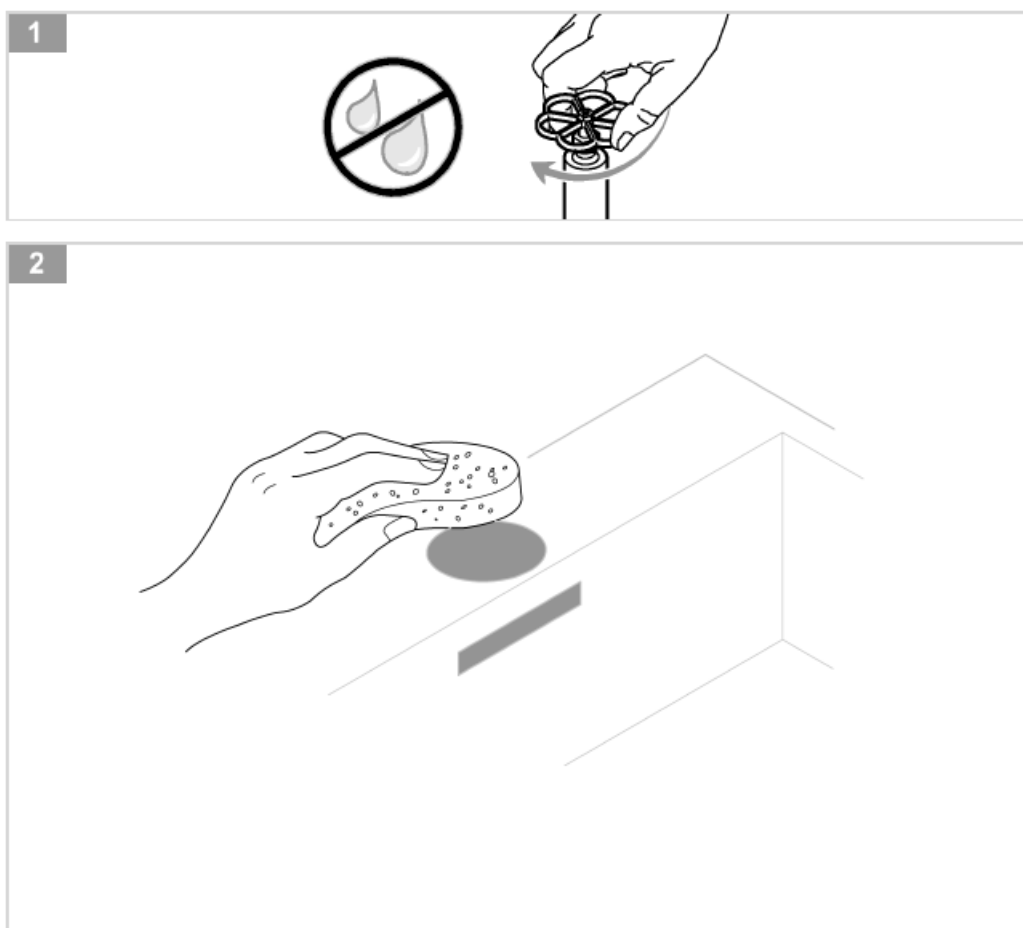
1. Begin by ensuring that the product is properly connected to a power source.
2. Next, familiarize yourself with the product's controls and buttons.
3. To turn on the product, locate the power button and press it firmly.
4. Once the product is powered on, you will see a display screen indicating its readiness.
5. To perform a specific task, refer to the user manual for detailed instructions on the different functions and settings available.
6. Use the appropriate controls or buttons to navigate through the product's menu and select your desired options.
7. When using the product, ensure that you follow the recommended safety guidelines provided in the user manual.
8. After completing your task, properly power off the product by pressing the power button again.
9. Disconnect the product from the power source and store it in a safe place when not in use.

Please note that these are general usage instructions. For specific guidance on using certain features or troubleshooting issues, refer to the detailed user manual provided with the product.

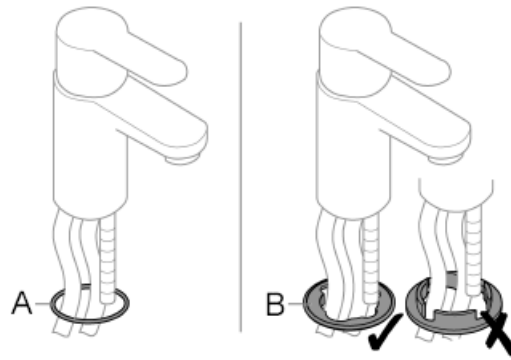
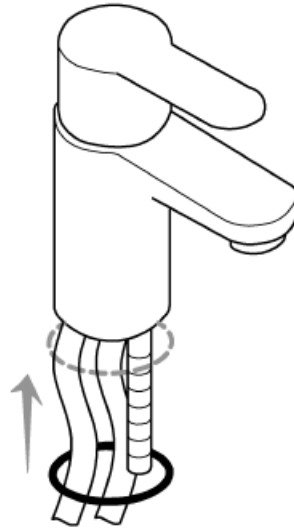
## Caution



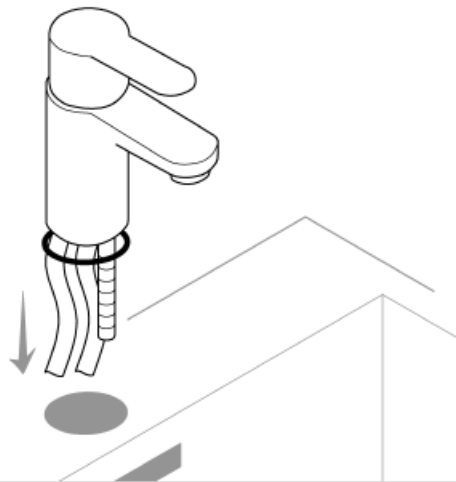
## Installation

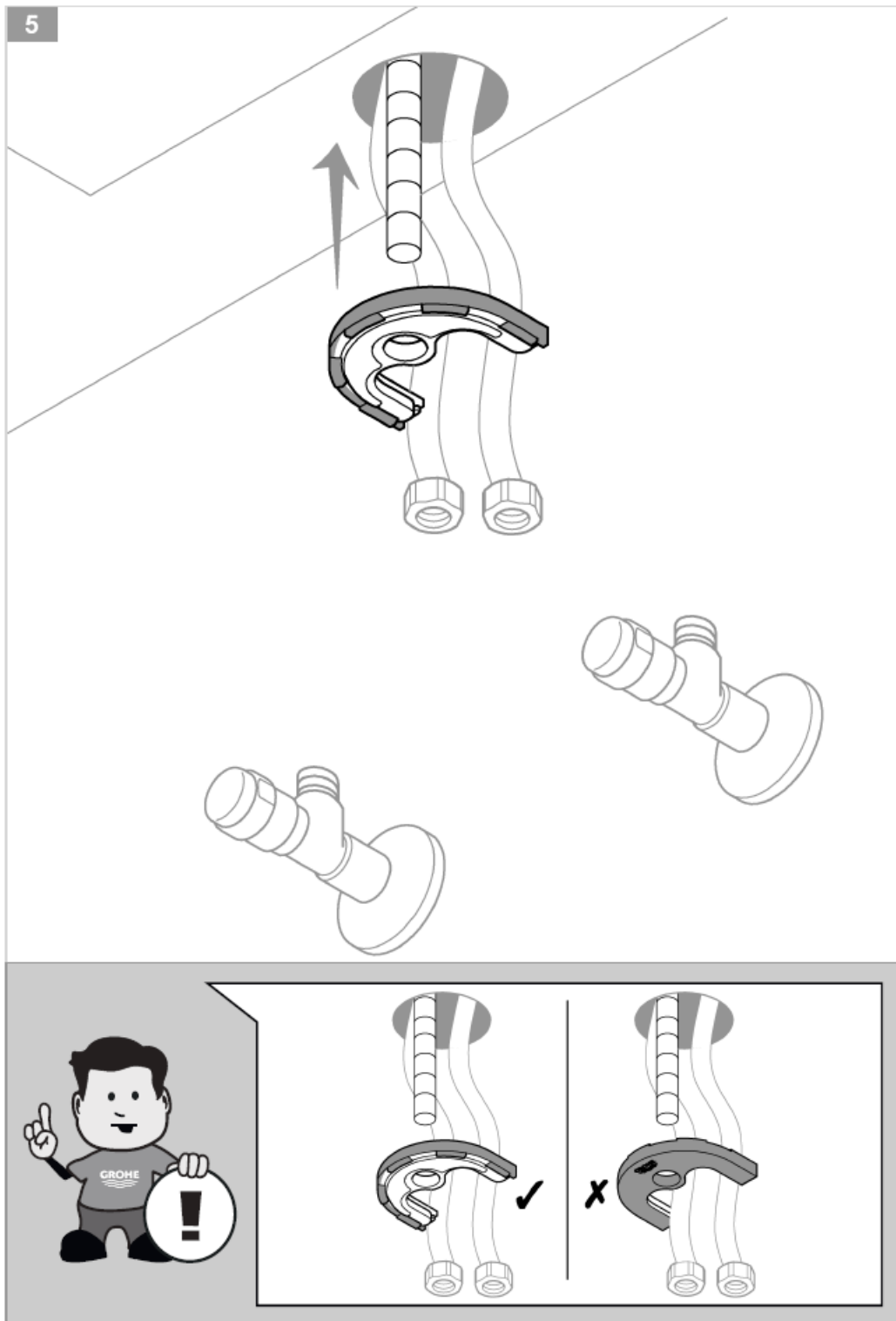


3

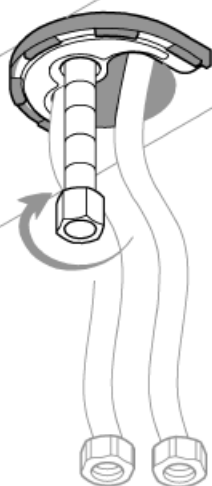


4





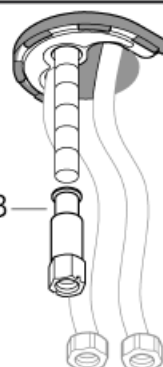
6



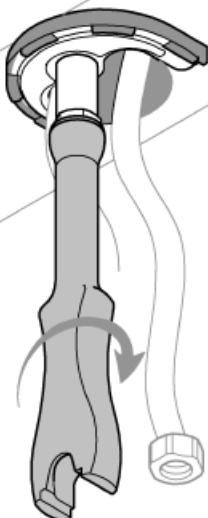
A



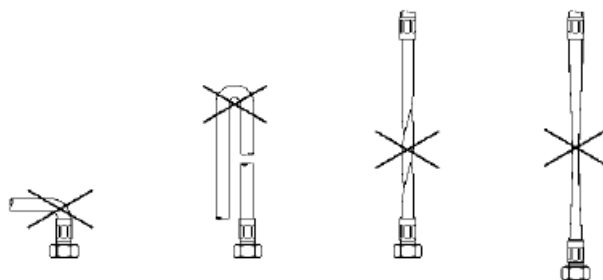
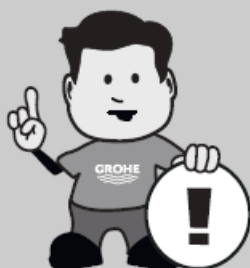
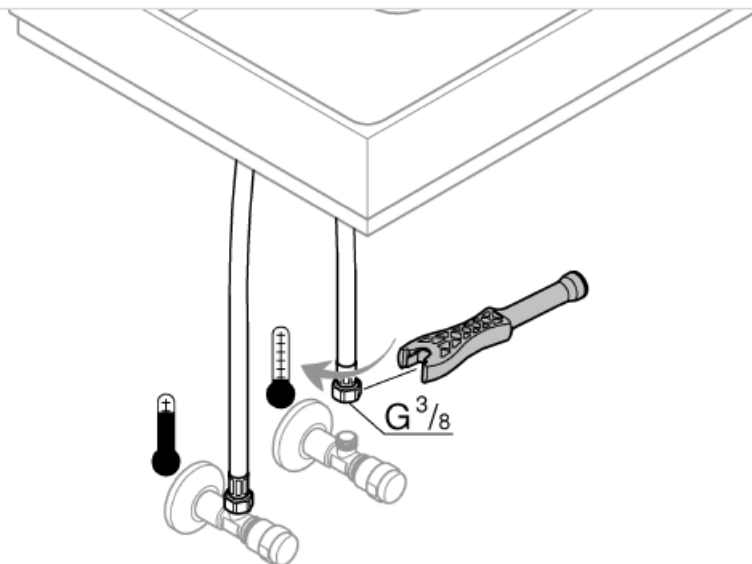
B



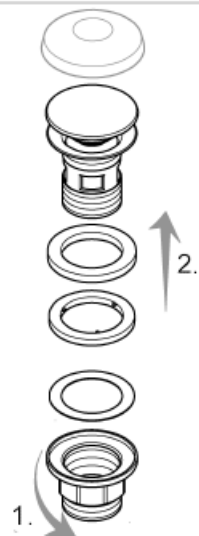
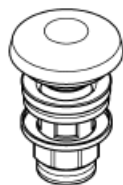
7

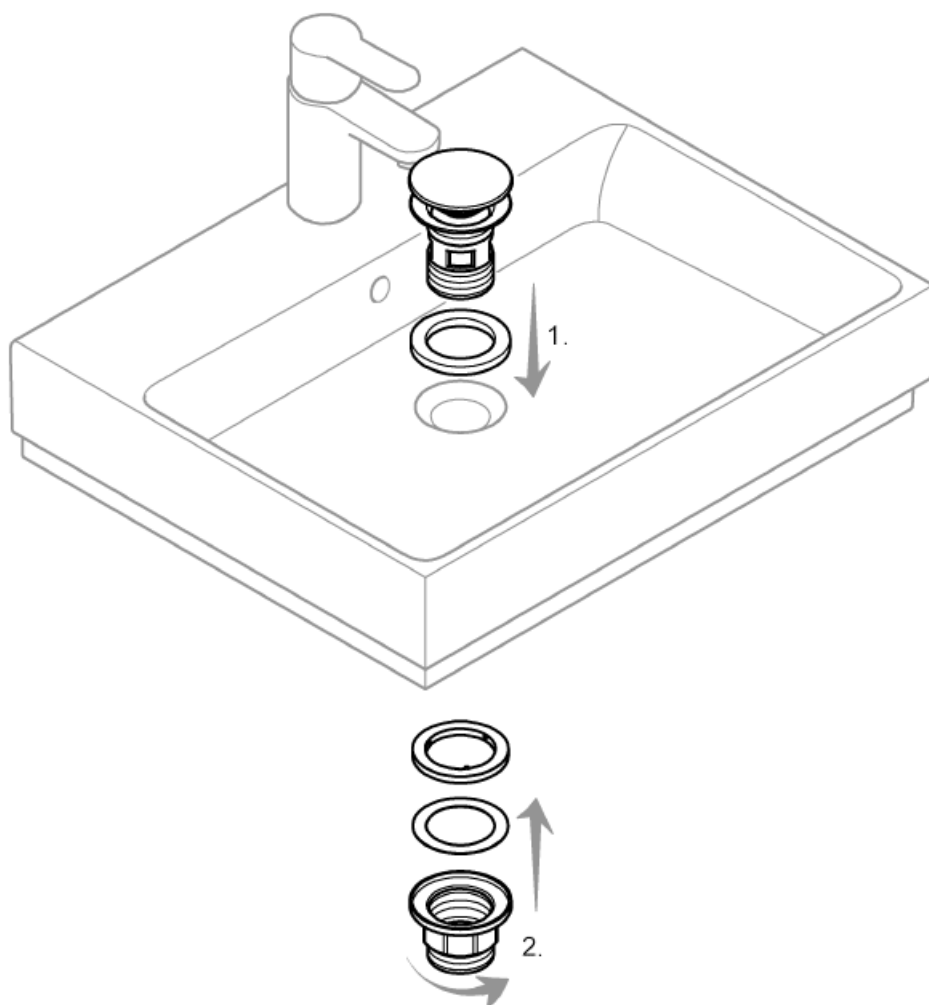


8



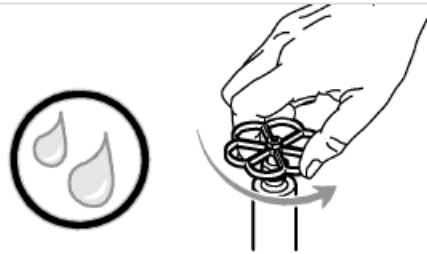
9



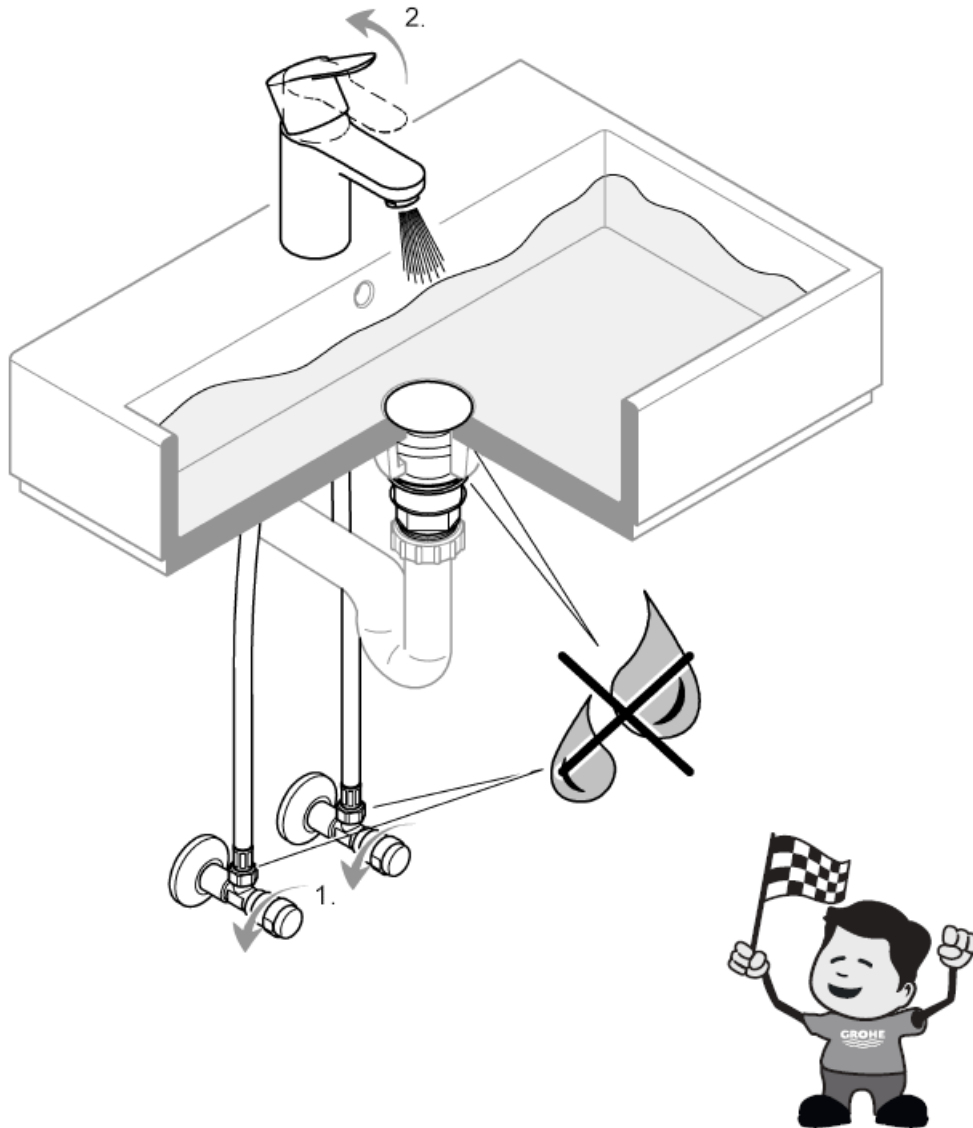




11



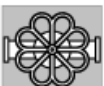
12



- Installation must be performed in compliance with applicable local construction and plumbing regulations. If in doubt, contact an expert.



- Before installation, water should be rinsed through the pipe to remove any residue. Damage on the product can be avoided.



- Before changing the fitting switch off main shut-off valve.

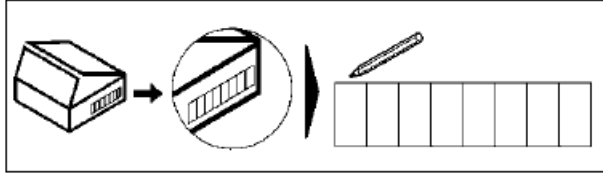


“CAUTION!

Do not overtighten screw connections, even with the seal inserted, to avoid damage.”



Check at regular intervals to make sure that the installation is not leaking.



DESIGN + ENGINEERING GROHE GERMANY

99.1638.131/ÄM252731/05.22

[www.grohe.com](http://www.grohe.com).

## Documents / Resources



[GROHE Quickfix Basin Mixer](#) [pdf] Instruction Manual  
235512432, Quickfix Basin Mixer, Basin Mixer, Mixer