

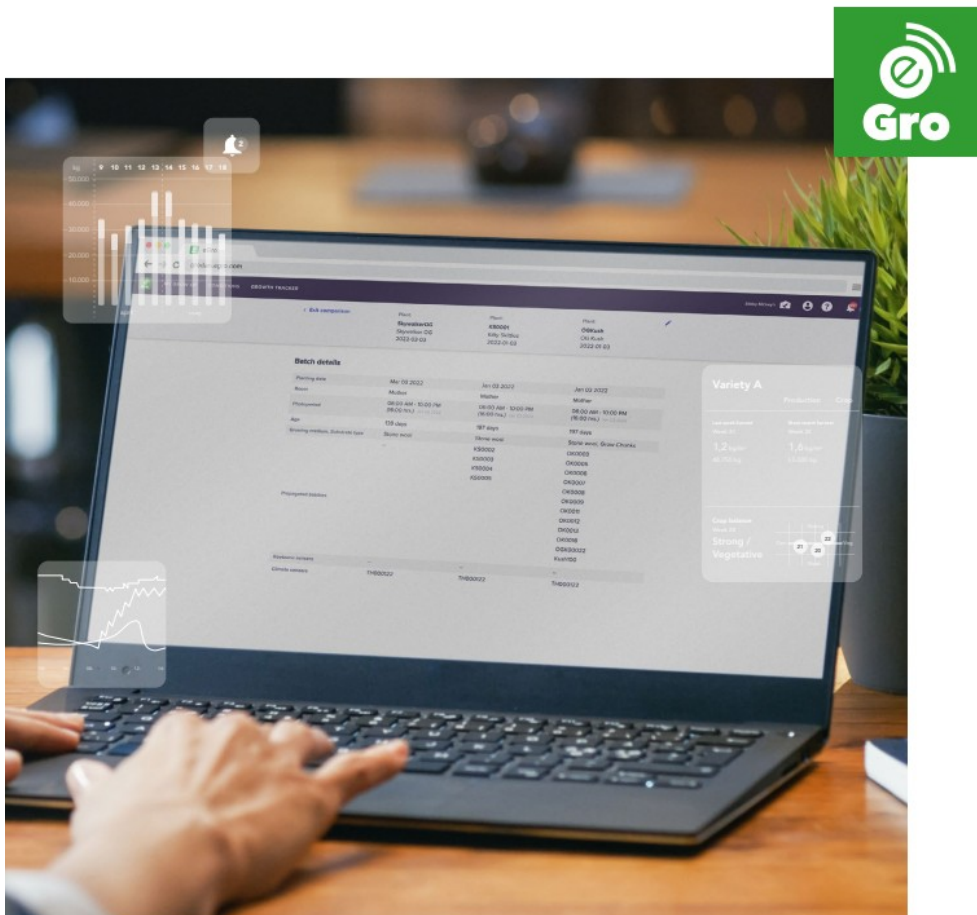
## Grodan e-Gro Growth Tracker Module User Guide

[Home](#) » [Grodan](#) » Grodan e-Gro Growth Tracker Module User Guide 



**Grodan<sup>®</sup>**

How to guide  
e-Gro Growth Tracker Module  
Part 2  
User Guide



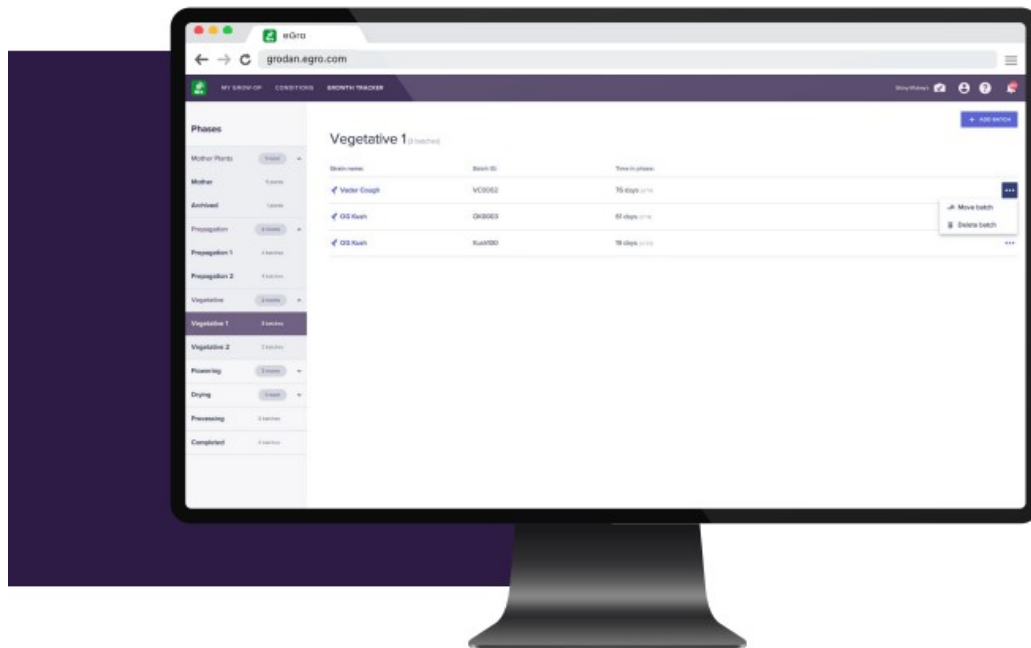
If you have any questions, please contact [egro.support@grodan.com](mailto:egro.support@grodan.com)

## Contents

- 1 Introduction
- 2 The Growth Tracker Module
- 3 How to set up comparisons:
- 4 How to leverage the Growth Tracker Module
- 5 Documents / Resources
  - 5.1 References

## Introduction

In Part 1 of this 'How to' Guide, we told you that the Growth Tracker Module gives you an overview of all the mother plants and batches in your facility at room level at the touch of a button, so you can track them throughout the entire growing cycle and post-harvest process. It enables you to zoom in to gain an at-a-glance insight into the status, specifications and performance of each batch. Moreover, it allows you to compare the performance of different batches to analyze what works – and what doesn't – as the basis for continuous optimization. Here, in Part 2, we now show you how to use the Growth Tracker Module to create a logbook of all your batches so that you can increasingly fine-tune your irrigation and crop steering strategies over time, without having to keep 'reinventing the wheel'. This fast-tracks you to tangible improvements in quality, production levels and consistency. And the good news is, you can start using the Growth Tracker Module at any time in the growing cycle!



## The Growth Tracker Module

In your MJ growing facility, the decisions you make today have a major impact on your results tomorrow. Every action you take – from the adjustment of day/night temperature, humidity, light intensity, irrigation volume and frequency, to the timing and the way you defoliate your plants – steers the plant's physical growth response. Based on a combination of automatic sensor readings and manual data input, the Growth Tracker Module helps you to build up a record of precisely what you have done with each mother plant and batch in each room on their journey through your facility, right through to the post-harvest phase.

Moreover, you can start using the Growth Tracker Module at any time in the growing cycle. For example, if you first add a batch at the vegetative stage, you can manually add the relevant historical data from the previous stages retrospectively to ensure you have the complete picture.

The resulting logbook of information provides a wealth of data about the status, specifications and performance of each batch for analysis and optimization purposes. Therefore, the Growth Tracker Module ensures that you retain and extract the maximum amount of knowledge every step of the way, turning raw data into actionable insights that have a fast and effective impact on your future success. But how do you get started?

### Comparing batches directly

Thanks to the 'Compare' feature, you can compare up to three separate batches – from different facilities, of different strains and in different phases if you wish – to drill down into the details and see whether the changes you made to your irrigation or crop steering strategies had a positive or negative impact. You can then leverage those insights to continuously fine-tune your strategy for future batches. As a result, this makes recipe creation a lot easier which means that you no longer have to keep 'reinventing the wheel'.

×

## Compare

You can compare up to 3 mother plants from any strain.

**Mother plant 1**
Facility:

Sticky Mickey's

Strain:\*

Skywalker OG

Plant:\*

SkywalkerOG (Mother plants)

**Mother plant 2**
Facility:

Search

Sticky Mickey's

Sticky Ricky's

Plant:

Search

Clear

**Mother plant 3**
Facility:

Search

Strain:

Search

Plant:

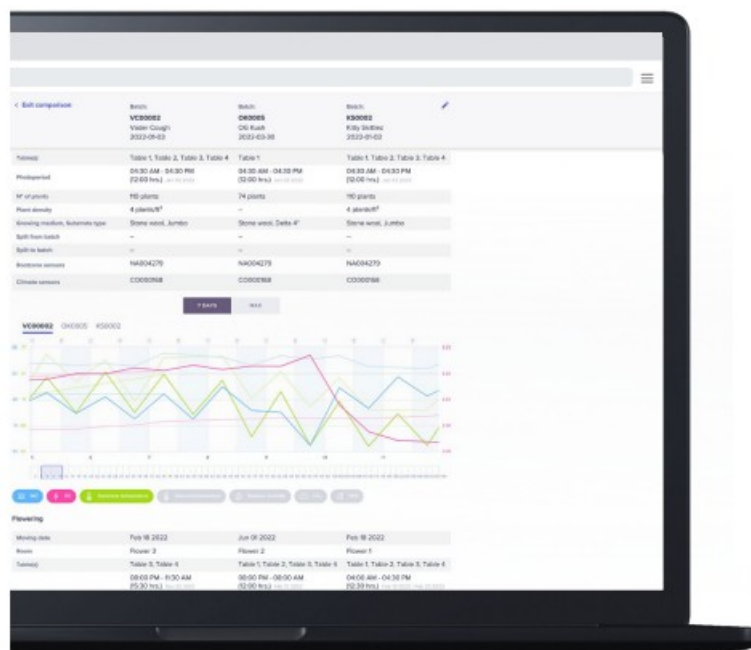
Search

Clear

CANCEL

COMPARE

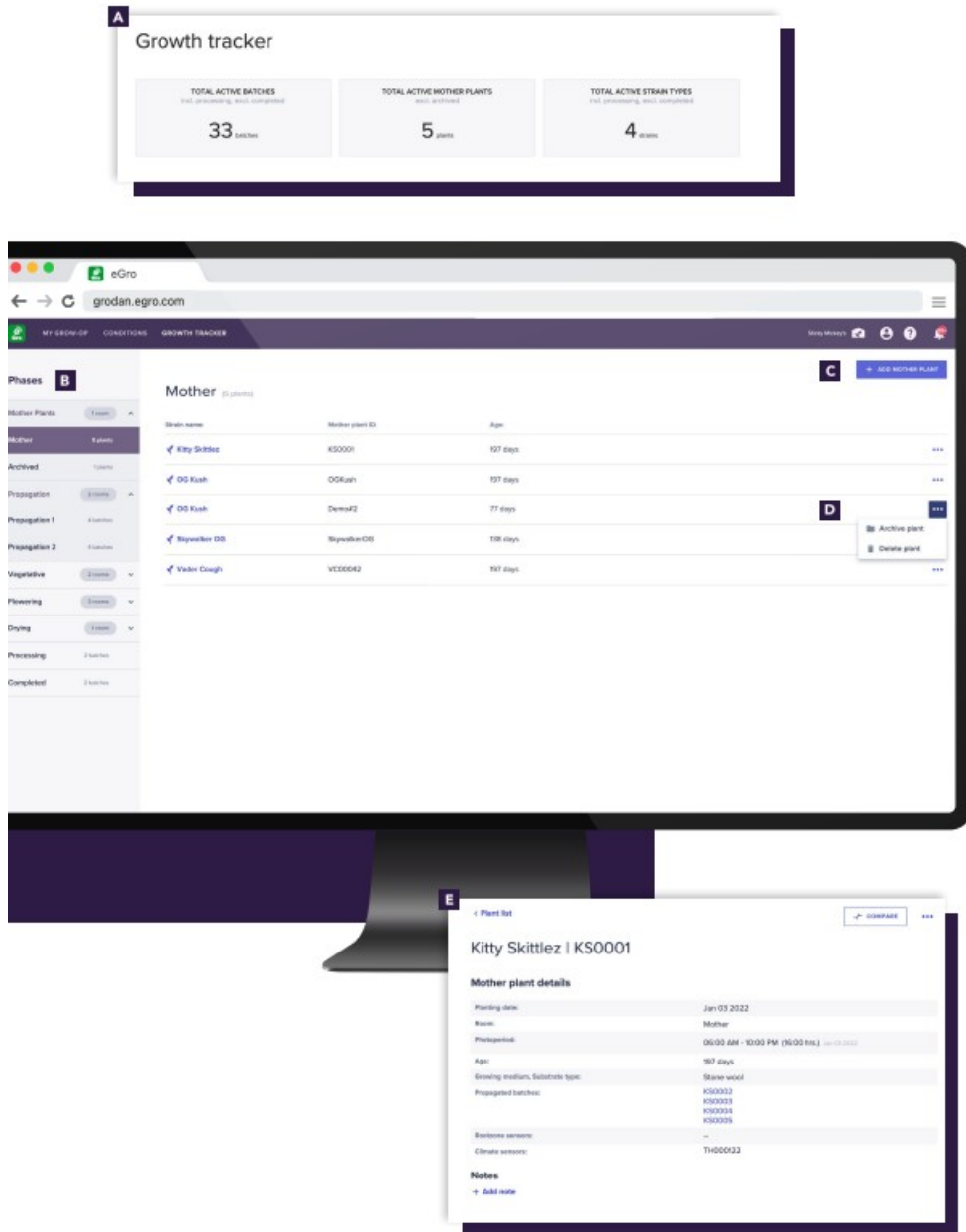
## How to set up comparisons:



- Select a batch from the menu on the left-hand side of the screen.
- Click on the strain name in the main part of the screen.
- Click on the 'Compare' button in the top-right of the screen.
- Then select the desired facility, strain and batch (phase) for up to two more batches and then click on

‘Compare’.

- All of the information for all the selected batches will be displayed side by side so you can see the differences at a glance.
- Simply scroll down to see the details, including interactive color-coded graphs in which you can click to display/hide your preferred parameters and use the slider to see the changes over time.
- Click on the ‘pencil’ icon at the top-right to change your batch selection.



## How to leverage the Growth Tracker Module

The Growth Tracker Module offers comprehensive functionalities to support in-depth analysis and comparisons. In a nutshell, this is how it works:

### A – Start screen:

At the top, the start screen displays at a glance the total number of active batches, active mother plants and active strain types that are currently being monitored in Growth Tracker.

### B – Phases:

On the far left, you can see an overview of all the phases at your facility – from mother plants through to

processing and completed – and in how many rooms you are currently tracking plants or batches in each phase.

- Click on a phase to reveal a drop-down menu showing a list of plants/batches in that phase.
- Click on a plant or batch to display basic details in the main part of the screen: Strain Name, Mother Plant/Batch ID and Age/Time in Phase.

### **C – Add mother plant/batch:**

You start by adding mother plants or batches to the Growth Tracker Module by clicking on the relevant phase from the list on the left-hand side followed by the 'Add Mother Plant / Add Batch' button at the top- right of the screen. You are then asked to enter various details manually, including the mother plant IDs in the case of a new batch.

- You can add multiple mother plants or batches simultaneously by clicking on 'Add batch or mother plant' at the bottom of the list.
- Click on 'Review' to see an overview of the data entered. Click on 'Edit' to make any changes or 'Add' to confirm.

**Please note:** You can add a batch in any phase of the process and enter historical data for the previous phases manually to build up a complete picture.

### **D – '3-dots' icon on the main page:**

- For mother plants: Click on the 3-dots icon to archive or delete the plant. The archived plants will then be listed as 'Archived' in the list of phases.
- For batches: Click on the 3-dots icon to move the batch to the next phase of the growth cycle or to delete the batch.
  - ☒ In the case of 'Move batch': You will then be asked to enter the relevant data.
  - ☒ Here, you have additional options including 'Split batch', 'Stay in propagation' and 'Create mother plant'
  - ☒ Click on 'Review' to see an overview of the data entered. Click on 'Edit' to make any changes or 'Add' to confirm.

### **E – Detail page:**

Click on the strain name to view the detail page, where you can dive deeper into the data. This includes:

- At-a-glance details of the growth cycle and other batch details, as well as a graph showing 7-day and min/max values for irrigation and climate parameters based on data from elsewhere in e-Gro.
- The ability to add your own notes and images.
- At the top-right of the Detail page, you can click on:
  - ☒ 'Compare' to set up comparisons between up to three different batches (see box in this 'How to' guide for more details)
  - ☒ 'Move batch' to move the batch to the next phase by entering the relevant data
  - ☒ The '3-dots icon' to delete a batch from the system or to export data to a CSV file for use in Excel.

### **The benefits of the Growth Tracker Module**



At the touch of a button, the Growth Tracker Module allows you to track and monitor all the mother plants and batches in your facility at room level, throughout the entire growing cycle and post-harvest process. You can zoom in to gain an at-a-glance insight into the status, specifications and performance of each batch. As the basis for continuous optimization, you can even compare the performance of different batches to analyze what works... and what doesn't. This user-friendly online registration system enables you to fine-tune your irrigation and crop

steering strategies as the basis for continuous improvements in quality, yield and consistency. In other words, the Growth Tracker Module turns raw data into actionable insights that you can leverage to accelerate your success. All these insights are readily available for you 24/7, optimized for access via your smartphone, tablet and desktop. Our Grodan green experts are happy to discuss how you can start using the Growth Tracker Module in your greenhouse or how to take your current crop steering strategy to the next level. Visit [www.grodan101.com/e-Gro](http://www.grodan101.com/e-Gro) for more information.

**Disclaimer:** Neither Grodan nor its employees are cultivators or manufacturers of cannabis. Neither GRODAN nor its employees advocate for or encourage the cultivation of marijuana. GRODAN and its employees shall only engage with those state-licensed or state-approved marijuana business who maintain active licenses and constant compliance with the respective state and local licensing authorities.

**Grodan**  
a division of ROCKWOOL  
8024 Esquesing Line  
Milton, Ontario L9T 6W3  
Tel.: 088-872-2476  
[info@grodan.com](mailto:info@grodan.com)  
[www.grodan.com](http://www.grodan.com)

Documents / Resources

	<p><a href="#">Grodan e-Gro Growth Tracker Module</a> [pdf] User Guide e-Gro, Growth Tracker Module, e-Gro Growth Tracker Module, Tracker Module, Module</p>
	<p><a href="#">Grodan e-Gro Growth Tracker Module</a> [pdf] User Guide e-Gro, Growth Tracker Module, e-Gro Growth Tracker Module, Tracker Module, Module</p>

References

-  [Grodan](#)
-  [e-Gro](#)