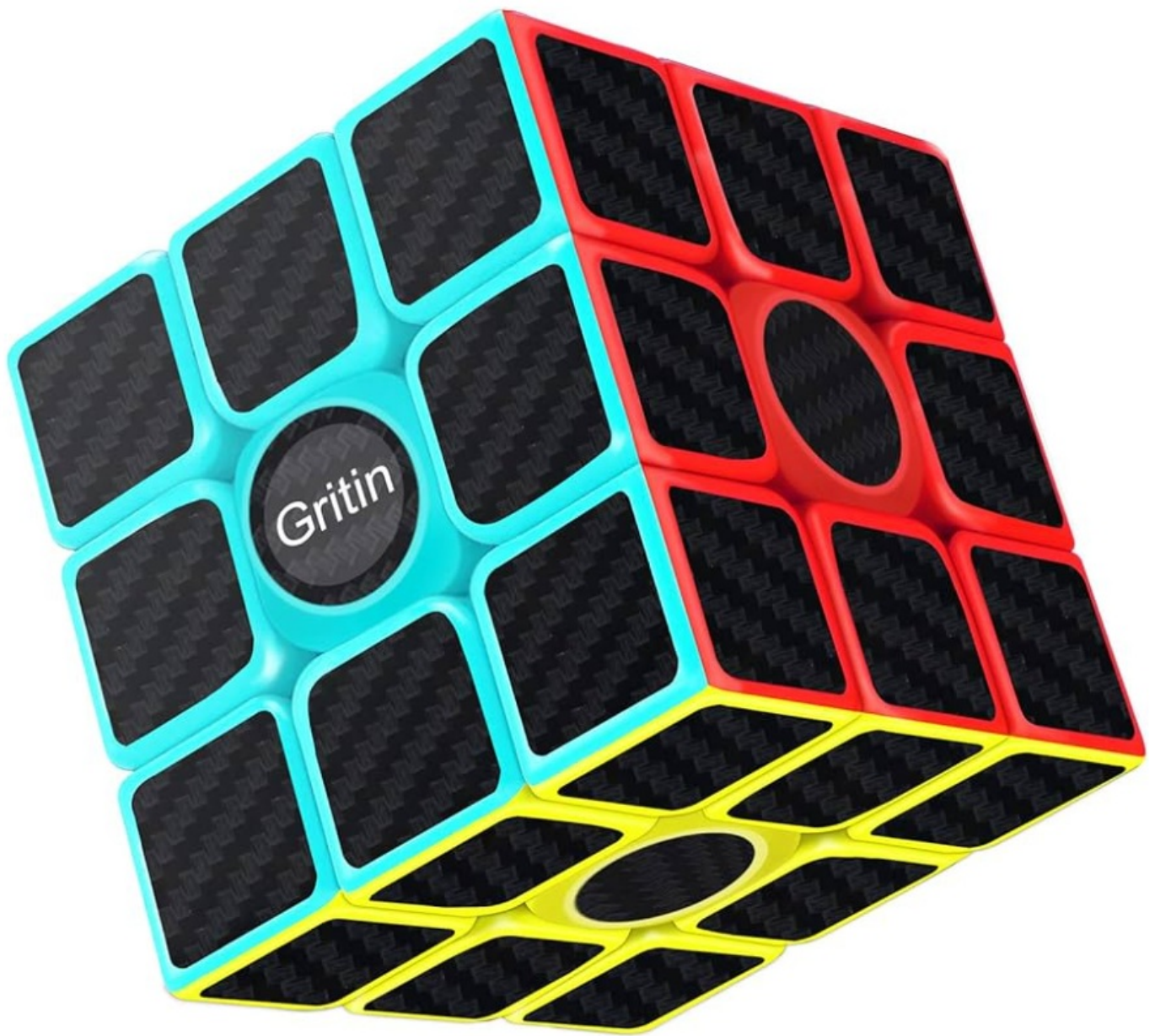




Gritin G3008 Magic Cube Glatter Speed Cube User Guide

[Home](#) » [Gritin](#) » Gritin G3008 Magic Cube Glatter Speed Cube User Guide 

Gritin G3008 Magic Cube Glatter Speed Cube

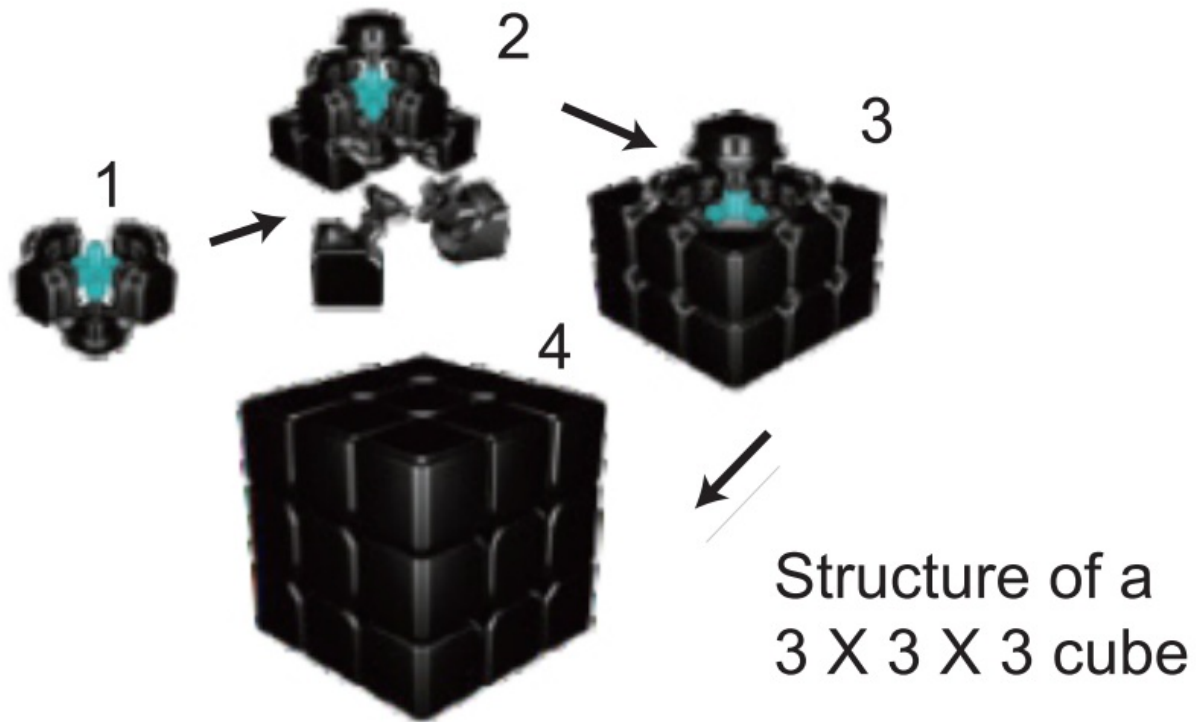


Contents

- [1 Cube Structure](#)
- [2 Notations](#)
- [3 Solution Guide](#)
- [4 Customers Support](#)
- [5 Documents / Resources](#)
 - [5.1 References](#)
- [6 Related Posts](#)

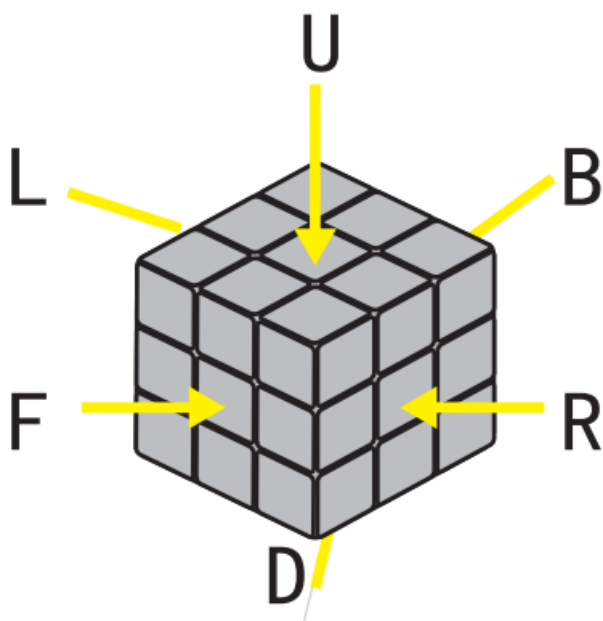
Cube Structure

A 3 X 3 X 3 cube consists of 26 small pieces that rotate on a 30 central axis. It has 6 center pieces with 1 color in each individual side, 12 edge pieces with 2 colors, and 8 corner pieces with 3 colors.



Notations

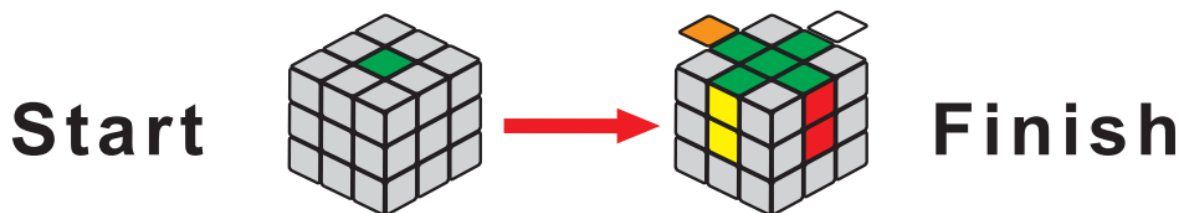
- **U**= Up
- **L**= Left
- **B**= Back
- **F**= Front
- **D**= Down
- **R**= Right



- The letter itself means a 90-degree clockwise turn, e.g. R.
- The letter followed by an apostrophe means a 90-degree anti-clockwise turn, e.g. R'.
- The letter followed by the number 2 means a 180-degree turn, e.g. R2.

Solution Guide

Step 1. Make a cross on the first layer



1. Move edge pieces on the bottom layer



The yellow arrow means that the dark gray layer turns 90 degrees in this direction, X 2 means that it turns 180 degrees in this direction.

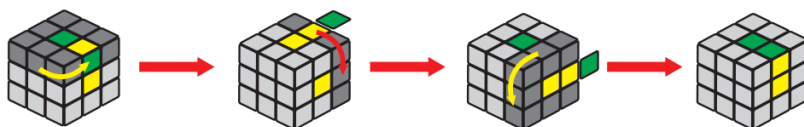
2. Move edge pieces on the bottom layer



3. Move edge pieces on the middle layer



4. Move edge pieces on the top layer



5. Move edge pieces on the top layer



(Note: If the edge pieces are not in the 4 standard positions as illustrated, please adjust the edge pieces to the standard positions and move them by following the instructions.)

Step 2. Move corner pieces to solve the first layer

When solving the corner pieces, please note that the 3 colors of each corner piece are respectively identical with the center piece color on its layer.

Start



Finish

1. Solve corner pieces on the bottom layer



2. Solve corner pieces on the bottom layer



3. Solve corner pieces on the bottom layer



Formula: L D' L' F' D' D' F

(Note: If the corner pieces are not in the standard positions as illustrated, please adjust the corner pieces to the standard positions and move them by following the instructions.)

Step 3. Solve edge pieces on the middle layer

Now put the solved layer upside down, and solve the edge pieces on the middle layer by using the formulas.

(When edge pieces are not in the standard positions, use the formulas to adjust edge pieces to the standard positions and solve by following the instructions.)

1. Solve edge pieces on the top layer



Formula: F U F U F U' F' U' F'

2. Solve edge pieces on the top layer



Formula: R' U' R' U' R' U R U R

3. Solve edge pieces on the middle layer



Formula: (R U U R' U) x 2 F' U' F

Step 4. Make a cross on the top layer

Note: Repeat this formula several times to make a cross on the top layer.



Formula: F R U R' U' F'



Finish State

Note: Hold the layer on which edge pieces need to be moved as the front layer (F).

Step 5. Solve the Top Layer

Note: Repeat this formula several times to make a cross on the top layer.



Formula 1: RU R' UR U2 R'

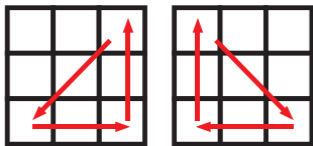
Formula 2: R' U' R U' R' U2 R

After making the cross on the top layer, repeat Formula 1 or Formula 2 twice to get the two states illustrated on the right and left. Repeat Formula 1 or Formula 2 once again to solve the top layer.

Step 6. Solve corner pieces on the top layer

Formula 1: RB' R F2 R' BR F2 R2

Formula 2: L' B L' F2 L B' L' F2 L2

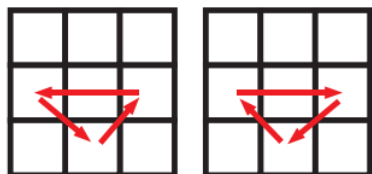


Use Formula 1 or Formula 2 once in any state during this process. Keep one corner piece unmoved and move the other 3 corner pieces.

Step 7. Solve edge pieces on the top layer

Formula 1: $RU' RUR UR U'R'U'R$

Formula 2: $L' U L' U' L' U' L' U LU L2$



Keep one edge piece unmoved during the whole process and move the other 3 edge pieces.



WARNING:

- Not suitable for children under 36 months.
- Children should use this product under parent's supervision.
- This product contains small parts that may cause choking hazards.

Product Name: MAGIC CUBE

Model: MF8807

Manufacturer: Shenzhen Teng Xun Zhan Yi Technology Co., Ltd.

Manufacturer Address: Room 302, Building 8, Yunlin Intelligent Park, Fada Road, Bantian Street, Long gang District, Shenzhen, Guangdong, China

Customers Support

TEL: 1-800-360-5881

EMAIL: support@igritin.com


WEBSITE: www.igritin.com

© Shenzhen Teng Xun Zhan Yi Technology Co., Ltd.

All rights reserved.

Gritin

Documents / Resources

	<p>Gritin G3008 Magic Cube Glatter Speed Cube [pdf] User Guide</p> <p>G3008 Magic Cube Glatter Speed Cube, G3008, Magic Cube Glatter Speed Cube, Cube Glatter Speed Cube, Glatter Speed Cube, Speed Cube, Cube</p>
---	--

References

- [User Manual](#)