



# GREISINGER GIR230NTC Panel Differential Temperature Controller Instruction Manual

[Home](#) » [GREISINGER](#) » GREISINGER GIR230NTC Panel Differential Temperature Controller Instruction Manual



## Contents

- [1 GREISINGER GIR230NTC Panel Differential Temperature Controller](#)
- [2 Product Information](#)
- [3 Introduction](#)
- [4 Introduction](#)
- [5 Electrical connection](#)
- [6 Connecting an input signal](#)
- [7 Connecting switching outputs](#)
- [8 Configuration of the device](#)
- [9 Switch points and alarm-boundaries](#)
- [10 Documents / Resources](#)
  - [10.1 References](#)
- [11 Related Posts](#)

# GREISINGER

**GREISINGER GIR230NTC Panel Differential Temperature Controller**



## Product Information

### Specifications

- **Model:** GIR 230 NTC
- **Version:** 1.4
- **Manufacturer:** GREISINGER electronic GmbH
- **Telephone:** 0049 9402 / 9383-0
- **Fax:** 0049 9402 / 9383-33
- **Email:** [info@greisinger.de](mailto:info@greisinger.de)
- **Website:** <https://manual-hub.com/>

### Introduction

The GIR 230 NTC is a device that allows for the connection and operation of various input and output functions. It is designed for use in electrical systems.

### Electrical Connection

To connect a NTC transmitter, follow these steps:

1. Ensure that the power supply to the device is turned off.
2. Locate the NTC transmitter connection terminals on the device.
3. Connect the NTC transmitter to the appropriate terminals, taking care to match the polarity

To connect switching outputs, follow these steps:

1. Ensure that the power supply to the device is turned off.
2. Locate the relay output terminals on the device.
3. Connect the switching outputs to the appropriate terminals, following the provided guidelines.

## Configuration of the Device

To configure the device, follow these steps:

1. Power on the device.
2. Select the desired input signal type from the available options.
3. Select the desired output function from the available options.

- **Q: Where can I find the user manual for the GIR 230 NTC?**

- **A:** The user manual can be found on the manufacturer's website at <https://manual-hub.com/>.

- **Q: How do I connect a NTC transmitter to the device?**

- **A:** To connect a NTC transmitter, follow the steps provided in the "Electrical Connection" section of the user manual.

- **Q: How do I configure the device?**

- **A:** To configure the device, follow the steps provided in the "Configuration of the Device" section of the user manual.

- **Q: How do I set switchpoints and alarm boundaries?**

- **A:** The user manual provides detailed instructions on how to set switchpoints and alarm boundaries. Refer to the "Switchpoints and Alarm-Boundaries" section for more information.

- **Q: Can I store and retrieve min/max values with this device?**

- **A:** Yes, the device has a min/max-value storage feature. Refer to the "Min/Max-Value Storage" section of the user manual for instructions on how to use this feature.

## Safety regulations

This device was designed and tested considering the safety regulations for electronic measuring devices. Faultless operation and reliability in operation of the measuring device can only be assured if the General Safety Measures and the devices specific safety regulations mentioned in this users manual are considered.

1. Faultless operation and reliability in operation of the measuring device can only be assured if the device is used within the climatic conditions specified in the chapter "Specification"
2. Always disconnect the device from its supply before opening it. Take care that nobody can touch any of the devices contacts after installing the device.
3. Standard regulations for operation and safety for electrical, light and heavy current equipment have to be observed, with particular attention paid to the national safety regulations (e.g. VDE 0100).
4. When connecting the device to other devices (e.g. the PC) the interconnection has to be designed most thoroughly, as internal connections in third-party devices (e.g. connection of ground with protective earth) may lead to undesired voltage potentials.
5. The device must be switched off and must be marked against re-starting, in case of obvious malfunctions of the device which are e.g.:
  - visible damage.

- the device is not working as prescribed.
- after storage of the device under inappropriate conditions for longer time.

In case of doubt, the device should be sent to the manufacturer for repairing or servicing.

**ATTENTION:** When running electric devices, parts of them will always be electrically live. Unless the warnings are observed serious personal injuries or damage to property may result. Skilled personnel only should be allowed to work with this device. For trouble-free and safe operation of the device please ensure professional transport, storage, installation and connection as well as proper operation and maintenance.

## SKILLED PERSONNEL

Are persons familiar with installation, connection, commissioning and operation of the product and have professional qualification relating to their job.

For example

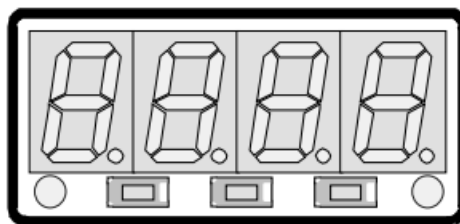
- Training or instruction respectively qualifications to switch on or off, isolate, ground and mark electric circuits and devices or systems.
- Training or instruction according to the state.
- First-aid training.

## ATTENTION

Do NOT use this product as safety or emergency stopping device, or in any other application where failure of the product could result in personal injury or material damage.

Failure to comply with these instructions could result in death or serious injury and material damage.

## Introduction



The GIR 230 Pt is a microprocessor-controlled displaying, monitoring, and controlling device.

The device supports one interface for the connection of:

- NTC, 10k (2-wire-technology)
- The device features two switching outputs (1 \* Relays, 1 \* NPN-Output), which can be configured as 2-point-controller, 2-point-controller with min./max. alarm, or just individual min./max. alarm.
- The state of the relay output is displayed with the left LED beneath the front 4-digit LED-display.
- If there is an alarm condition the display alternates between value and AL.Lo or AL.Hi.
- When leaving factory the GIR230NTC has been subjected to various inspection tests and is completely calibrated.
- Before the GIR230NTC can be used, it has to be configured for the customers applications.
- **Hint:** In order to avoid undefined input states and unwanted or wrong switching processes, we suggest to connect the device's switching outputs after You have configured the device properly.

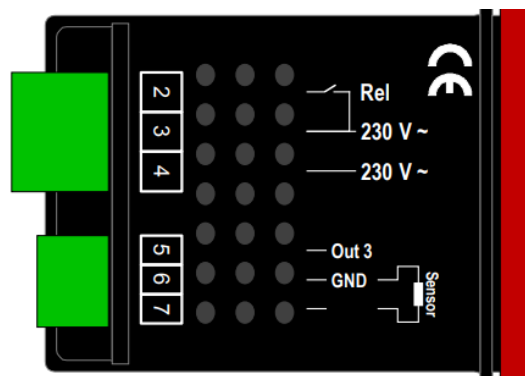
## Electrical connection

Wiring and commissioning of the device must be carried out by skilled personnel only.

In case of wrong wiring the device may be destroyed. We can not assume any warranty in case of wrong wiring of the device.

## Terminal assignment

2	Relay-output 1 (230VAC)
3	Supply voltage, 230VAC
4	Supply voltage, 230VAC
5	Output 3
6	GND, Pt100, Pt1000
7	Pt100



## Connection data

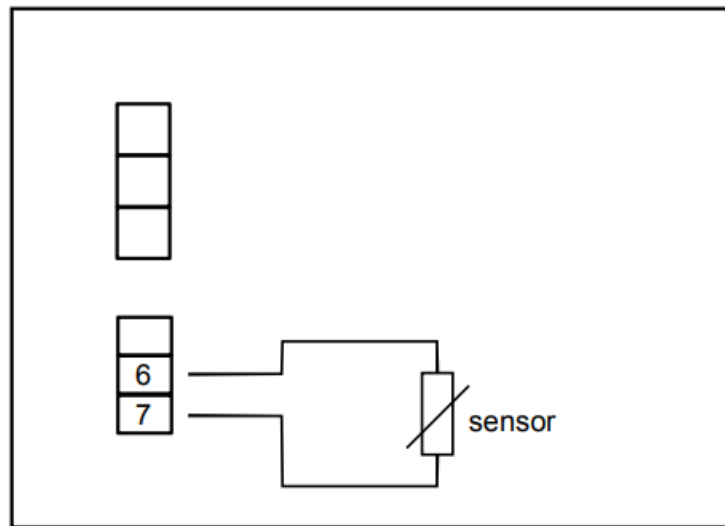
	between terminals	typical		limitations		notes
		min.	max.	min.	max.	
Supply voltage	3 and 4	207 VAC	244 VAC	0 VAC	253 VAC	
Relay output	2 and 3				5 A, ohm resistive load	
Output 3 (NPN, open collector)	5 and 6			0 VDC	28 VDC, I < 30mA	
Input NTC	6 and 7			0 $\Omega$	$\infty$ $\Omega$	<i>no active signal allowed</i>

These limits must not be exceeded (not even for a short time) !

## Connecting an input signal

Please take care not to exceed the limitations of the inputs when connecting the device as this may lead to destruction of the device..

## Connecting a NTC transmitter



*NTC-temperature probe (2-wire-technology)*

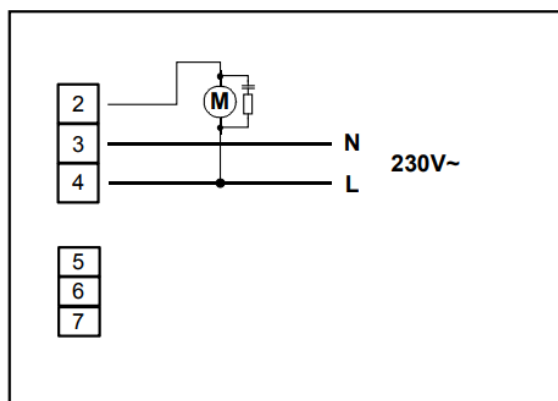
## Connecting switching outputs

The switching outputs are depending on the device's configuration of the selected output functions.

**Hint:** In order to avoid unwanted or wrong switching processes, we suggest connecting the devices switching outputs after you have configured the device's switching outputs properly.

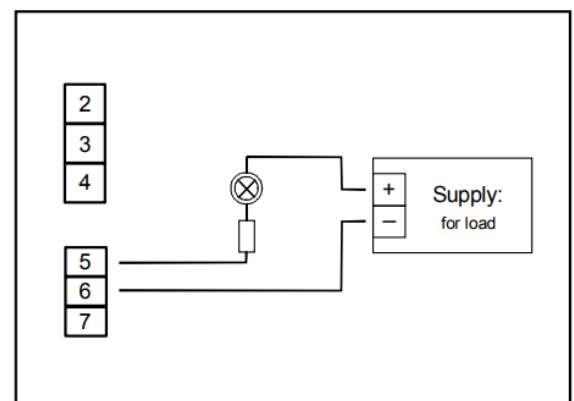
- Please take care that you must not exceed the limits of the voltage and of the maximum current of the switching outputs (not even for a short period of time). Please take extreme care when switching inductive loads (like coils or relays, etc.) because of their high voltage peaks, protective measures to limit these peaks have to be taken.
- When switching large capacitive loads a series resistor for current limitation is needed, because of the high turn-on-current of high capacitive loads. The same applies to incandescent lamps, whose turn-on-current is also quite high due to their low cold resistance.

### 3.4.1. Connection of the relay outputs



*Connection of consumer loads (motor)*

### 3.4.2 Connection of output 3 (NPN-output, switching to ground)



*Connection of consumer loads (lamp)*

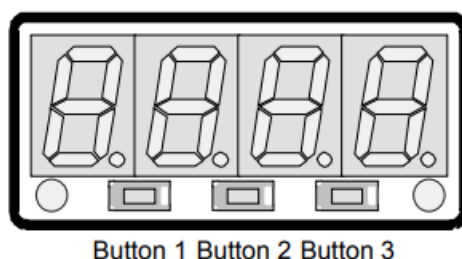
## Configuration of the device

**Please note:** When you are configuring the device and don't press any button for more than 60 sec. the configuration of the device will be canceled. The changes you made will not be saved and will be lost!

**Hint:** The buttons 2 and 3 are featured with a roll function. When pressing the button once the value will be raised

(button 2) by one or lowered (button 3) by one. When holding the button press for longer than 1 sec. the value starts counting up or down, the counting speed will be raised after a short period of time. The device also features an overflow function, when reaching the upper limit of the range, the device switches to the lower limit, and vice versa.

## Selecting an input signal type



- Turn the device on and wait until it completed its built-in segment test.
- Press button 2 for >2 sec.  
The device displays the Unit (the unit you want to measure).
- Use button 2 and button 3 to select the desired Unit °C or °F.
- Validate the selected value by pressing button 1. The display shows Unit again.
- Press button 1 again, the display will show FiLt (digital filter).
- Use button 2 and button 3 to select the desired filter [in sec.].

**Selectable values:** 0.01 ... 2.00 sec.

**Explanation:** this digital filter is a digital replica of a low-pass filter.

- Press button 1 to validate your value, the display shows FiLt again.

Now your device is adjusted to your temperature probe. Now the only thing left to do is to adjust the outputs of the device.

- Press button 1 again, the display will show out. (output)

For offset and slope adjustment

## Selection of the output function

Description	To select as output	Output 1 (Relay 1)	Output 3 (out 3)	See chapter
No output, device is used as display device	<b>no</b>	off	off	—
2-point-controller	<b>2P</b>	Switch-function 1	Switch-function 1	5.1
2- point-controller with min-/max-alarm	<b>2P.AL</b>	Switch-function 1	Min-/Max-alarm, inverted	5.2
min-/max-alarm	<b>AL</b>	Min-/Max-alarm, inverted	Min-/Max-alarm, inverted	5.3

- The Display now shows out. (output)
- Use button 2 and button 3 (middle and right button) to select the desired output-function. The following table shows how the outputs will be configured on your selection.
  - Press button 1 to validate the selected output function. The display shows “outP” again.
- When selected no as desired output you finished configuring your device. Press button 1 to switch over to display the measuring value.
- When selected a different output you have to configure the preferred states and delay time of the outputs and the switch and alarm points.

Depending on your output function setting, it may be possible that one or more settings described below wont be available.

- When pressing button 1 again, the device will display 1.dEL (delay of switch function 1).
- Use button 2 and button 3 to set the desired value for switch function 1.
 

**Hint:** The selected value [0.01 ... 2.00] will be in seconds.
- Press button 1 to validate the selection. The display shows 1.dEL again.
- Press button 1 again, the device will display 1. Err (error = preferred state of switch function 1).
- Use button 2 and button 3 (middle and right button) to set the desired output state in case of an error.

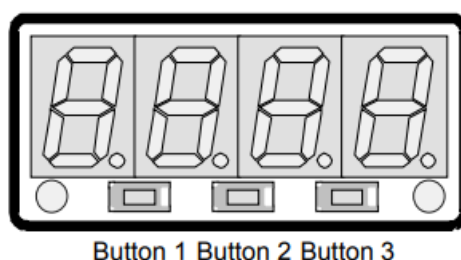
Display	Preferred state of the output	Note
<b>off</b>	Inactive in case of an error	
<b>on</b>	Active in case of an error	

- Press button 1 to validate the selection. The display shows 1. Err again
- **Hint :** The settings for the switching and alarm points can be made later in an extra menu

## Switch points and alarm-boundaries

**Please note:** The settings of the switchpoints will be cancelled, when no button was pressed for more than 60 sec. changes you may have made already wont be saved and will be lost!

**Hint:** The buttons 2 and 3 are featured with a roll function. When pressing the button once the value will be raised (button 2) by one or lowered (button 3) by one. When holding the button pressed for longer than 1 sec. the value starts counting up or down, the counting speed will be raised after a short period of time. The device also features an overflow function, when reaching the upper limit the device switches to the lower limit, vice versa.



- When pressing button 1 for >2 sec. the menu to select the switch points and alarm boundaries will be called.



- Depending on the configuration you have made in the output menu you will get different display values. Please follow the specific chapter for further information.

Description	To select as output	Go on in chapter	Note
No output, device is used as display device	<b>no</b>	—	
2- point-controller	<b>2P</b>	5.1	
2- point-controller with min-/max-alarm	<b>2P.AL</b>	5.2	
min-/max-alarm	<b>AL</b>	5.3	

## point-controller

This chapter describes how to configure the device as a 2-point-controller. This instruction demands that you selected 2P as your desired output function.

- Press button 1 (when not already done). The device will be displaying 1.on (turn-on-point of output 1).
- Use button 2 and button 3 to set the desired value, the devices output 1 should be turning on.
- Press button 1 to validate your selection. The display shows 1.on again.
- When pressing button 1 again, the device will be displaying 1.off. (turn-off-point of output 1)
- Use button 2 and button 3 to set the desired value, the devices output 1 should be turning off.
- Press button 1 to validate your selection. The display shows 1.off again.

**Example:** You want to control the temperature of a heating coil, with a hysteresis of +2°C, to 120°C.

Therefore you will have to select the turn-on-point 1.on to 120°C and the turn-off-point to 122°C. When your heating coil temperature falls below 120°C it will be turned on. When the temperature rises above 122°C the heating coil will be turned off.

**Note:** Depending on the inertia of your heating coil an overshooting of the temperature may be possible.

Now you finished configuring the switching points of your device. Press button 1 to switch over to display the measuring value.

## -point-controller with alarm function

This chapter describes how to configure the device as a 2-point-controller with alarm function.

- Press button 1 (when not already done). The device will be displaying 1.on (turn-on-point of output 1).
- Use button 2 and button 3 to set the desired value, the devices output 1 should be turning on.
- Press button 1 to validate your selection. The display shows 1.on again.
- When pressing button 1 again, the device will be displaying 1.off. (turn-off-point of output 1)
- Use button 2 and button 3 to set the desired value, the devices output 1 should be turning off.
- Press button 1 to validate your selection. The display shows 1.off again. This instruction demands that you selected 2P.AL as your desired output function.

**Example:** You want to control the temperature of a cooling chamber between 20°C and 22°C.

Therefore you will have to select 20°C for the turn-on-point 1 1.on and 22°C for the turn-off-point 1 1.off. When the temperature rises above 20°C the device turns its output 1 on, when falling below 22°C the device will turn its output 1 off .

**Note:** Depending on the inertia of your cooling circuit an overshooting of the temperature may be possible.

- When pressing button 1, the device will display AL.Hi. (maximum alarm-value)
- Use button 2 and button 3 to set the desired value, the device should turn on its maximum-alarm.
- Press button 1 to validate your selection. The display shows AL.Hi again.
- When pressing button 1 again, the device will be displaying AL.Lo. (minimum alarm-value)
- Use button 2 and button 3 to set the desired value, the device should turn on its minimum-alarm
- Press button 1 to validate your selection. The display shows AL.Lo again.
- When pressing button 1 again, the device will be displaying A.dEL. (delay of the alarm-function)
- Use button 2 and button 3 to set the desired delay of the alarm-function.
  - **Note:** The unit of the value to be set [0 .. 9999] is in seconds. The device will turn on the alarm after the minimum or maximum alarm value was active for the delay-time you have set.
  - Press button 1 to validate the delay time. The display shows A.D.EL again.

- **Example:** You want to have an alarm monitoring for the cooling chamber mentioned above. The alarms should start when the temperature will be rising above 15°C or falling below 30°C.

Therefore you have to select 15°C for the maximum alarm-value AL.Hi and 30°C for the minimum alarm-value AL.Lo.

The alarm will be starting after the temperature rises above 15°C and stays above 15°C for the entered delay time or after it falls below 30°C and stays below 30°C for the entered delay time.

Please note that the alarm-outputs are inverted! This means, that the output will be active if there is no alarm! Now you finished configuring your device. Press button 1 to switch over to display the measuring value.

## Minimum/maximum-alarm

This chapter describes how to configure the devices alarm boundaries for min-/max-alarm-monitoring. This instruction demands that you selected AL as your desired output function.

- Press button 1 (when not already done) , the device will be displaying AL.Hi. (maximum alarm-value)
- Use button 2 and button 3 to set the desired value, the device should turn on its maximum-alarm.
- Press button 1 to validate your selection. The display shows AL.Hi again.
- When pressing button 1 again, the device will be displaying AL.Lo. (minimum alarm-value)
- Use button 2 and button 3 to set the desired value, the device should turn on its minimum-alarm
- Press button 1 to validate your selection. The display shows AL.Lo again.
- When pressing button 1 again, the device will be displaying A.dEL. (delay of the alarm function)
- Use button 2 and button 3 to set the desired delay of the alarm function.
- **Note:** The unit of the value to be set [0 .. 9999] is in seconds. The device will turn on the alarm after minimum or maximum alarm value was active for the delay-time you have set.
- Press button 1 to validate the delay time. The display shows A.dEL again.
- **Example:** You want to have a temperature alarm monitoring of a greenhouse. The alarm should start when the temperature rises above 50°C or falls below 15°C.

Therefore your settings will be 50°C for the maximum alarm-value AL.HI and 15°C for the mini-mum alarm-value AL.Lo.

The alarm will start after the temperature rises above 50°C and stays above 50°C for the entered delay time or after it had been falling below 15°C and stays below 15°C for the entered delay time.

- Please note that the alarm outputs are inverted! This means, that the output will be active when there is no alarm! Now you finished configuring your device. Press button 1 to switch over to display the measuring value.

### Min-/Max-alarm display

The device features a minimum/maximum-value storage. In this storage, the highest and lowest measured value are saved.

If an output function with alarm (out = 2P.AL or AL) is selected and there is an alarm condition the display alternates between measuring value and AL.Lo or AL.Hi

**Min.-alarm:** approx. all 2 sec. AL.Lo will be shown in the display

**Max.-alarm:** approx. all 2 sec. AL.Lo will be shown in the display

### Min-/max-value storage

- Calling of the minimum-value press button 3 shortly
- Calling of the maximum-value press button 2 shortly
- Erasing of the min/max values press buttons 2 and 3 for 2 sec.

the device will display Lo briefly, after that the min-value is displayed for about 2 sec.

the device will display Hi briefly, after that the max-value is displayed for about 2 sec.

The device will display CLr briefly, after that the min/max values are set to the current displayed value.

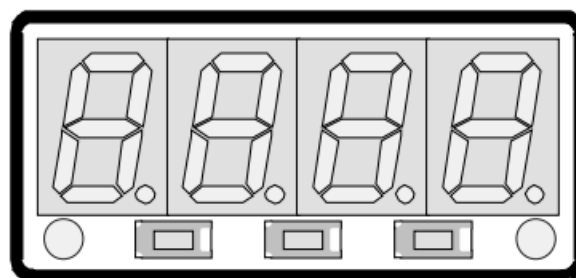
### Offset- and slope-adjustment

The offset and slope-adjustment function can be used for compensating the tolerance of the used probes.

**Please note:** The settings of the offset- / slope adjustment will be canceled, when no button was pressed for more than 60 sec. Changes you may have made already wont be saved and will be lost!

**Hint:** The buttons 2 and 3 are featured with a roll function. When pressing the button once the value will be raised (button 2) by one or lowered (button 3) by one. When holding the button pressed for longer than 1 sec. the value starts counting up or down, the counting speed will be raised after a short period of time.

The device also features a overflow-function, when reaching the upper limit the device switches to the lower limit, vice versa.



Button 1 Button 2 Button 3

- Turn on the device and wait after it finished its built-in segment test.

- Press button 3 > 2 sec.
- The device will be displaying OFFS (offset).
- Use button 2 and button 3 for setting the desired zero point offset-value.

The input of the offset will be in digits.

The value that had been set will be subtracted from the measured value. (see below for further information)

- Press button 1 to validate your selection. The display shows OFFS again.
- When pressing button 1 again, the device will display SCAL. (scale = slope)
- Use button 2 and button 3 to select the desired slope adjustment.
- The slope adjustment will be entered in %. The value displayed can be calculated like this:

**Displayed value = (measured value zero point offset) \* (1 + slope adjustment [% / 100]).**

**Example:** The setting is 2.00 => the slope has risen 2.00% => slope = 102%.

When measuring a value of 1000 (without slope-adjustment) the device would display 1020 (with slope adjustment of 102%)

- Press button 1 to validate the selection of the slope-adjustment. The display shows “SCAL” again.

Example for offset- and slope-adjustment:

**Example:** Connecting an NTC-Probe (offset deviation depending on using long wires between probe and device)

The device displays the following values (without offset- or slope-adjustment): at 0°C = 0.5°C, at 100°C = 100.5°C Therefore you calculated: zero point: 0.5

- $100.5 - 0.5 = 100.0$  (=>deviation = 0)
- **You have to set: the slope:** offset = 0.5 (= zero point deviation)
- scale = 0.00

## Error codes

When detecting an operating state which is not permissible, the device will display an error code The following error codes are defined:

### Err.1: Exceeding of the measuring range

Indicates that the valid measuring range of the device has been exceeded.

#### • Possible causes:

- Temperature too high.
- sensor shorted
- sensor is wrong-connected

#### Remedies

- The error message will be reset if the input signal is within the limits.
- check probe and device configuration.

### Err.2: Value below the measuring range

Indicates that the value is below the valid measuring range of the device.

**Possible causes:**

- Temperature is too low
- sensor broken
- the sensor is wrong-connected

**Remedies:**

- The error message will be reset if the input signal is within the limits.
- check probe and device configuration.

**Err.7: System-error**

The device features an integrated self-diagnostic function that checks essential parts of the de-vice permanently. When detecting a failure, error-message Err.7 will be displayed.

**Possible causes:**

- Valid operating temperature range has been exceeded or is below the valid temperature range.
- Device defective.

**Remedies:**

- Stay within valid temperature range.
- Exchange the defective device.

**Err.9: Sensor defective**

The device features a built in diagnose function for the connected probe or transducer. When this function is detecting an error the message Err.9 will be displayed.

**Possible causes:**

- probe broken or shorted
- sensor is wrong connected

**Remedies:**

- check probe and exchange defective probe, if necessary.

**Specification**

	Connection between	Performance data		Limit values		Notes
		min.	max.	min.	max.	
Supply voltage	3 and 4	207 VAC	244 VAC	0 VAC	253 VAC	
Relay output	2 and 3				5 A, ohm resistive load	
Output 3 (NPN, open collector)	5 and 6			0 VDC	28 VDC, I < 30mA	
Input NTC	6 and 7			0 $\Omega$	$\infty \Omega$	<i>No active signal allowed</i>

**Absolute maximum ratings must not be exceeded (not even for a short period of time)!**

- **Measuring inputs:** NTC, 10k (2-Leiter)
- **Display range:** -40.0 ... +120.0 °C or -40.0 ... +248.0 °F
- **Accuracy:** < 0.5% FS  $\pm$ 1Digit (at nominal temperature)
- **Meas. frequency:** approx. 4 measures/sec.
- **Outputs:** 1 relay output, switching to 230V 1 NPN-output (open collector), switching to ground
- **Relay output:** closing contact
- **breaking capacity:** 5A, 230VAC, resistive load
- **NPN-output:** NPN, Open Collector
- **breaking capacity:** 30mA, max. 28VDC
- **Output functions:** 2-point, 2- point with alarm, min-/max-alarm.
- **Switching points:** arbitrary
- **Switching delay:** arbitrary: 0.01 ... 2.00 sec.
- **Alarm delay:** arbitrary: 1 ... 9999 sec.
- **Display:** approx. 10 mm high, 4-digit red LED display
- **Operation:** 3 push buttons
- **Power supply:** 230V, 50/60Hz
- **Power consumption:** approx. 2VA
- **Nominal temp.:** 25°C
- **Operating ambient:** -20 to +50°C
- **Relative Humidity:** 0 to 80 %RH (non-condensing)
- **Storing temp.:** -30 to +70°C
- **Enclosure:** main housing: fiber-glass-reinforced noryl front view-panel: polycarbonate
- **Dimensions:** 24 x 48 mm (front panel cut out).
- **Installation depth:** approx. 65 mm (incl. screw-in/plug-in clamps)
- **Panel Mounting:** via VA-spring-clip.

This website is an independent publication and is neither affiliated with nor endorsed by any of the trademark owners. The "Bluetooth®" word mark and logos are registered trademarks owned by Bluetooth SIG, Inc. The "Wi-Fi®" word mark and logos are registered trademarks owned by the Wi-Fi Alliance. Any use of these marks on this website does not imply any affiliation with or endorsement.