

# Greentek STS 2.0 Smart Touch Screen Control Instruction Manual

[Home](#) » [Greentek](#) » Greentek STS 2.0 Smart Touch Screen Control Instruction Manual 

## Contents

- [1 STS 2.0 Smart Touch Screen Control](#)
- [2 Product Information: STS 2.0 – Smart Touch Screen Control](#)
- [3 Product Usage Instructions:](#)
- [4 BEST PRACTICE](#)
- [5 INSTALLATION STEPS](#)
- [6 TROUBLESHOOTING](#)
- [7 Documents / Resources](#)
- [8 Related Posts](#)



**STS 2.0 Smart Touch Screen Control**



## Product Information: STS 2.0 – Smart Touch Screen Control

The STS 2.0 is a smart touch screen control designed for optimal operation of the ventilation control system. It comes with a front module and a back plate that can be mounted either to a standard electrical device box or directly to the wall using screws. The control has a terminal block located on the backside of the front module where the signal wires can be inserted and secured in place using a small 3.0 mm slot/flat head screwdriver (not included). The front module can be attached to the back plate by hooking the top of the front module to the top clips of the back plate, then by pressing the bottom of the front module until you hear a `click`.

## Product Usage Instructions:

1. Before installation, read and follow the caution and best practice instructions provided in the user manual.
2. Detach front module from back plate by pressing the tab (located at the top and bottom of the control casing).
3. Guide the signal wires (4) through the central opening of the back plate and mount this plate to either a standard electrical device box or directly to the wall using screws. If required, use wall anchors. Be sure the screws are secure but do not over tighten. This may result in damage to the back plate.
4. Insert the wires (4) into the terminal block, located on the backside of the front module. Secure them in place by tightening the terminal screws using a small 3.0 mm slot/flat head screwdriver (not included). For each wire, take note of the wire color chosen and connect to the corresponding terminals for the control and the HRV / ERV.
5. Attach front module to mounted back plate, first by hooking the top of the front module to the top clips of the back plate, then by pressing the bottom of the front module until you hear a `click`. Ensure the ventilation system operates correctly. Be careful not to pinch or trap the wires when attaching the front module to the back plate.
6. Leave operating instructions with home owner.

If error code 05 is displayed on the touchscreen control, double check the A and B signal wire. Ensure the DIP switches are in the bottom OFF position.

**WARNING** – ALWAYS DISCONNECT THE UNIT BEFORE PERFORMING MAINTENANCE OR MAKING ANY CONNECTIONS. FAILURE TO DISCONNECT POWER COULD RESULT IN ELECTRICAL SHOCK OR DAMAGE, TO THE WALL CONTROL OR THE ELECTRONIC COMPONENTS.

**CAUTION** – FOLLOW THE INSTRUCTION TO INSURE PROPER OPERATION AND FUNCTIONALITY OF THE CONTROL AND VENTILATION SYSTEM. – ONLY ONE WALL CONTROL PER VENTILATION SYSTEM IS POSSIBLE – KEEP WALL CONTROL & LOW VOLTAGE WIRES A MINIMUM 2FEET(610MM) AWAY FROM MOTORS, LIGHT BALLAST, DIMMERS AND ELECTRICAL PANELS – DO NOT ROUTE WALL CONTROL LOW VOLTAGE WIRES ALONG SIDE HIGH VOLTAGE

**WIRES** – RECOMMENDED TYPE OF WIRE: LVT 18/4 CSA/UL.

## BEST PRACTICE

**For optimal operation of the ventilation control, the following best practices are recommended during installation:**

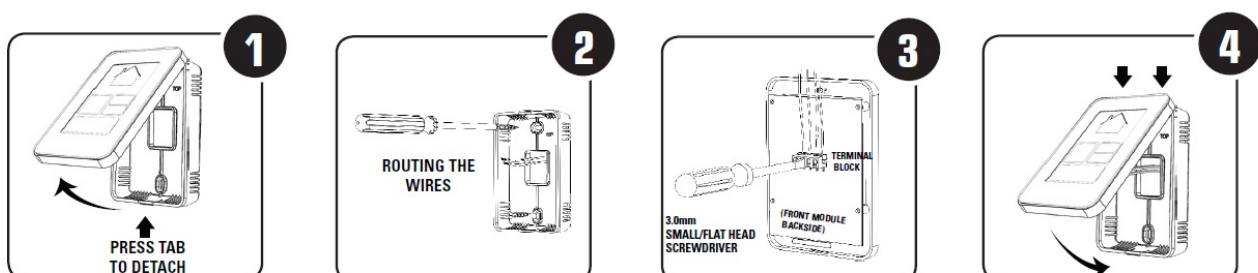
1. The location of the ventilation control could affect the optimum performance. Therefore, it is recommended that the wall control be installed in a central location, away from direct sunlight and other sources of direct heat or cold such as an outside wall or adjacent to windows.
2. Do not install ventilation controller on wall where cavity is opened to other areas.

**Example:** Forced air system return air plenum or in a wall cavity.

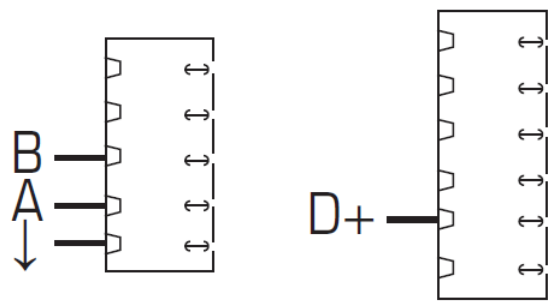
## INSTALLATION STEPS

1. Detach front module from back plate by pressing the tab (located at the top and bottom of the control casing).
2. Guide the signal wires (4) through the central opening of the back plate and mount this plate to either a standard electrical device box or directly to the wall using screws. If required, use wall anchors.  
**NOTE:** Be sure the screws are secure but do not over-tighten. This may result in damage to the back plate.
3. Insert the wires (4) into the terminal block, located on the backside of the front module. Secure them in place by tightening the terminal screws using a small 3.0 mm slot/flathead screwdriver (not included).  
**NOTE:** For each wire, take note of the wire color chosen and connect to the corresponding terminals for the control and the HRV / ERV. See illustration below
4. Attach the front module to the mounted back plate, first by hooking the top of the front module to the top clips of the back plate, then by pressing the bottom of the front module until you hear a 'click'. Ensure the ventilation system operates correctly.

**NOTE:** Be careful not to pinch or trap the wires when attaching the front module to the back plate.



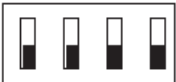
5. Leave operating instructions with the homeowner.



**TROUBLESHOOTING**

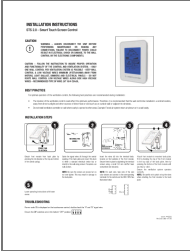
If error code 05 is displayed on the touchscreen control, double check the “A” and “B” signal wire. Ensure the DIP

switches are in the bottom “OFF” position



Item #: 445535  
Rev Date: 2021-01-20

**Documents / Resources**

	<p><a href="#">Greentek STS 2.0 Smart Touch Screen Control</a> [pdf] Instruction Manual</p> <p>STS 2.0 Smart Touch Screen Control, STS 2.0, Smart Touch Screen Control, Touch Screen Control, Screen Control, Control</p>
---	---