

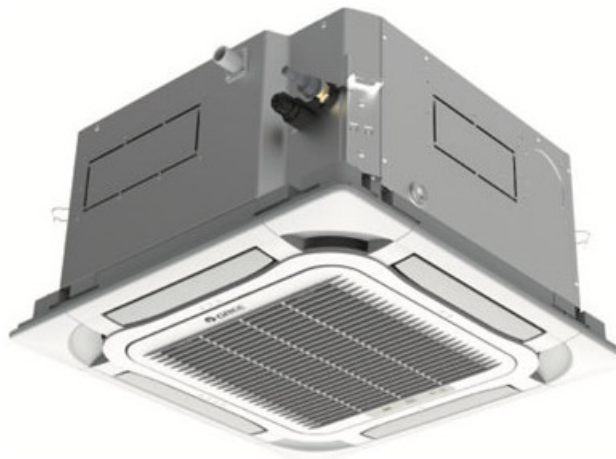


# GREE GMV-SPK1 Multipro Single Point Power Kit Instruction Manual

[Home](#) » [Gree](#) » GREE GMV-SPK1 Multipro Single Point Power Kit Instruction Manual 



## GMV-SPK1 Multipro Single Point Power Kit Instruction Manual



**GMV-SPK1  
INSTALLATION MANUAL**  
MULTIPRO SINGLE POINT POWER KIT  
COMPATIBLE MODELS:  
GMV-24WL/(A)C-T(U)  
GMV-28WL/(A)C-T(U)  
GMV-36WL/(A)C-T(U)  
GMV-48WL/(A)C-T(U)  
GMV-60WL/(A)C-T(U)

## Contents

- [1 GMV-SPK1 Multiport Single Point Power Kit](#)
- [2 ATTENTION INSTALLING PERSONNEL](#)
- [3 Documents / Resources](#)
- [4 Related Posts](#)

## GMV-SPK1 Multiport Single Point Power Kit

Thank you for choosing our product.

Please read this Installation & Owner's Manual carefully before operation and retain it for future reference.

If you lose this Manual, please contact your local distributor visit [www.greecomcomfort.com/resources](http://www.greecomcomfort.com/resources) now to download an file the electronic version.

## ATTENTION INSTALLING PERSONNEL

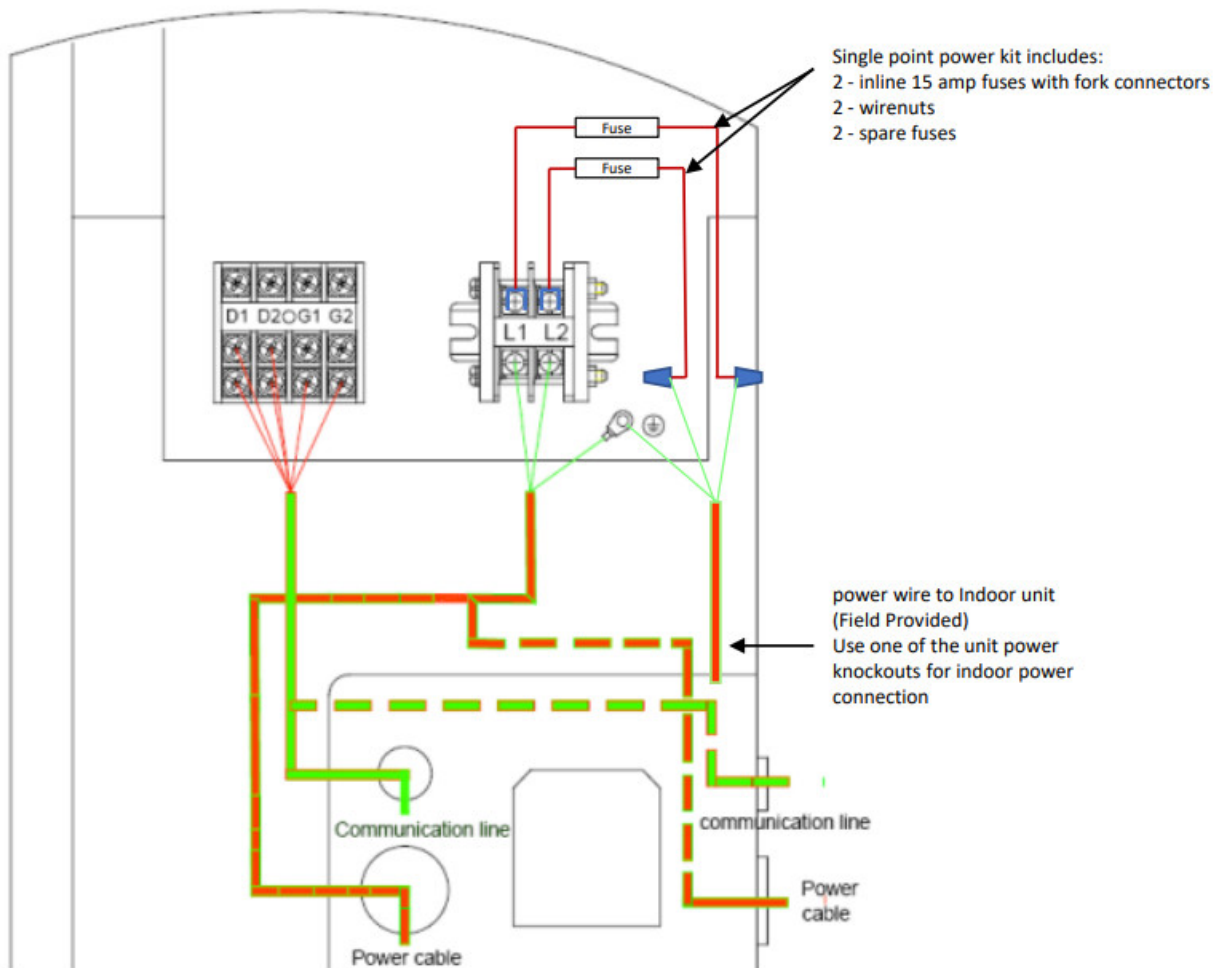
Prior to installation, thoroughly familiarize yourself with this Installation Manual. Observe all safety warnings. During installation or repair, caution is to be observed It is your responsibility to install the product safely and to educate the customer on its safe use

## CAUTIONS

- ENSURE THAT ALL POWER IS DISCONNECTED PRIOR TO ATTEMPTING INSTALLATION OF THIS KIT.
- A MEANS OF STRAIN RELIEF AND CONDUCTOR PROTECTION MUST BE PROVIDED AT THE SUPPLY WIRE ENTRANCE INTO CABINET.
- USE COPPER CONDUCTORS ONLY
- INSTALLATION MUST FOLLOW NATIONAL ELECTRIC CODE AND OTHER APPLICABLE CODES
- THIS KIT SHOULD NEVER BE USED TO POWER AUXILLARY HEATERS AND SHOULD ONLY BE USED TO POWER THE INDOOR UNITS.

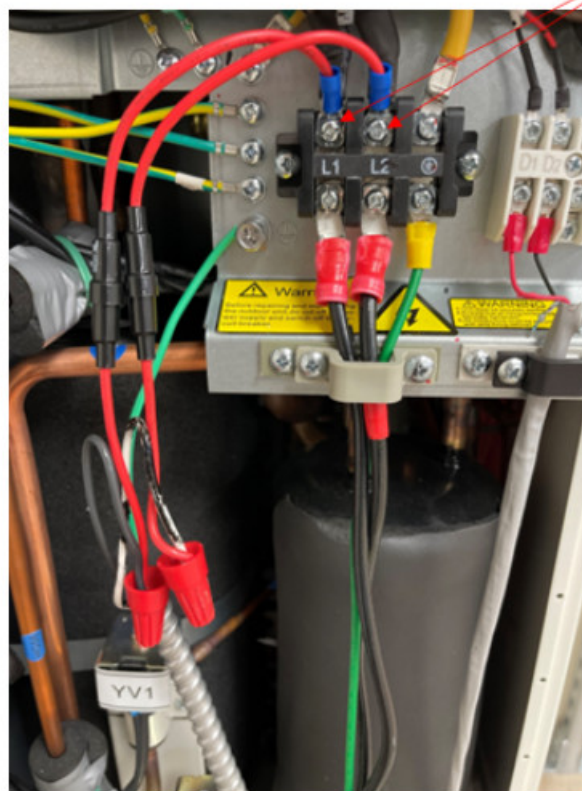
IF THIS APPLIANCE IS INSTALLED IN AN ENCLOSED AREA SUCH AS A GARAGE OR UTILITY ROOM WITH ANY CARBON MONOXIDE PRODUCING APPLIANCE, ENSURE THE AREA IS PROPERLY VENTILATED

1. Remove the front panel from the outdoor unit and electrical box cover as shown in outdoor unit installation manual.
2. Use the wiring diagram below for reference during installation

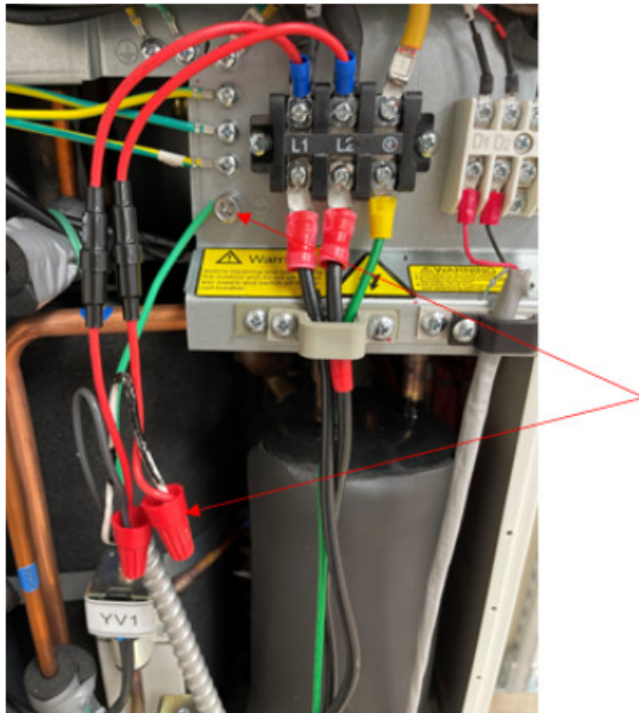


Control wire and power wire should be run in separately to avoid communication interference Outdoor unit MCA and MOCP values do not need to be adjusted when using this kit

3. Install fork connectors on inline fuse to L1 and L2 as shown



4. Using wire nuts, attach power wire to indoor units to inline fuses. Connect ground wire to indoor units to ground connection on outdoor unit as shown.




U.S. CONTACT INFORMATION TRADEWINDS, LLC

E-mail: [info@twclimate.com](mailto:info@twclimate.com)

Contractor Support: 888-850-7928 | Mon-Fri 8 AM – 5 PM EDT

[GREECOMFORT.COM](http://GREECOMFORT.COM)

## Documents / Resources

	<p><a href="#">GREE GMV-SPK1 Multipro Single Point Power Kit</a> [pdf] Instruction Manual GMV-SPK1, GMV-SPK1 Multipro Single Point Power Kit, Multipro Single Point Power Kit, Single Point Power Kit, Point Power Kit</p>
---	--

[Manuals+](#).