

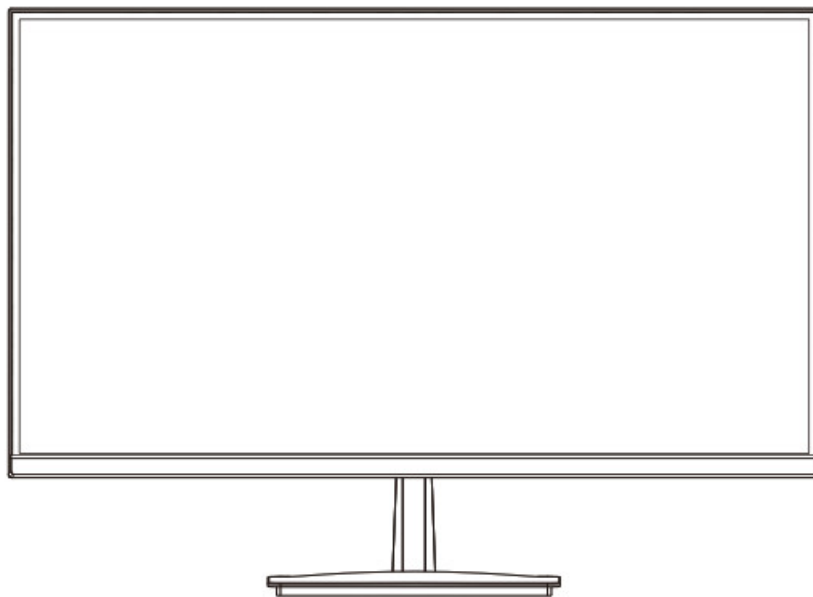


GreBear CM27 27 Inch Computer Monitor IPS Panel PC Monitors User Manual

[Home](#) » [GreBear](#) » GreBear CM27 27 Inch Computer Monitor IPS Panel PC Monitors User Manual 

GreBear

LED Monitor
User Manual



MODEL:BM27SY

Remarks: The manual is for reference only, please refer to the actual product for details.

Attention!

You are welcome to contact at grebearvip@gmail.com for assistance at no cost to you. Please be sure to provide the order id, you issue & your laptop model so that we can better assist you.

Please be assured that our team always considers the customer experience to be a top priority, and if this device can not be compatible with your device, we would love to give you a full refund and replacement.

Contents

- [1 Important Safety Instructions](#)
- [2 IMPORTANT INFORMATION](#)
- [3 Packing list](#)
- [4 Maintenance](#)
- [5 Installation and Removal](#)
- [6 Specification](#)
- [7 General troubleshooting methods](#)
- [8 Documents / Resources](#)
- [9 Related Posts](#)

Important Safety Instructions

WARNING

- This appliance is intended for household use only, and not for commercial or industrial use,
- Only connect the power plug to a suitable AC 100~240V 50Hz/60Hz earthed mains socket.
- The apparatus shall not be exposed to dripping or splashing and no objects filled with liquids, such as vases, shall be placed on the apparatus.
- Install the unit at an adequate distance from the wall to allow sufficient ventilation. Any ventilation holes should not be impeded with items, such as newspaper, fabric, curtains etc. Do not place the unit in a poorly ventilated enclosure, such as an enclosed cabinet.
- To reduce the risk of fire or electric shock, do not expose the apparatus to rain or moisture.
- Do not place on top of any other appliance.
- Do not place a burning candle or similar on top of the unit.
- Do not place the unit near any heat source such as a fireplace or space heater.
- Keep the unit clean and never store it next to a heat source or in dirty, humid or wet places.

Keep it out of direct sunlight.

- Do not insert any objects or liquids, into the ventilation openings or terminals.
- Press the buttons gently. Pressing them too hard can damage the unit.
- When moving the unit, be sure to turn the unit off and unplug the power cord from the wall outlet.
- If you notice any unusual odors or smoke around the unit, immediately disconnect the unit from the outlet and contact the help line shown on the front of this manual.

Important Safety Instructions

Image Persistence

This product is not designed to have a fixed image patterns on the screen for extended periods of time.



CAUTION RISK OF ELECTRIC SHOCK DO NOT OPEN



CAUTION: TO REDUCE THE RISK OF ELECTRIC SHOCK, DO NOT REMOVE COVER(OR BACK).
NO USER-SERVICEABLE PARTS INSIDE. REFER SERVICING TO QUALIFIED SERVICE PERSONNEL.



This “bolt of lightning” indicates uninsulated material within your unit may cause an electrical shock. For the safety of everyone in your household, please do not remove product covering.



The “exclamation point” calls attention to features for which you should read the enclosed literature closely to prevent operating and maintenance problems.

WARNING: To reduce the risk of fire or electric shock, do not expose the apparatus to rain or moisture and objects filled with liquids, such as vases, should not be placed on this apparatus.

IMPORTANT INFORMATION

Please ensure that this appliance is positioned in a sufficiently stable location, Failure to take the appropriate safety measures may result in injuries, particularly to children, damage to property or to the appliance.

- Only use cabinets or stands that are suitable for the specifications of this appliance. A stand has been provided with this appliance however, if you choose to use alternative methods, this is at your own risk. The manufacturer or supplier only recommends to use the stand provided.
- Only using furniture that can safely support the television.
Do not place the appliance on any unstable surface, stand or in a position that may create hazard for the appliance, the user or any surroundings.
- Do not place the television on tall furniture or wall brackets unless an appropriate anchoring or securing method has been used.
- Do not place the television on cloth or other unstable materials.
- Educate children about the dangers of climbing on furniture to reach the television or its controls.
It is recommended to always supervise children at all times when they are around electrical or electronic appliances.
Seek advice from an appropriate expert when attempting to mount this appliance on a wall.

Packing list

The following items are included in this display package:

1. Screen
2. Power cord/adaptor (Configured according to different models)
3. HDMI Line
4. Instructions
5. Base

1. Power Supply

The working power supply is AC 220V. Please refer to the nameplate on the back of the display for the specific specifications.

1. Please use properly grounded plugs and sockets. Incorrect grounding will result in electric shock or damage to equipment.
2. Please do not use damaged or loose plugs and wires.
3. Please do not bend the plug or wire excessively or place heavy objects on it, otherwise it may damage the plug or wire.
4. Please do not pull the wire to pull the plug, and do not touch the plug with wet hands.
5. If you do not use the equipment for a long time, or disconnect the plug when lightning strikes.
6. Do not connect too many peripherals on one wiring board, it is to avoid electric shock or fire.

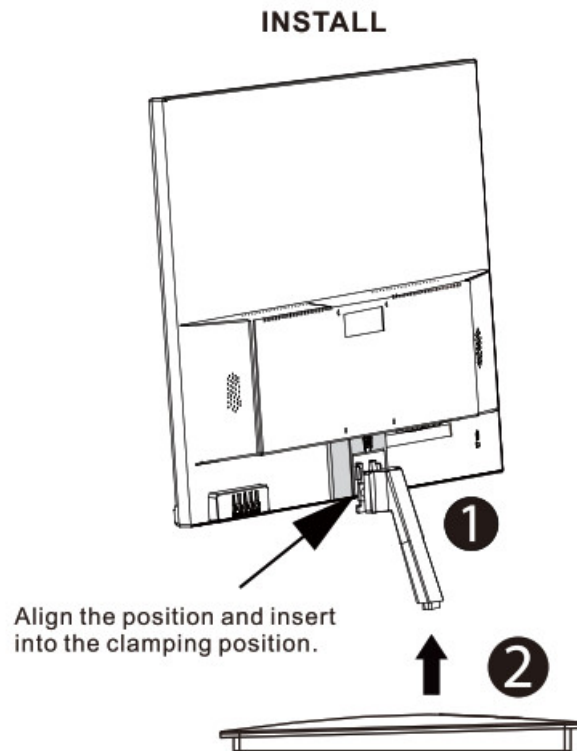
Maintenance

1. Put the display in a place with low humidity and less dust.
2. Do not expose the display to direct sunlight and keep it away from heat sources.
3. Please place the display on a stable table and adjust it carefully. Falling, striking or scraping will destroy the

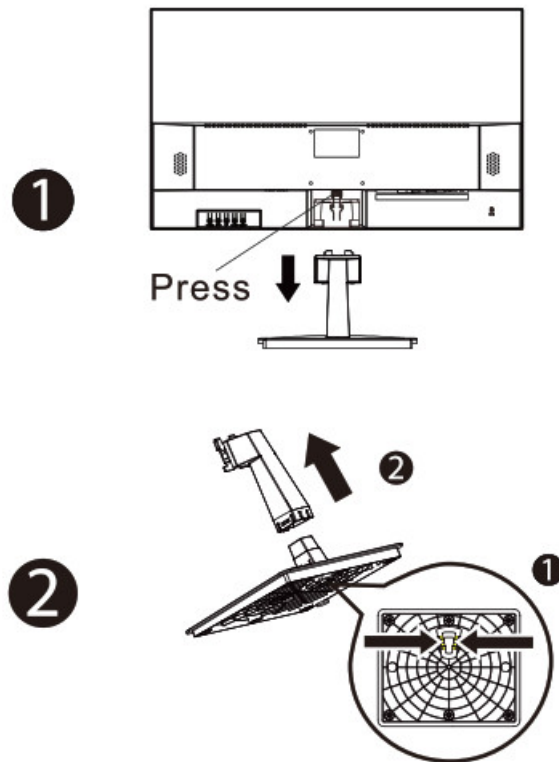
LCD screen and its plastic frame.

4. Do not put metal foreign matters into the display.
5. Do not block the vent on the display. Poor ventilation will cause the display to overheat or cause a fire.
6. Do not use ketone chemicals (such as acetic acid, ethane, acetic acid, chloroform, etc.) or other unknown substances to clean the liquid crystal panel, otherwise the panel will be damaged. Please use clean water and a soft cloth to clean the display.

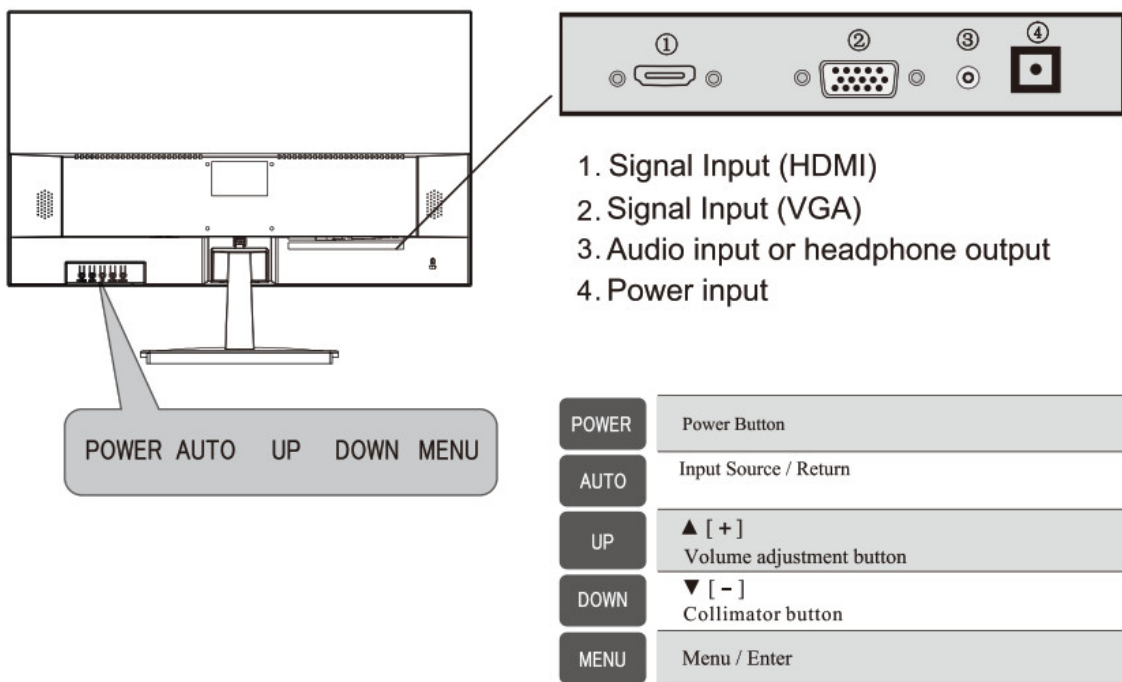
Installation and Removal



REMOVE

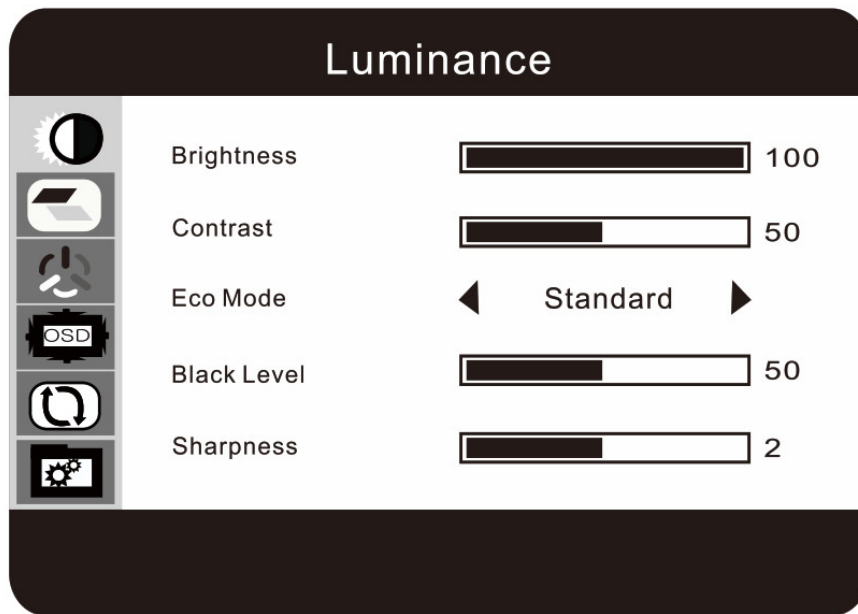


Panel Control Key/Signal Input Port



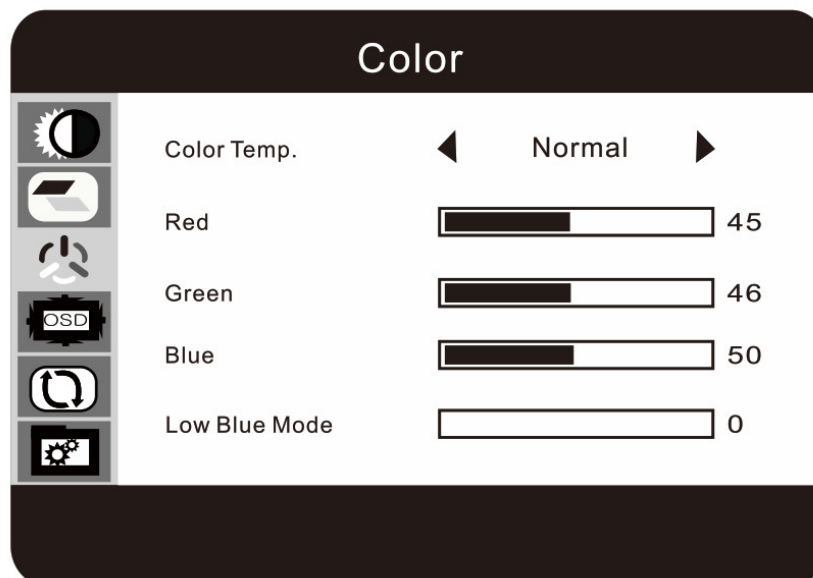
Function Menu

1.Luminance



- Brightness :Brightness adjustment Adjust the brightness of the picture to meet the requirements of the environment.
- Contrast :Contrast ratio adjustment Adjust the contrast ratio of the screen to obtain the best display effect.
- Eco Mode :Eco Mode Default Standard Mode
- Black Level : Black Level adjustment.
- Sharpness : Sharpness adjustment.

2.Color



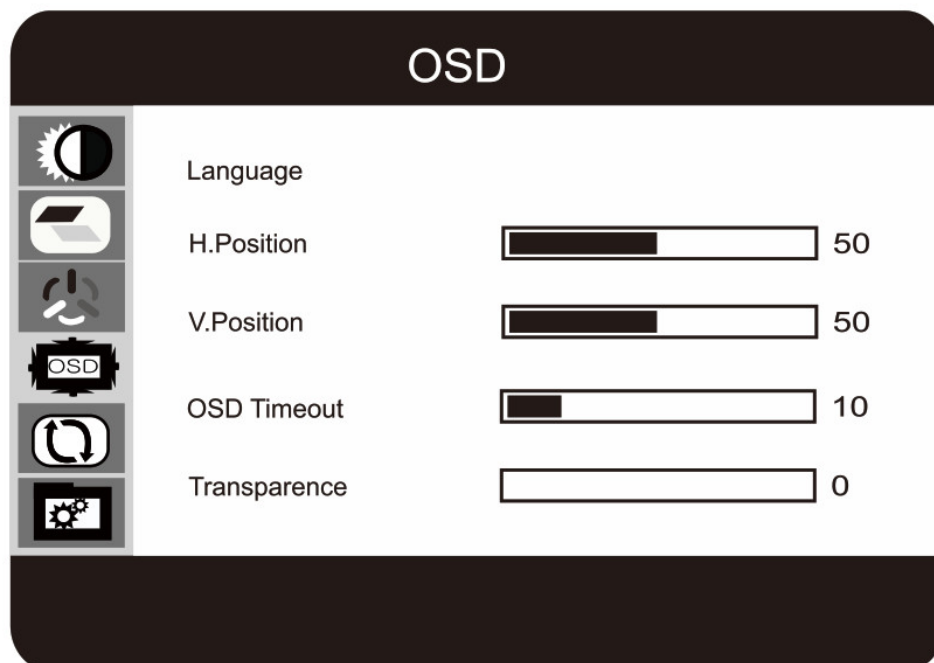
- Color Temp. Color temperature adjustment.
- Red/Green/Blue Red/Green/Blue adjustment.
- Low Blue Mode Low blue light setting to reduce eye strain.

3.Image



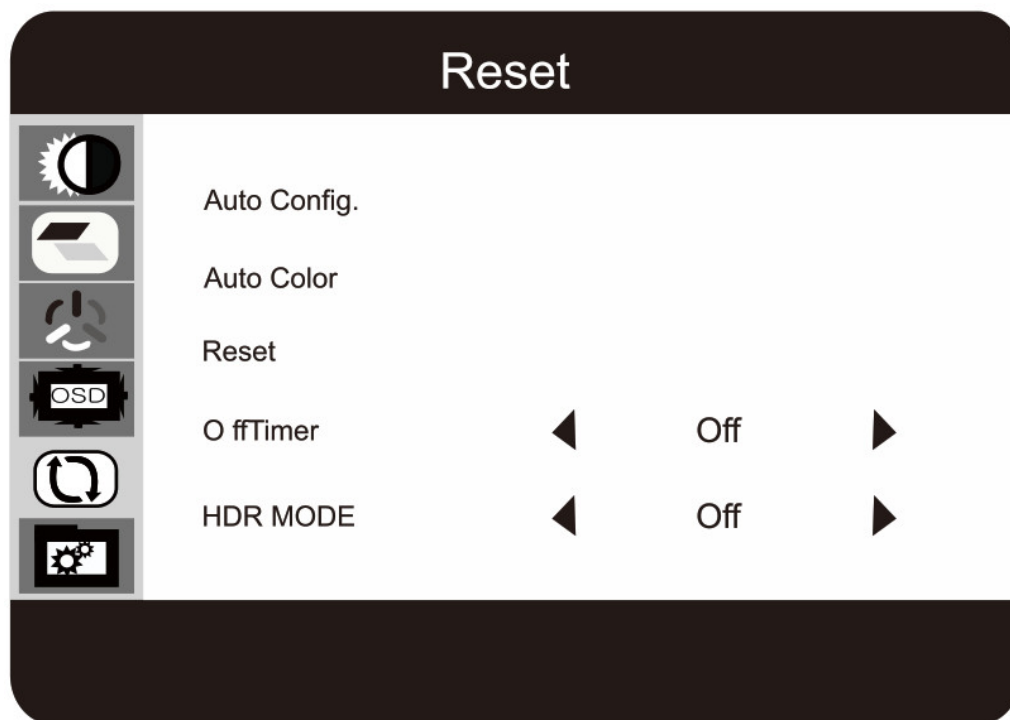
- H.Position/V.Position Adjust the horizontal and vertical positions of image menu.
- Clock Clock adjustment.
- Phase Phase adjustment.
- Image Ratio Image Ratio adjustment.

4.OSD



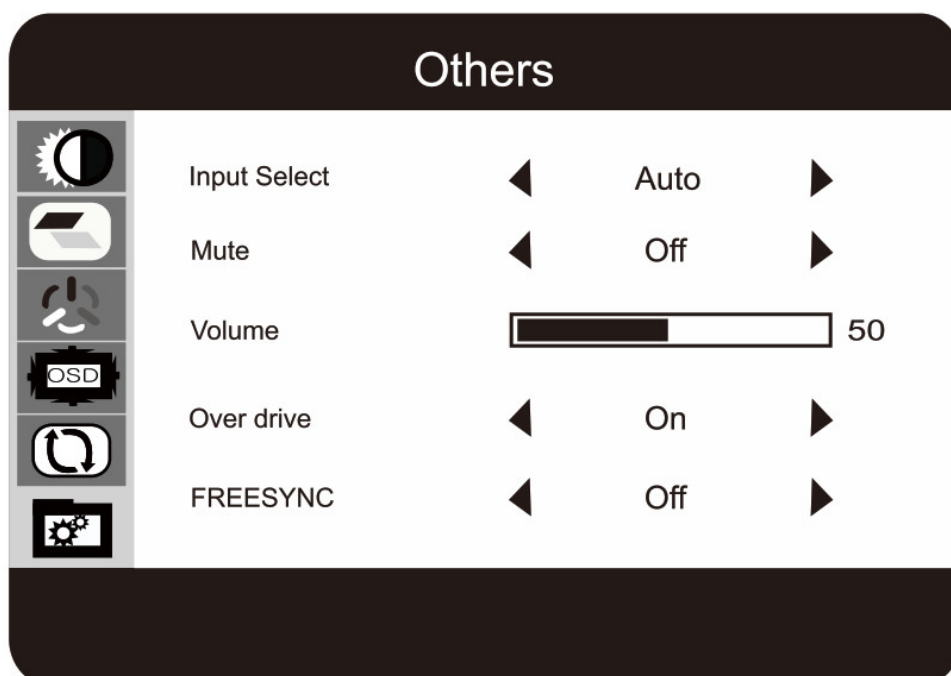
- Language language selection
- H.PositionN.Position Adjust the horizontal and vertical positions of OSD menu.
- OSD Timeout OSD Timeout.
- Transparence Transparence adjustment.

5.Reset



- Auto Config. Automatic image adjustment.
- Auto Color Automatic color adjustment.
- Reset Reset.
- 0 frnmer Scheduled shutdown, the default is off.
- HDR MODE HDR Mode, the default is off.

6.Other



- Input Select Input Select.
- Mute Mute,the default is off.
- Volume Volume adjustment.
- Over drive Over drive, the default is on.

- FREESYNC FREESYNC, the default is off.

Specification

Display size	27 Inch
Resolution (H x V)	1920'1080
Aspect Ratio	16:09
Brightness(Typical)	300 cd/m2 (TYP)
Contrast(Typleal)	1000:1
Response Time(Typical)	5ms (With OD)
Display Colors	16.7M
View Angles LR,UD(CR>10)	liN 178°1178°
Tilt	-5°-15° (±1°)
VESA Mounting	100•100mm
Input 1	VGA°1
Input 2	HDMI 1.49
Input 3	AUDIO 114"1
Speaker(Typical, output) Amplifier	2W x 2
AC Power Range	100-240V / 50-60Hz
Power Mode Indicator Light	Blue when power on, red in standby mode
Temperature	5°C – 35°C
Humidity	20% – 50%, non-condensing
Power Adaptor	12V,3A
Others	Low Blue Light, Flicker Free, Free Sync

Notes

- The display shall use the power specified by the label on the back of the machine.
- Do not open the back cover and do not try to repair the display by yourself, because there are high-voltage components inside the display that will cause harm to human body if you touching them.
- Avoid direct expose the display to sunlight or other heat sources.
- Place the display in a well-ventilated place, and do not place anything on the display to ensure good heat dissipation.
- Make sure that the surroundings of the display are clean and dry. If the display is accidentally splashed with water, immediately unplug the display and contact us.
- Do not place the display together with magnets, engines, transformers, speakers and TV to avoid interference.
- If there is smoke, noise or strange smell on the display, turn off the display immediately and contact us.
- Do not hit or scratch the display screen with any hard objects, and do not touch the display screen with your fingers to avoid smearing or scratching the screen.
- Do not insert any metal or flammable items into this product through vents, input and output terminals, etc.
- Do not install the product in an unstable place and at a lower position accessible to children, otherwise the product will fall and cause personal injury or damage to the product.
- In case of gas leakage, do not touch the product or the power plug, and ventilate immediately.
- Do not turn the product upside down or just hold the bracket to move the product. When you need to move the product, please turn off the power supply and disconnect all connecting wires.
- If you do not use this product for a long time, please unplug the power cord.
- Do not lift or move the product by holding or pulling the power cord or signal cord.

Clean the display

- Make sure the display is powered off and unplugged.
- Do not spray or splash any liquid directly onto the display screen or cabinet.
- Clean the display surface with a soft cloth that does not shed, and do not use any cleaning fluid or glass cleaner.

Fault Handling

Not powered on

1. Ensure that the power button (or switch) is in the “ON” position.
2. Make sure there is no problem with the connection between the power supply and LCD display.

The power display is normal but there is no image.

1. Ensure that the video cable is tightly connected to the video output port of the computer.
2. Adjust luminance and contrast ratio.
3. Make sure the computer is turned on. If the LED indicator of the display is red or the blue light is flashing, please check whether it has entered the power management state.

Abnormal color display

Check the video cable to ensure that it is tightly connected. Loose cable connectors or broken pins may lead to

abnormal color.

Control button failure

Please press one button once a time.

Note: In case of any discrepancy between the actual object and the instruction, it is subject to actual objects.

General troubleshooting methods

1. Whether the power cord is connected:

Check and confirm that the power cord is connected to the power outlet.

2. Is the power indicator on:

Press the power button.

3. Make sure the power is on and the power indicator is green or blue:

Adjust the luminance and contrast ratio of the picture.

4. The power indicator is orange:

If the display is in the energy-saving mode, moving the keyboard or mouse can activate the screen;

Confirm that the power is on;

Turn on the PC.

5. The screen displays "Frequency Out of Range" information:

The input signal frequency exceeds the operating frequency of the display.

Please refer to the "Specifications" section of the instruction manual for reconfiguration.

6. The screen displays "No Signal" message:

This message appears when the signal line is not connected. Check whether the signal line is connected properly and try again.

Abnormal Screen Display

1. Abnormal display position:

Press the AUTO key to automatically adjust the image to the ideal state. If you are not satisfied with the result, please use the horizontal and vertical position icons to adjust the picture position or restart the computer host.

Check the OSD screen to confirm whether the resolution or frequency has been modified.

If so, please readjust to the recommended resolution and frequency.

2. Vertical stripes or horizontal stripes can be seen on the background:

Press the AUTO key to automatically adjust the image to the ideal state. If you are not satisfied with the result, please use the horizontal correction icon to reduce the vertical stripes.

3. The picture cannot be clearly displayed and there is line interference:

Check the PC signal, adjust the display to the recommended resolution or the best state, and set the color to be higher than 24 bits (nature color).

Press the AUTO key to automatically adjust the image to the ideal state.

4. Abnormal screen display:

Check whether the signal wire connection is connected, and re-tighten if necessary.

Check whether the video card is inserted into the slot correctly.


Set the color to be higher than 24 bits (nature color) in the control panel setting.

After-sales Service:

If you have any problems during using our product, please contact us at



Documents / Resources

<div><div>GreBear</div><div>LED Monitor User Manual</div><div></div><div>MODEL BM27SY</div></div>	<div>GreBear CM27 27 Inch Computer Monitor IPS Panel PC Monitors [pdf] User Manual</div> <div>CM27 27 Inch Computer Monitor IPS Panel PC Monitors, CM27, 27 Inch Computer Monitor IPS Panel PC Monitors, Monitor IPS Panel PC Monitors, Panel PC Monitors, PC Monitors, Monitors</div>
--	--