



Granwin IoT Technology GY-BT1 Bluetooth Module User Manual

[Home](#) » [Granwin IoT Technology](#) » Granwin IoT Technology GY-BT1 Bluetooth Module User Manual 



GRANWIN

IoT service experts around you
GY-BT1

Bluetooth module manual

Version1.0 © Granwin IOT Technology (Guangzhou) Co., Ltd

Revision history

V1.0	Create version	DarrenZhuang	2021 05
V1.1	Update circuit	James Chen	2021 06
V1.2	Add platform support	DarrenZhuang	2021 08

Contents

- [1 Product Features](#)
- [2 Electrical parameters](#)
- [3 Module shape and interface](#)
- [4 Precautions](#)
- [5 FCC Statement](#)
- [6 OEM INTEGRATION INSTRUCTIONS:](#)
- [7 Validity of using the module certification:](#)
- [8 Documents / Resources](#)
- [9 Related Posts](#)

Product Features

GY-BT1 is a small-size BLE 5.0 Bluetooth module.

1.1 Module Features

Based on Jieli AC6321A Bluetooth Low Energy research and development of Bluetooth 5.0 low power design,

Working voltage: 1.8~4.5V

Working temperature: -40 °C ~ +80 °C (commercial regulations) SMD package

1.2 Bluetooth Features

Bluetooth version: BLE5.0

Modulation method: GFSK

Frequency: 2400-2483.5MHz

Bandwidth: ≤3MHz

Transmit power: ≤20dBm(EIRP)

Receive sensitivity: -92dBm

1.3 MCU Features

High-performance 32-bit RISC CPU core

Up to 96M main frequency

Maximum 73KBSRAM

Maximum 512KBFLASH

RX mode: 2.0mA

TX mode: 2.8mA@0DB

Deep sleep: 1.9UA (GPIO wake up)

Real-time clock RTC

All IO support function mapping

1.4 Main application areas

LED intelligent control

Smart Home Appliances

Sports Health

Sports wearables

Logistics label

consumer products

Electrical parameters

2.1 Voltage

Parameter Name	Minimum	Typical value	Maximum value	Unit
Supply voltage	1.8	3.3	3.4	V
I/O Voltage	0	~	3.4	V
Operating temperature	-40	~	+85	°C
Storage temperature	-40	~	+125	°C

2.2 Power consumption

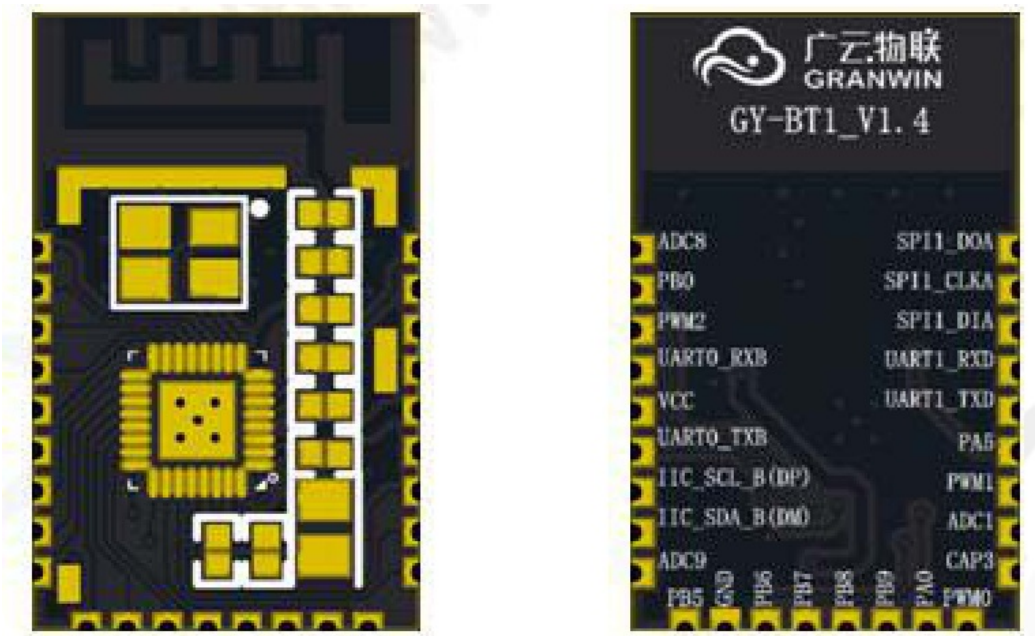
Parameter Name	Typical value	Unit
RX	2.0	mA
TX@0DB	2.8	mA
Deep sleeping	1.9UA(GPIO)	uA

Module shape and interface

3.1 Size

16X10X2.8mm length*width*height

3.2 Renderings



3.3 Pin definition

Foot position	Pin Name	Description
1	PA8	SPI1_DOA
2	PA7	SPI1_CLKA
3	PA6	SPI1_DIA
4	USB0_DM	UART1_RXD
5	USB0_DP	UART1_TXD
6	PA5	PA5
7	PA4	PWM1
8	PA3	ADC1
9	PA2	CAP3
10	PA1	PWM0
11	PA0	PA0
12	PB9	PB9
13	PB8	PB8
14	PB7	PB7
15	PB6	PB6

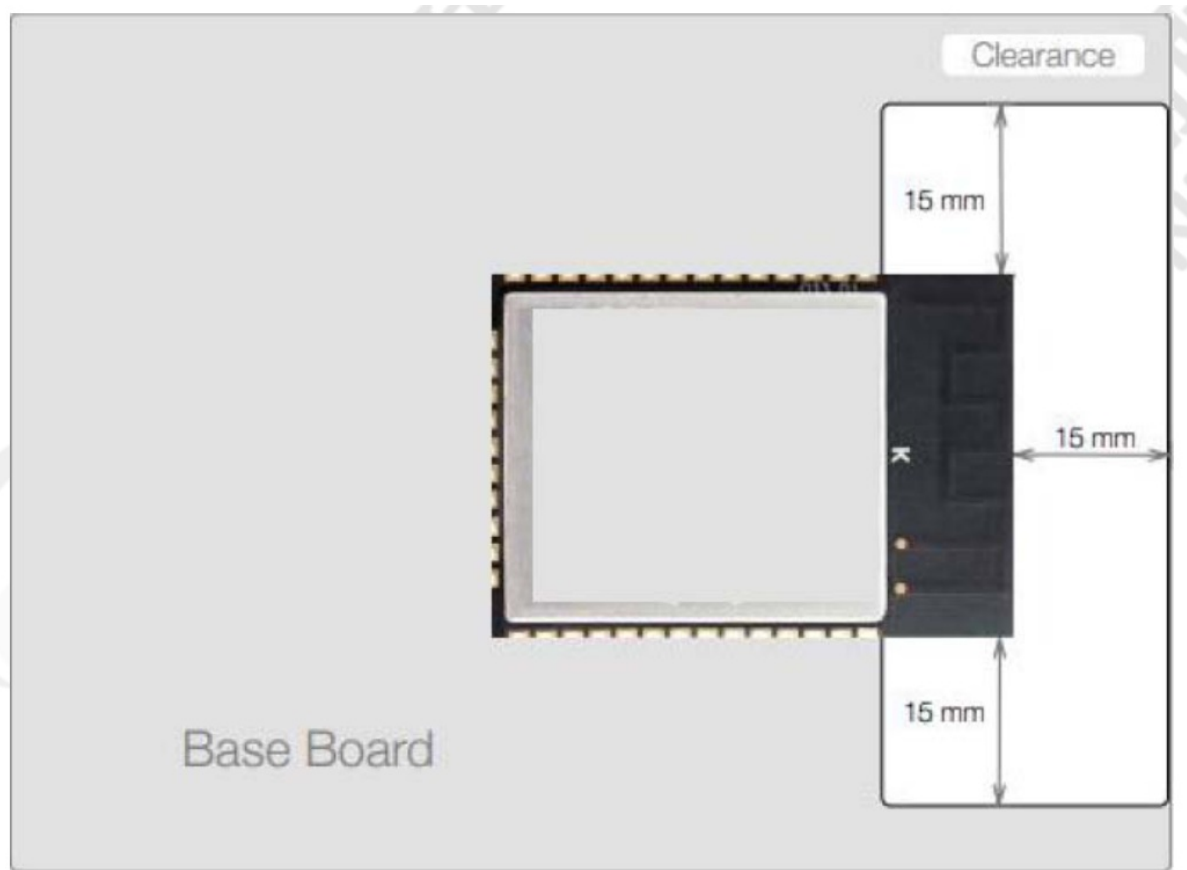
16	GND	GND
17	PB5	PB5
18	PB4	ADC9
19	USB1_DM	IIC_SDA_B(DM)
20	USB1_DP	IIC_SCL_B(DP)
21	PB3	UART0_TXB
22	VBA	VCC
23	PB2	UART0_RXB
24	PB1	PWM2
25	PB0	PB0
26	PA9	ADC8

Precautions

4.1 Power supply

Power supply, try to use a clean power supply, the ripple is controlled within 30mV

4.2 Antenna



4.3 The module can choose the onboard antenna or the external wire antenna. When laying the patch, the antenna should be completely clear, and no copper or wiring should be placed

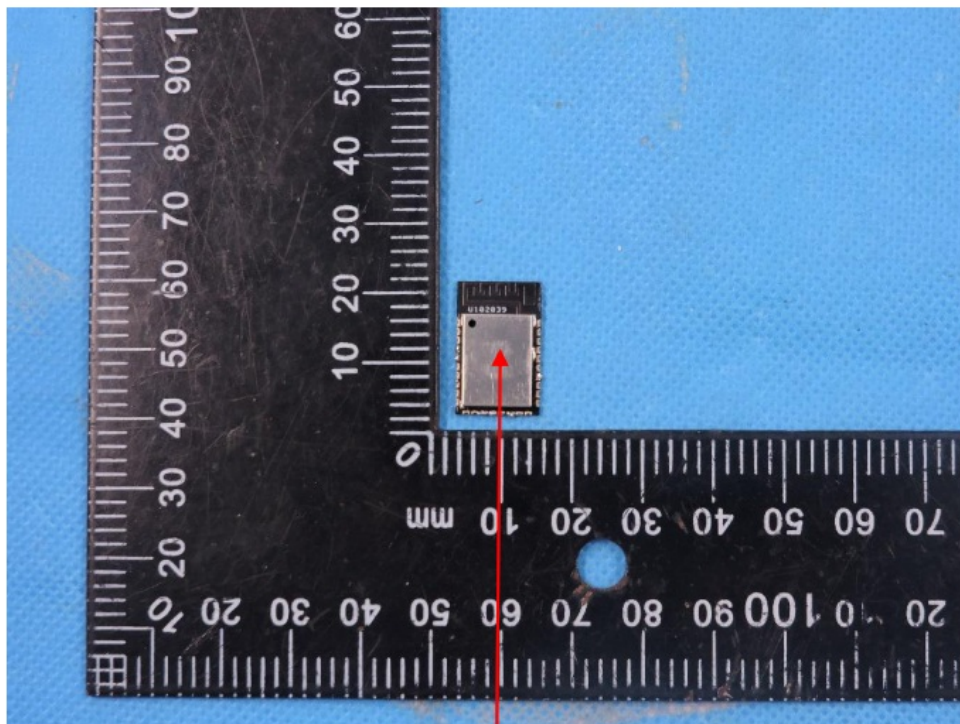
4.4 The side with IC on the module should not face the high-frequency components on the driver, but should face the outside of the driver board

4.5 The module should be kept away from the high-frequency components on the driver

4.6 The antenna placement of the module should be taken into account when making the PCB layout of the driver

4.7 For the module with the antenna welded, there are front welding and back welding methods. If you find that the module with the antenna welded on the front is not easy to place, you can consider using the module with the antenna welded on the back.

FCC Label



W:5mm

Bluetooth Module

Model: GY-BT1

FCC ID: 2A58X-GY-BT1

L:10mm

Note: The label is silk-screen on the sample

FCC Statement

Any Changes or modifications not expressly approved by the party responsible for compliance could void the user's authority to operate the equipment.

The modular can be installed or integrated into mobile or fixed devices only. This modular cannot be installed in any portable device.

FCC Radiation Exposure Statement

This modular complies with FCC RF radiation exposure limits set forth for an uncontrolled environment. This transmitter must not be co-located or operating in conjunction with any other antenna or transmitter. This modular must be installed and operated with a minimum distance of 20 cm between the radiator and the user body.

If the FCC identification number is not visible when the module is installed inside another device, then the outside of the device into which the module is installed must also display a label referring to the enclosed module. This exterior label can use wording such as the following: "Contains Transmitter Module FCC ID: 2A58X-GY-BT1 Or Contains FCC ID: 2A58X-GY-BT1"

When the module is installed inside another device, the user manual of the host must contain the below warning statements;

This device complies with Part 15 of the FCC Rules. Operation is subject to the following two conditions:

- (1) This device may not cause harmful interference.
 - (2) This device must accept any interference received, including interference that may cause undesired operation.
- The devices must be installed and used in strict accordance with the manufacturer's instructions as described in the user documentation that comes with the product.

Any company of the host device which installs this modular with Single modular approval should perform the test of radiated emission and spurious emission according to FCC part 15C: 15.247 and 15.209 requirements, Only if

the test result complies with FCC part 15C: 15.247 and 15.209 requirements, then the host can be sold legally.

Note: This equipment has been tested and found to comply with the limits for a Class B digital device, pursuant to part 15 of the FCC Rules. These limits are designed to provide reasonable protection against harmful interference in a residential installation. This equipment generates uses and can radiate radio frequency energy and, if not installed and used in accordance with the instructions, may cause harmful interference to radio communications. However, there is no guarantee that interference will not occur in a particular installation. If this equipment does cause harmful interference to radio or television reception, which can be determined by turning the equipment off and on, the user is encouraged to try to correct the interference by one or more of the following measures:

- Reorient or relocate the receiving antenna.
- Increase the separation between the equipment and receiver.
- Connect the equipment into an outlet on a circuit different from that to which the receiver is connected.
- Consult the dealer or an experienced radio/TV technician for help.

OEM INTEGRATION INSTRUCTIONS:

This device is intended only for OEM integrators under the following conditions:

The module must be installed in the host equipment such that 20 cm is maintained between the antenna and users, and the transmitter module may not be co-located with any other transmitter or antenna. The module shall be only used with the internal onboard antenna that has been originally tested and certified with this module. External antennas are not supported. As long as these 3 conditions above are met, further transmitter tests will not be required.

However, the OEM integrator is still responsible for testing their end-product for any additional compliance requirements required with this module installed (for example, digital device emissions, PC peripheral requirements, etc.). The end-product may need Verification testing, Declaration of Conformity testing, a Permissive Class II Change, or new Certification. Please involve an FCC certification specialist in order to determine what will be exactly applicable for the end product.

Validity of using the module certification:

In the event that these conditions cannot be met (for example certain laptop configurations or co-location with another transmitter), then the FCC authorization for this module in combination with the host equipment is no longer considered valid and the FCC ID of the module cannot be used on the final product. In these circumstances, the OEM integrator will be responsible for re-evaluating the end product (including the transmitter) and obtaining a separate FCC authorization. In such cases, please involve an FCC certification specialist in order to determine if a Permissive Class II Change or new Certification is required.

Upgrade Firmware:

The software provided for firmware upgrade will not be capable to affect any RF parameters as certified by the FCC for this module, in order to prevent compliance issues.

End product labeling:

This transmitter module is authorized only for use in devices where the antenna may be installed such that 20 cm may be maintained between the antenna and users. The final end product must be labeled in a visible area with the following: "Contains FCC ID: 2A58X-GY-BT1".

Information that must be placed at the end user manual:

The OEM integrator has to be aware not to provide information to the end user regarding how to install or remove this RF module in the user's manual of the end product which integrates this module. The end user manual shall include all required regulatory information/warnings as shown in this manual.

2.2 List of applicable FCC rules

List the FCC rules that are applicable to the modular transmitter. These are the rules that specifically establish the bands of operation, the power, spurious emissions, and operating fundamental frequencies. DO NOT list compliance to unintentional-radiator rules (Part 15 Subpart B) since that is not a condition of a module grant that is extended to a host manufacturer. See also Section 2.10 below concerning the need to notify host manufacturers that further testing is required.³ Explanation: This module meets the requirements of FCC part 15C(15.247).

2.3 Summarize the specific operational use conditions

Describe use conditions that are applicable to the modular transmitter, including for example any limits on antennas, etc. For example, if point-to-point antennas are used that require reduction in power or compensation for cable loss, then this information must be in the instructions. If the use condition limitations extend to professional users, then instructions must state that this information also extends to the host manufacturer's instruction manual. In addition, certain information may also be needed, such as peak gain per frequency band and minimum gain, specifically for master devices in 5 GHz DFS bands. Explanation: The EUT has a PCB Antenna, and the antenna uses a permanently attached antenna that is not replaceable.

2.4 Limited module procedures

If a modular transmitter is approved as a "limited module," then the module manufacturer is responsible for approving the host environment in which the limited module is used. The manufacturer of a limited module must describe, both in the filing and in the installation instructions, the alternative means that the limited module manufacturer uses to verify that the host meets the necessary requirements to satisfy the module limiting conditions. A limited module manufacturer has the flexibility to define its alternative method to address the conditions that limit the initial approval, such as shielding, minimum signaling amplitude, buffered modulation/data inputs, or power supply regulation. The alternative method could include that the limited module manufacturer reviews detailed test data or host designs prior to giving the host manufacturer approval. This limited module procedure is also applicable for RF exposure evaluation when it is necessary to demonstrate compliance in a specific host. The module manufacturer must state how control of the product into which the modular transmitter will be installed will be maintained such that full compliance with the product is always ensured. For additional hosts other than the specific host originally granted with a limited module, a Class II permissive change is required on the module grant to register the additional host as a specific host also approved with the module. Explanation: The Module is not a limited module.

2.5 Trace antenna designs

For a modular transmitter with trace antenna designs, see the guidance in Question 11 of KDB Publication 996369 D02 FAQ Modules for Micro-Strip Antennas and traces. The integration information shall include for the TCB review the integration instructions for the following aspects: layout of trace design, parts list (BOM), antenna, connectors, and isolation requirements.

- a) Information that includes permitted variances (e.g., trace boundary limits, thickness, length, width, shape(s), dielectric constant, and impedance as applicable for each type of antenna);
- b) Each design shall be considered a different type (e.g., antenna length in multiple(s) of frequency, the wavelength, and antenna shape (traces in phase) can affect antenna gain and must be considered);
- c) The parameters shall be provided in a manner permitting host manufacturers to design the printed circuit (PC) board layout;
- d) Appropriate parts by manufacturer and specifications;
- e) Test procedures for design verification; and
- f) Production test procedures for ensuring compliance.

The module grantee shall provide a notice that any deviation(s) from the defined parameters of the antenna trace, as described by the instructions, require that the host product manufacturer must notify the module grantee that they wish to change the antenna trace design. In this case, a Class II permissive change application is required to be filed by the grantee, or the host manufacturer can take responsibility through the change in FCC ID (new application) procedure followed by a Class II permissive change application. Explanation: Yes, The module with trace antenna designs, and This manual has shown the layout of trace design, antenna, connectors, and isolation requirements.

2.6 RF exposure considerations

It is essential for module grantees to clearly and explicitly state the RF exposure conditions that permit a host product manufacturer to use the module. Two types of instructions are required for RF exposure information: (1) to the host product manufacturer, to define the application conditions (mobile, portable xx cm from a person's body); and (2) additional text needed for the host product manufacturer to provide to end users in their end-product manuals. If RF exposure statements and use conditions are not provided, then the host product manufacturer is required to take responsibility for the module through a change in FCC ID (new application). Explanation: This module complies with FCC RF radiation exposure limits set forth for an uncontrolled environment, This equipment should be installed and operated with a minimum distance of 20 centimeters between the radiator and your body." This module is designed to comply with the FCC statement, FCC ID is 2A58X-GY-BT1.

2.7 Antennas

A list of antennas included in the application for certification must be provided in the instructions. For modular transmitters approved as limited modules, all applicable professional installer instructions must be included as part of the information to the host product manufacturer. The antenna list shall also identify the antenna types (monopole, PIFA, dipole, etc. (note that for example an "Omnidirectional antenna" is not considered to be a

specific “antenna type”)). For situations where the host product manufacturer is responsible for an external connector, for example with an RF pin and antenna trace design, the integration instructions shall inform the installer that a unique antenna connector must be used on Part 15 authorized transmitters used in the host product. The module manufacturers shall provide a list of acceptable unique connectors. Explanation: The EUT has a PCB Antenna, and the antenna uses a permanently attached antenna which is unique.

2.8 Label and compliance information

Grantees are responsible for the continued compliance of their modules to the FCC rules. This includes advising host product manufacturers that they need to provide a physical or e-label stating “Contains FCC ID” with their finished product. See Guidelines for Labeling and User Information for RF Devices KDB Publication 784748. Explanation: The host system using this module, should have a label in a visible area indicating the following text: “Contains FCC ID: 2A58X-GY-BT1.”

2.9 Information on test modes and additional testing requirements5

2.9 Information on test modes and additional testing requirements5

Additional guidance for testing host products is given in KDB Publication 996369 D04 Module Integration Guide. Test modes should take into consideration different operational conditions for a stand-alone modular transmitter in a host, as well as for multiple simultaneously transmitting modules or other transmitters in a host product.

The grantee should provide information on how to configure test modes for host product evaluation for different operational conditions for a stand-alone modular transmitter in a host, versus with multiple, simultaneously transmitting modules or other transmitters in a host.

Grantees can increase the utility of their modular transmitters by providing special means, modes, or instructions that simulate or characterizes a connection by enabling a transmitter. This can greatly simplify a host manufacturer’s determination that a module as installed in a host complies with FCC requirements.

Explanation: Top band can increase the utility of our modular transmitters by providing instructions that simulate or characterizes a connection by enabling a transmitter.

2.10 Additional testing, Part 15 Subpart B disclaimer

The grantee should include a statement that the modular transmitter is only FCC authorized for the specific rule parts (i.e., FCC transmitter rules) listed on the grant, and that the host product manufacturer is responsible for compliance with any other FCC rules that apply to the host not covered by the modular transmitter grant of certification. If the grantee markets their product as being Part 15 Subpart B compliant (when it also contains unintentional-radiator digital circuitry), then the grantee shall provide a notice stating that the final host product still requires Part 15 Subpart B compliance testing with the modular transmitter installed.

Explanation: The module is without unintentional-radiator digital circuitry, so the module does not require an evaluation by FCC Part 15 Subpart B. The host should be evaluated by the FCC Subpart B.



Documents / Resources

	<p>Granwin lot Technology GY-BT1 Bluetooth Module [pdf] User Manual</p> <p>GY-BT1, GYBT1, 2A58X-GY-BT1, 2A58XGYBT1, GY-BT1 Bluetooth Module, Bluetooth Module</p>
--	---