



# GRANDSTREAM GXV3470 High End Smart Video Phone for Android Installation Guide

[Home](#) » [GRANDSTREAM](#) » GRANDSTREAM GXV3470 High End Smart Video Phone for Android Installation Guide 

## Contents

- 1 GRANDSTREAM GXV3470 High End Smart Video Phone for Android
- 2 Introduction
  - 2.1 PRECAUTIONS:
- 3 OVERVIEW:
- 4 PACKAGE CONTENTS:
- 5 PHONE CONFIGURATION:
- 6 CONNECTING THE PHONE:
- 7 Tips for using the GXV3470 Keys
- 8 Documents / Resources
  - 8.1 References
- 9 Related Posts



**GRANDSTREAM GXV3470 High End Smart Video Phone for Android**



## Introduction

The GXV3470 is not pre-configured to support or carry emergency calls to any type of hospital, law enforcement agency, medical care unit ("Emergency Service(s)) or any other kind of Emergency Service. You must make additional arrangements to access Emergency Services. It is your responsibility to purchase SIP-compliant Internet telephone service, properly configure the GXV3470 to use that service, and periodically test your configuration to confirm that it works as you expect. If you do not do so, it is your responsibility to purchase traditional wireless or landline telephone services to access Emergency Services.

GRANDSTREAM DOES NOT PROVIDE CONNECTIONS TO EMERGENCY SERVICES VIA THE GXV3470. NEITHER GRANDSTREAM NOR ITS OFFICERS, EMPLOYEES OR AFFILIATES MAY BE HELD LIABLE FOR ANY CLAIM, DAMAGE, OR LOSS. YOU HEREBY WAIVE ANY AND ALL SUCH CLAIMS OR CAUSES OF ACTION ARISING FROM OR RELATING TO YOUR INABILITY TO USE THE GXV3470 TO CONTACT EMERGENCY SERVICES, AND YOUR FAILURE TO MAKE ADDITIONAL ARRANGEMENTS TO ACCESS EMERGENCY SERVICES IN ACCORDANCE WITH THE IMMEDIATELY PRECEDING PARAGRAPH.

The GNU GPL license terms are incorporated into the device firmware and can be accessed via the Web user interface of the device at [http\(s\)://P/gpl\\_license](http(s)://P/gpl_license).

To obtain a CD with GPL source code information please submit a written request to [info@grandstream.com](mailto:info@grandstream.com)

## PRECAUTIONS:

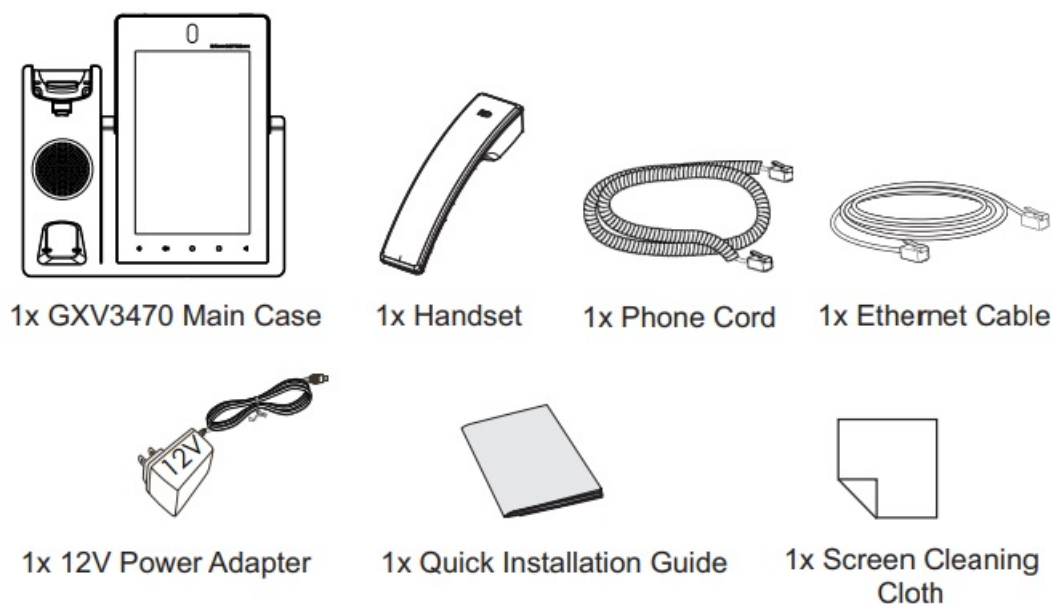
**WARNING:** Please DO NOT power cycle the GXV3470 during system boot up or firmware upgrade. You may corrupt firmware images and cause the unit to malfunction.

**WARNING:** Use only the power adapter included in the GXV3470 package. Using an alternative non-qualified power adapter may possibly damage the unit.

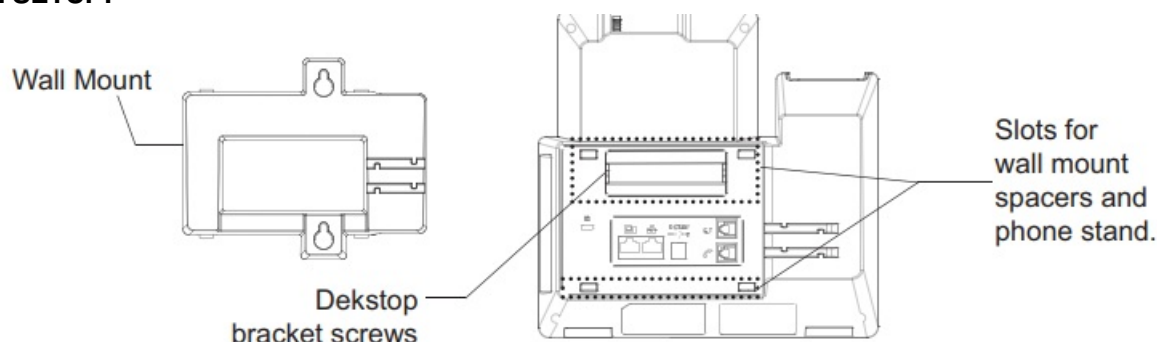
## OVERVIEW:

The GXV3470 is a powerful desktop video phone for enterprise users, which offers an all-in-one communications solution. This IP video phone delivers a powerful experience through its' 7 inch 1280×800 capacitive touch screen, advanced megapixel tiltable camera, dual microphones and support for HD video conferencing. The GXV3470 adds dual Gigabit ports with PoE/PoE+, integrated Wi-Fi 6 and Bluetooth 5.0 support. It also runs Android 11 and offers instant access to hundreds of thousands of Android apps. By combining a state-of-the-art IP video phone, an advanced video collaboration solution, and the functionality of an Android tablet, the GXV3470 offers businesses throughout the world a powerful desktop communication and productivity solution.

## PACKAGE CONTENTS:

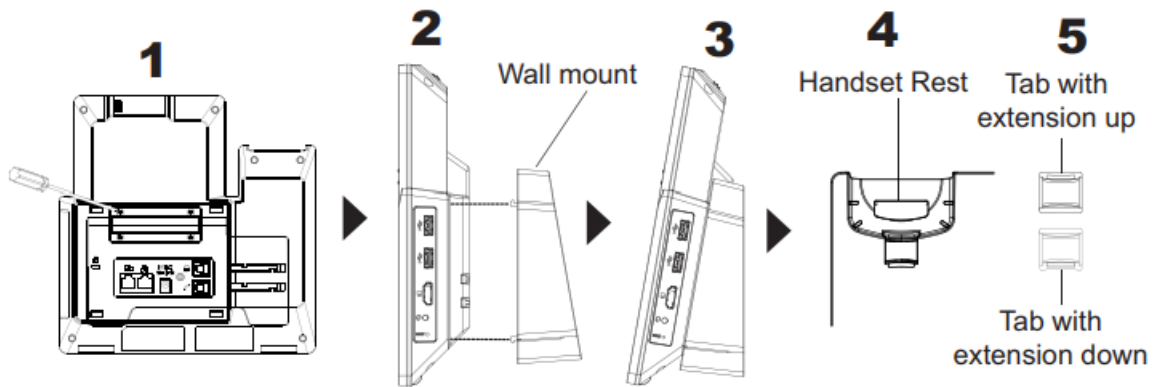


## PHONE SETUP:



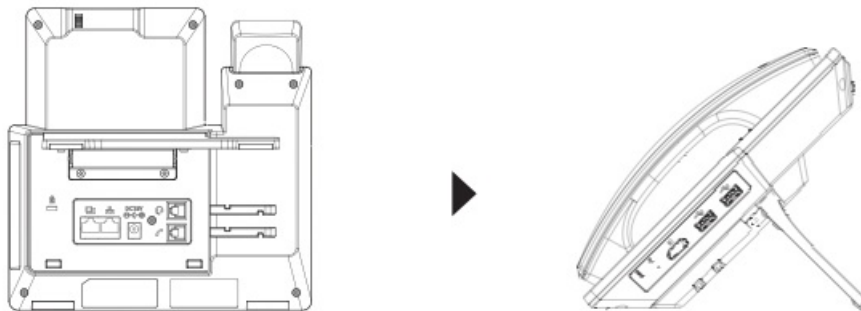
### Installing the Phone (Wall Mount \*Sold separately):

1. Remove the desktop bracket by unscrewing the 4 screws with a Philips head screwdriver.
2. Attach the wall mount to the slots on the back of the phone.
3. Attach the phone to the wall via the wall mount hole.
4. Pull out the tab from the handset cradle (see figure below).
5. Rotate the tab and plug it back into the slot with the extension up to hold the handset while the phone is mounted on the wall.



### Using the Phone Stand:

For installing the phone on the table with the phone stand, attach the phone stand by screwing the 4 screws on the upper half side using a philips head screwdriver (see figure below).



## PHONE CONFIGURATION:

Configuring the GXV3470 using Touch Screen:

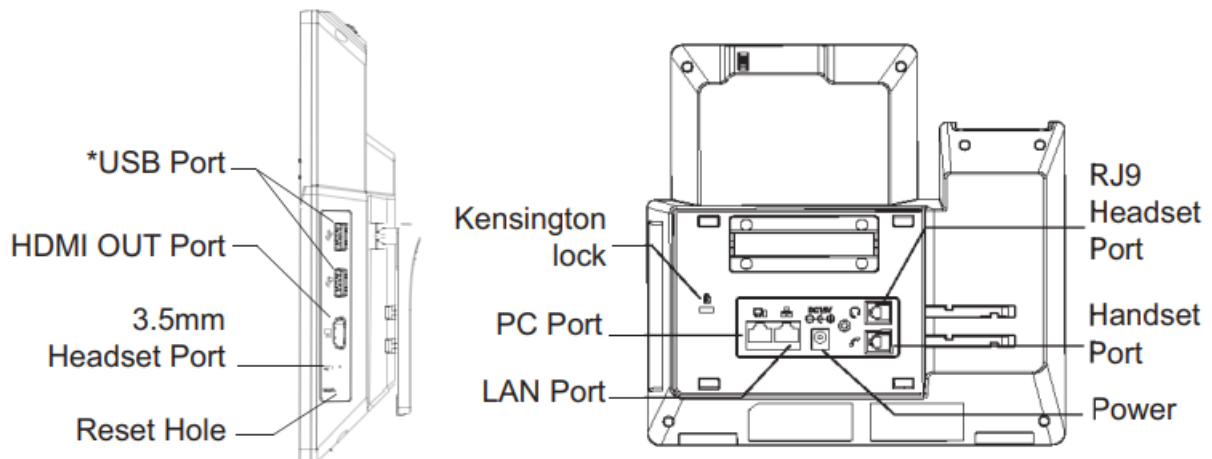
1. Make sure the phone is properly powered up and in idle screen.
2. Select Settings Advanced Account settings. Tap on one of the Account to configure Account name, SIP Server, SIP User ID, SIP Auth ID, SIP Auth Password to register account on the GXV3470. After successfully registered, the dial screen will be shown.
3. Follow the Menu options to configure other settings on the phone. For example, to configure static IP on the GXV3470, set up static IP address via LCD Menu Settings Network Ethernet Settings.
4. Please contact your ITSP (Internet Telephony Service Provider) for additional settings that may be necessary to configure the phone. Configuring the GXV3470 using Web Browser:
  1. Ensure your phone is properly powered up and connected to the Internet.
  2. Tap on Settings Status Network status, to obtain the IP address of your phone.
  3. Type the phone's IP address in your PC's browser.
  4. Enter username and password to login. (The default administrator username is "admin" and the default random password can be found at the sticker on the GXV3470).
  5. In the web GUI Account, select Account 1/2/3/.../16 page to configure Account name, SIP Server, SIP User ID, Authenticate ID and Authenticate Password to register the account on the GXV3470.



Refer to online documents and FAQ for more detailed information: <https://www.grandstream.com/support>

## CONNECTING THE PHONE:

1. Connect the handset and main phone case with the phone cord.
2. Connect the LAN port of the phone to the RJ45 socket of a hub/switch or a router (LAN side of the router) using the Ethernet cable.
3. Connect the 12V DC output plug to the power jack on the phone; plug the power adapter into an electrical outlet. If PoE switch is used in step 2, this step could be skipped.
4. The LCD will display booting up or firmware upgrading information. Before continuing, please wait for the main screen display to show up.
5. Using the web configuration interface or from the menu of the touch screen, you can further configure network connection using static IP, DHCP.. etc.

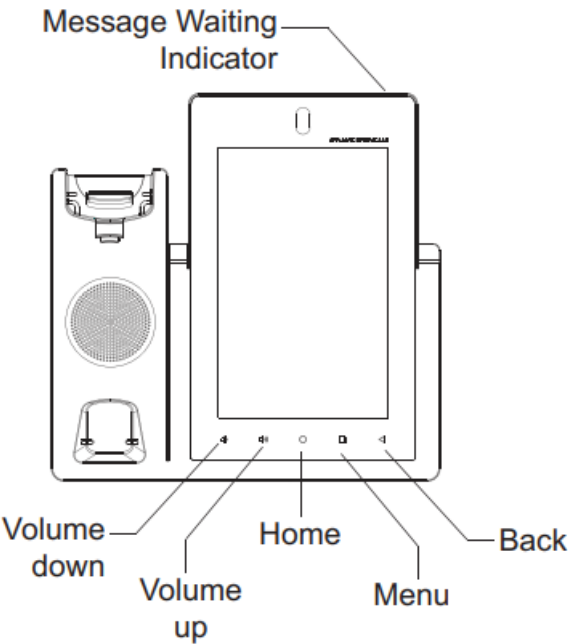


USB enabled only when power supply or PoE+ is used



## Tips for using the GXV3470 Keys

- Tap on VOLUME DOWN / UP keys to adjust volume on the phone.
- Tap on HOME key to return to the default idle screen. Or press and hold on the HOME key for 2 seconds to take a screenshot
- Press MENU key to access phone's display settings, edit widgets and thread manager. Or press and hold on the MENU key for 2 seconds to enter managing application interface directly.

- Press BACK key to go back to the previous menu.



Documents / Resources

	<a href="#">GRANDSTREAM GXV3470 High End Smart Video Phone for Android</a> [pdf] Installation Guide GXV3470, YZZGXV3470, High End Smart Video Phone for Android, GXV3470 High End Smart Video Phone for Android
	<a href="#">GRANDSTREAM GXV3470 High End Smart Video Phone for Android</a> [pdf] Installation Guide GXV3470, High End Smart Video Phone for Android, GXV3470 High End Smart Video Phone for Android, GXV3470 High End Smart Video Phone, Smart Video Phone, Video Phone, Phone

References

- [Global Leader in Digital Customer Experience | Concentrix \(CNXC\)](#)
- [Grandstream Networks - Networking & Unified Communications](#)
- [Products | Grandstream Networks](#)
- [Support- Grandstream Networks](#)