

GRANDSTREAM GWN7665 Wi-Fi 6E Access Point



# GRANDSTREAM GWN7665 Wi-Fi 6E Access Point Installation Guide

[Home](#) » [GRANDSTREAM](#) » GRANDSTREAM GWN7665 Wi-Fi 6E Access Point Installation Guide 

## Contents

- [1 GRANDSTREAM GWN7665 Wi-Fi 6E Access Point](#)
- [2 OVERVIEW](#)
- [3 PRECAUTIONS](#)
- [4 PACKAGE CONTENTS](#)
- [5 GWN7665 PORTS](#)
- [6 POWERING AND CONNECTING THE GWN7665](#)
- [7 HARDWARE INSTALLATION](#)
- [8 CONNECT TO GWN7665 DEFAULT Wi-Fi NETWORK](#)
- [9 ACCESSING THE CONFIGURATION INTERFACE](#)
- [10 Documents / Resources](#)
  - [10.1 References](#)



**GRANDSTREAM GWN7665 Wi-Fi 6E Access Point**



## OVERVIEW

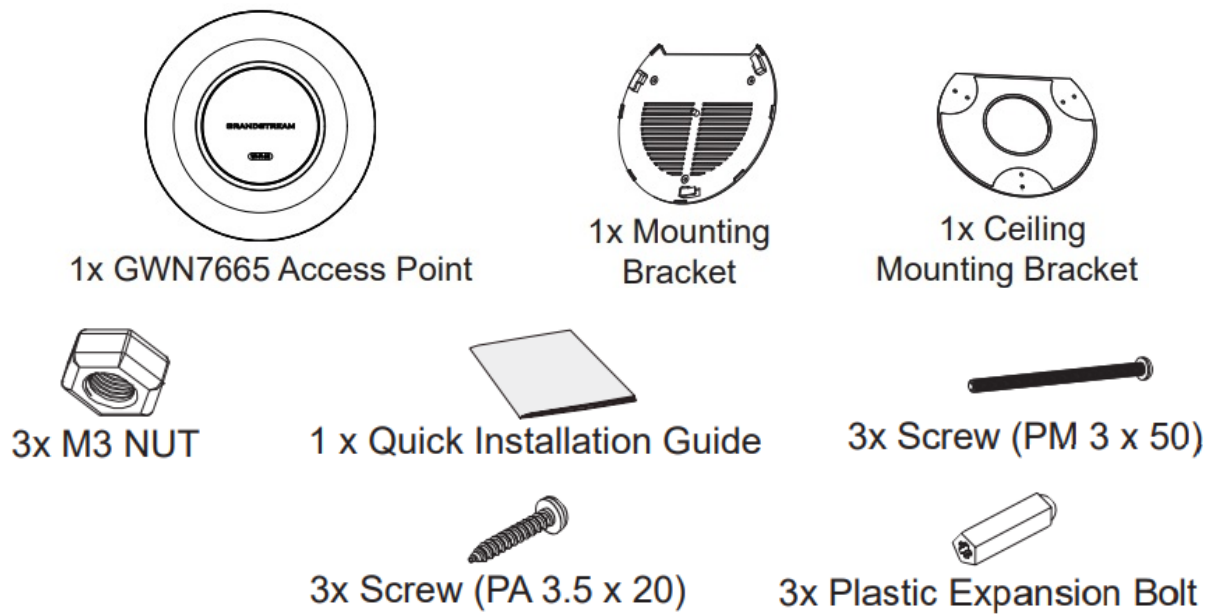
The GWN7665 is a powerful, enterprise-grade Wi-Fi 6E access point, ideal for small-to-medium-sized businesses, multiple-floor buildings, residential settings and commercial locations. It offers tri-band 2x2:2 MU-MIMO with DL/UL OFDMA technology and a sophisticated internal antenna design for stronger anti-interference, more stable connection, maximum network throughput and expanded Wi-Fi coverage range. The GWN7665 is supported by GWN. Cloud and GWN Manager, Grandstream's cloud and on-premise Wi-Fi management platform makes managing your network or several networks across multiple locations easier than ever before.

It also uses a controller-less network management architecture in which the controller is embedded within the product's web user interface for easy administration of locally deployed Wi-Fi APs. The GWN7665 is the ideal Wi-Fi AP for voice-over-Wi-Fi deployments and offers a seamless connection with Grandstream's Wi-Fi-capable IP phones. With support for advanced QoS, low-latency real-time applications, mesh networks, captive portals, 384 concurrent clients and dual Gigabit network ports with PoE+, the GWN7665 is an ideal Wi-Fi access point for business-grade wireless network deployments with medium-to-high user density.

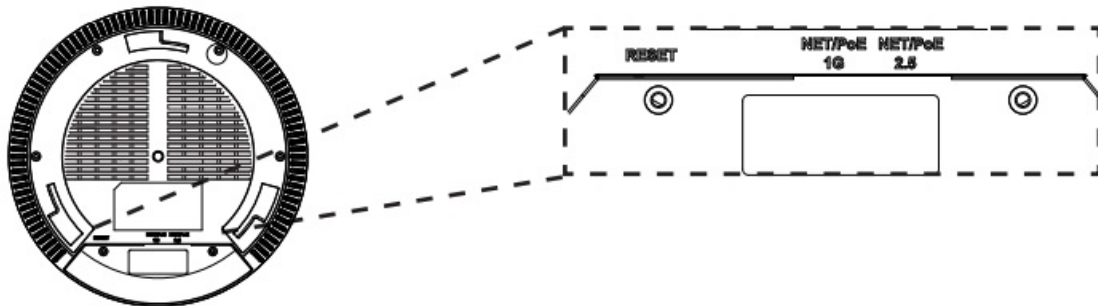
## PRECAUTIONS

- Do not attempt to open, disassemble, or modify the device.
- Do not expose this device to temperatures outside the range of 0 °C to 50 °C for operating and -10 °C to 60 °C for storage.
- Do not expose the GWN7665 to environments outside of the following humidity range: 10-95% RH (non-condensing).
- Do not power cycle your GWN7665 during system boot-up or firmware upgrade. You may corrupt firmware images and cause the unit to malfunction.

## PACKAGE CONTENTS



## GWN7665 PORTS



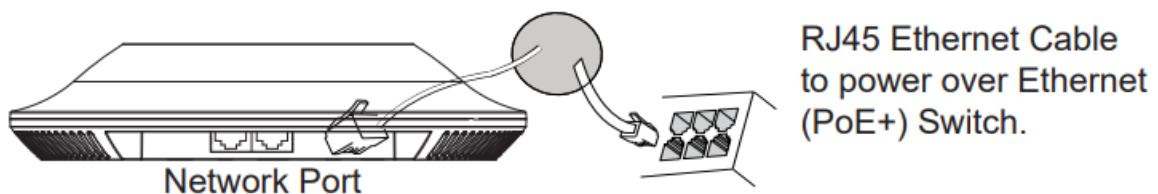
| Port         | Description  |
|--------------|--|
| NET/POE 2.5G | Ethernet RJ45 port (10Mbps /100Mbps /1Gbps /2.5Gbps) supporting PoE+.                        |
| NET/POE 1G   | Ethernet RJ45 port (10Mbps /100Mbps /1Gbps) to your router or another GWN76xx, support PoE+. |
| RESET        | Factory reset button.<br>Press for 7 seconds to reset factory default settings.              |

## POWERING AND CONNECTING THE GWN7665

GWN7665 can be powered on using a PoE+ switch using the following steps:

**Step 1:** Plug a RJ45 Ethernet cable into the network port of GWN7665.

**Step 2:** Plug the other end into the uplink port of the power over the Ethernet /DoCel switch.



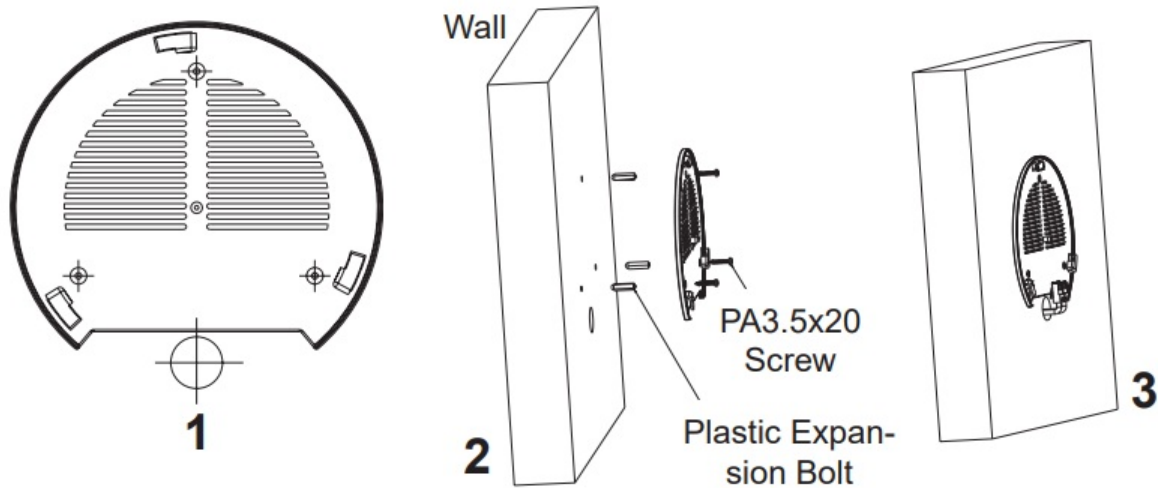
## HARDWARE INSTALLATION

GWN7665 can be mounted on the wall or ceiling, Please refer to the following steps for the appropriate

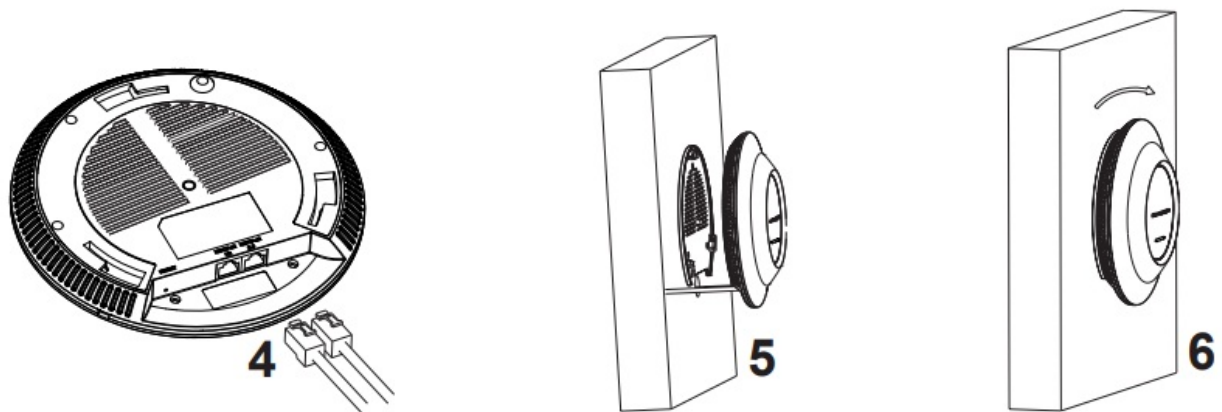
installation.

## Wall Mount

1. Position the mounting bracket at the desired location on the wall with the arrow pointing up.
2. Use a pencil to mark the four mounting holes (screw holes DIA 5.5mm, reticle hole DIA 25mm).
3. If your Ethernet cable feeds through the wall, then cut or drill a circle approximately 18mm in diameter.
4. Insert screw anchors into the 5.5mm holes. Attach the mounting bracket to the wall by inserting the screws into the anchors.



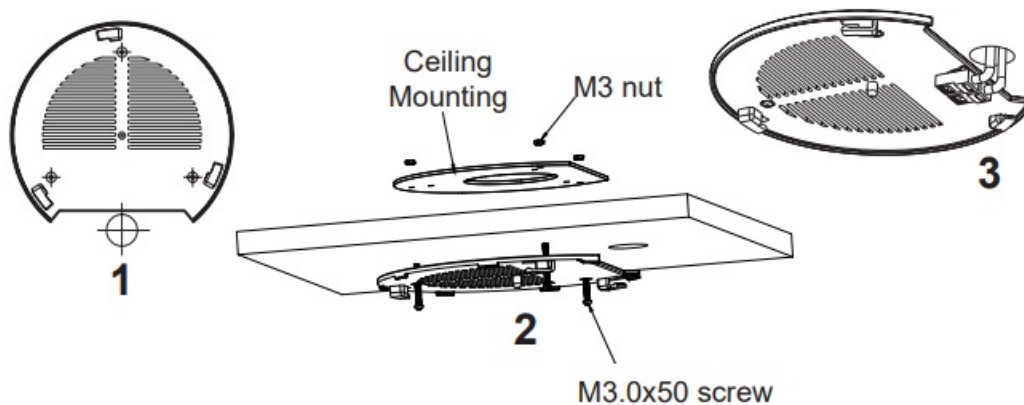
5. Connect the power cable and the ethernet cable (RJ45) to your GWN7665.
6. Align the arrow on the GWN7665 AP with the arrow on the locking tab of the mounting bracket and ensure that the device is firmly seated on the mounting bracket.
7. Turn the GWN7665 clockwise until it locks into place and fits the locking tab.



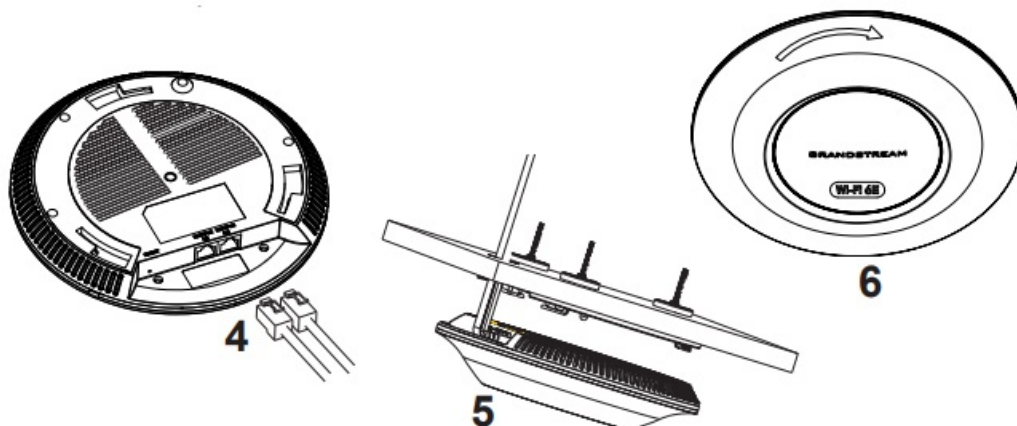
## Ceiling Mount

**Note:** Ceiling mounting is recommended for optimal coverage performance.

1. Remove the ceiling tile.
2. Place the ceiling backing plate in the centre of the ceiling tile and mark the mounting screw holes (screw holes DIA 5.5mm, reticle hole DIA 25mm).
3. Insert the screws through the mounting bracket.



4. Connect the Ethernet cable (RJ45) to the correct ports of your GWN7665.



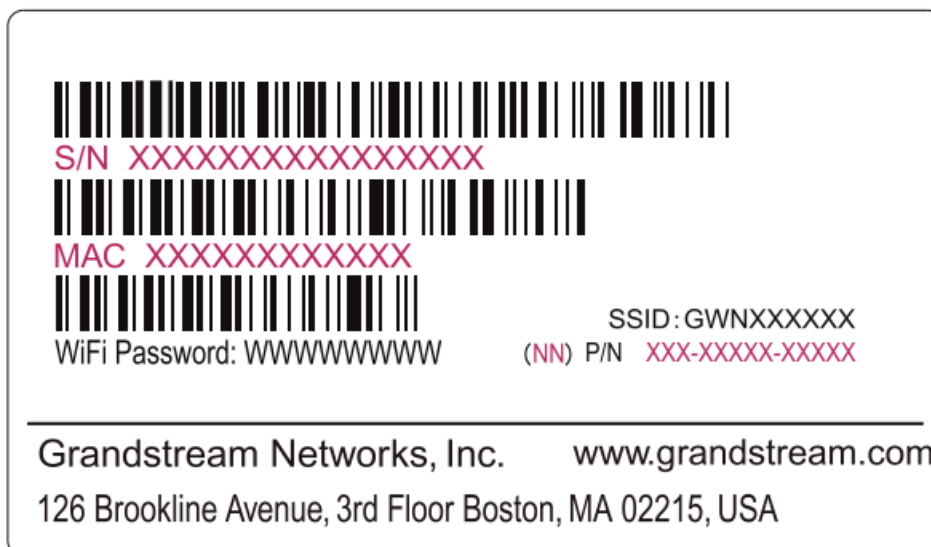
5. Align the arrow on the GWN7665 with the arrow on the locking tab of the mounting bracket to ensure that the device is firmly seated on the mounting bracket and connect the network and power cables.

6. Turn the GWN7665 clockwise until it locks into place and fits the locking tab.

## CONNECT TO GWN7665 DEFAULT Wi-Fi NETWORK

GWN7665 can be used as a standalone access point out of the box, or after a factory reset with Wi-Fi enabled by default. After powering the GWN7665 and connecting it to the network, GWN7665 will broadcast a default SSID based on its MAC address GWN[MAC's last 6 digits] and a random password.

**Note:** GWN7665's default SSID and password information are printed on the MAC. tan of the unit.



## ACCESSING THE CONFIGURATION INTERFACE

A computer connected to the GWN7665's SSID, or to the same network as the GWN7665 can discover and access its configuration interface- in one of the below methods:

### Method 1: Discover GWN7665 using its MAC Address

1. Locate the MAC address on the MAC tag of the unit, which is on the underside of the device, or the package.
2. From a computer connected to the same network as the GWN7665, type in the following address using GWN7665's MAC address on your browser [https://gwn\\_<mac>.local](https://gwn_<mac>.local)
3. Example: If a GWN7665 has the MAC address 00:0B:82:8C:4D: F8, this unit can be accessed by typing [https://gwn\\_000b828c4df8.local](https://gwn_000b828c4df8.local) on the browser.

### Method 2: Discover GWN7665 using the GWN Discovery Tool

1. Download and install the GWN Discovery Tool from the following link:  
<https://www.grandstream.com/tools/GWNDiscoveryTool.zip>
2. Open the GWN DiscoveryTool, and click on Scan.
3. The tool will discover all GWN76XX Access Points connected to the network showing their MAC and IP addresses.
4. Click on Manage Device to be redirected directly to the GWN7665's configuration interface, or type in manually the displayed IP address on your browser.
5. Enter username and password to log in. (The default administrator user-name is "admin" and the default random password can be found on the sticker on the GWN7665).



### Notes


- Make sure that the GWN7665 is not already paired with another GWN76xx access point as a slave, GWN Router or GWN. Cloud, otherwise the configuration interface cannot be accessed.
- If the GWN7665 is already paired, make sure to unpair it first, or do a factory reset.
- It is the customer's responsibility to ensure compliance with local regulations for frequency bands, transmit power and others.
- To manage GWN7665 over the cloud, please refer to <https://www.gwn.cloud>.

The GNU GPL license terms are incorporated into the device firmware and can be accessed via the Web using merlace of the dance army device pigpl loans. A con ase be socassed nire. noossrwaw. grand lo obtain a CU with

GPL source code information please submit a written request to [info@grandstream.com](mailto:info@grandstream.com) Refer to online documents and FAQ for more detailed information: [ntine:/wanyaronde.roamcaminiir.netter](http://ntine:/wanyaronde.roamcaminiir.netter)

---

## Documents / Resources

|   |   |
|---|---|
|  | <a href="#">GRANDSTREAM GWN7665 Wi-Fi 6E Access Point</a> [pdf] Installation Guide<br>GWN7665 Wi-Fi 6E Access Point, GWN7665, Wi-Fi 6E Access Point, Access Point |
|---|---|

## References

- [Open Source Software](#)
- [Global Leader in Digital Customer Experience | Concentrix \(CNXC\)](#)
- [Grandstream Networks - Networking & Unified Communications](#)
- [Grandstream Networks - Networking & Unified Communications](#)
- [Open Source Software](#)
- [Products | Grandstream Networks](#)
- [Support- Grandstream Networks](#)
- [gwn](#)
- [User Manual](#)

### Manuals+, Privacy Policy

This website is an independent publication and is neither affiliated with nor endorsed by any of the trademark owners. The "Bluetooth®" word mark and logos are registered trademarks owned by Bluetooth SIG, Inc. The "Wi-Fi®" word mark and logos are registered trademarks owned by the Wi-Fi Alliance. Any use of these marks on this website does not imply any affiliation with or endorsement.