

GRANDSTREAM GWN7603 Wi-Fi Access Points



GRANDSTREAM GWN7603 Wi-Fi Access Points Installation Guide

[Home](#) » [GRANDSTREAM](#) » GRANDSTREAM GWN7603 Wi-Fi Access Points Installation Guide 

Contents

- [1 GRANDSTREAM GWN7603 Wi-Fi Access Points](#)
- [2 OVERVIEW](#)
- [3 PRECAUTIONS](#)
- [4 PACKAGE CONTENTS](#)
- [5 POWERING AND CONNECTING THE GWN7603](#)
- [6 HARDWARE INSTALLATION](#)
- [7 ACCESSING THE CONFIGURATION INTERFACE](#)
- [8 Documents / Resources](#)
 - [8.1 References](#)



GRANDSTREAM GWN7603 Wi-Fi Access Points



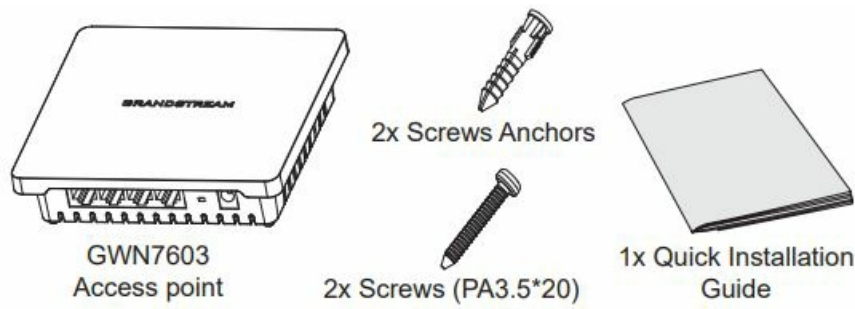
OVERVIEW

The GWN7603 is a compact Wi-Fi access point designed for small businesses, homes, offices, hotels and more. It provides three Gigabit ports to provide IP phones, IPTV, computers, and similar devices with ethernet while also providing an uplink Gigabit network port with PoE/PoE+ and PSE. The GWN7603 offers dual-band 2x2:2 MU-MIMO technology and a sophisticated antenna design for ideal network throughput that supports up to 100+ clients and a 100 meters coverage range. To ensure easy installation and management, the GWN7603 is supported by GWN.Cloud, Grandstream's free cloud Wi-Fi management platform. The GWN7603 is the ideal Wi-Fi AP for voice-over-Wi-Fi deployments and offers a seamless connection with Grandstream's Wi-Fi-capable voice and video IP phones. By including support for advanced QoS, low-latency real-time applications, mesh networks, and captive portals, the GWN7603 is a wireless access point built for deployment scenarios with small to medium user density.

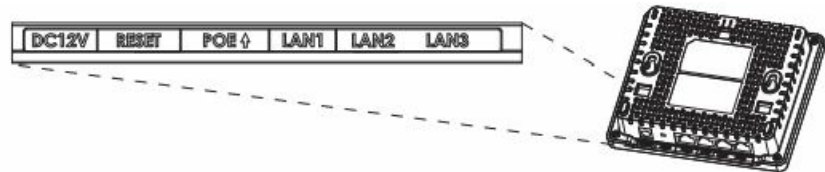
PRECAUTIONS

- Do not attempt to open, disassemble, or modify the device.
- Do not expose this device to temperatures outside range of 0 °C to 45 °C for operating and -10 °C to 60 °C for storage.
- Do not expose the GWN7603 to environments outside of the following humidity range: 10-90% RH (non-condensing).
- Do not power cycle your GWN7603 access point during system boot-up or firmware upgrade. You may corrupt firmware images and cause the unit to malfunction.

PACKAGE CONTENTS



GWN7603 PORTS



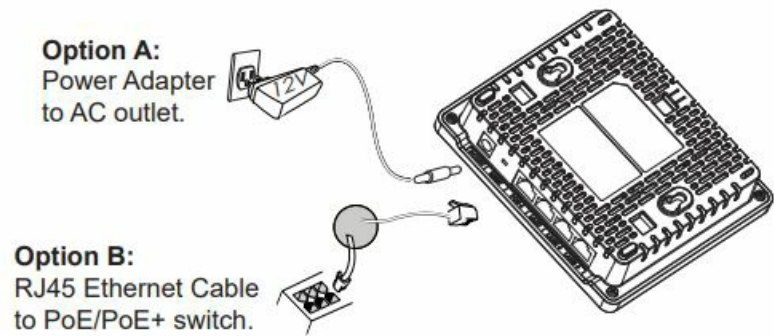
Port	Description
DC12V	Power adapter connector (DC 12V,2A).
RESET	Factory reset pinhole. Press for 7 seconds to reset factory default settings.
POE	Ethernet RJ45 port (10/100/1000Mbps) supporting PoE/PoE+.
LAN1	1 x 10/100/1000Mbps Ethernet port.
LAN2 LAN3	2 x 10/100/1000Mbps Ethernet port with PSE.

Notes:

- If GWN7603 is powered by POE+ or a PSU (DC 12V, 2A) (not provided). It will support 12W total for LAN2/LAN3 PSE output.
- If the input is PoE, GWN7603 will only support 6W total for LAN2/ LAN3 PSE output.

POWERING AND CONNECTING THE GWN7603

The GWN7603 can be powered either using the right PSU (DC12V, 2A) (not provided) or using a PoE/PoE+ switch:

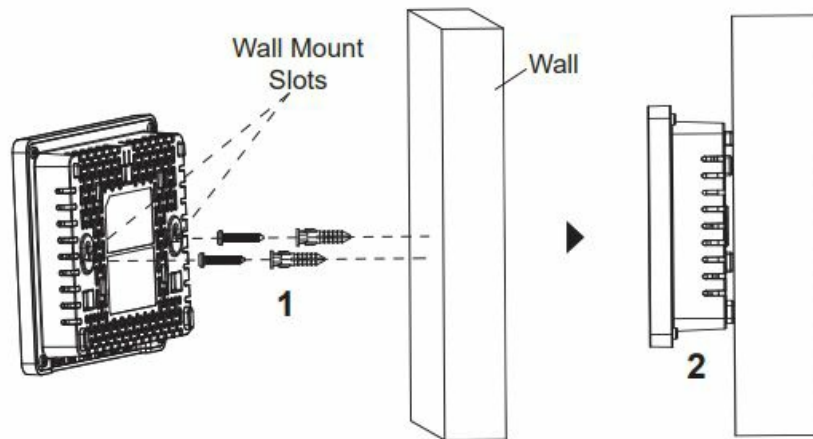


HARDWARE INSTALLATION

GWN7603 can be mounted on the wall. Please refer to the following steps for the appropriate installation.

Wall Mount

1. Use a measuring tape to measure the distance between the two wall mount slots on the back of the GWN7603 access point and use a pencil to mark the mounting screw holes on the wall.
2. Use a drill to make a hole at each marked point. Place the anchors and screws on each hole. Leave enough space between the wall and the screw head, then mount the GWN7603 on the screws using the wall mounting slots.



CONNECT TO GWN7603 DEFAULT Wi-Fi NETWORK

GWN7603 can be used as standalone access point out of box, or after factory reset with Wi-Fi enabled by default. After powering the GWN7603 and connecting it to the network, GWN7603 will broadcast a default SSID based on its MAC address GWN[MAC's last 6 digits] and a random password.

Note: GWN7603's default password information is printed on the sticker on the back of the unit.

ACCESSING THE CONFIGURATION INTERFACE

A computer connected to the GWN7603's SSID, or to the same network as the GWN7603 can discover and access its configuration interface using one of the below methods:

Method 1: Discover GWN7603 using its MAC Address

1. Locate the MAC address on the MAC tag of the unit, which is on the underside of the device, or on the package.
2. From a computer connected to same network as the GWN7603, type in the following address using GWN7603's MAC address on your browser https://gwn_<mac>.local

Example: If a GWN7603 has the MAC address CO:74:AD:8C:4D: F8, this unit can be accessed by typing https://gwn_c074ad8c4df8.local on the browser.



Method 2: Discover GWN7603 using the GWN Discovery Tool

1. Download and install GWN Discovery Tool from the following link:
 - <https://www.grandstream.com/tools/GWNDiscoveryTool.zip>
2. Open the GWN Discovery Tool, and click on Scan.
3. The tool will discover all GWN76xx Access Points connected on the network showing their MAC and IP addresses.
 - www.grandstream.com
4. Click on Manage Device to be redirected directly to the GWN7603's configuration interface, or type in manually the displayed IP address on your browser.
5. Enter username and password to login. (The default administrator username is "admin" and the default random password can be found on the sticker on the GWN7603).



Notes:

- Make sure that the GWN7603 is not already paired with another GWN76xx Access Point, GWN Router Series, GWN. Cloud or GWN Manager, otherwise the configuration interface cannot be accessed.
- If the GWN7603 is already paired, make sure to unpair it first, or do a factory reset.
- It is the customer's responsibility to ensure compliance with local regulations for frequency bands, transmit power and others.
- To manage GWN7603 over the cloud, please refer to <https://www.gwn.cloud>.

The GNU GPL license terms are incorporated into the device firmware and can be accessed via the Web user interface of the device at `my_device_ip/gp|_license`. It can also be accessed here:

- <https://www.grandstream.com/legal/open-source-software>

To obtain a CD with GPL source code information please submit a written request to

- info@grandstream.com

Refer to online documents and FAQ for more detailed information:

- <https://www.grandstream.com/our-products>



Documents / Resources

	GRANDSTREAM GWN7603 Wi-Fi Access Points [pdf] Installation Guide GWN7603 Wi-Fi Access Points, GWN7603, Wi-Fi Access Points, Access Points, Points
---	--

References

- [User Manual](#)

Manuals+, Privacy Policy

This website is an independent publication and is neither affiliated with nor endorsed by any of the trademark owners. The "Bluetooth®" word mark and logos are registered trademarks owned by Bluetooth SIG, Inc. The "Wi-Fi®" word mark and logos are registered trademarks owned by the Wi-Fi Alliance. Any use of these marks on this website does not imply any affiliation with or endorsement.