



GRANDSTREAM GSC3516 SIP Multicast Talk-Back Speaker Installation Guide

[Home](#) » [GRANDSTREAM](#) » GRANDSTREAM GSC3516 SIP Multicast Talk-Back Speaker Installation Guide 

Contents

- [1 GRANDSTREAM GSC3516 SIP Multicast Talk-Back Speaker](#)
- [2 OVERVIEW](#)
- [3 PRECAUTIONS](#)
- [4 PACKAGE CONTENTS](#)
- [5 GSC3516 PORTS](#)
- [6 HARDWARE INSTALLATIO](#)
- [7 Ceiling Mount](#)
- [8 Anti-theft Installation](#)
- [9 POWERING AND CONNECTING GSC3516](#)
- [10 ACCESSING THE CONFIGURATION INTERFACE](#)
- [11 Documents / Resources](#)
 - [11.1 References](#)
- [12 Related Posts](#)



GRANDSTREAM GSC3516 SIP Multicast Talk-Back Speaker



The GSC3516 is not pre-configured to support or make emergency calls to any type of hospital, law enforcement agency, medical care unit ("Emergency Service(s)") or any other kind of Emergency Service. You must make additional arrangements to access Emergency Services. It is your re-sponsibility to purchase SIP-compliant Internet telephone service, properly configure the GSC3516 to use that ser-vice, and periodically test your configuration to confirm that it works as you expect. It is also your responsibility to pur-chase traditional wireless or landline telephone services to access Emergency Services. GRANDSTREAM DOES NOT PROVIDE CONNECTIONS TO EMERGENCY SERVICES VIA THE GSC3516. NEI-THER GRANDSTREAM NOR ITS OFFICES, EMPLOY-EES OR AFFILIATES MAY BE HELD LIABLE FOR ANY CLAIM, DAMAGE, OR LOSS, AND YOU HEREBY WAIVE ANY AND ALL SUCH CLAIMS OR CAUSES OF ACTION ARISING FROM OR RELATING TO YOUR INABILITY TO USE THE GSC3516 TO CONTACT EMERGENCY SER-VICES, AND YOUR FAILURE TO MAKE ADDITIONAL AR-RANGEMENTS TO ACCESS EMERGENCY SERVICES IN ACCORDANCE WITH THE IMMEDIATELY PRECEDING PARAGRAPH. The GNU GPL license terms are incorporated into the de-vice firmware and can be accessed via the Web user inter-face of the device at `my_device_ip/gpl_license`. It can also be accessed here: <http://www.grandstream.com/legal/open-source-software> To obtain a CD with GPL source code information please submit a written request to info@grandstream.com

OVERVIEW

The GSC3516 is a SIP intercom speaker and microphone that allows offices, schools, hospitals, apartments and more to build powerful voice intercom solutions that expand security and communication. This robust SIP intercom device offers 2-way voice functionality with both a high-fidelity 15W HD speaker and 3 directional microphones with Multichannel Microphone Array Design (MMAD) and 1 omnidirectional auxiliary microphone that offer a 4.2 meter pickup distance. The GSC3516 supports a wide-range of peripherals including Bluetooth devices, built-in whitelist and blacklists to easily block unwanted calls, integrated dual-band Wi-Fi and advanced acoustic echo cancellation. By pairing the GSC3516 with other Grandstream devices, in-cluding desktop and cordless IP phones as well as the GDS series of Facility Access products, users can easily sculpt a state-of-the-art security and voice intercom solution. Thanks to it's modern industrial design, cleanable exterior surface and rich features, the GSC3516 is the ideal intercom speaker/micro-phone for any setting.

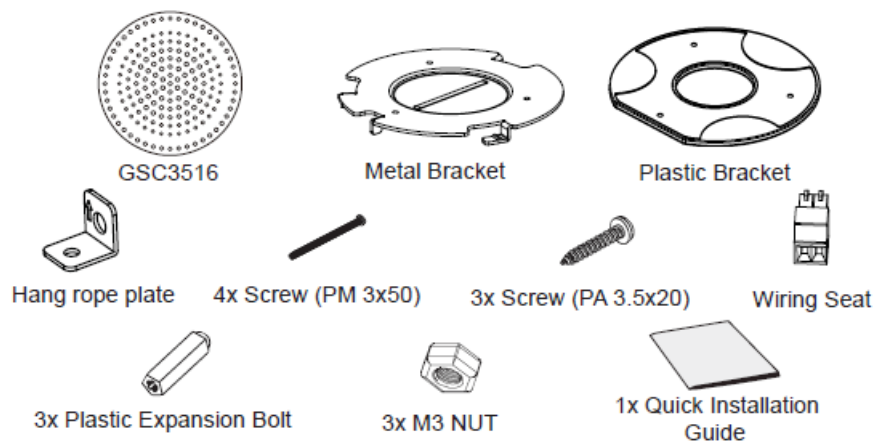
PRECAUTIONS

- Do not attempt to open, disassemble, or modify the device.
- Do not expose this device to temperatures outside range of 0 °C to 45 °C in operation and -10 °C to 60 °C in storage.
- Do not expose the GSC3516 to environments outside of the following hu-midity range: 10-90% RH (non-

condensing).

- Do not power cycle your GSC3516 during system boot up or firmware up-grade. You may corrupt firmware images and cause the unit to malfunction.

PACKAGE CONTENTS



GSC3516 PORTS

Reset:

Factory reset button. Press for 10 seconds to reset factory default settings.

NET/PoE

Ethernet RJ45 port (10/100Mbps) supporting PoE/PoE+.

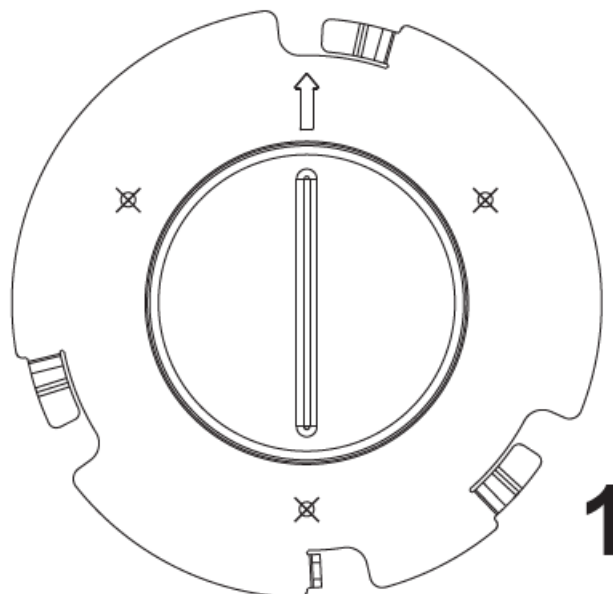
2-Pin port

2-pin multi-purpose input port.

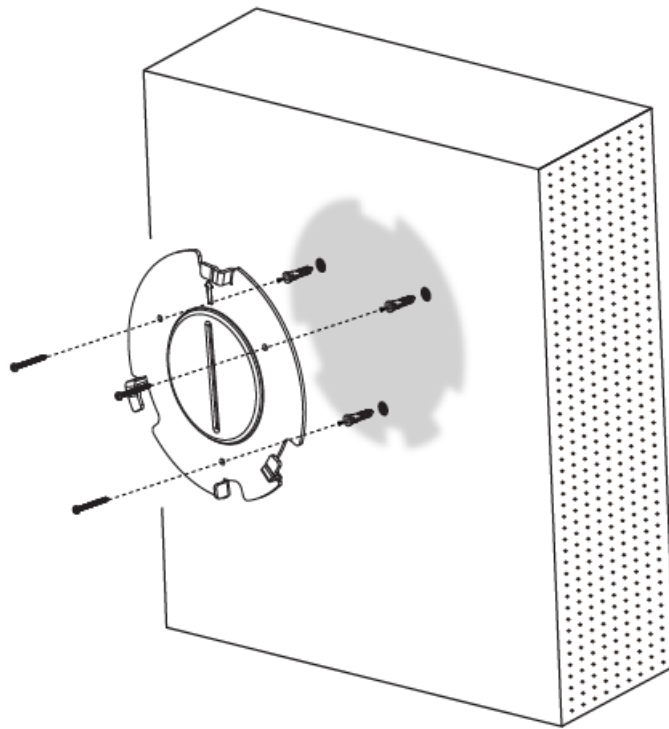
HARDWARE INSTALLATIO

GSC3516 can be mounted on the wall or ceiling. Please refer to the following steps for the appropriate installation.
Wall Mount

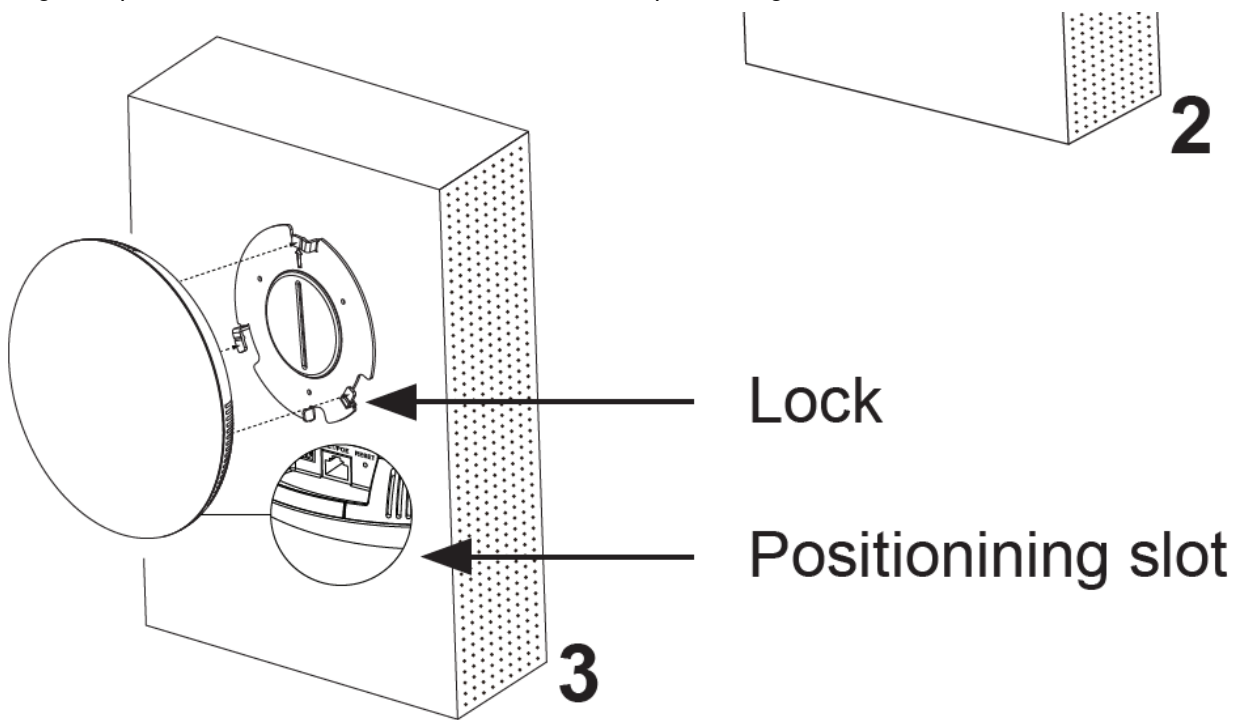
1. Locate the equipment holder on the desired position with arrow up. Drill three holes on the wall referring to the positions of holes on the metal bracket.



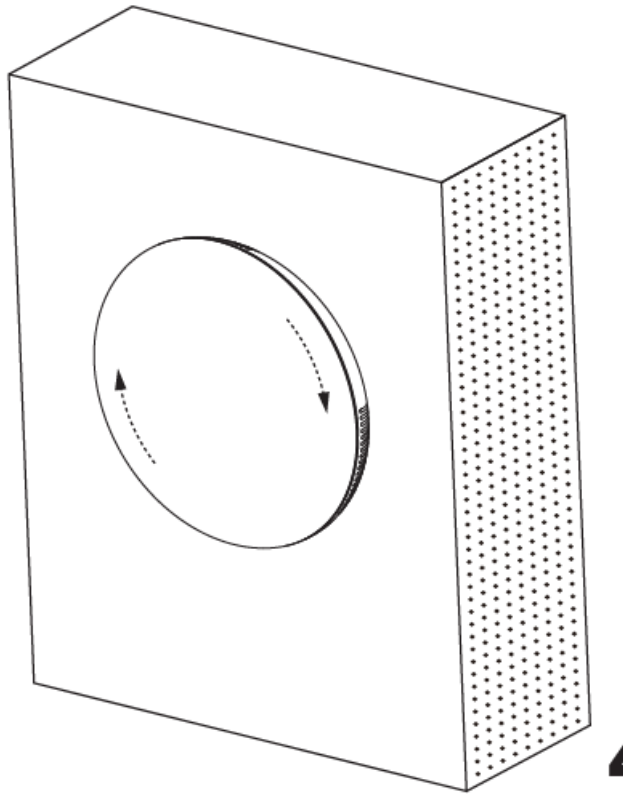
2. Fix the metal bracket on the wall by expansion screws.



3. Align the position line on device's back cover with the positioning slot.

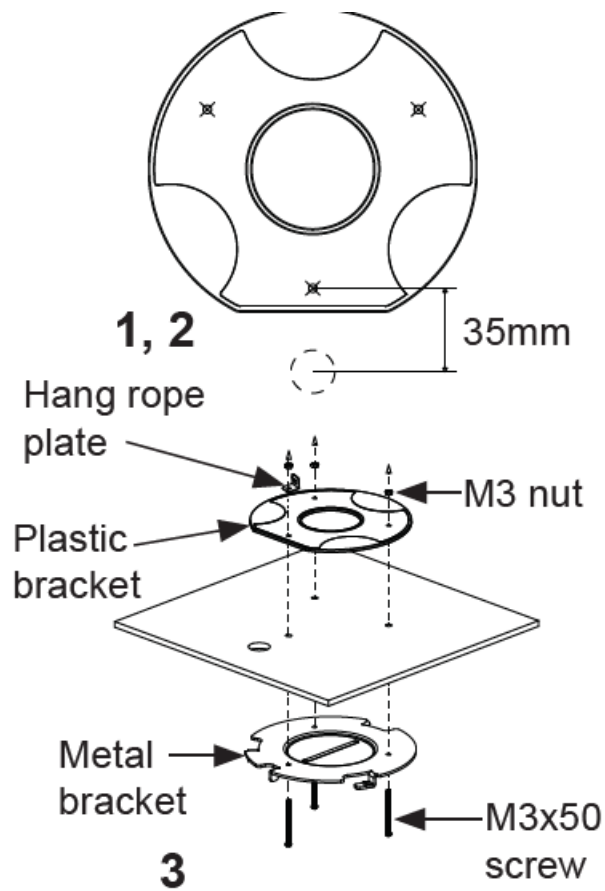


4. Rotate the device clockwise untill it is locked on the right postion.

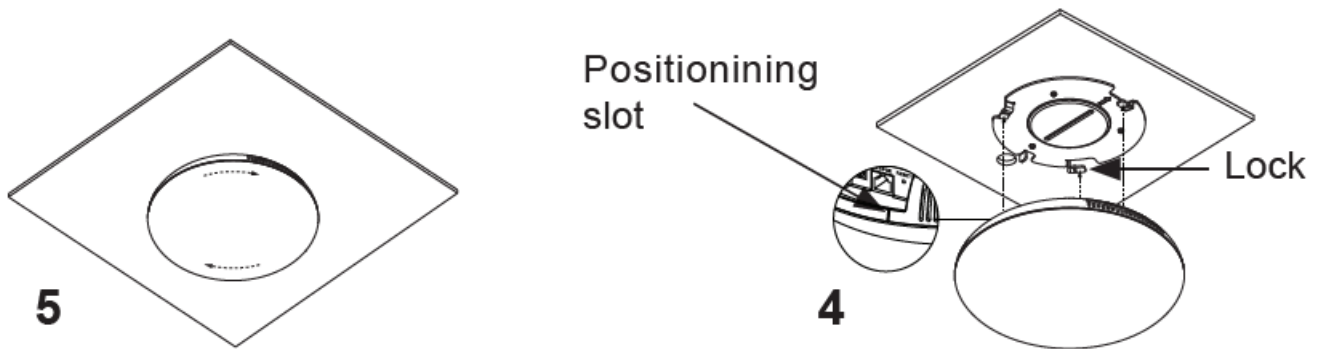


Ceiling Mount

1. Put the ceiling mounting (metal bracket) in the ceiling's center and mark the position of the three screw holes.
2. Drill a round hole with a diameter of 18mm for Ethernet cable. The distance between its center and the highlighted hole on the plastic bracket should be 35mm.
3. Fix the plastic and metal brackets on the ceiling with flat-head screws and lock-nuts. Then place an Ethernet cable pass through the 18mm-round hole.

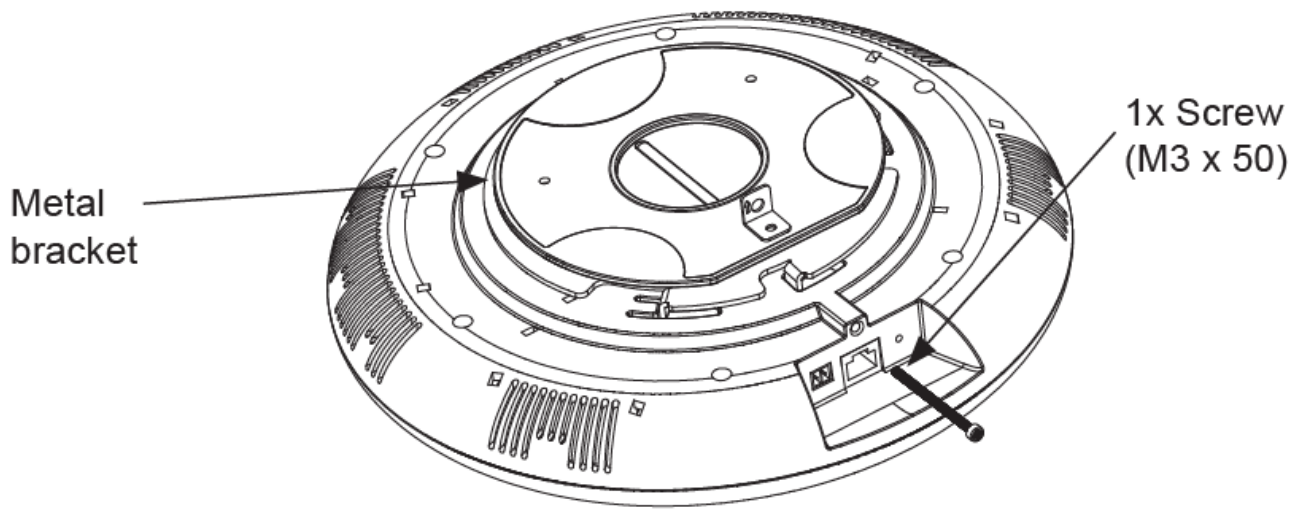


4. Align the position line on device's back cover with the positioning slot.
5. Rotate the device clockwise until it is locked on the right position.



Anti-theft Installation

After the device is assembled with the metal bracket support on the wall or ceiling, use the anti-detachable screw (M3 x 50) in order to prevent theft.



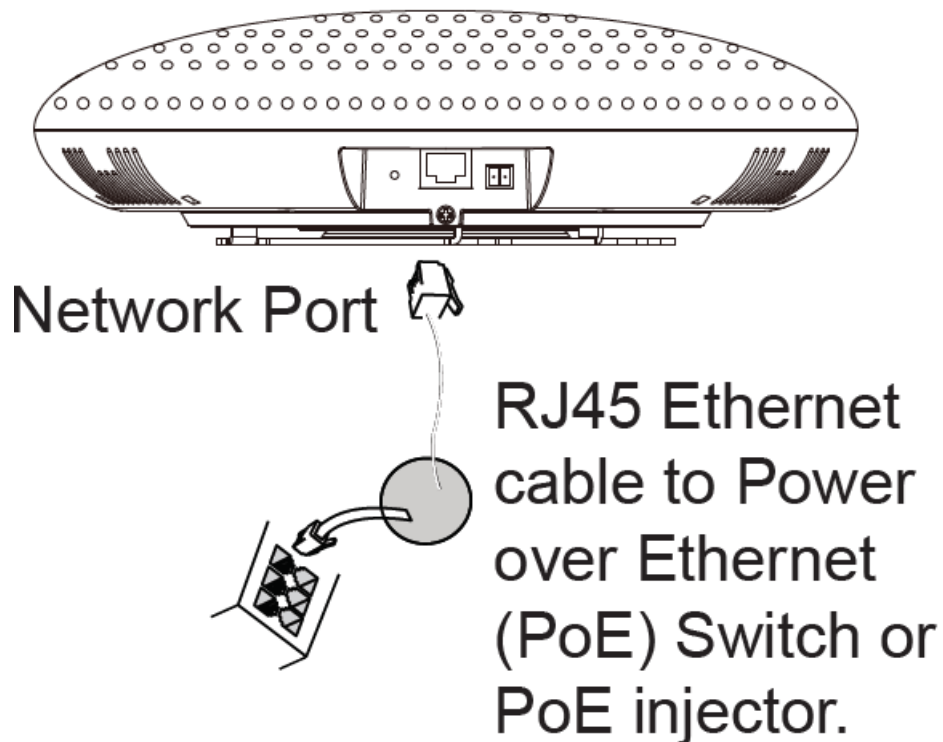
POWERING AND CONNECTING GSC3516

GSC3516 can be powered on using PoE/PoE+ switch or PoE injector using following steps:

Step 1: Plug a RJ45 Ethernet cable into the network port of the GSC3516.

Step 2: Plug the other end into the power over Ethernet (PoE) switch or PoE injector.

Note: It is recommended to use PoE+ power supply to achieve the best audio effect.



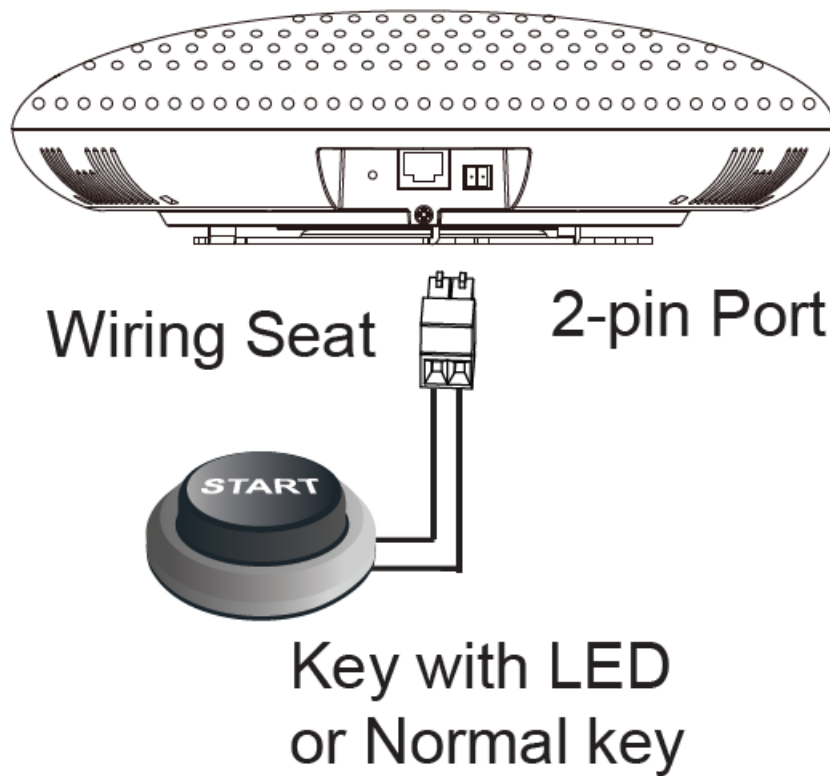
Connecting Wiring Seat

GSC3516 support to connect a "Key & LED" or "Nor-mal Key" to 2-pin port via Wiring Seat.

Step 1: Take the wiring seat from the install kits.

Step 2: Connect the Key & LED or Normal Key with the wiring seat (as shown in the illustration on the right).

Note: This port supports the parallel connection of an incandescent lamp (with less than 1W) or an LED lamp (with less than 100mA).



ACCESSING THE CONFIGURATION INTERFACE

A computer connected to the same network as the GSC3516 can discover and access its configuration interface using its MAC address :

1. Locate the MAC address on the MAC tag of the unit, which is on the underside of the device, or on the package.
2. From a computer connected to same network as the GSC3516, type in the following address using the GSC3516's MAC address on your browser: http://gsc_<mac>.local

Example: if a GSC3516 has the MAC address C0:74:AD:11:22:33, this unit can be accessed by typing http://gsc_c074ad112233.local on the browser.

For more information, please download the GSC3516 User Manual from: <http://www.grandstream.com/support>

Documents / Resources

| | |
|--|---|
| | GRANDSTREAM GSC3516 SIP Multicast Talk-Back Speaker [pdf] Installation Guide GSC3516, SIP Multicast Talk-Back Speaker, GSC3516 SIP Multicast Talk-Back Speaker |
|--|---|

References

- [Open Source Software](#)
- [Global Leader in Digital Customer Experience | Concentrix \(CNXC\)](#)
- [Grandstream Networks - Networking & Unified Communications](#)
- [Grandstream Networks - Networking & Unified Communications](#)

- [!\[\]\(71ac35c616fd8bfda805d579390e24d8_img.jpg\) Open Source Software](#)
- [!\[\]\(b10a8b91056068472be58f587e00cb47_img.jpg\) Support- Grandstream Networks](#)

Manuals+.