

GRANDSTREAM GSC3506 V2 SIP Multicast Intercom Speaker



# GRANDSTREAM GSC3506 V2 SIP Multicast Intercom Speaker Installation Guide

[Home](#) » [GRANDSTREAM](#) » GRANDSTREAM GSC3506 V2 SIP Multicast Intercom Speaker Installation Guide 

## Contents

- [1 GRANDSTREAM GSC3506 V2 SIP Multicast Intercom Speaker](#)
- [2 Product Usage Instructions](#)
- [3 OVERVIEW](#)
- [4 PACKAGE CONTENTS](#)
- [5 GSC3506 V2 PORTS AND BUTTONS](#)
- [6 HARDWARE INSTALLATION](#)
- [7 Ceiling Mount](#)
- [8 Boom Mount](#)
- [9 POWERING AND CONNECTING GSC3506 V2](#)
- [10 ACCESSING THE CONFIGURATION INTERFACE](#)
- [11 Documents / Resources](#)
  - [11.1 References](#)
- [12 Related Posts](#)



**GRANDSTREAM GSC3506 V2 SIP Multicast Intercom Speaker**



## Product Specifications

- Model: GSC3506 V2
- Manufacturer: Grandstream Networks, Inc.
- Address: 126 Brookline Ave, 3rd Floor Boston, MA 02215. USA
- Telephone: +1 [617-566-9300](tel:617-566-9300)
- Website: [www.grandstream.com](http://www.grandstream.com)
- Ports: USB 2.0, Auxiliary Ports, DC24V, Ethernet RJ45 (10/100Mbps)
- Features: SIP/Multicast Intercom Speaker

## Product Usage Instructions

### Package Contents

- Ceiling Mount Kit (optional and sold separately)
- 1x GSC3506 V2 Mounting Hole Cut-Out Template
- 1x Quick Installation Guide
- 1x Ceiling Bracket
- 8x Screws (M4)

### Ports and Buttons

Refer to the back panel and front panel descriptions for the various ports and buttons available on the GSC3506 V2.

## Hardware Installation

### Ceiling Mount

1. Drill a round hole with a diameter of 230mm or use the Mounting Hole Cut-Out Template.

2. Fix the Ceiling Bracket using the provided screws if using the Ceiling Bracket Kit.
3. To ensure safety, install anti-fall ropes before plugging in Ethernet and other cables.
4. Open the front cover with a flat-head screwdriver.
5. Align the device with the hole and push up slowly with two hands, avoiding pressing the horn with your hands.

## Frequently Asked Questions (FAQ)

- Q: Is the GSC3506 V2 pre-configured to support emergency services?

A: No, the GSC3506 V2 is not pre-configured to support or make connections to emergency services. Users must make additional arrangements to access emergency services.

- Q: Where can I find the GNU GPL license terms for the device?

A: The GNU GPL license terms are incorporated into the device firmware and can be accessed via the Web user interface or by visiting <http://www.grandstream.com/legal/opensource-software>.

The GSC3506 V2 is not pre-configured to support or make emergency calls to any type of hospital, law enforcement agency, medical care unit ("Emergency Service(s)") or any other kind of Emergency Service. You must make additional arrangements to access Emergency Services. It is your responsibility to purchase SIP-compliant Internet telephone service, properly configure the GSC3506 V2 to use that service, and periodically test your configuration to confirm that it works as you expect. It is also your responsibility to purchase traditional wireless or landline telephone services to access Emergency Services.

GRANDSTREAM DOES NOT PROVIDE CONNECTIONS TO EMERGENCY SERVICES VIA THE GSC3506 V2. NEITHER GRANDSTREAM NOR ITS OFFICES, EMPLOYEES OR AFFILIATES MAY BE HELD LIABLE FOR ANY CLAIM, DAMAGE, OR LOSS, AND YOU HEREBY WAIVE ANY AND ALL SUCH CLAIMS OR CAUSES OF ACTION ARISING FROM OR RELATING TO YOUR INABILITY TO USE THE GSC3506 V2 TO CONTACT EMERGENCY SERVICES, AND YOUR FAILURE TO MAKE ADDITIONAL ARRANGEMENTS TO ACCESS EMERGENCY SERVICES IN ACCORDANCE WITH THE IMMEDIATELY PRECEDING PARAGRAPH.

The GNU GPL license terms are incorporated into the device firmware and can be accessed via the Web user interface of the device at `my_device_ip/gpl_license`. It can also be accessed here:

<http://www.grandstream.com/legal/open-source-software>.

To obtain a CD with GPL source code information please submit a written request to [info@grandstream.com](mailto:info@grandstream.com)

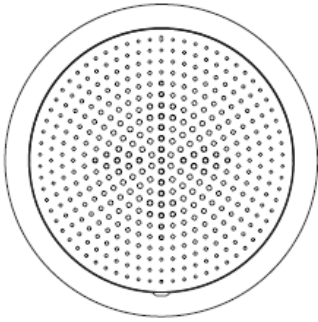
## OVERVIEW

The GSC3506 V2 is a 1-way public address SIP speaker that allows offices, schools, hospitals, apartments and more to build powerful public address announcement solutions that expand security and communication. This robust SIP speaker offers crystal clear HD audio functionality with a high-fidelity 30-Watt HD speaker. The GSC3506 V2 support built-in whitelists ,blacklists and greylists to easily block unwanted calls, SIP and multicast paging, group paging and PTT. users can easily sculpt a state-of-the-art security and PA announcement solution. Thanks to its modern industrial design and rich features, the GSC3506 V2 is the ideal SIP speaker for any setting

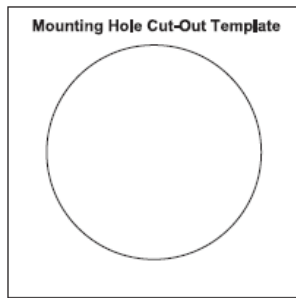
## PRECAUTIONS

- Do not attempt to open, disassemble, or modify the device.
- Do not expose this device to temperatures outside range of 0 °C to 45 °C in operation and -10 °C to 60 °C in storage.
- Do not expose the GSC3506 V2 to environments outside of the following humidity range: 10-90% RH (non-condensing).
- Do not power cycle your GSC3506 V2 during system boot up or firmware upgrade. You may corrupt firmware images and cause the unit to malfunction.

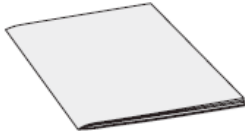
## PACKAGE CONTENTS



1x GSC3506 V2

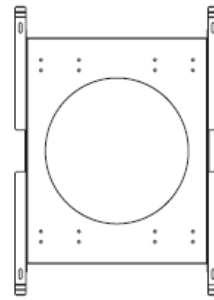


Mounting Hole Cut-Out  
Template



1x Quick Installation  
Guide

### Ceiling Mount Kit (optional and sold separately)

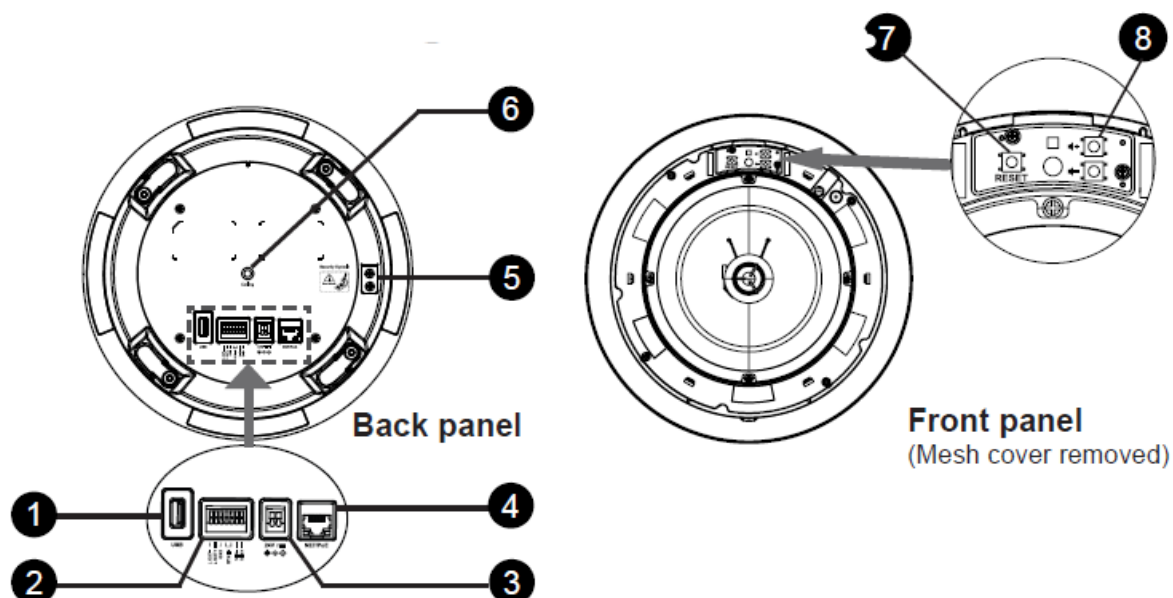



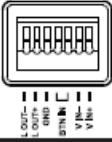





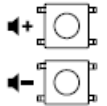
1x Ceiling Bracket



8x Screws  
(M4)

## GSC3506 V2 PORTS AND BUTTONS



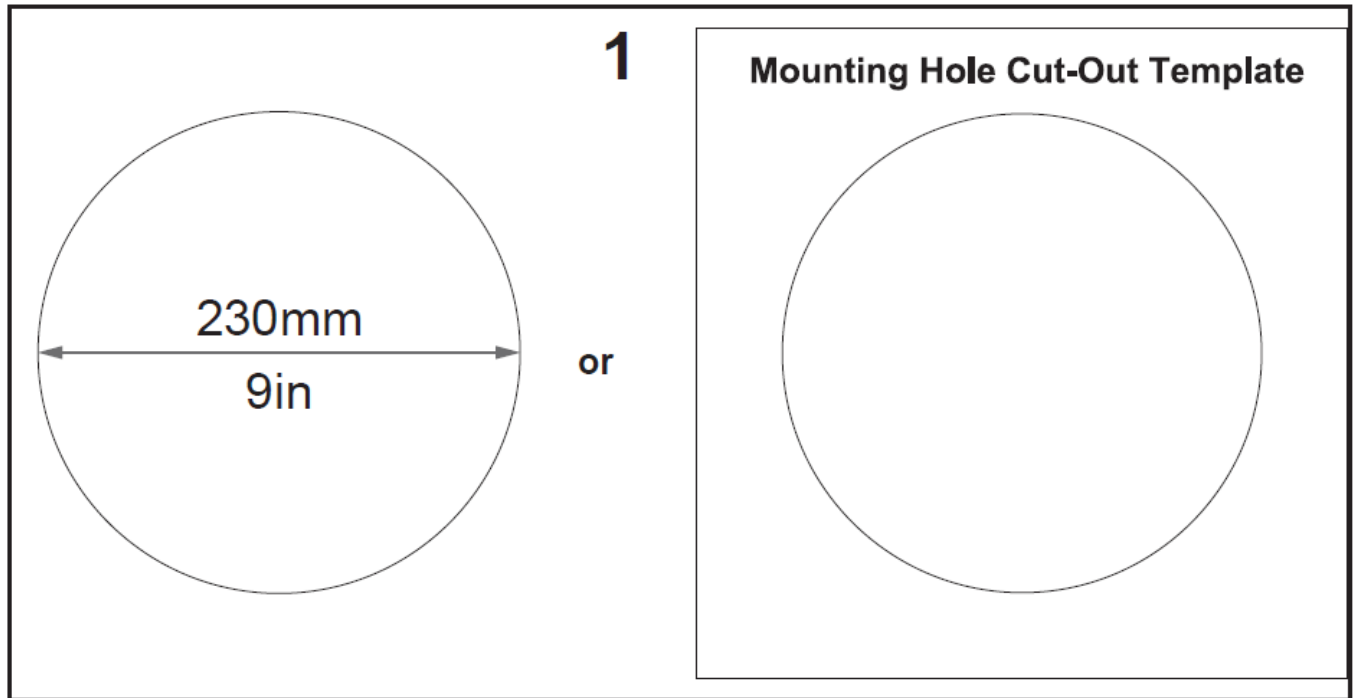
NO.	Port	Label	Description
1		USB Port	USB2.0, External USB Storage
2		Auxiliary Ports	2-pin Switch-in input port /2-pin Alarm-in input port /2-pin differential line out port /1-pin GND port
3		DC24V-port	One DC24V port
4		NET/PoE	Ethernet RJ45 port (10/100Mbps) supporting PoE/PoE+/PoE++.
5		Security Eyebolt	Security Eyebolt (Must Attach).
6		Ceiling hole	Ceiling hole position.
7		Reset	Factory reset button. Press for 10 seconds to reset factory default settings.
8		Volume	Sound Volume buttons.

## HARDWARE INSTALLATION

GSC3506 V2 can be mounted on the ceiling, boom or using ceiling bracket. Please refer to the following steps for the appropriate installation.

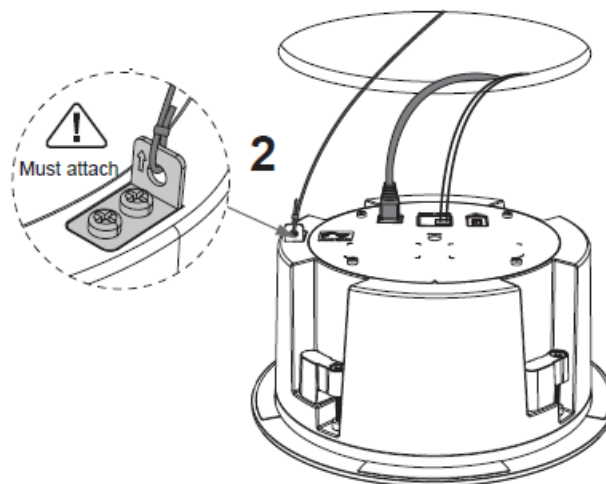
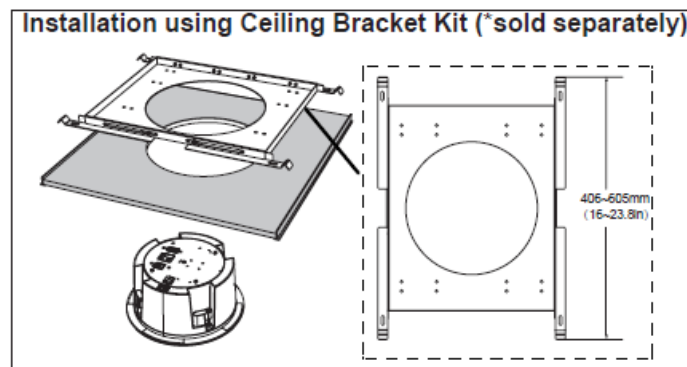
**Note:** The recommended method of mounting is the ceiling mount, since it does not require any additional equipment for installation, use ceiling bracket mounting only when the ceiling material is thin and cannot withstand the weight of GSC3506 V2.

## Ceiling Mount



### Installation using Ceiling Bracket Kit (\*sold separately)

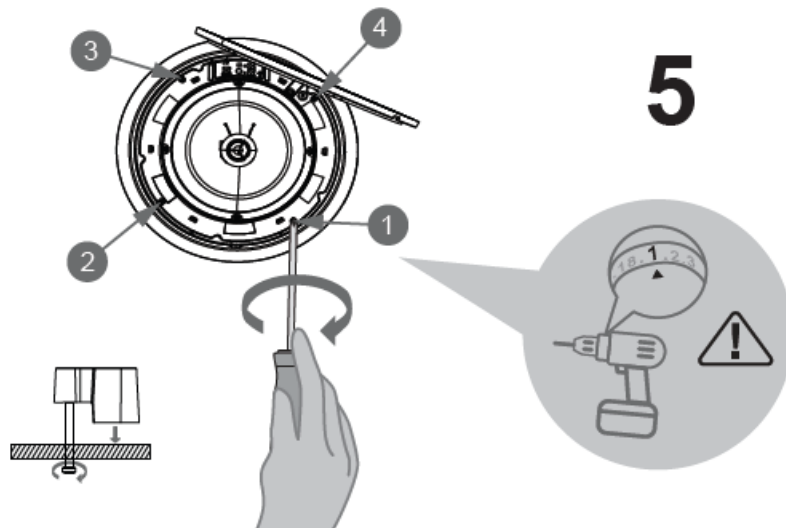
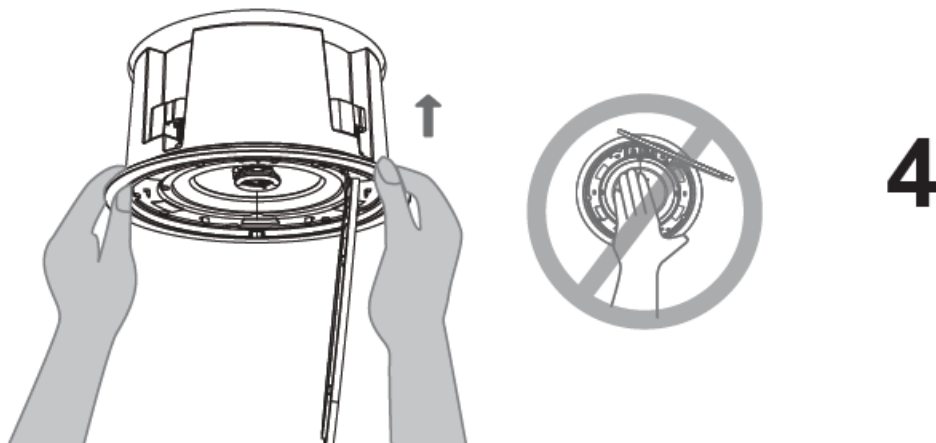
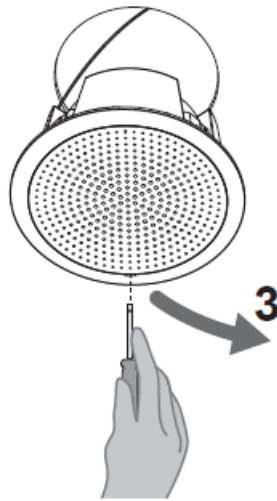
Then Fix the Ceiling Bracket using the screws from the kit as shown in the illustration (optional)



1. Drill a round hole with a diameter of 230mm or use the Mounting Hole Cut-Out Template.
2. To ensure safety, install first the anti-fall ropes, then plug in the Ethernet and 2-pincables

**Note:** The anti-fall rope diameter must be less than 5mm, and the pulling force must be greater than 25kgf.

3. Open the front cover with a flat-head screwdriver.
4. Align the device with the hole and push up slowly with two hands



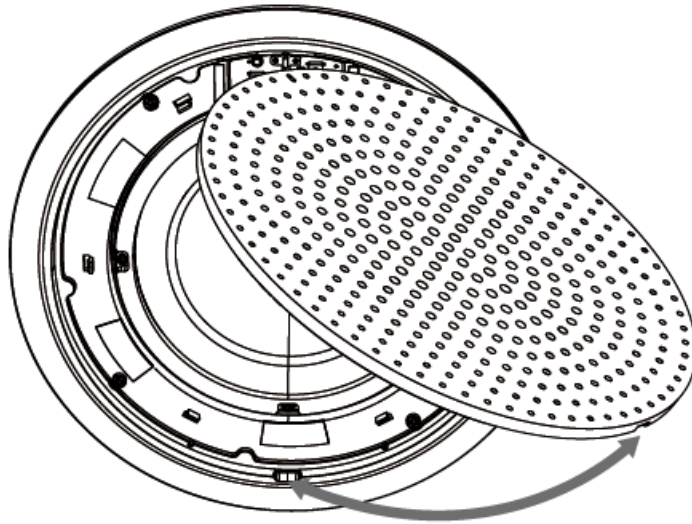
**Warning:** Avoid pressing the horn with your hands.

5. Use a screwdriver and gently rotate clockwise the screws marked as (1), (2), (3) and (4) in the step 5 illustration

**Warning:** If you use an electric drill, make sure to adjust it to the minimum speed gear first.

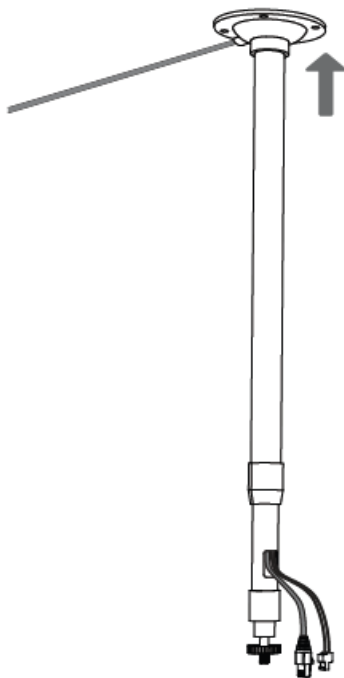
6. Align the notch on the front cover with the notch on the device, press the whole front cover to ensure that each buckle is fastened.

6



## Boom Mount

1. Fix the Boom in the ceiling.



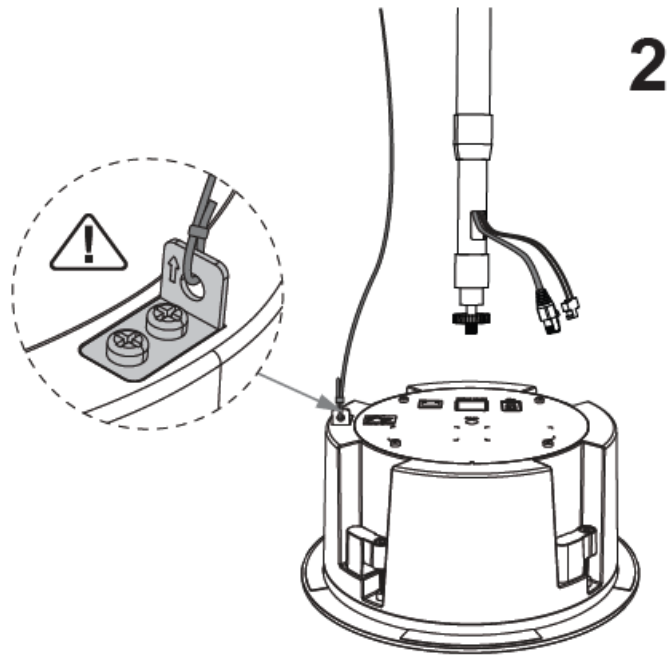
1/4 20UNC thread screw boom (not provided)

1

2. To ensure safety, install first the anti-fall ropes

**Note:** The anti-fall rope diameter must be less than 5mm, and the pulling force must be greater than 25kgf

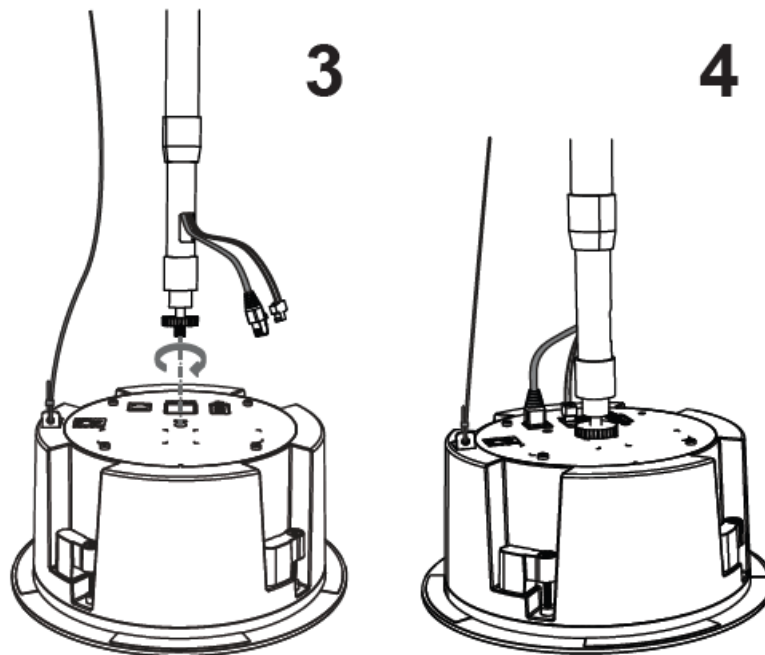




3. Attach the Boom with GSC3506 V2 ceiling hole and rotate to fix it in place.

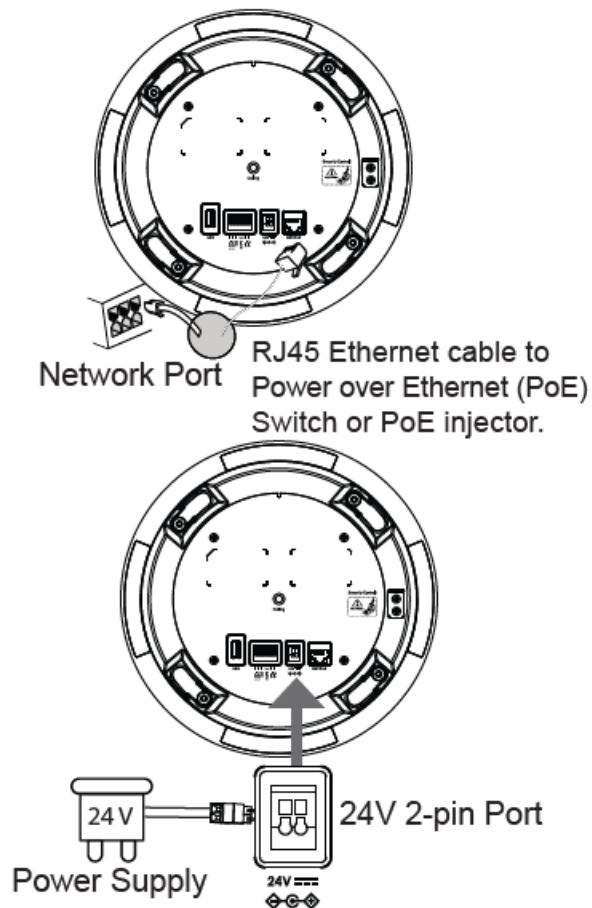
4. Plug in the Ethernet and 2-Pin 24V Power supply cab

**Note:** When connecting to a PoE/PoE+/PoE++ switch, the 2-Pin 24V Power Supply cable connection becomes unnecessary.



## POWERING AND CONNECTING GSC3506 V2

GSC3506 V2 can be powered on using PoE/PoE+/ PoE++ switch or connecting the 2-Pin 24V Power Supply cable.



### Using PoE Switch

- Step 1: Plug a RJ45 Ethernet cable into the network port of the GSC3506 V2.
- Step 2: Plug the other end into the power over Ethernet (PoE++) switch or PoE injector

**Note:** It is recommended to use PoE++ power supply to achieve the best audio effect.

### Using 2-Pin 24V Power Supply cable

- Step 1: Connect a 24V Power Supply.
- Step 2: Connect the 24V Power Supply cable with the 24V 2-pin Port (as shown in the illustration on the right).

**Note:** To connect GSC3506 V2 to the local network, RJ45 Ethernet cable needs to be connected too

## ACCESSING THE CONFIGURATION INTERFACE

A computer connected to the same network as the GSC3506 V2 can discover and access its configuration interface using its MAC address :

1. Locate the MAC address on the MAC tag of the unit, which is on the underside of the device, or on the package.
2. From a computer connected to same network as the GSC3506 V2, type in the following address using the GSC3506 V2's MAC address on your browser: [http://gsc\\_<mac>.local](http://gsc_<mac>.local)

**Example:** if a GSC3506 V2 has the MAC address C0:74:AD:11:22:33, this unit can be accessed by typing [http://gsc\\_c074ad112233.local](http://gsc_c074ad112233.local) on the browser



For more information, please refer to GSC3506 V2 User Manual at: <https://www.grandstream.com/support>

Grandstream Networks, Inc. 126 Brookline Ave, 3rd Floor Boston, MA 02215. USA


**Tel :** +1 (617) 566 – 9300

**Fax:** +1 (617) 249 – 1987

[www.grandstream.com](http://www.grandstream.com)

For Certification, Warranty and RMA information, please visit [www.grandstream.com](http://www.grandstream.com)

## Documents / Resources

	<a href="#">GRANDSTREAM GSC3506 V2 SIP Multicast Intercom Speaker</a> [pdf] Installation Guide GSC3506 V2 SIP Multicast Intercom Speaker, GSC3506 V2, SIP Multicast Intercom Speaker, M ulticast Intercom Speaker, Intercom Speaker, Speaker
--	--

## References

- [Grandstream Networks - Networking & Unified Communications](#)
- [Support- Grandstream Networks](#)
- [User Manual](#)

### Manuals+, Privacy Policy

This website is an independent publication and is neither affiliated with nor endorsed by any of the trademark owners. The "Bluetooth®" word mark and logos are registered trademarks owned by Bluetooth SIG, Inc. The "Wi-Fi®" word mark and logos are registered trademarks owned by the Wi-Fi Alliance. Any use of these marks on this website does not imply any affiliation with or endorsement.