



**GCC6010,
GCC6011 SMB
UC/Networking
Convergence
Wired Gateway**



GRANDSTREAM GCC6010, GCC6011 SMB UC/Networking Convergence Wired Gateway Installation Guide

[Home](#) » [GRANDSTREAM](#) » GRANDSTREAM GCC6010, GCC6011 SMB UC/Networking Convergence Wired Gateway Installation Guide 

Contents

- 1 GRANDSTREAM GCC6010, GCC6011 SMB UC/Networking Convergence Wired Gateway
- 2 PACKAGE CONTENT
- 3 GROUNDING THE DEVICE
- 4 FAQs
- 5 Documents / Resources
 - 5.1 References



GRANDSTREAM GCC6010, GCC6011 SMB UC/Networking Convergence Wired Gateway



- Grandstream Networks, Inc. 126 Brookline Ave, 3rd Floor, Boston, MA 02215. USA Tel: +1 (617) 566 – 9300
www.grandstream.com
- For Certification, Warranty and RMA information, please visit www.grandstream.com

PACKAGE CONTENT



GCC6011 SSD Installation

2x Screws

螺丝

Tornillos

Vis

Schrauben

Viti

Винта

Parafuso



1x Nut

螺帽

Tuerca

Ecrou

Muttern

Dado

Гайка

Porca



GCC6011



8x Screws



2x Mounting Bracket



1x 25 cm Ground Cable



4x Rubber Footpads

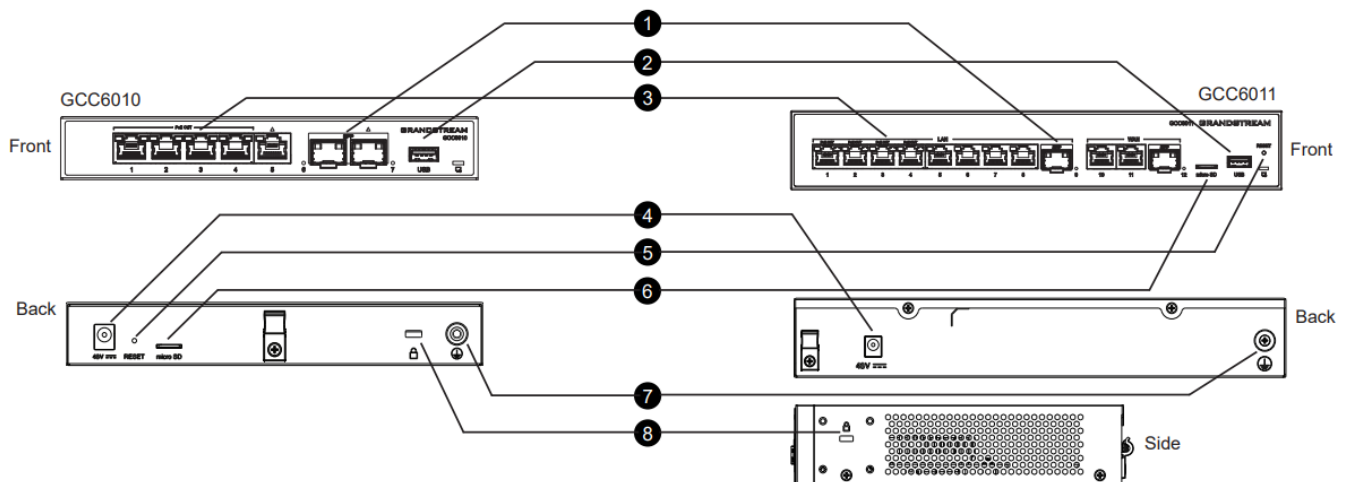


48V Power adapter



Quick Installation Guide

GCC6010/6011 PORTS

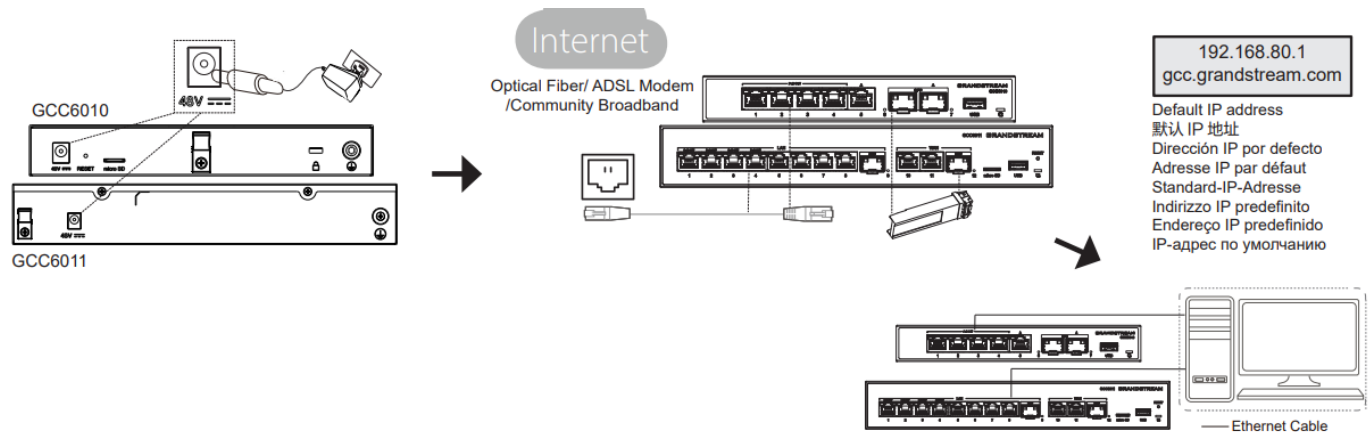


1. 2.5G SFP Port
2. USB 3.0 Port
3. Ethernet Port
4. DC48V
5. RESET
6. Micro SD

7. Grounding terminal
8. Kensington Lock

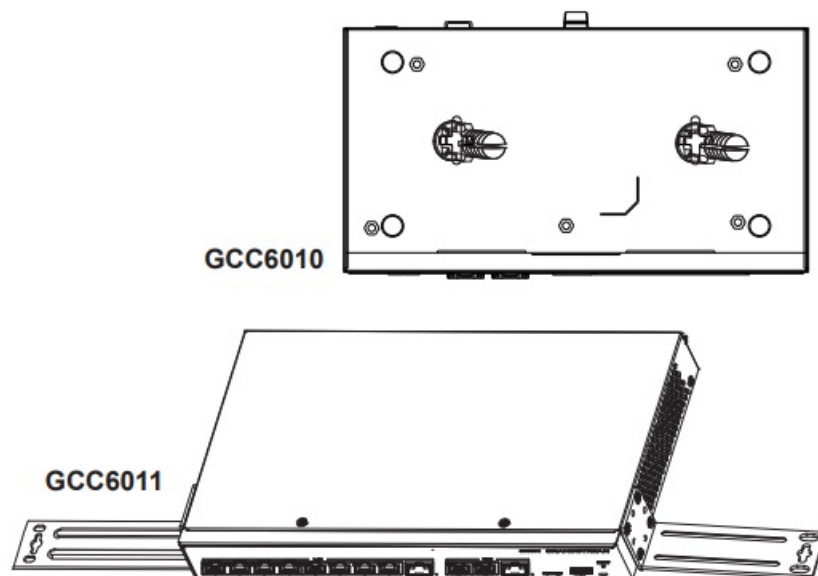
CONNECTING THE GCC6010/6011

- **GCC6010:** Ports with this symbol are configured to be used as a WAN port by default at the factory.

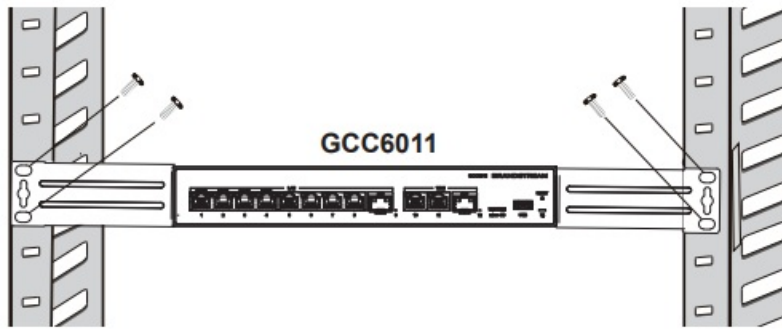


- The default password information is printed on the MAC label on the bottom of the unit. The default username is “admin”.

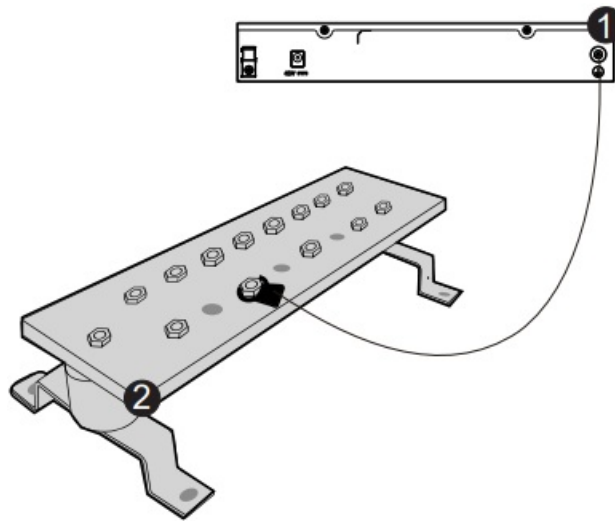
MOUNTING GCC6010/6011 TO THE WALL



INSTALL ON A 19” STANDARD RACK (GCC6011)

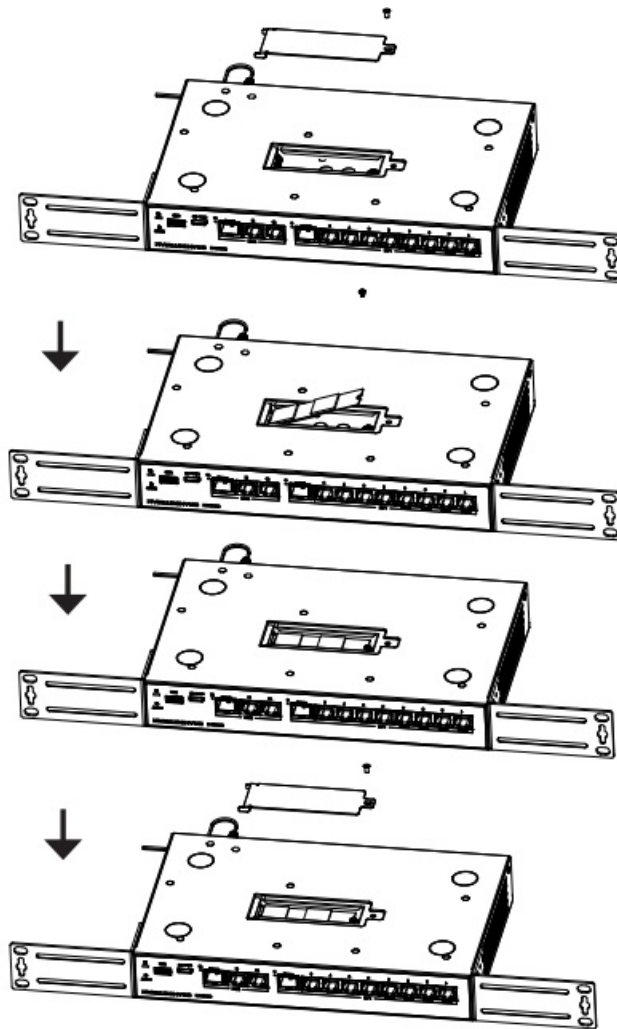


GROUNDING THE DEVICE



1. Ground Terminal
2. Ground Bar

SSD INSTALLATION (GCC6011)



The GCC6010/GCC6011 is not pre-configured to support or make emergency calls to any type of hospital, law enforcement agency, medical care unit ("Emergency Service(s)"), or any other kind of Emergency Service. You must make additional arrangements to access Emergency Services. It is your responsibility to purchase SIP-compliant Internet telephone service, properly configure the GCC6010/ GCC6011 to use that service, and periodically test your configuration to confirm that it works as you expect. It is also your responsibility to purchase traditional wireless or landline telephone services to access Emergency Services.

GRANDSTREAM DOES NOT PROVIDE CONNECTIONS TO EMERGENCY SERVICES VIA THE GCC6010/GCC6011. NEITHER GRANDSTREAM NOR ITS OFFICES, EMPLOYEES OR AFFILIATES MAY BE HELD LIABLE FOR ANY CLAIM, DAMAGE, OR LOSS, AND YOU HEREBY WAIVE ANY AND ALL SUCH CLAIMS OR CAUSES OF ACTION ARISING FROM OR RELATING TO YOUR INABILITY TO USE THE GCC6010/GCC6011 TO CONTACT EMERGENCY SERVICES, AND YOUR FAILURE TO MAKE ADDITIONAL ARRANGEMENTS TO ACCESS EMERGENCY SERVICES IN ACCORDANCE WITH THE IMMEDIATELY PRECEDING PARAGRAPH.

The GNU GPL license terms are incorporated into the device firmware and can be accessed via the Web user interface of the device at `my_device_ip/gpl_license`. It can also be accessed here: <https://www.grandstream.com/legal/open-source-software>. To obtain a CD with GPL source code information, please submit a written request to info@grandstream.com

FAQs

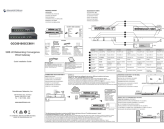
Can the GCC6010/GCC6011 be used to contact emergency services?

No, Grandstream does not provide connections to emergency services via the GCC6010/GCC6011. Users are advised to make alternative arrangements for accessing emergency services.

How can I access the GNU GPL license terms for the device?

The GNU GPL license terms are accessible via the Web user interface of the device at my_device_ip/gpl_license. Alternatively, you can visit Grandstream's website or request a CD with GPL source code information by emailing info@grandstream.com.

Documents / Resources

	GRANDSTREAM GCC6010, GCC6011 SMB UC/Networking Convergence Wired Gateway [pdf] Installation Guide GCC6010, GCC6011, GCC6010 GCC6011 SMB UC Networking Convergence Wired Gateway, GCC6010 GCC6011, SMB UC Networking Convergence Wired Gateway, Networking Convergence Wired Gateway, Convergence Wired Gateway, Wired Gateway, Gateway
---	---

References

-  [Grandstream Networks - Networking & Unified Communications](#)
- [User Manual](#)

[Manuals+](#), [Privacy Policy](#)

This website is an independent publication and is neither affiliated with nor endorsed by any of the trademark owners. The "Bluetooth®" word mark and logos are registered trademarks owned by Bluetooth SIG, Inc. The "Wi-Fi®" word mark and logos are registered trademarks owned by the Wi-Fi Alliance. Any use of these marks on this website does not imply any affiliation with or endorsement.