

  
GRACO R129 Booster  
Basic



# GRACO R129 Booster Basic Instruction Manual

[Home](#) » [Graco](#) » GRACO R129 Booster Basic Instruction Manual 

## Contents

- [1 GRACO R129 Booster Basic](#)
- [2 Description](#)
- [3 Product Information](#)
- [4 Care and Maintenance](#)
- [5 Documents / Resources](#)
  - [5.1 References](#)
- [6 Related Posts](#)

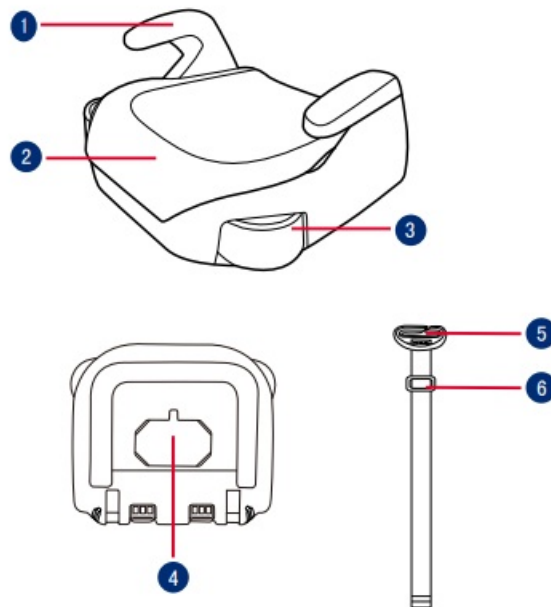


## GRACO R129 Booster Basic



## Description

1. Armrest
2. Base
3. Cupholders
4. Instruction Manual Storage
5. Shoulder Belt Positioning Clip
6. Shoulder Harness Anchor



## IMPORTANT

READ THESE INSTRUCTIONS CAREFULLY BEFORE USE AND KEEP THEM FOR FUTURE REFERENCE. YOUR CHILD'S SAFETY MAY BE AFFECTED IF YOU DO NOT FOLLOW THESE INSTRUCTIONS.

## WARNING

- IMPORTANT, RETAIN FOR FUTURE REFERENCE: READ CAREFULLY.
- NO booster can guarantee full protection from injury in an accident. However proper use of this booster will reduce the risk of serious injury or death to your child.
- Always take care to follow the installation instructions correctly, this will ensure the booster performs at an optimum safety level.
- Do take care so that the rigid items and plastic parts of an booster shall be so located and installed that they are not liable to become trapped by a moveable seat or in a door of the vehicle.
- To use this booster seat according to the ECE R129/03, your child must meet the following requirements.
- Child height 135cm-150cm (reference age: 7-12 years). Forward facing only (in vehicle travel direction)
- The booster seat should be replaced if it has been subjected to heavy loads in the event of an accident or if it has been dropped.
- This booster seat is only intended to be used in the car.
- Do not make any alterations or additions to the booster seat without approval from the type approval authority. Failure to do so may result in serious safety issues.
- DO NOT use the seat if the surfaces are too hot from sunlight.

- Never leave the child unattended in the booster seat or vehicle, not even for a few minutes.
- Any luggage or other objects liable to cause injuries in the event of a collision shall be properly secured.
- The booster shall not be used without the soft goods.
- The booster soft goods should not be replaced with any other than the one recommended by the manufacturer, because the soft goods constitutes an integral part of the restraint performance.
- Always secure child in booster, even on short trips, as this is when most accidents occur. DO NOT leave this booster, or other items unbelted or unsecured in your vehicle. Remove the booster seat from the car if not regular used and store in a dry, sun-protected surrounding.
- It's recommended not to use a second-hand booster seat whose history is not known. It may have invisible structural damages or defects due to incorrect usage/storage.
- DO NOT use any load bearing contact points other than those described in the instructions and marked on the booster.

**DO NOT install this booster under the following conditions:**

1. Vehicle seats facing sideways or rearward with respect to the vehicle's direction of travel.
2. Vehicle seats movable during installation.

Consult the retailer for issues concerning maintenance repair and part replacement.

To avoid burns, never put hot liquids in your booster's cupholders.

**Product Information**

1. This is a Universal booster cushion Enhanced Child Restraint System, It is approved according to UN Regulation No.129, for use in i-Size compatible and universal vehicle seating positions as indicated by vehicle manufacturers in the vehicle user's manual.
2. If in doubt, consult the Enhanced Child Restraint System manufacturer or the retailer.

- Product Booster seat
- Materials Plastics, Metal, Fabrics
- Patent No. Patents pending
- Suitable for Child height 135cm-150cm (Reference age 7-12 years)
- Installation Forward facing (in vehicle travel direction)

**Concerns on Installation**

**See images 1 – 3**

**Installation with 3-point-belt**

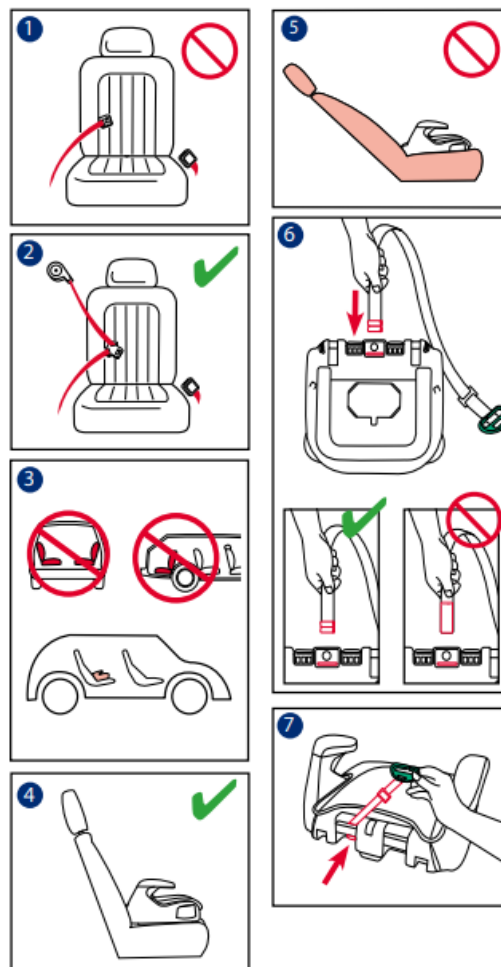
**See images 4 – 10 6**

- Insert the end of shoulder belt positioning clip webbing into the hole on the base.
- Please check the direction of shoulder harness anchor as 10 to avoid hurting the child's back if shoulder harness anchor is in the opposite direction.

- Pull the shoulder belt positioning clip webbing to make sure the webbing fixed on the base.
- 7 Thread the webbing and clip through the cross bar, then tension webbing.
- 8 Slide shoulder harness anchor to adjust webbing length.
- Place through the shoulder belt into the shoulder belt positioning clip, Slide the shoulder belt positioning clip to make sure the clip is close to child's shoulder, 9 -1 buckle the vehicle safety belt. 9 -3
- To achieve the safest installation, we suggest the shoulder belt positioning clip should be level with the highest point of the child's shoulder.

DO NOT position vehicle belt over top of the armrests. It must pass underneath the armrests. 9 -2

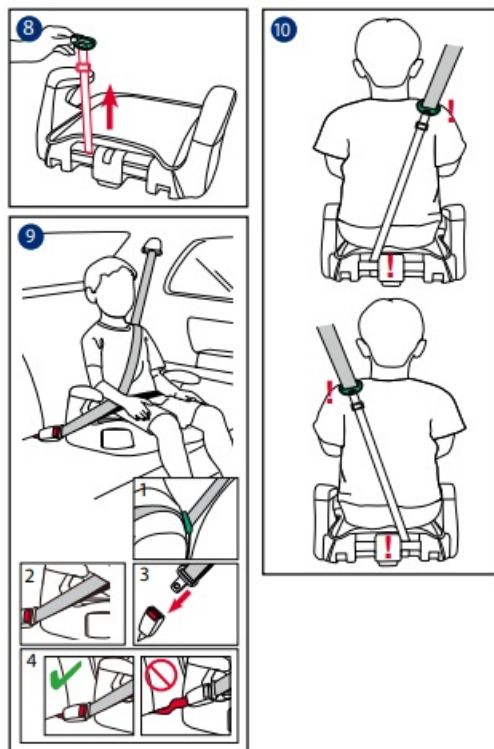
- The booster can not be used if the vehicle safety belt buckle (female buckle end) is too long to anchor the booster securely. 9 -4



- Place a booster firmly against the back of a forward-facing vehicle seat equipped with a lap/shoulder belt.
- After your child is placed in this booster, the safety belt must be used correctly, and ensure that any lap strap is worn low down, so that the pelvis is firmly engaged.
- Any straps holding the booster to the vehicle should be tight , any straps restraining the child should be adjusted to the child's body, and the straps should not be twisted.9

#### Rear view of child sitting in seat. 10

- The shoulder belt positioning clip must through the horizontal bar of the base farthest from where the vehicle shoulder belt lays across the child.
- Please store shoulder belt positioning clip on the bottom of base when don't use it.

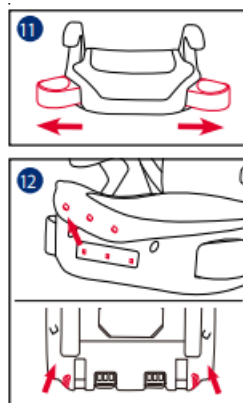


### Use Cupholders

See image 11

### Detach Soft Goods

See image 12



### Care and Maintenance

- Please wash the soft goods and inner padding with cold water under 30°C.
- Do not iron the soft goods.
- Do not bleach or dry clean the soft goods.
- Do not use undiluted neutral detergent gasoline or other organic solvent to wash the booster. It may cause damage to the booster.
- Do not twist the soft goods and inner padding to dry with great force. It may leave the soft goods and inner padding with wrinkles.
- Please hang dry the soft goods and inner padding in the shade.
- Please remove the booster from the vehicle seat if not in use for a long period of time. Put the booster in a cool, dry place and somewhere your child cannot access it. [gracobaby.eu](http://gracobaby.eu) [www.gracobaby.pl](http://www.gracobaby.pl)

**Allison Baby UK Ltd**

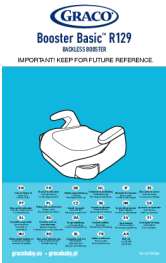
Venture Point, Towers Business Park Rugeley, Staffordshire, WS15 1UZ

## Customer Service

[gracobaby.eu](http://gracobaby.eu)

[www.gracobaby.pl](http://www.gracobaby.pl)

## Documents / Resources

	<p><a href="#">GRACO R129 Booster Basic</a> [pdf] Instruction Manual R129 Booster Basic, R129, Booster Basic, Basic</p>
---	---

## References

- [User Manual](#)

### Manuals+, Privacy Policy

This website is an independent publication and is neither affiliated with nor endorsed by any of the trademark owners. The "Bluetooth®" word mark and logos are registered trademarks owned by Bluetooth SIG, Inc. The "Wi-Fi®" word mark and logos are registered trademarks owned by the Wi-Fi Alliance. Any use of these marks on this website does not imply any affiliation with or endorsement.