




GRACO GRCOM-201-A Baby Monitor User Manual

[Home](#) » [Graco](#) » GRACO GRCOM-201-A Baby Monitor User Manual 

*GRACO GRCOM-201-A Baby Monitor
User Manual*



VIDEO BABY MONITOR



User's Manual
Item: GRCOM-201



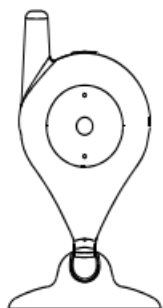
Contents

- [1 Introduction](#)
- [2 Package Contents](#)
- [3 Using the Baby Video Camera](#)
- [4 A Quick Look](#)
- [5 Using the Parent Monitor](#)
- [6 Adding Cameras](#)
- [7 Camera and Monitor Alerts](#)
- [8 FCC Statement](#)
- [9 Sakar One Year Warranty](#)
- [10 Documents / Resources](#)
- [11 Related Posts](#)

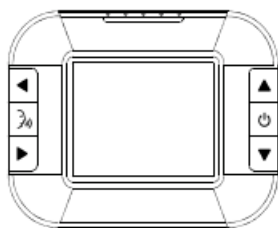
Introduction

Thank you for purchasing the Graco Video Baby Monitors, item GRCOM-201. Designed with infrared night vision, parents/guardians have 24 hour visibility of their baby. Please read this manual carefully before setting up and using the video camera and monitor. And for future reference, these keep this manual in a secure location.

Package Contents



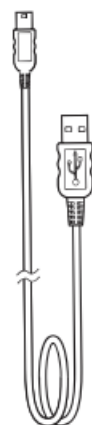
1 Baby Camera



1 Parent Monitor



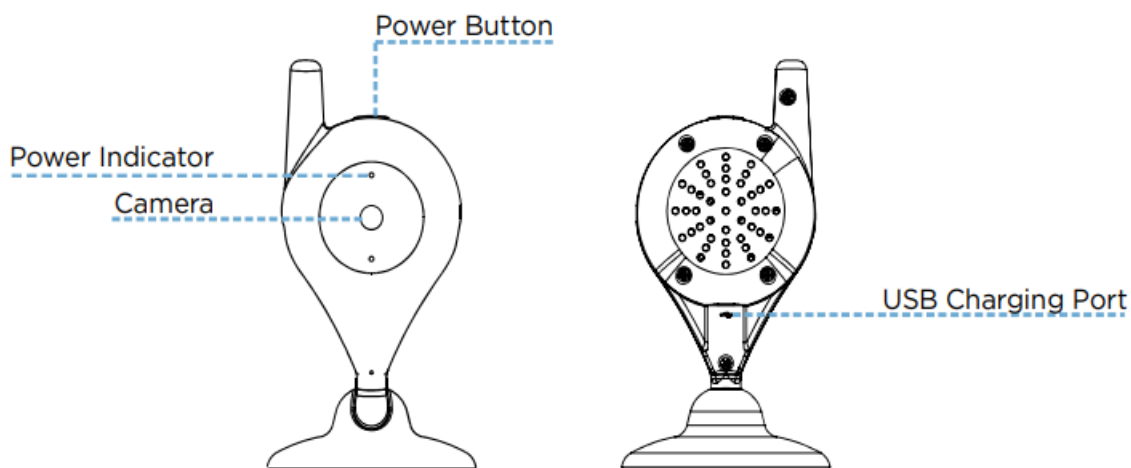
1 AC Adapter



2 USB Charging Cables

WARNING: Keep all contents out of reach from children and infants as this can lead to choking or strangulation.

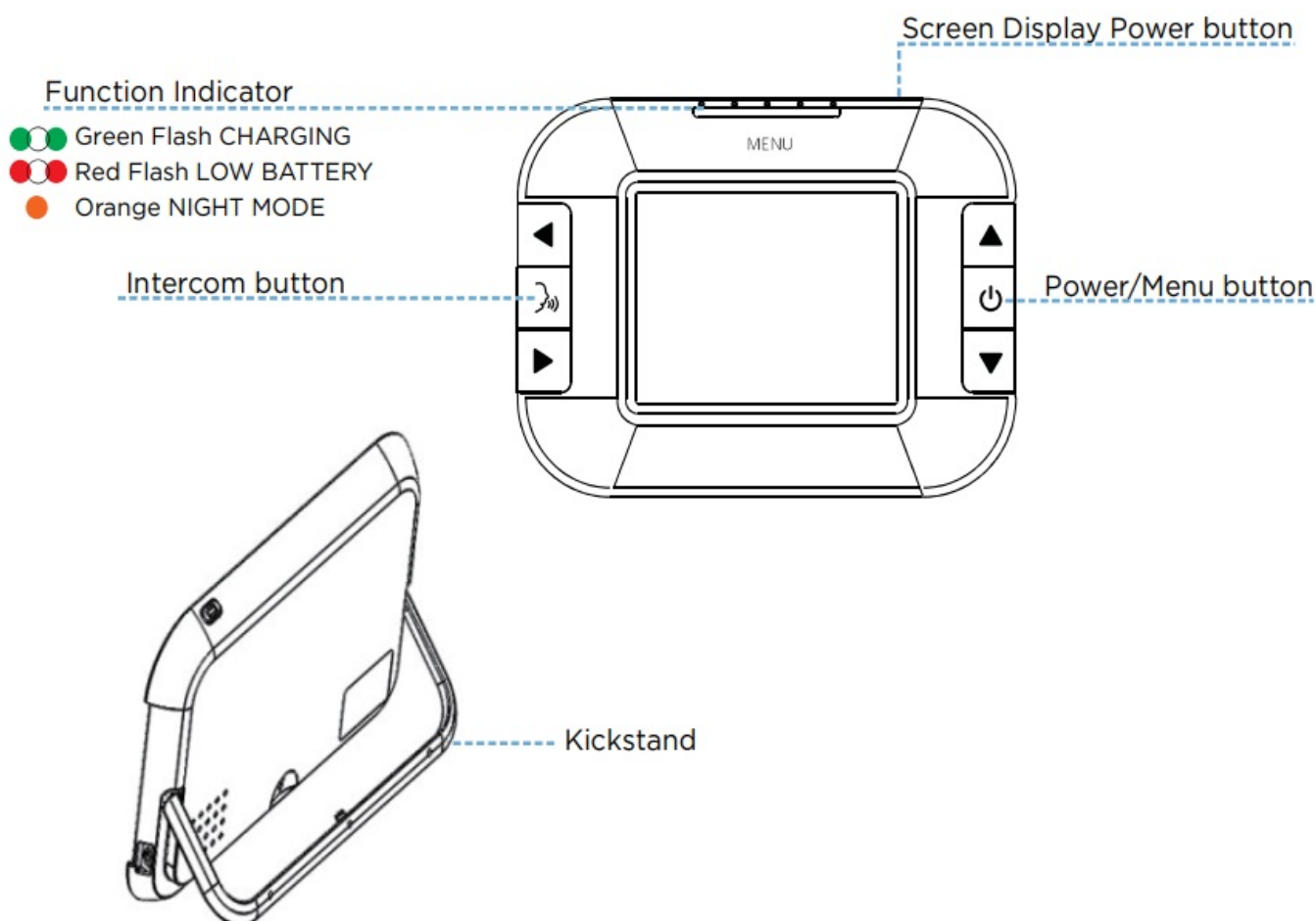
Using the Baby Video Camera



Powering On: Using the included USB cable, connect the cable's USB end into the included wall adapter and the cable's Micro USB end into the video camera's Micro USB port. The LED Indicator will illuminate green indicating the power is ON.

Press and hold the Power button for 2-3 seconds to turn the camera ON/OFF.

A Quick Look



Using the Parent Monitor

Charging the monitor: Using the included Micro USB cable, connect the cable's USB end into the wall adapter

and the cable's Micro USB end into the port on the monitor.

Monitor Controls:

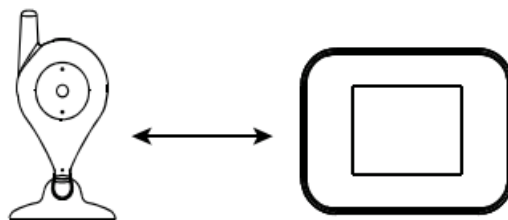
1. Press and hold the Power button to turn the monitor ON/OFF. Press the button to enter the main
2. Press the Display Screen button to turn the screen ON/OFF. Press the button to change from Fahrenheit to
3. Use the four arrows buttons to navigate through the

Adding Cameras

Up to four cameras can be connected to the parent monitor. Read the directions below to learn how to connect additional cameras to the parent monitor.

1. Select the Camera icon on the menu on the parent
2. Use the arrow buttons to select any unoccupied camera from number 1-4, then power the on the baby camera, release the parent monitor's power button.
3. Press and hold the power button on the baby camera. The LED Indicator will rapidly flash.
4. Press and hold the power button on the parent monitor. When the LED indicator stops flashing on the baby camera, release the parent monitor's power button.

Camera and Monitor Alerts



Distance: When the video monitors are out of range from one another, the parent monitor will beep every 30 seconds and its Battery Indicator will flash red and green.

Battery: When the parent monitor has low battery Indicator will flash red and the monitor will beep every 30 seconds.

Notes

FCC Statement

Changes or modifications not expressly approved by the party responsible for compliance could void the user's

authority to operate the equipment.

This device complies with Part 15 of the FCC Rules. Operation is subject to the following two conditions: (1) this device may not cause harmful interference, and (2) this device must accept any interference received, including interference that may cause undesired operation.

This equipment has been tested and found to comply with the limits for a Class B digital device, pursuant to Part 15 of the FCC Rules. These limits are designed to provide reasonable protection against harmful interference in a residential installation. This equipment generates, uses and can radiate radio frequency energy and, if not installed and used in accordance with the instructions, may cause harmful interference to radio communications. However, there is no guarantee that interference will not occur in a particular installation.

If this equipment does cause harmful interference to radio or television reception, which can be determined by following measures:

- Reorient or relocate the receiving antenna.
- Increase the separation between the equipment and receiver.
- Increase the separation between the equipment and receiver.
- Consult the dealer or an experienced radio/TV technician for help.

Sakar One Year Warranty

This warranty covers the original consumer purchaser only and is not transferable.

This warranty covers products that fail to function properly UNDER NORMAL USAGE, due to defects in material or workmanship. Your product will be repaired or replaced at no charge for parts or labor for a period of one year.

Damages or malfunctions not resulting from defects in material or workmanship and damages or malfunctions accident.


To Obtain Warranty Service and Troubleshooting Information:

Call 1-877-397-8200 or visit our website at www.sakar.com.

To receive Warranty service along with the name and address of an authorized product service center, the original consumer purchaser must contact us for problem determination and service procedures. Proof of purchase in the form of a bill of sale or receipted invoice, evidencing that the product is within the applicable Warranty period(s), MUST be presented in order to obtain the requested service. It is your responsibility to properly package and send any defective products along with a dated copy of proof of purchase, a written explanation of the problem, and a valid return address to the authorized service center at your expense. Do not include any other items or accessories with the defective product. Any products received by the authorized service center that are not covered by warranty will be returned unrepaid.



Documents / Resources

	<p>GRACO GRCOM-201-A Baby Monitor [pdf] User Manual</p> <p>GRCOM-201-B, GRCOM201B, RS5-GRCOM-201-B, RS5GRCOM201B, GRCOM-201-A, GRCOM201A, RS5-GRCOM-201-A, RS5GRCOM201A, GRCOM-201-A Baby Monitor, GRCOM-201-A, Baby Monitor</p>
---	--