



**DLX i-SIZE R129 Child
Restraint Keep for
future reference**



GRACO DLX i-SIZE R129 Child Restraint Keep for future reference User Guide

[Home](#) » [Graco](#) » GRACO DLX i-SIZE R129 Child Restraint Keep for future reference User Guide 

Contents

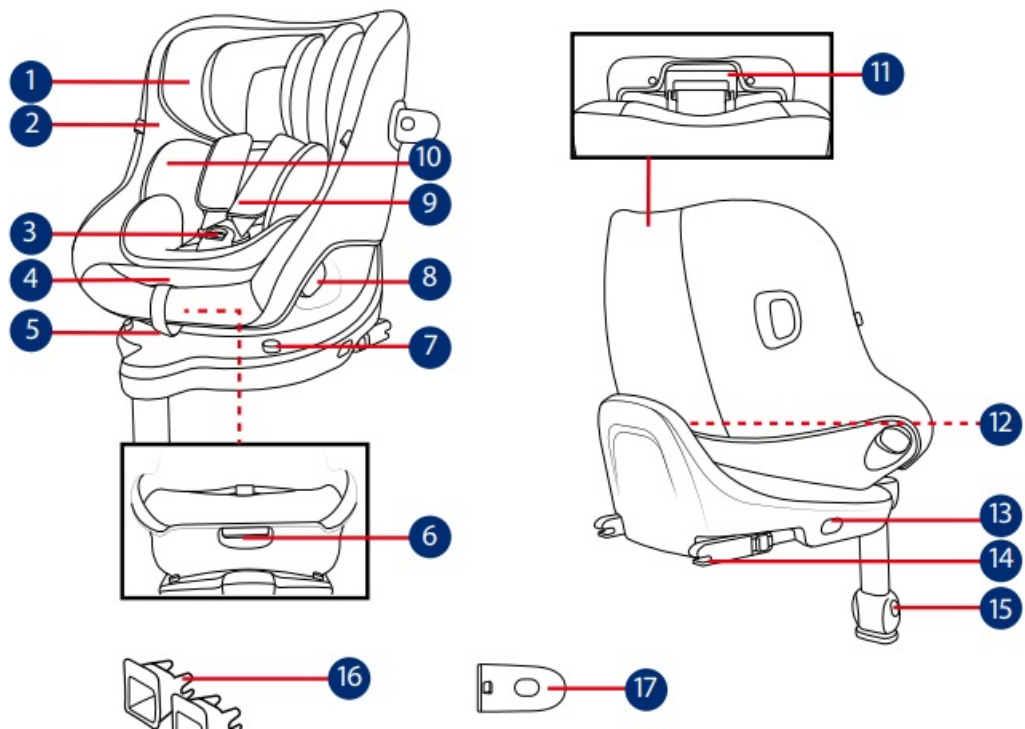
- [1 GRACO DLX i-SIZE R129 Child Restraint Keep for future reference](#)
- [2 Owner's Manual Parts List Fitting Guide](#)
- [3 Product Information](#)
- [4 Installation Concerns](#)
- [5 Care and Maintenance](#)
- [6 Documents / Resources](#)
 - [6.1 References](#)



GRACO DLX i-SIZE R129 Child Restraint Keep for future reference



Owner's Manual Parts List Fitting Guide



1. Head Support
2. Seat Pad
3. Buckle

4. Harness Adjustment Button
5. Adjustment Webbing Recline
6. Adjustment Button Swivel Lock-off
7. Rotation Button
8. Shoulder Harness Covers
9. Insert
10. Head Support Adjustment Lever
11. Instruction Manual Storage
12. ISOFIX Adjuster Button
13. ISOFIX Connector
14. Load Leg Adjustment Button
15. ISOFIX Attachments Guides
16. Side Impact Protection

*must use on door side only

IMPORTANT

READ THESE INSTRUCTIONS CAREFULLY BEFORE USE AND KEEP THEM FOR FUTURE REFERENCE. YOUR CHILD'S SAFETY MAY BE AFFECTED IF YOU DO NOT FOLLOW THESE INSTRUCTIONS.

WARNING: IMPORTANT, RETAIN FOR FUTURE REFERENCE: READ CAREFULLY.

- Be informed that the rigid items and plastic parts of an booster shall be so located and installed that they are not liable to become trapped by a moveable seat or in a door of the vehicle.
- DO NOT use the rearward facing enhanced child restraint systems in seating positions where there is an active frontal airbag installed.
- To use this enhanced child restraint according to the UN Regulation
- No.129/03, your child must meet the following requirements.
- Rear Facing Mode: Child height 40cm-105cm/ max. 21kg;
- Forward Facing Mode: Child height 76cm-105cm/ max. 21kg;
- IMPORTANT – DO NOT USE FORWARD FACING BEFORE THE CHILD'S AGE EXCEEDS 15 MONTHS (Refer to instructions).
- The enhanced child restraint may not fit in all approved vehicles due to storage compartments or limited space to the vehicle roof. In doubt, please contact your retailer or reach out to us.
- Any support-leg should be in contact with the vehicle floor, any straps restraining the child should be adjusted to the child's body, and straps should not be twisted.
- After your child is placed in this enhanced child restraint, the safety belt must be used correctly. Ensure that any lap strap is worn low down, so that the pelvis is firmly engaged, shall be stressed.
- This enhanced child restraint should be replaced when it has been subject to violent stresses in an accident. An accident can cause damage to it that you cannot see.
- Consider the danger of making any alterations or additions to the device without approval of the adequate authority, and the danger of not following closely to the installation instructions provided by the enhanced child restraint manufacturer.
- Please keep this enhanced child restraint away from sunlight, otherwise it may be too hot for child's skin.

Always touch the enhanced child restraint before placing child in it.

- DO NOT leave your child unattended in the enhanced child restraint system.
- Any luggage or other objects liable to cause injuries in the event of a collision shall be properly secured.
- The enhanced child restraint system shall NOT BE USED without the soft goods.
- The soft goods should not be replaced with any other than the one recommended by the manufacturer, because the soft goods constitutes an integral part of the restraint performance.
- Please check if this enhanced child restraint can be installed properly in your vehicle before you purchase it.
- NO enhanced child restraint can guarantee full protection from injury in an accident. However, proper use of this enhanced child restraint will reduce the risk of serious injury or death to your child.
- DO NOT install this enhanced child restraint without following the instructions in this manual or you may put your child at serious risk of injury or death.
- DO NOT use this enhanced child restraint if it has damaged or missing parts.
- DO NOT have your child in large/oversized clothes because this may prevent your child from being properly and securely fastened by the shoulder harness straps and the crotch strap between the legs.

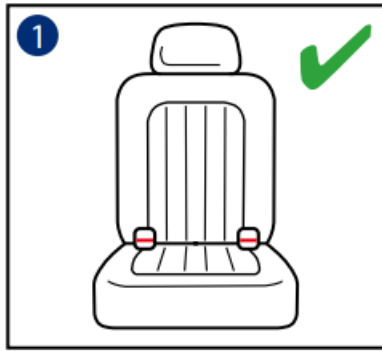
Product Information

1. This is an i-Size Enhanced Child Restraint System. It is approved according to UN Regulation No.129/03, for use in, i-Size compatible vehicle seating positions as indicated by vehicle manufacturers in the vehicle users' manual.
2. If in doubt, consult either the Enhanced Child Restraint System manufacturer or the retailer.

- Materials Plastics, Metal, Fabrics
- Patent No. Patents pending

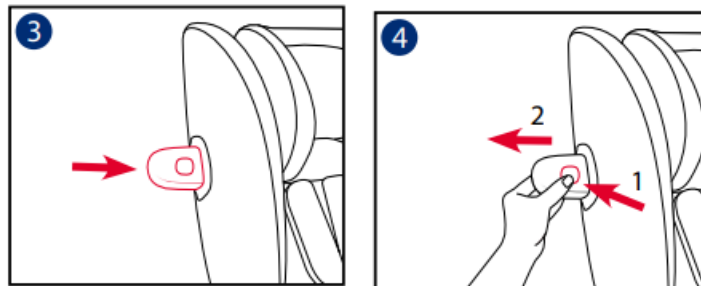
Installation Concerns

See images 1 – 2



Use Side Impact Protection

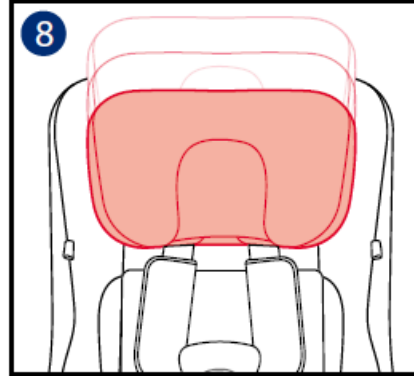
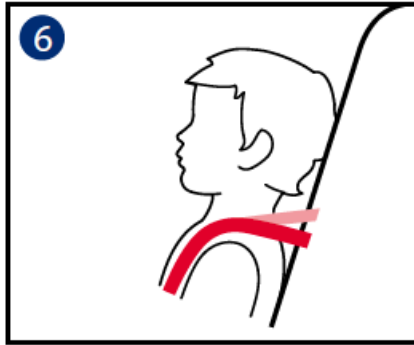
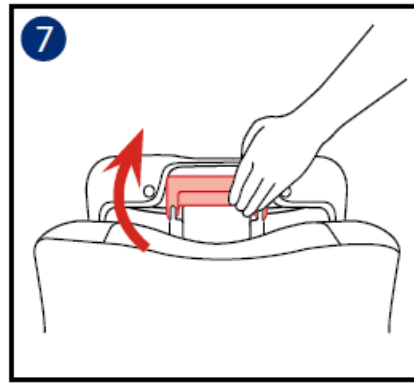
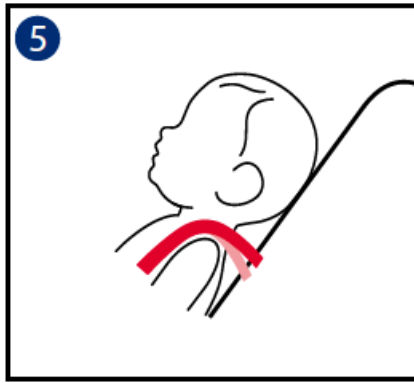
See images 3 – 4



1. The enhanced child restraint is delivered with removable side impact protection pod. Insert the side impact pod on the side closest to the door. Installation shown in 3 .
2. Press the release button to remove side impact protection.

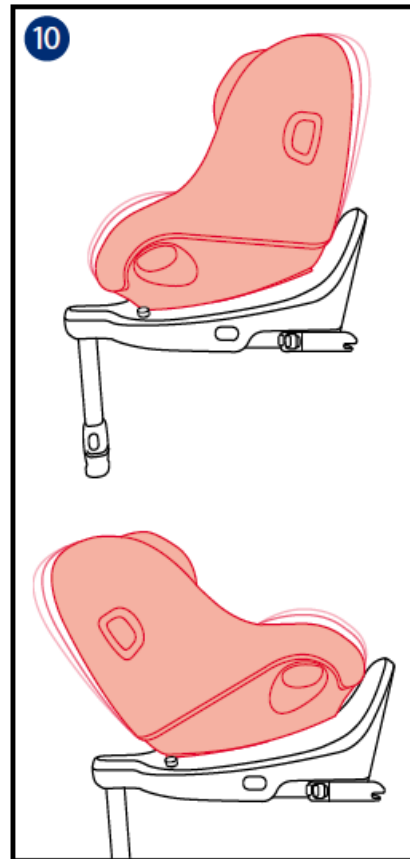
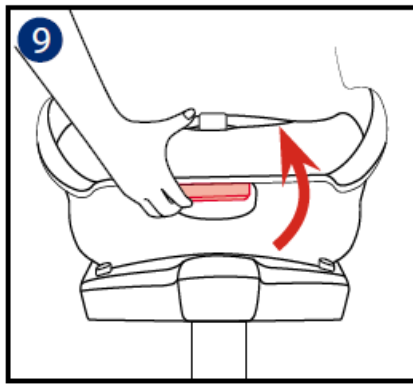
Height Adjustment for Head Support and Shoulder Harnesses

See images 5 – 8



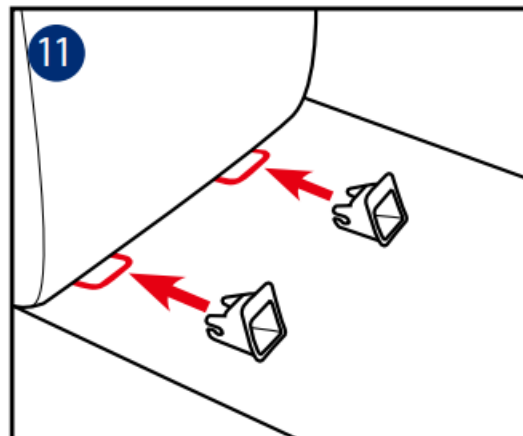
- Please adjust the head support and check if the shoulder harnesses are at the correct height according to 5 6 7 8 .
- When used in rear facing mode, the shoulder harness height must be even with or just below the top of child's shoulders. 5
- When used in forward facing mode, the shoulder harness height must be even with or just above the top of child's shoulders. 6
- Press the head support adjustment lever 7 and pull up or push down the head support until it clicks into one of the 6 positions, shown as 8 .

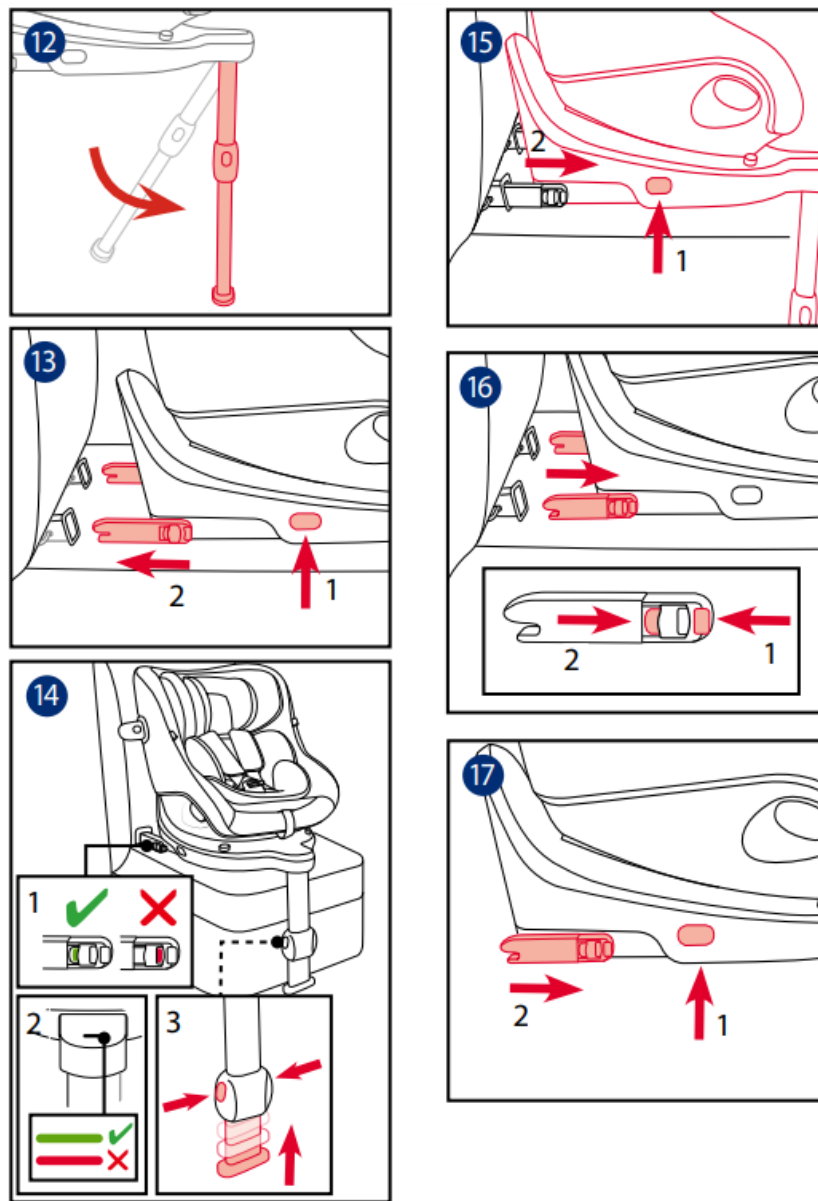
Recline Adjustment See images 9 – 10



- Press the recline adjustment button to adjust the enhanced child restraint to the desired position. 9 10
- There are 5 recline positions that can be used for both rear facing mode and forward facing mode. 10

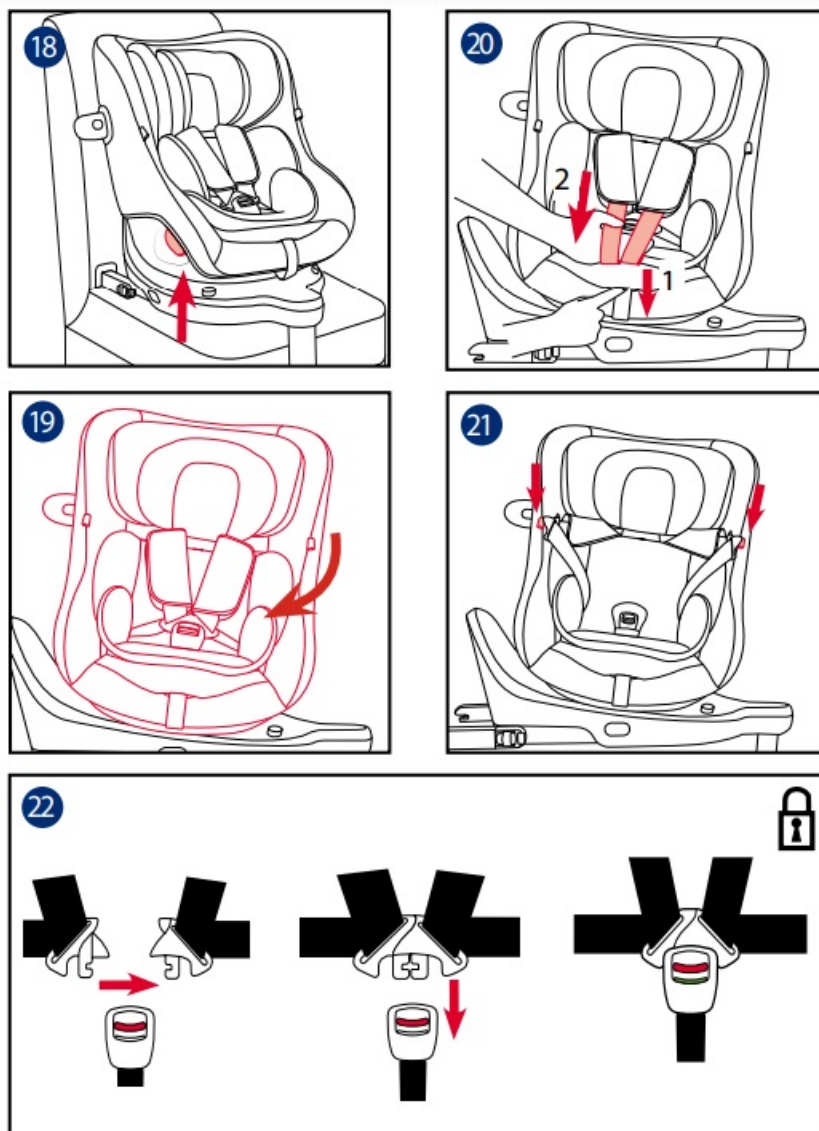
Base Installation See images 11 – 17

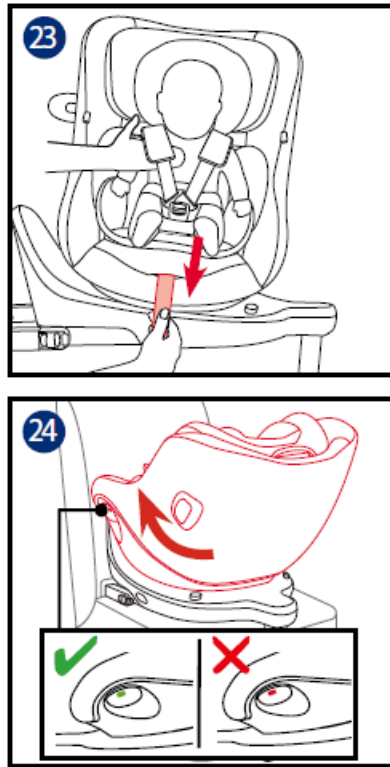




- Insert ISOFIX guides to assist with installation. 11
- Press the ISOFIX adjuster button to extend the ISOFIX. 13 -1& 13 -2
- Make sure that both ISOFIX connectors are securely attached to their ISOFIX anchor points. The colors of the indicators on both ISOFIX connectors should be completely green. 14 -1
- Press the ISOFIX adjustment buttons again while pushing the seat back until it comes in contact with the vehicle seat backrest.
- After attaching the ISOFIX, pull the load leg downward to floor. When the load leg indicator shows green, the load leg is installed correctly. 14 -2
- Squeeze the load leg releasing button, then adjust the load leg length. 14 -3
- Always make sure the support leg has direct contact with the floor and is in locked position even when the child is not in it. Always make sure the support leg has direct contact with the floor and is in locked position even when the child is not in it.
- To remove from the vehicle press the ISOFIX adjuster button and pull the base back from the seat. Then press and release the connectors from the vehicle's ISOFIX. 16
- To prevent damage during transit, press the ISOFIX adjuster button 17 -1 and fold the connector completely. 17

Using in the rear facing mode (Child height 40cm-105cm/Child weight 21kg/infant – approx. 4 years old)
See images 18 – 24



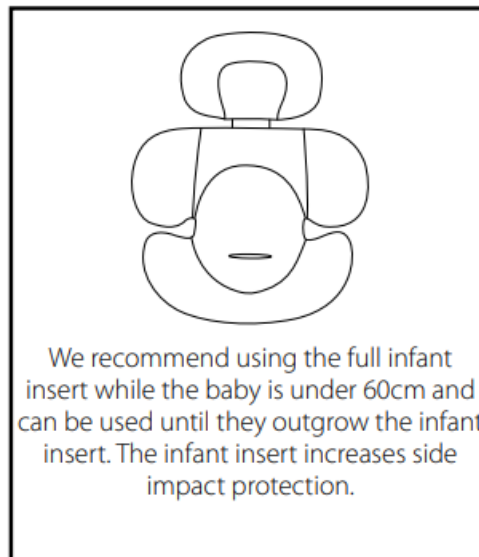


- Install the enhanced child restraint on the rear vehicle seat, and then place the child in the enhanced child restraint.
- Press the rotating button to rotate for easier side loading/unloading of the child, then rotate the seat to the rear facing position. 18 19
- Press the rotating button on either side to rotate the enhanced child restraint.

Securing Child

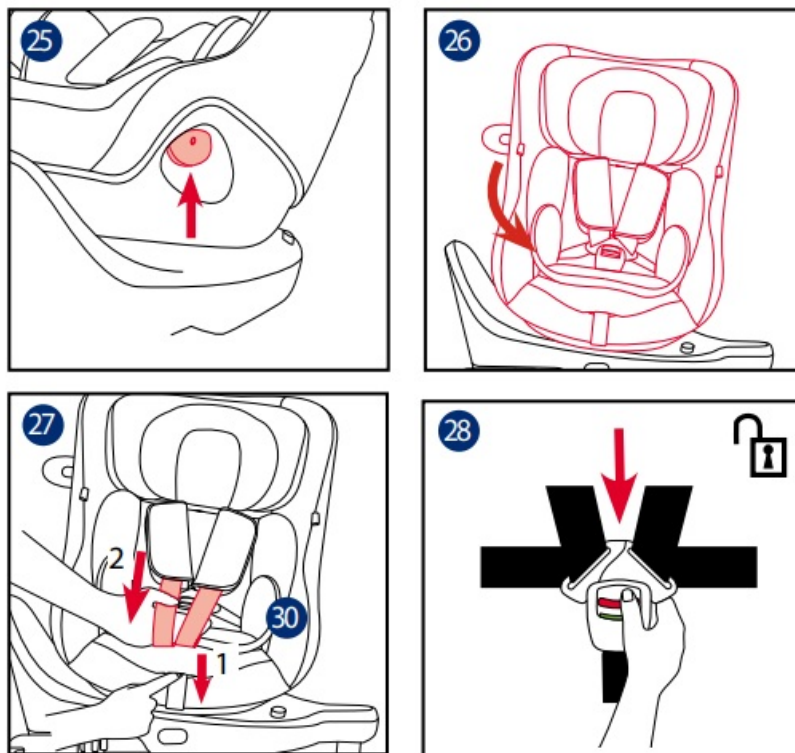
- To lengthen the shoulder harness belts, press the harness adjustment button while pulling out the shoulder harnesses to loosen. 20
- Unbuckle the harness by pressing the red button.
- Fix the buckles on both sides of the seat marked as 21 , to make placing the child in rear-facing mode more convenient.

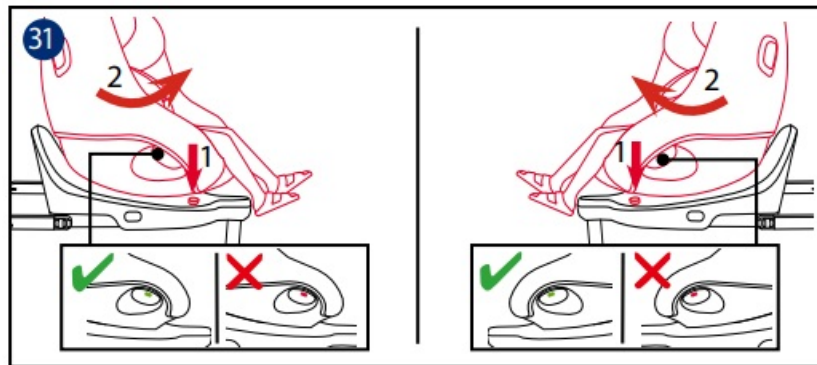
Use Infant Insert



- Place the child into the enhanced child restraint and pass both arms through the harnesses.
- Engage the buckle. Please refer to 22
- Pull down the adjustment webbing and adjust it to the proper length to make sure your child is properly secured. 23
- Always keep child secured in harness and properly tightened by removing any slack.
- Make sure the space between the child and the shoulder harness straps is about the thickness of one hand.
- When the seat is rotated in place and properly engaged, rotation button will show green; otherwise it will show red. 24
- Always make sure the seat is in locked position (rearward facing / forward facing) even when the child is not in it.
- **Using in the forward facing mode Child height 76cm-105cm/Child weight 21kg/15 months – approx. 4 years old)**

See images 25 – 32





- Install the enhanced child restraint on the rear vehicle seat, and then place the child in the enhanced child restraint.
- Press the rotation button to rotate for easier side loading/unloading of the child, then rotate the seat to the forward facing position. 25 26
- Press the rotation button on either side to rotate the enhanced child restraint.

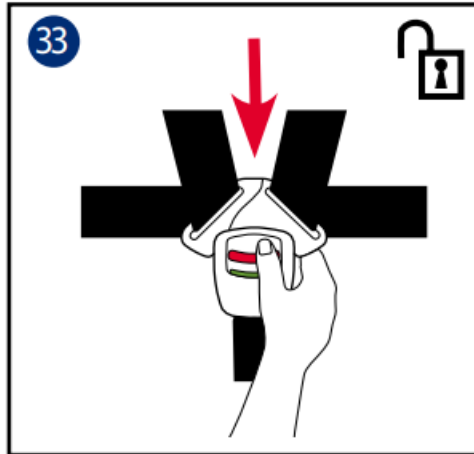
Securing Child

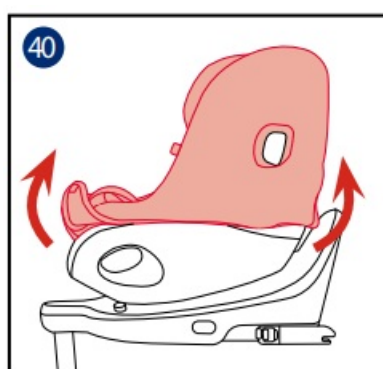
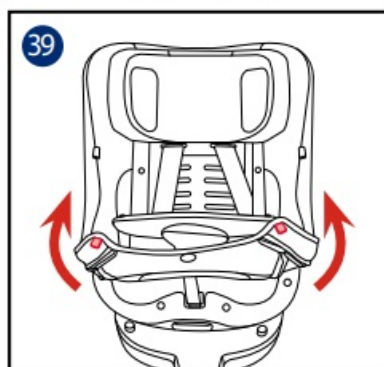
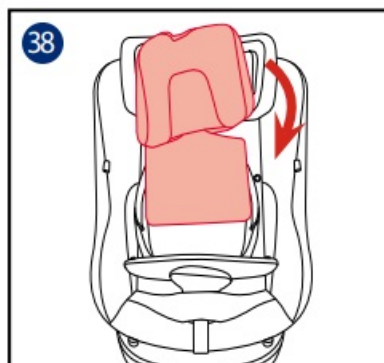
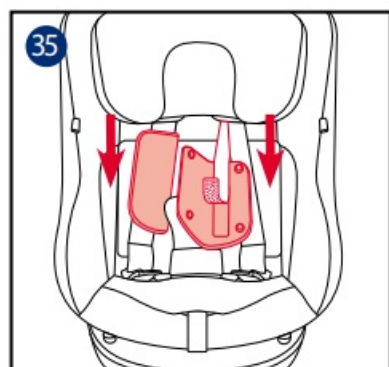
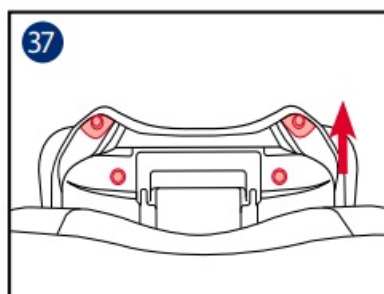
- To lengthen the shoulder harness belts, press the harness adjustment button while pulling out the shoulder harnesses to loosen. 27
- Unlock the buckle of the harnesses by pressing the red button. 28
- Remove the infant insert when in forward facing mode. 29
- Place the buckle tongues on the outer side of the enhanced child restraint so that the tongues are held in place.
- Place the child into the enhanced child restraint and pass both arms through the harnesses.
- Engage the buckle.
- Pull down the adjustment webbing and adjust it to the proper length to make sure your child is properly secured. 30
- Press the swivel lock off button
- 31 -1 while you rotate the seat to the forward facing mode. 31 -2

- When the seat is rotated in place and properly engaged, rotation button will show green, otherwise it will show red. 31
- Always make sure the seat is in locked position (rearward facing / forward facing) even when the child is not in it.
- The ISOFIX connectors must be attached and locked onto the ISOFIX anchor points. 32 -1
- The load leg must be installed correctly with green indicator. 32 -2
- Always keep child secured in harness and properly tightened by removing any slack.
- DO NOT use forward facing mode until your child's height is at least 76cm AND 15 months old.

Detach Soft Goods

See images 33 – 41





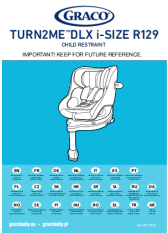
- Press the red button to disengage the buckle. 33

- Follow steps 34 – 41 to detach soft goods.
- To re-attach the soft goods please repeat the above steps in the reverse order.

Care and Maintenance

- Please wash the seat cover and inner padding with cold water under 30°C.
- Do not iron the soft goods.
- Do not bleach or dry clean the soft goods.
- Do not use undiluted detergents, gasoline or other organic solvent to wash the child restraint. It may cause damage to the child restraint.
- Do not wring out the seat cover and inner padding to dry. It may leave the seat cover and inner padding with wrinkles.
- Please hang dry the seat cover and inner padding in the shade.
- Please remove the child restraint from the vehicle seat if not in use for a long period of time. Put the child restraint in a cool, dry place where your child cannot access it.
- Do not tamper with the harness connectors during cleaning.
- gracobaby.eu www.gracobaby.pl

Documents / Resources

	<p>GRACO DLX i-SIZE R129 Child Restraint Keep for future reference [pdf] User Guide DLX i-SIZE R129 Child Restraint Keep for future reference, DLX i-SIZE R129, Child Restraint K eep for future reference, Restraint Keep for future reference, Keep for future reference, for futur e reference, future reference, reference</p>
---	--

References

- [User Manual](#)

[Manuals+](#), [Privacy Policy](#)

This website is an independent publication and is neither affiliated with nor endorsed by any of the trademark owners. The "Bluetooth®" word mark and logos are registered trademarks owned by Bluetooth SIG, Inc. The "Wi-Fi®" word mark and logos are registered trademarks owned by the Wi-Fi Alliance. Any use of these marks on this website does not imply any affiliation with or endorsement.