

Gracioso G21 Horizontal Premium Slow Juicer Instruction Manual



Contents

- [1 Manual](#)
- [2 Juicer G21 Gracioso](#)
 - [2.1 WARRANTY](#)
 - [2.2 Important safety instructions](#)
 - [2.3 Parts:](#)
 - [2.4 Instructions for use](#)
 - [2.4.1 Button and safety lock operation instruction manual:](#)
 - [2.5 Using the device](#)
 - [2.6 How to choose the ingredients:](#)
 - [2.7 Maintenance & Storage](#)
 - [2.7.1 Technical specifications:](#)
- [3 Documents / Resources](#)
 - [3.1 References](#)
- [4 Related Posts](#)



Manual

Juicer G21 Gracioso





WARRANTY

2+2 years extended warranty registration on product.

Extended warranty registration is carried out by filling out application form on the following address:

www.g21-warranty.com

Within two months from the purchase of the appliance.

Extended warranty does not apply to accessories.



Thank you for purchasing our product.

Before using this unit, please read this manual in order to avoid improper handling and use of the device.

Important safety instructions

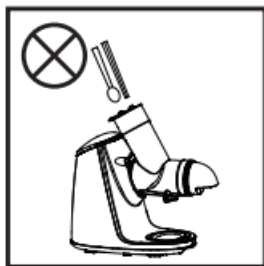
Avoid any actions which can cause danger or lead to injury.

Pay attention not to damage any parts of the device.

Warning:



1. Do not immerse the body of the juicer in water or other liquid, nor wash it with water as this can lead to electric shock or damage of the product.



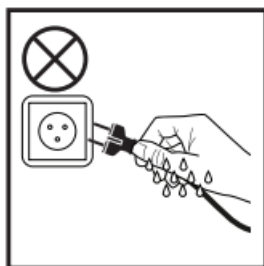
2. When the juicer is working, do not put hands or sharp objects in it. For moving the ingredients only use the tamper. Using any other objects can cause the damage of the product or injuries.



3. Do not touch the motor or any removable parts of the juicer when the juicer is operating. It can cause injury or damage of the machine.



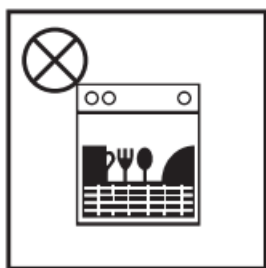
4. Do not put hot ingredients ($\geq 60^{\circ}\text{C}$) in the juicer as it can damage its individual parts.



5. Do not plug/unplug to socket with wet hands to avoid electrical shock.



6. Do not expose to high temperatures, strong magnetic field, fire, flammable and explosive gas (such as natural gas, biogas) to avoid damages, breakdowns or fire.



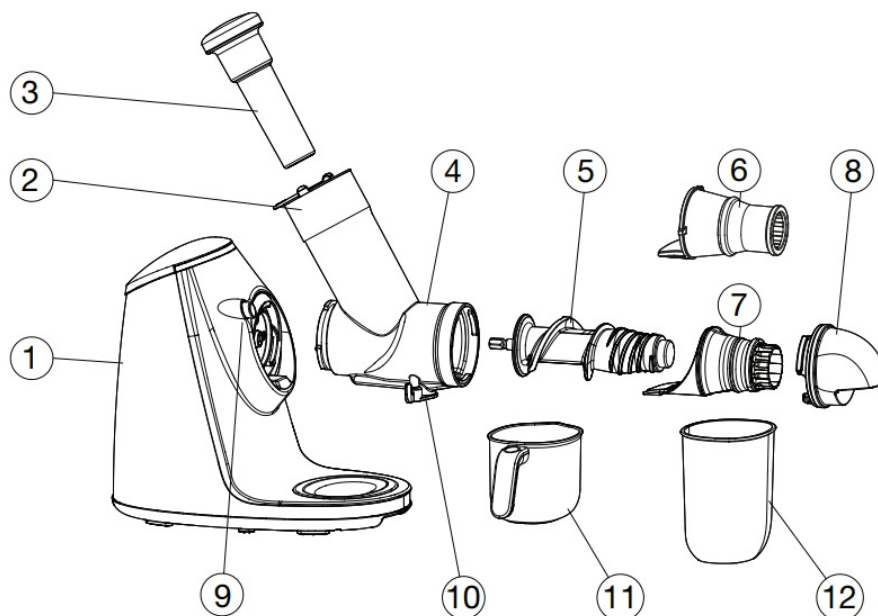
7. Do not wash the plastic parts in the dishwasher or with hot water (more than 60°C), it can cause deformation of these parts.

Caution

1. The input voltage of this product is 220-240V, 50/60Hz, please control the output voltage before using. Lower or higher voltage can damage the product.
2. Keep out of reach of children. This appliance can not be used by children or persons with reduced physical, sensor or mental capabilities or lack of experience and knowledge.
3. If the supply cord is damaged, please stop using it, it must be replaced or repaired by authorized service center. Don't replace it with other supply cord.
4. If the product needs repair during using, please contact the authorized service center or service technician. Do not repair the product on your own to avoid damage or injury.
5. Please switch off the appliance before assembly, maintenance, cleaning or reassembly to avoid electric shock, damage or injury.
6. Before operating the appliance, please check the cord or plug, juicer cone, screw rod and other components, if any component has been damaged, please discontinue to use the appliance, and contact nearest service center. Please don't dismantle and repair by yourself for safety.
7. Please be sure the detachable parts are installed properly.
8. Operate on the countertop not on the carpet, towel fabric, plastic, paper or flammable surfaces.
9. Do not operate the appliance on unstable or slanting surface to avoid accident or damage of the appliance.
10. The machine has intelligent protecting chip, it stops automatically after continuous use for 20 minutes. Let the juicer rest for 20 – 30 minutes to cool down the motor before starting another session to prolong the life of the device. As the root vegetables are very hard, cut them to 30x30x90mm pieces before juicing them. Juice only 1kg of root vegetables for one juicing session, do not juice them for more than 3 minutes.
11. If the appliance beeps after switching on or during operating, switch it off, clean it and try to switch it on again. If it does not help contact the nearest service center.
12. Cut the ingredients into pieces to better fit in the insertion hole of the juicer. Remove hard cores and hard seeds from the ingredients and peel them before juicing as hard skins, shells or seeds can cause damage to the appliance.
13. Move the ingredients slowly with the tamper, do not use hard force.
14. It can happen that the juicing screw, the juicing tube, the strainer or the juice container may be coloured by some fruits. It is normal and not harmful for health.
15. The juicing screw is made from ceramic material, it is very fragile and easy to break. Please be careful when handling it, do not let it fall down.
16. The auger is made of stainless steel, be careful not to drop it.

17. Do not use scourer, abrasive cleaners or corrosive liquids (for example Acetone) to clean the appliance.
18. Please switch the appliance off and unplug it when not using for longer time.
19. It is not necessary to set speeds as the juicer is already set to the best power.
20. Please don't heat any component.
21. Be careful when handling the sharp cutting blades, emptying the bowl and during cleaning.
22. Switch off the appliance and disconnect from supply before changing accessories or touching parts that move during the use.
23. This appliance shall not be used by children. Keep the appliance and its cord out of reach of children.
24. This appliance can be used by children from the age of 8 if they have been given supervision or instruction concerning use of the appliance in a safe way and if they understand the hazards involved.
25. Cleaning and user maintenance shall not be made by children unless they are 8 years or older and supervised. Keep the appliance and its cord out of reach of children aged less than 8 years.
26. Appliances can be used by persons with reduced physical, sensory or mental capabilities or lack of experience and knowledge if they have been given supervision or instruction concerning use of the appliance in a safe way and if they understand the hazards involved.
27. Children shall not play with the appliance.

Parts:



	Part name	Function
1	Body	Contains motor and transmission.
2	Safety lid	Connected to feeding chute, for safe protection.
3	Tamper	For moving the ingredients.
4	Feeding chute/tube	Main part for juicing, used for inserting the ingredients.
5	Juicing screw	Main part for juicing, it squeezes and crushes the ingredients.
6	Adapter	Used for processing ice cream. (Optional accessories).
7	Pressing cone	Main part for juicing.
8	Tube lid	Connects the feeding tube with other parts.
9	Safety lock	It is used to lock the feeding tube so that it can not be loosened. To remove the feeding tube from the body of the juicer you have to hold the lock.
10	Juice outlet lid	It covers the juice's outlet to avoid dripping the juice leftovers.
11	Juice container	It collects juice.
12	Pulp container	It collects pulp.

Instructions for use

BEFORE THE FIRST USE THOROUGHLY CLEAN PARTS WHICH ARE IN CONTACT WITH THE INGREDIENTS.

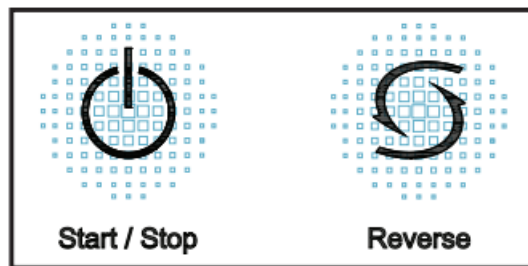
Button and safety lock operation instruction manual:

Start/Stop button:

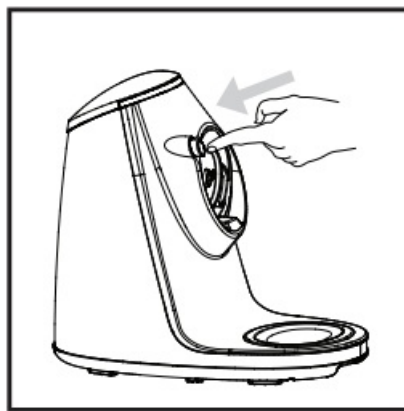
Press this button to start juicing, it automatically stops after 20 minutes of continuous working. Press the button again if you want to stop juicing.

Reverse button:

Press this button if the appliance works badly or if the juicing screw is blocked. Lightly click on this button, the juicing screw starts to reverse for 2 seconds, then it automatically stops. If it does not help, repeat this action again, then press Start/Stop button to start juicing again.

**Safety lock:**

Press the safety lock and rotate the feeding tube when removing it. The tube cannot be removed without pressing the safety lock.

**Using the device**

Install and use the device according to the instructions below:

Juice and ice cream

Ice cream function is only applicable to frozen fruits (banana, berries and so on) – Freeze the fruits for 8 hours, then let it thaw at room temperature for about an hour before processing.

1. Connect the body of the juicer with the feeding tube:
 - Align the arrow both on the tube and the body and assemble it together.
 - Rotate counterclockwise to assemble the parts together until you hear the click sound.
2. Put the juicing screw to the motor hole in the body, push to the bottom.
3. Put the pressing cone to tube groove, and push to bottom.
4. Install the tube lid:
 - Put the tube lid to the end of the feeding tube, push inside.
 - Rotate anticlockwise, align ▲ sign on the tube lid to □ sign on the tube, install together. If it is not installed properly, the tube lid will fall down.
5. Put the juice container in the groove at the bottom of the body.
6. Put the pulp container under the pulp outlet, close to the juice container.
7. Switch on the juicer and open juice outlet lid.
8. Clean the ingredients and cut into pieces, put the plate for standby.

- When juicing spinach, cut it into pieces and control the speed of adding it to the feeding chute.
 - Remove cores and hard seeds from the ingredients and peel the ingredients with thick or hard shell/skin.
 - Be careful to juice only suitable ingredients.
- Press Start/Stop button to start the machine. The machine has intelligent protecting chip, it automatically stops after 20 minutes of continuous use. If you want to stop juicing earlier, press again the Start/Stop button.
 - Add the ingredients to the feeding chute, push slowly with the tamper.
Do not use much force when pushing the ingredients.
 - After you finish juicing wait until all the juice drains off to the container, then switch the juicer off, close the juice outlet lid and set the containers aside.



How to choose the ingredients:

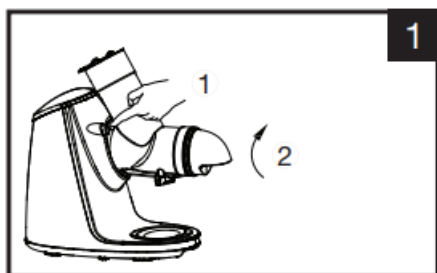
- Choose fresh fruit and vegetable containing more juice, proper material like: apple, pear, grape, melon, celery stalks, carrot, spinach, beet.
- Peel ingredients with thick skin like melon, beet. Take out seeds for fruit like peach, apricot.
- For processing apple juice use only hard apples. Do not use overripe and mealy apples.
- Fresh apple juice may become brown after few minutes, it's normal oxidation, add few drops of lemon juice to slow down the oxidation.
- Leaves and stalks (such as celery and lettuce) can be juiced in the juicer.
- Ingredients with more pulp such as strawberry, tomato, pineapple, kiwi fruit, orange, contain less juice, please juice them together with ingredients containing more juice, alternate soft and hard ingredients.
- Ingredients containing starch such as banana, pawpaw, avocado, fig and mango can't be juiced in juicer.
Process it by food processor or blender.
- Nutrition components for regular ingredients:

Fruit/vegetable	Main nutrient	(kcal) value per 200g material
Apple	Dietary fiber, vitamin B1, kalium	108
Pear	Dietary fiber , vitamin B2	100
Peach	Dietary fiber , kalium	102
Kiwi fruit	Dietary fiber , vitamin A, B1, C, calcium, kalium	122
Apricot	Dietary fiber , vitamin A, calcium, kalium	76
Orange	Vitamin A, B1, C, calcium, kalium	102
Grape	Vitamin C, kalium	88
Pineapple	Dietary fiber , vitamin C, calcium, kalium	88
Shaddock	Vitamin C, kalium	84
Water melon	Vitamin A	52
Hami melon	Vitamin A, C, kalium	68
Mulberry	Dietary fiber, calcium, vitamin B2	114
Melon	Vitamin C, kalium	54
Beet leaves	Dietary fiber, vitamin A, B1, B2, C, calcium, kalium, Fe	44
Tomato	Vitamin A, C, kalium, calcium	40
Strawberry	Dietary fiber, vitamin C, calcium, kalium, Fe	64

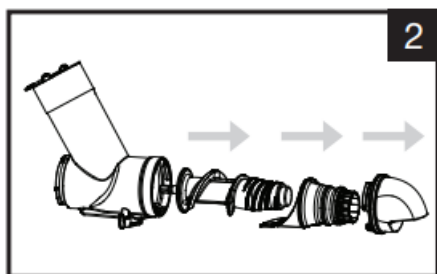
Cabbage	Dietary fiber, vitamin A, C, calcium, kalium	48
Carrot	Dietary fiber, vitamin A, C, calcium, kalium, Fe	78
Celery	Dietary fiber, vitamin B2, A, C, calcium, kalium,	34
Cucumber	Vitamin A, calcium, kalium	60
Spinach	Dietary fiber, vitamin B2, A, C, calcium, kalium, Fe	56
Bitter gourd	Dietary fiber, vitamin A, C, calcium, kalium	44
Pimento	Dietary fiber, vitamin A, C, calcium, kalium	50
Broccoli	Dietary fiber, vitamin A, C, B1, calcium, Fe	72

Maintenance & Storage

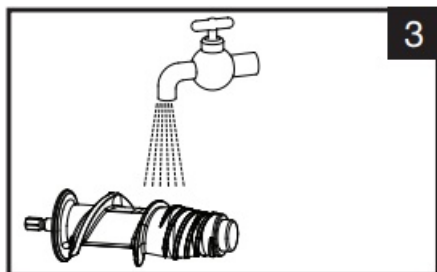
1. Make sure to switch off the device before cleaning it.
2. Clean the machine immediately after using.
3. Wipe the outer with wet cloth, do not put the juicer in water or other liquid, nor wash it with water or other liquid.
4. Store the machine in the cool place and avoid direct sunlight.
5. Make sure the machine is clean and dry before storing.
6. Dismantle according to instruction and the wash:



Press the safety lock and rotate the feeding tube clockwise to remove it. It is not possible to remove the tube without pressing the safety lock.



Remove the juice outlet lid, pressing cone and juicing screw.



Wash clean and dry the detachable parts.



Technical specifications:

Rated voltage: 220-240 V~

Rated frequency: 50/60 Hz

Rated power: 200 W

Rated speed: 70 rpm

Continuous working time: < 20 minutes

Intervals: > 20 minutes

The English version of the manual is an exact translation of the original manufacturer's instructions.
Images used in this manual are for illustrational purposes only and may differ from the actual product.



powerful blenders



hand mixers



juicers



vacuum sealers



sous-vide



kitchen machines



multifunction fryer



food dehydrators

More Products G21

Documents / Resources



[Gracioso G21 Horizontal Premium Slow Juicer](#) [pdf] Instruction Manual
G21 Horizontal Premium Slow Juicer, G21, Horizontal Premium Slow Juicer, Premium Slow Juicer, Slow Juicer

References

- g21-warranty.com