

GRACE
DESIGN

GRACE DESIGN
m908 Firmware
Migration
Procedure



GRACE DESIGN m908 Firmware Migration Procedure Instructions

[Home](#) » [GRACE DESIGN](#) » GRACE DESIGN m908 Firmware Migration Procedure Instructions 

Contents

- [1 GRACE DESIGN m908 Firmware Migration Procedure](#)
- [2 Product Information](#)
- [3 Product Usage Instructions](#)
- [4 Remove the old m908 SD Card](#)
- [5 Upgrade the RCU](#)
- [6 Documents / Resources](#)
 - [6.1 References](#)
- [7 Related Posts](#)

GRACE
DESIGN

GRACE DESIGN m908 Firmware Migration Procedure



Product Information

Specifications

- Product Name: m908
- Version: 2.1
- Storage: Micro SD Flash Card
- Location: Inside the ACU chassis on the main PCB

Product Usage Instructions

Preparing for the Update

1. Back up all workflows.
2. If on 2.x.x firmware, use web UI tools to download workflows.
If on 1.x.x firmware, use a USB flash drive.

Replacing the SD Card

1. Turn off the m908 and disconnect power.
2. Remove top cover screws with a #2 phillips screwdriver.
3. Locate the SD card socket on the main PCBA.
4. Unlock the metal cover on the SD socket and access the SD card.
5. Replace the SD card aligning the notch properly.
6. Close the socket door carefully and lock it.
7. Replace the top cover and reconnect power.

Upgrading the RCU

1. Power on the m908 and wait for the RCU upgrade prompt.
2. Ensure no disruption of system power during this process.

3. Set the unit serial number in the factory setup menu.
4. Exit Setup, wait for 10 seconds, then reboot the m908.
5. Import workflows from USB flash drive in RCU or computer using web UI.

Frequently Asked Questions (FAQ)

1. Q: How do I know if I need to upgrade the RCU firmware?

A: Depending on the version of firmware previously loaded on the m908, you may receive an upgrade prompt when powering on. Follow the instructions provided in the user manual for upgrading.

2. Q: Can I use any Micro SD card for replacement?

A: It is recommended to use a compatible Micro SD card for replacement to ensure proper functionality and compatibility with the m908.

m908

2.1.x SD Card Replacement Procedure

m908 firmware is contained in a Micro SD Flash Card located on the main PCB inside the ACU chassis. This procedure outlines how to replace the SD card.

Preparing for the update:

1. Back up all of your workflows so that you can copy them back to the m908 once the SD card has been replaced.
 - If on 2.x.x firmware use the web UI workflow tools to download your workflow files to your computer.
 - If on 1.x.x firmware use a USB flash drive plugged in to the RCU USB port.

Remove the old m908 SD Card

1. Turn off the power to the m908 and disconnect the AC power cable from the DC power supply.
2. With a #2 phillips screwdriver remove the 8 screws securing the ACU top cover.
3. Locate the SD card socket on the main pcba. When looking at the m908 from the front the SD card will be near the middle of the right hand pcb.

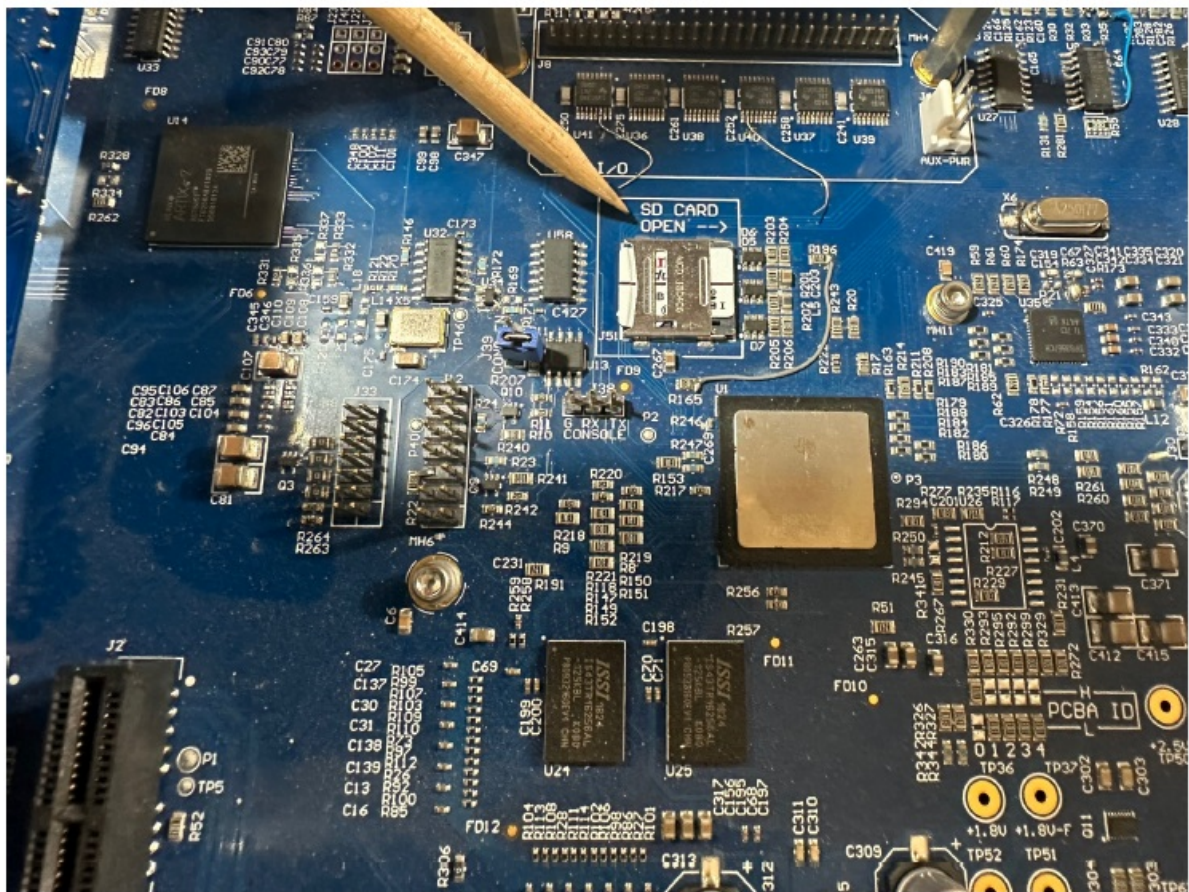


Illustration 1: SD Card Socket Location

4. Push the metal cover on the SD socket in the direction of the arrow to unlock it. Then flip it over to the right to access the SD card.

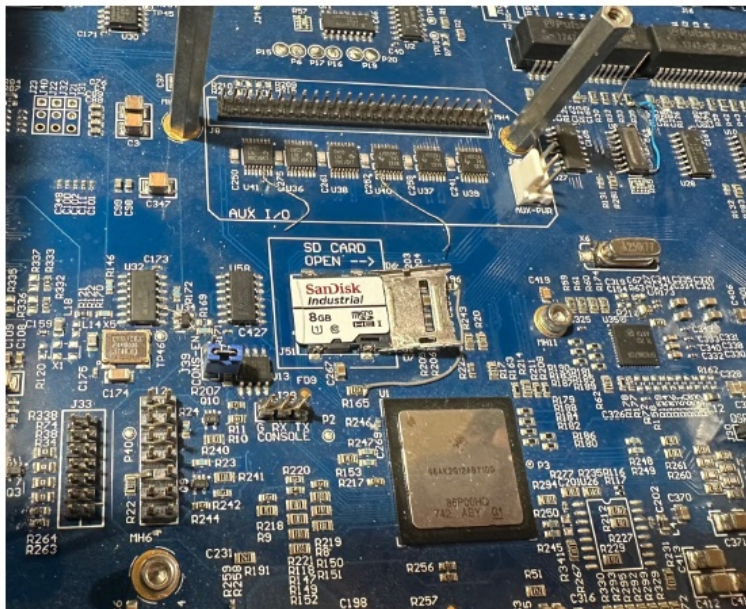


Illustration 2: SD Card Socket Opened



Illustration 3: Scan for SD card replacement video

5. Remove the SD card and replace it with the new SD card. Be sure to align the SD card notch with the holder properly.
6. Carefully close the socket door. Push the socket door to the left to lock it.
7. Replace the m908 top cover and reconnect the power.

Upgrade the RCU

1. Depending on the version of firmware previously loaded on the m908 you may need to upgrade the RCU

firmware.

2. Power on the m908 and wait for the RCU upgrade prompt.

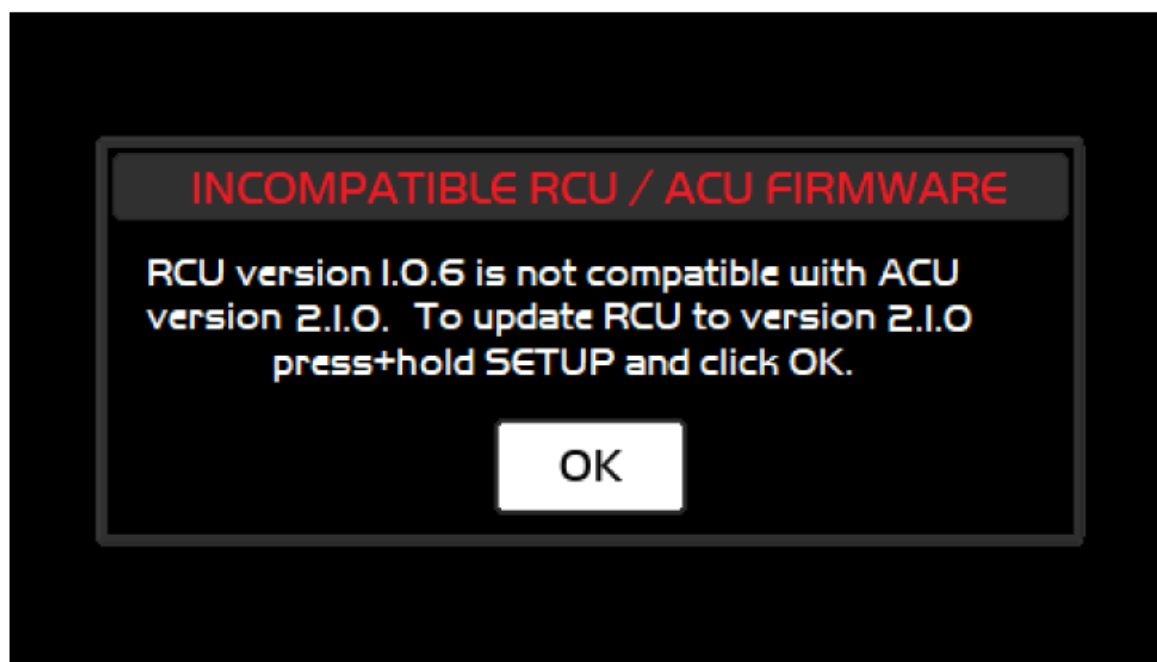


Illustration 4: Incompatible RCU / ACU Firmware

3. In this message the current RCU firmware version is displayed along with the new firmware version. Since system firmware 2.x.x requires a new version of RCU firmware the RCU firmware must be updated. To enter the RCU firmware updater, the SETUP button must be held until the LED boot sequence has completed. Once this happens, the m908 RCU bootloader will show up on the LCD. At this point you can release the SETUP button. The RCU firmware update will take approximately 8 minutes. Once it completes, the RCU will reboot and the system will start running.
4. DO NOT DISRUPT SYSTEM POWER DURING THIS PROCESS!
5. Set the unit serial number in the factory setup menu. Press Setup then push-hold the solo/mute switches L, C, and R at the same time. When in the Factory setup menu set the serial number to match the last non-zero digits of the m908 serial number. If you received the SD card from Grace Design the serial number may be already set for your unit.
6. Exit Setup and wait for 10 seconds. Then reboot the m908.
7. Import your workflows from the USB flash drive in the RCU or import them from a computer using the web UI.

Manual Revision History			
Rev.	Description	Date	Initials
A	Initial Release	1/2/2024	MBG

Documents / Resources



This website is an independent publication and is neither affiliated with nor endorsed by any of the trademark owners. The "Bluetooth®" word mark and logos are registered trademarks owned by Bluetooth SIG, Inc. The "Wi-Fi®" word mark and logos are registered trademarks owned by the Wi-Fi Alliance. Any use of these marks on this website does not imply any affiliation with or endorsement.