



GPX C200B Clock Radio User Guide

[Home](#) » [GPX](#) » GPX C200B Clock Radio User Guide 



USER'S GUIDE
V:2222-0607-10
C200B Clock Radio

Contents

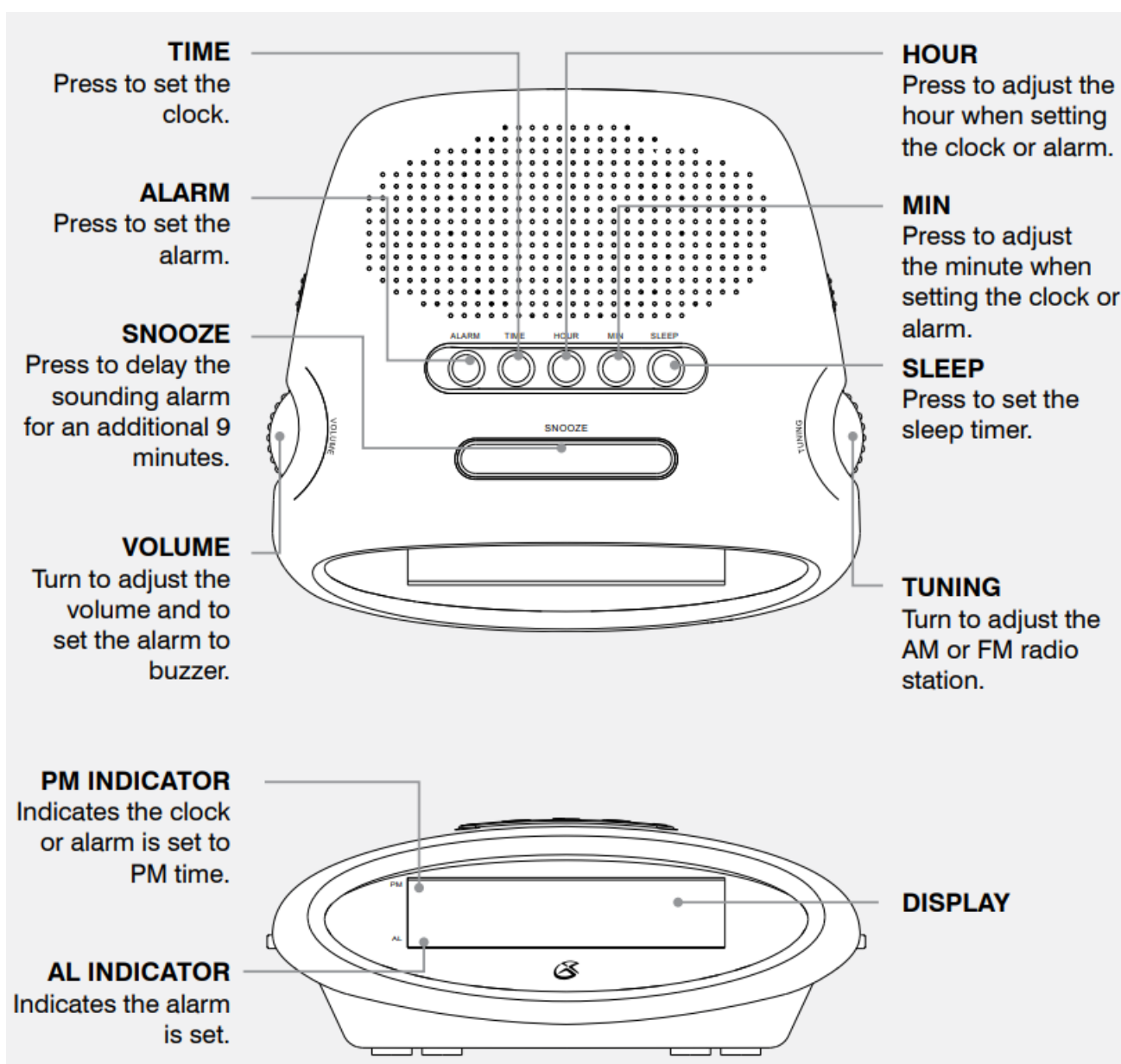
- [1 C200B Clock Radio](#)
- [2 INTRODUCTION](#)
- [3 WARNINGS AND PRECAUTIONS](#)
- [4 IMPORTANT SAFETY INSTRUCTIONS](#)
- [5 CLOCK RADIO'](#)
- [6 limited 90 day Warranty](#)
- [7 OPERATIONS](#)
- [8 company information](#)
- [9 Additional Warnings](#)
- [10 Contact Information](#)
- [11 Documents / Resources](#)

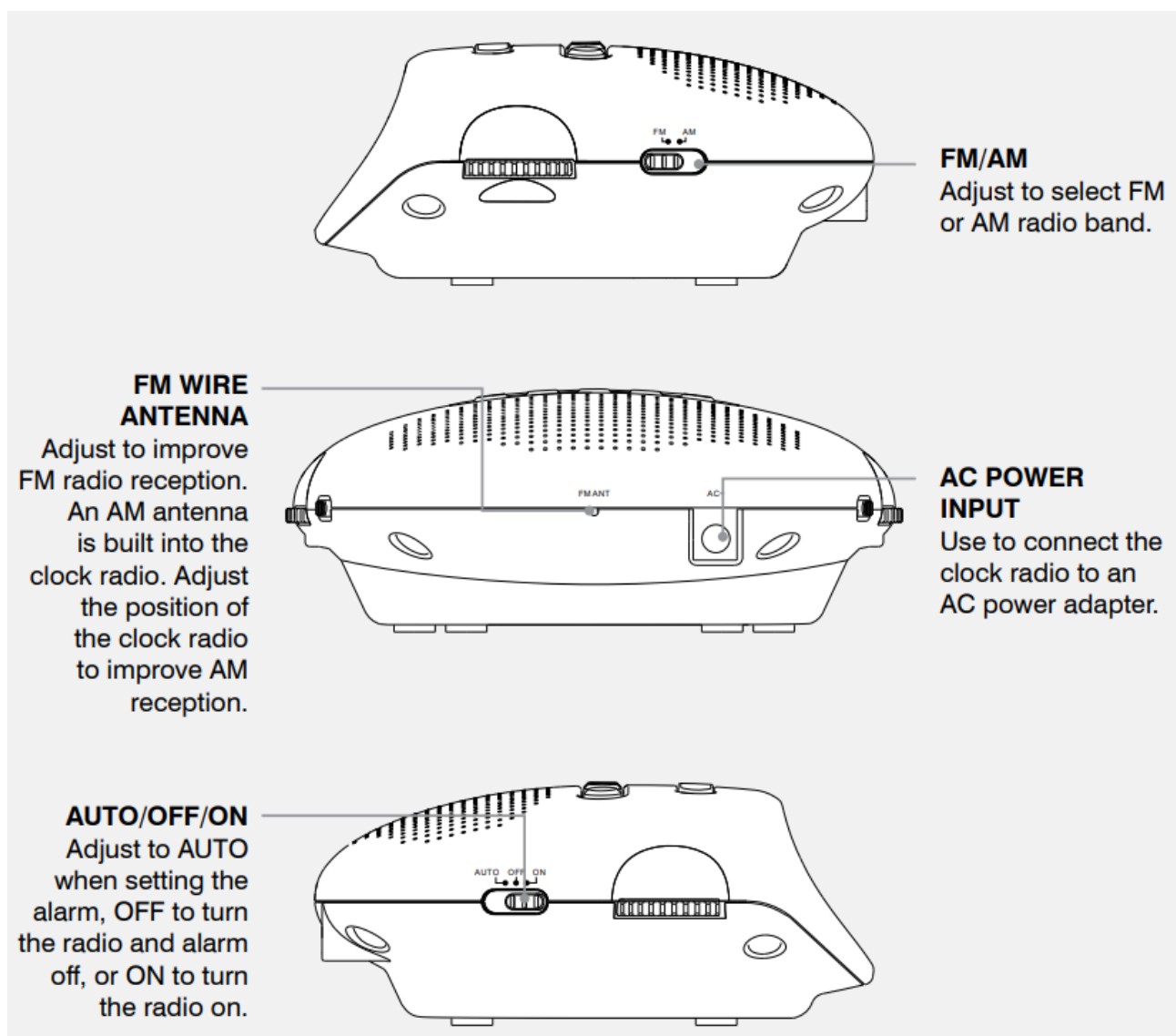
C200B Clock Radio



For the most up-to-date version of this User's Guide, go to www.gpx.com

INTRODUCTION





WARNINGS AND PRECAUTIONS

- **CAUTION:** TO PREVENT ELECTRIC SHOCK, MATCH WIDE BLADE OF PLUG TO WIDE SLOT, FULLY INSERT.
- **WARNING:** To reduce the risk of fire or electric shock, do not expose this apparatus to rain or moisture.
- **CAUTION:** Use of controls or adjustments or performance of procedures other than those specified may result in hazardous radiation exposure.
- **WARNING:** Changes or modifications to this unit not expressly approved by the party responsible for compliance could void the user's authority to operate the equipment.
- **WARNING:** Do not place the unit on top of any soft, porous, or sensitive surfaces to avoid damaging the surface. Use a protective barrier between the unit and surface to protect the surface.
- **WARNING:** Use of this unit near fluorescent lighting may cause interference regarding use of the remote. If the unit is displaying erratic behavior move away from any fluorescent lighting, as it may be the cause.
- **CAUTION:** Danger of explosion if battery is incorrectly replaced. Replace only with the same or equivalent type.
- **WARNING:** There is a danger of explosion if you attempt to charge standard Alkaline batteries in the unit. Only use rechargeable NiMH batteries.
- **WARNING:** The remote control's button cell battery contains mercury. Do not put in the trash, instead recycle or dispose of as hazardous waste

- **WARNING:** Lithium batteries, like all rechargeable batteries are recyclable and should be recycled or disposed of in normal household waste. Contact your local government for disposal or recycling practices in your area. They should never be incinerated since they might explode.

Main plug is used as disconnect device and it should remain readily operable during intended use.

Do not mix old and new batteries.

Do not mix alkaline, standard (carbon-zinc), or rechargeable (NiCad, Niamh, etc) batteries.

IMPORTANT SAFETY INSTRUCTIONS

1. Read these Instructions.
2. Keep these Instructions.
3. Heed all Warnings.
4. Follow all instructions.
5. Do not use this apparatus near water.
6. Clean only with a dry cloth.
7. Do not block any ventilation openings. Install in accordance with the manufacturer's instructions.
8. Do not install near any heat sources such as radiators, heat registers, stoves, or other apparatus (including amplifiers) that produce heat.
9. Do not defeat the safety purpose of the polarized or grounding – type plug. A polarized plug has two blades with one wider than the other. A grounding type plug has two blades and a third grounding prong. The wide blade or the third prong are provided for your safety. When the provided plug does not fit into your outlet, consult an electrician for replacement of the obsolete outlet.
10. Protect the power cord from being walked on or pinched particularly at plugs, convenience receptacles, and the point where they exit from the apparatus.



11. Only use attachments/accessories specified by the manufacturer.
12. Use only with a cart, stand, tripod, bracket, or table specified by the manufacturer, or sold with the apparatus. When a cart is used, use caution when moving the cart/ apparatus combination to avoid injury from tip-over.
13. Unplug this apparatus during lightning storms or when unused for long periods of time.
14. Refer all servicing to qualified service personnel. Servicing is required when the apparatus has been damaged in any way, such as power-supply cord or plug is damaged, liquid has been spilled or objects have fallen into the apparatus, the apparatus has been exposed to rain or moisture, does not operate normally, or has been dropped.

CLOCK RADIO'

Included

- C200B
- AC power adapter

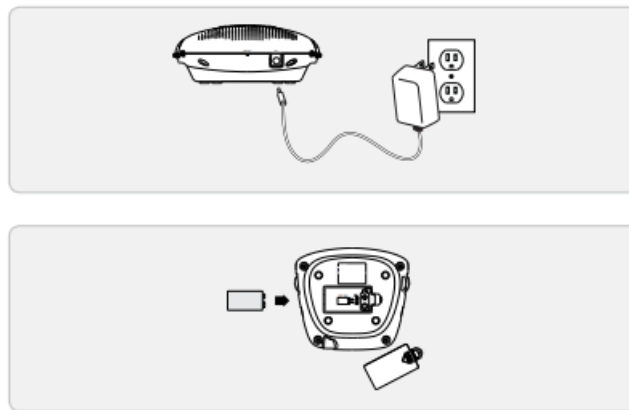
Setup power

Plug the included AC adapter into the AC POWER INPUT on the clock radio and a standard AC power outlet to power the clock radio.

Backup Battery

Requires 1 9-Volt battery (not included)

The backup battery will save the clock and alarm times in the event of a short-term, unexpected power outage.



limited 90 day Warranty

The Manufacturer warrants this product to the original purchaser to be free from defects in material and workmanship, under normal conditions, for a period of 90 days from date of original purchase.

The Manufacturer agrees, at its option during the warranty period, to repair any defect in material or workmanship or to furnish a repaired or refurbished product of equal value in exchange without charge. Such repair or replacement is subject to verification of the defect or malfunction and proof of purchase as confirmed by showing a copy of the original dated sales receipt.

For any questions regarding your product or this warranty call: 1-888-999-4215

This warranty does not cover:

- Any product which has been subject to damage due to an act of God, misuse, neglect, accident, abuse, commercial use, or modification of, or to, any part of the product, including the antenna.
- Damage to external media such as DVD, CD, iPod, iPhone, MP3 players, and/or memory devices.
- Damage due to improper operation or maintenance, connection to improper voltage supply, or attempted repair by anyone other than the Manufacturer.
- Re-manufactured units, product sold AS IS or closeout product.

Under no circumstances shall the Manufacturer be liable for any loss (direct, indirect, incidental, foreseen, unforeseen, special or consequential) or for any damage arising out of, or in connection with, the use of this product.

This warranty is valid only in the United States and grants specific legal rights. You may also have other rights which vary from state to state.

The customer is responsible for costs incurred when shipping a return back to DPI, Inc.

NOTE: For products that contain internal memory for storage of music, data, etc., the amount of memory your operating system reports may vary from the stated memory of this device.

IMPORTANT: DO NOT RETURN THIS UNIT TO THE RETAIL STORE FOR SERVICE.

INSTEAD, CALL 1-888-999-4215 FOR WARRANTY SERVICE INSTRUCTIONS.

OPERATIONS

1. Press and hold the time button.
2. While holding the time button, press the Hour button to adjust the hour, and the minute button to adjust the minute. The PM INDICATOR on the display will illuminate when the time is set in the PM.

3. Release the time button to finish setting the clock.

Setting the Sleep timer

1. Adjust the auto/off/on switch to AUTO or FF. Set to AUTO if you have the alarm set.
2. Adjust the FM/am switch to the desired radio band.
3. Press and hold the Sleep button.
4. Press the minute button to reduce the minutes on the sleep timer.
5. Press the Hour button to increase the hour on the sleep timer. (Maximum sleep timer setting: 1 hour, 59 minutes)
6. Release the Sleep button.
7. Adjust the tuning dial to the desired AM or FM radio station.
8. Adjust the Volume to an audible level between 0 and 10.
9. To cancel the sleep timer, press the Snooze button.

Setting the alarm (Buzzer)

1. Press and hold the alarm button.
2. While holding the alarm button, press the Hour button to adjust the hour, and the minute button to adjust the minute. The PM INDICATOR on the display will illuminate when the alarm time is set in the PM.
3. Release the alarm button.
4. Adjust the Volume dial to BUZZER to set the alarm to wake to buzzer.
5. Tune the radio (see "Tuning the AM/FM Radio") and adjust the Volume dial between 0 and 10 to wake to radio.
6. Adjust the auto/off/on button to the AUTO position.
The AL INDICATOR on the display will illuminate when the alarm is set.
7. After the alarm sounds, press the Snooze button to delay the alarm for an additional 9 minutes.

Tuning the am/FM radio

1. Adjust the FM/am switch to AM or FM radio band.
2. Adjust the auto/off/on switch to ON.
3. Adjust the Volume dial to an audible level between 0 and 10.
4. Adjust the tuning dial to the desired AM or FM radio station.

company information

International Support

To download this User's Guide in English, Spanish, or French, visit the support section at www.gpx.com.

FCC Warnings

NOTE: This equipment has been tested and found to comply with the limits for a Class B digital device, pursuant to Part 15 of the FCC Rules. These limits are designed to provide reasonable protection against harmful interference in a residential installation. This equipment generates, uses, and can radiate radio frequency energy and, if not installed and used in accordance with the instructions, may cause harmful interference to radio communications. However, there is no guarantee that interference will not occur in a particular installation. If this equipment does cause harmful interference to radio or television reception, which can be determined by turning the equipment off and on, the user is encouraged to try to correct the interference by one or more of the following measures:

- Reorient or relocate the receiving antenna.
- Increase the separation between the equipment and receiver.
- Connect the equipment into an outlet on a circuit different from that to which the receiver is connected.
- Consult the dealer or an experienced radio/TV technician for help.

Additional Warnings

- The apparatus shall not be exposed to dripping or splashing and that no objects filled with liquids, such as vases, shall be placed on apparatus.
- Main plug is used as disconnect device and it should remain readily operable during intended use. In order to disconnect the apparatus from the mains completely, the mains plug should be disconnected completely.

Contact Information

Phone: 1-888-999-4215
 Email: prodinfo@gpx.com
 Parts Email: partsinfo@dpi-global.com
 Website: www.gpx.com



© 2009 Digital Products International (DPI, Inc.) | All other trademarks appearing herein are the property of their respective owners. Specifications are subject to change without notice

Documents / Resources

	<p>GPX C200B Clock Radio [pdf] User Guide 01, C200B, C200B Clock Radio, Clock Radio, Radio</p>
--	---