

[Skip to content](#)

Manuals+

User Manuals Simplified.

gosund WP3 Smart Plug/Socket User Manual

[Home](#) » [gosund](#) » gosund WP3 Smart Plug/Socket User Manual

Contents [hide](#)

[1 gosund WP3 Smart Plug/Socket](#)

[2 What's in the Box](#)

[3 AT A GLANCE](#)

[4 Getting to Know Gosund App](#)

[5 How To Connect with Amazon Alexa](#)

[6 Trouble Shooting](#)

[7 Safety Information](#)

[8 Warranty](#)

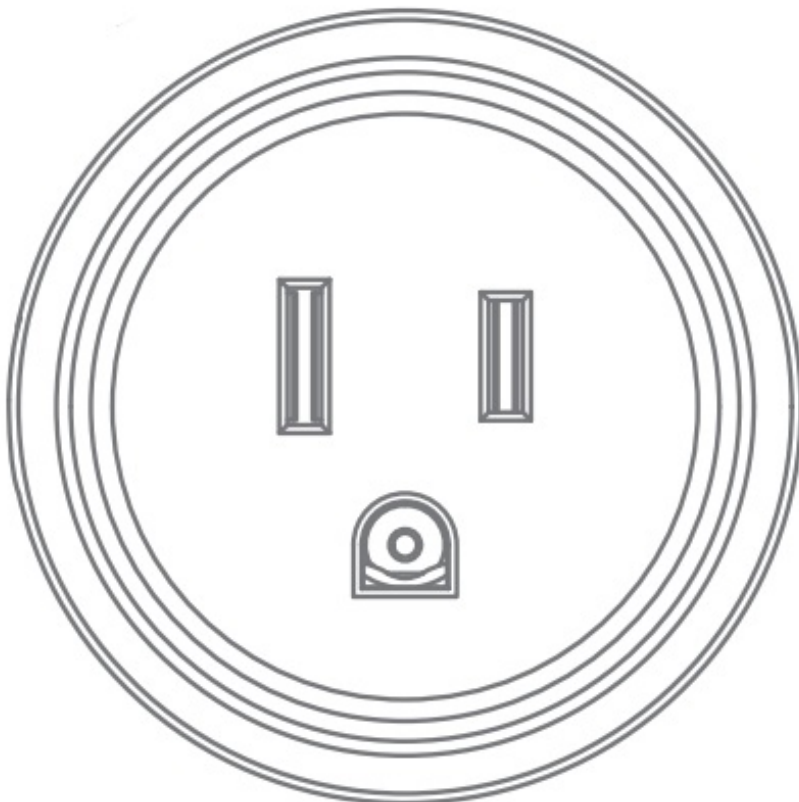
[9 Contact Us](#)

[10 Documents / Resources](#)

[11 Related Posts](#)

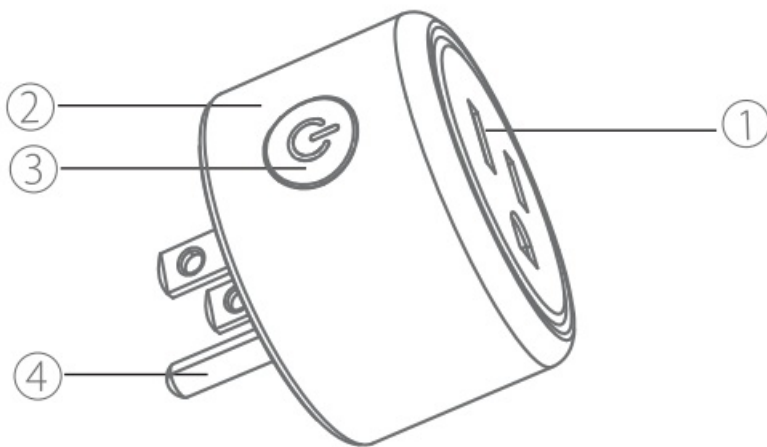


gosund WP3 Smart Plug/Socket



What's in the Box

AT A GLANCE



1. Flame Resistant Material
2. Socket Panel
3. ON/OFF Button
4. Indicator Light
5. Power Plug

NOTE: Press the ON/OFF button to restore the factory setting if you want to erase the plug's current settings.

Indicator Light Status Blue light blinks FM!JY 0.5 second-Easy Mode connection Blue light blinks fully 2 seconds Af Mode connection Red light- Power Is ON No light- Power is OFF

Parameters Input: 100-240V-, 50/60Hz Output: 1 M Max Rated Power: 1200#/12CN WI-FI Frequency: 2.4GHz

Install the “Gosuncf” App

1. . Search for Ground App on App Store/Google Play Store, or jst scan the QR code below to doY.Inload.{For iPhone, you can use build-in carma to scan the QR code. For Android, you may need a barcode scanner to do that.
Please confirm the App icon before downloading.) PS: You can also add this smart plug to the smart life app directly if you already have rr on your phone, rr is compatible and works the same Wf1i/.
2. Register an account and memories the password, enter your email address or your phone number, then obtain a verification code to complete the registry.

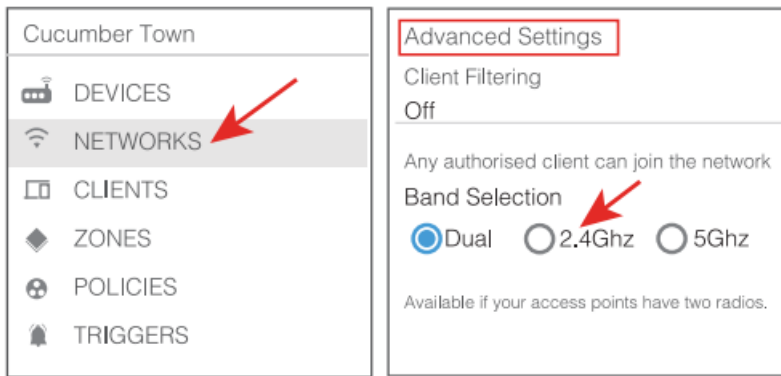
Connect with Your Cellphone

Requirements: 2.4GHz Wi-Fi conditional home For 2.4Ghz W1-Fi

1. .If you only have 5GHz Wi-Fi router.you wil not be able to complete the connection.
2. If you are using a dual WI-FI router and it broadcast 2 Wi-Fi signals, make sure that your phone was connected mth the 2.4GHz Wi-Fi signal, it should be the WI-FI signal that next to 5G”

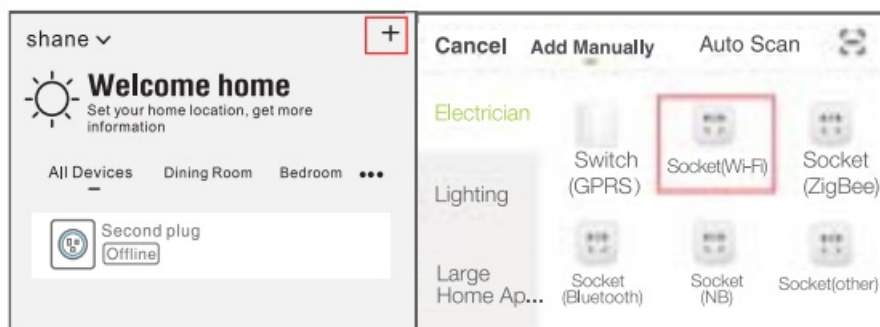


3. If you are using a dual WI-FI router but It broadcast only 1 WI-FI signal, you will have to manage your Wi-Fi router and change the settings to have 2.4GHz WI-FI.

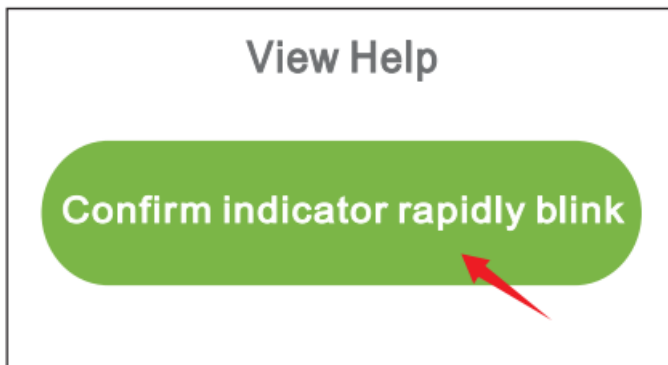


For Easy Modle Connection- Blue indicator Ught Blink Rapidly (Twice a second).

- Confirm that the smart plug is well Installed
- Open Gosund app
- Choose the symbol,



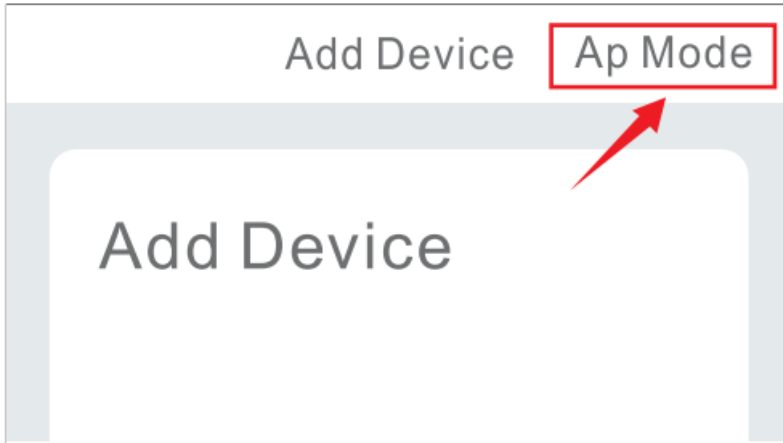
- Socket (WI-A)”
- Confirm the light status on your plug and follow the App guide. (If you don't see blue light quickly blinking,press On/Off button to reset.)
- Set a unique name for this smart plug, choose the room location.



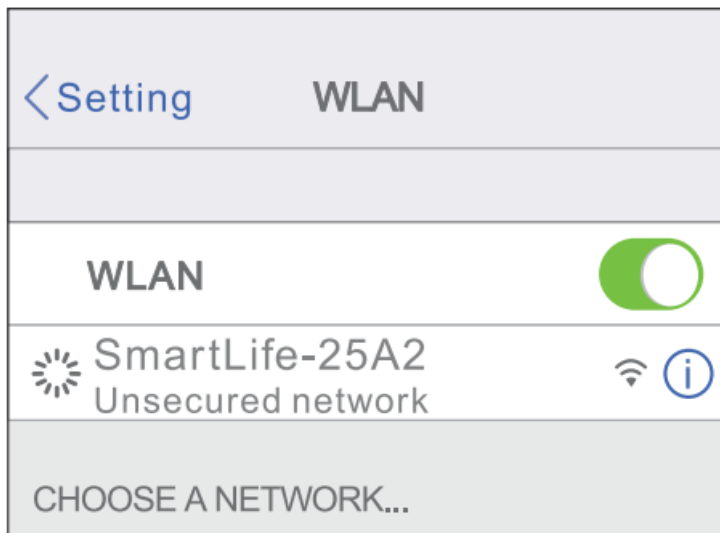
Model and icator light blinks once fN8ry 2 second If the Easy mode connection failed, please remove end install the smart plug into your power outlet again. When you make sure the Indicator light Is quickly blink again for Easy mode,

hold the power button for about seconds to plug to AP mode. Once you see the Indicator light slowly blink(every 7 seconds), you can start to try the Af mode connection.

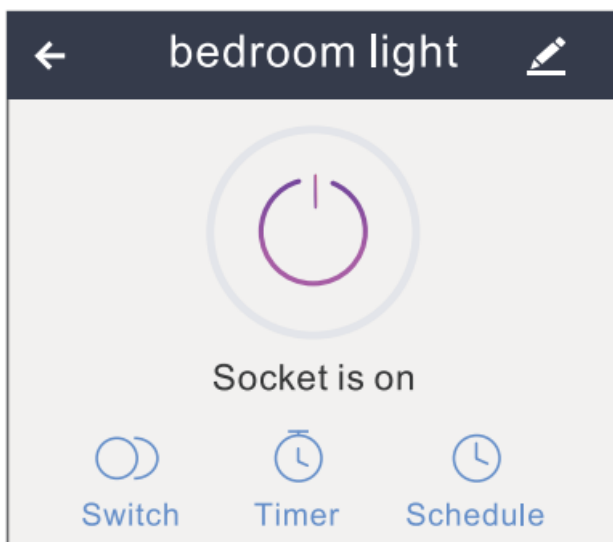
- Rrst go back to the Add Device Interface, choose the AP Mode on the upper right corner



- Long press on/off button until the indicator light flashes etc)
- Maka sure the Indicator light Is fleshing slowly and confirm it in App
- loose your 2.4G Wi-Fi and enter the password and confirm It In App
- Tap "Connect now" and ch0058 Wi-Fi hotspot named "Smart life-xxx then go back to Gosund application
- Wait till successful configuration and then tap "Completed"__



Getting to Know Gosund App



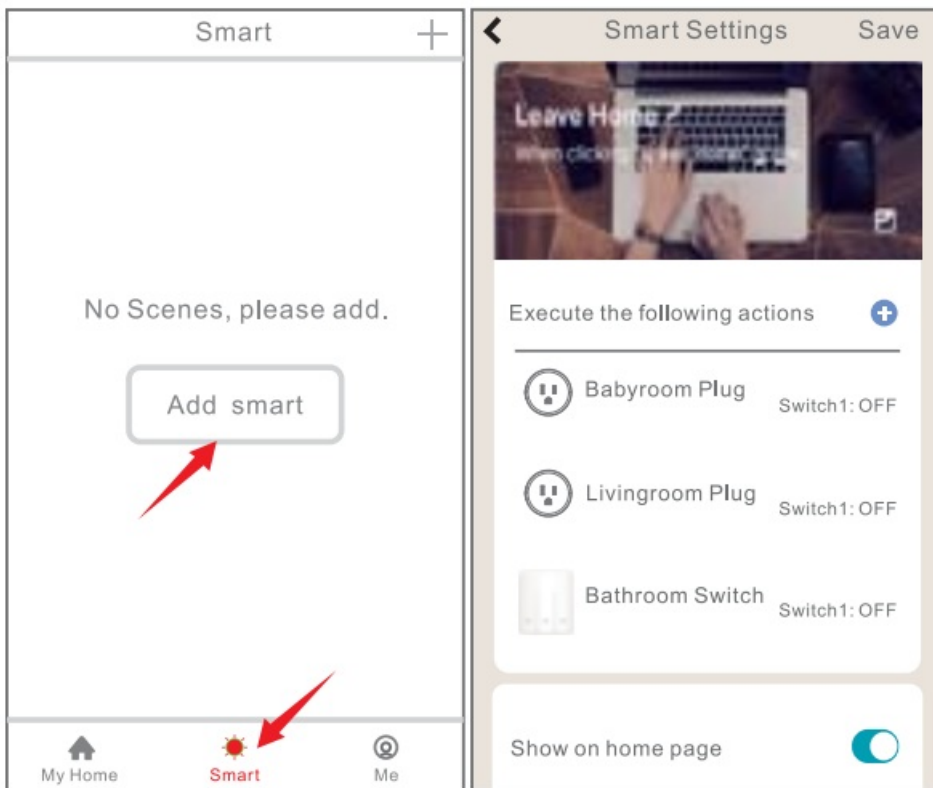
- Set schedule

- Set device names
- Set timer

Note: edit the default names in this interlace, for better management

Create Scenes/Groups

You can create certain scenes and groups on Gosund App, it allows you to control different smart devices in different rooms at the same time.A:



Device Sharing

If you want to give others permission to control your smart plug, you can authorize that by device sharing function. Go to the Gosund app

- Choose the device you want to share
- Choose Edit Button Choose shared devices
- Add sharingEnter his/her Gosund account
- Search and complete.

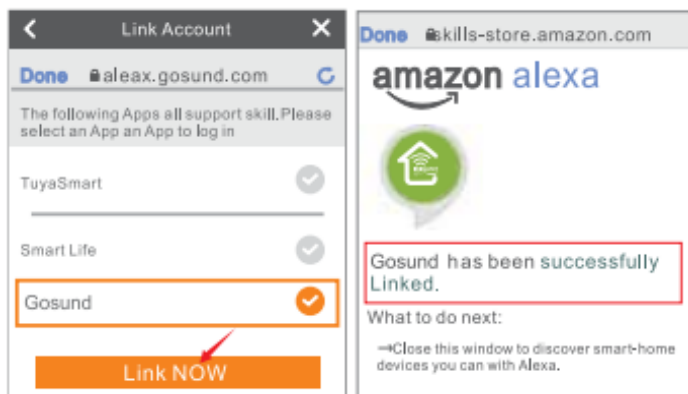
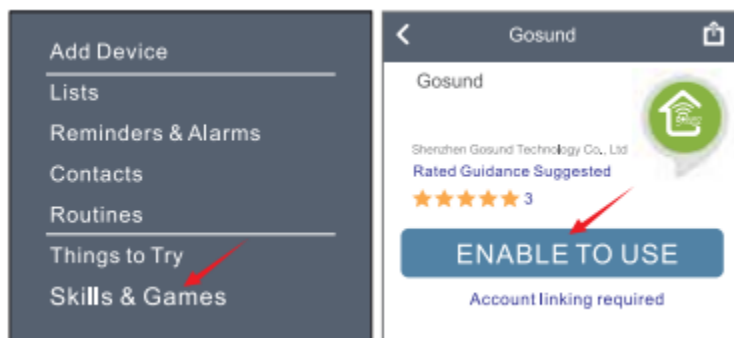
How To Connect with Amazon Alexa

Requirements:

1. .Amazon Alexa Device and Alexa App
2. .The Smart Plug connected with GosundApp
3. .Gosund App user ID and password.

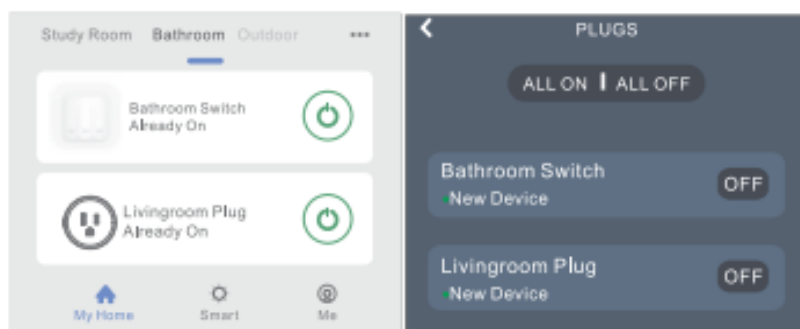
Add Gosund as a "Skill" for Alexa Open Alexa app and choose Skills & Games

- Search for Gosund
- ENABLE TO USE
- Enter the Gosund account
- Authorize to use
- Choose Gosund. And then, the devices you added on will sync to Alexa App. You can also ask Alexa to discover new devices for you in this moment.



How to ask Alexa to turn on/off Smart Plug

First, you need to set an exact name for the plug on Gosund app. If not, Alexa may tell you: "Sorry, I can't find the device named xxx, You can say to Alexa Alexa, turn on/off bathroom plug", this command will help you to do the work



Things you can do with Alexa

- Voice Control the smart plug
- Remotes Control the smart plug
- Add the smart plug to certain groups on All (an App For other questions about Alexa, please find out with Amazon Alexa support page, or contact us for help directly by email).

Tips for using Alexa Voice Control Please make sure the device name you set for the smart plug is unique and recognizable for Alexa voice assistant. You should make sure all the smart devices names at your home are nonrepetitive and recognizable for Alexa. Voice assistant system needs the exact command to do the work

How To Connect with Google Home

After you connected the smart plugs with Gosund app successfully, you can start to link them to

Google Home app:

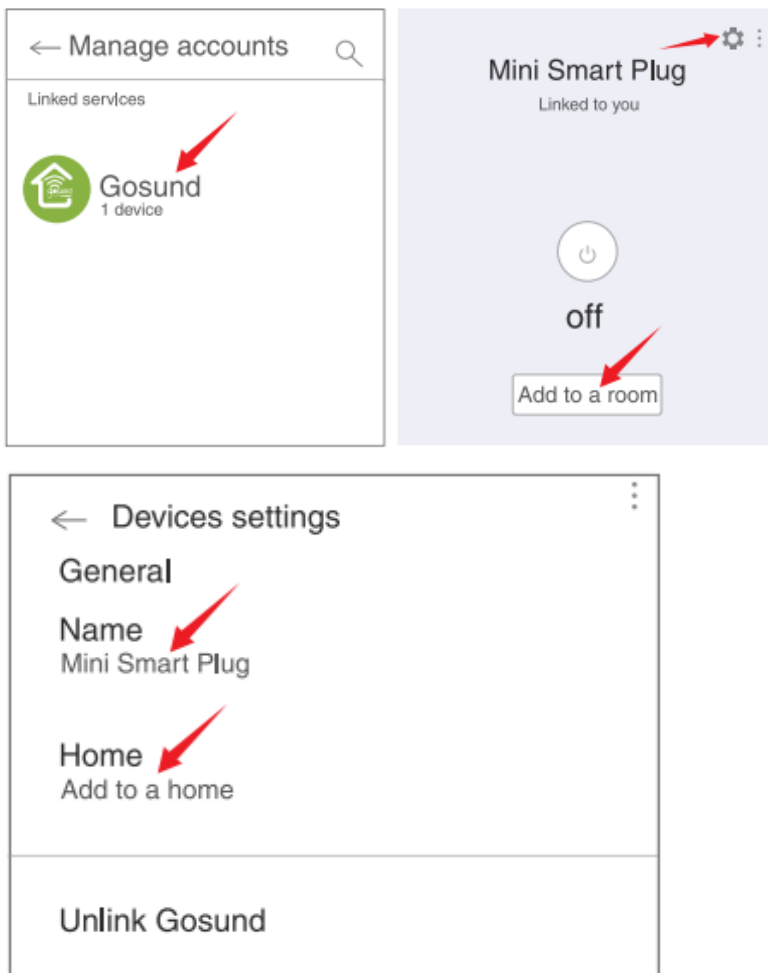
Open Google Home app and find "Set up device"

- Click "Works with Google"
- Search Gosund
- Enter your Gosund account
- Authorize to use.

After that you will see the smart plugin the home page of Google Home as “Linked to you”, but you still haven’t set the device name and assigned a home or e room for it



Now click the device that “Linked to you” or open “Works with Google” again to manage your linked del, follow the steps below end sat up the device names, rooms and home for the smart plug, you won’t be able to voice control it before you complete that.



Trouble Shooting

- Q: Why my phone connection fell?
A: "You should try both Easy Mode and Advanced Mode, read page 6-page 14, make sure to follow the guide and try again_ Confirm your home Wi-Fi is 2.4GHz and you entered the correct password during the connection. Remove&Install the smart plug to start again, see what happens. Contact the after-sales service for further help if you still have problems with the connection after following the steps above.
- Q: Why can't I voice control it with my Alexa/Google?
Make sure you set up smart plug successfully on Gosund app, and they are working fine. Make sure you put a content account when you link Gosund as a Skill on Alexa/Google App, and you can find it on your skills.
 - Make sure your Alexa/Google device is working fine.
 - Check the device names that you set for this smart plug, it should be nonrepetitive and recognizable for the voice assistants, Also, please make sure your native language is available for Alexa. If you still having trouble to voice control our smart plug after following all instructions, do not hesitate to contact us for help.
- Q: Do I need to set up the device again if I changed my router?
A: Yes! you must set up the smart plug again if there is a switch/ change of the current Wi-Fi status. either you changed your router or you moved the device to a new house. However, you don't need to worry if you are just moving it inside your room, with the same Wi-Fi.
- Q: Why does it turn on/off or comes offline surprisingly?
A: Check your Wi-Fi status and make sure the electricity is fine. Check if you've set timer for it. If everything looks alright, just reset the smart plug on your app again and see what happens. Email to after-sales services if this problem still exists.

Safety Information

This device is for Indoor&Dry condition use only. Make sure the plug electricity is correct for the appliances that you attempt to use with. Do not try to disassemble this device by yourself, be aware of product damage and safety risks. Keep away from hot, humid and extreme environments. This device meets the UL94 V-0 flammability standard.

Warranty

90 days money-back guarantee: If you're not satisfied with this purchase, you can choose to refund this order within 80 days. 12 months limited warranty: Device was used in proper- technical working condition. Covers u nartificial failures and defections on this dev1ce_ Risk of Damage: Not suitable for appliances that exceed 1 M Current, be careful. Do not cover If the device was found artificial disassembled.

Contact Us

Friendly reminder: Different App versions may lead to differences In the Interfaces, but the description of the function should be the same_ For any inquiries or oomments concerning our products, please send email to: service@gosund.com.

We w111 try our best to help you.

Manufacturer:

Shenzhen Gosund Technology Co., Ltd Website: www.gosund.com Email Support: service@gosund.com.

Documents / Resources



[gosund WP3 Smart Plug/Socket](#) [pdf] User Manual

WP3, 2APUZ-WP3, 2APUZWP3, Smart Plug Socket, WP3 Smart Plug Socket

[Manuals+](#),

- [home](#)
- [privacy](#)