



[Home](#) » [gosund](#) » **gosund ST20 Zigbee PIR Motion Sensor User Manual** 

Contents [[hide](#)]

- [1 gosund ST20 Zigbee PIR Motion Sensor](#)
- [2 INTRODUCTION](#)
- [3 Diagram](#)
- [4 Specifications](#)
- [5 Checklist before using the device](#)
- [6 How to Set Up](#)
- [7 Features](#)
- [8 Warranty Conditions](#)
- [9 EU Declaration of Conformity](#)
- [10 Documents / Resources](#)
 - [10.1 References](#)



gosund ST20 Zigbee PIR Motion Sensor

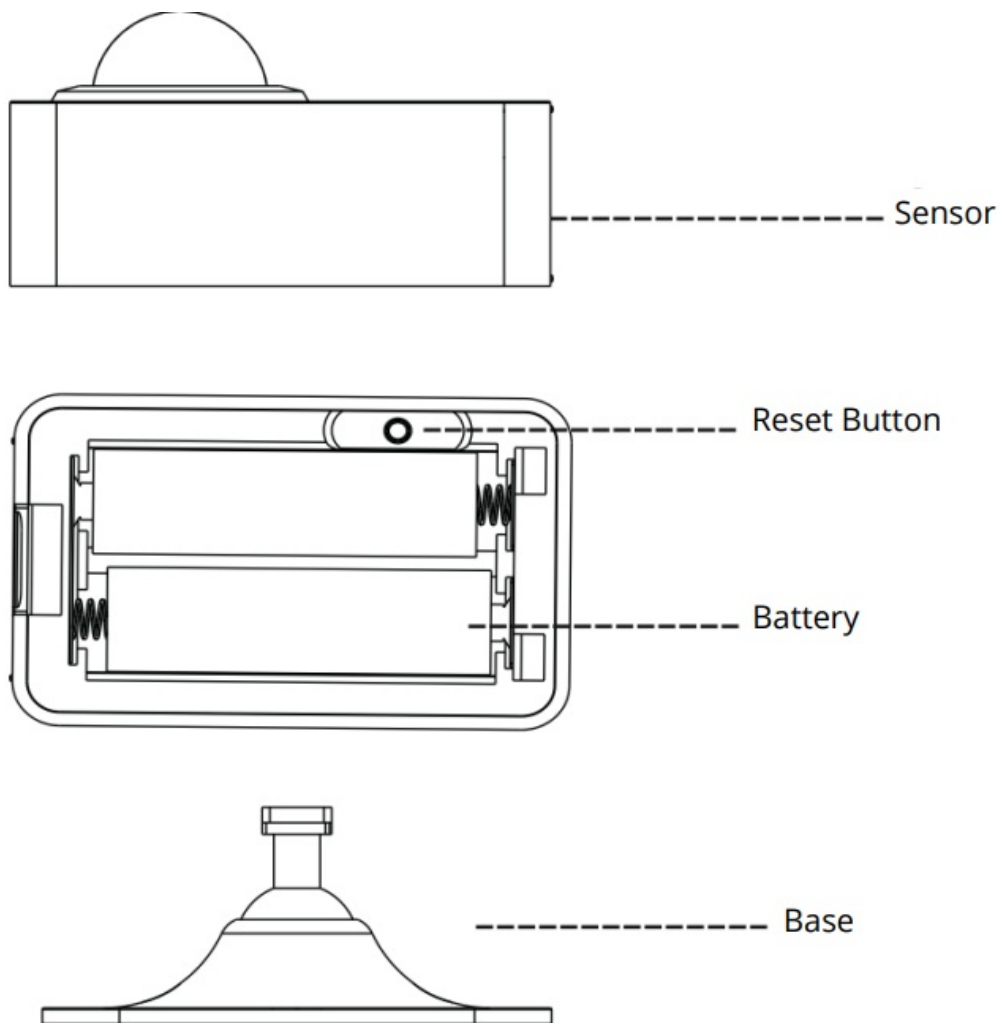


INTRODUCTION

Dear customer,

- Thank you for purchasing our product. Please read the following instructions carefully before first use and keep this user manual for future reference.
- Pay particular attention to the safety instructions. If you have any questions or comments about the device, please visit our customer support page:
www.alza.cz/EN/kontakt.

Diagram



Specifications

- **Specification Value**
- **Model** ST20
- **Size** 70×45×35.6 mm
- **Battery** 2× LR6 1.5V AA (Alkaline battery)
- **Standby Current** $\leq 18 \mu\text{A}$
- **Alarm Current** $\leq 3 \text{ mA}$
- **Detection Angle** 128°
- **Detection Distance** $\leq 8 \text{ m}$
- **Wireless Frequency** 2.4 GHz
- **Zigbee Frequency** IEEE 802.15.4
- **Working Temperature** $0^\circ\text{C} - 50^\circ\text{C}$
- **Working Humidity** 10% – 85% RH

Checklist before using the device

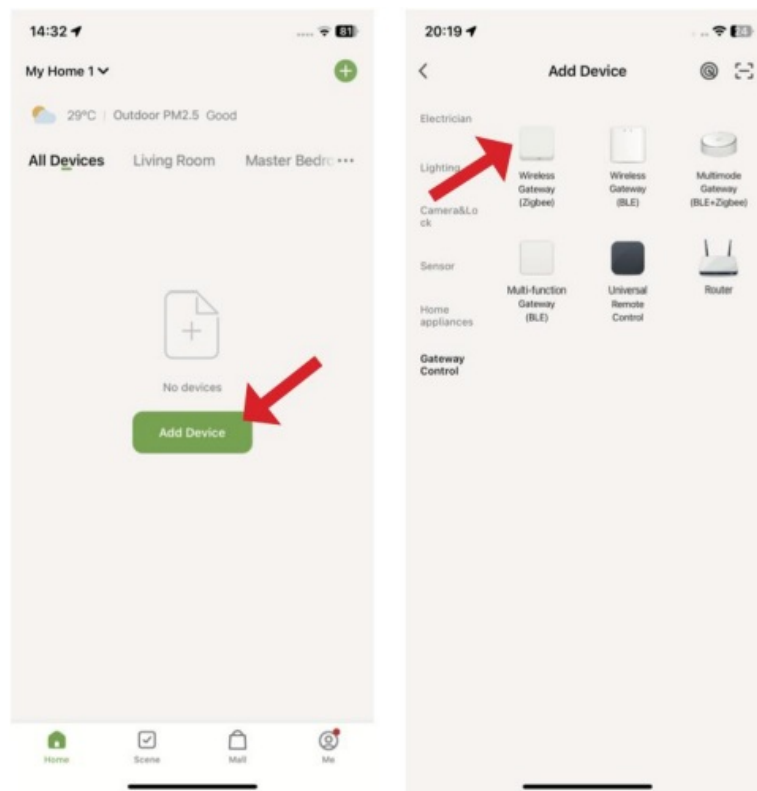
- A Zigbee gateway is available for configuration.
- Your smartphone is connected to a 2.4GHz Wi-Fi network.
- You have entered the correct Wi-Fi password.
- Your smartphone must be Android 4.4+ or iOS 8.0+.
- Your Wi-Fi router's MAC filtering is disabled (MAC-open).
- If the maximum number of devices connected to your Wi-Fi router is reached, you can try disabling another device to vacate the channel or try connecting with a different Wi-Fi router.

How to Set Up

- Use your smartphone to scan the QR code, or search for the “Gosund” app in Google Play or the App Store to download and install it.

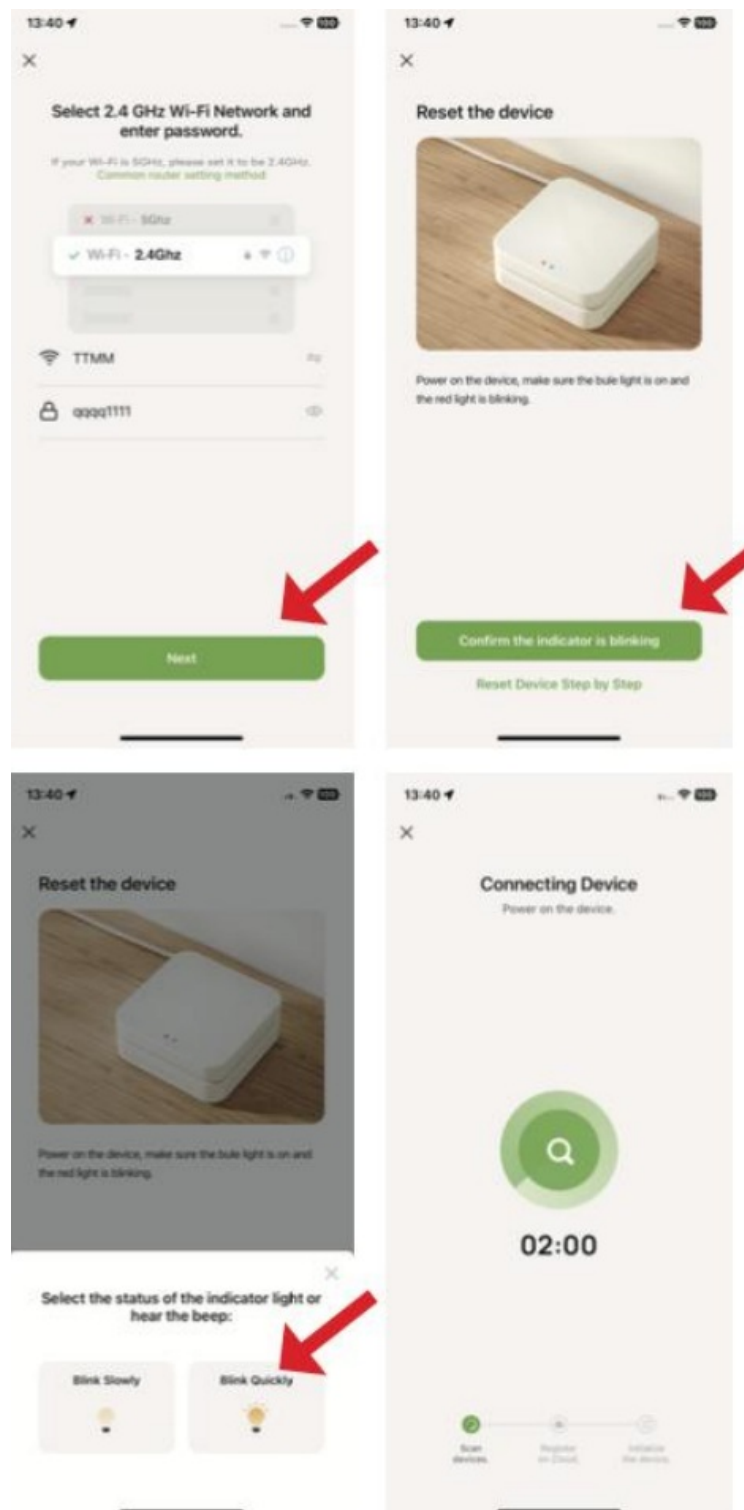


- Create an account using your mobile number and the received authentication code.
- First, you need to bind a Zigbee gateway. Connect your mobile phone to your Wi-Fi router. Tap the “+” icon in the upper right corner of the app's homepage or tap “Add Device”.
- Then select “Wireless Gateway (ZigBee)” from the “Gateway Control” category.

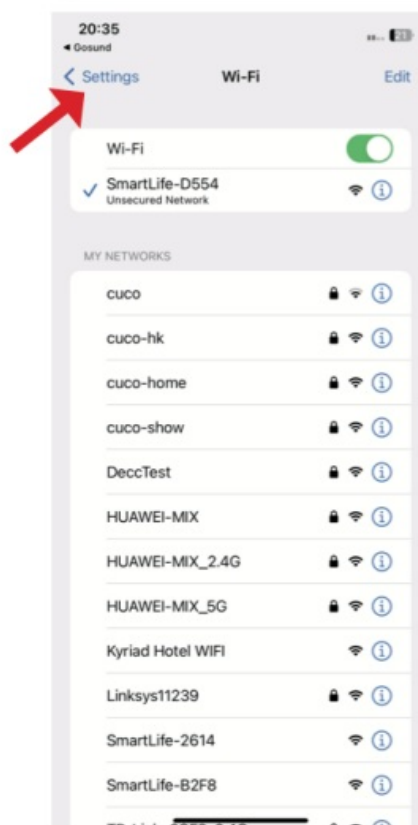
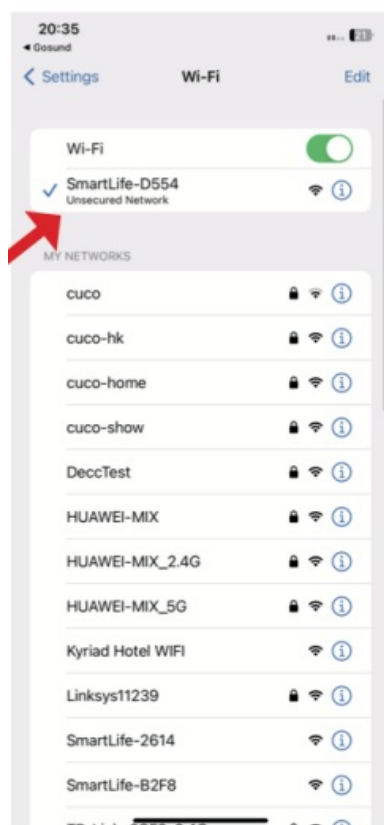
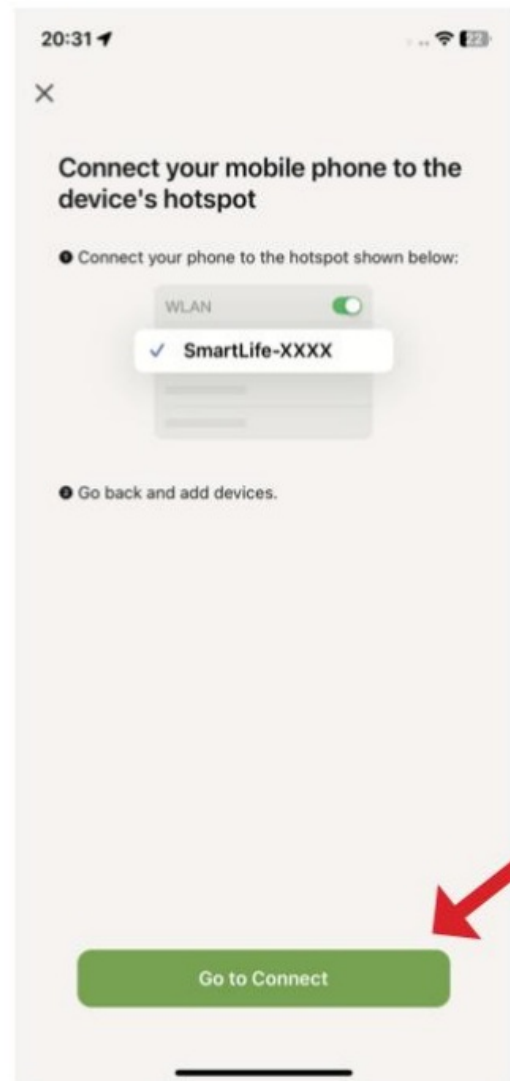
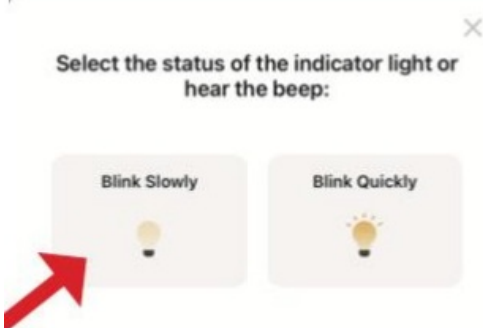


Adding the Gateway:

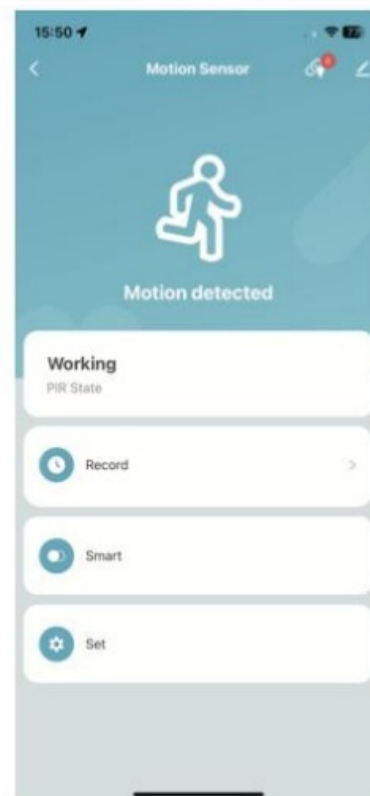
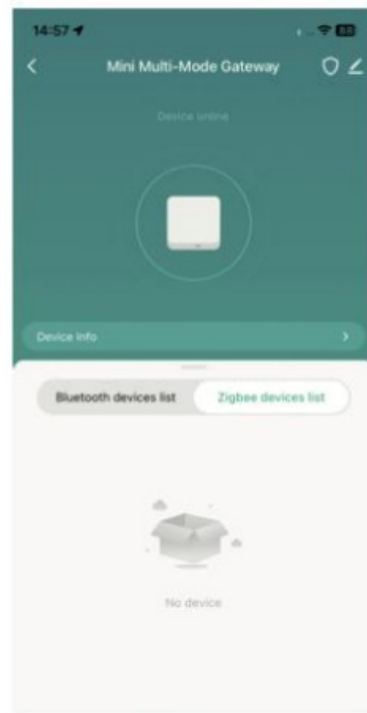
- Select “Blink Quickly”. Ensure the distribution indicator light on the Zigbee gateway is blinking rapidly. If not, press and hold the reset button for approximately 5 seconds until the red indicator blinks rapidly.



- Alternatively, you can select “Blink Slowly”. Ensure the red indicator is blinking slowly. If not, press and hold the reset button for approximately 5 seconds until the red indicator blinks slowly.
- Connect your mobile phone to the device’s hotspot: “SmartLife-XXXX”, then return to the App interface. It will connect to your Wi-Fi router automatically.



- Click “Add sub-devices” (or a similar option in the app for the gateway).



- Open the back cover of the sensor's battery compartment and remove the insulation sheet.
- Ensure the sensor's LED indicator is blinking rapidly. If it is not, press and hold the reset button for about 5 seconds until the indicator blinks rapidly. The app will search for nearby devices and add them automatically.
- After adding the sensor, close the back cover. You can mount the sensor using the provided adhesive tape or secure it to the wall with the supplied screws.

Features

- **Alarm Alert:** Whenever the sensor detects a person or animal passing by, it will send an alarm notification to keep you alert.
- **Push Notification:** An instant notification is pushed to your phone immediately when movement is detected, keeping you informed at all times.
- **Alarm Recording:** Check all alarm records within the app. You will never miss any important moments.
- **Device Sharing:** You can share your added sensors with family members or friends, so they can also monitor the status.
- **Intelligent Linkage:** You can create intelligent linkages with lights or other smart devices.

Notes

- When using the sensor for the first time, it will trigger an alarm upon detecting your movement.
- There is a 30-second interval after you leave the detection range before the sensor will trigger another alarm if movement is detected again.

Warranty Conditions

- A new product purchased in the Alza.cz sales network is guaranteed for 2 years. If you need repair or other services during the warranty period, contact the product seller directly.
- You must provide the original proof of purchase with the date of purchase.
- The following are considered to be a conflict with the warranty conditions, for which the claim may not be recognised.
- Using the product for any purpose other than that for which the product is intended or failing to follow the instructions for maintenance, operation, and service of the product.
- Damage to the product by a natural disaster, the intervention of an unauthorised person or mechanically through the fault of the buyer (e.g., during transport, cleaning by inappropriate means, etc.).
- Natural wear and ageing of consumables or components during use (such as batteries, etc.).

- Exposure to adverse external influences, such as sunlight and other radiation or electromagnetic fields, fluid intrusion, object intrusion, mains overvoltage, electrostatic discharge voltage (including lightning), faulty supply or input voltage and inappropriate polarity of this voltage, chemical processes such as used power supplies, etc.
- If anyone has made modifications, modifications, alterations to the design or adaptations to change or extend the functions of the product compared to the purchased design or use of non-original components.

EU Declaration of Conformity




This product complies with the legal requirements of the European Union directive(s).

WEEE

- This product must not be disposed of as normal household waste under the EU Directive on Waste Electrical and Electronic Equipment (WEEE – 2012/19/EU).



-  Instead, it shall be returned to the place of purchase or handed over to a public collection point for the recyclable waste.
- By ensuring this product is disposed of correctly, you will help prevent potential negative consequences for the environment and human health, which could otherwise be caused by inappropriate waste handling of this product.
- Contact your local authority or the nearest collection point for further details. Improper disposal of this type of waste may result in fines under national regulations.
- **Importer**
- Alza.cz a.s., Jankovcova 1522/53, Holešovice, 170 00 Praha 7, www.alza.cz

Documents / Resources



[gosund ST20 Zigbee PIR Motion Sensor \[pdf\]](#) User Manual

ST20, ST20 Zigbee PIR Motion Sensor, Zigbee PIR Motion Sensor, PIR Motion Sensor, Motion Sensor

References

- [User Manual](#)

🔍 gosund, Motion Sensor, PIR Motion Sensor, ST20, ST20 Zigbee PIR Motion Sensor, Zigbee PIR Motion

📁 gosund Sensor

Leave a comment

Your email address will not be published. Required fields are marked *

Comment *

Name

Email

Website

☐ Save my name, email, and website in this browser for the next time I comment.

[Post Comment](#)

Search:

[Search](#)

[Manuals+](#) | [Upload](#) | [Deep Search](#) | [Privacy Policy](#) | [@manuals.plus](#) | [YouTube](#)

This website is an independent publication and is neither affiliated with nor endorsed by any of the trademark owners. The "Bluetooth®" word mark and logos are registered trademarks owned by Bluetooth SIG, Inc. The "Wi-Fi®" word mark and logos are registered trademarks owned by the Wi-Fi Alliance. Any use of these marks on this website does not imply any affiliation with or endorsement.