




Gosund SP112 Smart Socket User Manual

[Home](#) » [gosund](#) » Gosund SP112 Smart Socket User Manual 

Contents

- 1 Gosund SP112 Smart Socket
- 2 Product Information
- 3 Product Package
- 4 Download the Gosund App
- 5 Connecting the Socket with the App
- 6 Easy Mode
- 7 AP Mode
- 8 Getting to Know the Gosund App
- 9 Devices
- 10 Scenes
- 11 Profile
- 12 Safety Information
- 13 Product Package
- 14 Parameters
- 15 Download the Gosund App
- 16 Connecting the Socket with App
- 17 Easy Mode
- 18 AP Mode
- 19 Getting to Know the Gosund App
- 20 Safety Information
- 21 Warranty Conditions
- 22 EU DECLARATION OF CONFORMITY
- 23 WEEE
- 24 Documents / Resources
 - 24.1 References
- 25 Related Posts





Product Information

The SP112 is a smart socket that allows you to control your devices remotely using the Gosund App. It has a rated voltage of 230V, a rated current of 16A (Max), and an AC frequency of 50/60Hz. The socket also features a USB port with a current of 2.1A Max and a WiFi frequency of 2.4GHz. The ON/OFF button can be used as a restore button, pressing and holding the button changes the flashing speed and will restore your smart socket to factory settings.

Product Package

The product user guide contains product features, instructions on how to use the product, and the operating procedure. Keep this manual for future reference.

Download the Gosund App

To control your smart socket, you need to download the Gosund App on your mobile device that supports iOS 8.0 and above or Android 4.4 and above. You can search Gosund and download the Gosund App on the App Store or Google Play, or scan the QR code provided in the manual.

Connecting the Socket with the App

You can connect your smart socket to the Gosund App using either Easy Mode or AP Mode.

Easy Mode

1. Choose to Add Device or the + at the upper right corner.
2. Choose Electrical Outlet.
3. Make sure the indicator light is rapidly flashing, and press Confirm.
4. Enter your home WiFi code. Make sure it is correct.
5. Wait for the connection to complete fully.
6. Connection established, you can now rename the plug.

AP Mode

1. Press Add Device or the +, and choose Electrical Outlet and AP Mode (upper right corner).

2. Press and hold the on/off button of the socket for 10 seconds. Make sure that the indicator light is slowly flashing, then confirm.
3. Choose your home WiFi, enter your password, and confirm.
4. Tap Connect now.
5. Choose the WiFi hotspot named Smartlife-XXX in your WiFi settings.
6. Go back to the Gosund application. It will display the Connecting Now prompt. Wait until the connection is fully established.
7. Connection established, you can now rename the plug.

Getting to Know the Gosund App

The Gosund App allows you to add and manage devices, create scenes, and manage your personal information.

Devices

You can add listed devices by tapping the + at the top of the page. Switches allow you to turn your device on/off in your home. Tap the icon in the upper right corner of the page, you will be able to modify the device name or create a group if you have several.

Scenes

With this function, you can create your own characteristics.

Profile

The profile is the way for the users to manage personal information.

Safety Information

The device is recommended for use indoors and in a dry location only, the power outlet shall be used within its published outlet rating on the instructions. Please contact the seller for replacement if there is any damage caused by transportation. Please plug in the socket in proper condition and away from children. Please plug in the socket fully while in use for safety concerns. Please do not disassemble or install the socket, as product damage or security risks may occur.

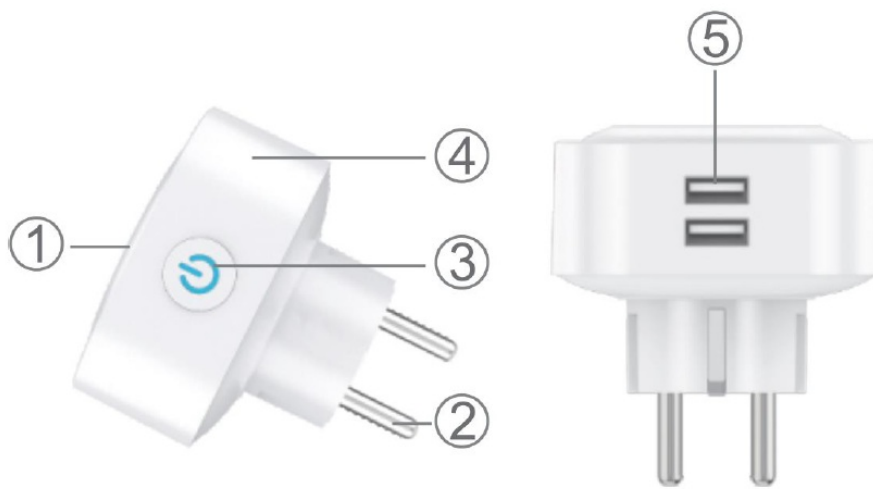
The product user guide contains product features, instructions on how to use the product, and the operating procedure. Read the user manual carefully to get the best experience and avoid unnecessary damage. Keep this manual for future reference. If you have any questions or comments about the device, please contact the customer line.

www.alza.co.uk/kontakt

+44 (0)203 514 4411

Alza.cz a.s., Jankovcova 1522/53, 170 00 Prague 7, www.alza.cz

Product Package



1. Socket Panel
2. Power Plug
3. ON/OFF Button
4. Flame Resistant Material
5. USB Port × 2

Note: The ON/OFF button can be used as a restore button, pressing and holding the button changes flashing speed and will restore your smart socket to factory settings. Only do this if you are sure that you wish to erase all your settings.

Parameters

Model Number: SP112

Rated Voltage: 230V

Rated Current: 16A (Max)

AC Frequency: 50/60Hz

USB Port Current: 2.1A Max

WiFi Frequency: 2.4GHz

Download the Gosund App

1. Search “Gosund” and download the Gosund App on the App Store or Google Play, or scan the QR code below and install.
2. Enter the register/log-in interface, and input the phone number for getting the verification code to register an account.

The free app “Gosund” is compatible with mobile devices that support iOS 8.0 and above or Android 4.4 and above.



Connecting the Socket with App

1. Use only the official “Gosund” app and create a Gosund account.
2. Choose 2.4G WiFi for the first connection.
3. There are two modes to choose from: Easy Mode and AP Mode. Easy mode is recommended, but if you cannot connect using it, choose AP Mode.

Easy Mode

1. Choose “**Add Device**” or the “+” at the upper right corner.
2. Choose “**Electrical Outlet**”.
3. Make sure the indicator light is rapidly flashing, press “**Confirm**”.
4. Enter your home WiFi code. Make sure it is correct.
5. Wait for the connection to complete fully.
6. Connection established, you can now rename the plug.

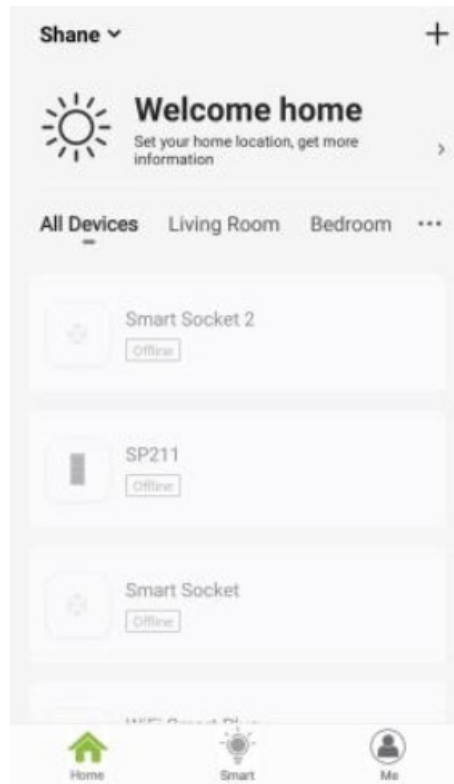
AP Mode

1. Press “**Add Device**” or the “+”, choose “Electrical Outlet” and “AP Mode” (upper right corner).
2. Press and hold the on/off button of the socket for 10 seconds. Make sure that the indicator light is slowly flashing, then confirm.
3. Choose your home WiFi, enter your password and confirm.
4. Tap “**Connect now**”.
5. Choose the WiFi hotspot named “**Smartlife-XXX**” in your WiFi settings.
6. Go back to the Gosund application. It will display the “**Connecting Now**” prompt. Wait until the connection is fully established.
7. Connection established, you can now rename the plug.

Getting to Know the Gosund App

Devices

You can add listed devices by tapping the “+” at the top of the page.



1. **Switches**

Switches allow you to turn your device on/off in your home. Tap the icon in the upper right corner of the page, you will be able to modify the device name or create a group if you have several devices, which means you can turn multiple devices on at the same time.

2. **Schedule**

Schedule the device “lights” to turn when you wake up or to automatically turn on when you get home. Turn devices on and off at different times to let people know that someone is home while you are away.

3. **Countdown**

With the countdown timer feature, you can automatically switch household appliances on/off.

4. **Electric Consumption**

You can check the real time and historical power consumption here if your device has a built-in energy monitoring function.



Scenes

With this function, you can create your own characteristics.

Profile

The profile is the way for the users to manage personal information.

Safety Information

The device is recommended for use indoors and in a dry location only, the power outlet shall be used within its published outlet rating on the instructions.

Please contact the seller for replacement if there is any damage caused by transportation.

Please plug in the socket in proper condition and away from children.

Please plug in the socket fully while in use for safety concerns. Please do not disassemble or install the socket, as product damage or security risks may occur.

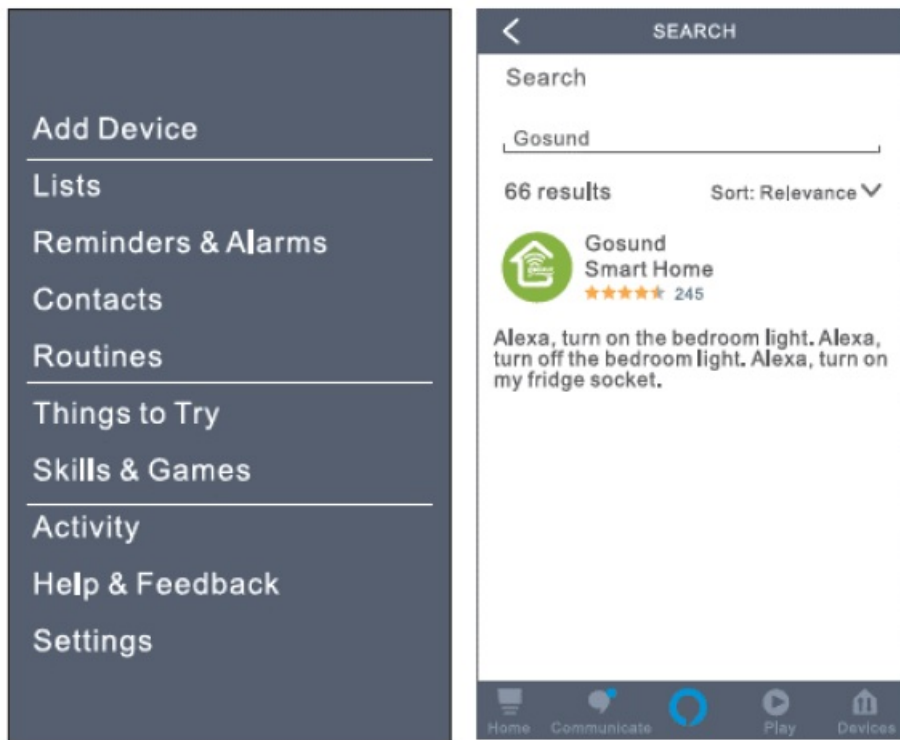
Using Amazon Echo

What You'll Need

Make sure your Echo dot is connected with your Amazon Alexa, and that you have a "Gosund" account.

Enable Our Skill in Alexa App

1. Log in your Amazon Alexa, choose "Skill" in the option bar, and then search for "Gosund" in the search bar.
Select "Gosund" in the search result, and then click enable.



Input the username and password that you have registered in the Gosund app. After you set the right page, your Alexa account will be connected with your Gosund account.

Control Smart Socket by Voice

1. After Alexa has been linked to your Gosund account, you can control the socket via Echo. To discover the device, simply say “Echo (or Alexa), discover my devices.”, or choose “Add Device” to discover the smart plug. Echo will start to search for the device that is added in the Gosund app. It will take approximately 20 seconds to show the result. Or you may click “Discover Device” on the Alexa app, it will show available devices.

Note: Echo is one of the wake-up names, the other two names are Alexa and Amazon.

2. Support Skill List

You can control devices by instructions, as shown below:

“**Alexa**, turn on/off [name of the smart socket].”

“**Alexa**, turn on lamp.”

“**Alexa**, turn off lamp.”

Note: The name of the device must be consistent with its name in the Gosund app. The name is recommended to use only easily pronounceable English words.

Warranty Conditions

A new product purchased in the Alza.cz sales network is guaranteed for 2 years. If you need repair or other services during the warranty period, contact the product seller directly, you must provide the original proof of purchase with the date of purchase.

The following are considered to be a conflict with the warranty conditions, for which the claimed claim may not be recognized:

- Using the product for any purpose other than that for which the product is intended or failing to follow the instructions for maintenance, operation and service of the product.

- Damage to the product by a natural disaster, the intervention of an unauthorized person or mechanically through the fault of the buyer (eg during transport, cleaning by inappropriate means, etc.).
- Natural wear and aging of consumables or components during use (such as batteries, etc.).
- Exposure to adverse external influences, such as sunlight and other radiation or electromagnetic fields, fluid intrusion, object intrusion, mains overvoltage, electrostatic discharge voltage (including lightning), faulty supply or input voltage and inappropriate polarity of this voltage, chemical processes such as used power supplies, etc.
- If anyone has made modifications, modifications, alterations to the design or adaptation to change or extend the functions of the product compared to the purchased design or use of non-original components.

EU DECLARATION OF CONFORMITY

Importer identification data:

Alza.cz a.s.

Registered office: Jankovcova 1522/53, Holešovice, 170 00 Prague 7 IČO: 27082440

Subject of the declaration:

Name: Gosund WiFi Smart Plug

Model: SP112

The above product has been tested in accordance with the standard (s) used for demonstration in accordance with the essential requirements laid down in the Directive (s): Directive No. 2014/53 / EU

Directive No. 2011/65 / EU as amended by 2015/863 / EU

Prague, 27.11.2020






WEEE

This product must not be disposed of as normal household waste in accordance with the EU Directive on Waste Electrical and Electronic Equipment (WEEE – 2012/19 / EU). Instead, it shall be returned to the place of purchase or handed over to a public collection point for the recyclable waste. By ensuring this product is disposed of correctly, you will help prevent potential negative consequences for the environment and human health, which could otherwise be caused by inappropriate waste handling of this product. Contact your local authority or the nearest collection point for further details. Improper disposal of this type of waste may result in fines in accordance with national regulations.

Documents / Resources

 <p>SP112</p> <p><small>User Manual • Uživatelský manuál • Utvratniskij manual • Παρουσίαση οπτικά • Benutzeroanleitenduch</small></p>	<p>Gosund SP112 Smart Socket [pdf] User Manual</p> <p>SP112 Smart Socket, SP112, Smart Socket, Socket</p>
---	---

References

-  [Alza.sk – rýchly a pohodlný nákup odkiaľkoľvek | alza.sk](https://alza.sk)
-  alza.at
-  alza.co.uk
-  alza.de
-  alza.hu

-  alza.sk

[Manuals+](#), [home](#) [privacy](#)