




[Home](#) » [gosund](#) » **gosund SP1 Smart Socket User Manual** 

gosund SP1 Smart Socket



Contents [[hide](#)]

- [1 Important Information](#)
- [2 Product Package](#)
- [3 At a Glance](#)
- [4 Install the LED USB Light Strip](#)
- [5 Download the GHome App](#)
- [6 Connecting the Socket with App](#)
- [7 Getting to Know the GHome App](#)
- [8 Safety Information](#)
- [9 Using Amazon Echo](#)
- [10 Connecting with Google Home](#)
- [11 Warranty Conditions](#)
- [12 Eu Declaration of Conformity](#)
- [13 Weee](#)
- [14 Customer Support](#)
- [15 Documents / Resources](#)
 - [15.1 References](#)

Important Information

The product user guide contains product features, instructions on how to use the product, and the operating procedure. Read the user manual carefully to get the best experience and avoid unnecessary damage. Keep this manual for future reference. If you have any questions or comments about the device, please contact the customer line.

Product Package

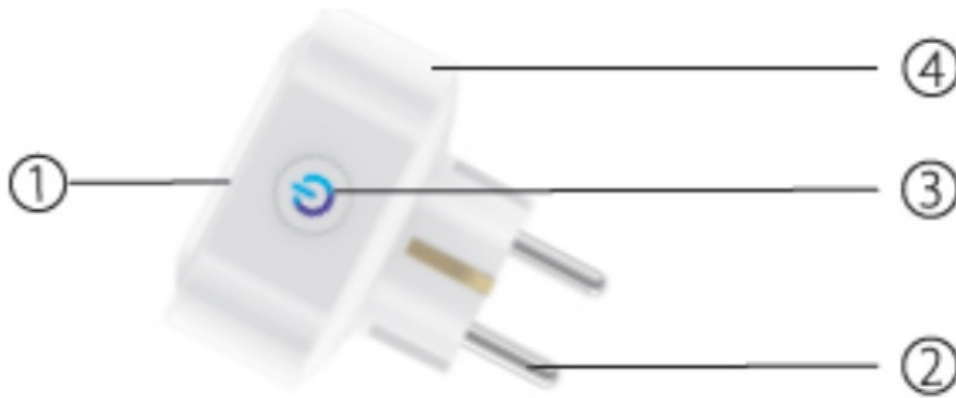
- 1. WiFi Smart Plug × 1
- 2. User Manual × 1

At a Glance

- 1. Socket Panel
- 2. Power Plug

3. ON/OFF Button

4. Flame Resistant Material



Note: The ON/OFF button can be used as a restore button, pressing and holding the button changes flashing speed and will restore your smart socket to factory settings. Only do this if you are sure that you wish to erase all your settings.

Install the LED USB Light Strip

Model Number: SP1

Rated Voltage: 230V

Rated Current: 16A (Max)

AC Frequency: 50/60Hz

Working Temperature: -20~45°C

WiFi Frequency: 2.4GHz

Download the GHome App

1. Search “GHome” and download the GHome App on the App Store or Google Play, or scan the QR code below and install.
2. Enter the register/log in interface, input the phone number for getting the verification code to register an account.
3. The free app “GHome” is compatible with mobile devices that support iOS 8.0 and above or Android 4.4 and above.



Connecting the Socket with App

A. Easy Mode (Recommended)

1. Please make sure the mini socket has connected with electricity at the beginning, then open the Gosund app, tap the “ADD DEVICES” or the “+” on the upper right corner of the page and select “Electrical outlet”.
2. Press and hold the on/off button of the device for 5 seconds until the indicator light starts to flash quickly, the interface page has already switched to “Add Device” page.
3. Make sure the indicator light is now rapidly flashing and confirm this in the app.
4. Choose the local WiFi, enter the correct password and confirm.
5. Wait for successful configuration, then tap “Done”.

B. AP Mode

1. Please switch to “AP Mode” if the connection fails in “Easy Mode”.
2. Press and hold the on/off button until the indicator light flashes slowly.
3. Make sure the indicator light is flashing slowly, confirm in the app.
4. Choose your 2.4G WiFi, enter your password and confirm in the app.
5. Tap “Connect now” and choose the WiFi hotspot named “Smartlife-XXX”, then go back to the SmartLife application.
6. Finally, wait for the product to successfully configure and tap “Completed”.

Note: If the connection fails in “AP Mode”, please check if your router utilizes dual-band WiFi. If it does, please enter the router management interface to split 2.4G and 5G with WiFi, and then connect 2.4G WiFi.

Getting to Know the GHome App

A. Devices

You can add listed devices by tapping the “+” at the top of the page.

Switches

Switches allow you to turn your device on/off anywhere.

As long as you have an internet connection, you can control the device in your home.

Tap the icon at the upper right of the page, you are able to modify the device name or even create a group (if you have several devices), which means you can turn multiple devices on or off at the same time.

Timer

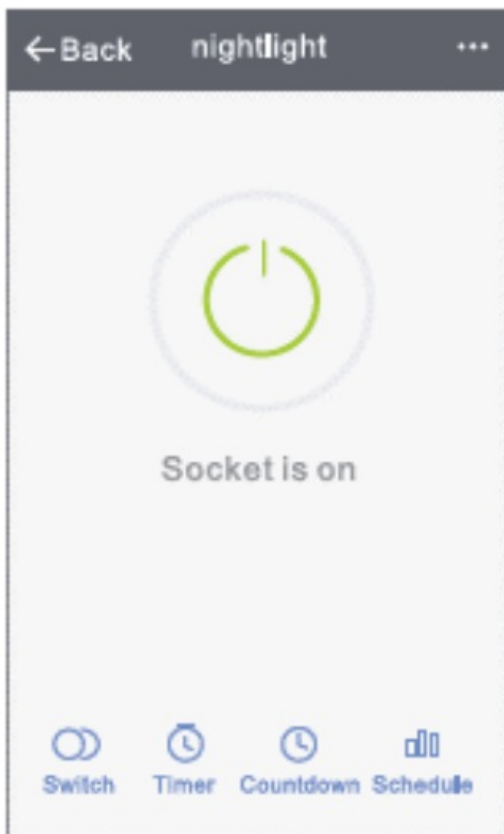
Schedule the device “lights” to turn on when you wake up or to automatically turn on when you get home. Turn devices on and off at different times to let people know that someone is home while you are away.

Countdown

You can set the device to turn on or off at specific times with this function.

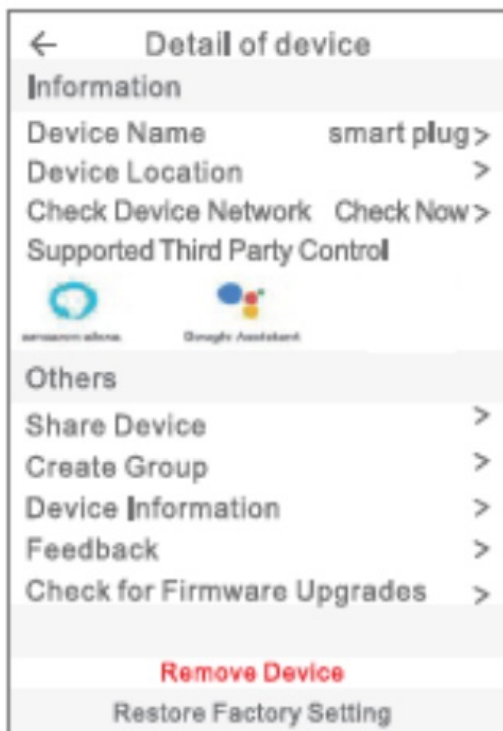
Statistics

You can check the real-time and historical power consumption here if your device has a built in energy monitoring function.



B. Scenes

1. Touch the top right icon to adjust the characteristics of the device to your liking.
2. You can change the name of the device, and choose to control the device by third-party devices, such as Amazon Alexa, or Google Home.
3. You can share the device to your family or create a group to help you control your devices at home.
4. Using the scenes, you can choose to remove the device or to restore the factory settings.



Safety Information

The device is recommended for use indoors and in a dry location only, the power outlet shall be used within its published outlet rating on the instructions.

Please contact the seller for replacement if there is any damage caused by transportation.

Please plug in the socket in proper condition and away from children.

Please plug in the socket fully while in use for safety concerns.

Please do not disassemble or install the socket, as product damage or security risks may occur.

Using Amazon Echo

What You'll Need

- Amazon Alexa App & Account
- GHome App & Account (Users need to register your own account, select region as "United States").

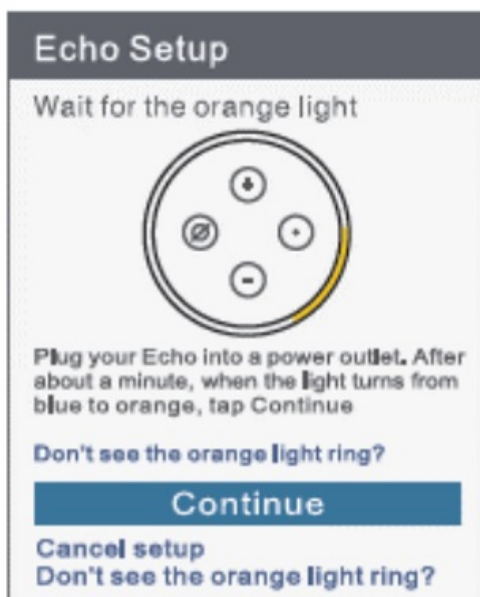
- Echo, Echo Dot, Tap or other Amazon voice operated devices
- Mini Smart Socket

Tip: Rename the device after configuring successfully, the name of the device is recommended to use easily pronounceable words from the English language.

Set Up Your Echo Speaker in Alexa APP

1. Sign in with your Alexa account & password (if not registered, sign up first). After logging in, click the menu at the top left, then click “Settings“, and choose “Set up a new device“.
2. Choose a device (for example, Echo). When the right page appears, press and hold the small dot on your Echo device until the light turns yellow. Afterwards, press “Continue“ on app.

Note: at this time, the mobile phone cannot open on a variety of VPN software.

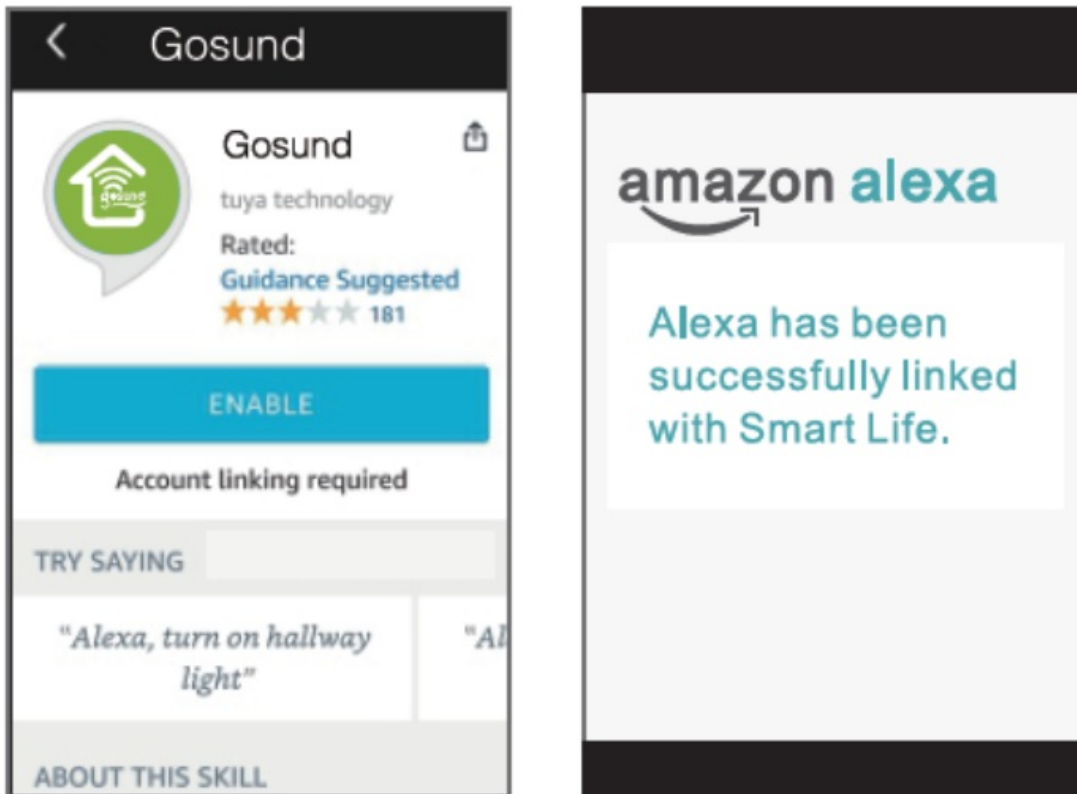


3. Choose users' WiFi and wait for a few minutes.
4. After an introduction video, click next step, you will be redirected to the Home Page automatically. The Echo is now connected to the Alexa app through WiFi.

Enable Our Skill in Alexa App

1. Click “Skills” in the options bar, and then search for “GHome” in the search bar. Select “GHome” in the search results, and then press “Enable”.
2. Input the username and password that you have registered with. When you see the

right page, it means that the Alexa account has been successfully linked with your Smart Life account.



Control Smart Socket by Voice

After completing the previous operation has been completed, you can control the light strip via Echo.

1. To discover the device, simply say "Echo (or Alexa), discover my device."
Echo will start to search for the device that is added in the GHome app. It will take approximately 20 seconds to show the result. Or you may click "Discover Device" on the Alexa app, it will show available devices.

Note: Echo is one of the wake-up names, the other two names are Alexa and Amazon.

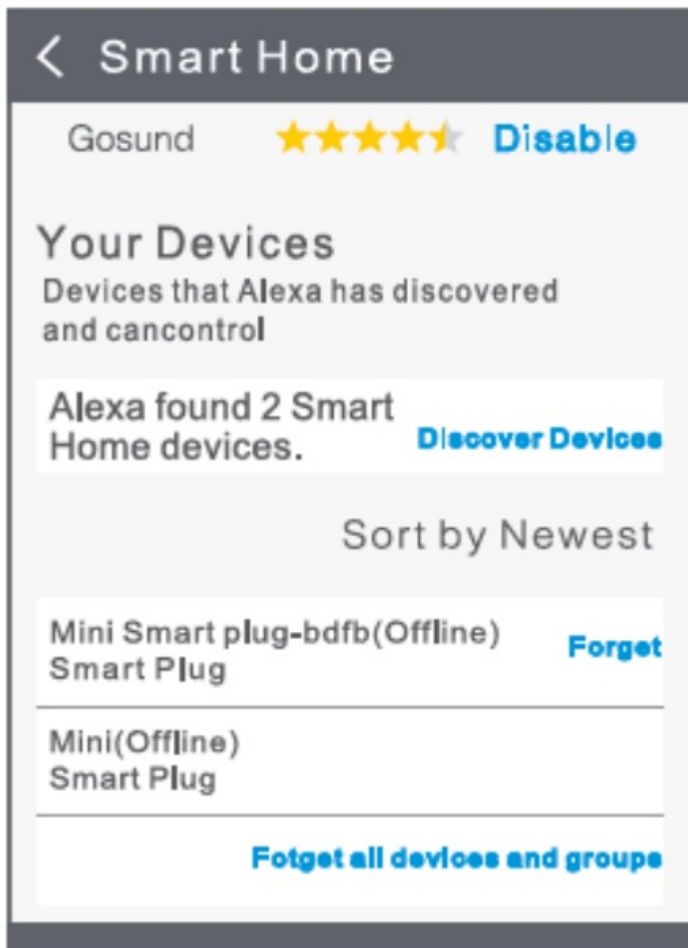
Support Skill List

You can control devices by instructions, as shown below:

"Alexa, turn on the [fridge socket]."

"Alexa, turn off the [fridge socket]."

Attention: The name of the device must be consistent with its name in the GHome app.



Connecting with Google Home

You can do this by linking the GHome app with the Google Home app. In the Google Home app, go to “Works with Google” → Search for “GHome” → Enter your GHome account credentials → Authorize. The Google Home app will now guide you through the rest of the steps.



Warranty Conditions

A new product purchased in the Alza.cz sales network is guaranteed for 2 years. If you need repair or other services during the warranty period, contact the product seller directly, you must provide the original proof of purchase with the date of purchase.

The following are considered to be a conflict with the warranty conditions, for which the claimed claim may not be recognized:

- Using the product for any purpose other than that for which the product is intended or failing to follow the instructions for maintenance, operation and service of the product.
- Damage to the product by a natural disaster, the intervention of an unauthorized person or mechanically through the fault of the buyer (eg during transport, cleaning by inappropriate means, etc.).
- Natural wear and aging of consumables or components during use (such as batteries, etc.).
- Exposure to adverse external influences, such as sunlight and other radiation or electromagnetic fields, fluid intrusion, object intrusion, mains overvoltage, electrostatic discharge voltage (including lightning), faulty supply or input voltage and inappropriate polarity of this voltage, chemical processes such as used power supplies, etc.

- If anyone has made modifications, modifications, alterations to the design or adaptation to change or extend the functions of the product compared to the purchased design or use of non-original components.

Eu Declaration of Conformity

Importer identification data:

Alza.cz a.s.

Registered office: Jankovcova 1522/53, Holešovice, 170 00

Prague 7

IČO: 27082440

Subject of the declaration:

Name: Gosund Smart Plug

Model: SP1

CE The above product has been tested in accordance with the standard (s) used for demonstration in accordance with the essential requirements laid down in the Directive (s):

Directive No. 2014/53 / EU

Directive No. 2011/65 / EU as amended by 2015/863 / EU

Prague, 27.11.2020

Weee



This product must not be disposed of as normal household waste in accordance with the EU Directive on Waste Electrical and Electronic Equipment (WEEE – 2012/19 / EU). Instead, it shall be returned to the place of purchase or handed over to a public collection point for the recyclable waste. By ensuring this product is disposed of correctly, you will help prevent potential negative consequences for the environment and human health, which could otherwise be caused by inappropriate waste handling of this product. Contact your local authority or the nearest collection point for further details.

Improper disposal of this type of waste may result in fines in accordance with national regulations.

Customer Support

www.alza.co.uk/kontakt


+44 (0)203 514 4411

Alza.cz a.s., Jankovcova 1522/53, 170 00 Prague 7,

www.alza.cz



Documents / Resources

 SP1 <small>User Manual • Uživatelský manuál • Uživatelský manuál • Benutzerhandbuch</small>	gosund SP1 Smart Socket [pdf] User Manual SP1 Smart Socket, SP1, Smart Socket, Socket
--	--

References

- [User Manual](#)

💎 gosund, Smart Socket, Socket, SP1, SP1 Smart

📁 gosund Socket

Leave a comment

Your email address will not be published. Required fields are marked *

Comment *

Name

Email

Website

☐ Save my name, email, and website in this browser for the next time I comment.

Post Comment

Search:

e.g. whirlpool wrf535swhz

Search

[Manuals+](#) | [Upload](#) | [Deep Search](#) | [Privacy Policy](#) | [@manuals.plus](#) | [YouTube](#)

This website is an independent publication and is neither affiliated with nor endorsed by any of the trademark owners. The "Bluetooth®" word mark and logos are registered trademarks owned by Bluetooth SIG, Inc. The "Wi-Fi®" word mark and logos are registered trademarks owned by the Wi-Fi Alliance. Any use of these marks on this website does not imply any affiliation with or endorsement.