



gosund G2 Mini Bluetooth Gateway User Manual

[Home](#) » [gosund](#) » gosund G2 Mini Bluetooth Gateway User Manual 

Contents

- 1 [gosund G2 Mini Bluetooth Gateway](#)
- 2 [Specifications](#)
- 3 [Product Usage Instructions](#)
- 4 [Warranty Conditions](#)
- 5 [FAQ](#)
- 6 [Diagram](#)
- 7 [Specification](#)
- 8 [Checklist Before Usage](#)
- 9 [How to Set Up](#)
 - 9.1 [Power Up the Gateway](#)
 - 9.2 [Additional Configuration Steps](#)
- 10 [Supplementary Details](#)
- 11 [Warranty Conditions](#)
- 12 [EU Declaration of Conformity](#)
- 13 [WEEE](#)
- 14 [Documents / Resources](#)
 - 14.1 [References](#)
- 15 [Related Posts](#)



gosund G2 Mini Bluetooth Gateway



Specifications

- **Size:** Micro USB
- **Input:** Bluetooth
- **Operating Temperature:** Not specified
- **Operating Humidity:** Not specified
- **Storage Temperature:** Not specified
- **Storage Humidity:** Not specified

Product Usage Instructions

Checklist Before Usage

1. Ensure that your smartphone is connected to a Wi-Fi network operating at 2.4 GHz.
2. Enter the correct Wi-Fi password as required.
3. Your smartphone should be running at least Android version 4.4 or iOS version 8.0.
4. If the number of devices connected to your Wi-Fi router has reached its limit, consider disabling some devices to free up a channel, or connect to a different Wi-Fi router.

How to Set Up

1. Download the App: Use your smartphone to scan the QR code provided, or search for the gosund app in the Google Play Store or Apple App Store. Download and install the app onto your smartphone.
2. Create an Account: Open the app and follow the prompts to create a new account. You will need to provide your mobile number and a verification code that will be sent to you for authentication.
3. Connect to Wi-Fi: Connect your smartphone to your home Wi-Fi network. Open the app and tap the + icon in the upper right corner of the home screen or select Add Device.
4. Power Up the Gateway: Connect the mini Bluetooth gateway to power using the included Micro USB charging cable.

Bluetooth mode:

Activate Bluetooth: Enable Bluetooth on your smartphone. The app will automatically search for nearby devices. When the gateway appears, select it, and enter your Wi-Fi network name (SSID) and password. The app will connect to the gateway automatically.

Wi-Fi mode:

1. Switch to Wi-Fi Mode: In the app, select Wireless Gateway (BLE) from the Gateway Control menu, then choose Wi-Fi Mode.
2. Ensure that the blue indicator on the gateway is on and that the red indicator is flashing slowly.
3. Enter your Wi-Fi network name and password. If prompted, connect your mobile device to the gateway's Wi-Fi network, typically named SmartLife-XXXX.
4. Return to the main app interface, and the connection will be established.

Supplementary details

- **Operational Frequency Range:** The device operates within a frequency spectrum of 2400 to 2483.5 MHz.
- **Maximum Transmission Power:** For both Wi-Fi and Bluetooth connectivity, the device has a peak transmitting power capacity of 20 decibels-milliwatts (dBm).

Warranty Conditions

A new product purchased in the Alza.cz sales network is guaranteed for 2 years. If you need repair or other services during the warranty period, contact the product seller directly. You must provide the original proof of purchase with the date of purchase.

FAQ

What should I do if I encounter connection issues during setup?

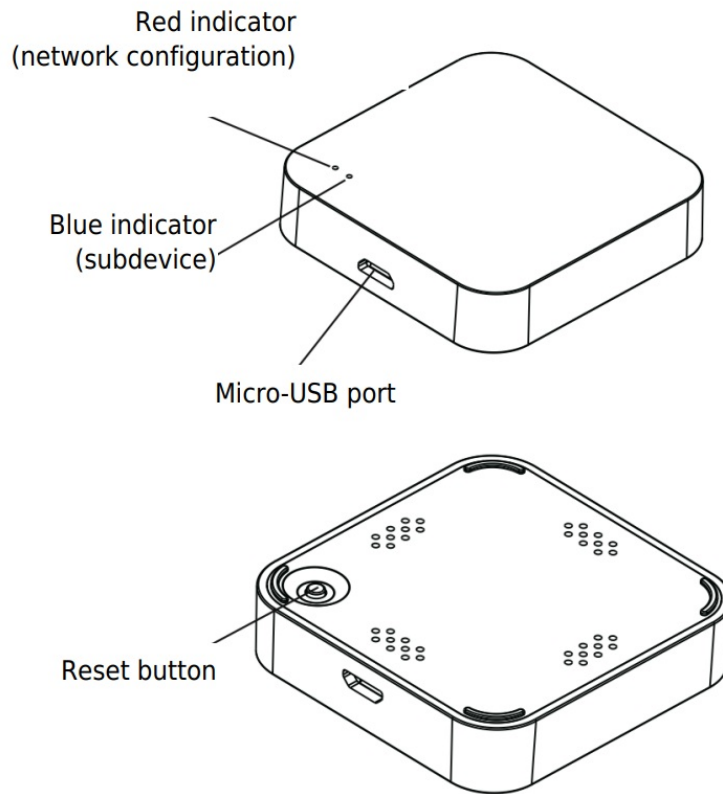
If you encounter connection issues during setup, ensure that your smartphone is properly connected to a 2.4 GHz Wi-Fi network, and double-check that you have entered the correct Wi-Fi password. Restarting the setup process or rebooting the device may also help resolve connectivity problems.

Dear customer,

Thank you for purchasing our product. Please read the following instructions carefully before first use and keep this user manual for future reference. Pay particular attention to the safety instructions. If you have any questions or comments about the device, please contact the customer line.

- www.alza.co.uk/kontakt
- +44 (0)203 514 4411
- Alza.cz a.s., Jankovcova 1522/53, Holešovice, 170 00 Praha 7, www.alza.cz

Diagram



Specification

- **Size** 50 × 50 × 11 mm
- **Micro-USB Input** DC 5V / 1A
- **Bluetooth** Low-power 4.2
- **Operating Temperature** 0°C – 50°C
- **Operating Humidity** 10% – 85% RH
- **Storage Temperature** 0°C – 70°C
- **Storage Humidity** 5% – 95% RH

Checklist Before Usage

1. Ensure that your smartphone is connected to a Wi-Fi network operating at 2.4 GHz.
2. Enter the correct Wi-Fi password as required.
3. Your smartphone should be running at least Android version 4.4 or iOS version 8.0.
4. If the number of devices connected to your Wi-Fi router has reached its limit, consider disabling some devices to free up a channel, or connect to a different Wi-Fi router.

How to Set Up

Download the App:

- Use your smartphone to scan the QR code provided, or search for the “gosund” app in the Google Play Store or Apple App Store.
- Download and install the app onto your smartphone.

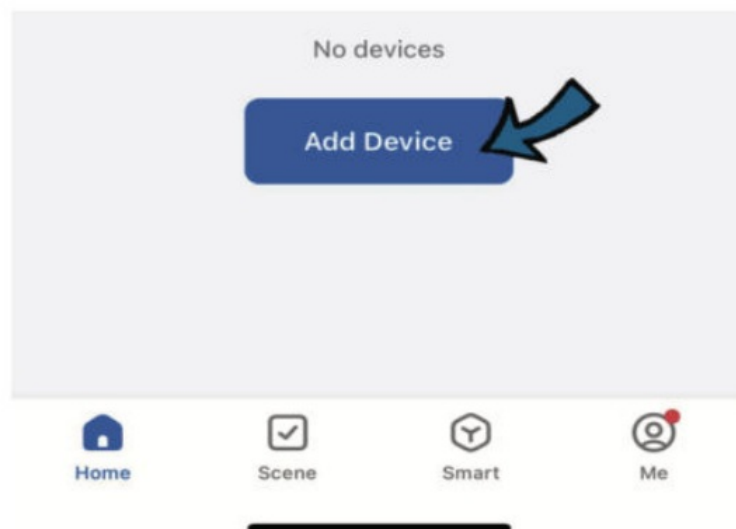


Create an Account:

- Open the app and follow the prompts to create a new account.
- You will need to provide your mobile number and a verification code that will be sent to you for authentication.

Connect to Wi-Fi:

- Connect your smartphone to your home Wi-Fi network.
- Open the app and tap the “+” icon in the upper right corner of the home screen or select “Add Device.”

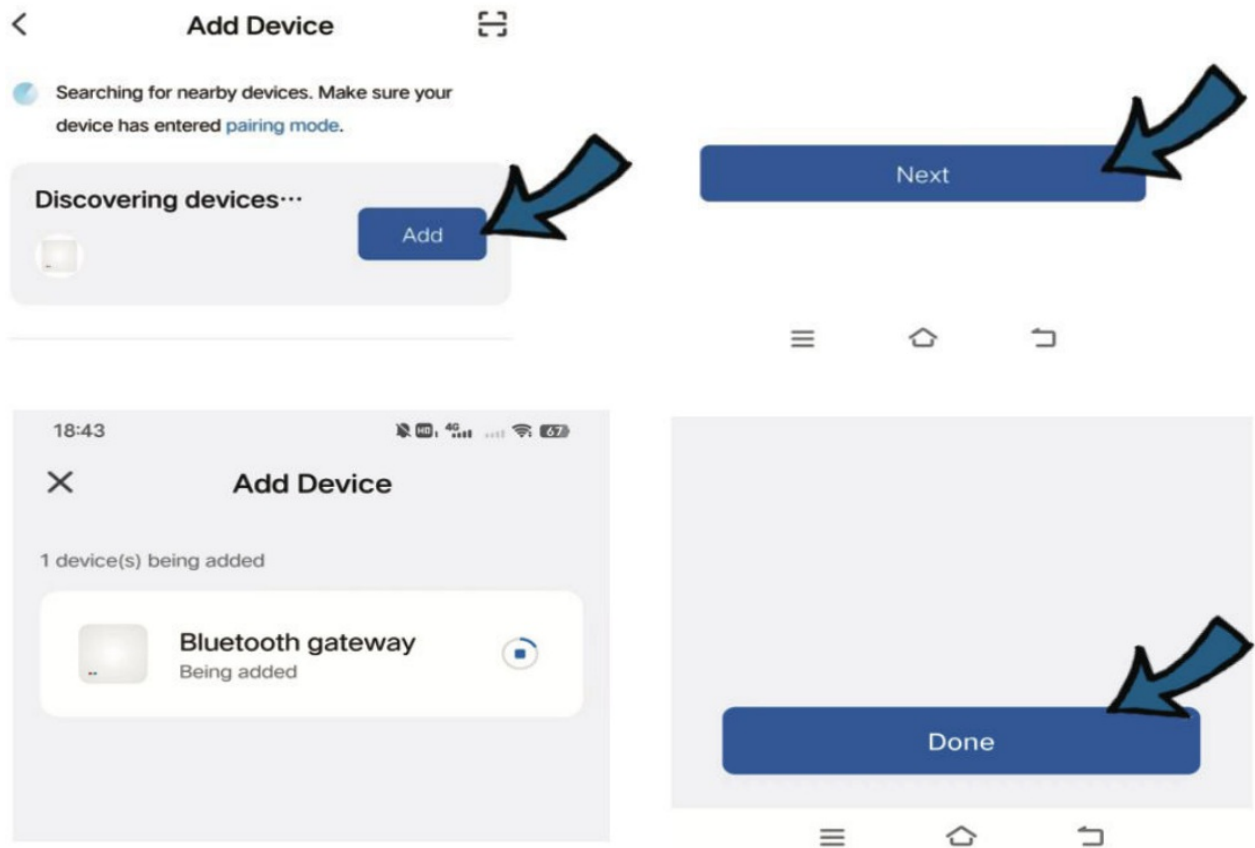


Power Up the Gateway

Connect the mini Bluetooth gateway to power using the included Micro USB charging cable.

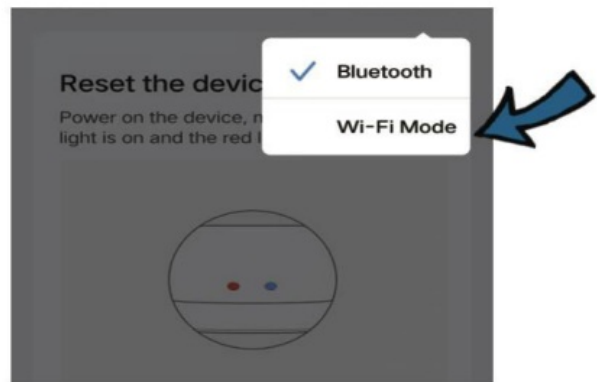
• Bluetooth Mode:

- Enable Bluetooth on your smartphone.
- The app will automatically search for nearby devices.
- When the gateway appears, select it, and enter your Wi-Fi network name (SSID) and password.
- The app will connect to the gateway automatically.

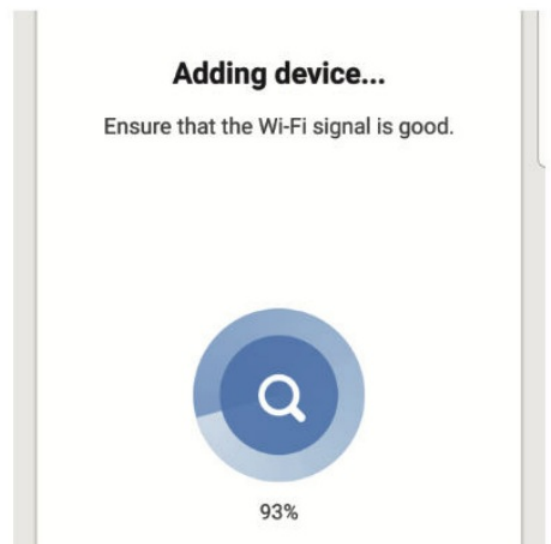
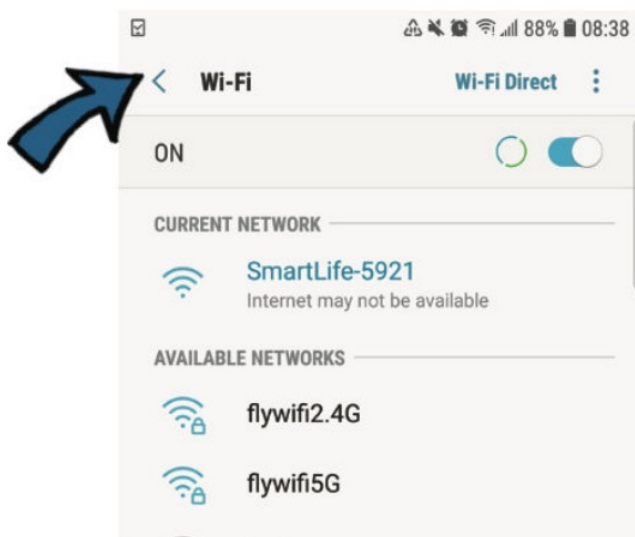
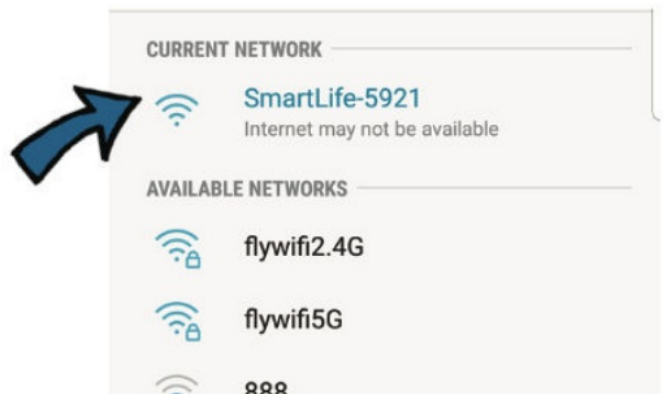
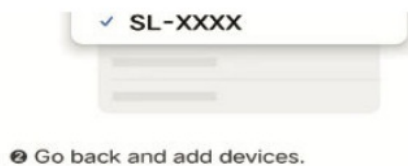
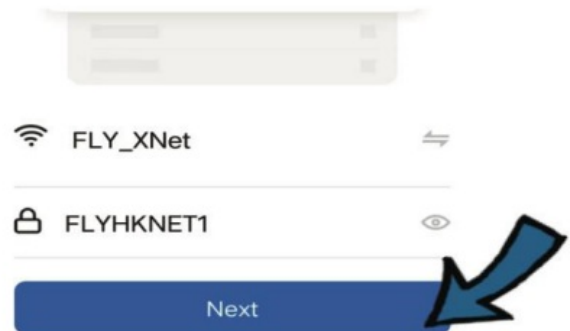
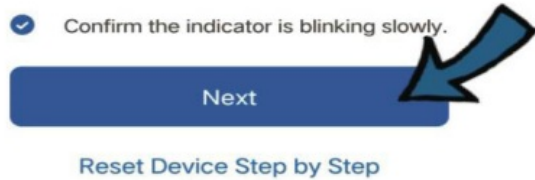


- **Wi-Fi Mode:**

- In the app, select "Wireless Gateway (BLE)" from the "Gateway Control" menu, then choose "Wi-Fi Mode."
- Ensure that the blue indicator on the gateway is on and that the red indicator is flashing slowly.
- Enter your Wi-Fi network name and password.
- If prompted, connect your mobile device to the gateway's Wi-Fi network, typically named "SmartLife-XXXX."
- Return to the main app interface, and the connection will be established.



Power on the device, make sure the blue light is on and the red light is blinking.



Additional Configuration Steps

Add a New Device:

- In the app, tap the “+ Add Device” button.
- Verify that the LED indicator on the device you wish to add (referred to as the subdevice) is blinking, which indicates it's in pairing mode.
- The app will commence a search for the subdevice and should detect it automatically.

Device Integration:

- Once the app has successfully added the subdevice, it will appear in your device list.
- You can now begin monitoring and remotely controlling the subdevice through the app.

Supplementary Details

- **Operational Frequency Range:** The device operates within a frequency spectrum of 2400 to 2483.5 MHz.
- **Maximum Transmission Power:** For both Wi-Fi and Bluetooth connectivity, the device has a peak transmitting power capacity of 20 decibels-milliwatts (dBm).

Warranty Conditions

A new product purchased in the Alza.cz sales network is guaranteed for 2 years. If you need repair or other services during the warranty period, contact the product seller directly, you must provide the original proof of purchase with the date of purchase.

The following are considered to be a conflict with the warranty conditions, for which the claimed claim may not be recognized:

- Using the product for any purpose other than that for which the product is intended or failing to follow the instructions for maintenance, operation, and service of the product.
- Damage to the product by a natural disaster, the intervention of an unauthorized person or mechanically through the fault of the buyer (e.g., during transport, cleaning by inappropriate means, etc.).
- Natural wear and aging of consumables or components during use (such as batteries, etc.).
- Exposure to adverse external influences, such as sunlight and other radiation or electromagnetic fields, fluid intrusion, object intrusion, mains overvoltage, electrostatic discharge voltage (including lightning), faulty supply or input voltage and inappropriate polarity of this voltage, chemical processes such as used power supplies, etc.
- If anyone has made modifications, modifications, alterations to the design or adaptation to change or extend the functions of the product compared to the purchased design or use of non-original components.

EU Declaration of Conformity

This equipment is in compliance with the essential requirements and other relevant provisions of EU directives.






WEEE

This product must not be disposed of as normal household waste in accordance with the EU Directive on Waste Electrical and Electronic Equipment (WEEE – 2012/19 / EU). Instead, it shall be returned to the place of purchase or handed over to a public collection point for the recyclable waste. By ensuring this product is disposed of correctly, you will help prevent potential negative consequences for the environment and human health, which could otherwise be caused by inappropriate waste handling of this product. Contact your local authority or the nearest collection point for further details. Improper disposal of this type of waste may result in fines in accordance with national regulations.

Documents / Resources

	gosund G2 Mini Bluetooth Gateway [pdf] User Manual G2 Mini Bluetooth Gateway, G2, Mini Bluetooth Gateway, Bluetooth Gateway, Gateway
---	---

References

-  [alza.at](#)
-  [Alza | Alza.co.uk](#)
-  [alza.de](#)
-  [alza.hu](#)
-  [alza.sk](#)
- [User Manual](#)

[Manuals+](#), [Privacy Policy](#)

This website is an independent publication and is neither affiliated with nor endorsed by any of the trademark owners. The "Bluetooth®" word mark and logos are registered trademarks owned by Bluetooth SIG, Inc. The "Wi-Fi®" word mark and logos are registered trademarks owned by the Wi-Fi Alliance. Any use of these marks on this website does not imply any affiliation with or endorsement.