


Gosling Software v1.09 Can Slide Adjustment Settings User Guide

[Home](#) » [Gosling Software](#) » Gosling Software v1.09 Can Slide Adjustment Settings User Guide 

Contents

- 1 [Gosling Software v1.09 Can Slide Adjustment Settings](#)
- 2 [Product Information](#)
- 3 [Product Usage Instructions](#)
- 4 [Gosling Software v1.09+ Can Slide Adjustment Setting](#)
- 5 [Documents / Resources](#)
- 6 [Related Posts](#)

Gosling Software

Gosling Software v1.09 Can Slide Adjustment Settings

About

Run

System

Stats

Seamer

Lid

Filler

Can Slide Maintenance

Can Style Selection

Delay Times (in seconds)

Can Gripper Ext/Ret Time:0.500

Station Speeds (percent)

To Fill Head:100

To DO Hood:15

Through Lid Dropper:15

To Seamer:40

MANUAL MODE

STOPPED

Can Slide Not Homed

Can Slide Ready

FAULT/WARNING DETAILS

User Login

Login

Product Information

The Gosling Software v1.09+ is a software application designed to provide slide adjustment settings for the Can Slide feature.

Product Usage Instructions

1. Open the Gosling Software v1.09+ on your computer.
2. Navigate to the Can Slide Maintenance Page (refer to Figure 1).
3. Locate the Can Slide Adjustment Settings section.
4. Adjust the settings according to your preferences.
5. Save the changes made to the Can Slide Adjustment Settings.

Gosling Software v1.09+ Can Slide Adjustment Setting

The purpose of this procedure is to educate the operator on the new settings in software versions 1.09 and later to control can slide speeds. Note that the settings in figure 1 are the default settings.

Navigate to the Can Slide Maintenance page by clicking on the Can Slide button, once the page loads press the Can Slide button again to reveal the pull-down menu and the Can Slide Maintenance button (see figure 1).

Settings and descriptions

DELAY TIMES (in seconds)

Can Gripper Ext/Ret Time:

This delay will control how much time the system will wait before the can slide begins to move the can toward the seamer after the fill cycle is complete.

If the delay is too short, the can slide will move before the can is fully gripped and may cause issues with loss of product/damaged cans.

The screenshot displays the 'Can Slide Maintenance' page within the Gosling Software v1.09+ interface. At the top, a navigation bar includes buttons for 'About', 'Run', 'System', 'Stats', 'Seamer', 'Lid', 'Filler', 'Can Slide Maintenance' (which is highlighted), and 'Can Style Selection'. The main content area is divided into two sections. On the left, under the heading 'Delay Times (in seconds)', there is a table with one row: 'Can Gripper Ext/Ret Time:' with a value of '0.500'. On the right, under the heading 'Station Speeds (percent)', there is a table with four rows: 'To Fill Head:' (100), 'To DO Hood:' (15), 'Through Lid Dropper:' (15), and 'To Seamer:' (40). To the right of these tables, there is a vertical sidebar containing several buttons: 'MANUAL MODE' (orange), 'STOPPED' (red), 'Can Slide Not Homed' (red), 'Can Slide Ready' (red), 'FAULT/WARNING DETAILS' (light blue), and 'User Login' (light blue). Below the 'User Login' button is a 'Login' button.

Delay Times (in seconds)	
Can Gripper Ext/Ret Time:	0.500

Station Speeds (percent)	
To Fill Head:	100
To DO Hood:	15
Through Lid Dropper:	15
To Seamer:	40

Figure 1: Can Slide Maintenance Page

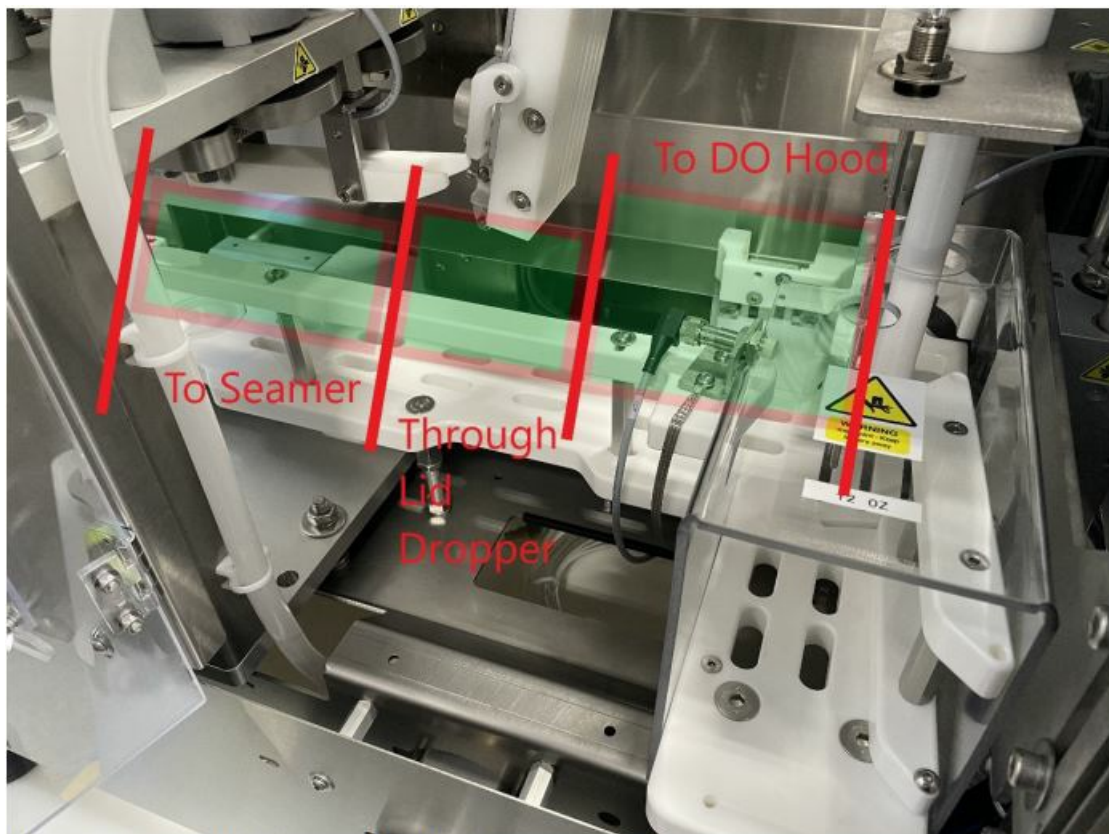


Figure 2: Can Slide Zones (DO Hood not pictured).

STATION SPEED (percent):

All of the settings under the Station Speed title are set as percentages (out of 100%) to control the speed of the can slide (and gripper) as it moves from the fill head to the seamer and back.

Reference Figure 2 for to see the can slide zones.

To Fill Head:

This should be set at '100' as it controls the speed at which the can gripper moves back to the filler after the seaming cycle is complete.

To DO Hood:

This will control the speed of the can slide (gripper) as it moves the can from the fill station to the end of the DO Hood (see figure 2).

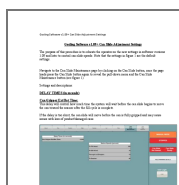
Through Lid Dropper:

This will control the speed of the can slide (gripper) as it moves the can from the end of the DO Hood to the gap between the lid dropper and hockey skate (see figure 2).

To Seamer:

This will control the speed of the can slide (gripper) as it moves the lidded can from the beginning of the hockey skate to the seamer station (see figure 2).

Documents / Resources



[Gosling Software v1.09 Can Slide Adjustment Settings](#) [pdf] User Guide

v1.09 Can Slide Adjustment Settings, v1.09, Can Slide Adjustment Settings, Slide Adjustment Settings, Adjustment Settings

