



GORILLA TOUGHLITE Engineered For Ultimate Flexibility Instruction Manual

[Home](#) » [Gorilla](#) » GORILLA TOUGHLITE Engineered For Ultimate Flexibility Instruction Manual 

Contents

- [1 GORILLA TOUGHLITE Engineered For Ultimate Flexibility](#)
- [2 Product Information](#)
- [3 Product Usage Instructions](#)
- [4 INSTRUCTION](#)
- [5 INSTALLATION INSTRUCTIONS FOR USE](#)
- [6 SAFETY WARNINGS](#)
- [7 Documents / Resources](#)
 - [7.1 References](#)
- [8 Related Posts](#)



GORILLA TOUGHLITE Engineered For Ultimate Flexibility



Product Information

Specifications

- Model: [Product Model]
- Dimensions: [Product Dimensions]
- Weight: [Product Weight]
- Material: [Product Material]
- Color: [Product Color]
- Working Pressure Range: [Working Pressure Range]
- Bursting Pressure: [Bursting Pressure]

Product Usage Instructions

Step 1: Locate the water supply outlet

Find a suitable water supply outlet to connect your hose to.

Step 2: Uncoil the hose

Remove the product from the package and completely uncoil it, starting with the male end. If there are any twists in the hose, manually eliminate them.

Step 3: Attach the hose to the water supply outlet

Screw the female end of the hose connector clockwise onto the water supply outlet until it is firmly seated.

Step 4: Attach a nozzle (optional)

If you are using a nozzle with the hose, attach it to the male end of the hose at this time.

Step 5: Enjoy your new hose!

Your hose is now ready to use. Enjoy watering your plants or any other activities that require water flow.

Safety Warnings

Please read and follow these safety warnings before using the product:

- Read and understand all instructions and warnings provided with the product.
- Improper use of the product can result in injury.
- Keep the product away from children and pets.
- Do not use the product with water temperatures exceeding [Max Temperature].
- Do not expose the product to direct sunlight for extended periods.
- Inspect the hose regularly for any signs of damage or wear. Replace if necessary.

FAQ

Q: Can I use this hose with hot water?

A: No, this hose is not suitable for use with water temperatures exceeding [Max Temperature].

Q: How long is the hose?

A: The length of the hose is [Hose Length].

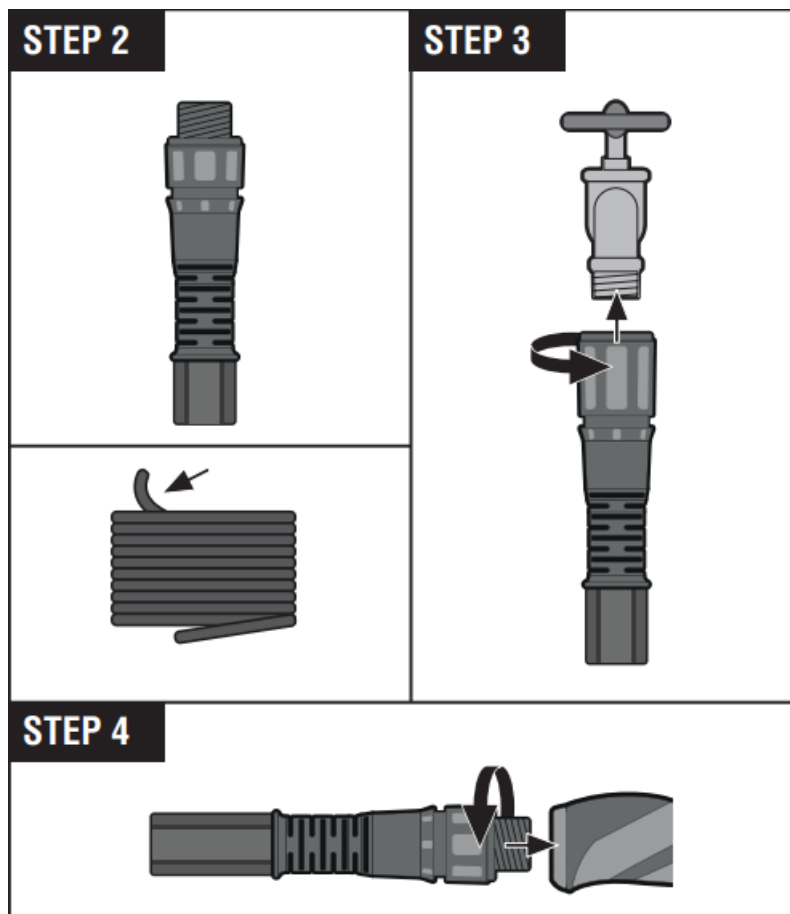
Q: Can I connect multiple hoses together?

A: Yes, you can connect multiple hoses together using suitable connectors.

INSTRUCTION

STEP 1





Important safety and installation instructions. Please read and follow all warnings and instructions before using this product. Injury can result from improper use.

Thank you for your purchase of the product!

Installing your new hose is as easy as 1-2-3

INSTALLATION INSTRUCTIONS FOR USE

Step 1: Locate the water supply outlet you would like to connect your hose to.

Step 2: Remove the product from the package and completely uncoil it starting with the male end. If necessary, manually eliminate any twists.

Step 3: Attach the female end of the product to the water supply outlet by screwing the connector clockwise until firmly seated.

Step 4: If using a nozzle with the product, attach it to the male end of the hose at this time.

Step 5: Enjoy your new hose!

SAFETY WARNINGS


- Our product is intended for outdoor watering applications only
- Not for hot water use
- Do not leave under pressure when not in use
- Do not leave unattended children to use the product
- Do not leave out on freezing temperatures

- Store indoors in winter
- For proper use, allow water to flush through the hose a few minutes before drinking
- Coupling protection: to avoid any kind of corrosion causing fusion between the faucet and the coupling on the hose, we suggest disconnecting and reconnecting the hose from any metal spigot a minimum of 3 times per year

OPTIMUM WORKING PRESSURE & BURSTING PRESSURE


- Optimum working pressure from 29 up to 100 psi
- Bursting pressure 350 psi



GORILLA and the  logo are trademarks of Tricam Industries, Inc. used under license. This product is covered by several issued and pending US and international patents, design patents, and trademarks owned by FITT S.p.A. For more information, please visit www.gorillamade.com/patents.

FITT USA Inc.
 Mooresville, NC 28117
 (833) 744-2753
hosesupport@gorillamade.com
www.gorillamade.com

Documents / Resources

	<p>GORILLA TOUGHLITE Engineered For Ultimate Flexibility [pdf] Instruction Manual TOUGHLITE, TOUGHLITE Engineered For Ultimate Flexibility, Engineered For Ultimate Flexibility, Ultimate Flexibility, Flexibility</p>
---	---

References

- [User Manual](#)