



## GoPro The Frame User Manual

[Home](#) » [Support](#) » GoPro The Frame User Manual 

### Contents

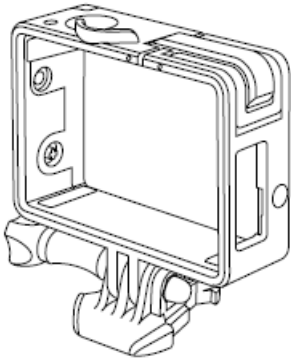
- [1 GoPro The Frame User Manual](#)
- [2 What's Included](#)
- [3 Setting up](#)
  - [3.1 JUST THE CAMERA](#)
  - [3.2 CAMERA + LCD TOUCH BACPAC OR BATTERY BACPAC](#)
- [4 ACCESSING THE PORTS](#)
- [5 JOIN THE GOPRO MOVEMENT](#)
- [6 DOWNLOAD](#)
- [7 References](#)
- [8 Related Posts](#)

### GoPro The Frame User Manual

#### The Frame

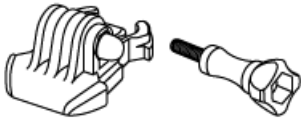
THE SMALLEST, LIGHTEST WAY TO MOUNT YOUR GOPRO.

#### What's Included



## THE FRAME

Features a minimalist design for compact mounting and optimal audio capture during low-speed activities. Provides easy access to microSD, Micro HDMI and USB ports. An integrated latch allows the camera to be removed without moving the mount.



## QUICK RELEASE BUCKLE + THUMB SCREW

Enables quick, convenient mounting



## PROTECTIVE LENS

Protects the camera lens against scratches, dust and debris.

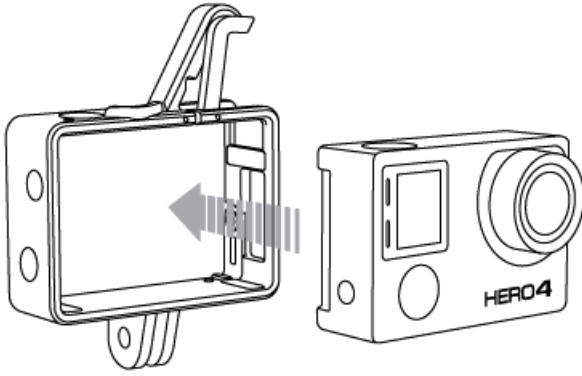
## Setting up

### JUST THE CAMERA



**Step 1**

Unhook the latch on the top right side of The Frame.

**Step 2**

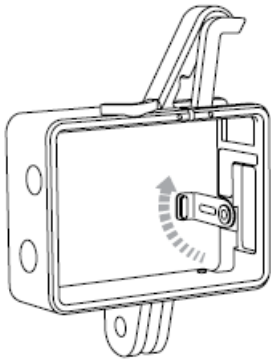
Holding the latch open, slide the camera into The Frame.

**Step 3**

When the camera is flush with The Frame, close the latch to secure.

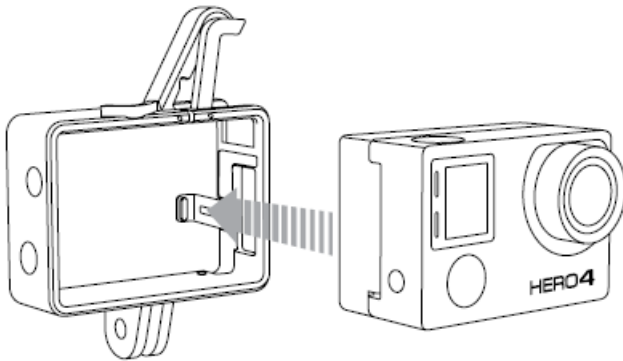
**CAMERA + LCD TOUCH BACPAC OR BATTERY BACPAC****Step 1**

Unhook the latch on the top right side of The Frame.



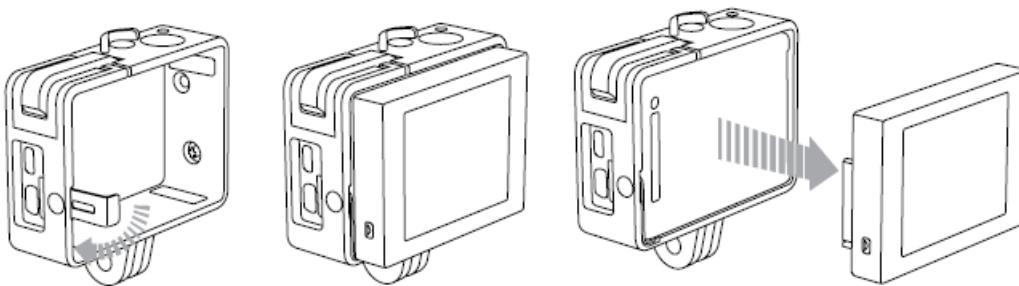
### Step 2

Unhook the metal support arm and extend it 90°. The arm must be used for the BacPac to be properly secured.



### Step 3

Slide camera into The Frame until the BacPac rests against the support arm, then close the latch.

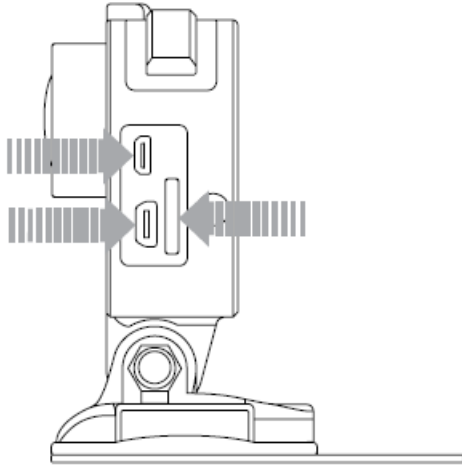


**PRO TIP:** Want to quickly check your shot before recording? Leave the metal support arm unextended inside The Frame, then attach and detach the LCD Touch BacPac™ without removing the camera.

Please note, the LCD Touch BacPac is not properly secured for shooting without the support arm extended.

## ACCESSING THE PORTS

The Frame provides easy, full-time access to the microSD, Micro HDMI and USB ports—perfect for live-feed video, charging and data offload.



## DRY ENVIRONMENTS ONLY

The Frame does not provide waterproof protection for your camera, and is not intended for use in wet, dirty or extreme conditions.

## COMPATIBILITY

Compatible with all HERO4, HERO3+ and HERO3 cameras.  
Compatible with the LCD Touch BacPac™ and Battery BacPac™.

## CUSTOMER SUPPORT

GoPro is dedicated to providing the best possible service. To reach GoPro Customer Support, visit [gopro.com/support](https://gopro.com/support).

## JOIN THE GOPRO MOVEMENT

- [facebook.com/GoPro](https://facebook.com/GoPro)
- [youtube.com/GoPro](https://youtube.com/GoPro)
- [twitter.com/GoPro](https://twitter.com/GoPro)
- [instagram.com/GoPro](https://instagram.com/GoPro)



[facebook.com/GoPro](https://facebook.com/GoPro)



[youtube.com/GoPro](https://youtube.com/GoPro)



[twitter.com/GoPro](https://twitter.com/GoPro)



[instagram.com/GoPro](https://instagram.com/GoPro)

Learn more about GoPro products at [gopro.com](https://gopro.com)

---

## DOWNLOAD

---

## References

- [User Manual](#)