



# GoPro Light Mod User Manual

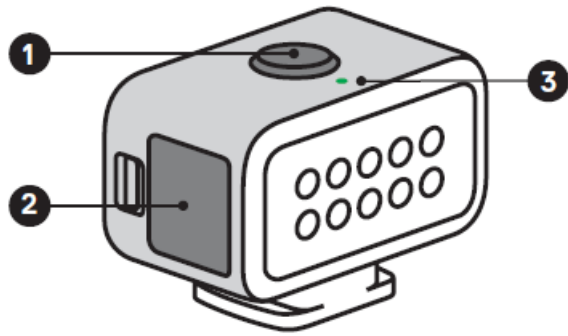
[Home](#) » [GoPro](#) » GoPro Light Mod User Manual 

## Contents

- [1 GoPro Light Mod User Manual](#)
- [2 The Basics](#)
- [3 Battery](#)
- [4 CHARGING](#)
- [5 Using Your Light Mod](#)
- [6 TECH SPECS](#)
- [7 Mounting](#)
- [8 Removing the Mount Adapter](#)
- [9 Using the Diffuser](#)
- [10 DOWNLOAD](#)
- [11 References](#)
- [12 Related Posts](#)

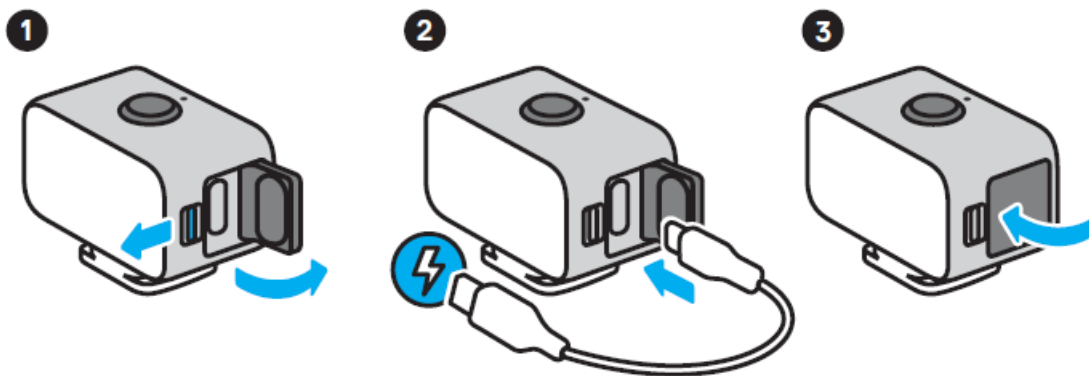
## GoPro Light Mod User Manual

### The Basics

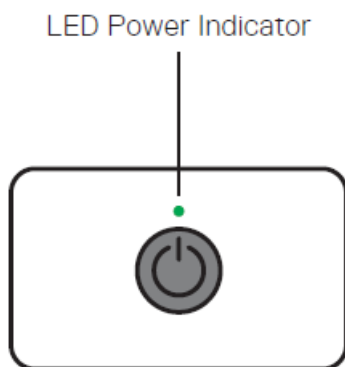


- 1. Power Button
- 2. USB-C Door
- 3. LED Power Indicator

## Battery



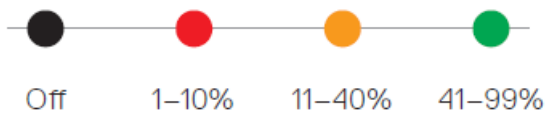
**Heads Up:** Be sure that the door is locked and waterproof by firmly pressing it shut after charging.



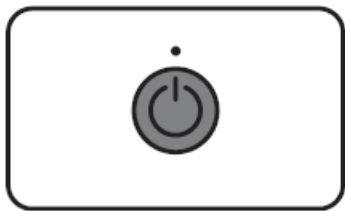
## CHARGING


The LED will pulse green when charging and turn off when the battery is fully charged. It takes about 1.5 hours to fully charge the battery.

## BATTERY LIFE



Using Your Light Mod



Press  to cycle through the three levels of illumination and the strobe.


	Brightness	Battery Life*
Level 1	20 lumens	6 hours
Level 2	60 lumens	2 hours
Level 3	125 lumens 120 lux @1m	1 hour
Strobe		7 hours

\*Battery life may vary based on usage and other external conditions.

OVERDRIVE

Quickly double press  to boost illumination to 200 lumens for 30 seconds.

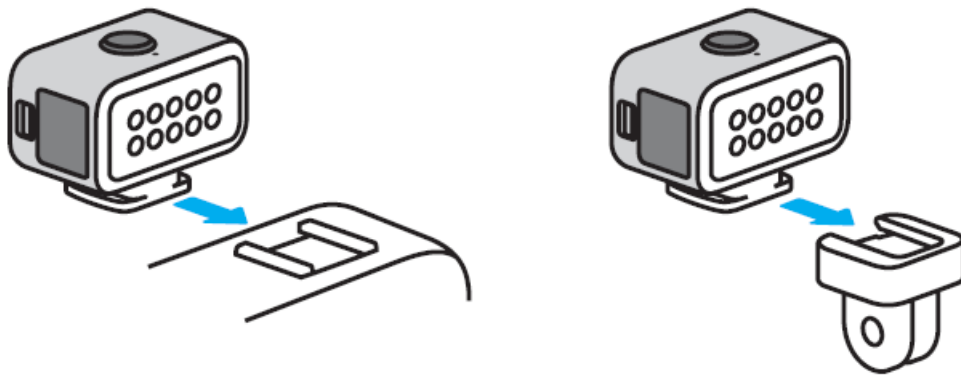
POWERING OFF

Press and hold  .

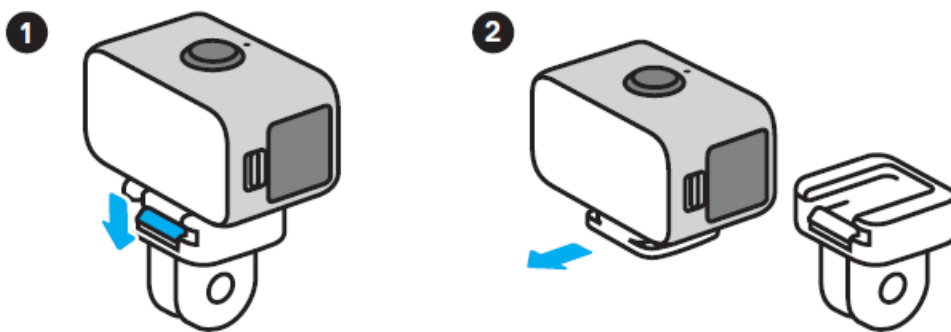
TECH SPECS

**Color temperature without**  
diffuser: 5700K.  
**Color temperature with**  
diffuser: 5000K.  
CRI: 90+

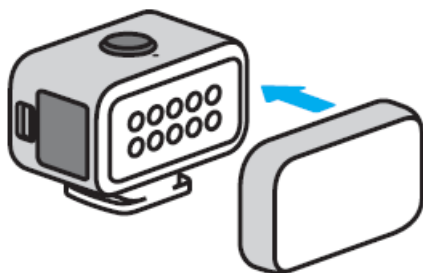
Mounting



## Removing the Mount Adapter



## Using the Diffuser



Attach the diffuser to the front of your Light Mod to soften the light.

---

## DOWNLOAD

GoPro Light Mod User Manual – [[Download PDF](#)]

---

---

## References

- [User Manual](#)

Manuals+.