



# GOOSKY S2 Helicopter Controller User Guide

[Home](#) » [GOOSKY](#) » GOOSKY S2 Helicopter Controller User Guide 

# GOOSKY

## 52 Quick Start Guide

### Contents

- [1 Disclaimer statement](#)
- [2 Precautions](#)
- [3 Introduction to the functions of the remote control](#)
- [4 Introduction to indicator light of flight control](#)
- [5 Introduction to flight control bind](#)
- [6 Introduction of flight control interface](#)
- [7 APP Download](#)
- [8 APP Instructions for Use](#)
- [9 Documents / Resources](#)
- [10 Related Posts](#)

### Disclaimer statement

- This product is not a toy and is not intended for use by persons under the age of 14. Do not let children touch the 52, and be very careful when operating in a scene where children are present,
  - This product is a competitive helicopter, which will provide a relaxed and comfortable flying experience when the power supply is working properly and the 'components are not damaged.
  - Please be sure to read this document, product manual, and transmitter manual carefully before using the product to understand your legal rights, responsibilities and safety instructions. Otherwise, it may cause property damage, safety accidents and personal safety hazards. Once you use this product, you are deemed to have understood, recognized and accepted all the terms and content of this document.
- The user undertakes to be responsible for his own actions and all consequences arising therefrom.

- GOOSKY shall not be liable for all issues caused by the user's failure to use the product in accordance with this guideline, product manual, and remote control manual.

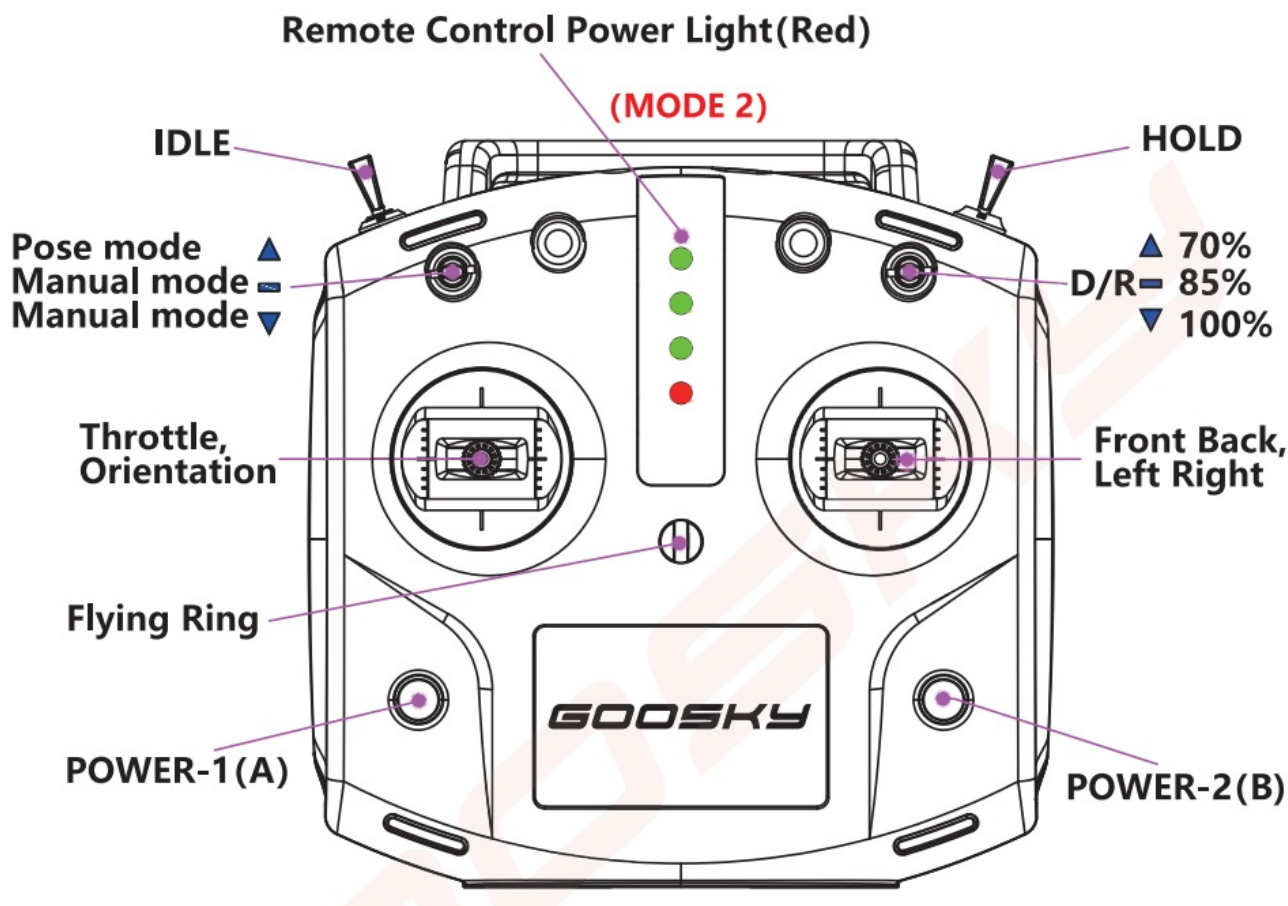
In compliance with laws and regulations, GOOSKY.

has the final right to interpret this document.

## Precautions

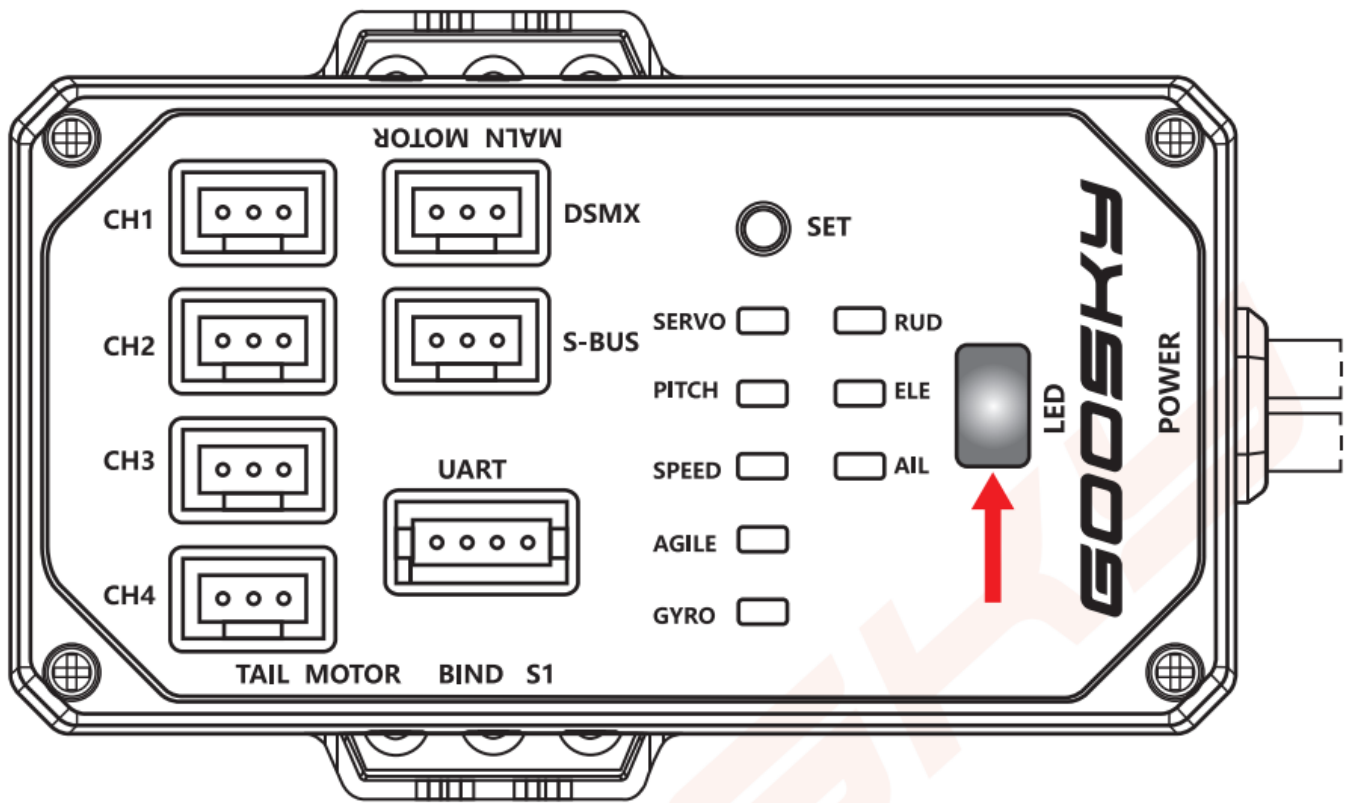
- 52 aerobatic helicopter has certain dangers. Before operation, be sure to read the guide or instruction to ensure the safety of use, so as not to accidentally injure yourself or others.
- Please fly in an open outdoor environment and away from crowd:
- Please keep away from high-tension towers or high-voltage cables to avoid electromagnetic interference.
- Before flying, check the amount of the power of the remote control and the helicopter to ensure that the equipment is powered,
- Be sure to fully charge the battery before using it then flying

## Introduction to the functions of the remote control



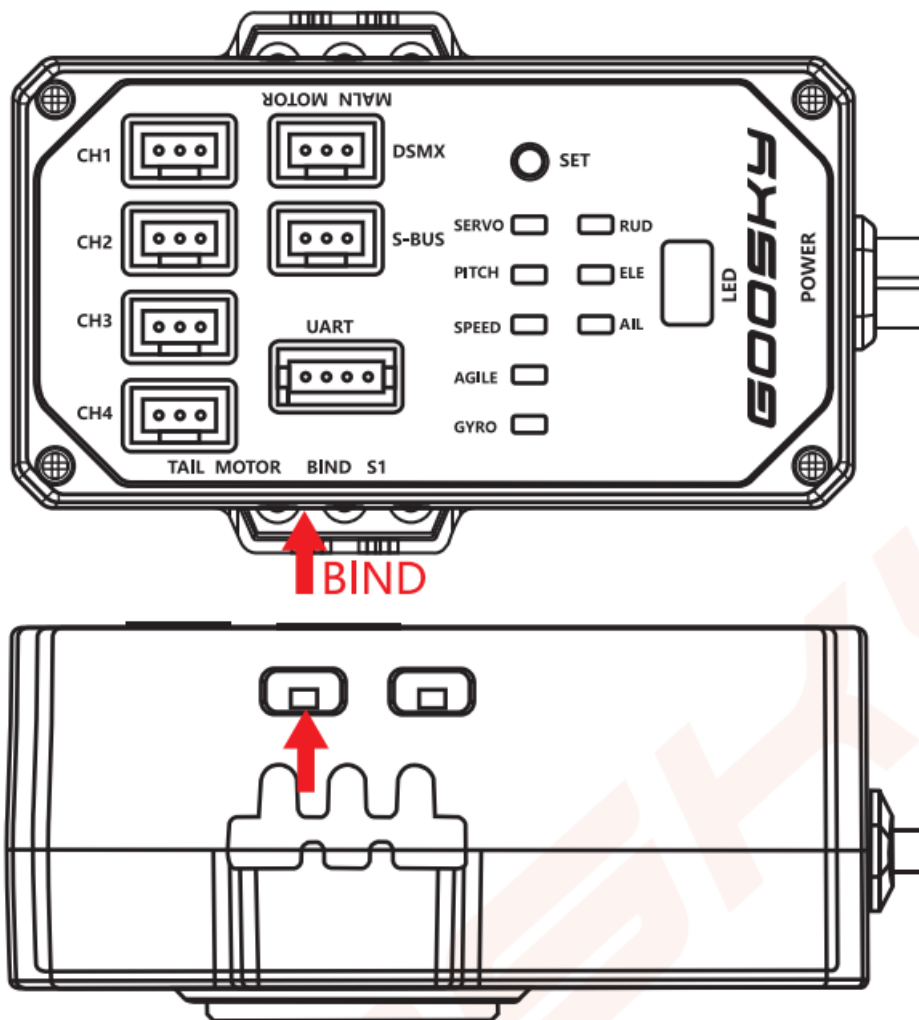
**Note:** The picture shows the MODE-2 (left-hand throttle) remote control

## Introduction to indicator light of flight control



Introduction to LED indicator light of flight control	
Blue light flashes slowly	No binding
Blue light stays on	Binding success
Red light stays on	Pose mode
Red light flashing	Manual mode
Green light stays on	Turn off pose mode
Link status indicator between APP and flight control	
Blue light flashes quickly	Android APP connected successfully
Blue light stays on	IOS APP connected successfully

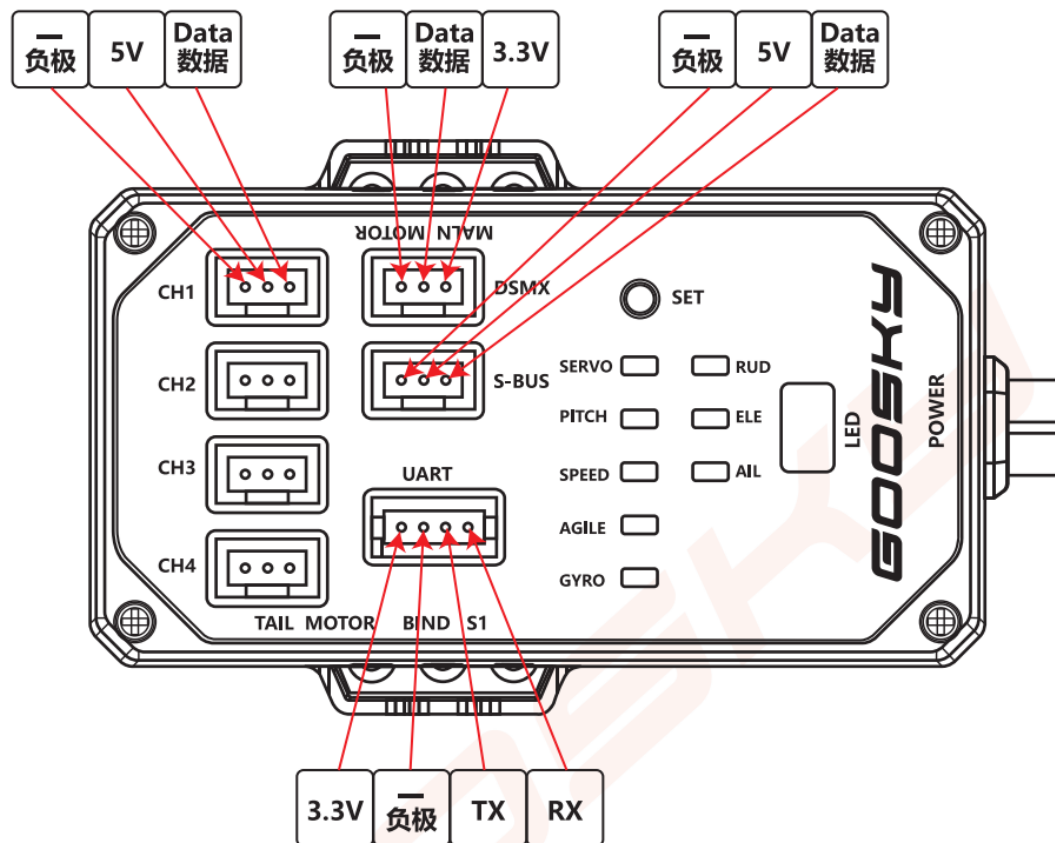
## Introduction to flight control bind



“Turn on the GOOSKY T8 transmitter, press the BIND button for 3 times after the helicopter is powered on. The blue light flashes quickly. Keep the transmitter less than one meter away from the flight control. The flight control passes self-detection when the blue light & sound on. Then the binding is done. “Turn on the Futaba transmitter, adjust the communication protocol to (5-11155) Press and hold the BIND button when the helicopter is powered on, the blue light flashes quickly then Keep the transmitter less than one meter away from the flight control. The flight control passes self-detection when the blue lights sound on. Then the binding is done.

**Note:** The main blades must be disassembled before the helicopter is powered on.

## Introduction of flight control interface



1. CH1-CH2-CH3-CH4: Servo interface.
2. DSMX: Support ppm, dsm, dsm; the interface uses HX1.5mm pitch 3P plug
3. S-BUS: Support S-BUS, the interface uses J5 T1.25mm pitch 3P plug.
4. UART: Bluetooth interface.

**Note:** For the detailed function introduction of the control, please go to the official Service and Support, and download the control Setting manual to view the detailed introduction.

Other brand remote control and 52 connection, setting process

**Note:** For safety, it is recommended to disassemble the main blades and tail blades of the helicopter

1. The receiver is inserted into the flight control receiver interface, and binding with the remote control
2. Create a new model in the remote control
3. Choose Helicopter
4. Select the type of swashplate (H-1)
5. Set throttle lock.
6. Set 5 channels, manual, pose mode switch
7. Set throttle curve
8. Set pitch curve
9. Check Channel Reverse (Throttle)

**Note:** For the remote control parameter setting tutorial, please go to the official website > Service and Support, download the relevant manual, and View the detailed introduction.

#### Information about the official website

1. Website: [www.GOO-SKY.com](http://www.GOO-SKY.com).

2. Official website > service and support, there are. product manuals and various remote control setting instructions, APP usage guidelines, flight control usage guidelines, etc



<http://goo-sky.com/Content/2117191.html?SiteType=1&noLoadDesignFrame=1&SiteType=1&view=1>

## APP Download

1. The APP can be downloaded by searching GOOSKY in the App Store or Google Play, or by scanning the QR code provided by GOOSKY.
2. To download and use the GOOSKY APP on mobile phones, users need to authorize relevant permissions to avoid affecting the use.



<https://www.pgyer.com/fhqb>

## APP Instructions for Use


1. When iPhone is connected to the helicopter, the connected Bluetooth name is: GOOSKY-10S 000, and the last five digits are digital codes. The code of each Bluetooth module is unique. Be careful not to connect incorrectly.
2. When Android phone is connected to the helicopter, the connected Bluetooth name is GOOSKY-Android-

oooex, and the last five digits are digital codes. The code of each Bluetooth module is unique. Be careful not to connect incorrectly.

3. For the GOOSKY APP instruction and parameter adjustment, please go to the official website > Service and Support, download the APP instruction, and view the detailed introduction.



## Documents / Resources

	<a href="#">GOOSKY S2 Helicopter Controller</a> [pdf] User Guide S2 Helicopter Controller, S2, Helicopter Controller, Controller
---	---

[Manuals+](#).