

GOODWE
STS Series
Static Transfer
Switch



GOODWE STS Series Static Transfer Switch Installation Guide

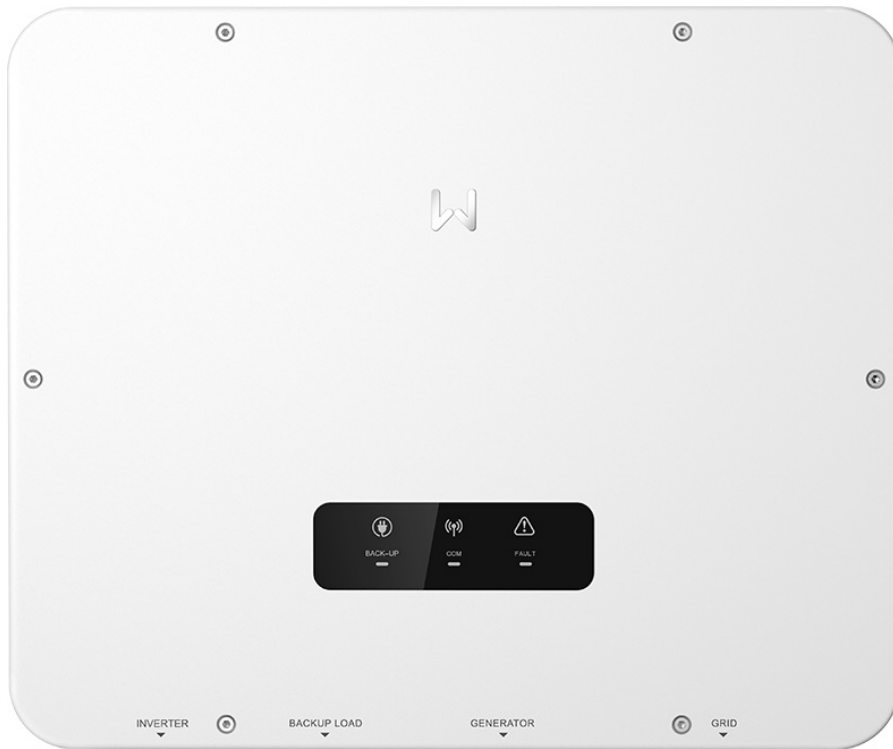
[Home](#) » [GOODWE](#) » GOODWE STS Series Static Transfer Switch Installation Guide 

Contents

- 1 [GOODWE STS Series Static Transfer Switch](#)
- 2 [Product Specifications](#)
- 3 [Product Usage Instructions](#)
- 4 [BOX CONTENT](#)
- 5 [DIMENSION](#)
- 6 [INSTALLATION](#)
- 7 [Electrical Connection](#)
- 8 [Commissioning and Monitoring](#)
- 9 [FOR MORE INFO](#)
- 10 [ABOUT COMPANY](#)
- 11 [FAQ](#)
- 12 [Documents / Resources](#)
 - 12.1 [References](#)
- 13 [Related Posts](#)

GOODWE

GOODWE STS Series Static Transfer Switch



Product Specifications

- **Product Name:** STS Series Static Transfer Switch (STS200-80-10)
- **Version:** V1.3-2024-10-17
- **Dimensions:** 425mm x 110mm x 100mm
- **Weight:** 2kg
- **Manufacturer:** GoodWe Technologies Co., Ltd.
- **Address:** No. 90 Zijin Rd., New District, Suzhou, 215011, China
- **Contact:** T: [400-998-1212](tel:400-998-1212), Email: service@goodwe.com
- **Languages Supported:** CS, DE, EN, ES, FR, HU, IT, NL, PL, PT, ZH

Product Usage Instructions

Installation:

Follow the Quick Installation Guide provided to install the STS Series Static Transfer Switch in your setup.

Connections:

Connect the AC input from the inverter, backup load, generator, and grid to the designated terminals on the switch. Ensure proper connections and secure them firmly.

Power Management:

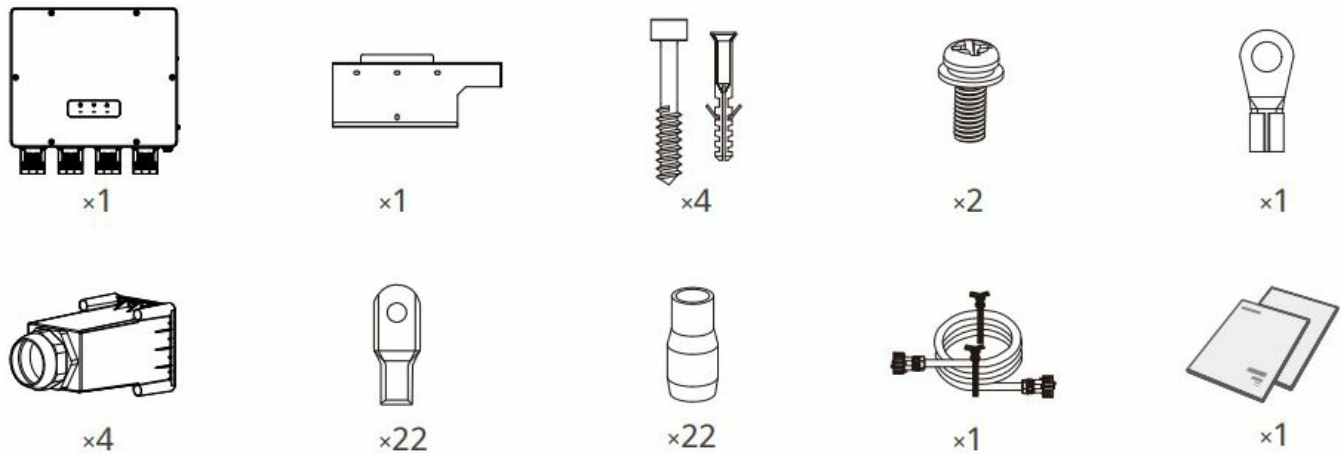
Use the STS switch to manage power sources efficiently. It can handle up to 90A of current from the inverter, generator, backup load, and grid.

Note

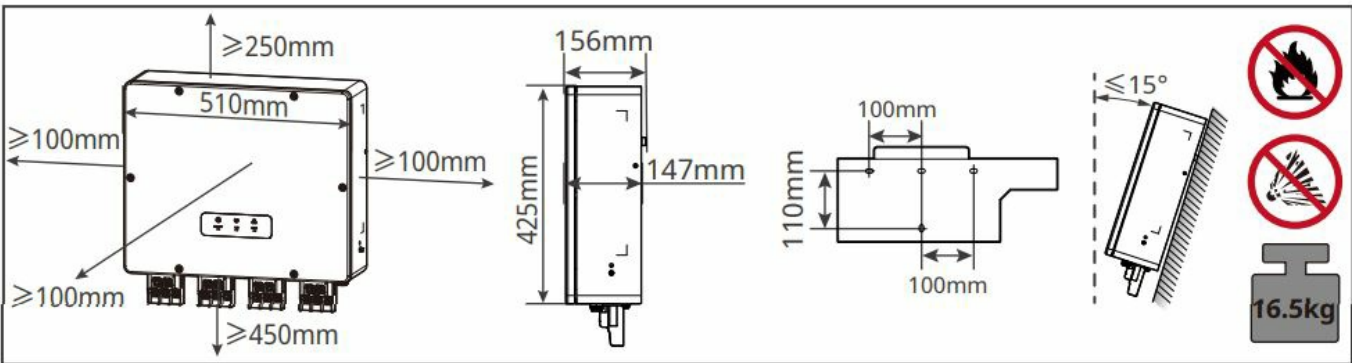
- The information in this quick installation guide is subject to change due to product updates or other reasons. This guide cannot replace the product labels or the safety precautions in the user manual unless otherwise specified. All descriptions here are for guidance only.

- All operations should be performed by trained and knowledgeable technicians who are familiar with local standards and safety regulations.
- Strictly follow the installation, operation, and configuration instructions in this guide and user manual. The manufacturer shall not be liable for equipment damage or personal injury if you do not follow the instructions.

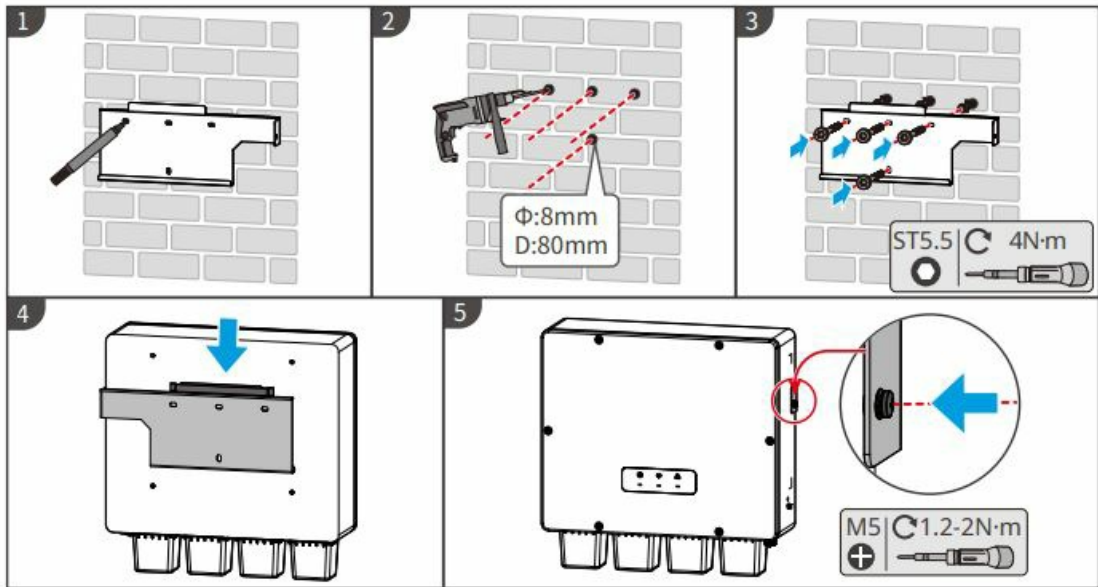
BOX CONTENT



DIMENSION

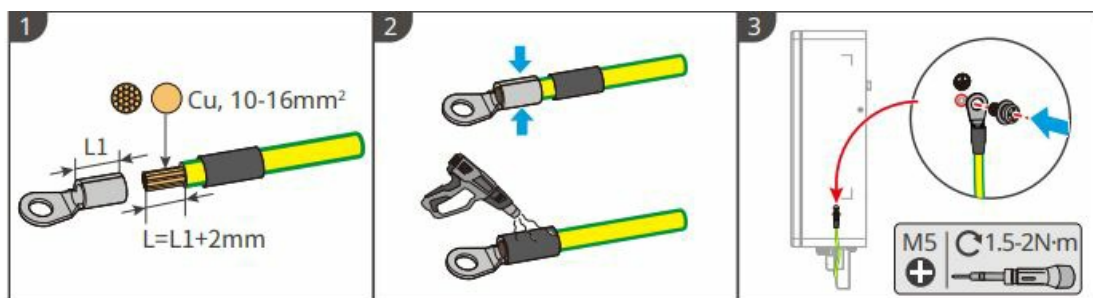


INSTALLATION

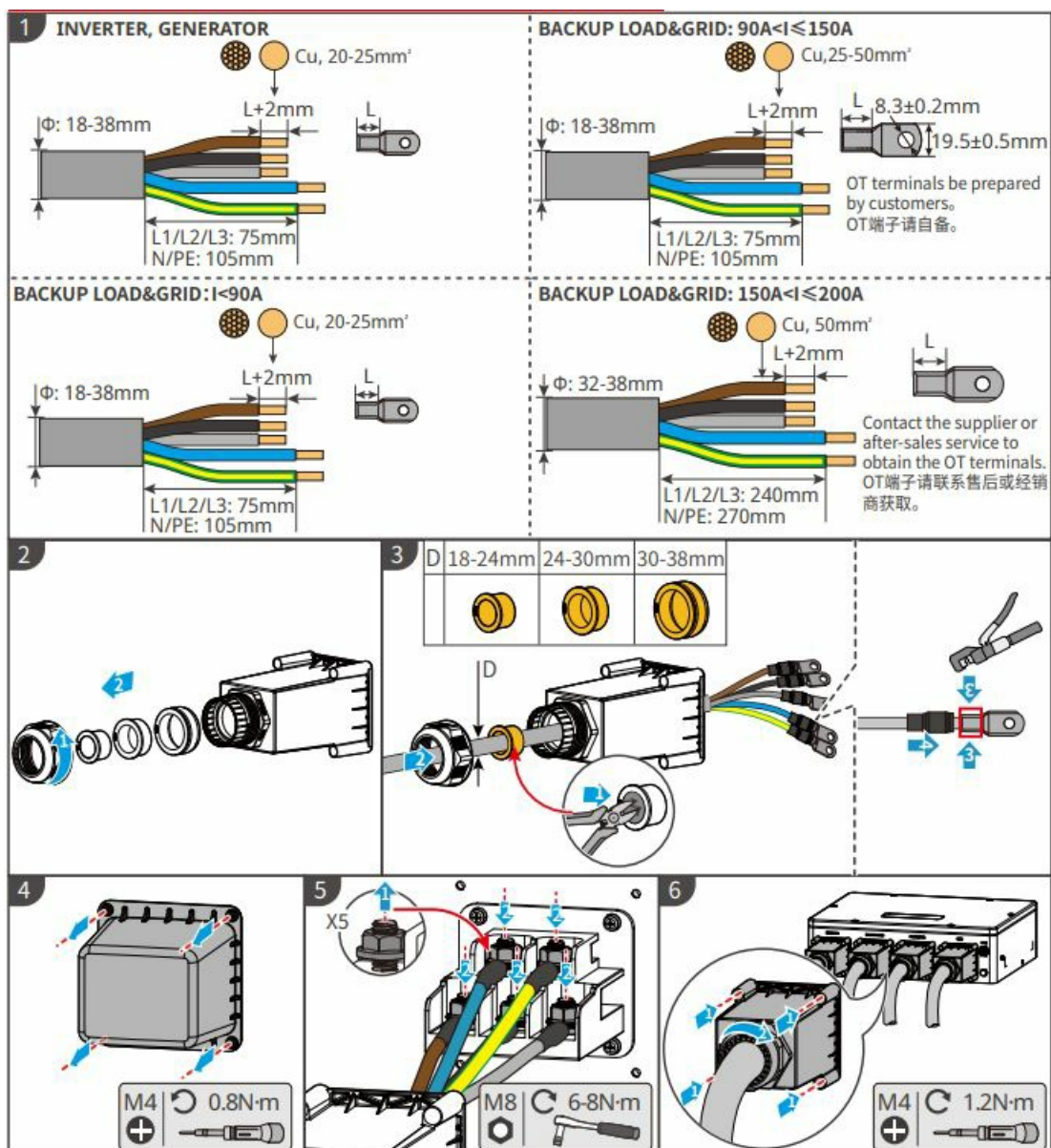


Electrical Connection

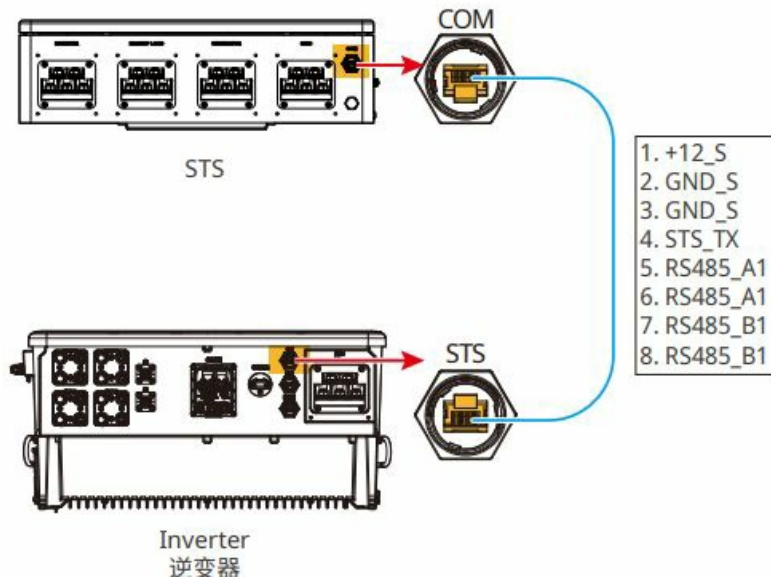
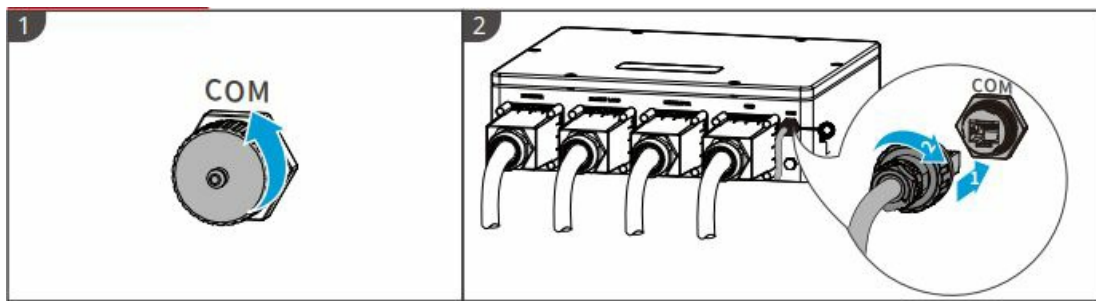
PE



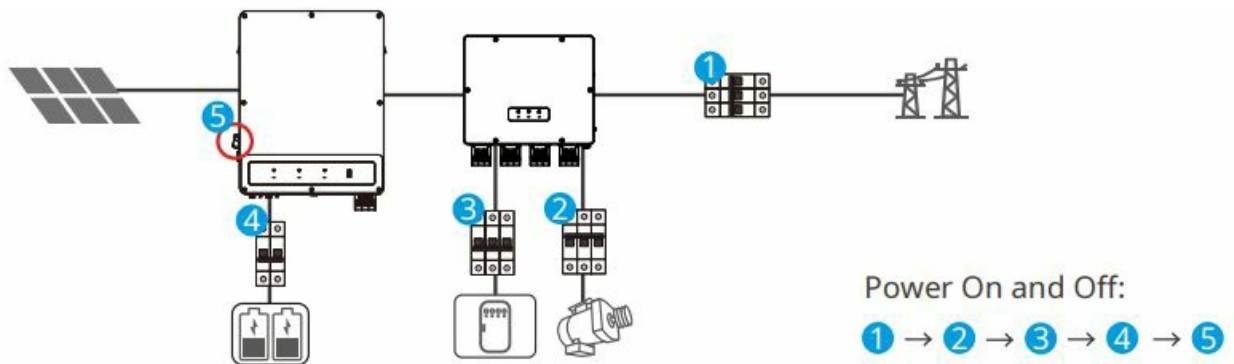
AC (INVERTER & BACKUP LOAD & GENERATOR & GRID)



COM (COM)



Commissioning and Monitoring



FOR MORE INFO



Commercial & Industrial Smart Inverter Solutions Guide ET 40-50kW



Commercial & Industrial Smart Inverter Solutions User Manual ET 40-50kW



工商业智能逆变器解决方案指导 ET 40-50kW



工商业智能逆变器解决方案 用户手册 ET 40-50kW

ABOUT COMPANY

- GoodWe Technologies Co., Ltd.
- No. 90 Zijin Rd., New District,
- Suzhou, 215011, China
- www.goodwe.com
- service@goodwe.com
- T: [400-998-1212](tel:400-998-1212)

FAQ

- **How do I reset the STS Series Static Transfer Switch?**

To reset the switch, turn off the power supply connected to it, wait for a few seconds, and then turn the power back on.

- **What should I do if I encounter a power overload situation?**

If you experience a power overload, immediately disconnect the input sources from the switch and consult a professional electrician to resolve the issue.

Documents / Resources



[GOODWE STS Series Static Transfer Switch](#) [pdf] Installation Guide
STS200-80-10, STS Series Static Transfer Switch, Static Transfer Switch, Transfer Switch, Switch

References

- [User Manual](#)