



# GOODWE SEMS Portal Web User Guide

[Home](#) » [GOODWE](#) » **GOODWE SEMS Portal Web User Guide** 

# Contents

- 1 SEMS Portal Web
- 2 About This Manual
- 3 Product Information
- 4 Applicable Products
- 5 Web Login
- 6 Account Registration
- 7 Menu Introduction
- 8 Product Usage Instructions
- 9 About This Manual
- 10 Web Introduction
  - 10.1 Web Login
  - 10.2 Account Registration
- 11 Plant Monitoring
  - 11.1 Checking Plant Overview
- 12 Plant Management
  - 12.1 Creating Plant
  - 12.2 Managing Organization
  - 12.3 Setting Dashboard
- 13 FAQs
  - 13.1 How to check the Privacy Info?
- 14 Documents / Resources
  - 14.1 References
- 15 Related Posts

# GOODWE

## SEMS Portal Web



## About This Manual

The SEMS Portal Web User Manual provides instructions for installers and end-users on how to use the web portal to monitor their plants. The manual contains information on applicable products, web login, account registration, menu introduction, plant monitoring, and checking plant overview, details, alarms, operation reports, and warranty info.

## Product Information

The SEMS Portal Web is a web platform that allows installers and end-users to monitor their GoodWe solar plants remotely. Users can access the platform via a web browser on a computer or mobile device with an internet connection. The platform provides real-time and historical data, including plant performance, energy production, and system errors, to help users monitor the health of their solar plants.

## Applicable Products

The SEMS Portal Web is applicable to all GoodWe solar plants.

## Web Login

To access the SEMS Portal Web, users need to log in with their account credentials. Installers can use their organization account, while end-users can register for their own account.

## Account Registration

End-users can register for their own account by following the steps outlined in the manual:

- Go to the SEMS Portal Web login page
- Click on “Register” and complete the registration form

- Verify the account via email
- Login with the registered email and password

Installers can register for an organization account by contacting GoodWe.

## Menu Introduction

The SEMS Portal Web menu consists of the following sections:

- Plant Overview: Displays a summary of all registered plants.
- Plant Details: Displays detailed information about a selected plant, such as power generation, status, and equipment.
- Alarms: Displays alarms and alerts for a selected plant.
- Operation Reports: Displays operation reports for a selected plant.
- Warranty Info: Displays warranty information for a selected plant.

## Product Usage Instructions

To use the SEMS Portal Web, follow the steps outlined in the manual:

1. Login to the SEMS Portal Web with your account credentials.
2. Select the desired plant from the Plant Overview section.
3. View detailed information about the plant in the Plant Details section.
4. Check alarms and alerts in the Alarms section.
5. View operation reports in the Operation Reports section.
6. Check warranty information in the Warranty Info section.

**Note:** that the SEMS Portal Web is for monitoring purposes only and cannot replace the product labels or safety precautions in the user manual unless otherwise specified. All descriptions in the manual are for guidance only.

**Copyright©GoodWe Technologies Co.,Ltd. 2022. All rights reserved.**

No part of this manual can be reproduced or transmitted to the public platform in any form or by any means without the prior written authorization of GoodWe.

### Trademarks

GOODWE and other GOODWE trademarks are trademarks of GoodWe Technologies Co.,Ltd. All other trademarks or registered trademarks mentioned in this manual are owned by GoodWe Technologies Co.,Ltd.

### NOTICE

The information in this user manual is subject to change due to product updates or other reasons. This guide cannot replace the product labels or the safety precautions in the user manual unless otherwise specified. All descriptions in the manual are for guidance only.

## About This Manual

- This manual mainly introduces common operations via SEMS Portal web.
- This manual is subject to update without notice. For more product details and latest documents, visit

## **Target Audience**

This manual applies to trained and knowledgeable technical professionals. The technical personnel has to be familiar with the product, local standards, and electric systems.

## **Symbol Definition**

Different levels of warning messages in this manual are defined as follows:

### **DANGER**

Indicates a high-level hazard that, if not avoided, will result in death or serious injury.

### **WARNING**

Indicates a medium-level hazard that, if not avoided, could result in death or serious injury.

### **CAUTION**

Indicates a low-level hazard that, if not avoided, could result in minor or moderate injury.

### **NOTICE**

Highlight and supplement the texts. Or some skills and methods to solve product-related problems to save time.

## **Updates**

The latest document contains all the updates made in earlier issues.

### **V1.0 2022-01-17**

- First Issue.

### **V1.1 2022-11-21**

- Update the whole structure and contents of the manual.

## **Web Introduction**

SEMS Portal is one monitoring platform for Power Plant. You can manage the organizations and users, add power plants, check the operating data and alarming information of the power plant via SEMS Portal.

## **Applicable Products**

You can use SEMS Portal to monitor and manage GoodWe related products, such as inverters, smart meters, data loggers, and so on.

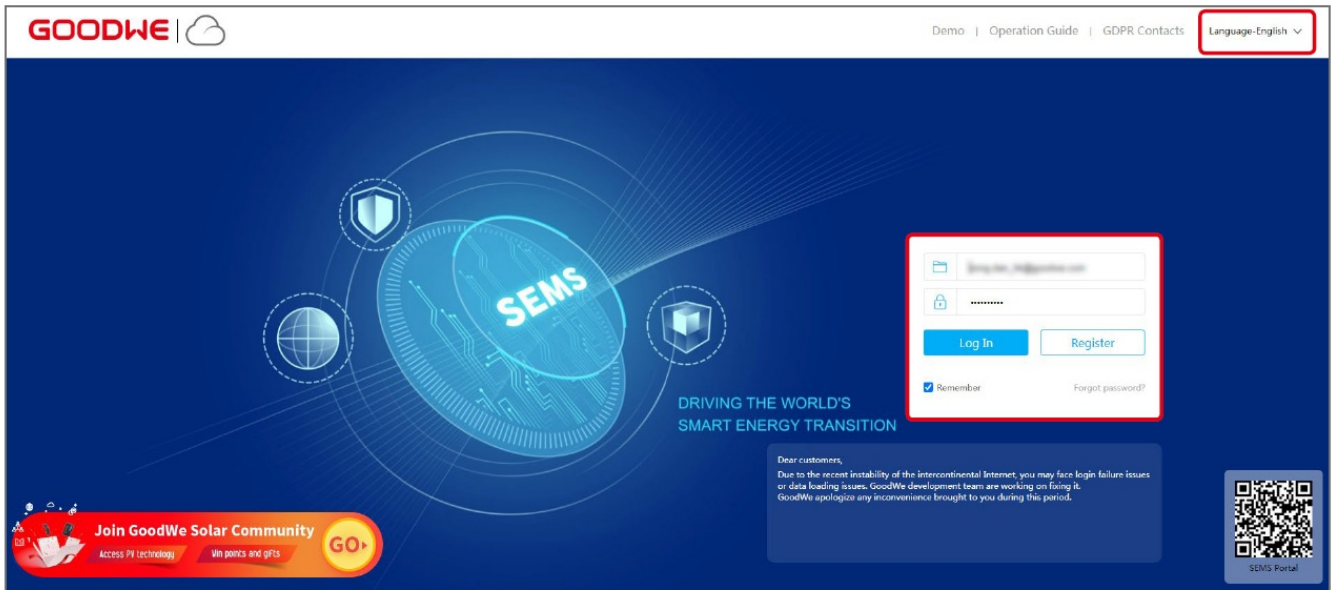
## **Web Login**

## **Preconditions**

- Already obtained the account and password;
- Operating system: Windows 7 or above versions;
- Browser: Chrome 57 or above versions;
- Resolution: 1920\*1080 pixels.

## Steps

- **Step 1:** Type <https://www.semsportal.com> in the browser address bar.
- **Step 2:** Set the language according to the actual demanding. Type the account & password, and enter into SEMS Portal Web.



## Account Registration

### Register an End User Account

- **Step 1:** Click Register on the login interface, and follow the instructions.

☒ Remember

[Forgot password?](#)

☒ End user [Need a company account?](#)

\* Email

\* Password

\* Confirm

This should be 8-16 characters, including at least one letter and one number.

\* Area ☐ AUS/NZ & Oceania ☐ Europe ☒ Other

☒ I am an adult, I have read and agreed to the following terms.  
[GOODWE Terms of Use](#)  
[GOODWE Portal Data Protection Statement](#)

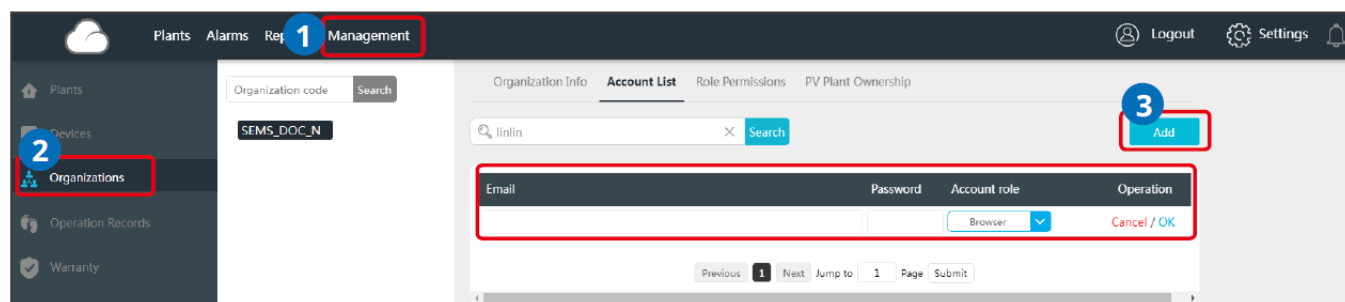
\* Required content

### Register an Organization Account

An organization account includes Administrator, Technician and Browser accounts.

#### Method 1

Create new accounts if you already have Administrator account of SEMS Portal. Step 1 Follow below steps and click OK to finish the registration.



## Method 2

Contact your distributor selling the GoodWe product to create an Administrator account for you.

## NOTICE

If neither Method 1 nor Method 2 could help, contact GoodWe After-sales Service to obtain one account.

## Menu Introduction

Main Menu	Sub Menu	Tertiary Menu	Function	Privilege Description
Plants	—	—	Check the operations of the plant.	End User, Administrator, Technician and Browser
Alarms	—	—	Check the plant alarming.	Administrator, Technician and Browser
	Historical Data	Data Selection	Check the working data of inverters.	End User, Administrator, Technician and Browser
		My Template	Items set in Data Selection can be saved as templates.	End User, Administrator, Technician and Browser

Reports	Generation Reports	Daily Report	Check the electricity prices during different times on SEC1000 and Homekit1000.	End User, Administrator, Technician and Browser
		Monthly Report	Check daily operating data of several power plants during one month.	End User, Administrator, Technician and Browser
		Annual Report	Check monthly operating data of several power plants during a year.	End User, Administrator, Technician and Browser
		User-defined Report	Check periodical operating data of several power plants during one month.	End User, Administrator, Technician and Browser
		Simulation Report	Compare the actual and estimated generating situations of the power plant, to simulate and form the annual report.	End User, Administrator, Technician and Browser
	Statistics	Monthly	Check daily generating volume of the power plants during one month.	End User, Administrator, Technician and Browser
		Annual	Check monthly generating volume of the power plants during one year.	End User, Administrator, Technician and Browser
	Plants	–	Create and manage the power plants.	End User, Administrator, Technician and Browser

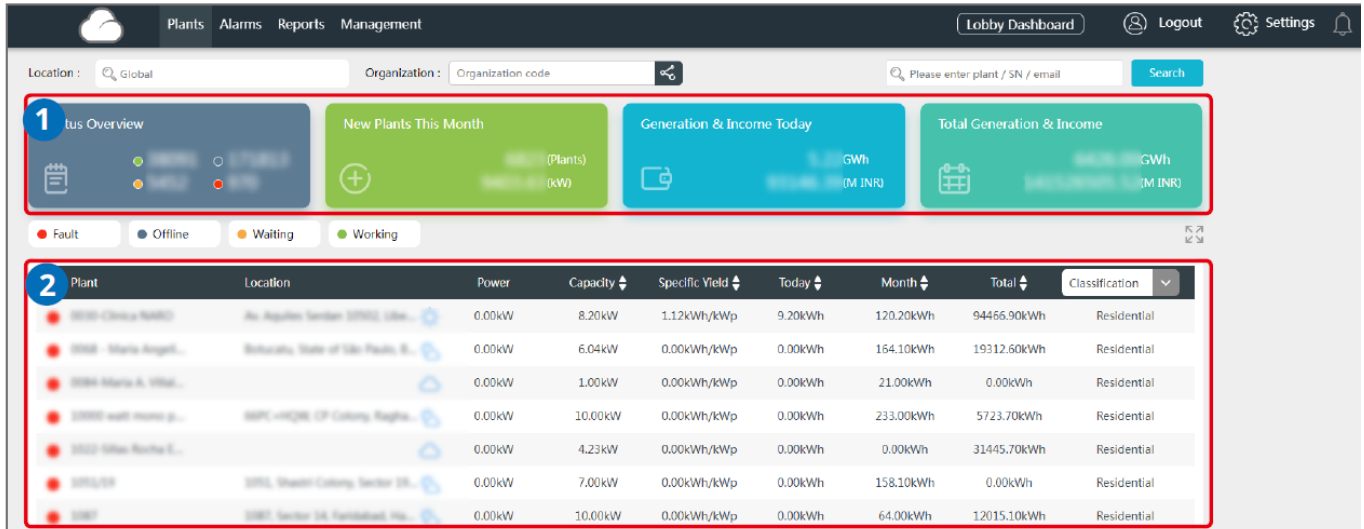
Management	Devices	–	Add, delete and modify the devices in the power plant.	End User, Administrator, Technician and Browser
	Organization	–	Check the organization, account and the ownership of the power plant, newly add or delete the sub-organizations.	Administrator
	Warranty	–	Check the device's warranty information.	End User, Administrator, Technician and Browser
Settings	Message	My Message	Set the message issuing method.	End User, Administrator, Technician and Browser
		For Owner	Set information types of the power plant sent to the owner	Administrator
	System Setting	Dashboard	Set the displaying data on Dashboard.	Administrator
		System	Set information such as the income and carbon emission of the power plant.	Administrator
		Logo	Set the Logo displayed on Dashboard or in system.	Administrator
	My Setting	My Account	Modify personal account and check the organization code.	End User, Administrator, Technician and Browser
		Personal Settings	Set the displaying format in the system.	End User, Administrator, Technician and Browser

# Plant Monitoring

## Checking Plant Overview

### NOTICE

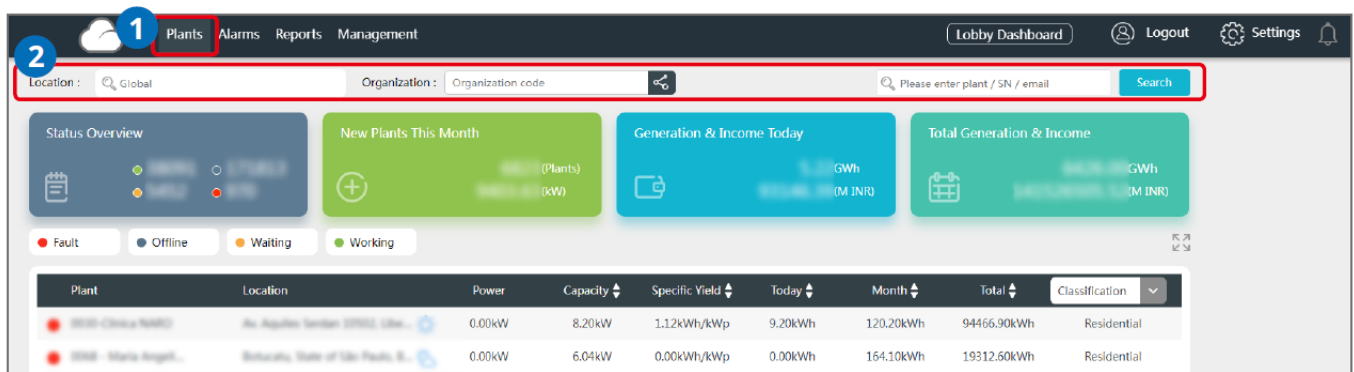
Type the account and password, and log into SEMS Portal Web. Then the overall operating situations of all power plants will be displayed on the interface under this account.



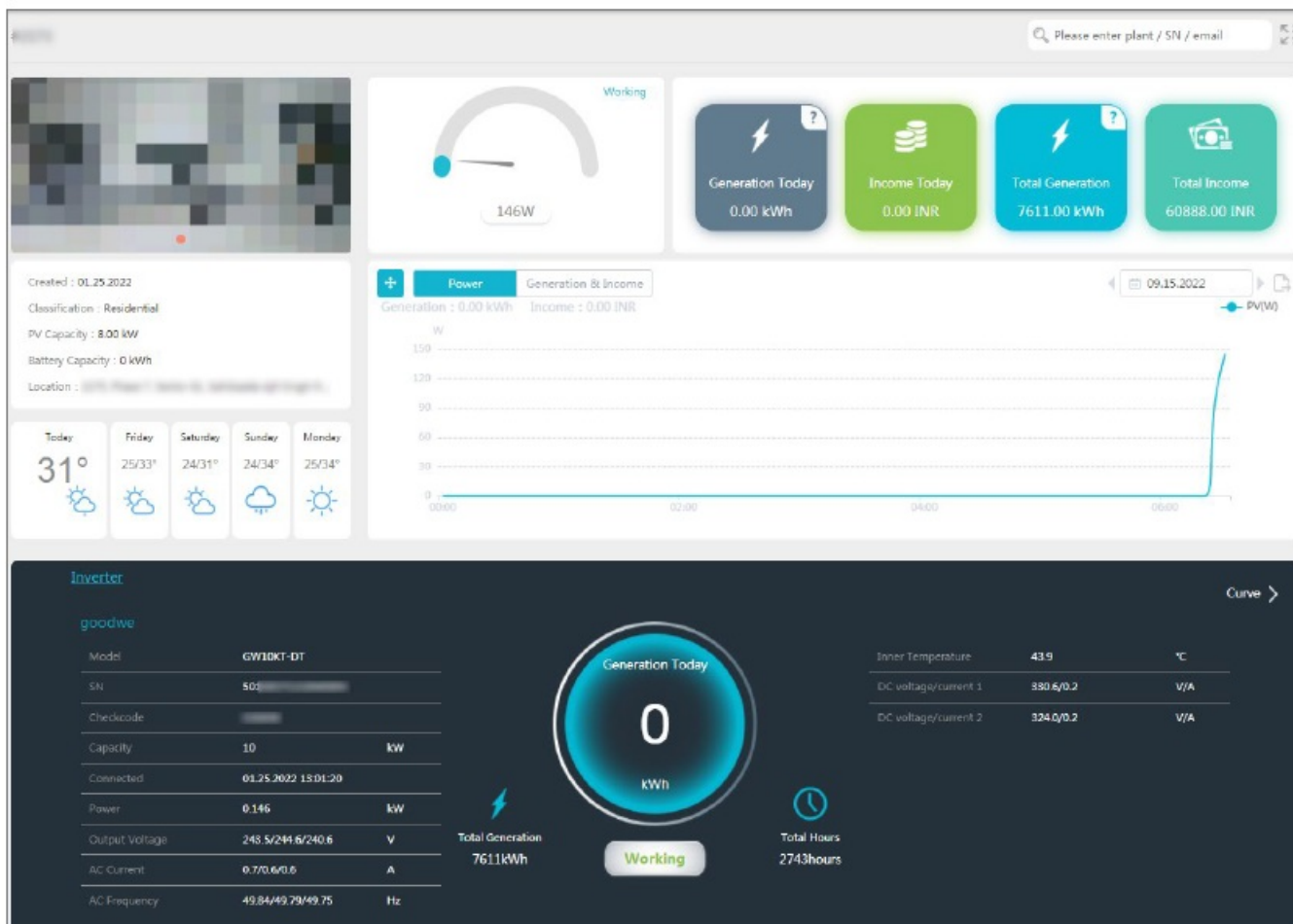
No.	Description
1	The displaying items are the overall operating information of all power plants under the specific account, such as Status Overview, New Plants This Month, Generation & Income Today, and Total Generation & Income.
2	The displaying items are the operating information of one single power plant. Click the power plant name, and you can check the detailed information of this power plant, i.e. the name, location, power, capacity, Specific Yield, daily, monthly and total generating volume of the power plant.

## Checking Plant Details

**Step 1:** (optional) Type the organization code, plant name, inverter SN or the E-mail address of the owner to search and identify the specific power plant quickly when there are plenty of power plants.



**Step 2:** Click the plant name on the list to check its details.



Detailed information of the plant:

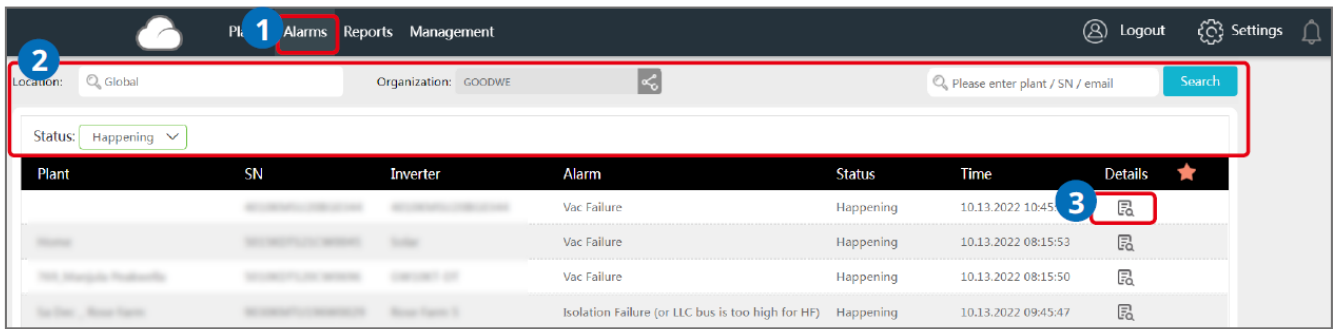
Info Type	Description
Basic Info	Creating time, type, capacity, location of the plant, weather and so on.
Statistics	Working status, real-time power, Generation Today, Income Today, Total generation, Total Income, and so on.
Chart and Figure	Power, generation and income curves and storage energy pie graph.
Device Info	Device Status, Device Data, PV Monitoring (only for Tigo devices) and single device's generating and income curve.

## Checking Alarms

Type the Location, organization code, plant name, inverter SN, the E-mail address of the owner or the Status to check the alarming information of the plant via SEMS Portal Web.

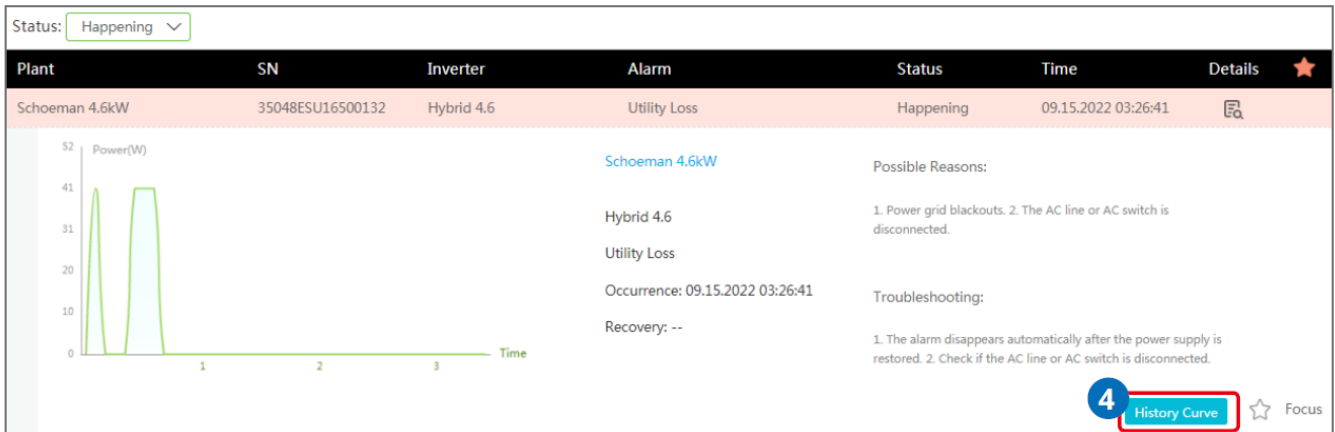
## Steps

- **Step 1:** Click Alarms tag.
- **Step 2:** (optional) Filter by Alarm type.
- **Step 3:** Click Details on the plant list to see more information.



- **Step 4:** (Optional): Click History Curve, and jumps to reports exporting interface to obtain more details.

### Detailed alarming info:

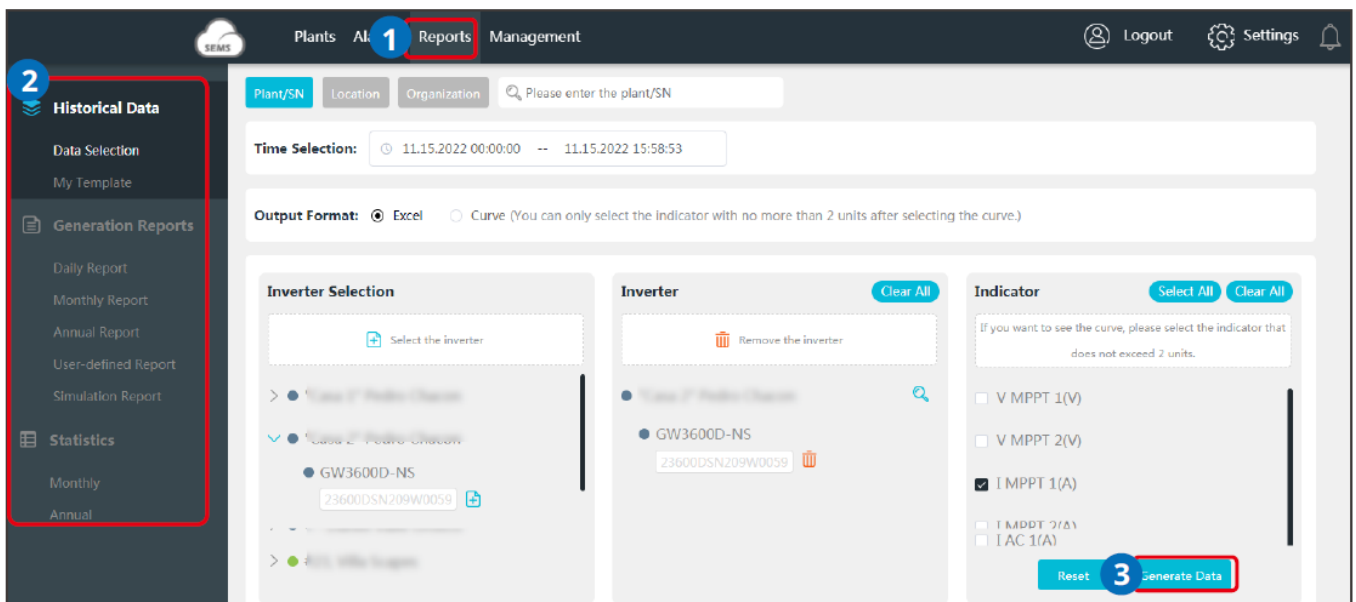


### Checking Operation Reports

Check and export the plant reports, to analyze and optimize the plant's power generating and income.

### Steps

- **Step 1:** Click Reports and enter into the inquiry page. The plant report will be generated.



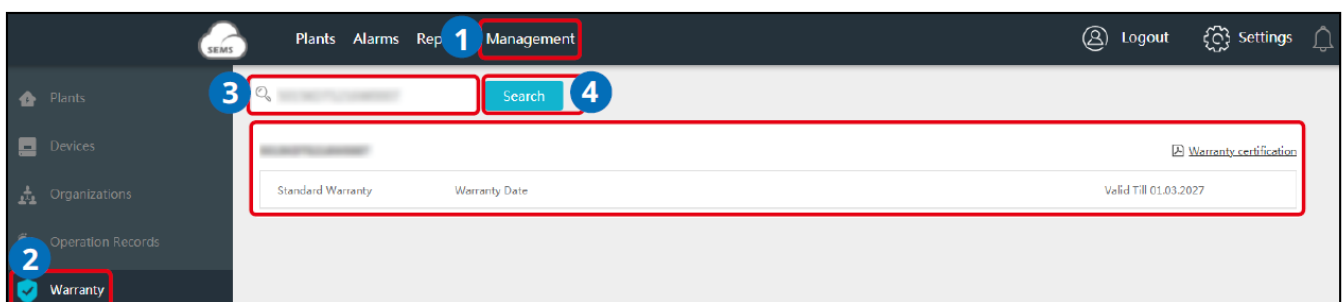
### NOTICE

Type the power plant name, inverter SN, plant location or the organization name to search and identify the specific power plant quickly when checking the plant reports.

Parameters	Description
<b>Historical Data</b>	
Data Selection	Support to check the working data of the inverter (the longest period is 7 natural days). Details depends on the actual demanding.
My Template	The items set in Data Selection can be saved as the template and kept within My Template for next usage.
<b>Generation Reports</b>	
Daily Report	Support to check the electricity prices during different times on SEC1000 and Homekit1000.
Monthly Report	Support to check daily operating data of several power plants during one month.
Annual Report	Support to check monthly operating data of several power plants during a year.
User-defined Report	Support to check daily operating data of multiple power plants within 31 days, i.e. from 2021.11.9 to 2021.12.8.
Simulation Report	Compare the actual generating and predicting generating situations of the power plant, to simulate and form its annual report.
<b>Statistics</b>	
Monthly	Support to check daily generating volume of the power plants during one month.
Annual	Support to check monthly generating volume of the power plants during one year.

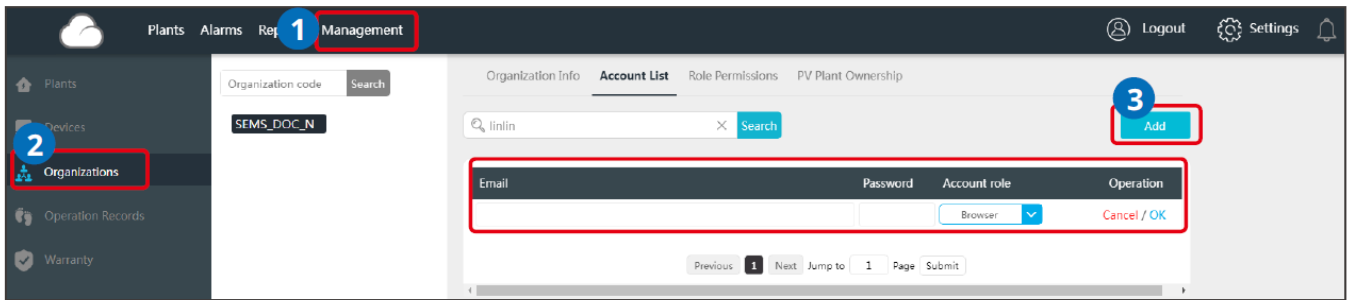
### Checking Warranty Info

Check the device's warranty information via SEMS Portal.



### Checking Account

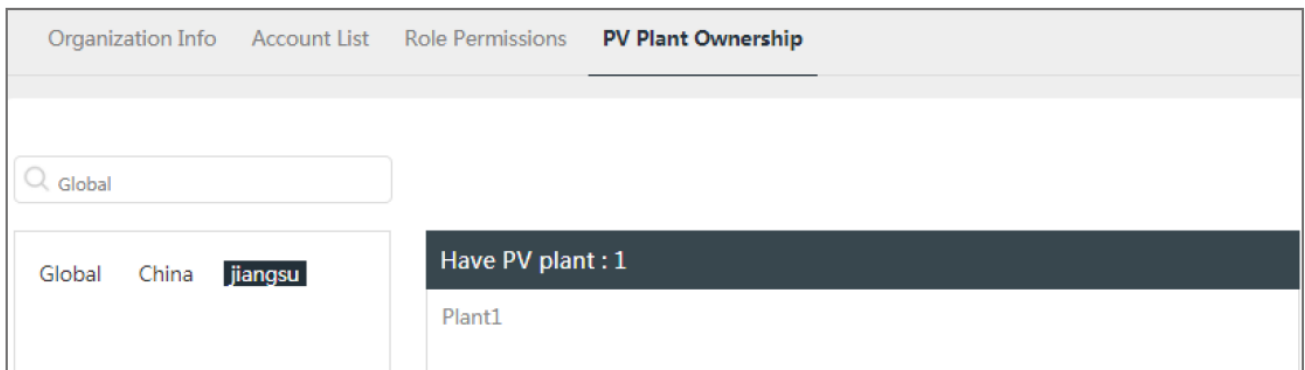
Check the account list of an organization via SEMS Portal.



## Checking Plant Ownership

Check the dealer this plant belongs to under via SEMS Portal.

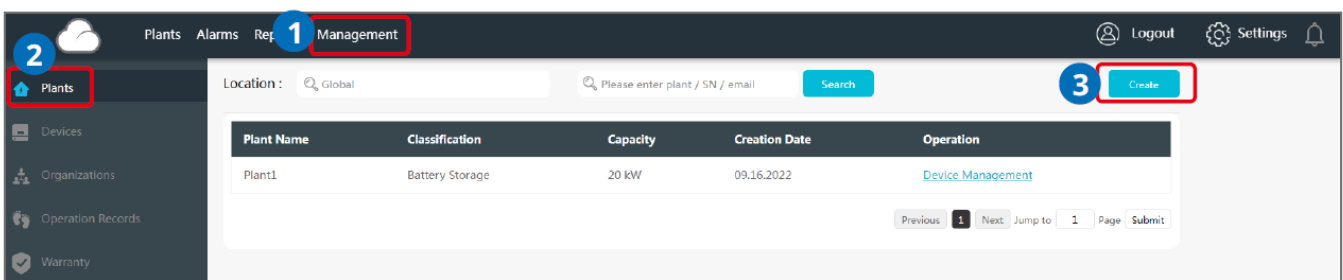
- **Step 1:** Select Management > Organizations > PV Plant Ownership, and enter into the checking page.
- **Step 2:** Find the ownership of the plant.



## Plant Management

### Creating Plant

**Step 1:** Follow the steps in the Picture below.



**Step 2:** Read the instructions, input the requested data, and finish the creation. (\* refers to the mandatory items)

## G10053963Pv plantQ496

Owner :

Add

Email

Operation

Please add owner information

Visitor :

Add

Email

Operation

Please add visitor information.

Plant Info :



\*Plant Name G10053963Pv plantQ496

\*Capacity Capacity kW

Please enter PV plant capacity

Classification Residential

Organization code G10053963

Leave this empty if you don't know the installer's code.

\*Profit Ratio 0.22 USD/kWh

Amount of solar panels 0

\*Location Location

Map

Please select your region

Detailed Address Detailed Address

Enable Profile ☒ Enable ☐ Disable

Creation Date 10.10.2022

Plant Profile

Distributed PV power plant refers to the operation mode of "construction and operation at the user's site or nearby", and implementation of "self-consumption, excess power to grid, nearby consumption, and power grid adjustment" on the user side, and in the distribution network system the characteristics of photovoltaic power generation facilities are balanced and adjusted. Distributed photovoltaic power generation follows the principle of adapting to local conditions, a clear highly efficient, decentralized layout and proximity utilization, making full use of local solar energy resources to replace and reduce fossil energy consumption. No fuel is required so the operating costs are very low. There are no moving parts, it is not easy to damage, maintenance is simple, it especially suitable for use in unattended conditions. It will not produce any waste, no pollution, noise or cause other public hazards and there is no adverse impact on the environment. Outstanding environmental benefits. Distributed photovoltaic power generation is a new type of power generation and a comprehensive energy utilization mode with broad development prospects. It can be used to realize a nearby power supply without long-

Cancel

Register

## Managing Plant

- **Step 1:** Select Management >Plants, and enter into the setting page.
- **Step 2:** Select the plant name under Plant Name and click on it.
- **Step 3:** Manage the plant, such as delete or create a plant, edit the plant information, and so on.

Location :

Plant Name	Classification	Capacity	Creation Date	Operation
Plant1	Battery Storage	20 kW	09.16.2022	<a href="#">Device Management</a>

### Plant1

Owner :

Email	Operation
test1@goodwe.com	<a href="#">Delete</a>

Visitor :

Email	Operation
test2@goodwe.com	<a href="#">Delete</a>

Plant Info :

\*Plant Name

\*Capacity

 kW

Classification

Battery Storage

Organization code

Leave this empty if you don't know the installer's code.

\*Profit Ratio

USD/kWh

Amount of solar panels

\*Plant Battery Capacity

 kWh

\*Location

Detailed Address

## Managing Device

Operations such as add, replace, delete devices, or modify the device name. The device types are: inverters, data loggers, communication box, smart meters and so on.

- **Step 1** Select Management > Devices and enter into the setting page.
- **Step 2** Select the plant name under Plant and click on it.
- **Step 3** Manage the devices within the plant including: add, replace, delete devices, or modify the device name.

Plant1

Suzhou, Jiangsu, China

[Detect other devices](#)

Add

Inverter

Replacement History

Status	Name	SN	Model	Capacity	Creation Date	Data Logger	Operation
Online	inverter2	75048EU333WV009	-	5.048 kW	09.16.2022	-	<a href="#">Modify</a> <a href="#">Replace</a> <a href="#">Delete</a>
Offline	inverter1	75048EU333WV019	-	5.048 kW	09.16.2022	-	<a href="#">Modify</a> <a href="#">Replace</a> <a href="#">Delete</a>

Previous

1

Next

Jump to


1

Page

Submit


## Managing Organization


### Add New Organization

- Step 1:** Select Management > Organizations > Organization Info, and enter into the setting page.
- Step 2:** Click , fill in the sub-organization information. Then click Submit.

Organization code

Search





SEMS\_DOC\_N

Add organization

Organization Info

Account List

Role Permissions

PV Plant Ownership

Organization

Organization 1

Organization code

G10050780

Change

Representative

test

/

7

Email

test7@goodwe.com

Cancel

Submit

### Modify the Organization

#### NOTICE


Click any place to finish the modification.

- Step 1:** Select Management > Organizations > Organization Info.
- Step 2:** Check the organization code, modify its personnel's and E-mail address.

Organization Info	Account List	Role Permissions	PV Plant Ownership
Organization	SEMS_DOC_N		
Organization code	G10050780	Change	
Representative	test / 7		
Email	test7@goodwe.com		

### Delete the Organization

- **Step 1:** Select Management > Organizations > Organization Info, and enter into the setting page.
- **Step 2:** Choose the sub-organization name and click . Then click Submit.

Organization Info	Account List	Role Permissions	PV Plant Ownership
<div>Organization code Search + </div> <div>SEMS_DOC_N</div> <div>Organization 1</div>	<div>Organization</div> <div>Organization 1</div> <div>Organization code</div> <div>G10050780 Change</div> <div>Representative</div> <div>test / 7</div> <div>Email</div> <div>test7@goodwe.com</div>		

Note
Are you sure you want to delete this organization?
<div>Cancel</div> <div>Submit</div>

### Setting Message

You can change the settings for the messages such as: Notification Preference, Message Type, and Alarm Message Setting For Owner.

### Set Message Notifying Type

- **Step 1:** Select Settings > Message > My Message, and enter into the setting page.
- **Step 2:** Choose your preferences. Then click Save Changes.

**Notification Preference:**

☒ Email(Please note that the email may be in the junk mailbox.)
 ☒ Message Center
 ☒ Pop-up(Messages shown in Pop-up dialog)

☐ Web
 ☐ APP
 ☒ Web & APP

**Message Type:**

Alarm Message

☒ ON
 ☐ OFF

Generation Report

☒ ON
 ☐ OFF

Frequency

☒ Daily
 ☐ Weekly
 ☐ Monthly

Range

☐ All plants
 ☒ Designated Plants
 

Selected:[0] >

Generation report push function does not support the single retrofit inverter

Reset

Save Changes

### Set Message Sending Object

Select whether to send the alarming messages to the owner.

**Step 1:** Select Settings > Message > For Owner, and enter into the setting page.

**Step 2:** Select the plant name, and choose whether to send the alarming message. Then click Save Changes.

**Alarm Message Setting For Owner**

Plant

Plant1

Owner's Email

test1@goodwe.com

Alarm Message

☒ Disable
 ☐ Enable

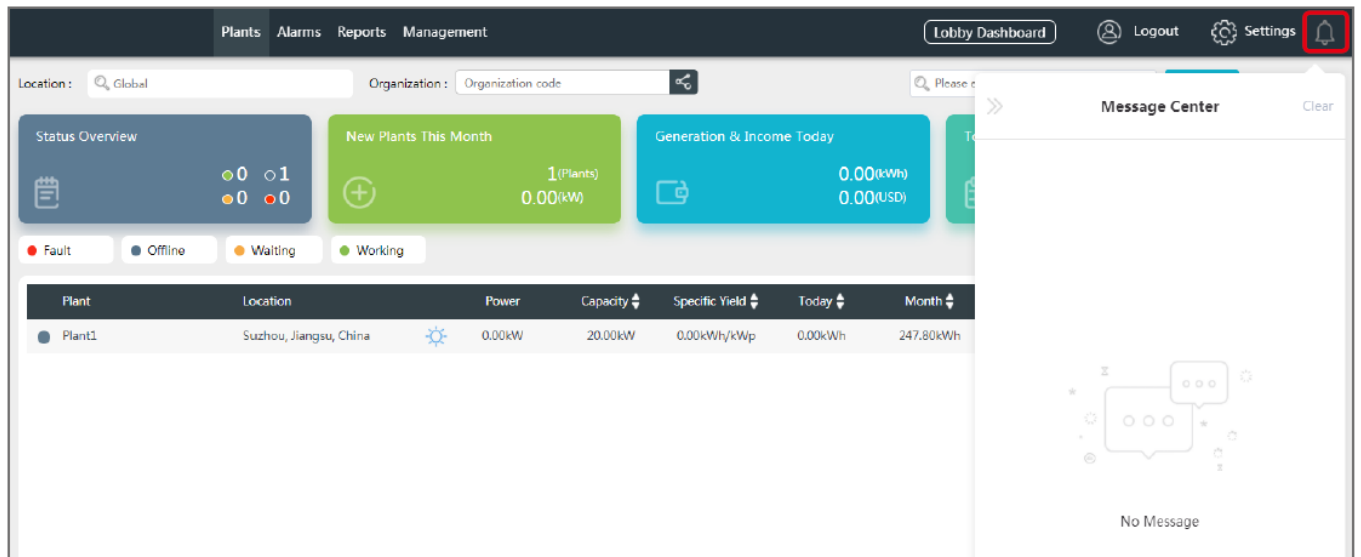
Note: This setting will prevent Owner from receiving alarm messages

Reset

Save Changes

Check Messages

Click to check after finish message setting.



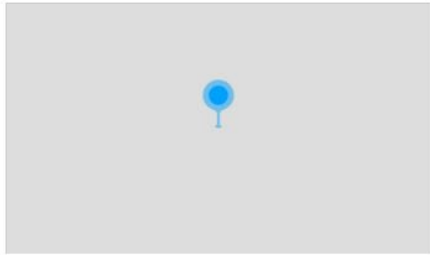
## Setting Dashboard

### Set Basic Info about Dashboard

- **Step 1:** Select Settings > System Setting > Dashboard, and enter into the setting page.
- **Step 2:** Set the displaying info of the Dashboard, and click Save Changes.

### Basic Setting:

Default map of Lobby Dashboard (Drag or zoom the map) : [China](#)



Lobby Dashboard Carousel Form

☒ Nine-square grid ☐ List

Lobby Dashboard Carousel List

☐ Generating Plants ☒ All plants

Lobby Dashboard Carousel Frequency

5 Sec.

### Construction & Plan:

Construction & Plan

Connected  Plants, Capacity  MW

☒ Automatic system calculation

Constructing  Plants, Capacity  MW

Planning  Plants, Capacity  MW

### Lobby Dashboard Module Customization:

03/05/2018 Thursday Sunny

GOODWE SEMS PORTAL

Total Yield 0 6 8 6 6 3 6 3 kWh

Total Revenue 0 8 8 8 8 8 8 8 USD

**Construction & Plan**

- Connected 334MW
- Constructing 310MW
- Planning 234MW

Inverter: 342532  
Module: 2342345

**Plant Classification**

- Commercial Rooftop 200MW
- Ground-Mounted 300MW
- Residential 100MW
- Poverty Alleviation 400MW

**Environmental Contribution**

CO<sub>2</sub> Reduction(Ton) 234234

Planted Trees 132344

Coal Savings(Ton) 13234566

**Generation Statistics**

Yield of Last 12 Months: 234234 kWh

**Plant Ranking**

Ranking	Plant	Equivalent Hours	Status
1	Chengdu Hi...	3.6	Green
2	hangdu Hi...	3.6	Green
3	Chengdu Hi...	3.6	Red
4	Chengdu Hi...	3.6	Grey

**Newest Plants**

Chengdu High-Tech Plaza Plant 20MW  
Connection Successful

Plants Status Alarms Reports

Carousel ON

Reset Save Changes

## Set Logo in the System and Dashboard

- Step 1:** Select Settings > System Setting > Logo, and enter into the setting page.
- Step 2:** Set the Logo displayed on the monitoring system or Dashboard, then click Save Changes.

**Dashboard Logo Setting:**

Lobby Dashboard Logo

+

Please upload a picture with a minimum size of 430x48

**System Logo Setting:**

System Logo

+

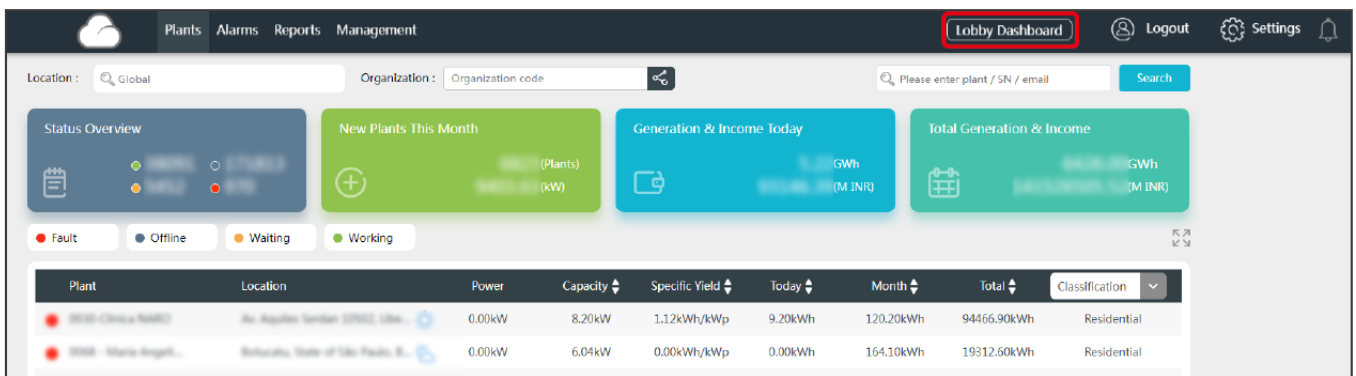
Please upload a picture with a minimum size of 210x46.

Reset

Save Changes

## Check Dashboard Info

You can click Lobby Dashboard to check after finishing the Dashboard Info Setting.



## Examples of Dashboard:



## Setting Income and Carbon Emission

- Step 1:** Select Settings > System Setting > System, and enter into the setting page.

- **Step 2:** Enter the preferred settings, and click Save Changes.

This profit ratio of return setting is the default value for the rate of return of the power station, and does not affect the setting of the actual profit ratio of plant

Profit Ratio for Plant Setting:

Default Profit Ratio:

0.22

HKD/kWh

Coefficient of Environmental Contribution:

Settings are only valid for your organization

Coefficient of Environmental Contribution

1 kWh =

0.997

kg CO<sub>2</sub> Reduction

1 kWh =

0.05465

Trees

1 kWh =

0.404

kg Coal

Reset

Save Changes

## Setting Date Format

- **Step 1:** Select Settings > My Settings > Personal Settings, and enter into the setting page.
- **Step 2:** Set the format of date, and click Save Changes.

**Date Setting:**

Date Format: 

MM.DD.YYYY

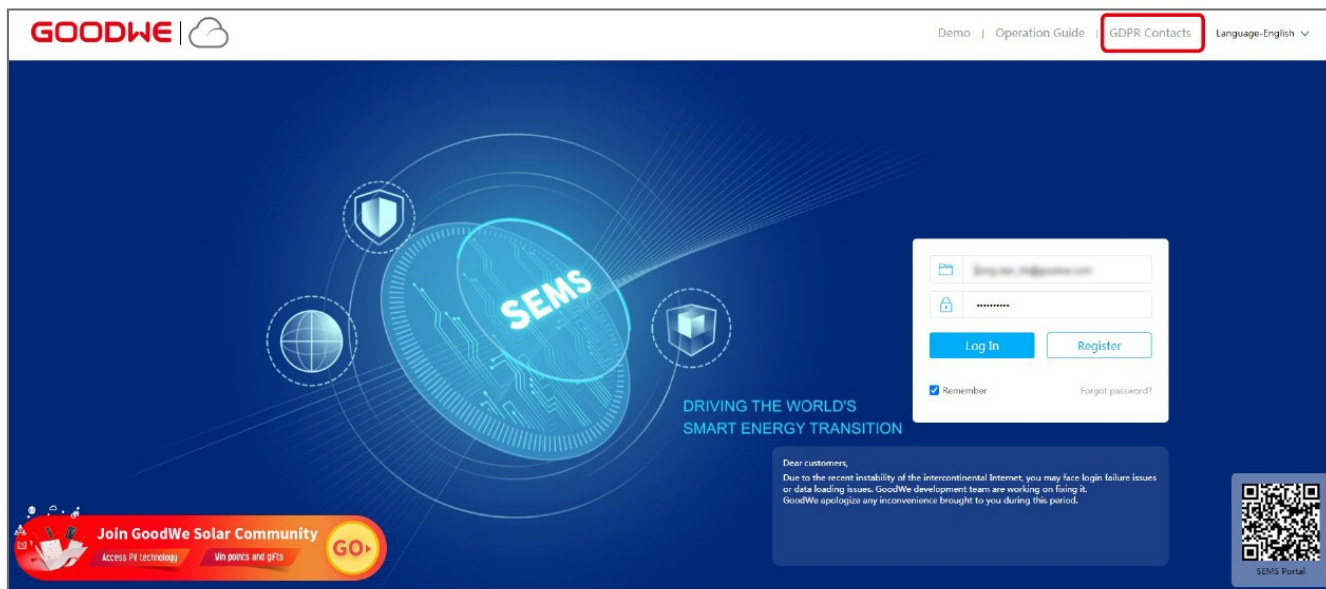
Reset

Save Changes

## FAQs

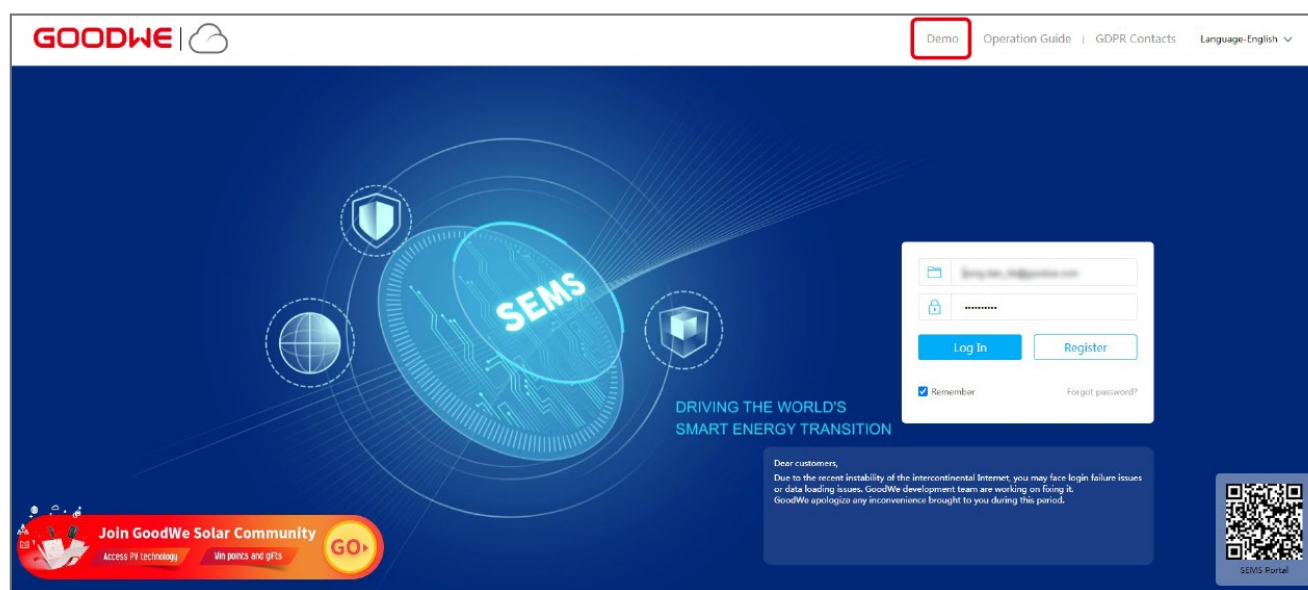
## How to check the Privacy Info?

- **Step 1:** Click GDPR Contact to find the contact information of different regions for help.



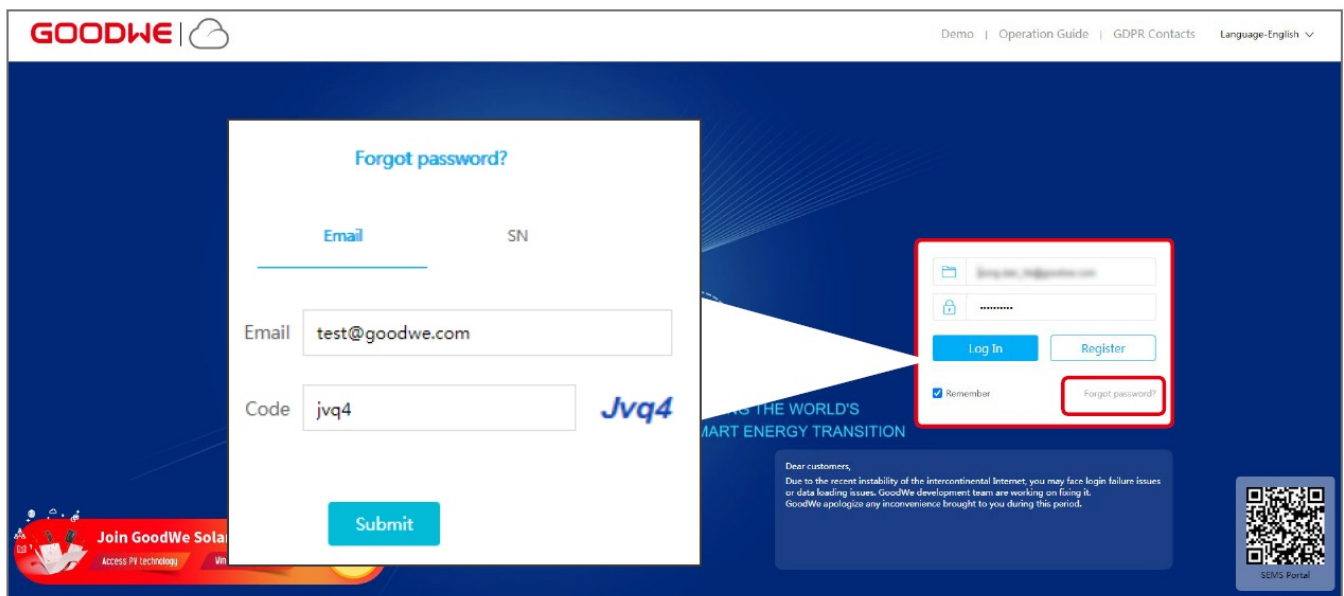
## How to Use Demo?

- **Step 1:** Click Demo. The Demo interface displays contents with Browser account, which is for reference only.



## How to Reset a Forgotten Password?

- **Step 1:** Click Forgot password and enter into the setting page.
- **Step 2:** There are two authentication ways to find the password: one is by Email and the other is by Device SN.

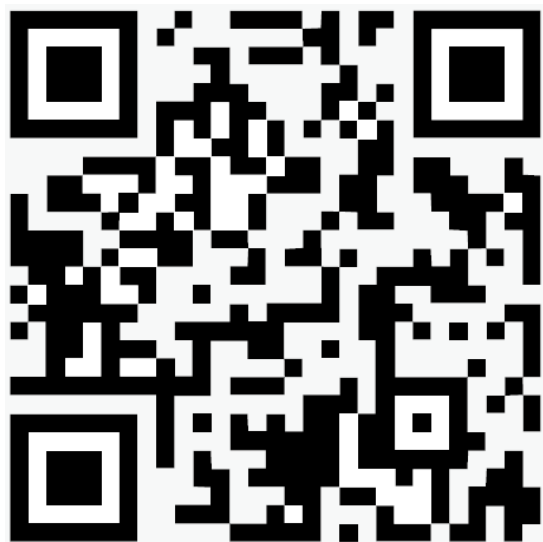


## How to Modify Account?

- **Step 1:** Select Settings > My Settings > My Account and enter into the setting page.
- **Step 2:** Modify the registering Email or password based on your demanding, or add a secondary account.

Email	*****@goodwe.com	<a href="#">Change</a>
Password	*****	<a href="#">Change</a>
Organization code	G*****	
Secondary Account		<a href="#">Add</a>

After the primary and secondary accounts are bound, the primary account will have all the permissions of the secondary account



GoodWe Website



No. 90 Zijin Rd., New District, Suzhou, 215011, China



[www.goodwe.com](http://www.goodwe.com)

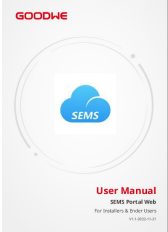


[service@goodwe.com](mailto:service@goodwe.com)



Local Contacts

Documents / Resources

	<p><a href="#">GOODWE SEMS Portal Web</a> [pdf] User Guide SEMS Portal Web</p>
---	--

References

- [W](#) \_\_\_\_\_
- [W](#) [GoodWe: Smart Energy Innovator](#)
- [GOODWE SEMS PORTAL](#)