



GOODWE 0134841 WiFi Kit Communication Module Installation Guide

[Home](#) » [GOODWE](#) » GOODWE 0134841 WiFi Kit Communication Module Installation Guide 

Contents

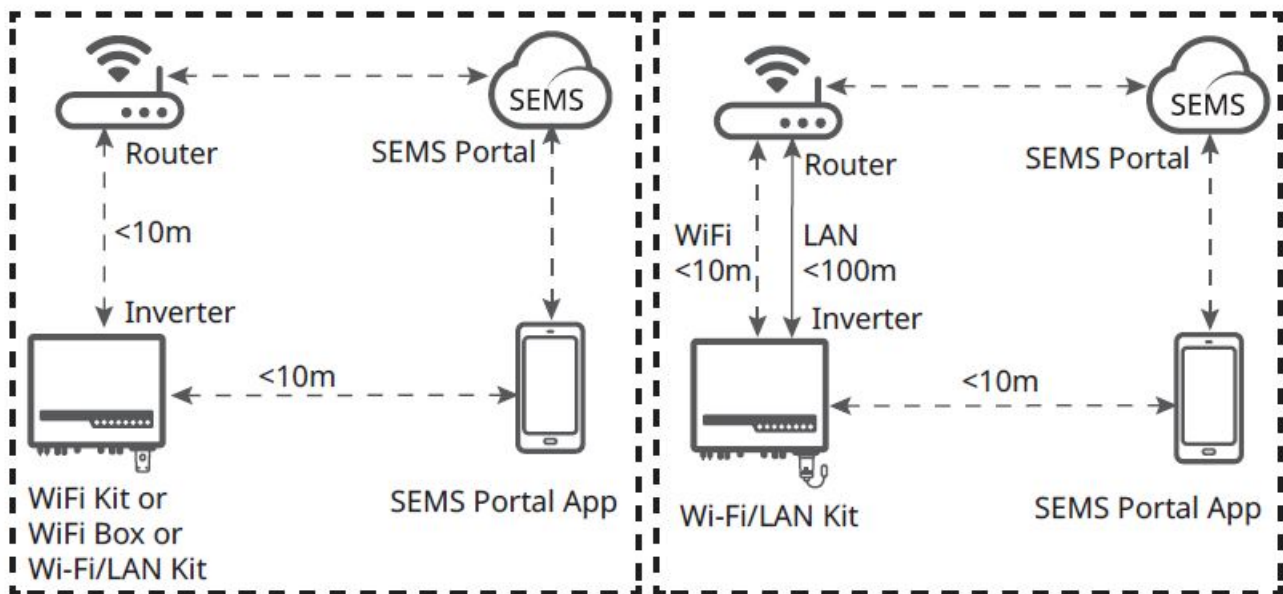
- [1 GOODWE 0134841 WiFi Kit Communication Module](#)
- [2 Applications](#)
- [3 Installation](#)
- [4 Power On](#)
- [5 Commissioning](#)
- [6 Commissioning via Web](#)
- [7 Password Setting](#)
- [8 Device Replacement](#)
- [9 Troubleshooting](#)
- [10 Technical Data](#)
- [11 Documents / Resources](#)
 - [11.1 References](#)
- [12 Related Posts](#)

GOODWE

GOODWE 0134841 WiFi Kit Communication Module

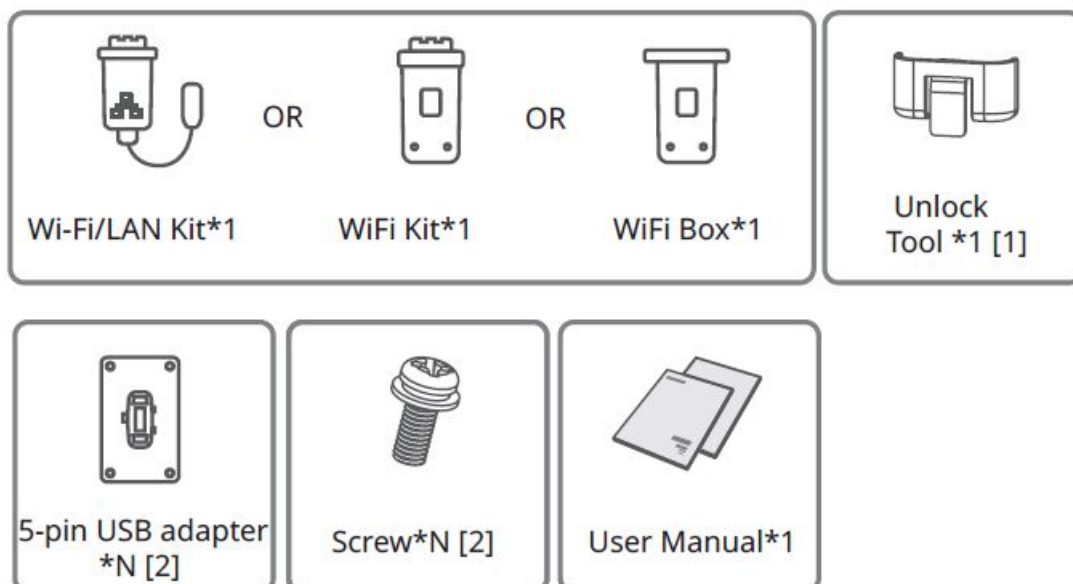


Applications



- Communication Network via WiFi
- Communication Network via LAN

Installation

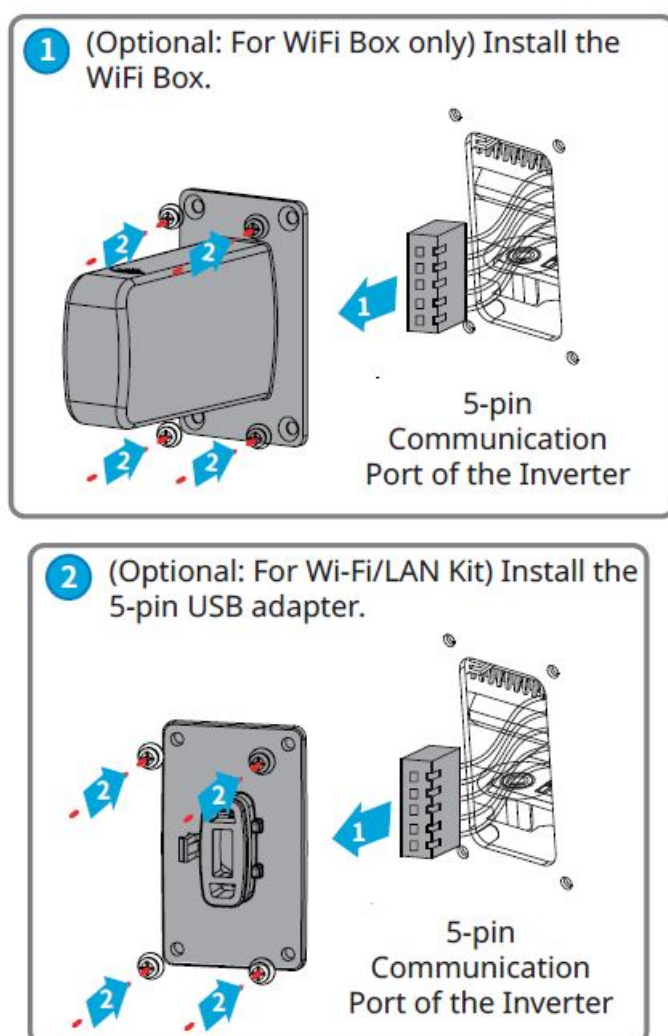


Packing List

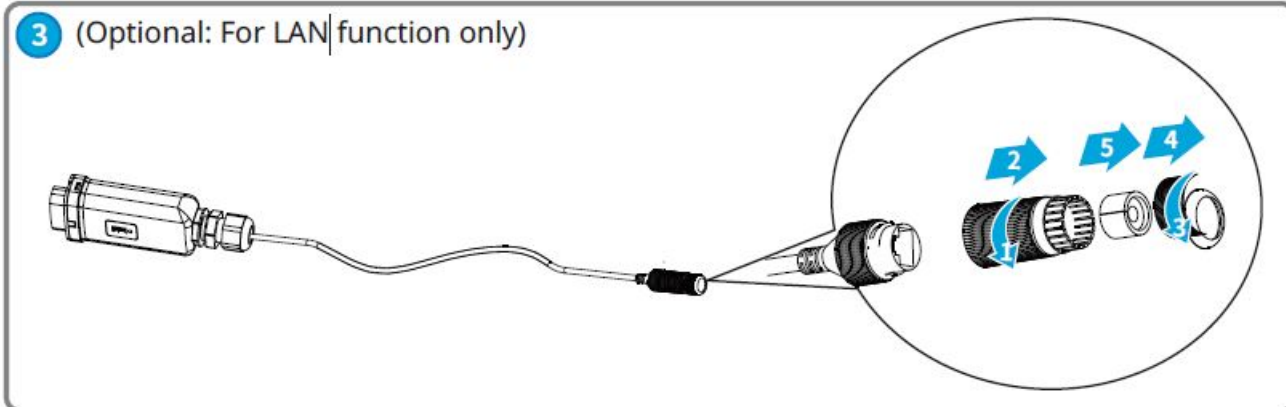
- : For Wi-Fi/LAN Kit and WiFi Kit.
- : N=Quantity depends on the Wi-Fi/LAN Kit configuration.

Installing the module

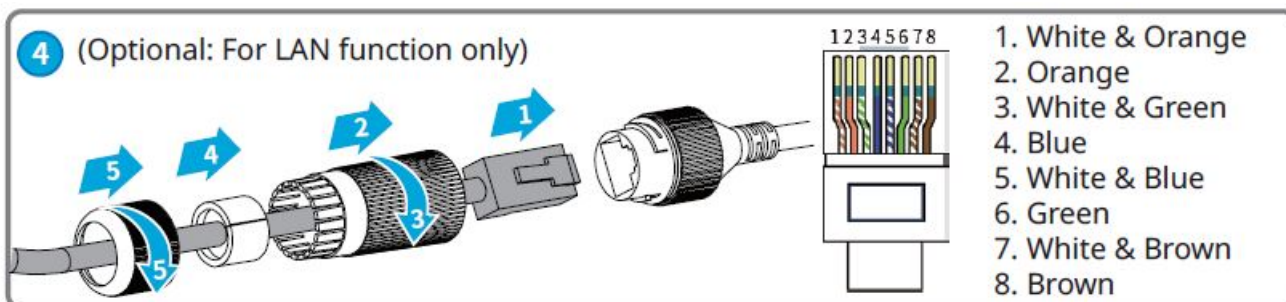
Note: This device should be installed and operated with a minimum distance of 20 cm between the radiator and your body.



1. (Optional: For WiFi Box only) Install the WiFi Box.
2. (Optional: For Wi-Fi/LAN Kit) Install the 5-pin USB adapter.



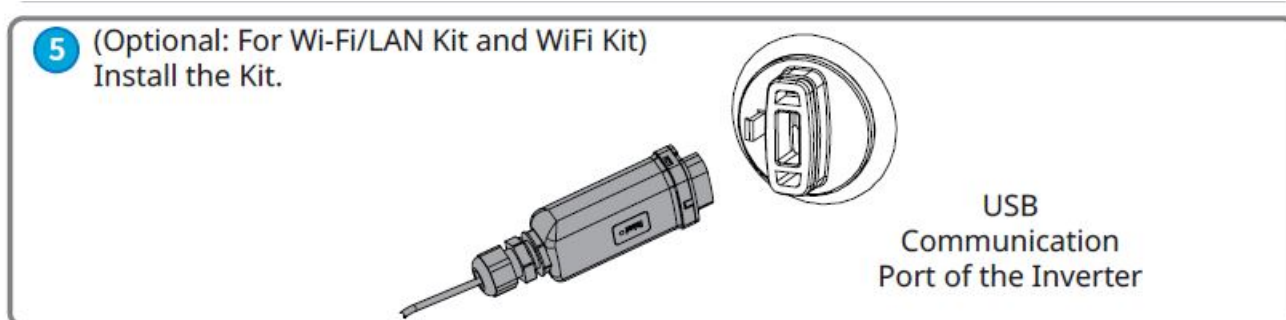
3. (Optional: For LAN function only)



4. (Optional: For LAN function only)

1. White & Orange
2. Orange
3. White & Green
4. Blue
5. White & Blue
6. Green
7. White & Brown
8. Brown

5. (Optional: For Wi-Fi/LAN Kit and WiFi Kit) Install the Kit.



Power On

Step 1 Power on the inverter.

Step 2 Power on the router.

Step 3 Check the communication status of the Kit through indicators.

Note: Check the indicators on the Wi-Fi/LAN Kit and the inverter to confirm the communication status of the kit.

Wi-Fi/LAN Kit

Indicator	Color	Status	Description
Power	Green	ON	The Wi-Fi/LAN Kit is powered on.
		OFF	The Wi-Fi/LAN Kit is restarting or not powered on.
COM	Blue	ON	Proper communication on WiFi mode or the WiFi AP hotspot is connected .
		OFF	<ul style="list-style-type: none"> • Improper communication on WiFi mode. • Proper communication on LAN mode. • The kit is restarting.

WiFi Kit

Indicator	Color	Status	Description
Power	Green	ON	The WiFi Kit is powered on.
		OFF	The WiFi Kit is restarting or not powered on.
COM	Blue	ON	The WiFi AP hotspot is connected.
		OFF	<ul style="list-style-type: none"> • Improper communication on WiFi Kit. • The kit is restarting.

Commissioning



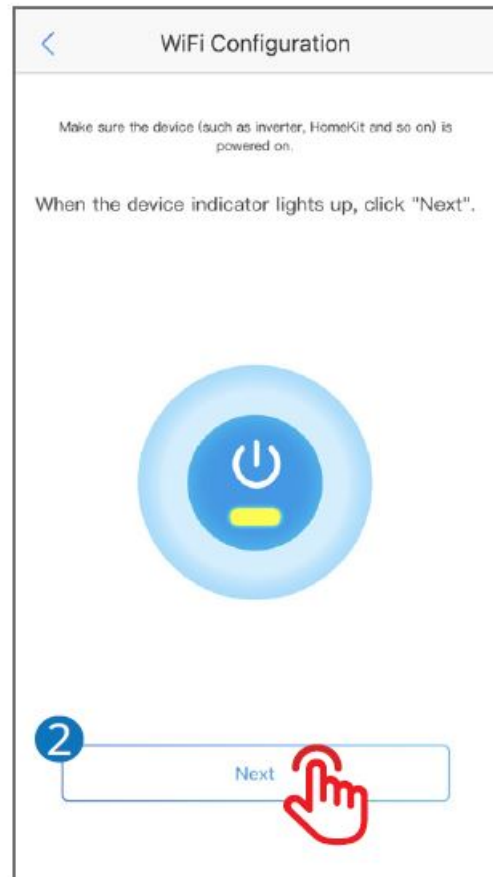
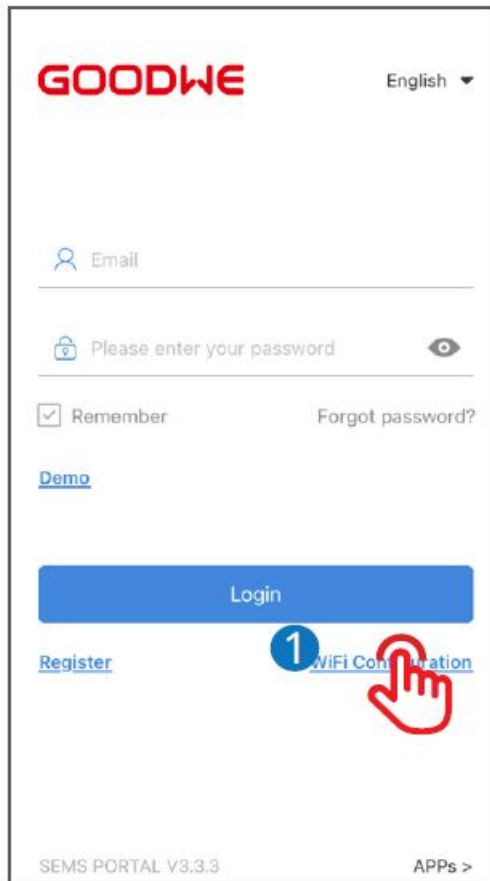
SEMS Portal App

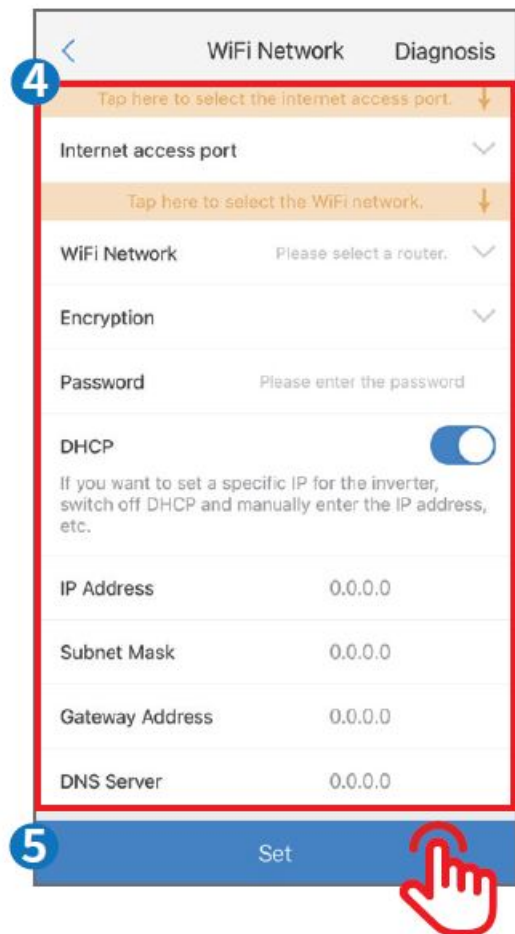
Commissioning via SEMS Portal App

Step 1 Download and install the SEMS Portal App.



Step 2 Connect the app and the inverter.





Step 3 Network Commissioning of the Kit.

1 Log in to 10.10.100.253

Your password will be sent unencrypted.

2 User Name admin

3 Password admin

4 Log In

Mode Settings

5 AP Settings

STA Settings

Device Management

STA Interface Parameters

6 AP's SSID WiFi_Burn-in Search

7 MAC Address (Optional)

Security Mode WPA2PSK

WPA Algorithms AES

Pass Phrase

8 Submit Reset

9 WAN Connection Type

WAN Connection Type Static IP

Static Mode

IP Address 192.168.10.10

Subnet Mask 255.255.255.0

Gateway 192.168.10.11

Dns 192.168.10.11

10 Submit Reset

Mode Settings

AP Settings

11 STA Settings

Device Management

Restart Module

12 Restart

Load Factory Defaults

Load Factory Defaults Load Default

Update Firmware

Current Version V1.2.1.16

Location Choose File no fil...lected

Submit

Note: After setting the WiFi Network, the Wi-Fi/LAN Kit will restart automatically and the indicator will be off temporarily. The indicator will be on after restarting.

No.	Parameters	Description
1	Internet access port	For Wi-Fi/LAN Kit only. Select Wi-Fi or LAN .
2	WiFi Network	For WiFi mode only. Set the parameters based on the router network information.
3	Encryption	
4	Password	
5	DHCP	<ul style="list-style-type: none"> • Enable DHCP when the router is in dynamic IP mode. • Disable DHCP when a switch is used or when the router is in static IP mode.
6	IP Address	<ul style="list-style-type: none"> • Do not configure the parameters when DHCP is enabled. • Configure the parameters according to the router or switch information when DHCP is disabled.
7	Subnet Mask	
8	Gateway Address	
9	DNS Server	

Commissioning via Web

1 Log in to 10.10.100.253

Your password will be sent unencrypted.

2 User Name admin

3 Password admin

4 Log In

Wizard
Advanced
Management

Device information

Firmware version	V1.1.2.1
MAC address	*****
Wireless AP mode	Enable
SSID	Solar-WiFi123W1234
IP address	10.10.100.253
Wireless STA mode	Enable
Router SSID	TP-LINK_Network
Encryption method	WPA2PSK
Encryption algorithm	AES

Cannot join the network, maybe caused by:

router doesn't exist, or signal is too weak, or password is incorrect.

★Help: Wizard will help you to complete setting within one minute.

5 Start Setup

Please select your current wireless network:

	SSID	AUTH/ENCRY	RSSI	Channel
6	Solar-WiFi205G0484	*****	100	6
	TP-LINK_Network	*****	100	6
	Solar-WiFi219W0020	*****	100	6
	Solar-WiFi203W0661	*****	98	1
	Solar-WiFi181W1234	*****	98	6
	CODING-LINK	*****	88	1
	*****	*****	*****	*****

Refresh

★Note: When RSSI of the selected WiFi network is lower than 30%, the connection may be unstable, please select other available network or shorten the distance between the device and router.

If your wireless router does not broadcast SSID, please click 'Next' and add a wireless network manually.

Back 7 Next

Add wireless network manually:

Network name (SSID)

TP-LINK_Network

Encryption method

WPA2-PSK

Encryption algorithm

AES

Please enter the wireless network password:

Password

••••••••

☐

Show psk

★**Note:** case sensitive for SSID and Password.

Please make sure all parameters of wireless network are matched with router, including password.

Back

Next

Save success!

The current configuration will take effect after restart.

If you still need to configure the other pages of information, please go to complete your required configuration.

Configuration is complete, you can go to the Management page, click on the restart device "OK" button.

Confirm to complete ?

Back

Complete

Network Commissioning of Wi-Fi/LAN Kit

Note: The indicator will be off temporarily when the Wi-Fi/LAN Kit is restarting and be on again after restarting.

No.	Parameters	Description
1	AP'S SSID	For WiFi mode only. Click Search to select the router and click Apply .
2	Security Mode	For WiFi mode only. Set the parameters based on the router network information.
3	WPA Algorithms	
4	Pass phrase	
5	WAN Connection Type	<ul style="list-style-type: none"> Select DHCP(Auto config) when the router is in dynamic IP mode. Select Static IP when a switch is used or when the router is in static IP mode
6	IP Address	<ul style="list-style-type: none"> Do not configure the parameters when WAN Connection Type is DHCP(Auto config). Configure the parameters according to the router or switch information when WAN Connection Type is Static IP.
7	Subnet Mask	
8	Gateway Address	
9	DNS Server	

Network Commissioning of WiFi Kit/WiFi Box

No.	Parameters	Description
1	Network name (SSID)	Set the parameters based on the router network information.
2	Encryption method	
3	Encryption algorithm	
4	Password	

(Optional) Continue the following steps when the router is in static IP mode.

12 Wizard
Advanced
Management

Access point setting

Network name(SSID)

Encryption mode

Encryption algorithm

Password(8 to 63 characters)

★Note:config the device's parameters under the access point mode.

Save

DHCP setting for STA

IPDHCP Mode **13**

14 IP address

Subnet mask

Gateway address

DNS server address

★Note:After changing the setting,the device must be restarted.

15 **Save**

Saved Successfully!

Configurations will take effect after restart.
After restart, you will need to re-login the configuration interface for other settings, so it is recommended to restart after completing all settings.
Please click [Restart] to restart now, or click [Back] to continue setting.
You can restart after all configuration.

16 **Restart** **Back**

No.	Parameters	Description
1	IPDHCP Mode	Select STATIC .
2	IP Address	Set the parameters of the WiFi Kit based on the router network information.
3	Subnet Mask	
4	Gateway Address	
5	DNS Server	

Password Setting

Log in using the initial password for the first time and change the password as soon as possible. To ensure account security, you are advised to change the password periodically and keep the new password in mind.

Change the password of the Wi-Fi/LAN Kit.

1
Mode Settings
AP Settings
STA Settings
Device Management

Wireless Network

Network Mode
11b/g/n mixed mode

Network Name(SSID)
Solar-WiFi203W0i
Hide

☐

BSSID
34:EA:E7:D4:6A:88

Frequency (Channel)
Auto

Submit
Reset

Solar-WiFi203W0013

Security Mode
WPA2-PSK

WPA

WPA Algorithms
TKIP
AES

TKIPAES

Key
2

3
Submit
Reset

Mode Settings
AP Settings
STA Settings
Device Management

Set successfully, restart to use new setting.

Restart button in Device Management 4

Mode Settings
AP Settings
STA Settings
Device Management

Restart Module

Restart Module
5
Restart

Load Factory Defaults

Load Factory Defaults
Load Default

Note: The indicator will be off temporarily when the Wi-Fi/LAN Kit is restarting and be on again after restarting. Reconnect WiFi after resetting the Wi-Fi/LAN Kit.

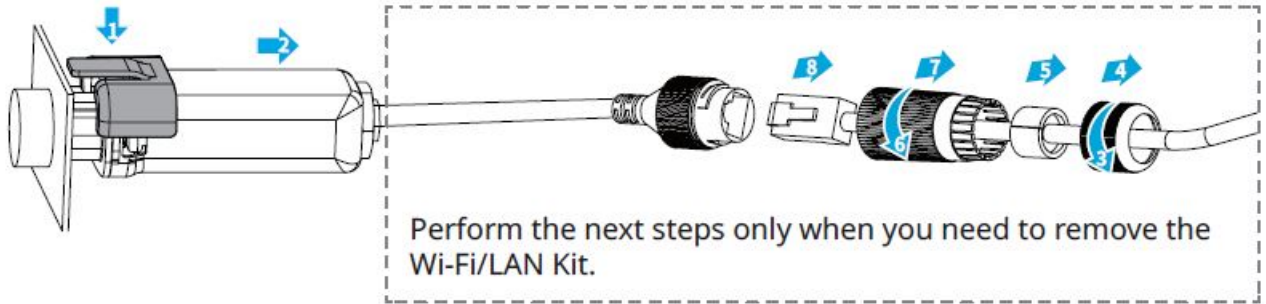
Change the password of the WiFi Kit/WiFi Box

The screenshot displays a configuration interface with a left sidebar and a main content area. The sidebar contains three items: 'Wizard' (with a blue circle containing the number 1), 'Advanced' (highlighted with a red rectangle), and 'Management'. The main content area is titled 'Access point setting' and includes several configuration fields: 'Network name (SSID)' with a text input labeled 'Network name'; 'Encryption mod' with a dropdown menu showing 'WPA/WPA2-PSK'; 'Encryption algorithm' with a dropdown menu showing 'AES'; and 'Password (8 to 63 characters)' with a text input field (highlighted with a red rectangle and a blue circle containing the number 2). Below these fields is a note: '★Note: config the device's parameter under the access point mode.' followed by a 'Save' button (highlighted with a red rectangle and a blue circle containing the number 3). The section 'DHCP setting for STA' follows, with fields for 'IP DHCP Mode' (dropdown showing 'DHCP'), 'IP address' (192.168.204.149), 'Subnet mask' (255.255.255.0), 'Gateway address' (192.168.204.254), and 'DNS server address' (80.59.16.0). A final note at the bottom states: '★Note: After changing the setting, the device must be restarted.' with a 'Save' button below it.

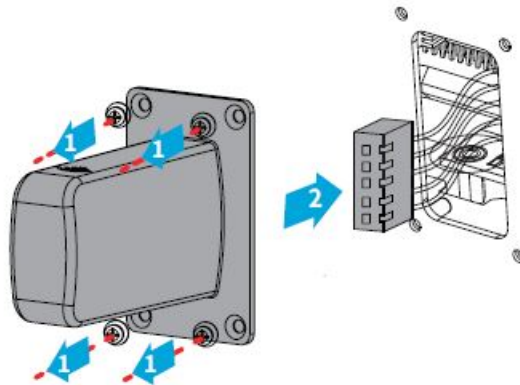
Device Replacement

1. Step 1 Prepare the new device before replacing the device.
2. Step 2 Remove the device using the Unlock Tool.
3. Step 3 Install the new device.
4. Step 4 Refer to the device Quick Installation Guide to configure the device.

For Wi-Fi/LAN Kit and WiFi Kit.



For WiFi Box.



Troubleshooting

No.	Problem	Solutions
1	Cannot find Solar-WiFi**	<ol style="list-style-type: none"> 1. Make sure that the inverter is powered on and the Wi-Fi/LAN Kit is connected properly. 2. Make sure that the smart device is within the communication range of the Wi-Fi/LAN Kit. 3. Restart the inverter.
2	Unable to connect to Solar-WiFi**	<ol style="list-style-type: none"> 1. Enter the password: 12345678. 2. Make sure that no other smart device is connected to Solar-WiFi**. 3. Restart the inverter and reconnect Solar-WiFi**. 4. Make sure the password is correct.
3	Cannot log in to 10.10.100.253	<ol style="list-style-type: none"> 1. Switch browsers like Google Chrome, Firefox, IE, Safari. 2. Restart the inverter and reconnect the WiFi.
4	Cannot find router SSID	<ol style="list-style-type: none"> 1. Put the router nearer to the inverter. Or add some WiFi relay devices. 2. Check if the channel number of router is higher than 13. If yes, modify it into a lower number at router configuration page.
5	WiFi LED indicator blinks twice continuously with all configuration steps done	<ol style="list-style-type: none"> 1. Restart the inverter. 2. Check if the SSID, encryption method, encryption algorithm and password on WiFi configuration page is the same with that of Wireless Router, if it is different, please modify it. 3. Restart Wireless Router. 4. Move Wireless Router closer to the inverter or use a wireless repeater to enhance WiFi signal.
6	WiFi LED indicator blinks four times continuously when all configuration steps done	<ol style="list-style-type: none"> 1. Connect smart device to network and access to SEMS Portal App to check if the inverter is online. 2. Restart Wireless Router and the inverter.

Technical Data


Model		Wi-Fi/LAN Kit	WiFi Kit	WiFi Box
General Data	Input Voltage	5V		
	Power Consumption	£ 2W		
	Dimension(L x W x Dmm)	119 x 49 x 32	96 x 49 x 32 or 96 x 46 x 29	71.5 x 65×39.5
	Operating temperature	-30 ~ 60°C		
	Operating Humidity	0 ~ 100% RH (No Condensation)		
	Operating Altitude	<4000m		
	Ingress Protection Rating	IP65		
Comm Data	Port	RJ45	—	
	Extension Cable of LAN	0.5m	—	
	Communication	LAN or WiFi	WiFi	
	Transmission Rate	UART: 115200bps Ethernet: 10Mbps /100Mbps	UART: 9600bps	
	Max. Network Cable Transm ission Distance	100m	—	
	Frequency Range	2.412GHz-2.472GHz		
	Supported Standards	802.11 b/g/n		
	Supported Device	Router or Switch	Router	
	RF Outpower	< 20 dBm		
	Software Data	Configuration	App or Web	
Language		English		
Working Mode		AP/STA/AP+STA		

EU Declaration of Conformity

GoodWe Technologies Co., Ltd. hereby declares that the communication device sold in the European market meets the requirements of the following directives:

- Radio Equipment Directive 2014/53/EU (RED)
- Restrictions of Hazardous Substances Directive 2011/65/EU and (EU) 2015/863 (RoHS)
- Waste Electrical and Electronic Equipment 2012/19/EU
- Registration, Evaluation, Authorization and Restriction of Chemicals (EC) No 1907/2006 (REACH)

You can download the EU Declaration of Conformity on <https://en.goodwe.com>.

 <p>Quick Installation Guide Communication Module (0134841-01 & 0134841-02 & 0134841-03) V1.1 (2023-05-27)</p>	<p>GOODWE 0134841 WiFi Kit Communication Module [pdf] Installation Guide 0134841, WiFi Kit Communication Module, 0134841 WiFi Kit Communication Module</p>
---	--

References

- [W](#) _____
- [W](#) [GoodWe: Smart Energy Innovator](#)