



# Goodmans HERITAGE PORTABLE Portable Digital Radio with Bluetooth & Spotify Connect Instruction Manual

[Home](#) » [Goodmans](#) » Goodmans HERITAGE PORTABLE Portable Digital Radio with Bluetooth & Spotify Connect Instruction Manual 

## Contents

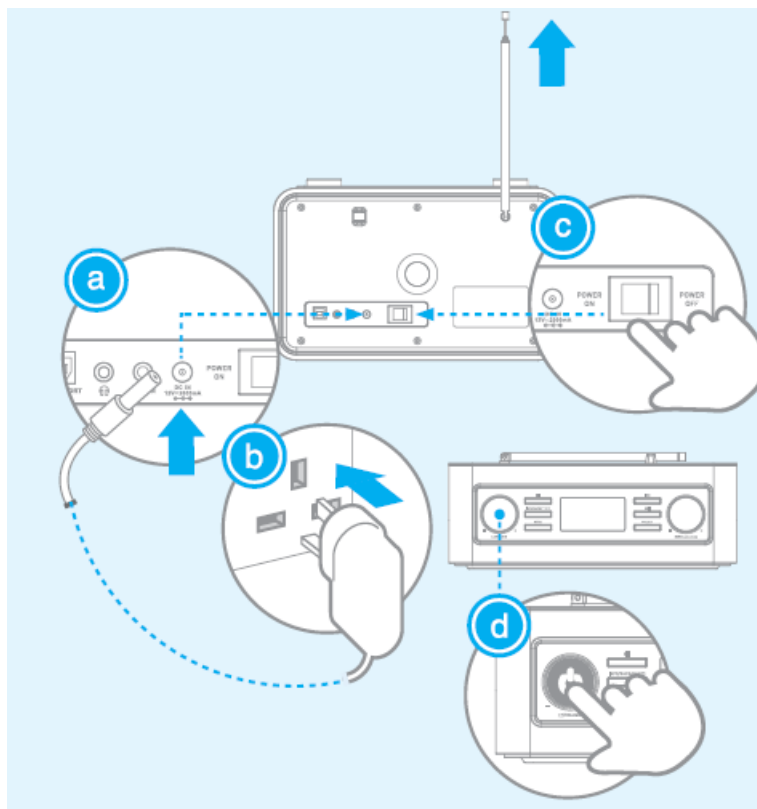
- 1 Goodmans HERITAGE PORTABLE Portable Digital Radio with Bluetooth & Spotify Connect
- 2 GETTING STARTED:
- 3 SETUP WIZARD
- 4 LISTENING TO INTERNET RADIO
- 5 PLAY MUSIC VIA SPOTIFY CONNECT
- 6 BLUETOOTH / NFC
- 7 LISTENING TO DAB RADIO
- 8 USING THE INTERNAL BATTERY
- 9 UNDOK SMART APP CONTROL
- 10 Documents / Resources
  - 10.1 References
- 11 Related Posts



**Goodmans HERITAGE PORTABLE Portable Digital Radio with Bluetooth & Spotify Connect**




## GETTING STARTED:



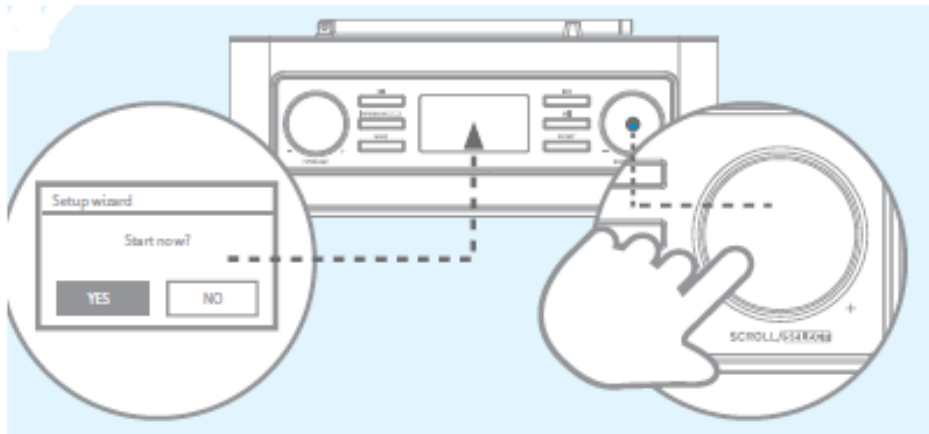
- Connect the power cord into the DC-In socket.
- Connect the plug to the mains socket.
- Switch the main power switch to “POWER ON”.



- Press  to turn the radio on. “Setup wizard” will be shown when switched on for the first time.
- **NOTE:** Keep connected to mains power for 6hrs to allow the battery to be fully charged.

## SETUP WIZARD

When your Heritage Portable is started for the first time, it runs through a setup wizard to configure settings for date/time and network.



- Press the SCROLL/SELECT dial to start setup.
- Turn and then press the SCROLL/SELECT dial to set 12 or 24-hour format, synchronously update clock from DAB, FM, Network or No update. Keep network connection in all modes and select your network and insert the network password to connect. When establishing a connection via WPS, you can select “Push Button” to press the SCROLL/SELECT dial on your radio and WPS button on your WiFi router to establish a connection; or select “PIN” to enter the
- The 8-digit number is created by your radio into your router to establish the connection; also you can select “Skip WPS” if you are using a standard network password and then enter your password to complete the connection. When setup wizard is completed, press the SCROLL/SELECT dial to exit. “Main menu” will be shown with
- “Internet radio” being highlighted. Now, you can select your desired mode.  
**NOTE:** When used outside of network range, this product will always scan for a network connection when the “keep network connection” setting is selected during setup. In this case to disable the “keep network connection” go to MENU>MAIN MENU>SYSTEM SETTINGS NETWORK>”Keep Network connected” and set to NO.

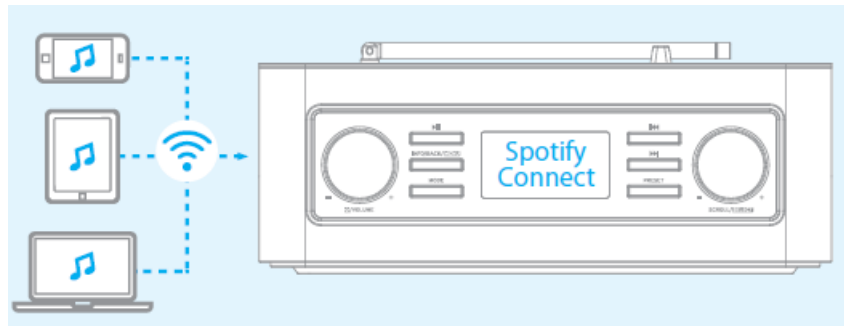
## LISTENING TO INTERNET RADIO

Mode “Internet Radio” lets you listen to thousands of global Internet radio stations and Podcasts.

- Press the SCROLL/SELECT dial to select “Internet radio” in main menu.
- Turn and then press the SCROLL/SELECT dial to select your desired Internet radio station or Podcast.

## PLAY MUSIC VIA SPOTIFY CONNECT

Your radio has Spotify Connect built-in, this lets you control the music on your radio using the Spotify App on your smartphone, tablet or PC.



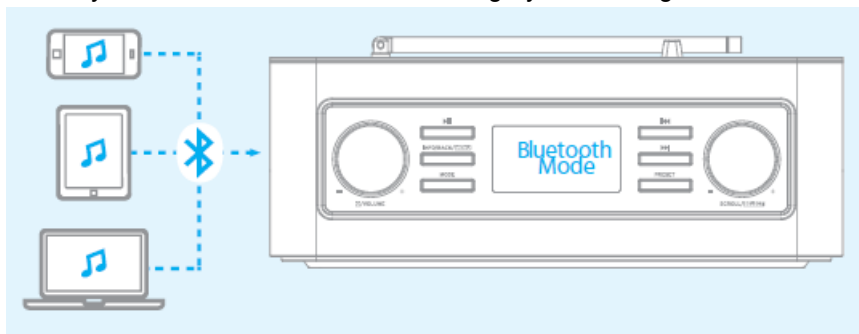
- The Heritage Portable radio must be connected to the same network as your smartphone or tablet. Open the Spotify App on your smartphone or tablet and play any song.
- Tap the song cover image at the bottom left corner of the screen, and then tap the Spotify Connect icon .



- Tap “Heritage P1” from the list.

## BLUETOOTH / NFC

You can play music from any Bluetooth-enabled device through your Heritage Portable.



### BLUETOOTH

- Press the MODE button until “Bluetooth Mode” appears on the screen.
- Enable bluetooth on your device and select your Heritage Portable from the devices list. It will show as ‘Heritage P1’.
- Select the song you want and press play.

### NFC

- Press the MODE button until “Bluetooth” appears on the screen.
- Make sure your smartphone is set to visible and turn on NFC.



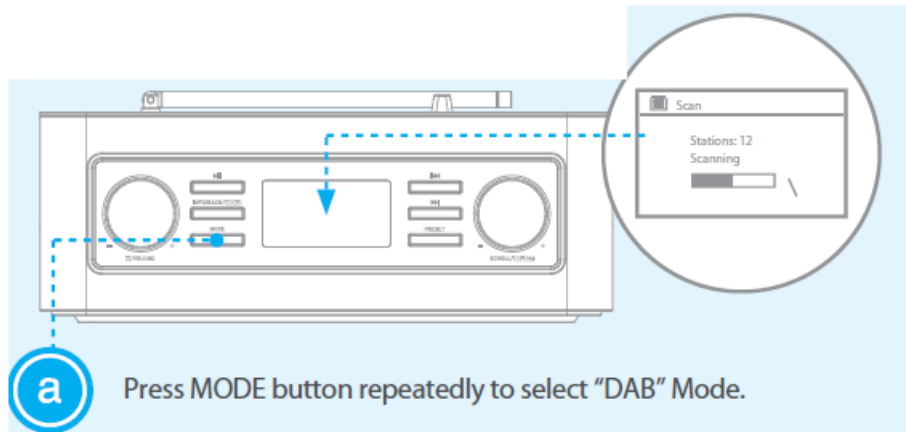
- Hold close or TAP your smartphone to the (NFC logo) mark located on right side of your product. Note:

If pairing is not successful you may need to rotate your smartphone while on the mark located on right side panel of the product.



## LISTENING TO DAB RADIO


Mode “DAB” lets you listen to all digital radio stations in clear crystal sound, with better reception and more choice. To check if you have coverage in your area, visit: [www.getdigitalradio.com](http://www.getdigitalradio.com)



- For initial use, your radio will carry out a full scan and store available DAB stations in memory. Make sure the antenna is fully extended.
- Turn and then press the SCROLL/SELECT dial to listen to your desired DAB stations.

## USING THE INTERNAL BATTERY

- Allow 6hrs for the battery to be fully charged.
- To use the battery disconnect the power cable from the back of the Heritage Portable. Press the power switch

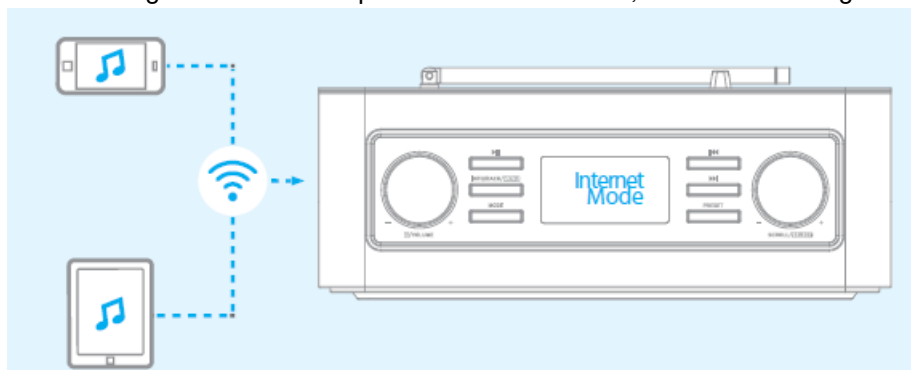
to “Power ON and then press  the button”.

- The product can run on battery for 8-10hrs at 2/3 volume.

**NOTE:** When in standby this product will use battery power as the screen and network settings are active. To save the battery when not in use switch the main power switch on the back to “Power OFF”.

## UNDOK SMART APP CONTROL

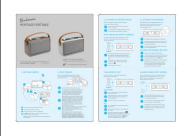
You can control the product using your smartphone with the UNDOK App installed. Multiroom and Control Volume, Mode & Stations using UNDOK for the products in the kitchen, bedroom or living room.



- Download UNDOK App from App Store for your iOS smartphone or download from Google Play for your Android smartphone.
- Connect your radio to the same W I-F I network as your smartphone. Start UNDOK App.
- All available devices will be listed. Tap your radio “Heritage P1” to connect to, then you can control your radio

by using your smartphone to switch mode, play music, etc.

## Documents / Resources

|   |   |
|---|---|
|  | <a href="#">Goodmans HERITAGE PORTABLE Portable Digital Radio with Bluetooth &amp; Spotify Connect</a> [pdf] Instruction Manual<br>HERITAGE PORTABLE, Portable Digital Radio with Bluetooth Spotify Connect |
|---|---|

## References

- [✔ DAB Digital Radio - Pure, Roberts, Stations, DAB, Evoke, In Car, Online, Portable, Digital Radios, Highway, One, Station, Sony](#)

Manuals+.