

GooDisplay USB Image Upload Operations Instructions

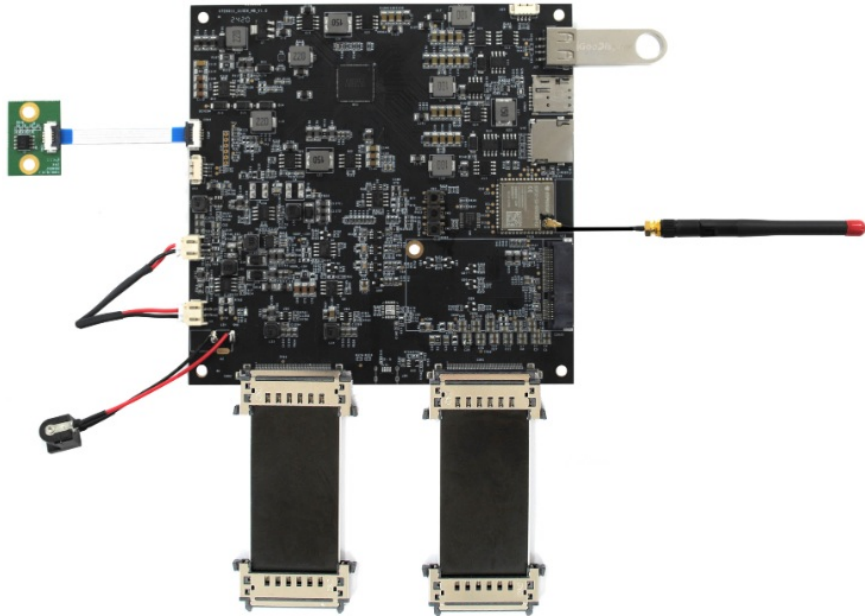
[Home](#) » [GooDisplay](#) » **GooDisplay USB Image Upload Operations Instructions**

Contents

- 1 GoDisplay USB Image Upload Operations
- 2 Connection Diagram for Driver Board
- 3 Introduction to Image Processing Software
- 4 Creating XT_Resources Image Resource Pack
- 5 USB Image Loading Process
- 6 Specifications
- 7 Frequently Asked Questions (FAQ)
- 8 Documents / Resources

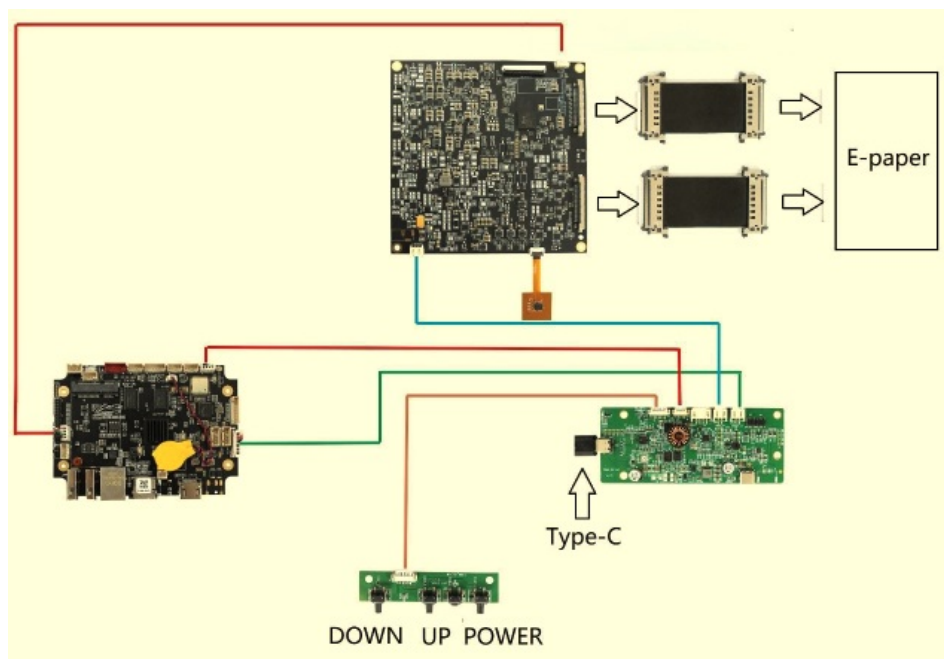


GooDisplay USB Image Upload Operations

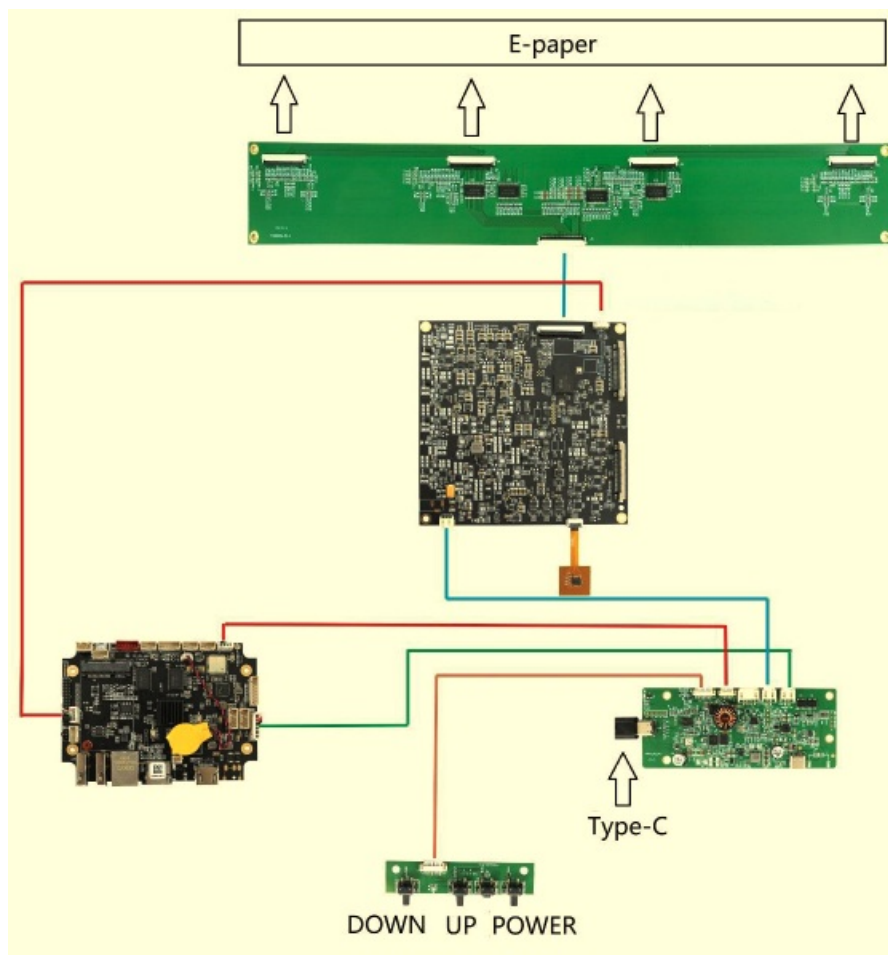


Connection Diagram for Driver Board

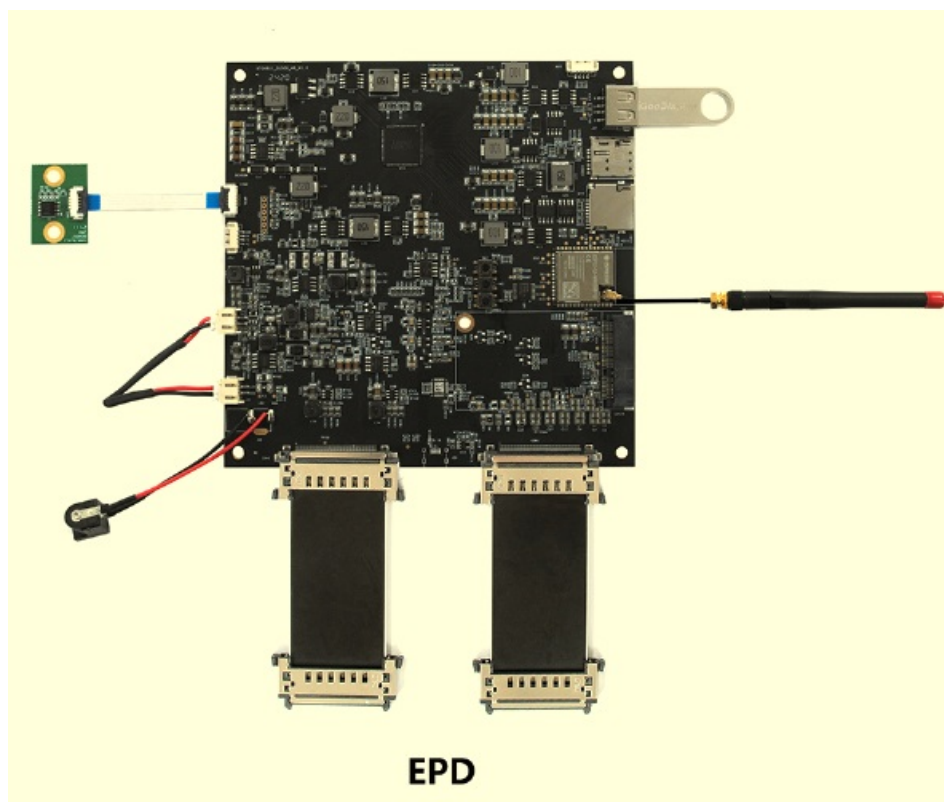
1. 25.3 inch GDEP253C01, GDEP253C02 Color Driver Board



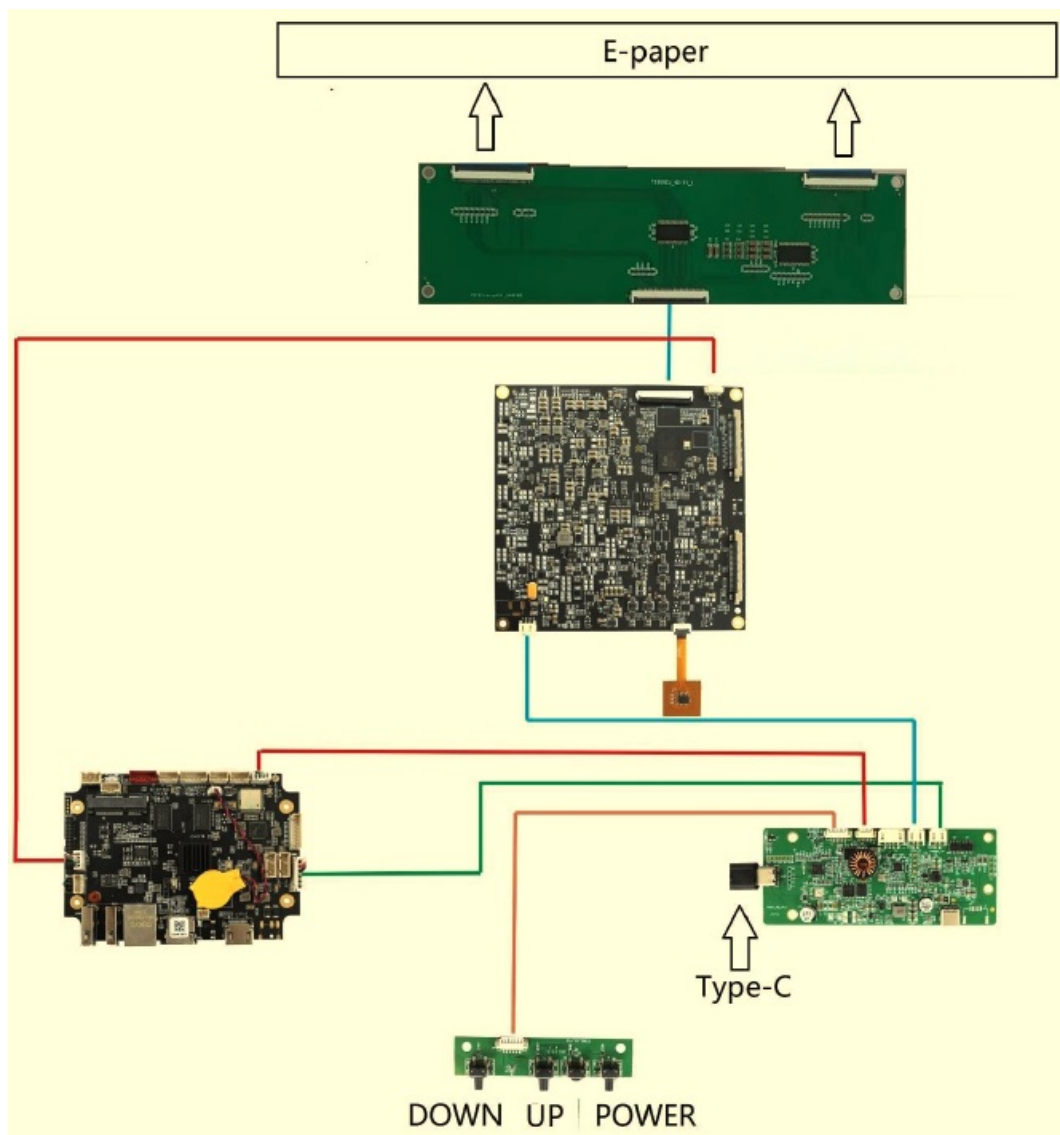
2. 31.2 inch GDEP312TT3 Black and White Driver Board



3. 31.5 inch GDEP315C01 Color Driver Board



4. 42 inch GDEP420T01 Black and White Driver Board



Introduction to Image Processing Software

Software Instructions

This manual mainly provides instructions for using the “xtacep” tool. The full name of the software is xtacepSetup-V2.10.0. Double-click the software to install it directly. It allows for the quick creation of the XT_Resources package for USB image loading, facilitating easy deployment and use by users.

Note: This software must be installed on a drive other than the C drive, and the installation directory should not contain any spaces.

Software Package Directory

Double-click the xtacep.exe file to open the software:

ACEP	2023/10/23 11:12	文件夹	
jre1.8.0_161	2023/10/23 11:12	文件夹	
Log	2023/10/23 11:12	文件夹	
unins000.dat	2023/10/23 11:12	DAT 文件	43 KB
unins000.exe	2023/10/23 11:11	应用程序	3,149 KB
xtacep.exe	2023/10/7 16:24	应用程序	3,433 KB

Software Operating Environment

This software can run on Windows 7.0 and above.

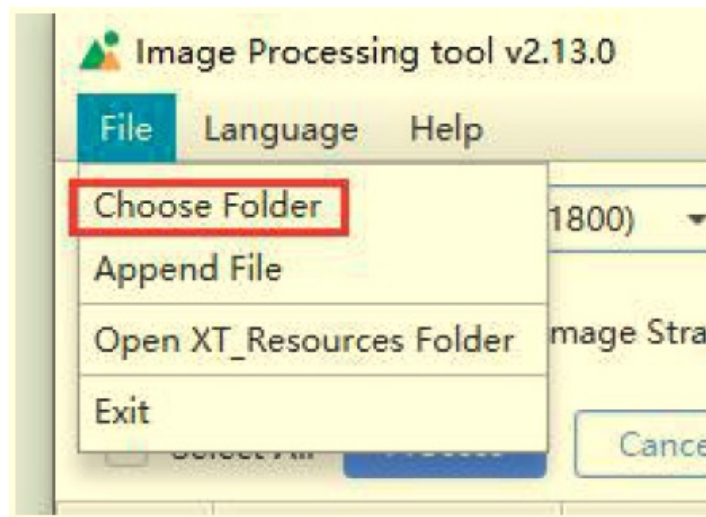
Prepare images that meet the following resolution specifications. Supported formats include bmp, png, jpeg, and jpg.

- **13.3 inch** 1600×1200
- **25.3 inch** 3200×1800
- **28 inch** 3840×1080
- **31.2 inch** 2560×1440
- **31.5 inch** 2560×1440
- **42 inch** 2880×2160

Note: For GDEP133C02 and GDEP315C01, you need to copy all files from the XT_Resources folder to the root directory of the USB drive.

Creating XT_Resources Image Resource Pack

1. "Choose Folder": Select the folder containing the images you want to process. You can choose any image path, but make sure that the path does not contain any spaces.



- **Note:** Images must not contain spaces, or they will not be recognized.

2. Select E-Paper Type (“EPD type”):

- “EC” for Black and White screens
- “EG” for ACEP Color screens
- “E6” for 6-color screens

3. Select the appropriate option for your e-paper model:

- 13.3 inch GDEP133UT3 Black and White:
- 13.3 inch GDEP133C02 Color:
- 25.3 inch GDEP253C01 Color:

13.3" EC(1600*1200) ▼

13.3" E6(1200*1600) ▼

25.3" EG(3200*1800) ▼

- 25.3 inch GDEP253C02 Color:
- 28 inch GDEP280T01 Black and White:
- 28 inch GDEP280C01 Color:
- 31.2 inch GDEP312TT3 Black and White:
- 31.5 inch GDEP315C01 Color:
- 42 inch GDEP420T01 Black and White:

25.3" E6V3(3200*1800) ▼

28" EC(3840*1080) ▼

28" EG(3840*1080) ▼

31.2" EC(1440*2560) ▼

31.5" E6(2560*1440) ▼

42" EC(2880*2160) ▼

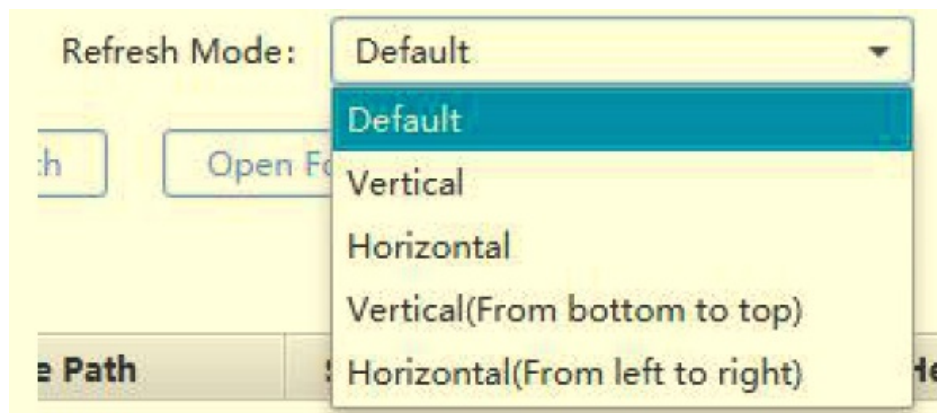
4. **Select Color Mode (“Display Mode”):** Generally, the color mode will automatically switch based on the e-

paper type you select.

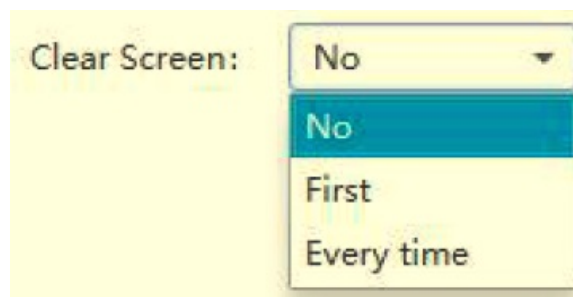


- For color e-papers, choose colors.
- For black and white e-papers, choose monochrome.

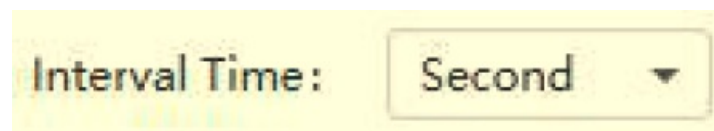
5. Select Refresh Mode (“Refresh Mode”): By default, images are displayed in a horizontal direction.



6. Select Clear Screen Option (“Clear Screen”): The default setting is “No.”



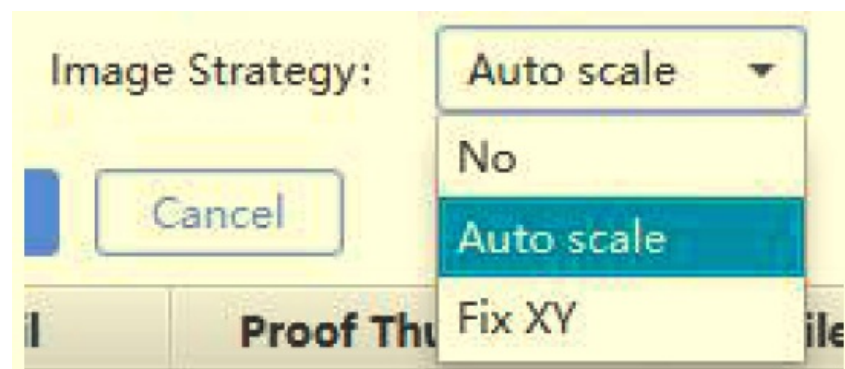
7. Set Screen Refresh Interval (“Interval Time”): The default unit is seconds.



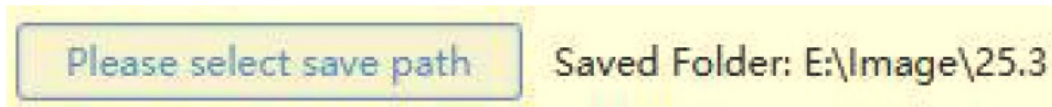
8. Set File Operation Mode (“Operate”): The default setting is “update.”



9. Set Image Scaling Strategy (“Image Strategy”): The default is “Auto scale.”




10. Set Save Path for Images (“Please select save path”): Set this to the root directory where the images are stored



11. Open Folder (“Open Folder”): This option allows you to locate the processed images.

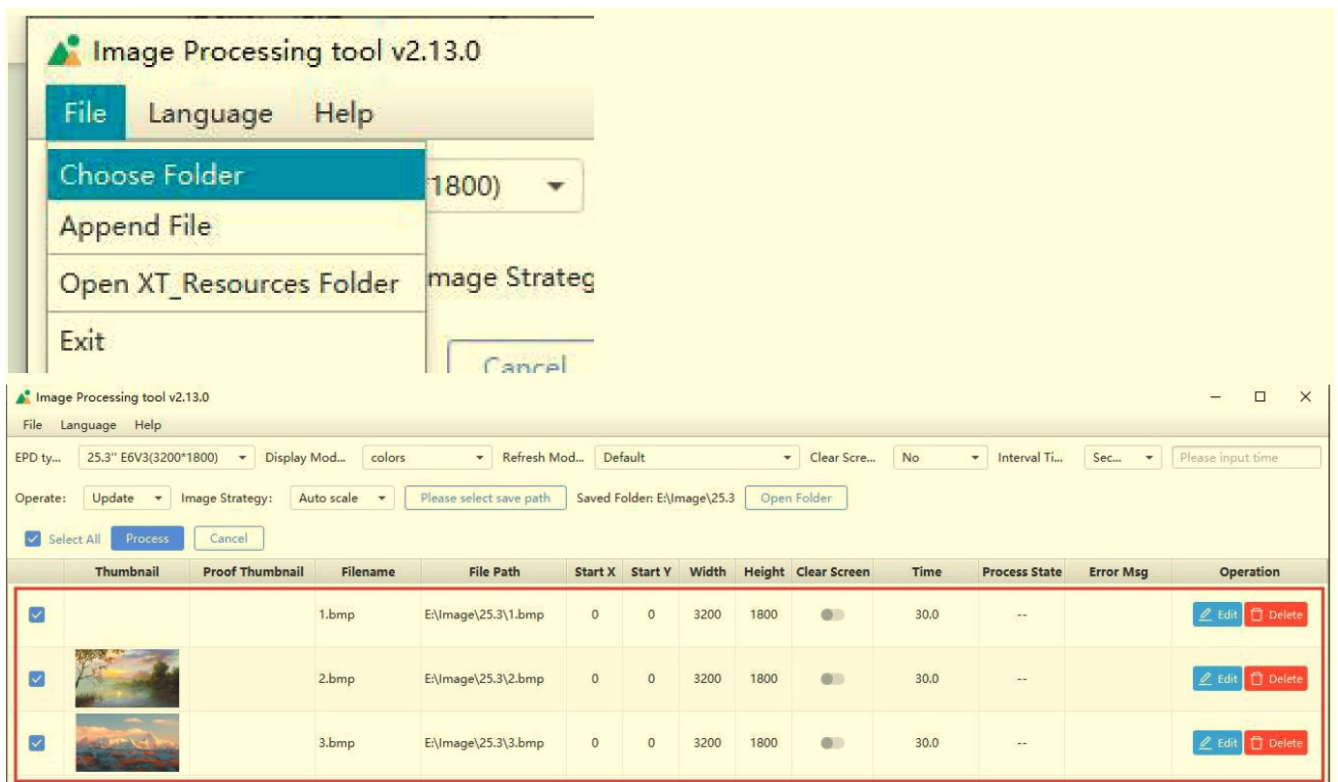


12. Image Processing Button  This button executes the image processing operation.

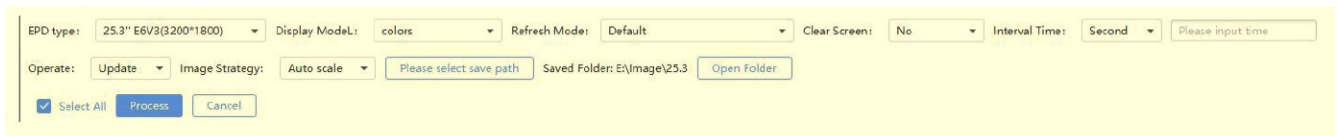
Creating the XT_Resources Package

1. Import Images

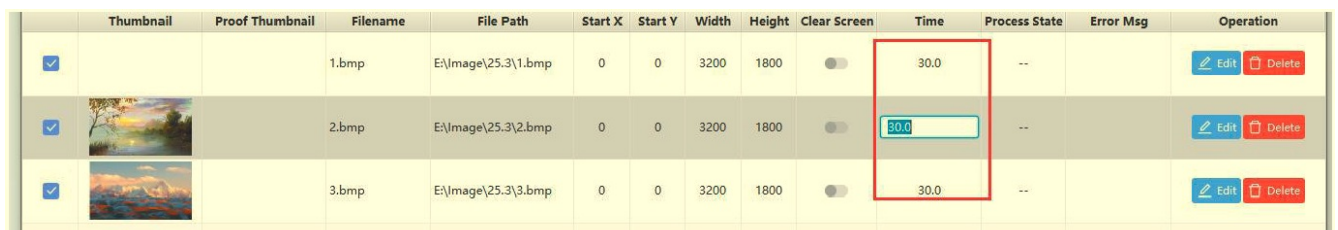
Click File→ Select Folde (the folder containing the images to be processed), as shown in the image below:



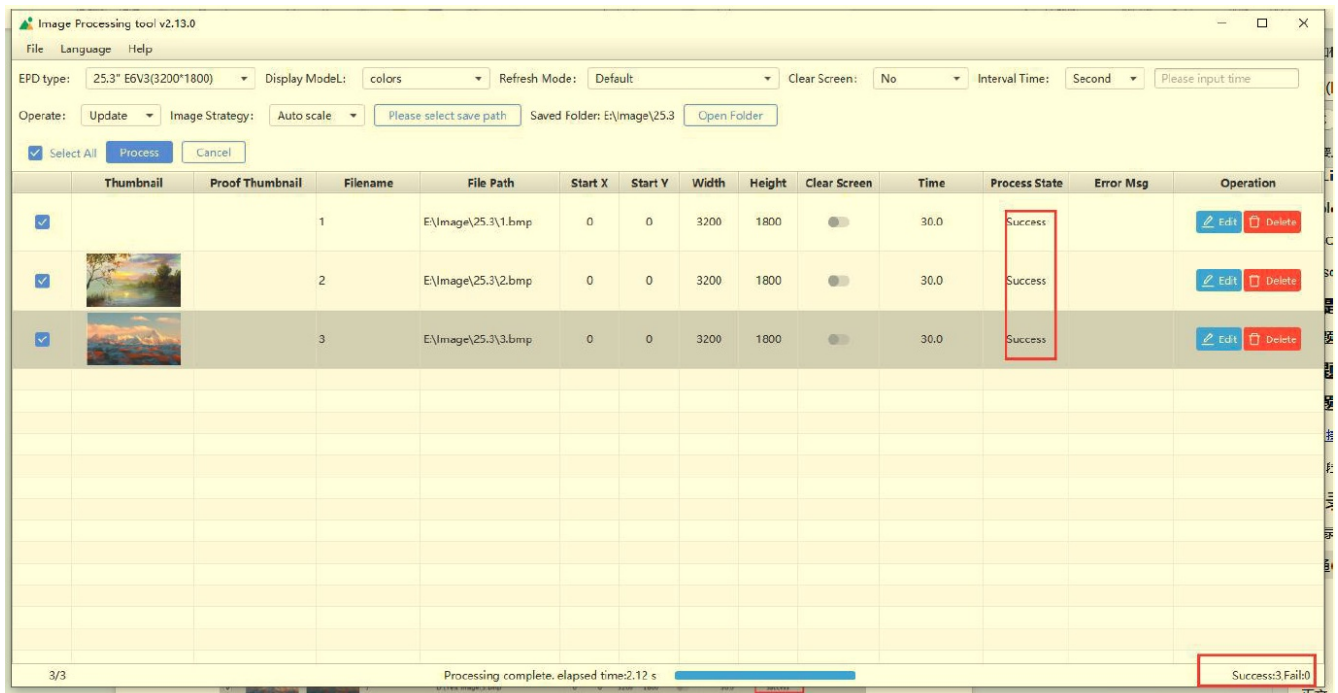
2. Set Screen Parameters Configure the relevant settings. Note that the save path should not contain any spaces.



3. Set Image Refresh Interval The default unit is seconds.



4. Click the Process Button Wait for the image processing to complete. Once processing is finished, an XT_Resources package will be automatically generated. The status bar will display “Success,” indicating that the image conversion is complete. If you see a “Failed” message, check whether the image save path contains any spaces.



5. Click “Open Folder” This will open the folder containing the newly generated XT_Resources file.
6. Copy XT_Resources to USB Drive Copy the XT_Resources folder to the root directory of the USB drive (except for GDEP133C02 and GDEP315C01).

Note: For GDEP133C02 and GDEP315C01, you need to copy all files from within the XT_Resources folder directly to the root directory of the USB drive.

USB Image Loading Process

Function Description: Once the XT_Resources package is prepared, simply insert the USB drive into the USB port of the demo board.

Process Flow

1. Prepare the USB Drive Ensure that the XT_Resources package is correctly placed on the USB drive.
2. Power On the Driver Board Turn on the driver board (if it has a power board, press the POWER button), then insert the USB drive.

Notes

1. If the images do not load: Check if the driver board is properly powered on.
2. If images load but display incorrectly: Verify that the parameters in the resource package are correct. If not, recreate the XT_Resources package.
3. If images do not load within 60 seconds after inserting the USB drive: Try turning off and restarting the device.

- www.good-display.com

Specifications

- Supported Image Formats: BMP, png, jpeg, jpg

- Supported Image Resolutions:
 - **13.3 inch:** 1600×1200
 - **25.3 inch:** 3200×1800
 - **28 inch:** 3840×1080
 - **31.2 inch:** 2560×1440
 - **31.5 inch:** 2560×1440
 - **42 inch:** 2880×2160
- Operating System Compatibility: Windows 7.0 and above

Frequently Asked Questions (FAQ)

Q: Can I use images with spaces in their file names?

A: No, images must not contain spaces in their file names for proper recognition by the software.

Q: What should I do for the GDEP133C02 and GDEP315C01 models regarding the XT_Resources folder?

A: For GDEP133C02 and GDEP315C01 models, copy all files from the XT_Resources folder to the root directory of the USB drive.

Documents / Resources



[GooDisplay USB Image Upload Operations](#) [pdf] Instructions

USB Image Upload Operations, Image Upload Operations, Upload Operations, Operations

References

- [User Manual](#)

[Manuals+](#), [Privacy Policy](#)

This website is an independent publication and is neither affiliated with nor endorsed by any of the trademark owners. The "Bluetooth®" word mark and logos are registered trademarks owned by Bluetooth SIG, Inc. The "Wi-Fi®" word mark and logos are registered trademarks owned by the Wi-Fi Alliance. Any use of these marks on this website does not imply any affiliation with or endorsement.