

Goldtouch[®]
**GTE-08899 Adjustable
Keyboard**



Goldtouch GTE-08899 Adjustable Keyboard User Guide

[Home](#) » [Goldtouch](#) » Goldtouch GTE-08899 Adjustable Keyboard User Guide 

Contents

- 1 [Goldtouch GTE-08899 Adjustable Keyboard](#)
- 2 [Specifications](#)
- 3 [FAQ](#)
- 4 [PRODUCT DESCRIPTION](#)
- 5 [WHY ERGONOMICS ARE IMPORTANT WHEN TYPING](#)
- 6 [SAFETY INSTRUCTIONS](#)
- 7 [SETTING UP YOUR GOLDTOUCH ADJUSTABLE KEYBOARD](#)
- 8 [ADJUSTING YOUR GOLDTOUCH KEYBOARD](#)
- 9 [GENERAL GUIDELINES FOR MAINTAINING GOOD ERGONOMICS](#)
- 10 [MAINTAINING YOUR KEYBOARD](#)
- 11 [HELP AND SERVICE INFORMATION](#)
- 12 [PRODUCT WARRANTIES AND NOTICES](#)
- 13 [Documents / Resources](#)
 - 13.1 [References](#)

Goldtouch[®]

Goldtouch GTE-08899 Adjustable Keyboard



Specifications

- Product: Goldtouch Adjustable Keyboard
- Model: 2024 Goldtouch Elite Keyboard
- Main Phone: 512.259.5688
- Fax: 512.256.6599
- Address: 1320 Arrow Point Drive Bldg. 1, Suite 101, Cedar Park, TX 78613
- Website: www.goldtouch.com

FAQ

Q: Can I use the Goldtouch Adjustable Keyboard with both PC and Mac computers?

A: Yes, you can switch between PC and Mac modes using the Mode Selector switch located under the keyboard.

512.259.5688 Main | 512.256.6599 Fax
1320 Arrow Point Drive Bldg. 1, Suite 101, Cedar Park, TX 78613

CAUTION: IMPROPER KEYBOARD AND MOUSE USE MAY CONTRIBUTE TO MUSCULOSKELETAL INJURIES. READ THE INSTRUCTIONS CONTAINED IN THIS GUIDE BEFORE USING YOUR KEYBOARD

PRODUCT DESCRIPTION

Your Goldtouch Elite Adjustable Keyboard is an outstanding product that can be adjusted to meet the needs of your individual body shape, rather than forcing your body to adapt to the rigid dimensions of standard sized keyboards. It allows you to configure the two alphanumeric halves of the keyboard to assist you in relaxing the muscles and tendons in your hands, wrists, arms, and shoulders. By adopting these modifications, you can reduce undesired and awkward typing positions. This improvement to your posture, coupled with the proper modification of your workplace, can increase your comfort and productivity.

The Goldtouch Elite Adjustable Keyboard has a patented locking ball and lever mechanism, making it possible to adjust your keyboard to a range of 30° horizontally and 30° vertically, and lets you experiment with different keyboard configurations until you find the positions that best suit your needs. Please see our YouTube Videos for more information on how to configure and use your Goldtouch products properly:

<https://www.goldtouch.com/support/videos/>

The majority of users will find that their preferred keyboard position is elevated and splayed, allowing for a more relaxed and natural “repose”. This is the primary advantage of an adjustable keyboard, which allows the user to tweak or adapt the keyboard to their particular needs.

WHY ERGONOMICS ARE IMPORTANT WHEN TYPING

Ergonomics is a term used to describe the study of human movement and work. It is a branch of bio-mechanics, which aims to improve how humans work by ensuring that the body’s movements are safe and efficient. Ergonomists help designers create products that are comfortable for people to use. They also help find ways to prevent injuries caused by using computers or other devices such as mobile phones or tablets.

Ergonomics are important when typing, as:

- They are especially relevant for people who work in an office and spend most of their day typing on a keyboard.
- They can help prevent repetitive strain injuries, carpal tunnel syndrome, wrist pain, and other issues that arise from using the wrong posture.
- They help improve productivity, reduce errors, and increase the speed of typing.

SAFETY INSTRUCTIONS

Please review the included instructions carefully before using this keyboard. Incorrect use of the keyboard and mouse may lead to musculoskeletal injuries. Warning signs that you should not ignore include discomfort, pain, weakness, numbness, tingling, or swelling while using a keyboard or mouse or at any other time. These are not to be taken lightly, as they may be indicative of something serious. Minor musculoskeletal ailments can be easily treated early on before they progress to more serious injuries. Consult a qualified medical expert at the earliest if any of these conditions persist.

SETTING UP YOUR GOLDTOUCH ADJUSTABLE KEYBOARD

Important Information

- DO NOT connect your Goldtouch Adjustable Keyboard to the computer through a USB, or docking station, when installing it for the first time. This may result in a corrupt device driver installation.
- If you plan to use a USB Numeric Keypad along with Goldtouch Adjustable Keyboard, ensure that it is also plugged directly into the computer for installation. Once the device drivers are correctly installed,
- it can be connected through a hub, port, or a switch.
- DO NOT plug the Goldtouch Adjustable Keyboard into any of the USB ports located on the sides of the USB Numeric Keypad if you are using one. Doing so will cause the keyboard and keypad to malfunction. These ports are intended only for low-power devices, such as mice or USB storage drivers.

Selecting Your Mode

Locate the Mode Selector slide switch on the underside of the keyboard. This allows you to select either PC or Mac mode depending on the type of computer you are connecting to. Please note that the Goldtouch Adjustable Keyboard ships in PC mode by default.

Connecting Your Keyboard to Desktop or Laptop via USB or USB-C

- Locate the USB-C to USB 2.0 adapter if required.
- Disconnect and remove your old keyboard.

- Plug the Goldtouch Adjustable Keyboard connector into your computer's USB or USB-C port for initial discovery. Keyboard can then be moved to powered USB hub or docking station after the keyboard is working properly while connected directly to your computer.
- Your Goldtouch Adjustable Keyboard is ready to use.

Connecting Your Keyboard to a Laptop Through Docking Station or USB Hub

- Connect your Goldtouch Adjustable Keyboard directly to an available USB port on the computer for the first time. This is necessary as your docking station may or may not support automatic installation or discovery of device drivers.
- After the device drivers are installed, and your keyboard is validated as working properly, you can go ahead and connect your Goldtouch Adjustable Keyboard to the docking station or powered USB Hub. Your Goldtouch Adjustable Keyboard is ready to use.

Connecting Your Keyboard to Desktop or Laptop with Wireless Dongle

- Determine the number of available USB ports on your computer. Keyboard should receive priority as it is a main input device. (2.4 Ghz Wireless Dongles should, in general, receive priority).
- If the number of available USB ports is insufficient, consider using a powered USB Hub or a docking station/port expander. This will ensure that you can connect multiple devices such as mice, USB memory sticks, or other wired computer peripherals to your computer.
- To ensure the lowest input latency, we recommend plugging your Goldtouch Adjustable Keyboard Wireless Dongle directly into the computer whenever possible.

ADJUSTING YOUR GOLDTOUCH KEYBOARD

The Goldtouch Adjustable Keyboard has been designed to help you prevent or eliminate uncomfortable wrist placement when working. It allows you to achieve your most natural and comfortable wrist positions. You can adjust the two sections of the keyboard and fine tune their placements to suit your individual anatomy and your workstation setup, thereby reducing ulnar deviation and pronation, which are two potentially hazardous and inconvenient postures.

How to Adjust your Goldtouch Keyboard

It is important for a typing setup to be customized to each individual's specific needs. The patented Goldtouch Adjustable Keyboard has an easy-to-use adjustment handle mechanism:

- Locate the adjustment latch.
- To make the necessary adjustments, merely squeeze the handle towards the keyboard. This will release the lock.
- Reposition the keyboard segments to better suit your needs and preferences.
- As soon as you have determined the optimal layout for the keyboard, you need to check that each of the sections is balanced evenly on each of the four feet.
- Once you are satisfied, you can release the handle to its locked position.

The Goldtouch Adjustable Keyboard can move with you as you change posture and tasks throughout the day, avoiding awkward, unpleasant, or pronating wrists and forearm postures.

Splay & Ulnar Deviation Adjustment

When using a normal keyboard, you may have noticed that there typically remains a gap between the width of your keyboard in relation to the width of your shoulders. To make up for that, you turn your wrists inward, increasing the risk of injury to your wrists. (See Figure: 5.2.1 Ulnar Deviation)



Figure 5.2.1: Ulnar Deviation

Your Goldtouch Adjustable Keyboard prevents this by splitting in the middle on the horizontal plane and relieving your wrists from their awkward position and uncomfortable posture. It does this by splaying the keyboard to a wider angle. The aim here is to allow your wrists to be as straight as they can be (See Figure: 5.2.2 No Ulnar Deviation), which in turn decreases ulnar deviation, increases your comfort level, and prevents any wrist-related injuries.

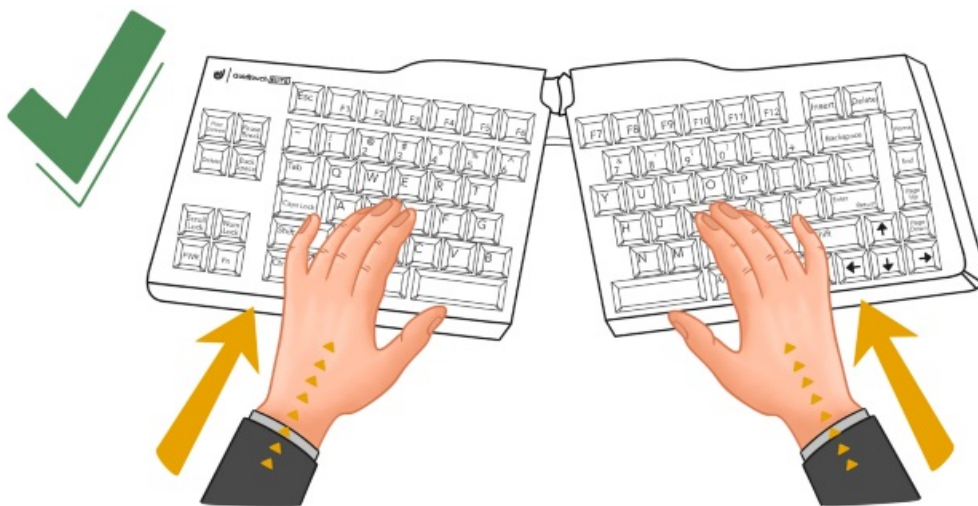


Figure 5.2.2: No Ulnar Deviation

To reduce ulnar deviation:

- Squeeze the adjustment lever towards the keyboard.
- Pull the bottom edges of the keyboard halves in the outward direction to form the “^” shape shown above. Your setup should resemble Figure 5.2.2.
- Try out your new setup. Make adjustments if necessary.

Important: After making this adjustment, ensure that your elbows are at a 90° and your forearms are horizontal. If they are not, alter your seat or desk height.

Lateral Inclination & Pronation Adjustment

Pronation is a hand movement that involves forcing your hands down to the keyboard. This is the counterclockwise rotation of the right hand and the clockwise rotation of the left hand. A significant amount of muscular effort is typically required to place your hands flat on the keys of the keyboard. This exertion has the potential to increase your discomfort and make you feel tired in a short amount of time.

For pronation problems of the foot, for instance, arch supports (orthotics) and heel stabilizers can be used. For pronation issues of the wrist arising from the use of keyboards, the Goldtouch Adjustable Keyboard is the answer.

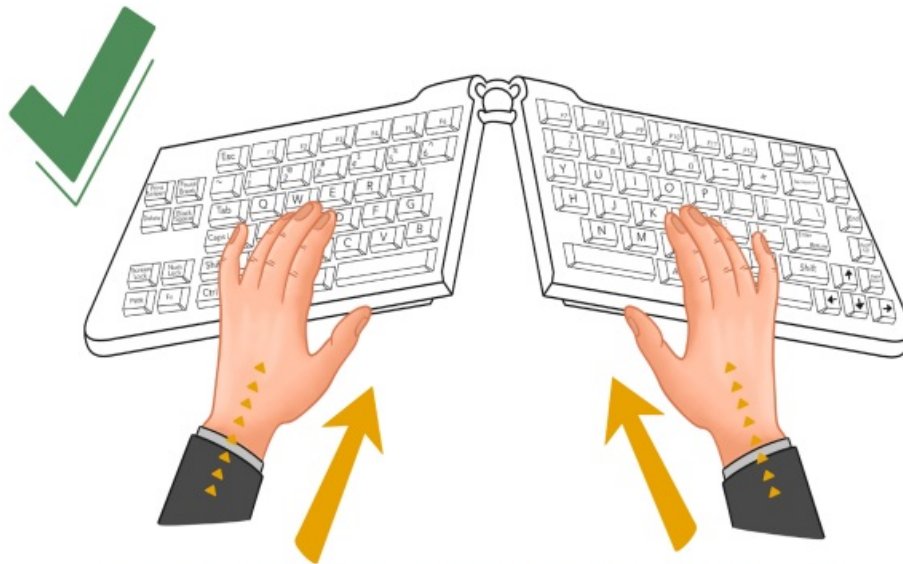


Figure 5.3: Correct Wrist Position using Ergonomic Keyboard

The Goldtouch Adjustable Keyboard is designed such that its two keyboard segments can be raised at the center to closely match the natural alignment of the forearm and wrist.

To reduce pronation while using the Goldtouch Adjustable Keyboard

- Lift the central portion (tent) to a higher angle.
- Experiment and fine tune the adjustment until you feel a sense of relaxation in the wrists, forearms, shoulders, and neck.
- Please watch our videos to learn how to properly adjust your Goldtouch Keyboard to set your keyboard at just the right height and splay positions.

Wrist Extension and Adapting your Workplace

Your hands have the tendency to angle backwards at the wrist when using standard keyboards. This is called wrist extension and it puts undue strain on your wrist.

- Ideally, your wrists should always be straight, and your hands and forearms aligned when typing. Ensure that your elbows are at a 90° angle when you place your fingers on the keys.
- If they are not, adjust your seat and desk heights until your elbows are at the desired angle.

Number Keypad and Function Lock

Your Goldtouch Adjustable Keyboard comes with a “NumLock” key to enable the use of the embedded numeric keypad. When the NumLock is enabled, the letter-generating keys (U,I,O, etc.) will generate numeric characters (456), and the arithmetic functions typically found on the numeric keypad will be located in the lower-right corner of

the keys.

This NumLock feature makes it possible for the keyboard to have a smaller footprint, which in turn makes it possible for you to move the mouse into the “comfort zone” in front of you. You will find more information on the comfort zone in the next section.

GENERAL GUIDELINES FOR MAINTAINING GOOD ERGONOMICS

One of the things that can help create maximum comfort is using a keyboard that can be adjusted to suit your specific requirements. Your Goldtouch Adjustable Keyboard is designed to do just that.

The keyboard’s custom placement options ensure that awkward and uncomfortable postures are reduced or completely removed, thereby eliminating strains and stresses caused by typing for extended periods of time. With the Goldtouch Adjustable Keyboard, you get the ability to adjust your keyboard angle and position any time you want and reduce the cumulative strain that is exerted on your muscles.

Expert ergonomists recommend arranging your workspace such that your most frequently used tools are in the distance between your elbow and your hand. They call this the “comfort zone.”

Observing good ergonomics helps you maintain a relaxed, neutral posture when using your keyboard. When you consistently carry out an activity in the same manner, you put yourself at a greater risk of overexertion and damage. Below are the best ergonomic practices as recommended by experts when working on a computer:

Arranging Your Workspace

Increasing the level of comfort in your workstation can have a positive impact on both productivity and efficiency.

- Make sure that your workstation is set up in a way that allows you to achieve strain-free, neutral wrist postures. This means that your wrists should be straight, limber, and not twisted in any way.
- Place the computer keyboard and mouse in front of you.
- When you are typing or using a mouse, make sure your elbows are at a 90-degree angle, and your forearms are horizontal.
- At your workstation, adjust the height of your chair so that your knees are bent at a 90-degree angle, and your feet are placed flat on the floor.
- Allow yourself plenty of space to move around while you’re working on your primary tasks.
- Put the items that you use the most within easy reach so that you won’t have to stretch to reach them. This includes things like your keyboard, mouse, phone, pens, paper, and so on.
- Put items that aren’t used as regularly at a location that’s a little further away but still within reach. Place the things that you use the least in the farthest corners of your workspace, beyond your reach. Make sure that the information you need is easily accessible by using a document holder to organize it all. Adjust it so that it is at the same height and distance as your monitor so that the visual field is consistent throughout.

The Goldtouch Adjustable Keyboard’s small footprint ensures that you can place the mouse close to the keyboard and within your arm’s reach. See Figure: 6.1.



Figure 6.1

Adjusting your Seat Height and Work Surface

Your posture affects your comfort and productivity at work. A neutral, natural, relaxed posture will lead to increased comfort (See: Figure 6.2). The type of chair, height of your desk, and the distance of your computer monitor are all vital to find a good posture. Using chairs with adjustable heights and armrests can help you modify your workstation to your individual needs.

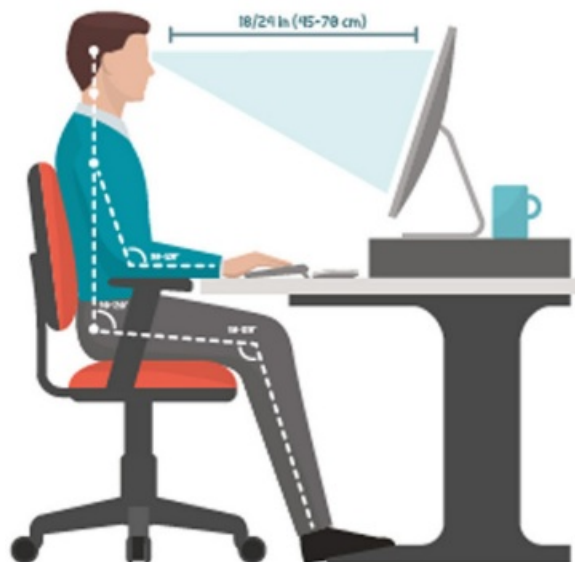


Figure 6.2

- It is essential that you steer clear of hand, wrist, and forearm positions that feel unpleasant to you. Maintain a relaxed and supple state in your arms, neck, and shoulders by keeping your elbows at your sides.
- Maintain a position in which your thighs are perpendicular to the ground, and make sure that the edge of the chair is not pressing against the back of your knees.
- Put your feet down on the floor in a relaxed position. Employ the use of a foot support if necessary. Make sure you're sitting on a chair that gives your thighs and lower back plenty of support.
- Adjusting the height of your chair's back so that the seat back touches the curved portion of your back may increase comfort.
- Choose a chair that allows you to change the height of the armrests so that you are not forced to hunch over or slouch in order to use them.

Important: We recommend keeping your elbows at 90° and your forearms horizontal. When you change the height of your Goldtouch Keyboard, you may also need to also readjust the height of your chair, and vice versa.

Maintaining A Good Posture

After you've set up your workstation, remember to keep your back straight and take frequent breaks. The same holds true outside the office as well as inside it.

- Make sure to keep a comfortable but upright posture with your body while you are working.
- When you need to reach a key on the keyboard, move your hands and arms together rather than stretching your fingers out.
- If you have a wrist rest, you should only use it in between sessions of typing and not while you are actually typing.
- Stay away from postures that leave you frozen or immobile. Changing your posture throughout the course of the day will allow your body to work a wider range of muscles than it would otherwise. Maintain a comfortable level of warmth in your hands and arms. Both the circulation of blood and the muscles in your body will benefit from this action.
- You should never put any part of your hands, wrists, or arms on any surface that is either sharp or hard. While you're typing, you shouldn't put your wrists on any surface.
- When you are typing or using a mouse, make sure to use a light touch.
- Don't shrug or hunch your shoulders while working.

Taking Frequent Breaks

People have varying levels of stamina and strength and are prone to exhaustion at different times. Think about how much time you can spend at the keyboard without needing a break, and schedule them in. It's essential to respect the body's limits and not push it beyond what it can handle.

- It's important to plan out your tasks to avoid unnecessary bouts of tension and exhaustion.
- Keep your hands, wrists, and arms from doing the same repetitive actions by switching between tasks. Try to take a short break every 20 minutes or when you feel fatigued.
- Both efficiency and comfort could benefit from taking frequent, shorter breaks in addition to longer ones.

Vision Care

It is essential to have adequate lighting in order to prevent strain on the eyes. Using your computer could be made more difficult by reflective glare. If this is the case, you should clear the area around your monitor and workstation of any potential sources of reflective glare that could be distracting (such as shiny posters, paper, or glass, for example). When working long hours at a computer, indirect lighting is likely to be most beneficial. Some ergonomists recommend minimizing the amount of light that enters the room in comparison to when reading or working with papers.

This means that if you are using a computer and reading from paper at the same time, you may want to use indirect lighting to make sure that your computer screen is clear and easy to read and that the paper you are reading is also well lit. You can do this by using indirect light while you're reading on screen and putting task lighting over what you're reading on a printed document.

- Make the necessary adjustments to the lighting and the working environment so that there is no reflecting glare on the screen.
- Get rid of anything that could cause a reflecting glare.
- Adjust the tilt of the monitor so that reflection is minimized.
- Adjust your workstation so that the display is not directly facing a window either behind it or in front of it. Bright ambient light, particularly directly in front of you, will cause your eyes to adjust, which will make it more difficult for you to read what's on your display and will induce eyestrain.

- Adjust the brightness and contrast settings on your computer monitor, as well as the surrounding environment, as the ambient light changes during the day. This includes closing blinds, adjusting the lighting at your workspace, and adjusting the brightness and contrast settings on your monitor.
- Adjust the monitor so that it is 18 to 30 inches away from your eyes (46 cm to 76 cm).
- The top of the screen should be at, or slightly below, eye level.
- Use a document holder if you are working with physical copies.
- Ensure the screen is clean.
- If you wear glasses, you might need to get them adjusted when working on a computer because the distances involved are different from those used for reading.
- If you wear multifocal or bifocal glasses, the monitor should be positioned so that it is even lower to prevent you from having to tilt your head back to see it.
- When working on a computer, it may be helpful to prevent eye strain by blinking more frequently than usual and making it a habit to relax your eyes by staring into the distance regularly.
- Consult your optometrist regularly.
- It becomes evident from this section of the User Guide that the level of comfort experienced in the workplace is influenced by a range of circumstances.
- If you believe that your posture is not conducive to effective and comfortable work practices, and you are experiencing any discomfort, you should visit a trained health specialist for guidance, treatment, and ergonomic training.
- Goldtouch seeks to deliver the best level of comfort possible for the computer peripheral factor, and to do so, it addresses the design of both the keyboard and the mouse. We have presented you with these suggestions to assist you in maximizing your comfort when working. It is ultimately up to you to adapt and adjust the other elements that were described to encourage your level of comfort. Only you can genuinely evaluate what is best for you, and it is your responsibility to do so.

Important: Despite the ergonomic design of the Goldtouch Keyboard and Mouse and the directions in this guide, we cannot guarantee that you will not experience any discomfort as a result of using your computer-based workstation.

MAINTAINING YOUR KEYBOARD

Wipe the top of your keyboard with a soft cloth dampened with a moderate cleaning solution, preferably water and mild soap. This will help to keep the surface of your keyboard clean. Avoid exposing the keyboard to temperatures that are too high or too low. The optimal operating range for your keyboard is from – 50 °C to 50 °C (23 °F to 122 °F). Avoid the usual hazards associated with operating electronic devices, such as submerging it in water, dropping it, or pressing the keys or operating the latch handle too firmly. DO NOT attempt to adjust the keyboard without squeezing the latch handle to release the mechanism. DO NOT PLACE ANY LUBRICATION or CLEANING FLUID IN THE BALL JOINT. Doing so will void your warranty.

HELP AND SERVICE INFORMATION

You may need only simple instructions to resolve a problem with your purchase from Goldtouch, Key Ovation. You can email our Support team at support@goldtouch.com. Hours of operation are from 9am-5pm CST, Monday through Friday (times subject to change).

Our website contains the answers to many Frequently Asked Questions (FAQs) and allows questions to be sent to Key Ovation through the general inquiry form. Please visit the Support section of our site.

PRODUCT WARRANTIES AND NOTICES

LIMITED WARRANTY – KEYBOARD REGISTRATION CARD

1. **Warranty.** Key Ovation LLC (“Goldtouch”) warrants to you, the original purchaser, that the keyboard accompanying this Warranty (the “Keyboard”) will be free from defects in material and workmanship for twelve months from the date of purchase and, during such period, will operate as described in the User’s Guide provided by Key Ovation (the “User’s Guide”). The original purchaser is entitled to this warranty only if the Keyboard is registered at the time of sale or the purchaser can demonstrate to Key Ovation’s satisfaction that the Keyboard was purchased during the warranty period. If you notify Key Ovation during the warranty period of a defect in the Keyboard which is covered by this warranty, Key Ovation’s sole liability for any breach of these limited warranties shall be in Key Ovation’s sole discretion limited to: (a) replacing the Keyboard or supplying an equivalent keyboard; (b) repairing the Keyboard; (c) reimbursing the original purchaser for the cost of replacing the Keyboard; (d) payment to the original purchaser for the cost of having the Keyboard repaired; or (e) refunding the price paid by the original purchaser for the Keyboard. Key Ovation’s liability under 1(a)-(e) above will only arise where such defects are a result of faulty materials or workmanship on the part of Key Ovation and not where such defects are a result of improper use of the Keyboard or use of the Keyboard outside the guidelines in the User’s Guide. This limited warranty gives you certain legal rights. You may also have other rights that vary from state/jurisdiction to state/jurisdiction. For consumers in the United Kingdom, this exclusion only applies to the extent permitted by law. Your statutory rights may not be affected. The limited warranties set forth in this Keyboard Warranty apply solely to you, the original purchaser, and not to any subsequent third-party purchaser or transferee.
2. **Repairs.** If Key Ovation elects to repair the Keyboard, you must ship the Keyboard to Key Ovation at your cost.
3. **Limitation of warranty.** This is a limited warranty, and it is the only warranty made by Key Ovation. Key Ovation makes no other express or implied warranties and expressly disclaims, to the maximum extent permitted by applicable law, all warranties of merchantability and of fitness for a particular purpose, title, and non-infringement of third parties’ rights. No Key Ovation dealer, agent, or employee is authorized to make any modifications, extensions, or additions to this warranty or to the terms of this agreement.
4. **Limitation of liability.** To the maximum extent permitted by law under no circumstances and under no legal theory, including tort, negligence, contract or otherwise, shall Key Ovation or its suppliers or resellers be liable to you or any other person for any indirect, special, incidental, or consequential damages of any kind, including, without limitation: damages for loss of goodwill, work stoppage, computer failure or malfunction, or any or all other commercial damage or losses, or for any damages in excess of Key Ovation’s list price for the product purchased by you, even if Key Ovation is or was informed of the possibility of such damages, or for any claim by any other party. This limitation of liability shall not apply to liability for death or personal injury to the extent applicable law prohibits such limitation. In any event, Key Ovation’s entire liability under any provision of this warranty shall be limited to the amount actually paid by you, the original purchaser, for the hardware device. Furthermore, some states and jurisdictions do not allow the limitation of liability for incidental or consequential damages under such specific circumstances. Therefore, the above limitation may not apply to you.
5. **FCC Compliance and Advisory Statement.** The Keyboard complies with Part 15 of the Rules and Regulations of the Federal Communications Commission (“FCC Rules”). Operation is subject to the following two conditions: (a) the Keyboard may not cause harmful interference, and (b) the Keyboard must accept any interference received, including interference that may cause undesired operation. The Keyboard has been tested and found to comply with the limits for a Class B digital device, pursuant to Part 15 of the FCC Rules. These limits are designed to provide reasonable protection against harmful interference in a residential installation.

The Keyboard generates, uses, and can radiate radio frequency energy and, if not installed or used in accordance with the instructions, may cause harmful interference to radio communications. There is no guarantee that interference will not occur during installation. If the Keyboard causes harmful interference to radio or television reception, which can be determined by turning the Keyboard off and on, the user is encouraged to try to correct the interference by one or more of the following measures:

- Reorient or relocate the receiving antenna.
- Increase the separation between the Keyboard and the receiver.
- Connect the Keyboard into an outlet on a circuit different from that to which the receiver is connected.
- Consult the dealer or an experienced radio/TV technician for help.

6. Canadian Interference – Causing Equipment Regulations. This Class B digital apparatus meets all requirements of the Canadian Interference Causing Equipment Resolutions; provided, however, changes or modifications not expressly approved by the manufacturer responsible for compliance could void the user's authority to operate the Keyboard.
7. Miscellaneous. This Agreement represents the complete and exclusive statement of the agreements between Key Ovation and the customer concerning the Keyboard. If any provisions of this Agreement are held to be unenforceable for any reason, such provisions shall be reformed only to the extent necessary to make it enforceable, and such decision shall not affect the remaining provisions hereof. Heading shall not be considered in interpreting this Agreement. This Agreement shall be governed by and construed under the internal laws of the State of Texas, except as governed by U.S. Federal laws. This Agreement will not be governed by the United Nations Convention of Contracts for the International Sale of Goods, the application of which is hereby expressly excluded. THE ACCEPTANCE OF ANY PURCHASE ORDER PLACED BY YOU IS EXPRESSLY MADE CONDITIONAL ON YOUR ASSENT TO THE TERMS SET FORTH HEREIN, AND NOT THOSE IN YOUR PURCHASE ORDER.
8. Export. You may not download or otherwise export or re-export any software created by Key Ovation (the "Software") or any underlying information or technology except in full compliance with all applicable laws and regulations in the country in which you acquired the Software. None of the Software or underlying information may be downloaded or otherwise exported or re-exported into Cuba, Iraq, Libya, Yugoslavia, North Korea, Iran, Syria or any other country to which the U.S. has embargoed goods.
9. Termination. Either party may terminate this Agreement immediately in the event of default by the other party. Upon the termination of this Agreement, you shall immediately discontinue the use of the Keyboard and Software and shall within 10 days return it to Key Ovation along with all related documentation. If you choose to return the Keyboard or any other Key Ovation product supplied with the Software, the Software license granted by this Agreement automatically terminates.
10. High Risk Activities. The parties agree that the Keyboard and Software are not fault-tolerant and are not designed, manufactured or intended for use or resale as online control equipment in hazardous environments requiring fail-safe performance, such as in the operation of nuclear facilities, aircraft navigation or communications systems, air traffic control, direct life support, machines, or weapons systems, in which the failure of the product could lead directly to death, personal injury, or severe physical or environmental damage ("High Risk Activities"). Accordingly, Key Ovation and its suppliers specifically disclaim any express or implied warranty of fitness or High Risk Activities.
11. Warranty Claims. To make a warranty claim, please contact the reseller where you purchased the products. If you purchased from Key Ovation's website, you may contact us at:
Key Ovation LLC

1320 Arrow Point Drive

Bldg I, Suite 101


Cedar Park, TX 78613

Please visit www.Goldtouch.com to obtain an RMA form.



Important:

Be sure to retain your proof of purchase and, for non-European purchasers, we recommend registering your Goldtouch Keyboard as it may be required for warranty service. Information in this document is subject to change without notice. No part of this document may be reproduced or transmitted in any form or by any means, electronically or mechanically, for the purpose, without the express written permission of Key Ovation, LLC. U.S. Patent Nos. 5,424,728 and 5,543,790, Australian Patent No. 645,590, UK Patent No. 538,329. Other patents issued and pending ® means trademark registered in US and Australian Trademarks Office. Trademark applications are pending in other countries. All trademarks are the property of their respective owners. © Key Ovation LLC; All Rights Reserved.

Documents / Resources

	<p>Goldtouch GTE-08899 Adjustable Keyboard [pdf] User Guide GTE-08899 Adjustable Keyboard, GTE-08899, Adjustable Keyboard, Keyboard</p>
---	---

References

-  [Elevate Comfort with Ergonomic PC Peripherals | Goldtouch](#)
-  [Support Videos - Goldtouch](#)
- [User Manual](#)

[Manuals+](#), [Privacy Policy](#)

This website is an independent publication and is neither affiliated with nor endorsed by any of the trademark owners. The "Bluetooth®" word mark and logos are registered trademarks owned by Bluetooth SIG, Inc. The "Wi-Fi®" word mark and logos are registered trademarks owned by the Wi-Fi Alliance. Any use of these marks on this website does not imply any affiliation with or endorsement.