



## GOLDEN VISION L3 Smart Camera App User Guide

[Home](#) » [Golden Vision](#) » GOLDEN VISION L3 Smart Camera App User Guide 

# Golden Vision



Smart Life

## Contents

- 1 L3 Smart Camera App
- 2 FCC Statement
- 3 Basic Parameters
- 4 Component Description:
- 5 Install APP
- 6 Add The Device-Scan QR code mode
- 7 Add device-WIFI fast connection mode
- 8 Matters Need Attention
- 9 Documents / Resources
- 9.1 References

## L3 Smart Camera App

Thank you for using smart camera

### FCC SDoC

**NOTE:** This equipment has been tested and found to comply with the limits for a Class B digital device, pursuant to part 15 of the FCC Rules. These limits are designed to provide reasonable protection against harmful interference in a residential installation. This equipment generates, uses and can radiate radio frequency energy and, if not installed and used in accordance with the instructions, may cause harmful interference to radio communications. However, there is no guarantee that interference will not occur in a particular installation. If this equipment does cause harmful interference to radio or television reception, which can be determined by turning the equipment off and on, the user is encouraged to try to correct the interference by one or more of the following measures:

- Reorient or relocate the receiving antenna.
- Increase the separation between the equipment and receiver.
- Connect the equipment into an outlet on a circuit different from that to which the receiver is connected.
- Consult the dealer or an experienced radio/TV technician for help.

### RF Exposure Information:

This equipment complies with FCC radiation exposure limits set forth for an uncontrolled environment. This equipment should be installed and operated with minimum distance 20cm between the radiator & your body.

## FCC Statement

This equipment has been tested and found to comply with the limits for a Class B digital device, pursuant to part 15 of the FCC Rules. These limits are designed to provide reasonable protection against harmful interference in a residential installation. This equipment generates, uses and can radiate radio frequency energy and, if not installed and used in accordance with the instructions, may cause harmful interference to radio communications. However, there is no guarantee that interference will not occur in a particular installation. If this equipment does cause harmful interference to radio or television reception, which can be determined by turning the equipment off and on, the user is encouraged to try to correct the interference by one or more of the following measures:

- Reorient or relocate the receiving antenna.
- Increase the separation between the equipment and receiver.
- Connect the equipment into an outlet on a circuit different from that to which the receiver is connected.
- Consult the dealer or an experienced radio/TV technician for help.

**Caution:** Any changes or modifications to this device not explicitly approved by manufacturer could void your authority to operate this equipment.

This device complies with part 15 of the FCC Rules. Operation is subject to the following two conditions: (1) This device may not cause harmful interference, and (2) this device must accept any interference received, including interference that may cause undesired operation.

## Basic Parameters

Product Name: Smart Camera

Pixel: 2.0MP/3.0MP/4.0MP/5.0MP/8.0MP  
Video Compression: H.264 H.265 High Profile  
Image Enhancement: Digital Wide Dynamic 3D Noise Reduction  
Local Storage: MicroTF card  
Wireless Encryption: WEP/WPA/WPA2 Encryption  
Power Input: 5V 1A(Min)  
Total Power Consumption: 5W (Max)  
WirelessStandard: 2.4G 802.11 b/g/n  
Support Platform: Android/iOS

## Component Description:

Reset Button: Long press "reset" hole 5sec, reset success.

It is recommended to insert 8-128GB high-speed Micro TF card, otherwise

it will not be able to store, view historical video and support Important functions such as firmware upgrading.

Packing list: Smart Camera \* 1, Manual « 1, USB Power Cord \* 1, Power Adapter « 1, Screw Accessories Package x 1

## Install APP

Download APP: scan the QR code below to download and install.

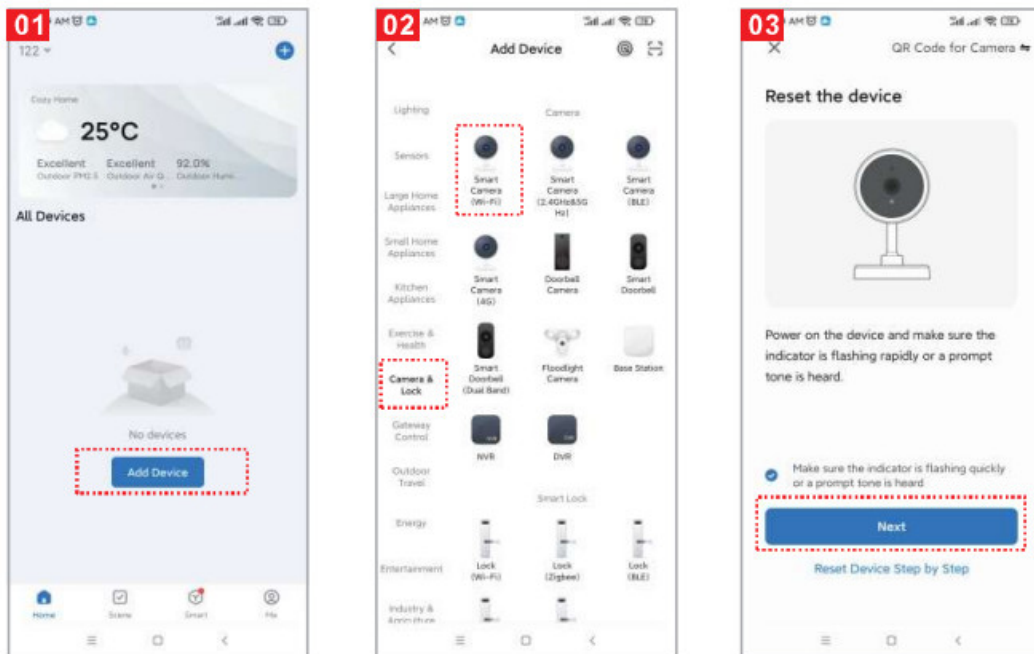
Register and login: open the "Smart Life" APP to register and login according to the prompts.



<http://smartapp.tuya.com/smartlife?from=singlemessage&isappinstalled=0>

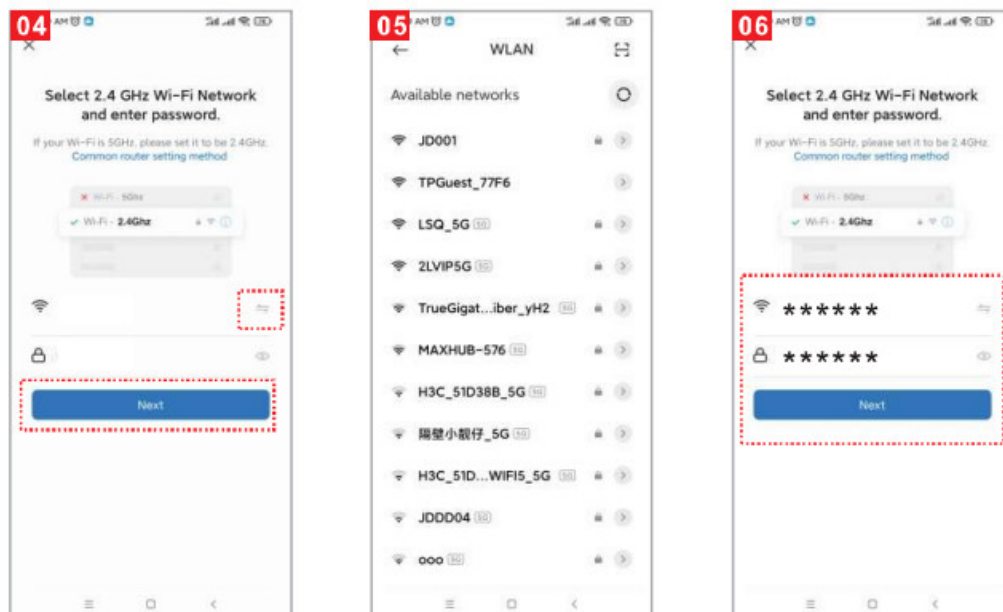
## Add The Device-Scan QR code mode

- Make sure Wi-Fi is available and connected to the Internet.
- Connect the camera to the power, then system startup completed.
- Open "Smart Life" APP, press the '+' in the upper right corner of the main screen (Figure 01); choose "Security & Video Surveillance". click "Smart Camera" (Figure 02) to add camera; and then click Next step" (Figure 03);

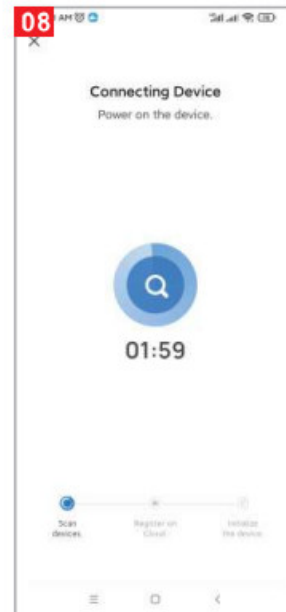
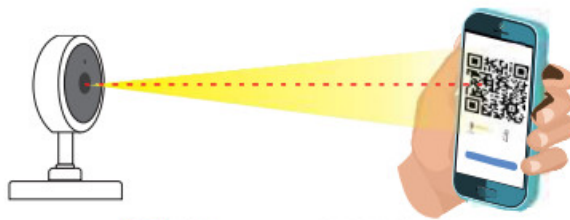


**Please note that only 2.4 GH Wi-Fi network is supported;**

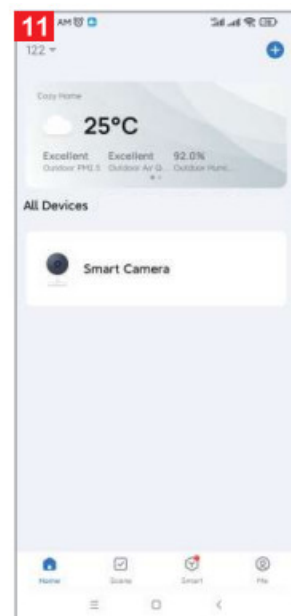
- If the mobile phone is not connected to wi-fi, please click “Connect to Wi-fi” (Figure 04).
- It will jump to the WLAN interface and connects Wi-Fi (Figure 05).
- If the phone is connected to Wi-Fi (Figure 06);



- AQR code will prompt on your screen and you need to scan it with the Smart Camera. (the camera is about 20-30 cm away from the mobile phone lens).
- Then click “hear the prompt sound” (Figure. 07. “connecting” (Figure. 08);

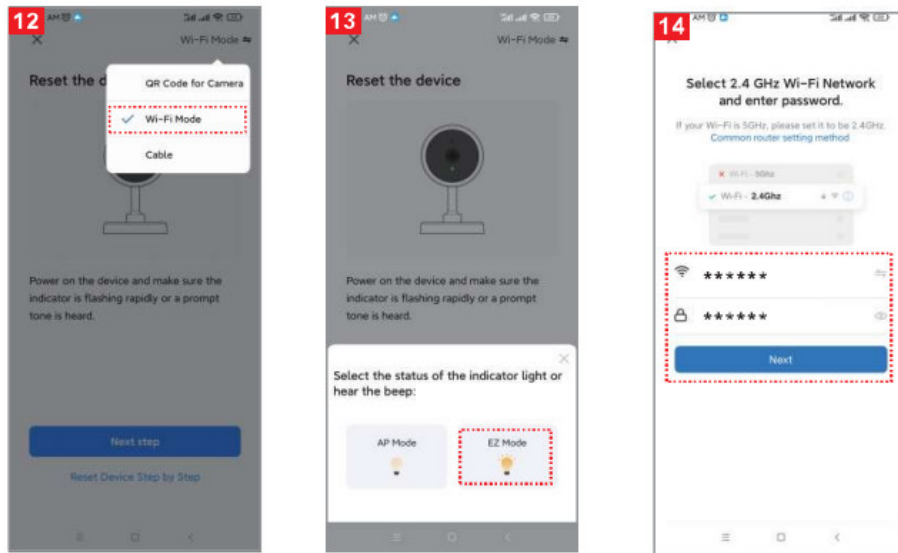


- Connection completed (Figure 09), and click "Done":
- Then jump to preview interface (Figure 10)
- After closing the device preview interface, the interface returns to the APP home page. At this time, the connected device will appear on the APP home page (Figure 11). Then you can click directly to the device interface to see the monitoring situation without re-adding afterwards.

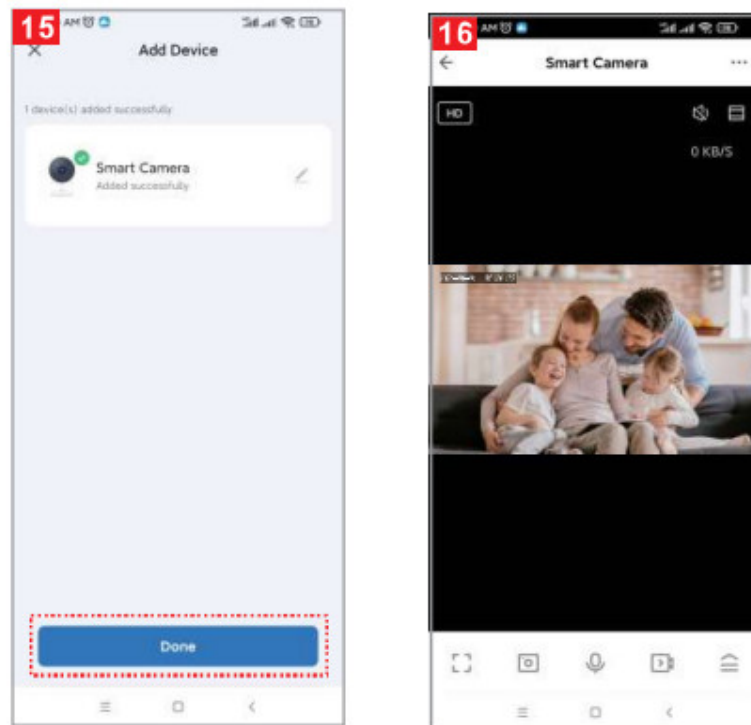


## Add device-WIFI fast connection mode

- Select "EZ Mode" (Figure 12)
- Click Next (Figure 13)
- Enter the account and password that can connect to WIFI (Figure 14)



- Click to complete the connection (Figure 15)
- Video screen (Picture 16)



## Matters Need Attention

Try to keep away from the metal space;

Avoid the furniture , microwave oven blocked;

Avoid the space where the audio, video and data lines are wound, and keep the space away from them as large as possible:

Ensure that as close as possible to the coverage of wireless Wi-Fi signals. Switching network environment;

In the new network environment, please press the reset hole about 5 seconds, then connect to the network,

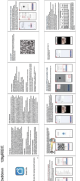
The name and content of the harmful substances in the product

Part Name	Harmful Substance					
	Pb	Hg	Cd	Cr(VI)	PBB	PBDE
shell	0	0	0	0	0	0
Board	X	0	0	0	0	0
charger	0	0	0	0	0	0
annex	0	0	0	0	0	0
This fon 1 is based on the provisions of SIT 11364.						

This product conforms to RoHS environmental protection requirements. At present, there is no mature technology in the world to replace or reduce the lead content in the electronic ceramics. porcelain, optical glass, steel and copper alloy.

# Golden Vision

## Documents / Resources

	<p><a href="#">GOLDEN VISION L3 Smart Camera App</a> [pdf] User Guide 2APD7-L3, 2APD7L3, L3 Smart Camera App, L3, Smart Camera App, Camera App, App</p>
--	---

## References

- [User Manual](#)

[Manuals+](#), [Privacy Policy](#)

This website is an independent publication and is neither affiliated with nor endorsed by any of the trademark owners. The "Bluetooth®" word mark and logos are registered trademarks owned by Bluetooth SIG, Inc. The "Wi-Fi®" word mark and logos are registered trademarks owned by the Wi-Fi Alliance. Any use of these marks on this website does not imply any affiliation with or endorsement.