



GOFLIGHT GF-SECM Single Engine Control Module Owner's Manual

[Home](#) » [GOFLIGHT](#) » GOFLIGHT GF-SECM Single Engine Control Module Owner's Manual 



GF-SECM Single Engine Control Module Cockpit Control System GF-SECM MANUAL

Contents

- [1 GF-SECM Single Engine Control Module](#)
- [2 Connecting the USB Cable](#)
- [3 Software Installation](#)
- [4 GF-SECM Warranty](#)
- [5 Documents / Resources](#)
 - [5.1 References](#)
- [6 Related Posts](#)

GF-SECM Single Engine Control Module

Congratulations on your purchase of a GoFlight GF-SECM (Single Engine Control Module), part of the extensive family of GoFlight GF Cockpit Control System modules.

The GF-SECM is designed to operate with a wide variety of simulated aircraft and is sure to make your flight simulation experience more realistic and enjoyable.



The steps below will assist in the installation, configuration and operation of the GF-SECM. Following these instructions will help to get you up in the “virtual skies” as quickly as possible.

Connecting the USB Cable

To connect the SECM to your computer, use the 2-meter USB cable provided in the package, following these steps:

1. Plug the USB cable “B” connector end (square) into the connector on the back of the GFSECM enclosure.
2. Plug the USB cable “A” connector end (rectangular) to a USB port on your computer or hub.

The first time the SECM is connected to the USB port on a computer running Microsoft Windows, a message “New Hardware Found” or “Your New Device is Now Ready” should appear briefly on your screen. This indicates that Windows has detected the SECM, and has loaded all required drivers.

From this point on, if you disconnect the SECM and then re-connect it, the drivers will automatically load and no message will appear on the screen. This also occurs each time you re-start your computer while the SECM is connected. The automatic loading of drivers, with no notification message, is a normal operating feature of the Windows Plug and Play system.

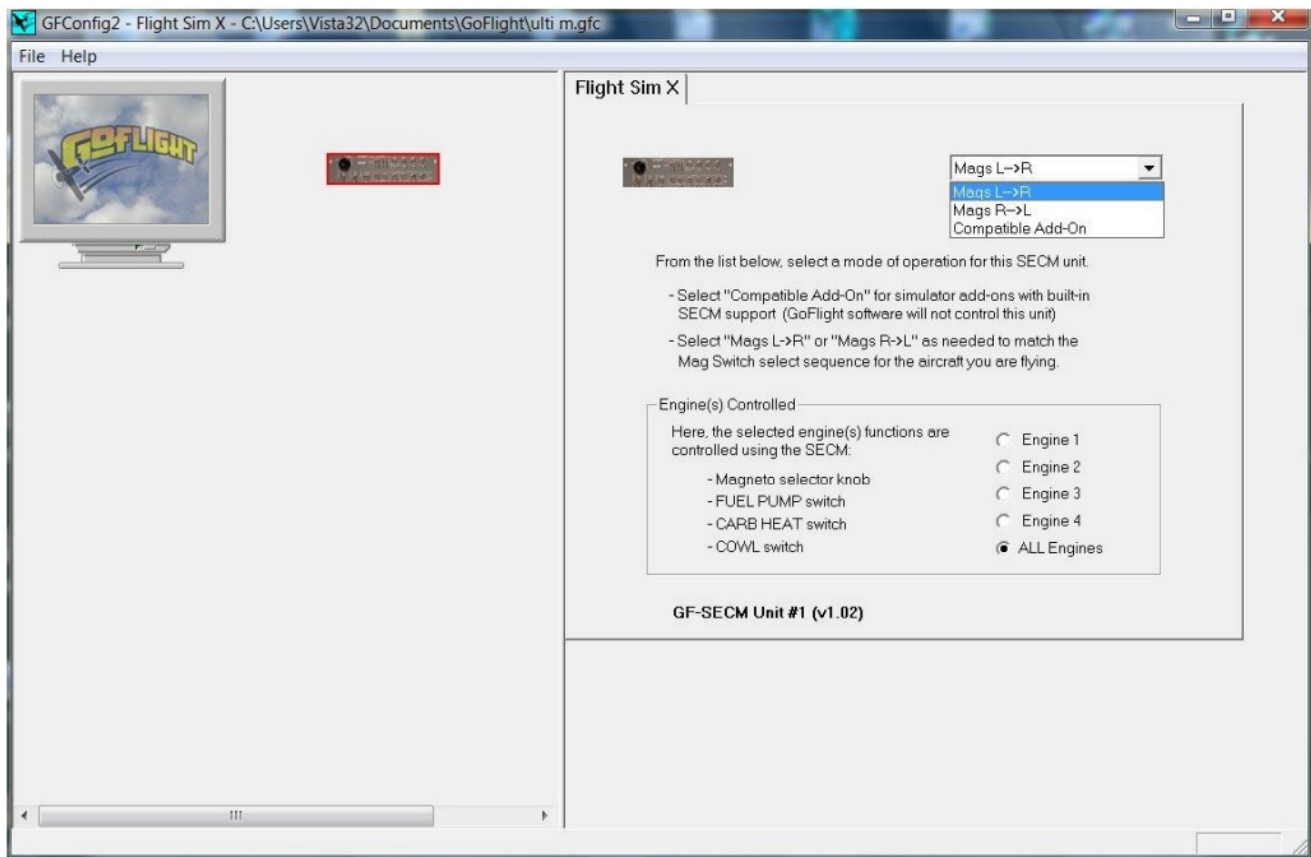
Software Installation

NOTE If you own other GoFlight hardware and have already installed the most current version of software on your system, you do not need to install the software again.

Simply skip the software installation steps in the instructions below.

3. Get on line and go to www.goflightinc.com.
4. On the GoFlight home page click Support.
5. Click on “GF-Config x.xx” to download the latest module drivers and configuration software.
6. Click “Run” or “Save” and follow the instruction to install the software.

If the software installer detects that GoFlight software is already installed on your system, it will prompt you to overwrite. Click the Yes button to overwrite the existing version of GoFlight software. This is useful if you wish to keep the configuration settings for other GoFlight modules installed on your system. However, you should first make sure that the software you are overwriting is an older version and not a newer one.



Microsoft Flight Simulator FS9 or FSX

The GF-SECM is recognized by these Microsoft Flight Simulator versions and is fully compatible with either version.

Other Software

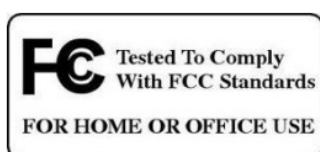
For information on using the GF-SECM with other software programs, please consult our technical support resources available on the GoFlight Web site at <http://www.goflightinc.com>.

GF-SECM Warranty

This product is warranted to the original purchaser to be free from defects in materials and workmanship for a period of one(1) year from the date of purchase. During this warranty period, GoFlight Technologies, Inc. ® ("GoFlight") will, at its option, repair or replace, at no charge, any component determined to be defective. The liability under this warranty is limited to the repair and/or replacement of the defect or defective part, and does not include shipping expenses. This warranty does not apply if, in the determination of GoFlight, this product has been damaged by accident, abuse, improper usage, or as a result of service or modification by anyone other than GoFlight.

NO OTHER WARRANTIES ARE EXPRESSED OR IMPLIED, INCLUDING BUT NOT LIMITED TO IMPLIED WARRANTIES OF SALABILITY AND FITNESS FOR A PARTICULAR PURPOSE. GOFLIGHT TECHNOLOGIES, INC. IS NOT RESPONSIBLE FOR CONSEQUENTIAL DAMAGES. SOME STATES DO NOT ALLOW EXCLUSION OR LIMITATION OF INCIDENTAL OR CONSEQUENTIAL DAMAGES, SO THE ABOVE LIMITATION OR EXCLUSION MAY NOT APPLY TO YOU.

This warranty gives you specific legal rights, and you may also have other rights which vary from state to state.



Phone: 1-503-895-0242


www.goflightinc.com

P/N GF-SECM-vPOH-002 Revision 2.2. 25Sep2010

Copyright © 2010 GoFlight Technologies, Inc. All rights reserved.

Virtual Pilot Operating Handbook

Documents / Resources

| | |
|---|--|
|  | <p>GOFLIGHT GF-SECM Single Engine Control Module [pdf] Owner's Manual GF-SECM Single Engine Control Module, GF-SECM, Single Engine Control Module, Engine Control Module, Control Module</p> |
|---|--|

References

-  [All-guides – Innovative Search Service of Online Manuals](#)