




gofanco G4-0152A 4K30 4×1 HDMI Multi Viewer Switcher User Guide

[Home](#) » [gofanco](#) » [gofanco G4-0152A 4K30 4×1 HDMI Multi Viewer Switcher User Guide](#) 

Contents

- [1 gofanco G4-0152A 4K30 4×1 HDMI Multi Viewer Switcher](#)
- [2 Product Information](#)
- [3 Product Usage Instructions](#)
 - [3.1 Hardware Installation](#)
 - [3.2 Device Control](#)
 - [3.2.1 Video Mode Button](#)
 - [3.2.2 Audio Selection Button](#)
 - [3.3 Remote Control](#)
 - [3.4 Important Safety Notices](#)
 - [3.5 Features](#)
 - [3.6 Package Contents](#)
 - [3.7 Installation Requirements](#)
 - [3.8 Product Layout](#)
 - [3.9 Hardware Installation](#)
 - [3.10 Connection Diagram](#)
 - [3.11 Device Control](#)
 - [3.12 Video Sub-Modes](#)
 - [3.13 Remote Control](#)
 - [3.14 Specifications](#)
- [4 Documents / Resources](#)
- [5 Related Posts](#)





Product Information

The 4K30 4×1 HDMI Multi-Viewer, also known as QuadView4K, is a device manufactured by gofanco. It is designed to meet your connectivity needs and provide optimum performance and safety. The product allows you to connect up to four HDMI sources to one HDMI display. It supports various video output modes, audio selection, and can be controlled through the front panel buttons or the included remote control. The Multi-Viewer also features an IR window for receiving signals from the remote control and an RS232 port for PC control.

Product Usage Instructions

Please follow the steps below for proper installation and usage of the 4K30 4×1 HDMI Multi-Viewer:

Hardware Installation

1. Power off all devices, including your HDMI source(s) and HDMI display.
2. Connect your HDMI source device(s) to the HDMI In connectors on the Multi-Viewer using HDMI cables (not included).
3. Connect your HDMI display to the HDMI Out connector on the Multi-Viewer using an HDMI cable (not included).
4. Plug the included power adapter into the Multi-Viewer's power jack.
5. Plug the power adapter into a reliable power outlet.
6. Power on all devices.

Device Control

The 4K30 Multi-Viewer offers different video modes and audio selection options. Use the following controls to navigate through the modes:

Video Mode Button

Press the Video Mode button, located on the front panel or included remote control, to select the video sub-mode. The available video modes are:

- Quad: Displays all four input sources simultaneously.
- Triple: Displays three input sources simultaneously.

- Dual: Displays two input sources simultaneously.
- Single/Full Screen: Displays a single input source in full screen.

Audio Selection Button

Use the Audio Selection button, located on the front panel, to select the audio mode. Press the button repeatedly to cycle through the available audio options:

- Input 1
- Input 2
- Input 3
- Input 4
- Mute

Remote Control

The included remote control provides convenient access to various functions of the Multi-Viewer:

- Four Pictures: Press to select quadview mode.
- Audio: Press to cycle through audio modes – Input 1, Input 2, Input 3, Input 4, Mute.
- Mode: Press to switch between different video modes. Refer to the Video Mode Button instructions for more information.
- Input 1-4: Press to select an input device for display in single screen mode.
- Back Button: Press to select the previous input source.
- Next Button: Press to select the next input source.
- Resolution Button: Press to select resolution output (specific instructions not provided).

Please refer to the User's Guide or visit www.gofanco.com for more detailed information and support regarding the product.

Thank you for purchasing from gofanco. Our products aim to meet all your connectivity needs wherever you go. For optimum performance and safety, please read the instructions carefully and keep this User's Guide for future reference. If you need more information about our products, please visit www.gofanco.com. For technical support, email us at support@gofanco.com. For drivers or manual download, please go to www.gofanco.com/downloads.

Important Safety Notices

Please read safety instructions carefully before installation and operation.

- Please pay close attention to all warnings and hints for this device
- Do not expose this unit to rain, heavy moisture, or liquid
- Do not put any items into the device or attempt to modify its operation
- Do not repair the device or open the enclosure without professional guidance to avoid electric shocks. Doing so may void your warranty
- Keep the product in a well-ventilated location to avoid damage from overheating

- Shut off power and make sure environment is safe before installation
- Do not plug the HDMI cables in/out when the device is in use to avoid cable damage. Make sure they are plugged into the correct ports

Introduction

The 4K30 4×1 HDMI Multi-Viewer allows you to view four HDMI source devices on an HDMI display.

Features

- Simultaneously view four video sources on a display
- Supports Quad, Triple, Dual, and Single/Full screen modes
- Supports seamless switching
- Supported resolutions: 4K @30Hz, 1080p, 720p
- Control methods: Remote control and front panel button
- Simple Plug & Play installation

Package Contents

- 4K30 4×1 HDMI Multi-Viewer
- Power adapter (5V/1A)
- Remote control
- RS232 cable
- User guide

Installation Requirements

- HDMI source devices (DVD player, set top box, PC, etc.)
- HDMI display device (SDTV/Monitor, HDTV/Monitor, projector, etc.)

Product Layout

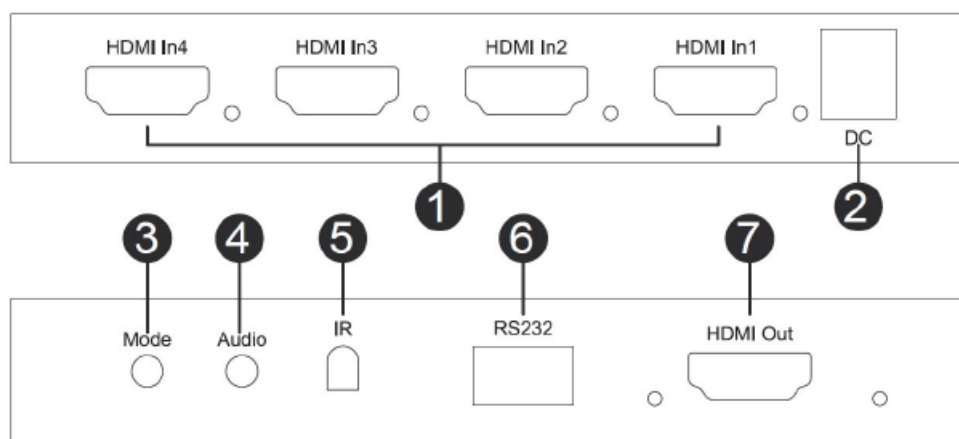


Figure 1: 4K30 Multi-Viewer Layout

1. HDMI Inputs (1-4): Connect to your HDMI sources using HDMI cables (HDMI cables not included)
2. Power Jack: Connect to the included power adapter
3. Video Mode Button: Press to select the video output mode – see Video Mode on page 6 for more information
4. Audio Button: Press to select the audio mode – see Audio Selection Button of page 9 for more information
5. IR Window: Receives IR signals from the included remote control
6. RS232: Connects to your PC's serial port using the included RS232 cable for PC control
7. HDMI Out: Connects to your HDMI display using an HDMI cable (HDMI cable not included)

Hardware Installation

1. Power off all devices including your HDMI source(s) and HDMI display.
2. Connect your HDMI source device(s) to the HDMI In connectors with HDMI cables (HDMI cables not included).
3. Connect your HDMI display to the HDMI Out connector with an HDMI cable (HDMI cable not included).
4. Plug the included power adapter into the Multi-Viewer's power jack, then plug the power adapter into a reliable power outlet.
5. Power on all devices.
6. The Multi-Viewer is ready for use.

Connection Diagram

The diagram shows the typical devices used with the Multi-Viewer.



Figure 2: Connection Diagram

Device Control

Video Mode Button

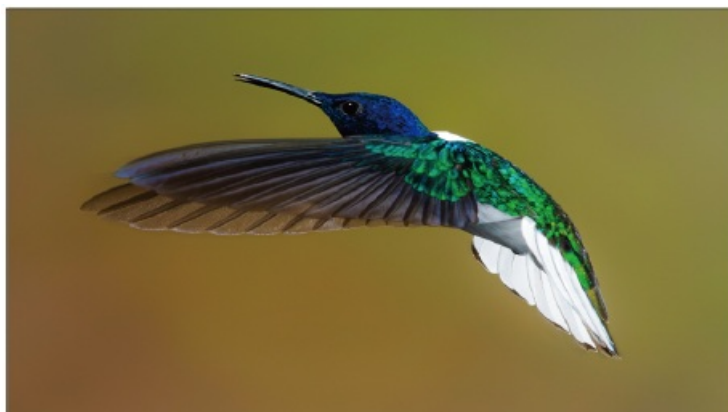
There are four main modes: Quad, Triple, Dual, Single/Full Screen. Within each mode there are sub-modes to which you can choose screen positions. Use the video mode button, located on the front panel or included remote control, to select the video sub-mode.

Video Sub-mode Selection Order

1. Single View: Input 1
2. Single View: Input 2
3. Single View: Input 3
4. Single View: Input 4
5. Up/Down Full Screen: Input 1 & Input 2
6. Up/Down Standard Screen: Input 1 & Input 2
7. Up/Down Full Screen: Input 3 & Input 4
8. Up/Down Standard Screen: Input 3 & Input 4
9. Side by Side Full Screen: Input 1 & Input 2
10. Side by Side Standard Screen: Input 1 & Input 2
11. Side by Side Full Screen: Input 3 & Input 4
12. Side by Side Standard Screen: Input 3 & Input 4
13. PIP: Input 1 & Input 2
14. PIP: Input 2 & Input 1
15. PIP: Input 3 & Input 4
16. PIP: Input 4 & Input 3
17. 3 Screens (Portrait): Inputs 1-2-3
18. Quad (1 lg x 3 sm): Input 1 & Input 2, 3, 4
19. Quad (1 lg x 3 sm): Input 2 & Input 1, 3, 4
20. Quad (1 lg & 3 sm): Input 3 & Input 1, 2, 4
21. Quad (1 lg & 3 sm): Input 4 & Input 1, 2, 3
22. Quad "H": Input 1, Input 2 & 3, Input 4
23. 2x2 Standard Quadview: Input 1/ Input 2 & Input 3/Input 4

Video Sub-Modes

Single Screen



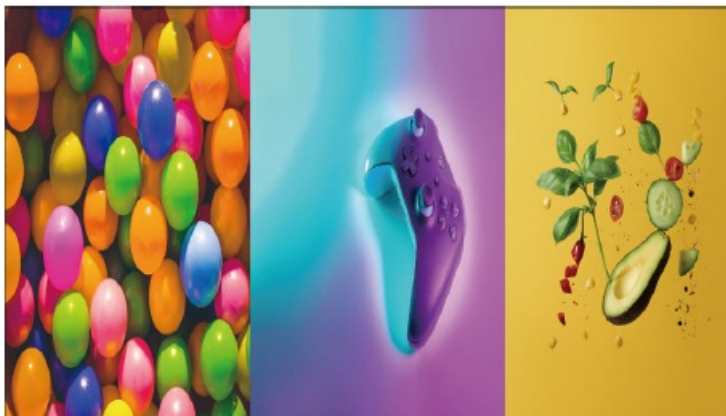
Left and Right Dual



Up and Down Dual



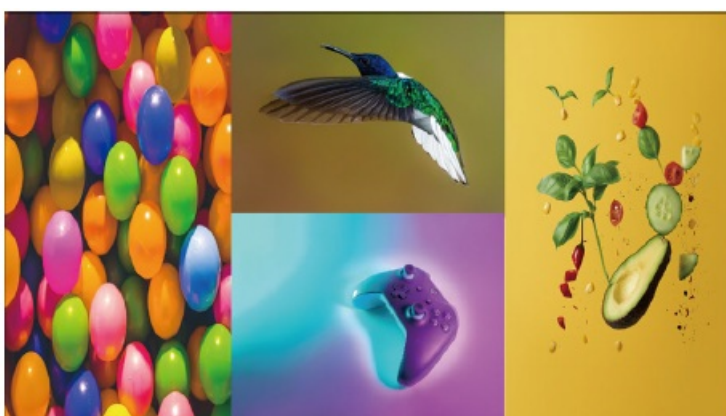
3x1 Mode



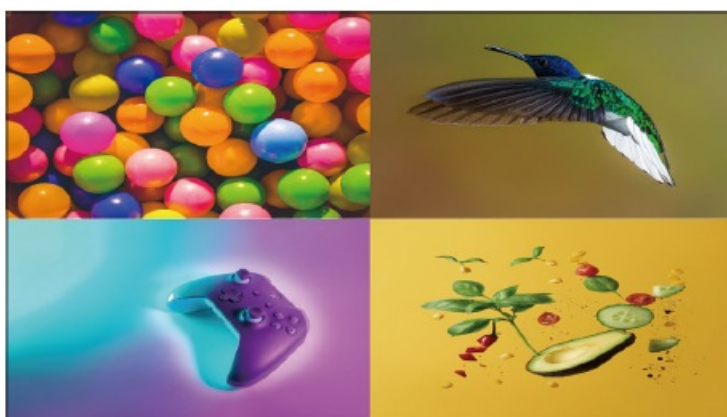
One Large and Three Small



Four “H” Mode



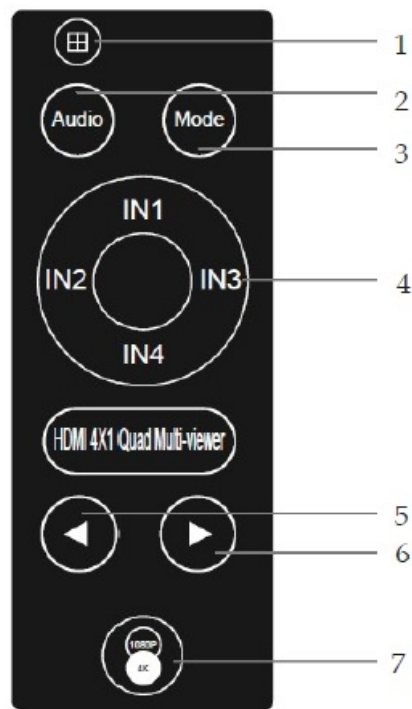
Standard Quadview Mode



Audio Selection Button

Use the Audio button, located on the front panel, to select the audio mode in order: Input 1, Input 2, Input 3, Input 4, Mute.

Remote Control



1. Four Pictures: Press to select quadview mode
2. Audio: Press to select audio mode, in order – Input 1, Input 2, Input 3, Input 4, Mute
3. Mode: Press to select between the different video modes – see page 6 for more information
4. Input 1-4: Press to select an input device to display in single screen mode
5. Back Button: Press to select the previous input source
6. Next Button: Press to select the next input source
7. Resolution Button: Press to select resolution output, in order – 720p, 1080p, 4K30

RS232 Control

Connect the 4K 4x1 Multi-Viewer to a PC using an RS232 cable.

COM Port Setting

- Baud Rate: 9600
- Parity: None
- Data Bits: 8
- Stop Bits: 1

RS232 Command-List

Use any RS232 terminal program of your choice, such as Hyperterminal or RS232 control.

Video Mode	Command
Left/Right Dual Screen: Input1, Input2	G44g
Left/Right Dual Screen: Input3, Input4	G42g
Up/Down Dual Screen: Input1, Input2	G45g
Up/Down Dual Screen: Input3, Input4	G46g
Single Screen: Input 1	G19g
Single Screen: Input 2	G1Bg
Single Screen: Input 3	G11g
Single Screen: Input 4	G15g
Quad View +	G40g
Quad View H	G41g
3 Screens: Input 1, Input 2, Input 3	G04g
Quad 1 Large & 3 Small: Input 1	G5Ag
Quad 1 Large & 3 Small; Input 2	G4Cg
Quad 1 Large & 3 Small: Input 3	G52g
Quad 1 Large & 3 Small: Input 4	G4Bg
PIP	G03g
Output Resolution Switching 1080p/720p	G02g

Specifications

Resolution	4K30Hz, 1080p, or 720p
Audio Format	PCM2
HDMI Cable Length	Up to 10 meters
Bandwidth (max)	340MHz
Operating Current	0.6A
Power Adapter	Input: 100V-240VAC, 50-60 Hz Output: DC 5V/1A
Operating Temperature	32-113 F (0-45 C)
Dimensions	4.8"x 4.0"x0.8" (121x102x19 mm)
Weight	0.48 lbs (220g)


Disclaimer

The product name and brand name may be registered trademarks of related manufacturers. TM and ® may be omitted on the user's guide. The pictures on the user's guide are just for reference, and there may be some slight

differences with the actual products.
We reserve the right to make changes without prior notice to a product or system described herein to improve reliability, function, or design.

Thank you for choosing gofanco
www.gofanco.com

Documents / Resources

	<p>gofanco G4-0152A 4K30 4x1 HDMI Multi Viewer Switcher [pdf] User Guide</p> <p>QuadView4K, 04-0290A, G4-0152A, G4-0152A 4K30 4x1 HDMI Multi Viewer Switcher, 4K30 4x1 HDMI Multi Viewer Switcher, HDMI Multi Viewer Switcher, Multi Viewer Switcher, Viewer Switcher, Switcher</p>
---	---