



gofanco Audio KVM Switch with USB 3.1 Gen 1 HUB User Guide

[Home](#) » [gofanco](#) » gofanco Audio KVM Switch with USB 3.1 Gen 1 HUB User Guide 

Contents

1 gofanco® PRO-KVMDP-2P User's Guide

- 1.1 Safety and Notice**
- 1.2 Introduction**
- 1.3 Features**
- 1.4 Package Contents**
- 1.5 Specifications**
- 1.6 Connection Diagram**
- 1.7 Panel Description**
- 1.8 Hotkey**
- 1.9 Firmware update**

2 Documents / Resources

- 2.1 References**

3 Related Posts

gofanco® PRO-KVMDP-2P User's Guide

2-Port DisplayPort 1.2/Audio KVM Switch with USB 3.1 Gen 1 HUB



Made in Taiwan

Congratulations for owning a gofanco product. Our products aim to meet all your connectivity needs wherever you go.

Have fun with our products!

Please read this manual carefully before first use.

If you need more information about our products, please visit www.gofanco.com.

For technical support, please email us at support@gofanco.com.

For drivers/manuals download, please go to <http://www.gofanco.com/download>.

Safety and Notice

Please read all of these instructions carefully before you use the device. Save this manual for future reference.

The **PRO-KVMDP-2P 2-Port DisplayPort 1.2/Audio KVM Switch with USB 3.1 Gen 1 HUB** has been tested for conformance to safety regulations and requirements, and has been certified for international use. However, like all electronic equipments, the PRO-KVMDP-2P should be used with care. Please read and follow the safety instructions to protect yourself from possible injury and to minimize the risk of damage to the unit.

- Follow all instructions and warnings marked on this unit.
- Do not attempt to service this unit yourself, except where explained in this manual.
- Provide proper ventilation and air circulation and do not use near water.
- Keep objects that might damage the device and assure that the placement of this unit is on a stable surface.
- Use only the power adapter and power cords and connection cables designed for this unit.

- Do not use liquid or aerosol cleaners to clean this unit. Always unplug the power to the device before cleaning.

Introduction

The **PRO-KVMDP-2P 2-Port DisplayPort 1.2/Audio KVM Switch with USB 3.1 Gen 1 HUB** provides the most flexible and cost effective solution in the market for multiple computer management at home & office. The KVM switch can control 2 DisplayPort USB computers by one set of console peripherals (keyboard, mouse & monitor). With built-in USB 3.0 hub, users can share USB peripheral devices between connected computers.

Features

- DP 1.2 compliant
 - Supports 4K2K@60 4:4:4 8bits
 - HDCP 1.3 compliant
 - Supports separate line input and output
 - Plug and Play without any driver needed
 - Supports built-in 4-port USB 3.1 Gen 1 HUB to share USB devices
 - Supports independent HID keyboard & mouse ports
 - Supports hotkeys function
 - Maximum total bandwidth: up to 21.6Gbps
 - EDID Bypass
 - Firmware upgradable for support of new features and technology enhancements
 - The KVM can switch every input by push buttons
1. DisplayPort 1.2 spec does NOT support HDR
 2. The suggested DisplayPort cable length is 1.5m to 2m
 3. DisplayPort does NOT support dongle device

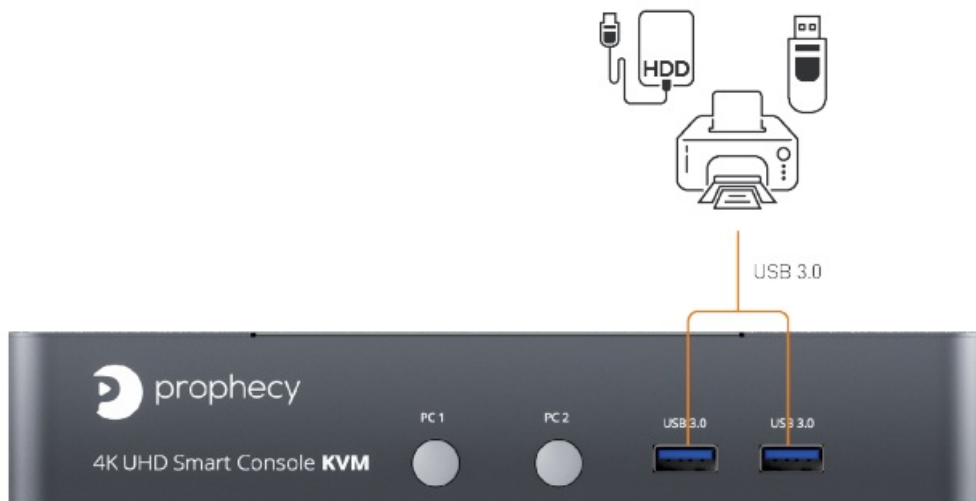
Package Contents

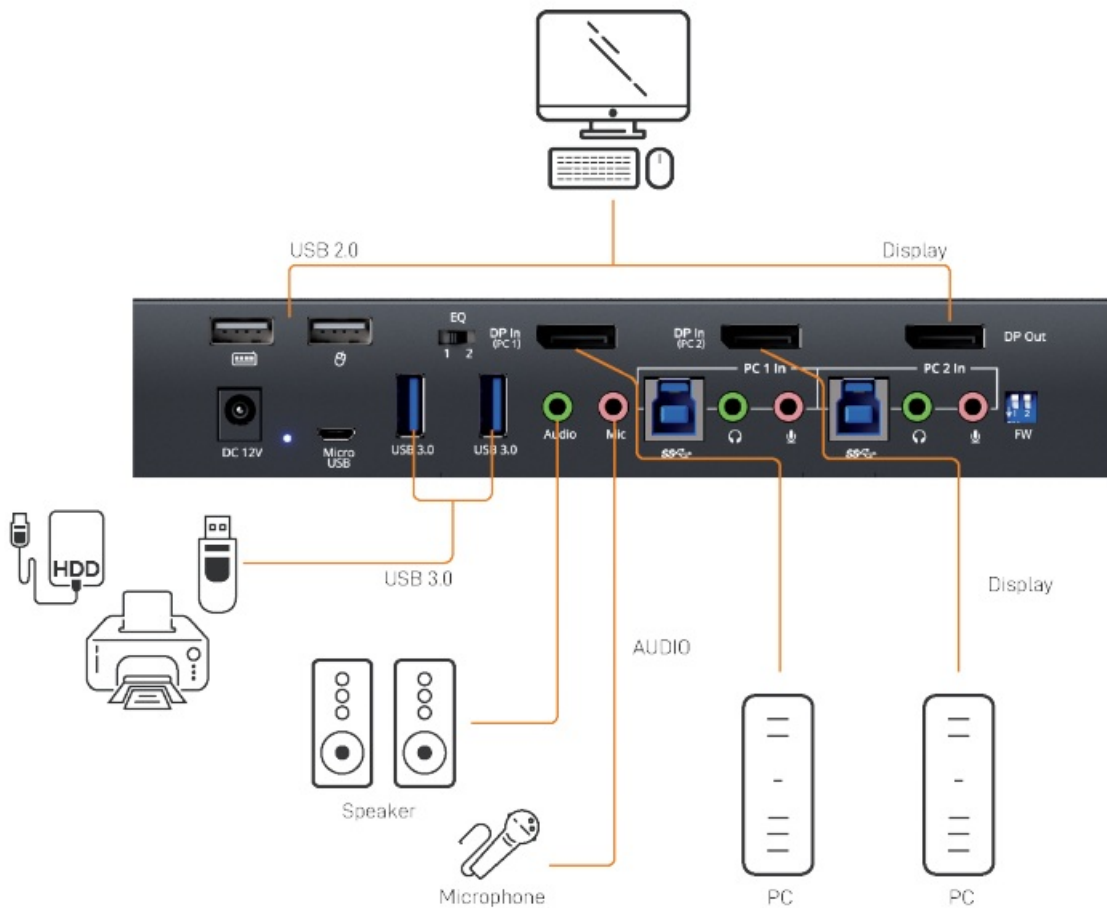
- 1x PRO-KVMDP-2P
- 1x DC 12V power supply
- 1x User Manual

Specifications

Item		Description
Technical		
Role of usage		2-Port DisplayPort KVM Switch
DP compliance		DP 1.2
Maximum total bandwidth		21.6Gbps
Video support		Up to 4K2K@60 4:4:4 8bits
ESD protection		Human body model — ±15kV [air-gap discharge] & ±8kV [contact discharge]
Input		2x DisplayPort/ 2x USB 3.1 Gen 1(type B)/ 3x 3.5mm phone jack
Output		1x DisplayPort/ 4x USB 3.1 Gen 1(type A)/ 2x USB 1.1(type A)/ 3x 3.5mm phone jack
HDMI connector		Normal Type
USB connector		USB3.1 Gen 1 type A / type B
Mechanical		
Housing		Metal enclosure
Dimensions [L x D x H]	Model	202 x 112 x 37mm [7.9" x 4.4" x 1.5"]
	Package	331 x 162 x 204mm [1' x 6.4" x 8"]
	Carton	500 x 432 x 340mm [1'6" x 1'4" x 1'1"]
Weight	Model	691g [1.5 lbs]
	Package	1835g [4lbs]
Power supply		12V DC
Power consumption		6 Watts [max]
Operation temperature		0~40°C [32~104°F]
Storage temperature		-20~60°C [-4~140°F]
Relative humidity		20~90% RH [no condensation]

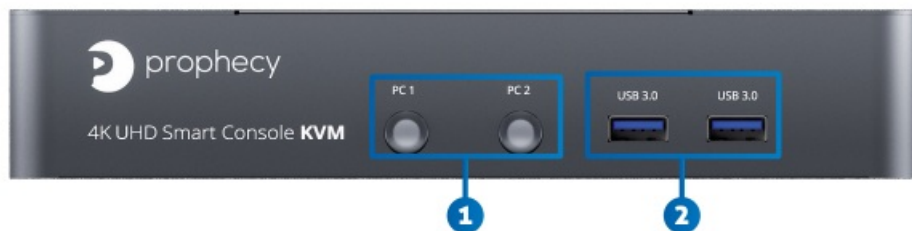
Connection Diagram





Panel Description

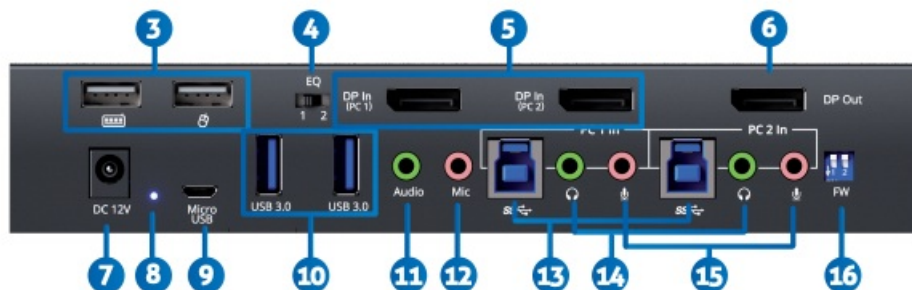
Front Panel



1. Port 1-2 Selection Push Button: Switch between computers

2. USB 3.1 Gen 1 Hub: Connect to USB devices

Rear Panel



3. Console USB Ports: Connect to keyboard & mouse

4. Signal Level: Adjust the equalization control to receive DisplayPort signals.

[Left]: EQ is weaker (short DisplayPort cables)

[Right]: EQ is stronger (long DisplayPort cables)

5. KVM Video IN 1-2 (DP IN 1-2): Connect the DP cable to PC

6. Console Video OUT (DP OUT): Connect the DP cable to a display

7. +12V DC: +12V DC power jack

8. Power Status: Power indicator LED

9. Micro USB: For F/W update

10. USB 3.1 Gen 1 Hub: Connect to USB devices

11. Console Stereo Audio OUT: Connect to analog stereo audio speaker

12. Console Stereo Audio IN: Connect to analog stereo audio source

13. KVM USB 3.1 Gen 1 (Type B): Connect the USB cable to PC

14. KVM Stereo Audio IN 1-2: Connect the stereo cable to PC

15. KVM Stereo Audio OUT 1-2: Connect the stereo cable to PC

16. 2-Pin Dip Switch: For F/W update

Position		Description
PIN#1	OFF[↑]	Working mode
	ON[↓]	KVM Firmware Update mode
PIN#2	OFF[↑]	Reserved
	ON[↓]	Reserved

Hotkey

Default setting, all of the following commands begin by pressing the [Scroll Lock] key twice. Please follow the hotkey command listed below for selected operating functions:

Hot key Definition	
[Scroll Lock] + [Scroll Lock] + [Ctrl] + [Enter]	Change [Scroll Lock] [Scroll Lock] to [Ctrl] [Ctrl] *
[Ctrl] + [Ctrl] + [Scroll Lock] + [Enter]	Change [Ctrl] [Ctrl] to [Scroll Lock] [Scroll Lock]
[Scroll Lock] + [Scroll Lock] + [NUMBER1~2] + [Enter]	Switch input 1~2 source to output
[Scroll Lock] + [Scroll Lock] + [S]	Auto Scan/ Exit Auto Scan mode**
[Scroll Lock] + [Scroll Lock] + [I] + [N] + [Enter]	Auto Scan Set [N]: 5~599 ***
[Scroll Lock] + [Scroll Lock] + [+]	Auto Scan Interval Add 5 Seconds
[Scroll Lock] + [Scroll Lock] + [-]	Auto Scan Interval Subtract 5 Seconds
[Scroll Lock] + [Scroll Lock] + [L] + [A]	Audio Lock/ Audio Unlock
[Scroll Lock] + [Scroll Lock] + [L] + [U]	USB Lock/ USB Unlock

* You can change the default setting to [Ctrl] [Ctrl], if you are using a Mac keyboard or a keyboard that does not have Scroll Lock key

** Auto scan through each channel for quick screen browsing (default = 15 seconds)

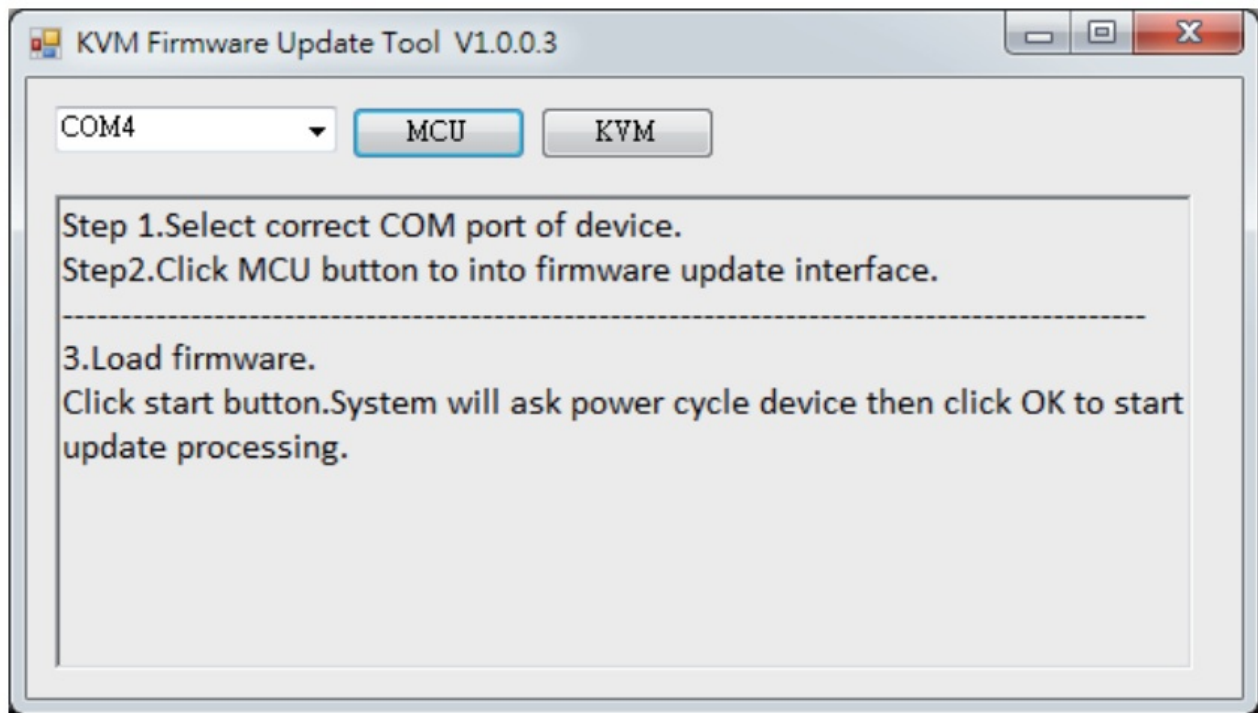
*** You can set the auto scan interval according to the steps. (N = Number, 5~599)

Firmware update

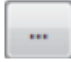
Firmware update is proceeded through Micro-USB

KVM F/W update

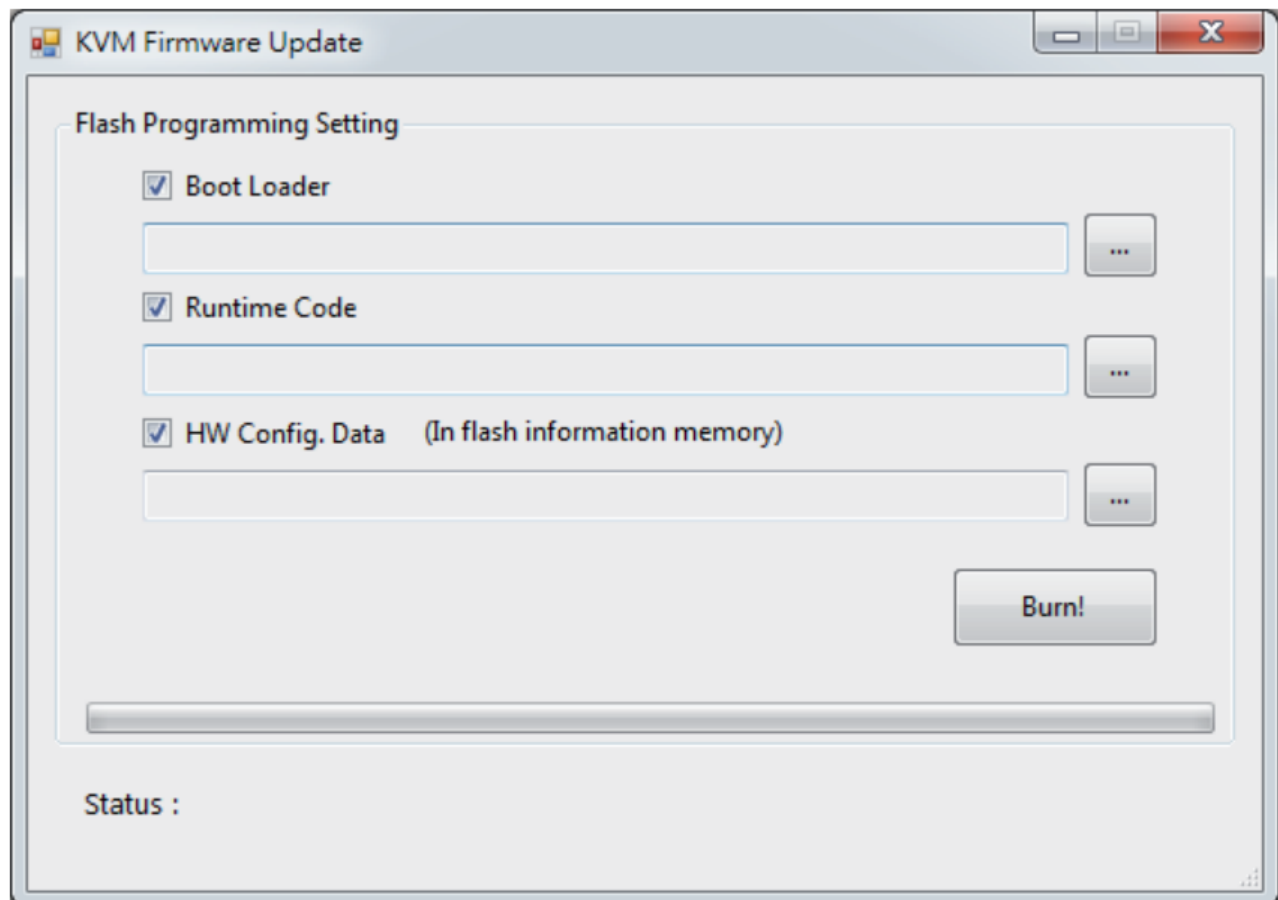
1. Connect the Micro-USB to USB cable between PC and device
2. Set dip switch PIN#1 to ON[↓] and then power on device
3. Open firmware update software and then select COM Port



4. Click  button to open “KVM Firmware Update” windows.


Check all items and click each  button to select the file which you want to write into device.

Click the  button to start firmware update



5. After updating, please set the dip switch PIN#1 to OFF [1] and power cycle the device

Documents / Resources

	<p>gofanco Audio KVM Switch with USB 3.1 Gen 1 HUB [pdf] User Guide</p> <p>Audio KVM Switch with USB 3.1 Gen 1 HUB, 2-Port DisplayPort 1.2 Audio KVM Switch with USB 3.1 Gen 1 HUB, PRO-KVMDP-2P</p>
--	--

References

- [gofanco® | Professional & Residential AV/IT Solutions](#)
- [Downloads | gofanco](#)

Manuals+.