



Contents [[hide](#)]

- [1 Godox Cube-S Charging Case Wireless Lavalier Microphone](#)
- [2 Main Features](#)
- [3 Structure of Product](#)
- [4 What's Inside](#)
- [5 Instructions for Use](#)
- [6 Apple FindMy](#)
- [7 Technical Data](#)
- [8 Maintenance](#)
- [9 FCC Statement](#)
- [10 Warranty](#)
- [11 Documents / Resources](#)
 - [11.1 References](#)



Godox Cube-S Charging Case Wireless Lavalier Microphone



Foreword

Thank you for purchasing!

Cube-S Charging Case is the charging case of Godox's latest wireless microphone system. It has three built-in slots, which can store two transmitters and one receiver, and charge the transmitters, while the indicators conveniently show the battery level and charging status.

Please read this manual carefully before using to make sure the correct operation and exert the optimum function.

Main Features

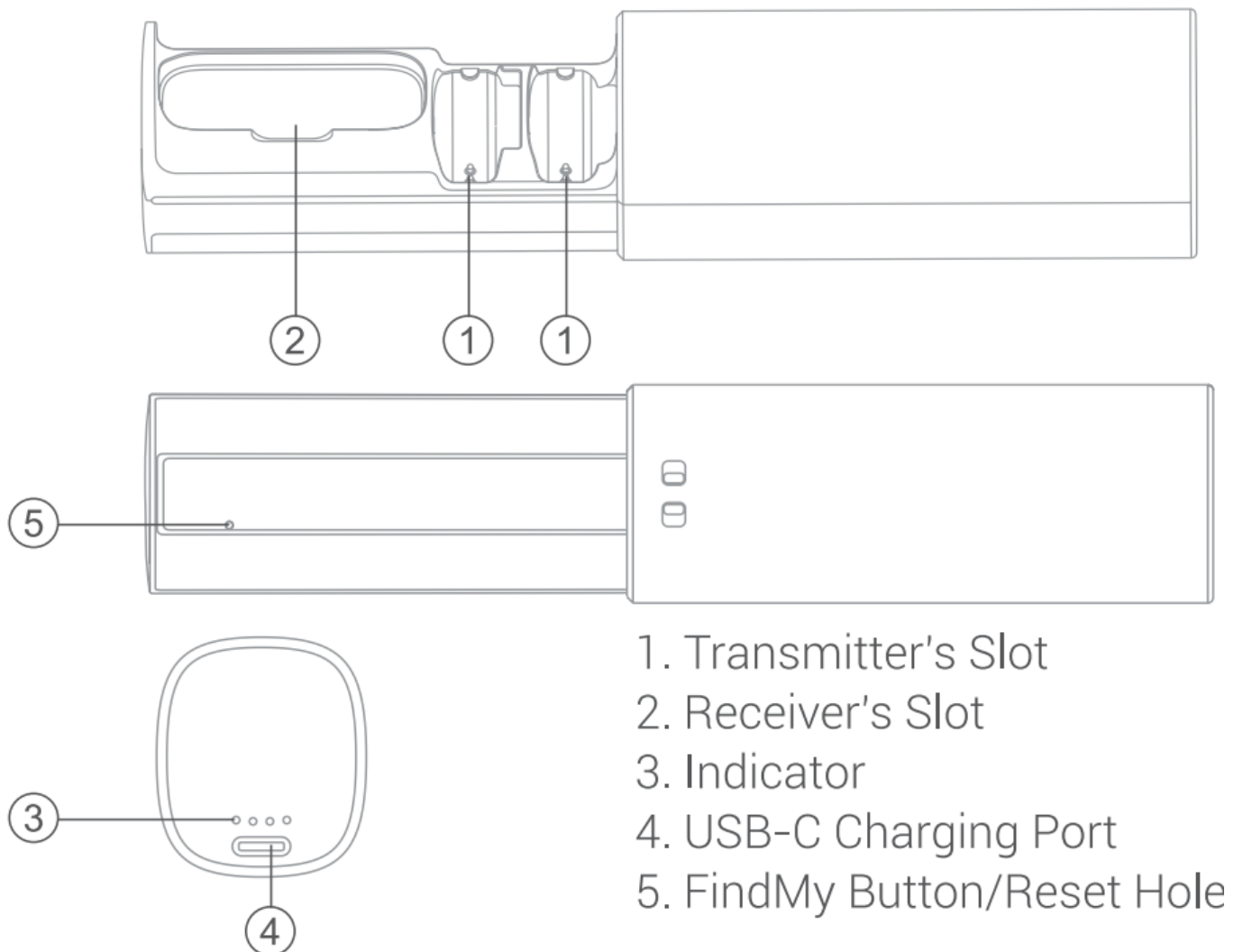
- Built-in lithium battery can charge two transmitters.
- Support Apple FindMy quick retrieval
- Support charging through USB-C cable.

Warning

- Do not disassemble. Should repairs become necessary, this product must be sent to our Company or an authorized maintenance center
- Always keep this product dry. Do not use in rain or damp conditions.
- Do not leave or store this product in the environment of direct sunlight, near heating devices, or in hot, humid or dusty.

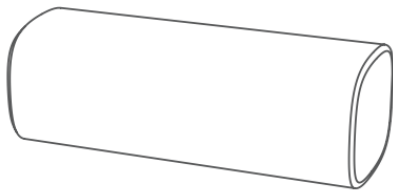
- Keep out of reach of children.
- Do not use in flammable and explosive environments. Pay attention to the relevant warning signs.
- Do not leave or store the product if the ambient temperature reads over 50°C
- Please read carefully and follow the warnings or instructions provided by the manufacturer

Structure of Product

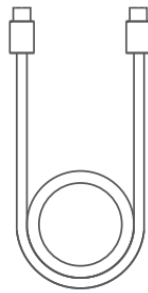


1. Transmitter's Slot
2. Receiver's Slot
3. Indicator
4. USB-C Charging Port
5. FindMy Button/Reset Hole

What's Inside



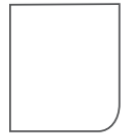
Charging Case
× 1



USB-A to USB-C
Data Cable × 1



Pin × 1



Instruction
Manual × 1

Note:

Due to continuous updates and upgrades of the products, there may be differences between the actual products and the pictures. Therefore, the pictures are for reference only, products to prevail in kind.

Instructions for Use

- **Put the devices Into the charging case and open the lid:** The case will first detect whether the devices are correctly inserted into the corresponding slots, if the pins inside touched the charging points of the devices, it will detect whether the devices are fully charged, if not, it will start charging until the devices are fully charged. The indicators will light up the lid is open, and turn off in 5s after the lid is closed.
- **Put the devices into the charging case and close the lid:** The devices will shut down and be charged until they are fully charged.
- **Charging the case itself:** The indicators on the charging case will flash incrementally, and be constant on after the charging case is fully charged.

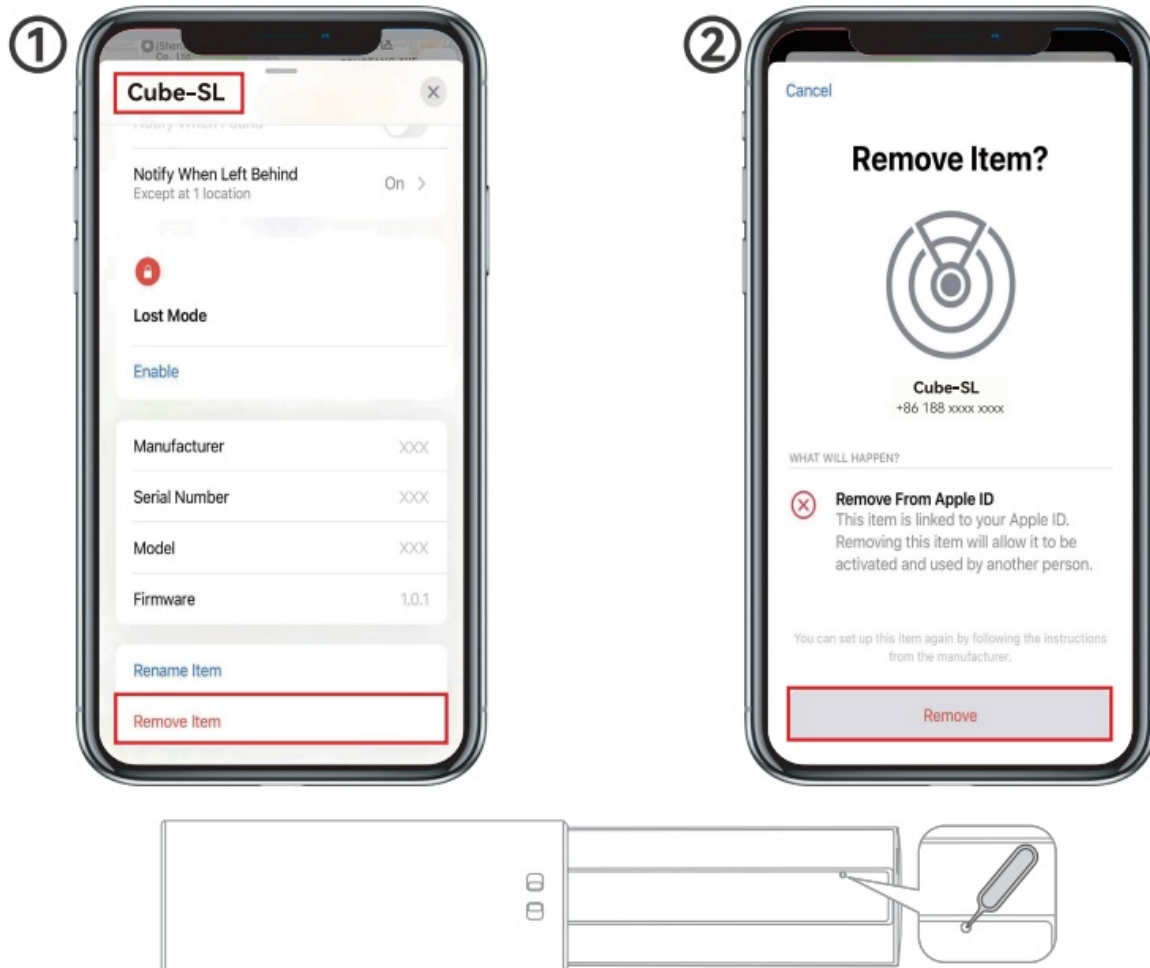
Indicator Status	Meaning
Indicators inside the charging case flash white	Charging the case
Indicators inside the charging case are constant on white	The case is fully charged

Apple FindMy

This function only applies to kit2 with charging case.

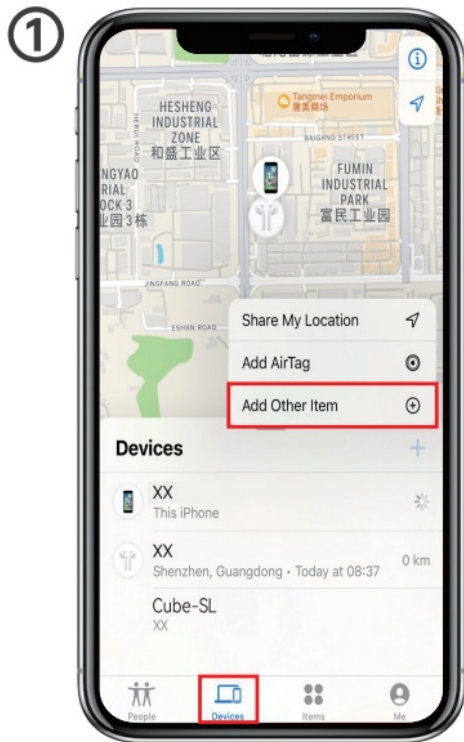
At first use, open the charging case, poke for a while the hole behind the case gently with the attached pin, wait for the alert tone.

If you need to return the product due to quality or objective reasons, make sure to remove it from your Apple devices first (refer to the instructions below), and reset the Apple Findmy function with pin (refer to the instructions below) to clear the link information.

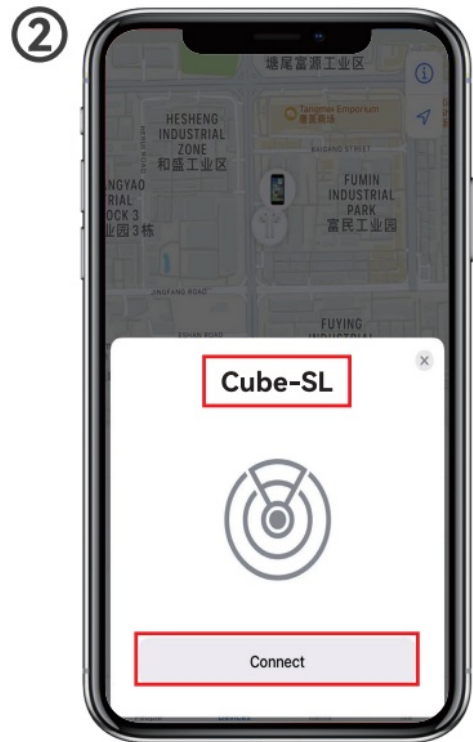


Note:

- Poke for 3s to turn on or off the function, the case will beep accordingly.
- **Confirm status:** double poke the hole, it will beep in function on status, but no alert tone in function off status
- **Function reset:** power on state, poke twice the hole, the case will beep, then poke for 4s until it beeps again, the factory reset is completed.



Open "FindMy" app in your smartphone, select "Device" and click "+", then "Add Other Item".

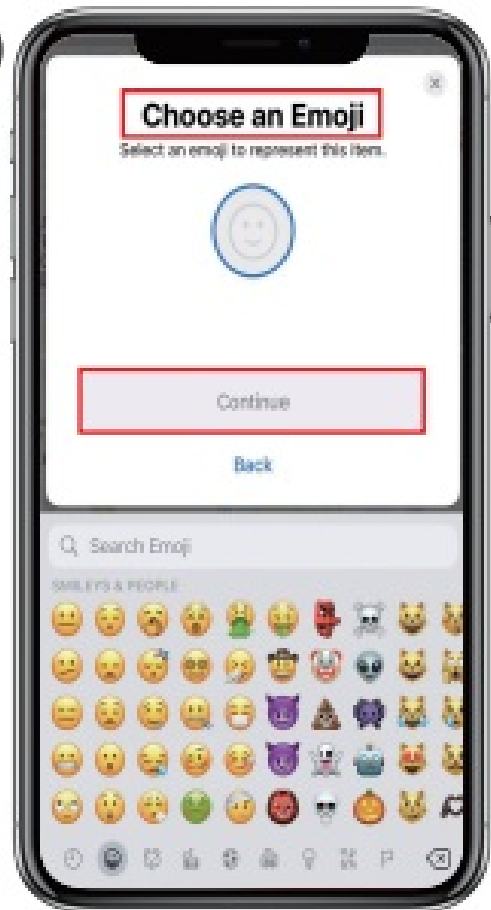


Search for "Cube-SL" and select "Connect".

3



4



Then "Name Item" and "Choose an Emoji".

5



Click "Agree" to link this product to your Apple ID.

Technical Data

Name	Charging case
Model	Cube-S Charging Case
USB-C Input	5V ~ 600mA
Output	5V ~ 0.3A(“2)
Total Output	5V ~ 0.6A
Battery Energy	850mAh/3.23Wh
Working Time	Charge 2 devices for about twice
Charging Time	Approx. 2h
Working Environment Temperature	– 10-50 °C
Charging Environment Temperature	0-45 °C
Dimension	3.46"x 1.22"x 1.40"
Net Weight	49g

Specifications and data may subject to changes without notice.

Maintenance

- **Avoid falling.** Strong collision or vibration may malfunction the device.
- **Keep dry.** This product is not waterproof. Malfunction, rust, and corrosion may occur and go beyond repair if soaked in water or exposed to high humidity
- **Avoid sudden temperature changes.** Condensation happens in sudden temperature changes such as the circumstance when taking the product out of a building with higher temperature to outside in winter. Please put the product in a handbag or plastic bag beforehand.
- **Keep away from strong magnetic field.** The strong static or magnetic field produced by devices such as radio transmitters leads to malfunction.

Specifications and data may subject to changes without notice.

FCC Statement

This device complies with part 15 of the FCC Rules. Operation is subject to the following two conditions:

- (1) This device may not cause harmful interference, and
- (2) this device must accept any interference received, including interference that may cause undesired operation.

Any Changes or modifications not expressly approved by the party responsible for compliance could void the user's authority to operate the equipment

Note: This equipment has been tested and found to comply with the limits for a Class B digital device, pursuant to part 15 of the FCC Rules. These limits are designed to provide reasonable protection against harmful interference in a residential installation. This equipment generates and uses can radiate radio frequency energy and, if not installed and used in accordance with the instructions, may cause harmful interference to radio communications. However, there is no guarantee that interference will not occur in a particular installation. If this equipment does cause harmful interference to radio or television reception, which can be determined by turning the equipment off and on, the user is encouraged to try to correct the interference by one or more of the following measures:

- Reorient or relocate the receiving antenna.
- Increase the separation between the equipment and receiver.
- Connect the equipment into an outlet on a circuit different from that to which the receiver is connected.
- Consult the dealer or an experienced radio/TV technician for help.

The device has been evaluated to meet general RF exposure requirements.

The device can be used in portable exposure condition without restriction.

Declaration of Conformity

GODOX Photo Equipment Co., Ltd. hereby declares that this equipment are in compliance with the essential requirements and other relevant provisions of Directive

2014/35/EU,2014/30/EU. They are allowed to be used in all EU member states. For more information of DoC, Please click this web link:

<https://www.godox.com/eu-declaration-of-conformity>

The device complies with RF specifications when the device used at 0mm from your body.

Warranty

Dear customers, as this warranty card is an important certificate to apply for our maintenance service, please fill in the following form in coordination with the seller and keep it. Thank you!

Product Information	Model	Product Code Number
Customer Information	Name	Contact Number
	Address	
Seller Information	Name	
	Contact Number	
	Address	
	Date of Sale	
Note		

Note: This form shall be sealed by the seller.

Applicable Products

The document applies to the products listed on the Product Maintenance Information (see below for further information). Other products or accessories (e.g. promotional items, giveaways and additional accessories attached, etc.) are not included in this warranty scope.

Warranty Period

The warranty period of products and accessories is implemented according to the relevant Product Maintenance Information. The warranty period is calculated from the

day(purchase date) when the product is bought for the first time, and the purchase date is considered as the date registered on the warranty card when buying the product

How to Get the Maintenance Service

If maintenance service is needed, you can directly contact the product distributor or authorized service institutions. You can also contact the Godox after-sales service call and we will offer you service. When applying for maintenance service, you should provide valid warranty card. If you cannot provide valid warranty card, we may offer you maintenance service once confirmed that the product or accessory is involved in the maintenance scope, but that shall not be considered as our obligation.

Inapplicable Cases

The guarantee and service offered by this document are not applicable in the following cases:

1. The product or accessory has expired its warranty period;
2. Breakage or damage caused by inappropriate usage, maintenance or preservation, such as improper packing, improper usage, improper plugging in/out external equipment, falling off or squeezing by external force, contacting or exposing to improper temperature, solvent, acid, base, flooding and damp environments, etc;
3. Breakage or damage caused by non-authorized institution or staff in the process of installation, maintenance, alteration, addition and detachment;
4. The original identifying information of product or accessory is modified, alternated, or removed;
5. No valid warranty card;
6. Breakage or damage caused by using illegally authorized, nonstandard or non-public released software;
7. Breakage or damage caused by force majeure or accident;
8. Breakage or damage that could not be attributed to the product itself.

Once met these situations above, you should seek solutions from the related responsible parties and Godox assumes no responsibility. The damage caused by parts, accessories and software that beyond the warranty period or scope is not included in our maintenance scope. The normal discoloration, abrasion and consumption are not the breakage within the maintenance scope

Maintenance and Service Support Information

The warranty period and service types of products are implemented according to the following Product Maintenance Information:

Product Type	Name	Maintenance Period(month)	Warranty Service Type
Parts	Product Main Body	12	Customer sends the product to designated site
	Battery	3	Customer sends the product to designated site
	Charger, Electrical Parts etc.	12	Customer sends the product to designated site
Other Items	Battery Case, Windscreen Foam, Wind Cap, Locking Device, Lanyard, Tie, Velcro Tape, Clip, Bag, Package etc.	No	Without warranty

Godox After-sale Service Call 0755-29609320-8062

Warning

Operating Frequency: 2402MHz- 2480MHz

Maximum EIRP Power: – 0.44dBm

Godox Audio Wechat
Official Account



Overseas Official
Accounts & Updates



GOOOX Photo Equipment Co., Ltd.


Add.: Building 2. Yaochuan Industrial Zone, Tangwei Community, Fuhal Street, Bao'an District,
Shenzhen 518703, China

Tel: +85-755-29609320(8062)

Fax: +85-755-25723423

E-mail. godox@godox.com

Documents / Resources

	<p>Godox Cube-S Charging Case Wireless Lavalier Microphone [pdf] User G uide</p> <p>Cube-S Charging Case Wireless Lavalier Microphone, Charging Case Wir eless Lavalier Microphone, Case Wireless Lavalier Microphone, Wireless Lavalier Microphone, Lavalier Microphone</p>
---	--

References

- [User Manual](#)

Godox

Case Wireless Lavalier Microphone, Charging Case Wireless Lavalier Microphone, Cube-S Charging Case Wireless Lavalier
Microphone, Godox, Lavalier Microphone, Wireless Lavalier Microphone

Leave a comment

Your email address will not be published. Required fields are marked *

Comment *

Name

Email

Website

☐ Save my name, email, and website in this browser for the next time I comment.

Post Comment

Search:

e.g. whirlpool wrf535swhz

Search

[Manuals+](#) | [Upload](#) | [Deep Search](#) | [Privacy Policy](#) | [@manuals.plus](#) | [YouTube](#)

This website is an independent publication and is neither affiliated with nor endorsed by any of the trademark owners. The "Bluetooth®" word mark and logos are registered trademarks owned by Bluetooth SIG, Inc. The "Wi-Fi®" word mark and logos are registered trademarks owned by the Wi-Fi Alliance. Any use of these marks on this website does not imply any affiliation with or endorsement.