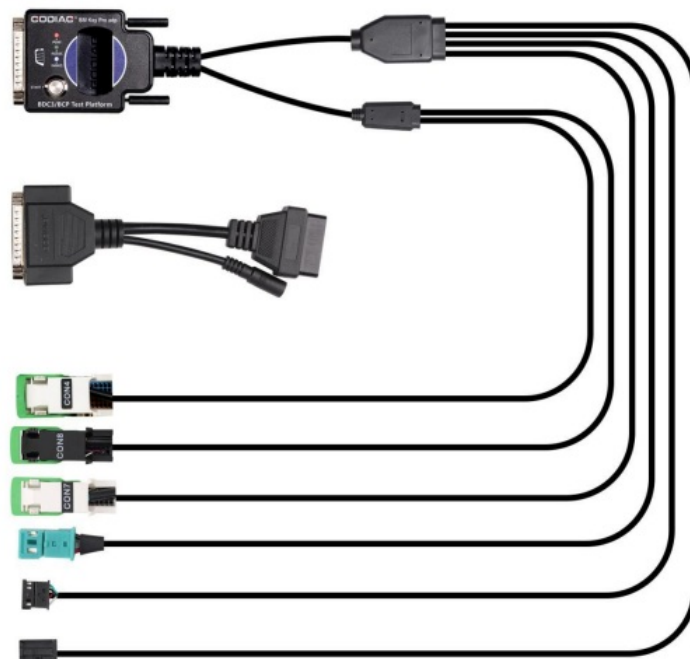


Contents [[hide](#)]

- [1 GODIAG 202506 Programming Test Platform](#)
- [2 Specifications](#)
- [3 Product Overview](#)
- [4 Functions](#)
- [5 Product Usage Instructions](#)
- [6 Accessories](#)
- [7 FAQ](#)
- [8 Documents / Resources](#)
 - [8.1 References](#)



GODIAG 202506 Programming Test Platform



Specifications

- **Product Name:** GODIAG For BMW BDC3/BCP Programming Test Platform
- **Model Number:** 202506
- **Functions:** Diagnose and program BMW BDC3/BCP modules

Product Overview

GODIAG for BMW BDC3/BCP Programming Test Platform streamlines immobilizer system management, key synchronization, and module diagnostics with unmatched reliability. All these powerful functions make it the ultimate all-in-one solution for professional engineers. GODIAG for BMW BDC3/BCP Programming Test Platform is your gateway to faster, safer, and more efficient diagnostics. Whether you're working on key synchronization, module programming, or instrument maintenance, this platform has got you covered.

Are you looking for a reliable and efficient way to diagnose and program BMW BDC3/BCP modules? Look no further! The GODIAG For BMW BDC3/BCP Programming Test Platform is here to revolutionize your diagnostic process. Designed with precision and ease of use in mind, this platform is a must-have tool for every BMW engineer and technician.

Functions

1. Used to detect whether the key and module are synchronized.
2. After the key and module are synchronized, the corresponding immo indicator light will light up and there will be a sound prompt.
3. The module off-vehicle diagnostic programming and coding are convenient for engineers to operate and can avoid the risk of other modules of the car being damaged.
4. The key sensor identification light is convenient for detecting the key and module identification.
5. The instrument lights up for instrument detection and maintenance.
6. Key remote control function and module synchronization test.
7. It supports ENET communication and can perform diagnostics, programming and

coding on the BDC3 module.

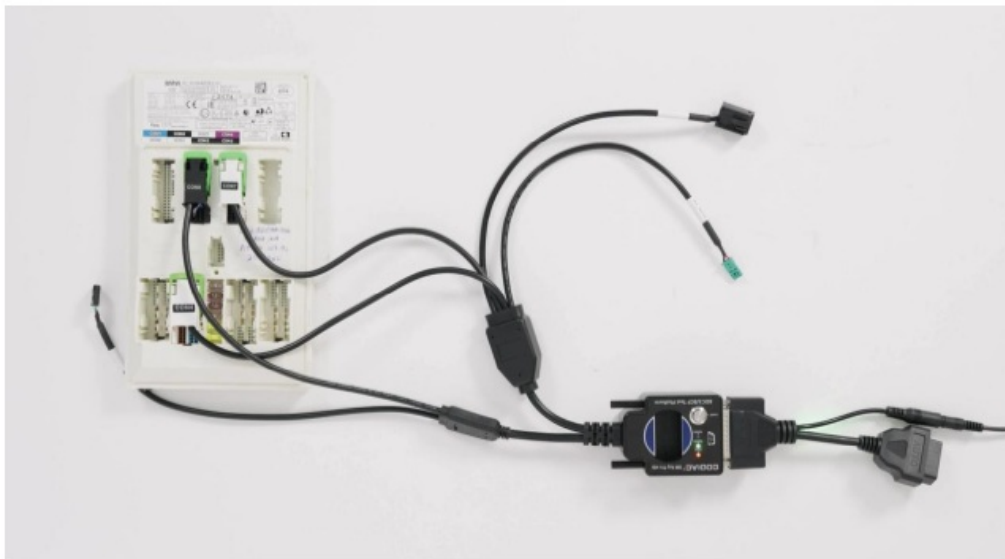
8. It supports CAN BUS module communication and can perform diagnostics and programming on the BDC3 module.
9. Use Autel IM608 device and Autel BDC3 key with Autel BDC3 key addition authorization to add keys to the BDC3 module.
10. Connect to BMW dedicated diagnostic equipment icom, or GT109 for ENET communication.
11. Connect to Autel, Launch tablets that supports BMW diagnostics for diagnostics, programming, and other functions.
12. Key intelligent recognition test, check whether the intelligent synchronization function of the BDC3 module is normal.

Product Usage Instructions

Steps to Detect Whether the Key and the Module are Synchronized.

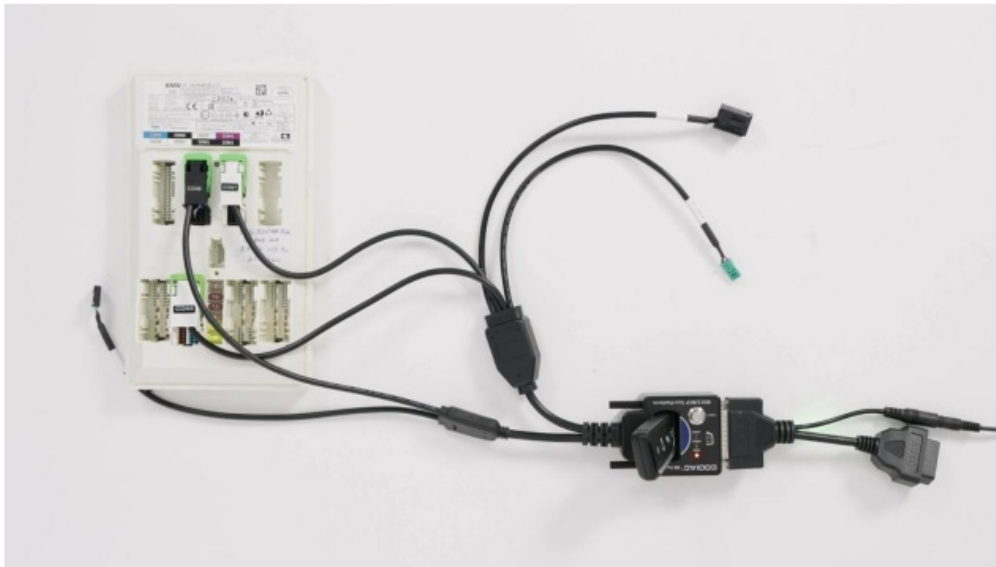
1. **Step 1:** Connect GODIAG For BMW BDC3/BCP Programming Test Platform to the BDC3 module. Then connect the 12v power supply as shown in the figure.

•



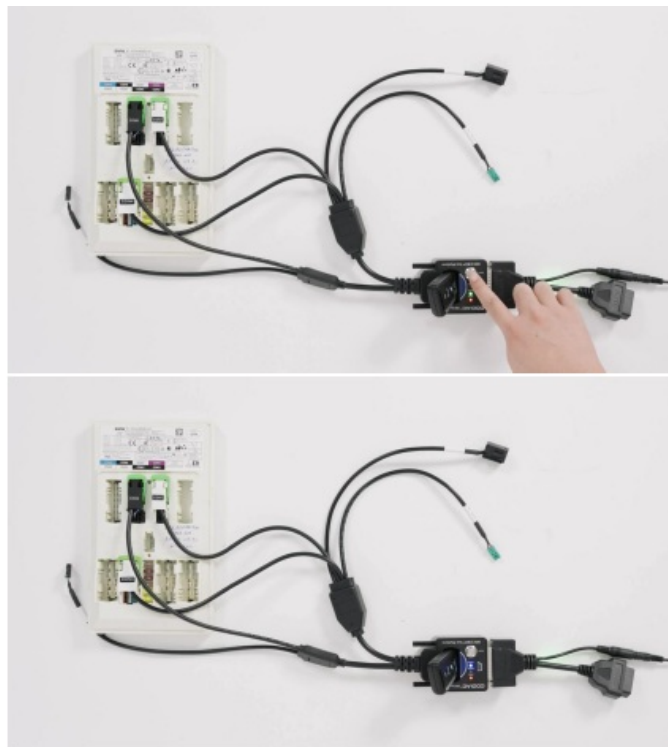
You will find both the red and green indicator lights are on.

2. **Step 2:** Place the key in the sensing area. If the key is recognized, the signal light will go out or stay on. After putting the key in, if the green light does not respond, please adjust the position a few more times.



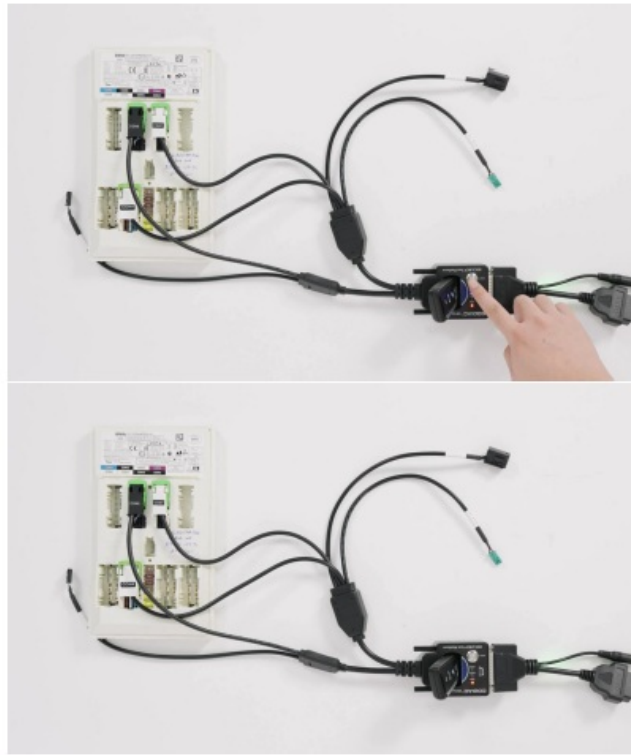
- After putting the key in, the green light goes out immediately, indicating that the key and the BDC3 module are synchronized.

3. **Step 3:** Press the START button three times in succession. Please note that the interval is about 0.1S.



- You will find that the blue IMMO light of the device lights up, which is equivalent to simulating the ignition switch.

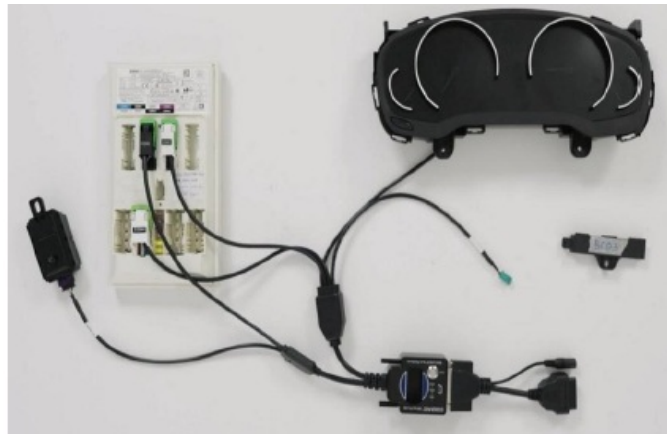
4. **Step 4:** Press the START button two times in succession. Please note that the interval is about 0.1S. Alternatively, you can also press and hold the START button to turn off the blue IMMO light. This is equivalent to turning off the ignition switch.



Steps to Detect Whether the Key and the Module are Synchronized with More Modules.

Two ways to test Whether the Remote Key is Responding

1. **Step 1:** Connect GODIAG For BMW BDC3/BCP Programming Test Platform to the BDC3 module, dashboard and remote control receiving module as shown in the figure.



2. **Step 2:** Then connect the 12v power supply.



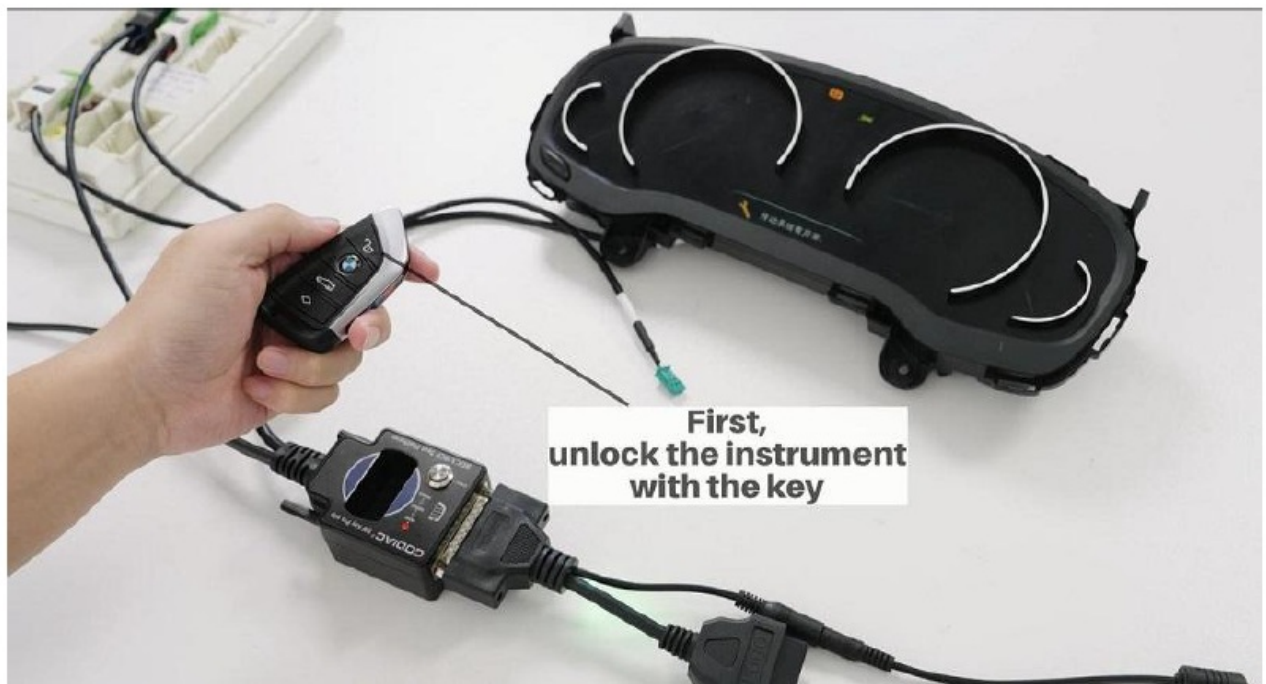
Two ways to test whether the remote key responds



3. **Step 3:** After pressing the unlock button on the key, the remote control receiving module makes a clicking sound and the green light on the dashboard lights up. Either of these two methods can test whether the remote control key responds.

Test Whether the Key and the Module are Synchronized.

1. **Step 1:** First, unlock the dashboard with the key by pressing the unlock button.



2. **Step 2:** Press the START button once, the green light will come on, and if the key cannot be found within 10 seconds, it will automatically go out.

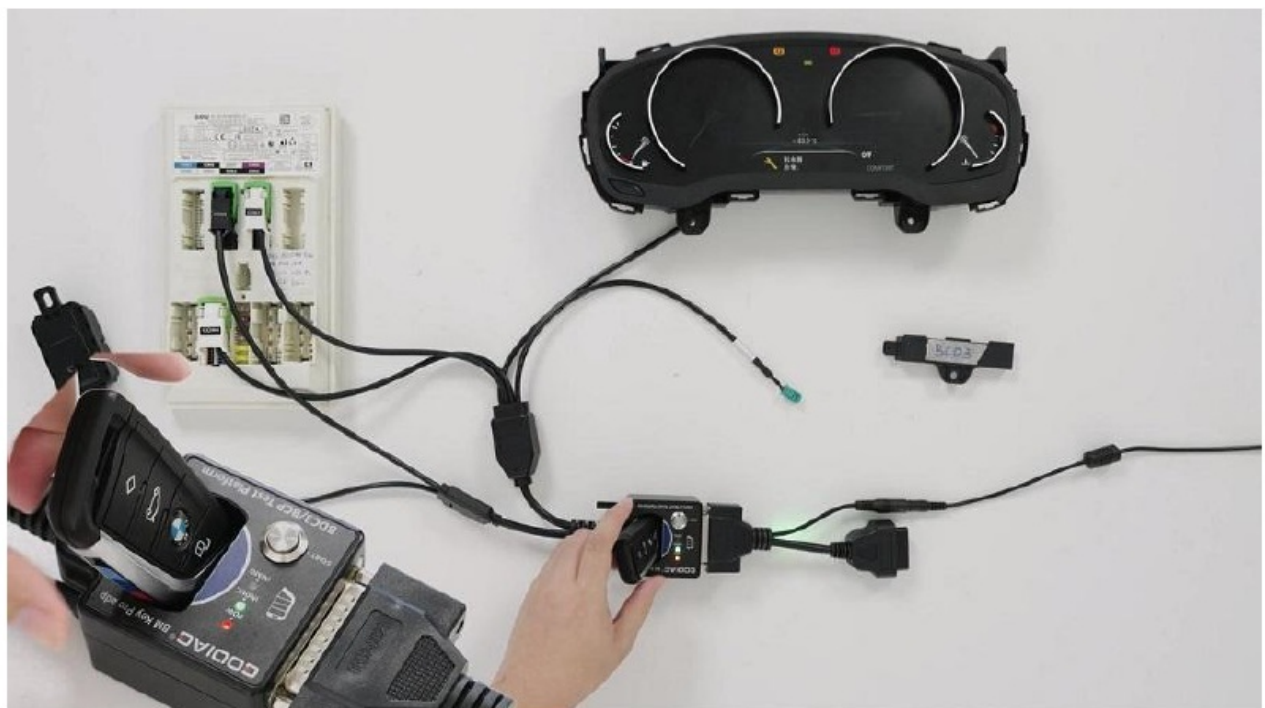




Note: When you press the START button, the green light turns on and searches for the key. If no key is found within 10 seconds, the green light will turn off automatically.

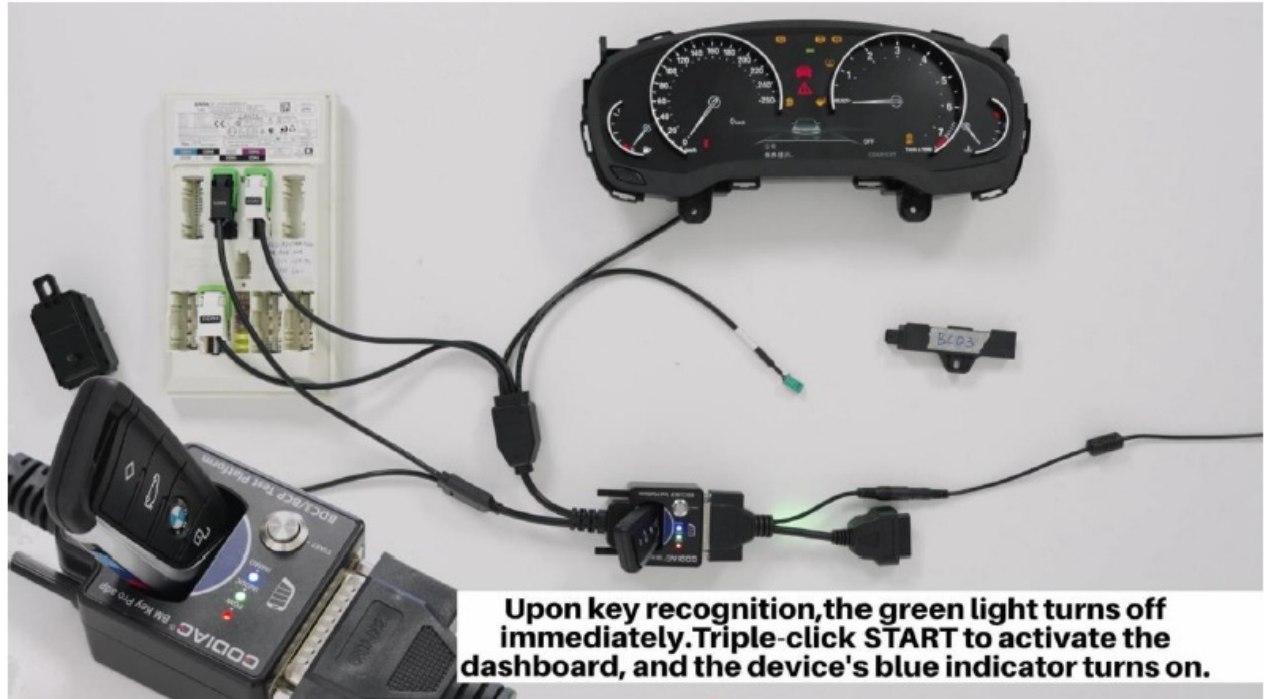
3. **Step 3:** Press the START button and put the key in the sensing area, the green light will go out immediately indicating that the key and the BDC3 module are synchronized.

Note: When placing the key in the sensing area. If the key is recognized, the signal light will go out or stay on. After putting the key in, if the green light does not respond, please adjust the position a few more times.



4. **Step 4:** Press the START button three times in succession. Please note that the interval is about 0.1S.

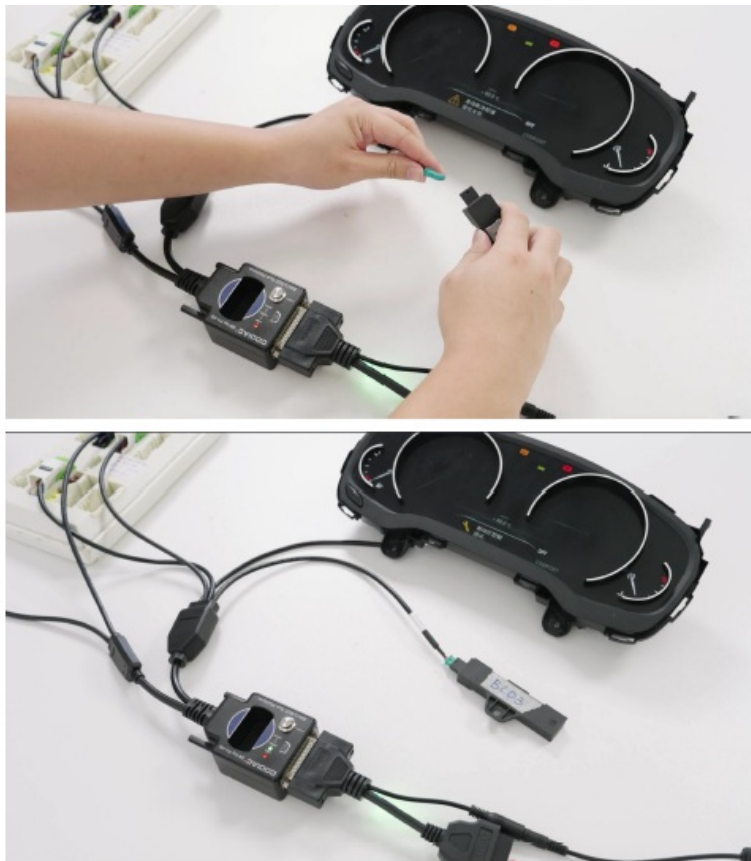
You will find that the blue IMMO light of the device lights up and the dashboard is also lit up.



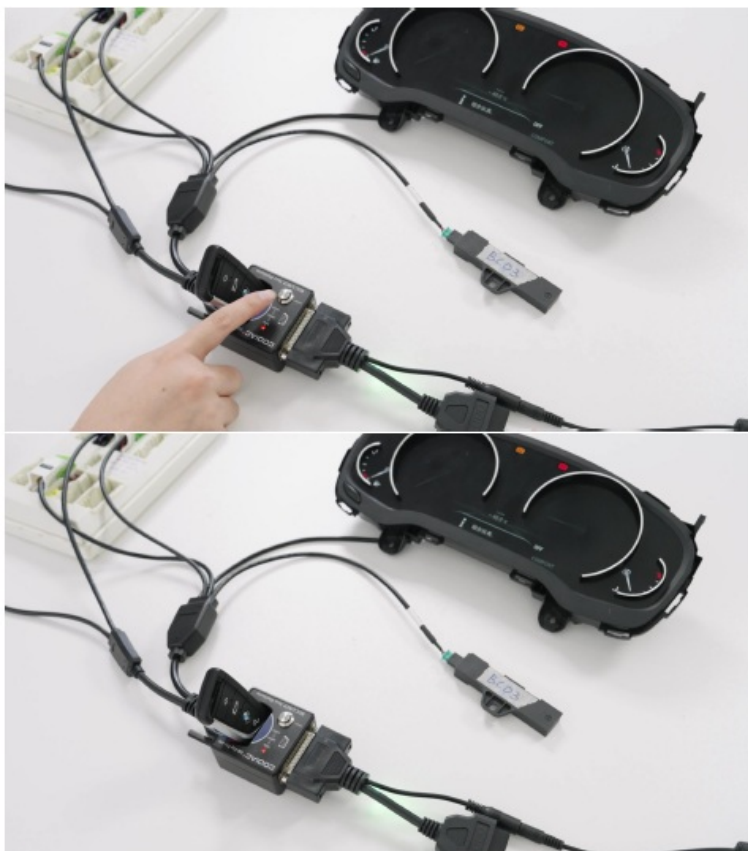
5. **Step 5:** Press the START button two times in succession. Please note that the interval is about 0.1S. Alternatively, you can also press and hold the START button to turn off the blue IMMO light and dashboard.

Intelligent Antenna Identification Function Demonstration

1. **Step 1:** Plugging in the smart identification antenna.



2. **Step 2:** Press the START button and put the key in the sensing area, the green light will go out immediately indicating that the key and the BDC3 module are synchronized.



3. **Step 3:** After we took away the key, the green light did not light up, which means that the key has been recognized.



4. **Step 4:** Press the START button three times in succession. Please note that the interval is about 0.1S. You will find that the blue IMMO light of the device lights up and the dashboard is also lit up.



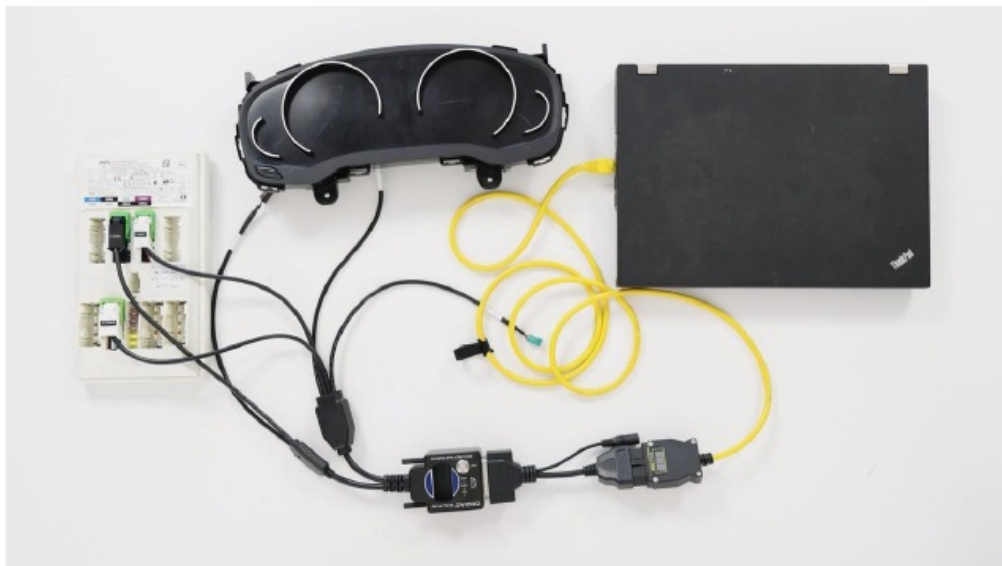
5. **Step 5:** Press the START button two times in succession. Please note that the interval is about 0.1S. Alternatively, you can also press and hold the START button to turn off the blue IMMO light and dashboard.



and the dashboard can be directly lit or turned off.

Steps to Use with GT109 and Diagnostic Software to Diagnose BMW BDC3 Module

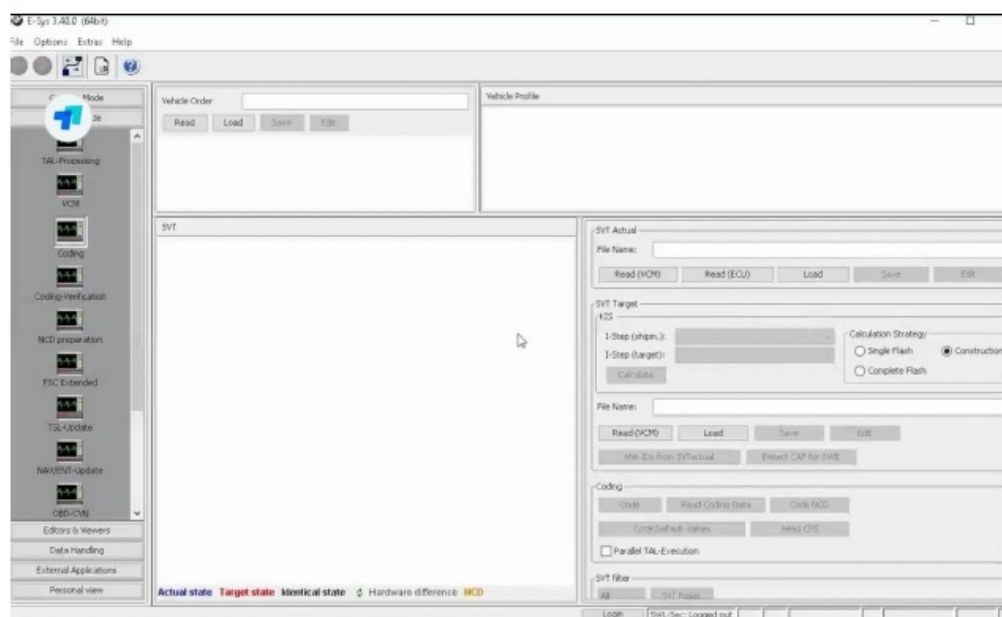
1. **Step 1:** Connect GODIAG BDC3/BCP Test Platform to the GT109, dashboard and BDC3 module and laptop as shown in the figure.

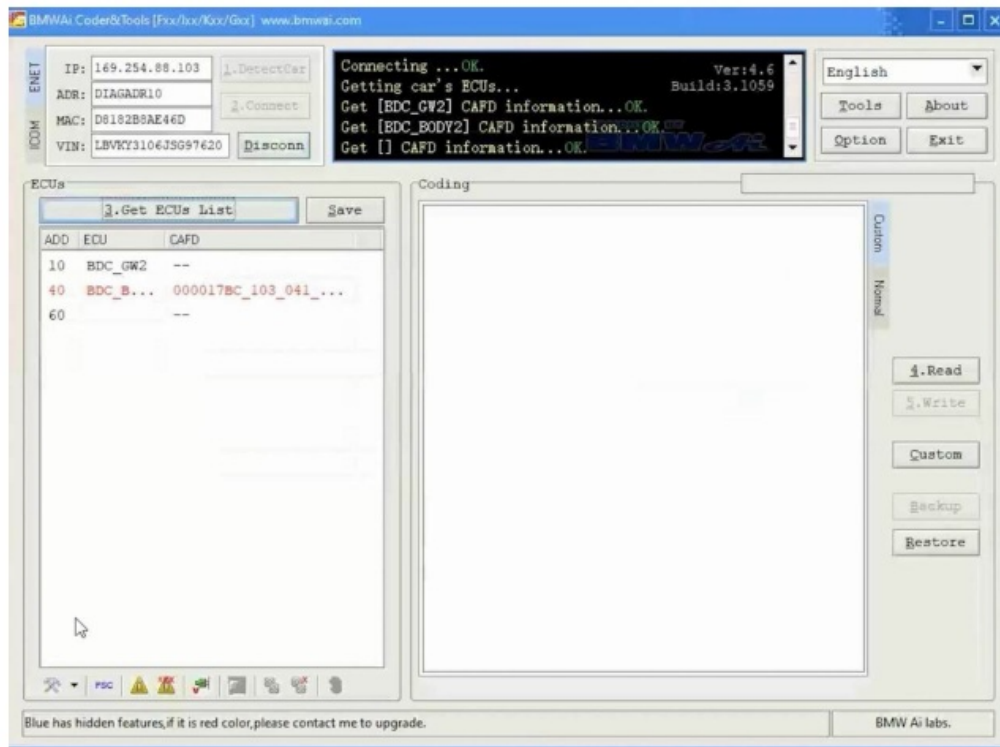


2. **Step 2:** Finally, connect the 12v power supply.



3. **Step 3:** Then you can use ISTA-D, E-sys, and BMW AiCoder on your computer to read the data.





4. Step 4: End Diagnosis.

NOTE:

The module is removed from the vehicle and programmed and coded independently. This avoids the risk of damaging other modules when operating on the vehicle.

Accessories

- 1pc x GODIAG For BMW BDC3/BCP Programming Test Platform
- 1pc x PDF manual

Shenzhen Sinoy Technology Co.,Ltd All Rights Reserved

- www.godiag.com
- +86 18813687743
- Sales@GoDiag.com



Thanks for reading!

FAQ


- **Q: What should I do if the green light does not respond when placing the key in the sensing area?**

A: If the green light does not respond, adjust the position of the key a few more times until synchronization is achieved.

- **Q: How do I know if the key and module are synchronized?**

A: The green light will go out immediately after placing the key in the sensing area, indicating synchronization between the key and BDC3 module.

Documents / Resources

	GODIAG 202506 Programming Test Platform [pdf] User Manual 202506, 202506 Programming Test Platform, 202506, Programming Test Platform, Test Platform
---	---

References

- [User Manual](#)

202506, 202506 Programming Test Platform, GODIAG, Programming Test Platform, Test

GODIAG Platform

Leave a comment

Your email address will not be published. Required fields are marked *

Comment *

Name

Email

Website

☐ Save my name, email, and website in this browser for the next time I comment.

Post Comment

Search:

e.g. whirlpool wrf535swhz

Search

[Manuals+](#) | [Upload](#) | [Deep Search](#) | [Privacy Policy](#) | [@manuals.plus](#) | [YouTube](#)

This website is an independent publication and is neither affiliated with nor endorsed by any of the trademark owners. The "Bluetooth®" word mark and logos are registered trademarks owned by Bluetooth SIG, Inc. The "Wi-Fi®" word mark and logos are registered trademarks owned by the Wi-Fi Alliance. Any use of these marks on this website does not imply any affiliation with or endorsement.