



Gocube GC33A-SP The Connected Electronic Bluetooth Cube User Guide

[Home](#) » [Gocube](#) » Gocube GC33A-SP The Connected Electronic Bluetooth Cube User Guide 

Contents

- [1 Gocube GC33A-SP The Connected Electronic Bluetooth Cube](#)
- [2 CAUTION – ELECTRICALLY](#)
- [3 FCC](#)
- [4 IC Compliance](#)
- [5 WARRANTY](#)
- [6 BATTERY INFORMATION](#)
- [7 HOW TO INSERT THE COIN CELL BATTERY](#)
- [8 SUPPORT](#)
- [9 Documents / Resources](#)
 - [9.1 References](#)
- [10 Related Posts](#)



Gocube GC33A-SP The Connected Electronic Bluetooth Cube



This Important Product Information Guide contains safety, handling, disposal, recycling, and regulatory information as well as the limited warranty for GoCubeX. Read all safety information and operating instructions before using GoCubeX to avoid injury or harm. By using GoCubeX you agree to the terms and policies found at GetGoCube.com/terms including the Particula Privacy Policy.

CAUTION – ELECTRICALLY

- **OPERATED PRODUCT:** As with all electric products, precautions should be observed during handling and use to prevent electric shock.
- **WARNING:** GoGubeX contain small parts, which can present a choking hazard to small children. Keep such parts away from small children.
- **WARNING:** This product is eye-safe under all operating conditions. for use under all reasonably anticipated conditions of use.
- **WARNING:** Changes or modifications to this unit not expressly approved by the party responsible for compliance could void the user's authority to operate the equipment.

FCC

FCC Compliance: FCC ID: 2AWLXRBE001CC

This device complies with part 15 of the FCC Rules. Operation is subject to the following two conditions:

1. this device may not cause harmful interference, and
2. this device must accept any interference received, including interference that may cause undesired operation.

NOTE: This equipment has been tested and found to comply with the limits for a Class B digital device, pursuant to part 15 of the FCC Rules. These limits are designed to provide reasonable protection against harmful interference in a residential installation. This equipment generates, uses and can radiate radio frequency energy and, if not installed and used in accordance with the instructions, may cause harmful interference to radio communications. However, there is no guarantee that interference will not occur in a particular installation. If this equipment does cause harmful interference to radio or television reception, which can be encouradetermined by

turning the equipment off and on, the user is asked to try to connect the interference by one or more of the following measures:

- Reorient or relocate the receiving antenna.
- Increase the separation between the equipment and receiver.
- Connect the equipment into an outlet on a circuit different from that to which the receiver is connected.
- Consult the dealer or an experienced radio/TV technician for help.

a) frequency band(s) in which the radio equipment operates: 2402-2480MHz.

b) maximum radio-frequency power transmitted in the frequency band(s) in which the radio equipment operates: <10 dBm.

IC Compliance

IC: 26194-RBE001CC

This device contains

licence-exempt transmitter(s)/receiver(s) that comply with Innovation, Science and Economic Development Canada's

licence-exempt RSS(s).

Operation is subject to the following two conditions

1. This device may not cause interference
 - (2) This device must accept any interference, including interference that may cause undesired operation of the device

Declaration of Conformity

Hereby, Particula Ltd declares that the radio equipment type RBE001-X, is in compliance with Directive 2014/53/EU.

The full text of the EU declaration of conformity is available at the following internet address:

<https://getgocube.com/compliance>

EUROPEAN UNION –DISPOSAL INFORMATION

The symbol above means that according to local laws and regulations your product should be disposed of separately from household waste. When this product reaches its end of life, take it to a collection point designated by local authorities. Some collection points accept products for free. The separate collection and recycling of your product at the time of disposal will help conserve natural resources and ensure that it is recycled in a manner that protects human health and the environment. Keep these instructions for future reference as they contain important information.

ENVIRONMENT

Operating temperature: 0°C to 40°C (32°F to 104°F) Relative humidity: 5% to 95% non-condensing. Using GoCubeX in very cold or high conditions might temporarily shorten battery life and could cause GoCubeX to temporarily stop working. GoCubeX to high temperature conditions such as direct sunlight or hot car interiors. Don't leave GoCubeX in your car, as direct sunlight or hot car interiors. Don't leave GoCubeX in your car, because temperatures in parked cars can exceed this range. For best results, use indoors. Never expose GoCubeX to water.

WARRANTY

Your purchase comes with a one-year limited warranty to Original Purchaser. The warranty covers against manufacturing defects. It does not cover abuse, alteration, theft, loss, unauthorized and/or unreasonable use, or normal "wear and tear." During the warranty period, Particula will make sole determination of a defect. If Particula determines a defect, Particula, at its sole discretion, will repair or replace the defective part or product with a comparable part. This does not affect your statutory rights. For full details, safety updates, or support, see GetGoCube.com/warranty

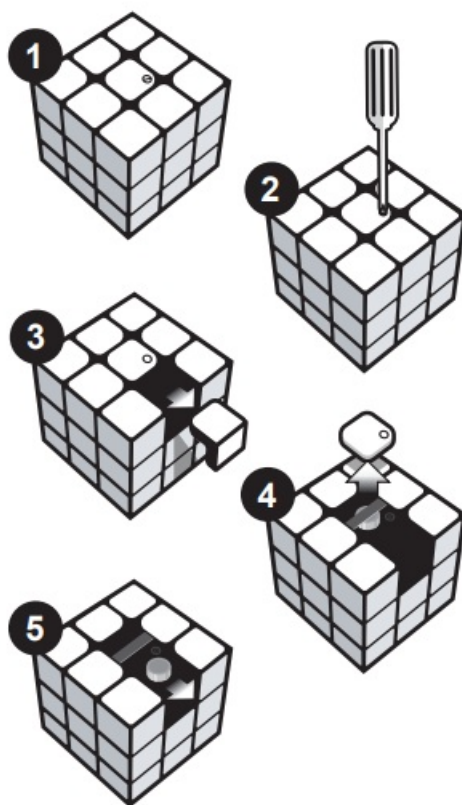
BATTERY INFORMATION

Follow these principles when replacing batteries:

Use only the correct type and size battery indicated. Check the contacts of both the battery and the battery-operated product for cleanliness. Always insert the batteries correctly with regard to polarity (-/+), matching the positive and negative symbols of both battery and product. Remove and safely dispose of exhausted batteries immediately. Keep batteries out of reach of small children.

HOW TO INSERT THE COIN CELL BATTERY

To replace the battery the screw hole must always be on the bottom right corner.



2021 Particula L LC All rights reserved.

GoCubeX, GoDice, GoCube, Particula, the GoCubeX Gocube GoDice and Particula logos are registered or pending trademarks of Particula L LC. NY 11367, USA Item number RBE001-X Engineered by Particula, Made in China.

SUPPORT

GetGoCube.com/support

Keep these instructions for future reference as they contain important information. For warranty details and updates to regulatory information, visit GetGoCube.com

Documents / Resources



[Gocube GC33A-SP The Connected Electronic Bluetooth Cube](#) [pdf] User Guide
GC33A-SP, The Connected Electronic Bluetooth Cube

References

- [👉 Get the Best Smart Connected Cube | GoCube](#)
- [👉 GoCube](#)
- [👉 Returns & Warranty - GoCube](#)
- [👉 Compliance - GoCube](#)