



GoboSource F-Series Line Projectors User Guide

[Home](#) » [GoboSource](#) » GoboSource F-Series Line Projectors User Guide 

Contents

- [1 GoboSource F-Series Line Projectors](#)
- [2 Description](#)
- [3 Specifications](#)
- [4 Color mode configuration](#)
- [5 Controller logic flowchart](#)
- [6 Frequently Asked Questions](#)
- [7 Documents / Resources](#)
 - [7.1 References](#)



GoboSource F-Series Line Projectors



This is a supplemental user manual for F-Series Line Projectors that have color switching. Line colors and sequences can be manually set and remain in memory, or they can automatically switch via switches or a 0-10V control signal.

Description

Each RGY line projector incorporates a control board for color-changing functions. The control board is configured with two buttons: M (mode) and S (speed). There are two inputs to the control board: switching and variable voltage. Both inputs are wired to the control panel, switch contact in the front, along with the M and S buttons, and variable 0- 10V contact in the rear.

WARNING

Applying voltage to the switch contact input will damage the control module. Only the 0-10VDC input is configured for variable voltage.

Specifications

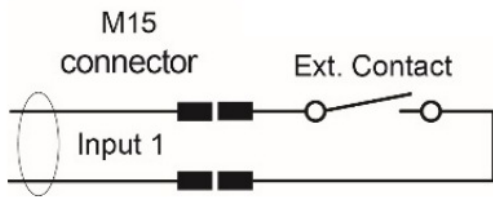
- Model: ECO Lines F80/F150 RGY
- Color: Red, Green, Yellow
- Control: Manual and 0-10V control signal
- Inputs: Switching and variable voltage
- Buttons: M (mode) and S (speed)

Color mode configuration

Switch voltage is designed to be configured with a switch such as a motion sensor and will alternate between

selected modes based on the switch state. Variable voltage enables the projector to change between color presets based on the input voltage.

Switch voltage



Variable voltage



Input 1 – Switch Voltage

- Mode 1: open contact
- Mode 2: closed contact (dead short)
- Cycle mode 1 color: single press M button
- Cycle mode 2 color: single press the M button while holding the S button

Start: Off

1. Green
2. Red
3. Yellow
4. Green Flashing
5. Red Flashing
6. Yellow Flashing
7. Red/Green

Alternating

8. Green/Yellow

Alternating

9. Red/Yellow

Alternating

Order repeats

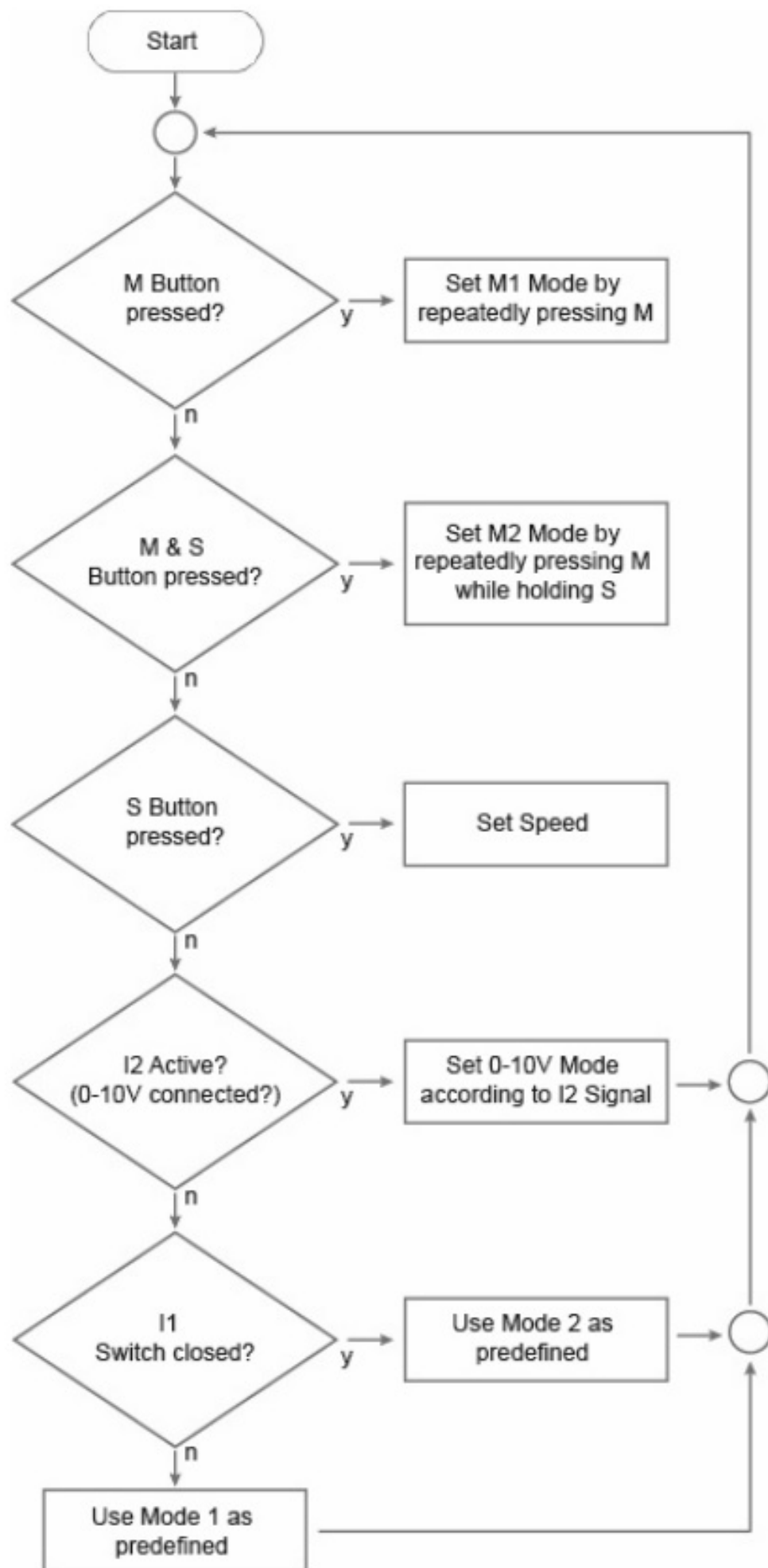
Input 2 – Variable voltage

- Off: 0-1V
- Green: 1-2V
- Red: 2-3V
- Yellow: 3-4V
- Green Flashing: 4-5V
- Red Flashing: 5-6V
- Yellow Flashing: 6-7V
- Red/Green Alternating: 7-8V
- Green/Yellow Alternating: 8-9V

- Red/Yellow Alternating: 9-10V

See the following flowchart for additional details on the controller.

Controller logic flowchart



Switch Voltage

This mode alternates between selected colors based on the switch state. Connect a switch like a motion sensor to control the color change.

Variable Voltage

By applying variable voltage in the range specified, the projector will change between different color presets. Follow the voltage ranges for each color preset.

Setting Color Sequences

Use the M (mode) and S (speed) buttons to manually set and store color sequences in memory. Press M to change the mode and S to adjust the speed.

Avoiding Damage

Ensure that only the 0-10VDC input is used for variable voltage to prevent damaging the control module.

Frequently Asked Questions

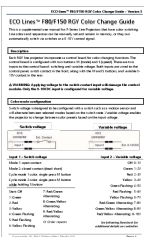
Q: Can I use any switch for the switch voltage input?

A: It is recommended to use a switch like a motion sensor that is compatible with the device to avoid any damage.

Q: How do I reset the color sequences?

A: To reset the color sequences, press and hold both M and S buttons simultaneously for 5 seconds.

Documents / Resources



GoboSource F-Series Line Projectors [pdf] User Guide
F-Series, F-Series Line Projectors, Line Projectors, Projectors

References

- [User Manual](#)

[Manuals+.](#) [Privacy Policy](#)

This website is an independent publication and is neither affiliated with nor endorsed by any of the trademark owners. The "Bluetooth®" word mark and logos are registered trademarks owned by Bluetooth SIG, Inc. The "Wi-Fi®" word mark and logos are registered trademarks owned by the Wi-Fi Alliance. Any use of these marks on this website does not imply any affiliation with or endorsement.