



EL-F150 Virtual Line LED Projector



GoboSource EL-F150 Virtual Line LED Projector User Manual

[Home](#) » [GoboSource](#) » GoboSource EL-F150 Virtual Line LED Projector User Manual 

Contents

- [1 GoboSource EL-F150 Virtual Line LED Projector](#)
- [2 Product Information](#)
- [3 Product Usage Instructions](#)
- [4 FAQ](#)
- [5 Product Information](#)
- [6 Package Contents](#)
- [7 Line Length and Projection Lenses](#)
- [8 Line Limiter Option](#)
- [9 Mounting](#)
- [10 Focusing](#)
- [11 Adjustment](#)
- [12 Maintenance and Cleaning](#)
- [13 Warranty](#)
- [14 Documents / Resources](#)
 - [14.1 References](#)



GoboSource EL-F150 Virtual Line LED Projector



Product Information

Specifications:

- Product: ECO Lines™ Virtual Line LED Projector
- Models: F80, F150
- Package Contents: Projector with projection lens, mounting yokes, power cord, two (2) line limiters, and mounting pivot
- Line Colors: Yellow, Green, Red, Blue, Amber White (pre-configured LED array)
- Projection Distance: 26ft. (8m)

Product Usage Instructions

Line Length and Projection Lenses:

The projection lenses come pre-installed but can be interchanged to optimize line length and brightness based on the mounting height of the projector.

Line Limiter Option:

To adjust the projected line length, optional line limiters can be used. Mount these flaps on one or both sides of the projector and adjust the line length by bending the limiters in or out.

Mounting:

Secure the projector with a safety cable in case of fastening mechanism failure. Use the provided yokes for mounting and alignment. Ensure the fixture is perpendicular and centered above the projected line.

Focusing:

The projectors come pre-focused to a standard distance of 26ft. (8m). Adjust focus during installation or maintenance as needed for optimal performance.

FAQ

- **Q: Can the LED array colors be changed?**

- A: No, the LED array colors are pre-configured and cannot be changed without replacing the entire array.

- **Q: How do I adjust the line length using the line limiters?**

- A: Mount the line limiters on one or both sides of the projector and bend them in or out to shorten or extend the projected line as desired.

- **Q: What is the recommended mounting procedure for the projectors?**

- A: Secure the projector with a safety cable, use the provided yokes for mounting, ensure perpendicular alignment above the projected line, and adjust as needed using the pivot for optimal positioning.

Product Information

Thank you for choosing an ECO Lines™ Virtual Line LED Projector. ECO Lines projectors are designed to project a highly visible virtual line in industrial environments, thus eliminating the need for painted or taped lines. These F-Series models are focusable for optimal line appearance and brightness.

ECO Lines F150



ECO Lines F80



Package Contents

Projector with projection lens, mounting yokes, power cord, two (2) line limiters and mounting pivot.

Compliance

⚠ Projectors must be secured with a safety cable in the event the fastening mechanism fails.

The installer and/or operator of ECO Lines projection systems is responsible for compliance with local and national codes, regulations, requirements, and laws.

Line Colors

The projectors come pre-configured with a color LED array. The colors cannot be changed without replacing the LED array. Standard colors: Yellow, Green, Red, Blue, Amber White

Line Length and Projection Lenses

The projected line length depends on the projection distance and the lens angle.

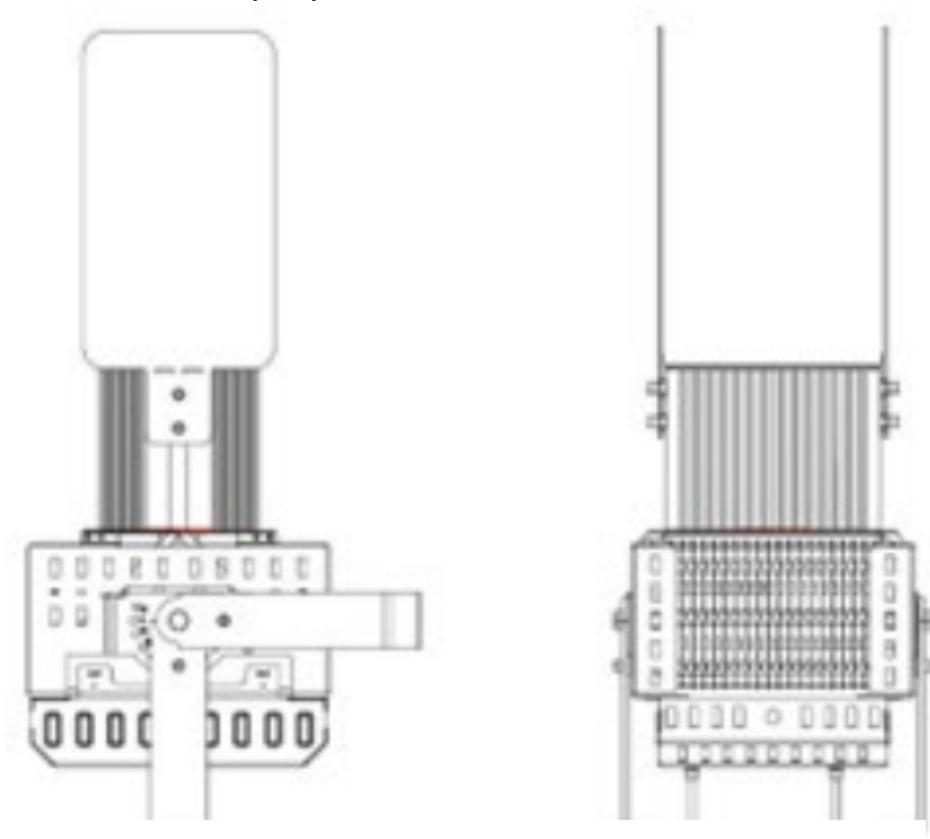
- The shorter the line, the brighter it will project.
- The larger the projection distance, the longer the line.
- The wider the lens angle, the longer the line.

The projectors come with pre-installed projection lenses. Lenses can be interchanged to optimize the line length and brightness in relation to the projector mounting height.

Line Limiter Option

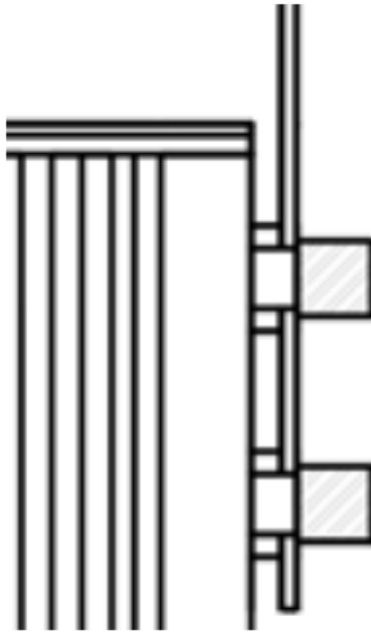
In certain circumstances, it may be necessary to shorten the projected line on one or both sides to achieve the desired line length. Therefore, the projectors can be equipped with optional line length limiters. These are “flaps”, that can be mounted on one or both sides of the projector. The line length is adjusted by bending the limiters in or out. Line Limiters also help to achieve a more refined line end.

Note: The minimum achievable line length is approx. 30% of the max. line length. For example, a 30ft line can be limited to approx. 10ft. These values may vary.



Line Limiters, mounted to the EL-F150

The line limiters are attached to the sides of the projector with the provided hardware. The front two holes on each side are spaced to accommodate fasteners for the limiters. Once the limiters are installed on the desired side(s) of the projector, they can be bent inwards or outwards, along the slotted perforation, to shorten or extend the line, respectively.

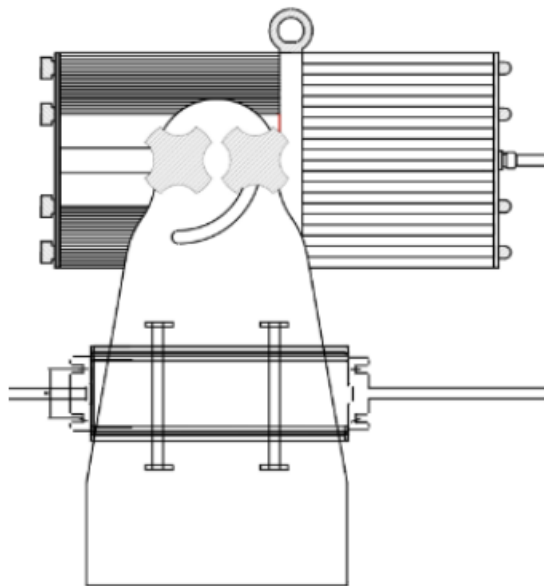


Mounting

⚠ Projectors must be secured with a safety cable in the event the fastening mechanism fails.

The projectors come equipped with yokes for mounting and alignment. Ideally, the fixtures should be mounted perpendicular and centered above the projected line. Since this is rarely the case, the fixture is equipped with a yoke and pivot to position the projected line.

The EL-F150 comes without the yoke attached. Attach it to the projector by using the provided mounting hardware. The EL-F80 has an external driver. It can be attached to the mounting structure or to the yoke, through the designated slots with zip ties or metal bands



Pivot

The yoke allows for alignment in two dimensions. To cover all possible angles, the projector comes with a pivot. It is especially handy if the projected line needs to be adjusted sideways.



Focusing

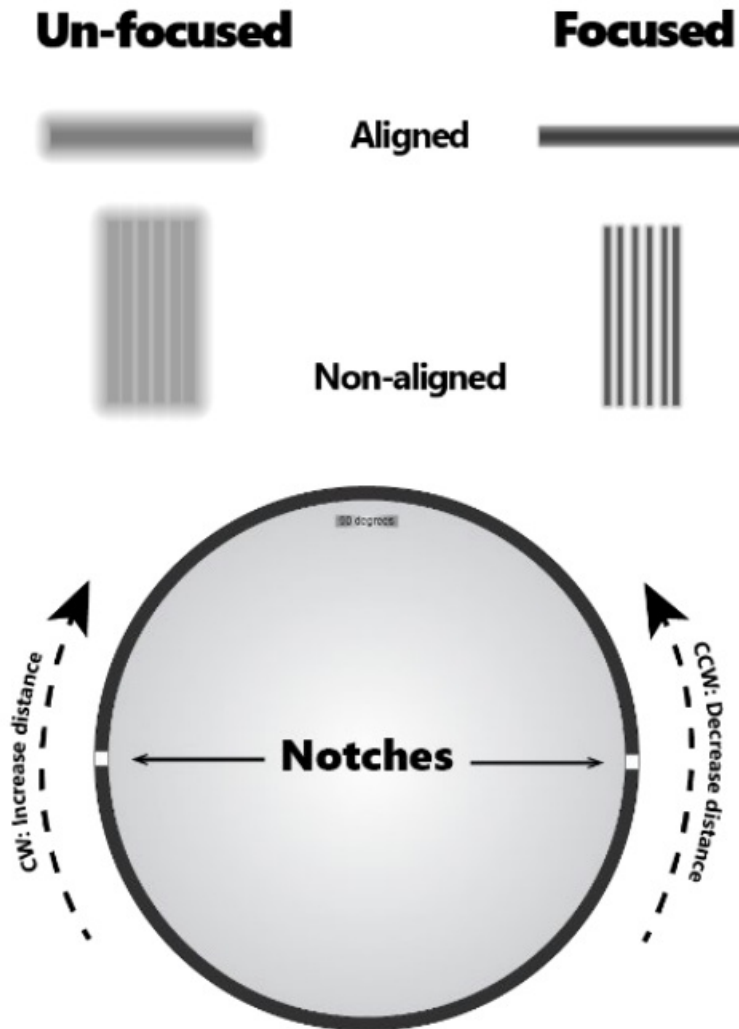
EL-F80 and EL-F150 projectors come pre-focused to a standard projection distance of 26ft. (8m). The focus can easily be adjusted during installation and field maintenance. For distances that deviate more than 5ft. (1.5m) from the pre-set distance, we recommend focusing it for a crisper line appearance. The lens barrel assembly is secured in place with a collar, with thumbscrews facing outwards. Adjusting the focus distance of the projector requires no tools.

Adjustment

The projected line will be in focus every half rotation. It is expected that the focal length will increase or decrease by 4ft. (1.2m) with every half rotation. For example, a change in projection distance from the pre-set distance of 26ft. to 34ft. will require a full clockwise rotation (two half rotations).

To adjust the projection distance of the lens assembly:

- To increase the distance: turn the lens barrel clockwise (in)
- To decrease the distance: turn the barrel counterclockwise (out)



To release the lens barrel for adjustment, loosen the four (4) black thumbscrews. Once the front collar is no longer firmly fastened to the enclosure, the lens barrel will be free to rotate. Turning the barrel counterclockwise, facing the front of the lens, will move the barrel outward. Once the projected line has been properly focused, re-tighten the thumbscrews to secure the front collar which locks and seals the lens barrel and prevents moisture intrusion.

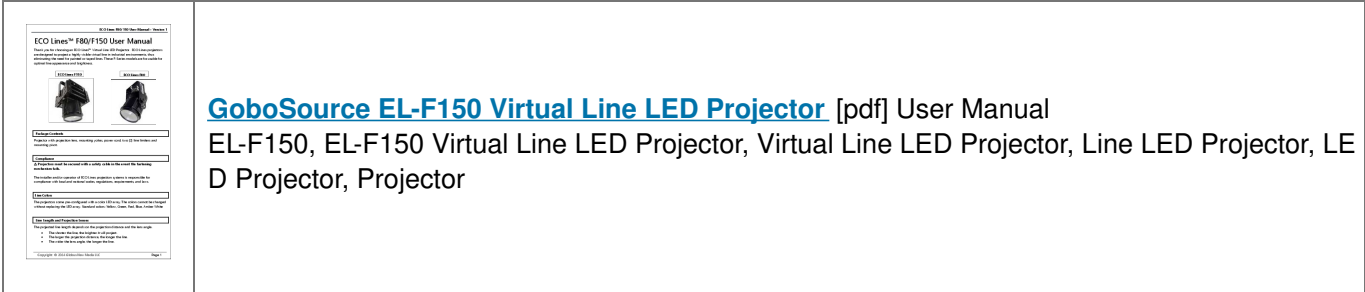
Maintenance and Cleaning

In general, the projectors are maintenance-free. In dusty environments, they can be dusted off with compressed air. Do not try to clean the lens with any chemicals or paper towels as they can scratch it. Instead, use compressed air from a spray can. If you need to wipe the lens, use a soft microfiber cloth.

Warranty

Two years from Date of Purchase. Keep your receipt for reference and contact your reseller in case of warranty issues. For further technical information, please refer to the ECO Lines Spec Sheets.

Documents / Resources



- User Manual

- User Manual

[Manuals+](#), [Privacy Policy](#)

This website is an independent publication and is neither affiliated with nor endorsed by any of the trademark owners. The "Bluetooth®" word mark and logos are registered trademarks owned by Bluetooth SIG, Inc. The "Wi-Fi®" word mark and logos are registered trademarks owned by the Wi-Fi Alliance. Any use of these marks on this website does not imply any affiliation with or endorsement.