



GO-TCHA Pokemon Go Generation App User Guide

[Home](#) » [GO-TCHA](#) » GO-TCHA Pokemon Go Generation App User Guide 



Contents

- [1 Pokemon Go Generation App](#)
- [2 Connecting Your Go-tcha](#)
- [3 Charging Your Go-tcha Generation](#)
- [4 Go-tcha Generation Screens](#)
- [5 Documents / Resources](#)
 - [5.1 References](#)
- [6 Related Posts](#)

Pokemon Go Generation App

Thank you for purchasing the Go-tcha Generation for Pokémon Go!
Enjoy Pokémon GO on the move without looking at your smartphone!

What's In The Box?

In your Go-tcha Generation for Pokémon Go box you should receive:

- x1 Go-tcha Generation device complete with wristband
Note: The wristband is not interchangeable – do not attempt to remove or damage may result.
- x1 Magnetic USB charging cable

Connecting Your Go-tcha

To connect your Go-tcha Generation to the Pokémon Go App:

- Open the Pokémon Go App
- Select Main Menu
- Select Settings
- Select 'Pokémon GO Plus'
- Press the button on the Go-tcha Generation to make it discoverable to the Pokémon Go App
- Select your 'Pokémon GO Plus' under the 'Available Devices' list to connect.

Using Your Go-tcha Generation – Manual Catch

- Go-tcha Generation will vibrate and animate the screen to show a new/duplicate Pokémon is near
- Press the Go-tcha Generation button/screen to catch the Pokémon
- Go-tcha Generation will vibrate and animate the screen to show a successful/unsuccessful catch
- Go-tcha Generation will vibrate and animate the screen to show when a Pokéstop is in range
- Press the Go-tcha Generation button to retrieve items from a Pokéstop
- Go-tcha Generation will vibrate and animate the screen to show it has successfully/unsuccessfully collected the items and how many items it has collected

See 'Go-tcha Generation Screens' on pages for a complete guide to the screen animation alerts.

Using Your Go-tcha Generation- Auto Catch

To turn the 'Auto-catch' function on, press the Go-tcha Generation button until 'Auto-catch ON' is selected.
If you have Auto Catch on:

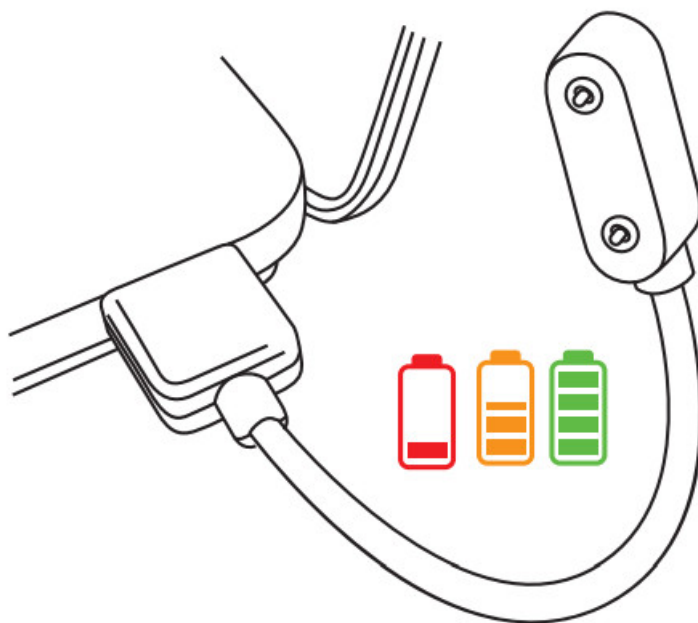
- Go-tcha Generation will vibrate and animate the screen to show a successful/unsuccessful catch
- Go-tcha Generation will vibrate and animate the screen to show it has successfully/unsuccessfully collected the items and how many items it has collected at a Pokéstop

To turn 'Auto-catch' off, press and hold the Go-tcha button until 'Auto-catch OFF' is selected.

Charging Your Go-tcha Generation

The Go-tcha Generation charges via a magnetic USB cable. Simply attach the magnetic cable to the charging port on the back of the Generation watch and connect the other end to a USB power source. The cable will only connect one way around – you will feel the magnets indicating the correct orientation as you position the connector.

Duration of battery life depends on intensity of game-play.

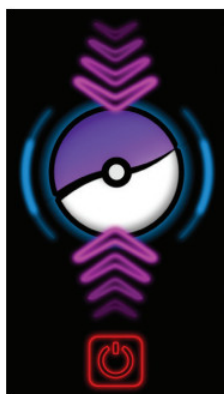


Once connected you can check that your Go-tcha is charging by pressing the screen button. The charging animation will appear to confirm that the Go-tcha is charging. If there is another Go-tcha animation running, then wait for the animation to stop and the screen is blank – now press the screen button to confirm the charging animation is displayed.

Go-tcha Generation Screens



Auto-catch
ON



Auto-catch
OFF



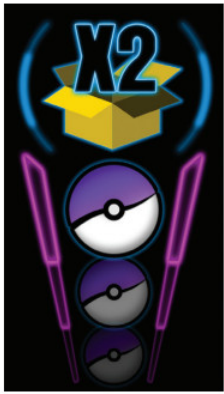
Auto-catch
new Pokémon
ON



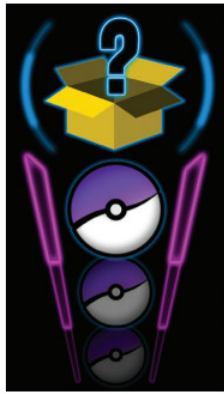
Auto-catch
new Pokémon
OFF



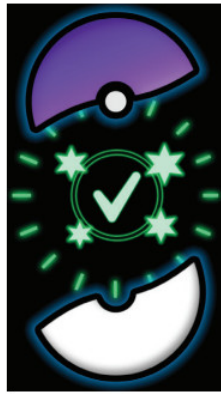
Mystery
Item



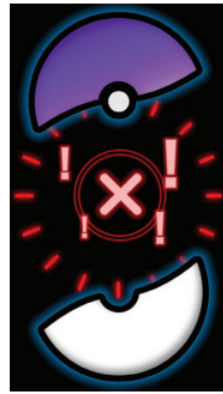
Catching Known
Pokémon



Catching
Unknown
Pokémon



Pokémon
Caught



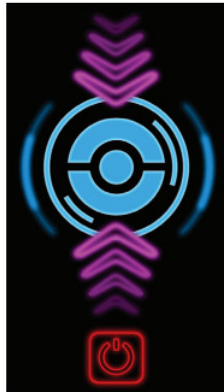
Pokémon Not
Caught



Caught Unknown
Pokémon



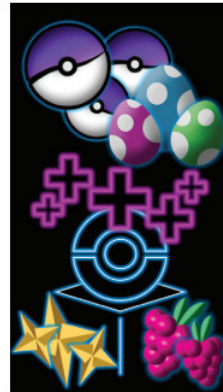
Auto-collect
Pokéstop **ON**



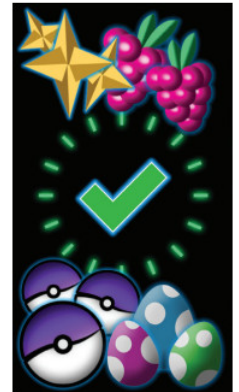
Auto-collect
Pokéstop **OFF**



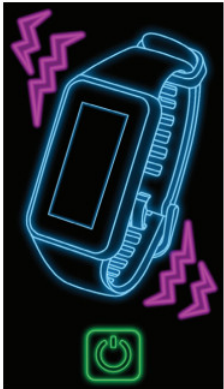
Pokéstop
In Range



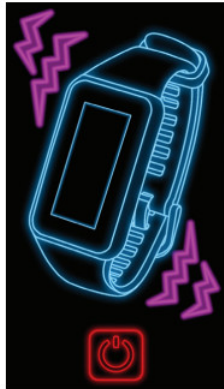
Pokéstop
Success
Multiple Items



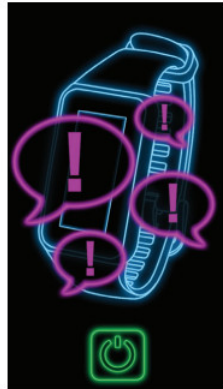
Pokéstop Item
Success



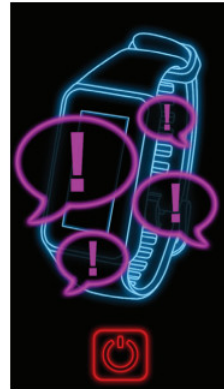
Vibration
ON



Vibration
OFF



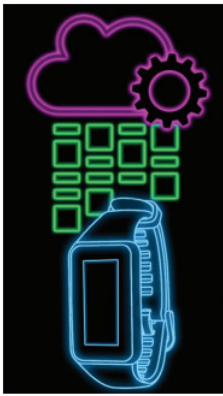
Notifications
ON



Notifications
OFF



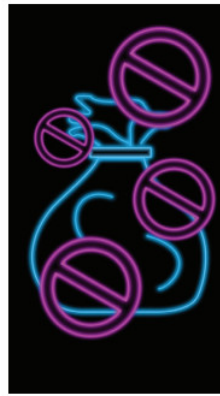
Pedometer



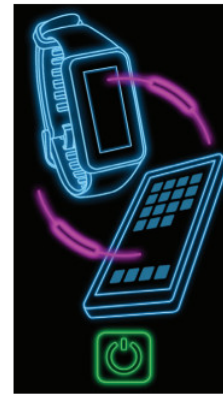
Update In Progress



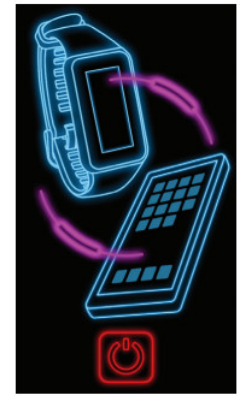
Out of Pokéballs



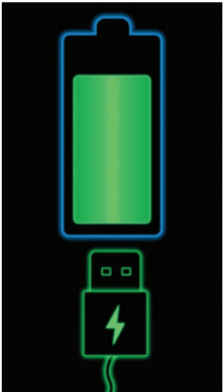
Bag Full



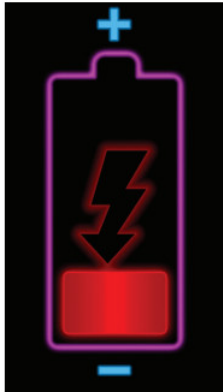
Device is paired



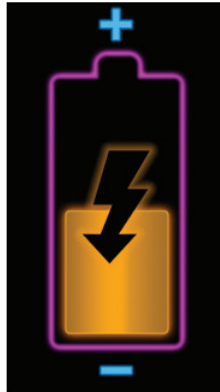
Device not paired



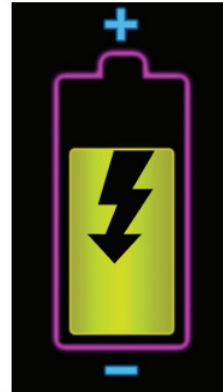
Device Is Charging



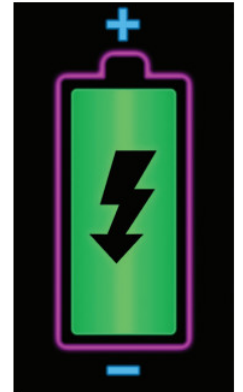
Battery Status



Battery Status



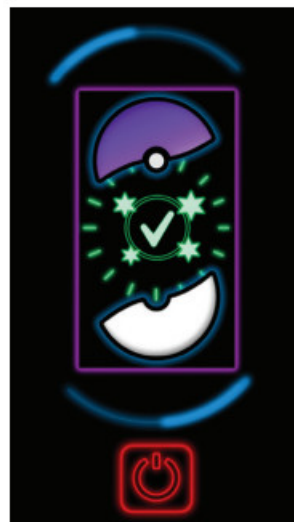
Battery Status



Battery Status



**Flip Screen
180°**



Normal Screen

Before You Start – Ensure that your Go-tcha Generation is running the latest firmware

Download the Go-tcha Generation App for even more features like checking your stats and changing your smartwatch settings to enhance the Go-tcha experience. Simply scan the QR code to take you to Go-tcha Generation on the Apple App Store page or the Go-tcha Generation Web App for Android Users.

 	 
https://apps.apple.com/gb/app/go-tcha-generation/id1624707437	https://www.go-tcha-generation.co.uk/webapp/

To connect your Go-tcha Generation to the Go-tcha Generation App, you must close the Pokémon Go App. Press the button on the Go-tcha Generation to wake the screen and it will connect automatically to the open Go-tcha Generation App. Updates will download automatically.

Note: The Go-tcha Generation cannot connect to more than one App at a time so the Pokémon Go App cannot be running in the background. If you tried to connect with the Pokémon Go App running, close both Apps and then open the Go-tcha Generation App again.



THIS PRODUCT IS NOT SPONSORED, ENDORSED, OR APPROVED BY THE POKÉMON COMPANY OR NIANTIC.

Device requires Bluetooth low-energy compatible smartphone with Pokémon GO app installed. Compatible with iPhones using iOS Ver.

12 onwards installed. Compatible with Android devices with 2 GB RAM or more, Bluetooth Smart (Bluetooth Ver. 4.0 or higher) capability, and Android Ver. 4.4–6.0 installed.

Technical Support

Before contacting Datel's customer service department, please ensure that you have read through and understood the information in this manual/guide.

If you contact support, please ensure that you have information on when and where you purchased this product to hand.

Datel Customer Services

Customers Services,
Datel Electronics Ltd,
Stafford Road,
Stone,
Staffordshire,
ST15 0DG.
UNITED KINGDOM


Web: <https://support.codejunkies.com>



© 2022 Datel Ltd. Go-tcha Generation is a trademark of Datel Ltd. Pokémon is a trademark or registered Trademark of the POKÉMON COMPANY. All other trademarks are the property of their respective owners. Go-tcha Generation for Pokémon Go is a 100% unofficial product and is NOT sponsored, endorsed or approved by

NINTENDO, nor any games developer or publisher.

Documents / Resources

 User Guide Thank you for purchasing the Go-TCHA Contributor to Pokémon Go! This manual contains information about the Go-TCHA and how to use it. Please read this manual carefully before using the Go-TCHA. What's in this book? This manual contains information about the Go-TCHA and how to use it. It includes information about the Go-TCHA's features, how to use it, and how to troubleshoot problems. Getting started with the Go-TCHA This section contains information about how to get started with the Go-TCHA. It includes information about how to charge the Go-TCHA, how to turn it on, and how to use the Go-TCHA's features. Using the Go-TCHA This section contains information about how to use the Go-TCHA's features. It includes information about how to use the Go-TCHA's camera, how to use the Go-TCHA's microphone, and how to use the Go-TCHA's speaker. Troubleshooting This section contains information about how to troubleshoot problems with the Go-TCHA. It includes information about how to reset the Go-TCHA, how to update the Go-TCHA's firmware, and how to contact technical support.	GO-TCHA Pokemon Go Generation App [pdf] User Guide Pokemon Go, Generation App, Pokemon Go Generation App, Pokemon Go App, App
---	--

References

-  [Codejunkies Support - support.codejunkies.com](https://support.codejunkies.com)

Manuals+.