



# GO RHINO BR6 FRONT BUMPER REPLACEMENT Instruction Manual

[Home](#) » [GO RHINO](#) » GO RHINO BR6 FRONT BUMPER REPLACEMENT Instruction Manual 

## Contents

- [1 GO RHINO BR6 FRONT BUMPER REPLACEMENT](#)
- [2 Product Information](#)
- [3 Product Usage Instructions](#)
- [4 INSTALLATION INSTRUCTIONS](#)
- [5 PRODUCT SAFETY & LEGAL DISCLAIMER](#)
- [6 MAINTENANCE AND CARE](#)
- [7 INSTALLATION INSTRUCTIONS](#)
- [8 LIMITED WARRANTY](#)
- [9 PRODUCT REGISTRATION](#)
- [10 Documents / Resources](#)
  - [10.1 References](#)
- [11 Related Posts](#)



## GO RHINO BR6 FRONT BUMPER REPLACEMENT



## Product Information

## Specifications

- **Product Name:** BR6 Front Bumper Replacement
- **Part Number:** 24179T
- **Application:** Chevrolet Silverado 1500 2/4 WD

## Product Safety & Legal Disclaimer

For more information on product safety and legal disclaimers, please visit [www.gorhino.com](http://www.gorhino.com).

## Maintenance and Care

To maintain the product's appearance, it is recommended to use a non-abrasive automotive wax such as pure carnauba wax.

## Compatibility

Some products have been designed to work together with factory rear sensor systems, factory forward facing sensor systems, and factory airbags. However, please note that the installation of aftermarket products may influence the functionality of these sensors. It is important to refer to the respective manufacturers' operating instructions for use with our products.

## Product Usage Instructions

### Installation Instructions

Before installing the product, it is recommended to read the installation instruction manual from front to back. Additionally, you can watch an installation video or visit <http://www.gorhino.com/Installation-Videos> for further guidance.

### Tools Needed for Installation:

- List of tools needed for installation.

### Estimated Time for Installation: 2 hours

If you require installation service, please contact the authorized distributor from whom you purchased the product or an authorized installation service company. You can find the contact information by calling toll-free 1-888-427-4466.

## OEM Bumper Removal

### 1. Step 1: Open the Hood and Disconnect the Vehicle Battery

Open the hood of the vehicle and disconnect the vehicle battery or batteries. From under the vehicle, disconnect the bumper wiring harness from the vehicle wiring harness.

### 2. Step 2: Remove Radiator Cover

Locate the (12) plastic push pins (6) per side securing the radiator cover. Using a flat blade screwdriver, pull the head of the push pins up, remove push pins, and lift the radiator cover off. This will allow access to the bolts securing the top of the grille.

### 3. Step 3: Remove Top Grille Screws

Remove the (4) screws (2) per side securing the top of the grille.

### 4. Step 4: Remove Bumper Valance Screw

Remove the screw (1) per side securing the bumper valance.

#### 5. **Step 5: Remove Bumper Valance**

Working from side to side, gently pull outward on the valance to unsnap the clips and remove the valance.

#### 6. **Step 6: Remove Bottom Grille Screws**

Remove the (4) screws (2) per side securing the bottom of the grille.

#### 7. **Step 7: Remove Grille**

Working from side to side, gently pull outward on the grille to unsnap the clips and remove the grille.

#### 8. **Step 8: Remove Outer Bumper Support Bar**

On each side of the vehicle, remove (1) bolt securing the outer bumper support bar to the factory bumper and loosen the (2) bolts securing the opposite end of the support bar to the vehicle frame body mount bracket.

Retain the outer bolts as they will be used to secure the bumper support bracket to the bumper replacement shell.

#### 9. **Step 9: Remove Bumper and Bracket Assembly**

With assistance, support the bumper and remove the bolts (2) per side securing the bumper and bracket assembly to the frame. Remove the bumper from the vehicle.

### FAQ

- **Q: Where can I find installation videos?**

A: You can find installation videos at <http://www.gorhino.com/Installation-Videos>.

- **Q: How long does the installation take?**

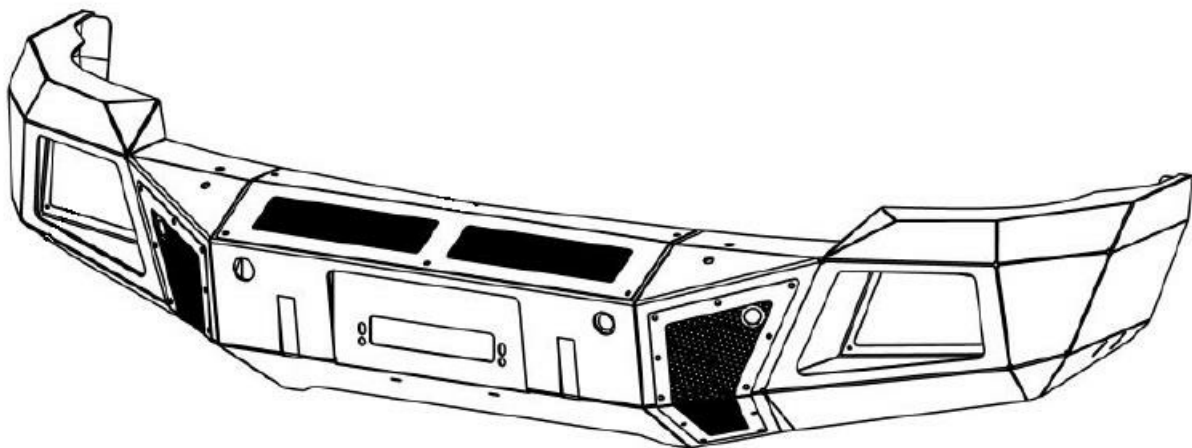
A: The estimated time for installation is 2 hours.

- **Q: Who should I contact for installation service?**

A: Please contact the authorized distributor from whom you purchased the product or an authorized installation service company. You can find the contact information by calling toll-free 1-888-427-4466.

### INSTALLATION INSTRUCTIONS

- **PART NO.** 24179T
- **PRODUCT DESCRIPTION:** BR6 FRONT BUMPER REPLACEMENT
- **APPLICATION:** CHEVROLET SILVERADO 1500 2/4 WD



### PRODUCT SAFETY & LEGAL DISCLAIMER

- IMPORTANT READ ALL INSTRUCTIONS CAREFULLY BEFORE INSTALLING, FAILURE TO DO SO MAY CAUSE PERSONAL INJURY OR DAMAGE TO PRODUCT AND/OR PROPERTY.
- Review the product package and contents prior to beginning the installation. Take care when opening the packaging and removing items. If a return is needed you will want to return the product in its original packaging if possible.
- This instruction guide is provided as a GENERAL installation guide, some vehicles vary dimensionally and may require additional steps.
- Test fit the product on the vehicle prior to any third party modifications and or finishing. The manufacturer and/or distributors do not accept responsibility for third party charges, labor and or third part replacement modifications. Some modifications may void the factory warranty.
- Exercise due-diligence when installing this product. The manufacturer and distributors of this product do not accept any responsibility for vehicle damage or personal injury resulting from the installation of this product. Careless installation and operation can result in serious injury or equipment damage.
- This product is for general off-road use. All liability for installation and use rests with the owner/operator.
- **INSTALLER:** Once installation is complete, please return this guide along with other documentation included in this product back to the consumer for future reference. The manufacturer/distributors of this product do not guarantee this particular version will be available at a later date.

## **INJURY HAZARD**

Please complete a shop and tool inspection prior to beginning the installation.

- Always make sure you have a clean, dry and well lit work area.
- Always remove jewelry, loose fitting clothing and wear protective gloves and eye protection.
- Always use extreme caution when jacking or raising a vehicle for work. Set the emergency brake and use tire/wheel blocks and jack stands. Refer to the vehicle manufacturer hand book. Utilize the vehicle manufacturers designated lifting points.
- Always use appropriate and adequate care in lifting parts during disassembly and installation. Seek help in lifting heavy or large items into place. Utilize jacks and or lifting devices when available.
- Always insure products are secure during disassembly and installation.
- Always wear eye protection and take steps to protect any exposed skin during the installations. Drilling, cutting and grinding plastic and metal may create flying particles that can cause injury.
- Always use extreme caution when drilling, cutting and or grinding on a vehicle. Thoroughly inspect the area to be drilled, on both sides of material, prior to modification and relocate any objects that may become damaged.
- Always assemble and tighten all fasteners per the installation instructions.
- Always route electrical cables carefully. Avoid moving parts, parts that may become hot and rough or sharp edges.
- Always insulate and protect all exposed wiring and electrical connections.

## **MAINTENANCE AND CARE**

- Always perform regular inspections and maintenance on mounts and related fasteners.
- Periodically check and tighten all fasteners.
- Stripped, fractured, or bent fasteners must be replaced.

- After washing the vehicle make sure to fully dry all surfaces.
- In areas with cold temperatures make sure to wash the product often to remove harmful materials used on road ways.
- Never use abrasive cleaners or polish compounds. Clean with a gentle soap and water. If you use wax use a non-abrasive automotive wax such as pure carnauba wax.

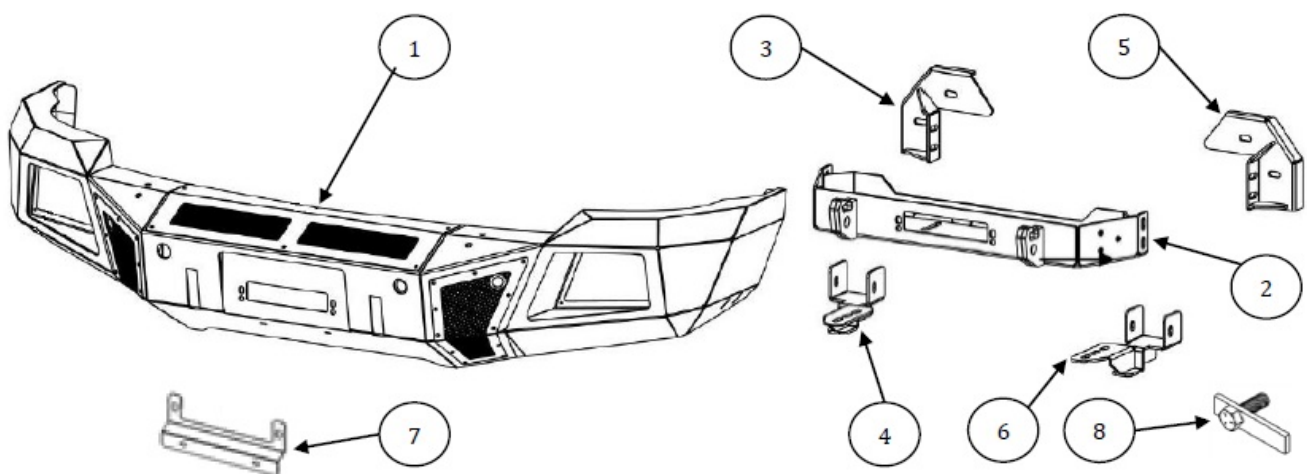
## WARNING

Some products have been designed to work together with factory rear sensor systems, factory forward facing sensor systems and factory air bags.

- Installation of some of these products may alter the factory sensor system performance.
- Factory sensors may read shackles or hooks protruding from the fairlead and or tow hooks.
- All sensor testing is completed by Go Rhino Products and or third party testing labs on modified vehicles.
- Sensor sensitivity, factory sensor housing, orientation, and operating conditions are all variables that will influence functionality of the sensors.
- Installation of some product may effect the factory air bag systems.
- Some products allow the use of third party products such as winches, shackles, hooks, etc. Follow the respective manufacturers operating instructions for use with our products.
- Make sure to fully understand the product, it's intended use and operation prior to use.
- Above all... be safe!

## PARTS INCLUDED IN THIS LIST:

ITEM	QTY.	DESCRIPTION	ITEM	QTY.	DESCRIPTION	ITEM	QTY.	DESCRIPTION
1	1	Bumper Replacement Shell		1	KTE-G24179TG4	19	26	3/8" Flat washer
2	1	Mounting plate / Winch Tray	9	1	1/2 x 1 1/2" Hex head bolt	20	24	3/8" Lock Washer
3	1	Passenger Side Frame Bracket	10	1	1/2 x 1 1/2" Carriage head bolt	21	14	1/4" Flat washer
4	1	Passenger Side Auxiliary Bracket	11	1	1/2" Flat washer	22	2	1/4" Lock nut
5	1	Driver Side Frame Bracket	12	4	1/2" Lock washer			
6	1	Driver Side Auxiliary Bracket	13	2	1/2" Hex nut		1	KTE-G143402G4
7	1	License Plate Bracket	14	13	M10 Hex nut	23	4	1/4 x 3/4" Sems bolt
8	4	1/2" Bolt Plate	15	6	M10 Flat washer			
			16	6	M10 Lock washer			
			17	10	3/8 x 1 1/4" Hex head bolt			
			18	12	3/8" Hex nut			



Go Rhino recommends you, the installer, read this installation instruction manual from front to back before installing the product. You may also click here to view an installation video or visit

<http://www.gorhino.com/Installation-Videos>.

## TOOLS NEEDED FOR INSTALLATION:

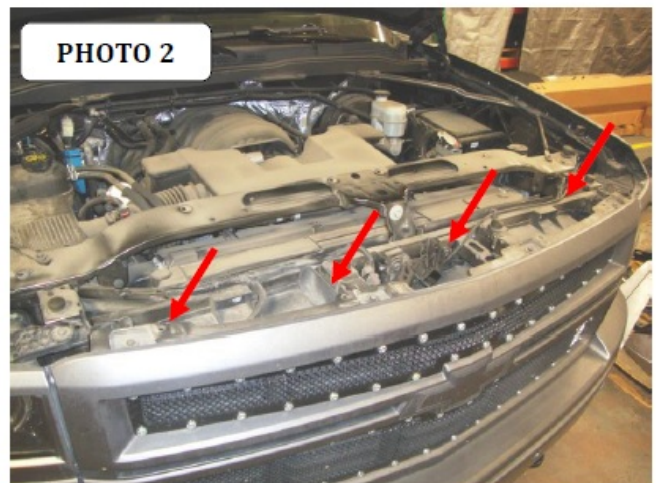
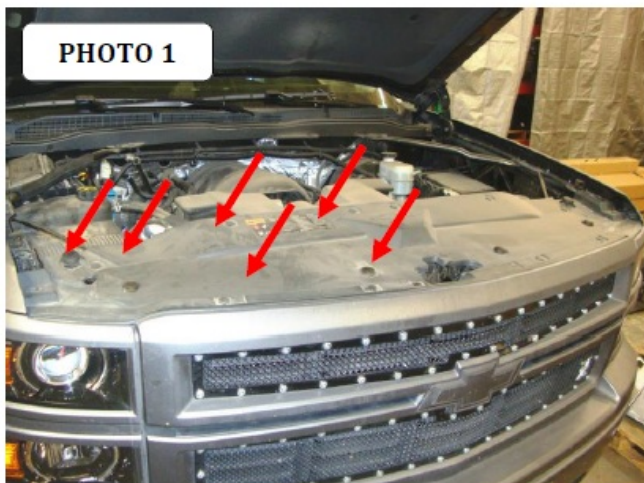


- 7mm, 10mm, 15mm, 18mm, 7/16", 9/16" & 3/4" Sockets
- 8mm, 10mm, 15mm, 18mm, 7/16", 9/16" & 3/4" Wrenches
- T10 & T15 TORX Driver
- Slotted Blade Screw Driver
- 5/32" Hex Key
- Ratchet, Ratchet Extensions & Swivel Joint Adapter

#### **ESTIMATED TIME FOR INSTALLATION: 2 Hour**

If you need installation service for your new product, call the authorized distributor from whom you purchased the product or an authorized installation service company which can be found by calling toll free 1-888-427-4466 OEM Bumper Removal

1. **Step-1** Open the hood and disconnect the vehicle battery or batteries. From under the vehicle disconnect the bumper wiring harness from the vehicle wiring harness.
2. **Step-2** Locate the (12) plastic push pins (6) per side securing the radiator cover. Using a flat blade screw driver, pull the head of the push pins up, remove push pins and lift radiator cover off. This will allow access to the bolts securing the top of the grille, (Photo 1).
3. **Step-3** Remove the (4) screws (2) per side securing the top of the grille, (Photo 2).



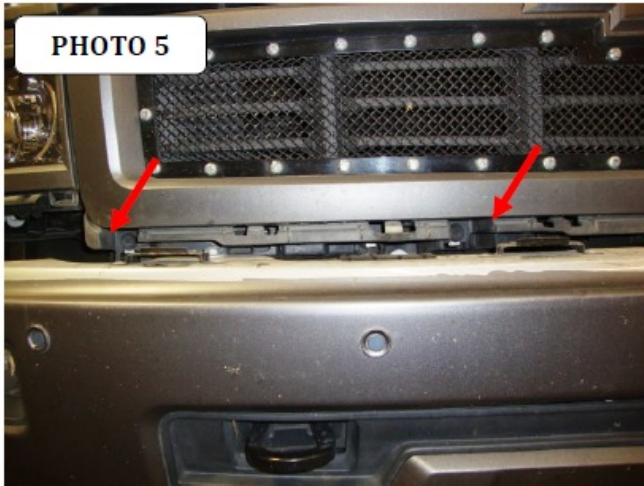
4. **Step-4** Remove the screw (1) per side securing the bumper valance, (Photo 3).
5. **Step-5** Working from side to side gently pull outward on the valance to unsnap the clips and remove the valance, (Photo 4).



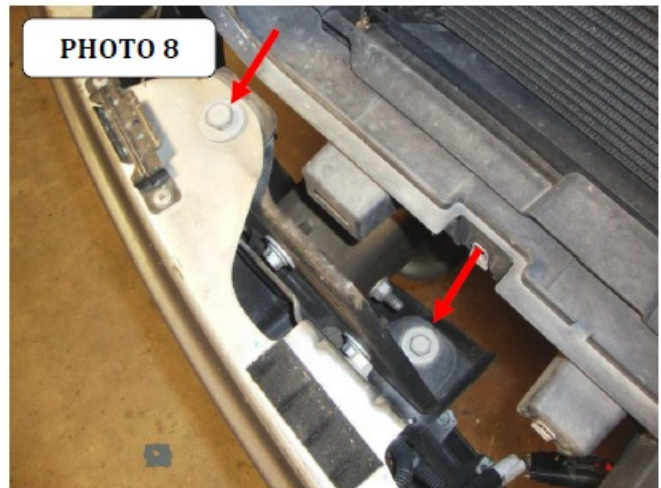
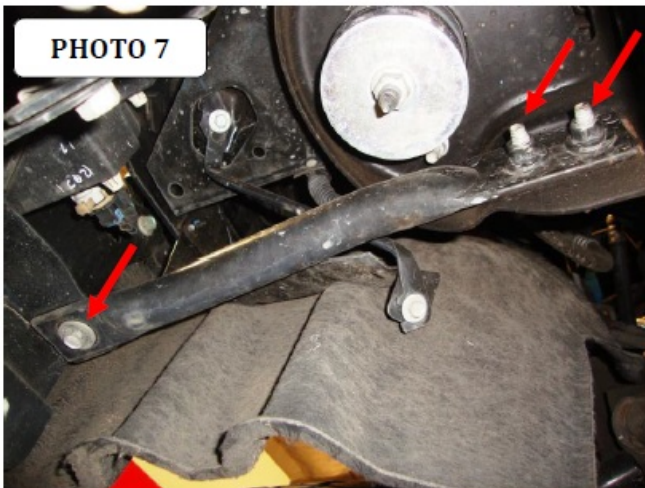
6. **Step-6** Remove the (4) screws (2) per side securing the bottom of the grille, (Photo 5).



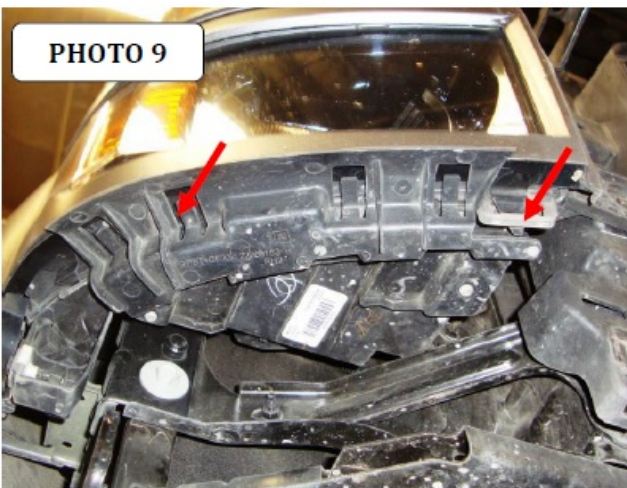
7. **Step-7** Working from side to side gently pull outward on the grille to unsnap the clips and remove the grille, (Photo 6).



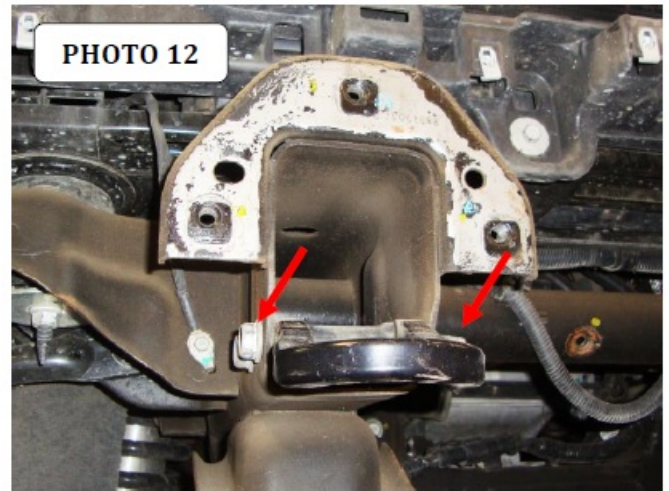
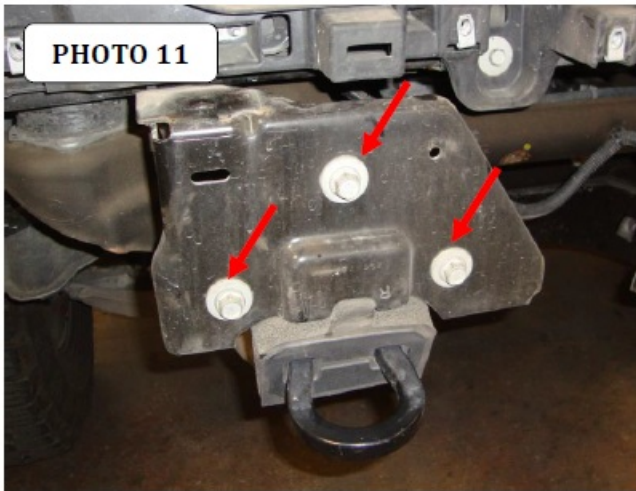
8. **Step-8** On each side of the vehicle, remove (1) bolt securing the outer bumper support bar to the factory bumper and loosen the (2) bolts securing the opposite end of the support bar to the vehicle frame body mount bracket, (Photo 7). Retain the outer bolts as they will be used to secure the bumper support bracket to the bumper replacement shell.
9. **Step-9** With assistance support the bumper, and remove the bolts (2) per side securing the bumper and bracket assembly to the frame, (Photo 8). Remove the bumper from the vehicle.



10. **Step-10** On each side of the vehicle, remove (2) TORX screws securing bumper valance corner support bracket to the headlight, (Photo 9).
11. **Step-11** On each side of the vehicle, remove (3) bolts from the back (not shown) securing the bumper valance side support bracket to the fender, (Photo 10).



12. **Step-12** On each side of the vehicle, remove (3) bolts securing the bumper bracket to the frame, (Photo 11). Retain the bolts as (2) of the bolts will be used to secure the bumper replacement frame brackets to the vehicle.
13. **Step-13** If equipped remove the nut and (2) bolts' securing the tow hooks to the frame, (Photo 12). Note: The tow hooks will not be reinstalled.
14. **Step-14** Reinstall the factory grille.



## INSTALLATION INSTRUCTIONS

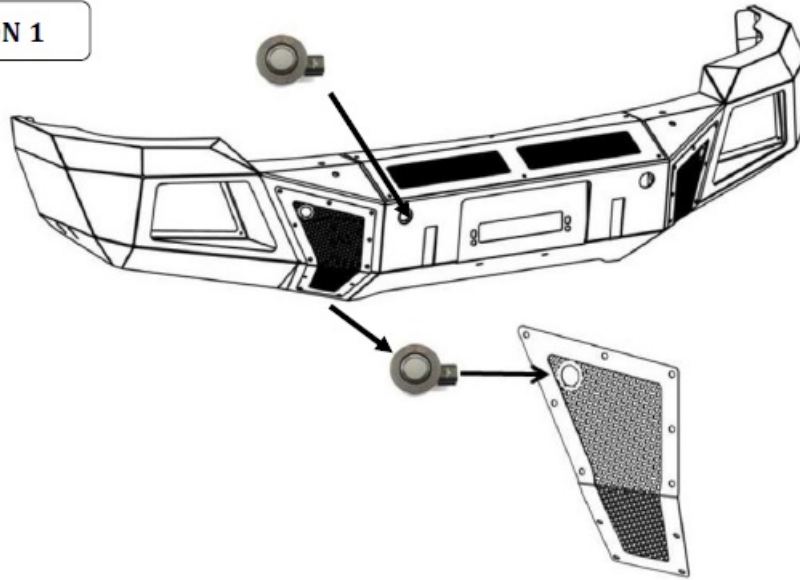
### BR5 Bumper Replacement Installation.

**Note:** If your vehicle is not equipped with front Park Assist install the supplied plastic plugs in the holes in the replacement bumper and vent covers and proceed to step 9.

1. **Step-1** If the vehicle is equipped with front Park Assist, disconnect the sensors from the factory bumper wiring harness and remove the wiring harness from the bumper.
2. **Step-2** Remove each sensor from the plastic bezel by gently spreading the bezel tabs and pulling out on the back of the sensor. Note: Do not push on the front of the sensor as this may damage the sensor.
3. **Step 3** Remove the sensor bezels from the factory bumper by depressing the tabs around the base and pushing the bezel out through the front of the bumper. Note: The sensors and bezels have to be positioned in the replacement bumper in the same location (inner and outer), (driver and passenger) as removed from the factory bumper.
4. **Step-4** Install the inner sensor bezels and sensors in the supplied bezel plates, (Illustration 1). From the side with applied tape, line up the protrusions on the bezel with the profile in the bezel plate; push the bezel through the profile in the plate until the tabs around the base lock in position, then install the sensor in the bezel. Note: The U notch in the sensor plates designate the top, and the V notch on the side position toward the center of the vehicle.
5. **Step-5** Install the outer sensor bezels and sensors in the driver and passenger vent covers, (Illustration 1). Line up the protrusions on the bezel with the profile in the vent cover; push the bezel through the profile in the vent cover until the tabs around the base lock in position, then install the sensor in the bezel. Do not install the vent cover at this time.



ILLUSTRATION 1



6. **Step-6** Prepare the inside of the replacement bumper surface where the inner bezel plates will be mounted with Isopropyl alcohol. A clean, dry surface is required in order for tape to stick properly.
7. **Step-7** Peel the backing off from the double sided tape to uncover the adhesive. From inside the replacement bumper position each bezel, sensor and bezel plate assembly, making sure the sensor bezel is centered in the hole provided in the replacement bumper.
8. **Step-8** Stick the assembly in place and apply firm pressure for about 30 seconds. The tape needs to bond with the mounting surface, and it needs pressure to do this. The bezel mounting plate will seem like it is stuck on, but continue pressing for at least 30 seconds. Note: At room temperature approximately 50% of ultimate bond strength will be achieved after 20 minutes, 90% after 24 hours and 100% after 72 hours.
9. **Step-9** Position the bumper replacement passenger side frame bracket up to the end of the frame, align the holes in the frame bracket with the factory bumper bracket attachment holes in the frame and secure the frame bracket to the frame using (2) of the factory bumper bracket bolts (Photo 1). Leave the bolts loose for final adjustment.
10. **Step-10** Install the passenger side auxiliary bracket by positioning the bracket on the sides of the frame, align the holes in the auxiliary bracket with the tow hook bolt holes and secure the auxiliary bracket to the frame using (2) ½" T-Bolts, (2) ½" flat washers, (2) ½" lock washers and (2) ½" hex nuts, (Photo 2). Leave the nuts and T-Bolts loose for final adjustment. Repeat steps 1 & 2 to install the driver side frame and auxiliary bracket.

PHOTO 1

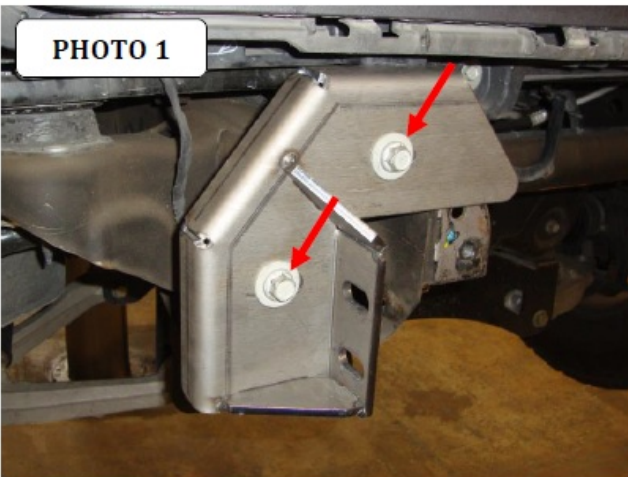
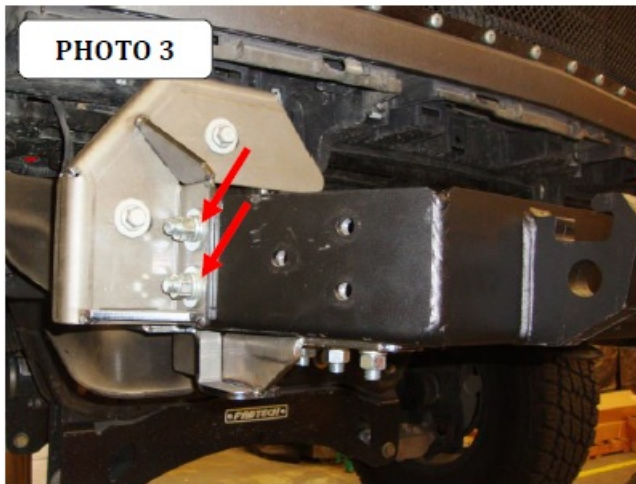


PHOTO 2

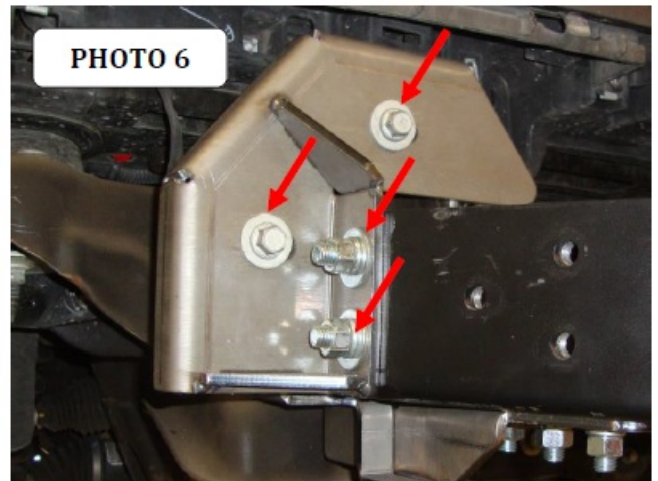


11. **Step-11** Position the mounting plate/winch tray on top of the auxiliary brackets. Align the holes and secure the mounting plate/winch tray to each frame bracket using (2) ½" x 1 ½" carriage bolts, (2) ½" flat washers, (2) ½" lock washers and (2) ½" hex nuts, and to each auxiliary bracket using (3) ½" x 1 ½" carriage bolts, (3) ½" flat

washers, (3) ½" lock washers and (3) ½" hex nut, (Photo 3 & 4).



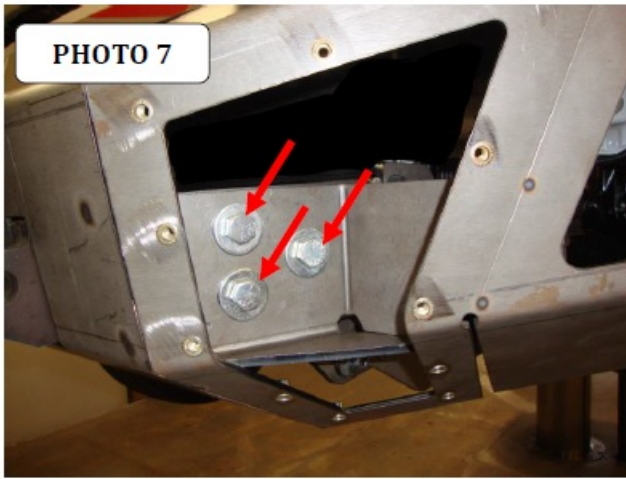
12. **Step-12** Position the front edge of the mounting plate/winch tray 8 5/8" forward from the face of the frame, (Photo 5). Center and level the mounting plate/winch tray with the vehicle then tighten the factory bolts securing the frame brackets, and the supplied nuts and bolts securing the mounting plate/winch tray to the frame brackets, (Photo 6). Do not tighten the auxiliary bracket nuts and bolts at this time.



If you are installing a winch, place the winch in the winch tray and refer to the winch manufacturer's instructions for installation. Do not install the fairlead at this time.

13. **Step-13** With assistance lift the bumper shell up to the vehicle, align the holes in the bumper shell brackets with the weld nuts on the mounting plate/winch tray and secure the bumper shell to each side of the mounting plate/winch tray using (3) ½" x 1 1/2" hex bolts, (3) ½" lock washers and (3) ½" flat washers, (Photo 7). Leave the bolts loose for final adjustment.
14. **Step-14** Align the holes and attach each factory bumper support bar to each of the bumper shell support brackets using the factory M10 bolt, (1) M10 flat washer, (1) M10 lock washer and (1) M10 hex nut, (Photo 8).





15. **Step-15** With assistance, adjust and hold the bumper shell visual alignment position, then tighten all factory and supplied nuts and bolts. Note: It may be necessary to loosen the nuts and bolts securing the mounting plate/winch tray and brackets.

If installing a winch, install the roller fairlead to the bumper shell at this time. Refer to the winch manufacturer's instructions for installation. If installing an optional light bar, install the light bar to the bumper replacement at this time. Refer to the light bar instructions for installation.

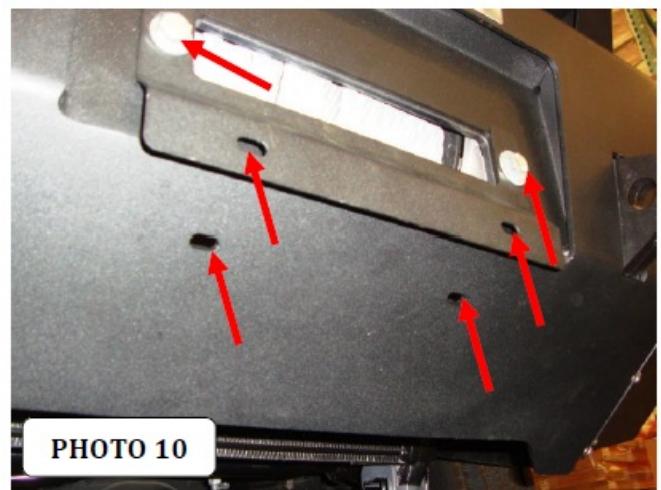
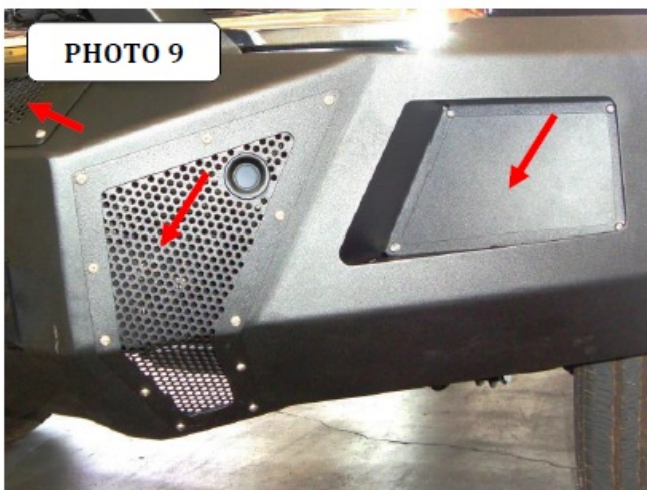
16. **Step-16** Install the driver and passenger side front vent covers and winch cover to the bumper shell using the supplied  $\frac{1}{4}$ " x  $\frac{3}{4}$ " button head bolts, (Photo 9). Note: Do not over tighten bolts, reference tightening torque (71 in. lbs.).

If your vehicle is equipped with front park assist reconnect the factory bumper wiring harness to the sensors and to the vehicle wiring harness prior to installing the winch cover.

17. **Step-17** Install the flush mount light pods to the bumper shell using (4)  $\frac{1}{4}$ " x  $\frac{3}{4}$ " button head bolts and (4)  $\frac{1}{4}$ " nylon lock nuts, (Photo 9).

18. **Step-18** Re-connect the vehicle battery or batteries.

If your state law requires a front license plate, attach the license plate bracket to the holes in the face of the bumper shell, using the supplied  $\frac{3}{8}$ " bolts, washers and nuts, and the license plate to the (2) obround holes in the license plate bracket using the supplied  $\frac{1}{4}$ " bolts and nuts, (Photo 10).



If installing a winch, attach the license plate directly to the (2) obround holes in the lower face of the bumper shell using the supplied  $\frac{1}{4}$ " bolts and nuts, (Photo 10).

Remember to check and retighten all factory and supplied nuts and bolts periodically.

## LIMITED WARRANTY



Go Rhino warrants to Buyer that for a period of five (5) years from the date of shipment of the product(s) ("Warranty Period") for black finishes and chrome finishes, that such products will materially conform to the specifications set forth in Go Rhino's specifications in effect as of the date of shipment(s) and will be free from material defects in material workmanship.

Go Rhino warrants to Buyer that for the life of the product(s) from the date of shipment of the product(s) ("Warranty Period") for polished stainless steel finished products purchased after April 2004, that such products will materially conform to the specifications set forth in Go Rhino's specifications in effect as of the date of shipments and will be free from material defects in material workmanship.

Warranty claims must be accompanied with the original invoice and photos of the product. It is the customer's responsibility to clean regularly and protect finish with regular applications of a nonabrasive polish that is compatible with the product's finish.

This warranty covers the cost of the product only and does not include the cost of removal, installation, third party modifications or shipping of the product. In no event shall Go Rhino be liable to buyer or any third party for any damage or harm caused by the product or use thereof, regardless of whether such damages were foreseeable and whether or not Go Rhino has been advised of the possibility of such damages, notwithstanding the failure of any agreed or other remedy of its essential purpose. This warranty is void if the product shows signs of alteration, misuse, mishandling, improper care, neglect, improper application and/or damage due to improper installation.

With respect to any such product(s) during the limited warranty period, Go Rhino shall, in its sole discretion, either: (i) provide a one-time repair or replacement of such products (or the defective part) or (ii) credit or refund the price of such products at the pro rata contract rate provided that, if Go Rhino so requests, Buyer shall, at Go Rhino's expense, return such product(s) to Go Rhino. The remedies shall be the Buyer's sole and exclusive remedy and Go Rhino's entire liability for any breach of the limited warrant(ies).

Go Rhino disclaims all other warranties except to the extent that any such warranty cannot be validly disclaimed under applicable law.

#### **Finish Limited Warranty:**

- Limited lifetime on stainless steel products (after April 2004)
- 5 year warranty on black powder coat products
- 5 year warranty on chrome products
- This warranty does not cover exposed welds

Finish warranty covers peeling, flaking, or cracking. Washing all finishes regularly with car wash soap and rinsing well with water is the best method for maintaining the finish on your products. You must also protect the finish with nonabrasive automotive wax on a regular basis. The use of any compound which contains abrasives becomes a self-defeating exercise as the compound scratches the finish and opens it to corrosion. The use of harsh chemicals used to remove bugs and tar may also cause the finish to fail and should be avoided.

If you are unsatisfied with your purchase please contact the establishment you purchased the product from.

If you need to place a warranty claim or need assistance, the Go Rhino customer service team will answer any questions you may have. Please contact the Go Rhino customer service team at 1-888-427-4466 during normal business hours Monday thru Friday 7 am to 5 pm PST. You may also email [warranty@gorhino.com](mailto:warranty@gorhino.com). In order to better serve you please provide a copy of the original invoice / receipt, a photo of the issue you are experiencing and a photo of the vehicle the product is installed on.

All warranty returns must have an approved RGA number. The RGA number must be clearly marked on the exterior of the return package. All approved warranty returns must be shipped to Go Rhino Products, 1002 Carriers Drive, Laredo, Texas 78045.

## PRODUCT REGISTRATION

Please remember to register your new purchase. You may register your product at [www.gorhino.com](http://www.gorhino.com). Registering your product may help speed any future warranty or customer service inquiries.

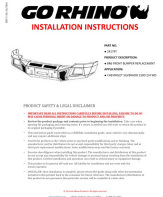
### Thank you again for purchasing from Go Rhino Products

Please take a few minutes to view additional products for your vehicle and more at [GORHINO.com](http://GORHINO.com). These installation instructions are available on the Go Rhino web site along with installation videos for many of our products.









[www.gorhino.com](http://www.gorhino.com)  
[www.bigcountryauto.com](http://www.bigcountryauto.com)  
[www.gorhinopd.com](http://www.gorhinopd.com)

© 2016 Go Rhino Products. All rights reserved

## Documents / Resources

	<p><a href="#">GO RHINO BR6 FRONT BUMPER REPLACEMENT</a> [pdf] Instruction Manual BR6 Front Bumper Replacement, BR6, Front Bumper Replacement, Bumper Replacement, Replacement</p>
--	--

## References

-  [Go Rhino](#)
-  [Big Country Truck Accessories](#)
-  [Big Country Truck Accessories](#)
-  [Go Rhino](#)
-  [Go Rhino](#)
-  [Media Resource Library](#)
-  [Go Rhino Public Safety Division](#)
-  [Go Rhino Public Safety Division](#)
- [User Manual](#)