



# GO RHINO 6944356 RB V-Series Bracket Kit Installation Guide

[Home](#) » [GO RHINO](#) » GO RHINO 6944356 RB V-Series Bracket Kit Installation Guide 

## Contents

- [1 GO RHINO 6944356 RB V-Series Bracket Kit](#)
- [2 PRODUCT SAFETY & LEGAL DISCLAIMER](#)
- [3 INSTALLATION INSTRUCTIONS](#)
- [4 MAINTENANCE AND CARE](#)
- [5 PARTS INCLUDED IN THIS LIST](#)
- [6 TOOLS NEEDED FOR INSTALLATION](#)
- [7 LIMITED WARRANTY](#)
- [8 PRODUCT REGISTRATION](#)
- [9 Documents / Resources](#)
- [10 Related Posts](#)



## GO RHINO 6944356 RB V-Series Bracket Kit



## PRODUCT SAFETY & LEGAL DISCLAIMER

- IMPORTANT READ ALL INSTRUCTIONS CAREFULLY BEFORE INSTALLING, FAILURE TO DO SO MAY CAUSE PERSONAL INJURY OR DAMAGE TO THE PRODUCT AND/OR PROPERTY.
- Review the product package and contents prior to beginning the installation. Take care when opening the packaging and removing items. If a return is needed you will want to return the product in its original packaging

if possible.

- This instruction guide is provided as a GENERAL installation guide, some vehicles vary dimensionally and may require additional steps.
- Test fit the product on the vehicle prior to any third-party modifications and or finishing. The manufacturer and/or distributors do not accept responsibility for third-party charges, labor, and or third-party replacement modifications. Some modifications may void the factory warranty.
- Exercise due diligence when installing this product. The manufacturer and distributors of this product do not accept any responsibility for vehicle damage or personal injury resulting from the installation of this product. Careless installation and operation can result in serious injury or equipment damage.
- This product is for general off-road use. All liability for installation and use rests with the owner/operator.
- **INSTALLER:** Once installation is complete, please return this guide along with other documentation included in this product back to the consumer for future reference. The manufacturer/distributors of this product do not guarantee this particular version will be available at a later date.

## INSTALLATION INSTRUCTIONS

### INJURY HAZARD

Please complete a shop and tool inspection prior to beginning the installation.

- Always make sure you have a clean, dry, and well-lit work area.
- Always remove jewelry, and loose-fitting clothing and wear protective gloves and eye protection.
- Always use extreme caution when jacking or raising a vehicle for work. Set the emergency brake and use tire/wheel blocks and jack stands. Refer to the vehicle manufacturer handbook. Utilize the vehicle manufacturer-designated lifting points.
- Always use appropriate and adequate care in lifting parts during disassembly and installation. Seek help in lifting heavy or large items into place. Utilize jacks and or lifting devices when available.
- Always ensure products are secure during disassembly and installation.
- Always wear eye protection and take steps to protect any exposed skin during the installation. Drilling, cutting, and grinding plastic and metal may create flying particles that can cause injury.
- Always use extreme caution when drilling, cutting, and or grinding on a vehicle. Thoroughly inspect the area to be drilled, on both sides of the material, prior to modification and relocate any objects that may become damaged.
- Always assemble and tighten all fasteners per the installation instructions.
- Always route electrical cables carefully. Avoid moving parts, parts that may become hot and rough or have sharp edges.
- Always insulate and protect all exposed wiring and electrical connections.

## MAINTENANCE AND CARE

- Always perform regular inspections and maintenance on mounts and related fasteners.
- Periodically check and tighten all fasteners.
- Stripped, fractured, or bent fasteners must be replaced.
- After washing the vehicle make sure to fully dry all surfaces.

- In areas with cold temperatures make sure to wash the product often to remove harmful materials used on roadways.
- Never use abrasive cleaners or polish compounds. Clean with a gentle soap and water. If you use wax use a non-abrasive automotive wax such as pure carnauba wax.

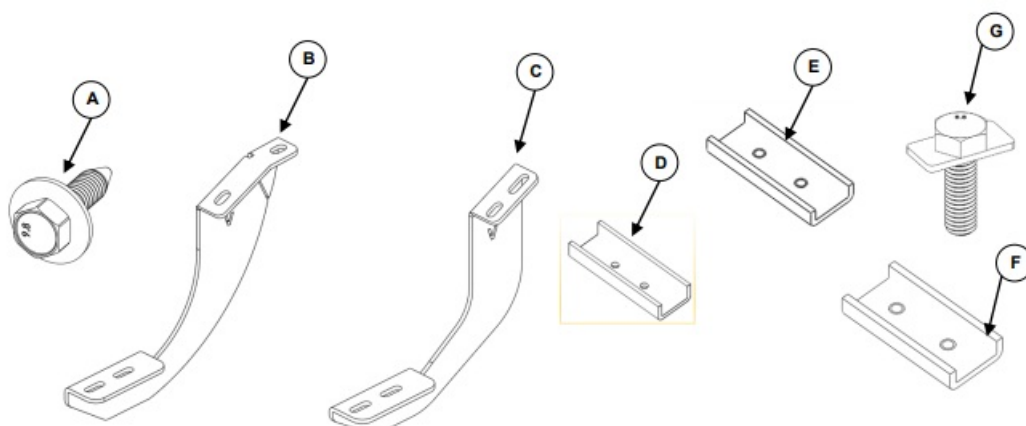
## WARNING

Some products have been designed to work together with factory rear sensor systems, factory forward-facing sensor systems, and factory airbags.

- Installation of some of these products may alter the factory sensor system performance.
- Factory sensors may read shackles or hooks protruding from the fairlead and or tow hooks.
- All sensor testing is completed by Go Rhino Products and or third-party testing labs on modified vehicles.
- Sensor sensitivity, factory sensor housing, orientation, and operating conditions are all variables that will influence the functionality of the sensors.
- Installation of some products may affect the factory airbag systems.
- Some products allow the use of third-party products such as winches, shackles, hooks, etc. Follow the respective manufacturers' operating instructions for use with our products.
- Make sure to fully understand the product, its intended use, and operation prior to use.
- Above all... be safe!

## PARTS INCLUDED IN THIS LIST

ITEM	QTY.	DESCRIPTION	ITEM	QTY.	DESCRIPTION
A	16	M8 x 30 SEMS Bolts	E	1 p r	RB20S U-Channel
B	1 p r	Front Bracket (driver shown)	F	1 p r	RB10S U-Channel
C	3 p r	Center/Rear Bracket (driver shown)	G	16	M8 Bolt plate
D	1 p r	RB U-Channel			



Go Rhino recommends you, the installer, read this installation instruction manual from front to back before installing the product. You may also click here to view an installation video or visit <http://www.gorhino.com/Installation-Videos>.

## TOOLS NEEDED FOR INSTALLATION

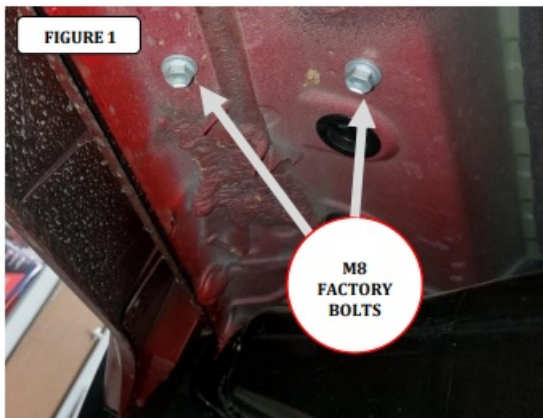
- 13 mm Socket & Wrench
- 12mm Socket or Wrench
- Ratchet & Extension

### ESTIMATED TIME FOR INSTALLATION: 1 Hour

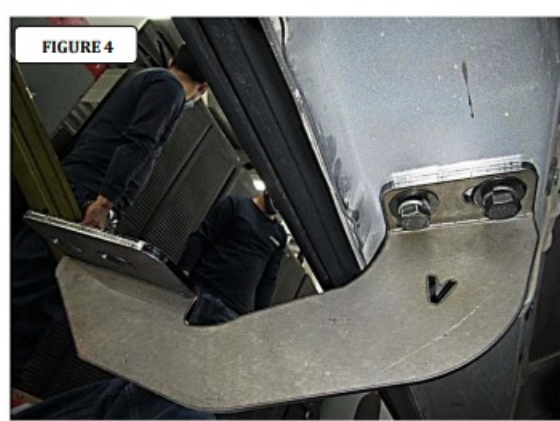
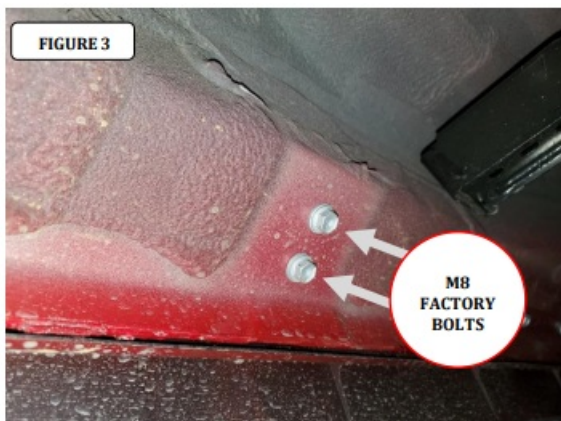
If you need installation service for your new product, call the authorized distributor from whom you purchased the product or an authorized installation service company which can be found by calling toll-free 1-888-427-4466

## INSTALLATION INSTRUCTIONS

- **Step-1** Begin the installation on the driver side, this installation uses (4) brackets per side. Starting at the front of the vehicle, locate and remove the (2) M8 factory bolts in the underside of the body panel,(FIGURE 1).
- **Step-2** Attach the driver-side Front bracket to the underside of the body using (2) M8 x 30mm SEMS bolt, (1), (FIGURE 2). Leave the bolts loose for final adjustment.



- **Step-3** Locate and remove the other (2) M8 factory bolts in the underside of the body panel, at the center and rear of the cab (FIGURE 3).
- **Step-4** Attach the remaining brackets to the underside of the body using (2) M8 x 30mm SEMS bolts by bracket, (1), (FIGURE 4). Leave the bolts loose for final adjustment.



- **Step 5** Place the running board on the brackets. Follow the running board install instructions to attach the side step to the mounting brackets.
- **Step-6** Align the running board with the vehicle and tighten all bolts securing the running board to the front, center, and rear brackets. Repeat the above steps to install the passenger side brackets and running board.

Remember to check and retighten the nuts and bolts every six months.



## LIMITED WARRANTY

Go Rhino warrants to Buyer that for a period of five (5) years from the date of shipment of the product(s) ("Warranty Period") for black finishes and chrome finishes, such products will materially conform to the specifications set forth in Go Rhino's specifications in effect as of the date of shipment(s) and will be free from material defects in material workmanship.

Go Rhino warrants to Buyer that for the life of the product(s) from the date of shipment of the product(s) ("Warranty Period") for polished stainless steel finished products purchased after April 2004, such products will materially conform to the specifications set forth in Go Rhino's specifications in effect as of the date of shipments and will be free from material defects in material workmanship.

Warranty claims must be accompanied by the original invoice and photos of the product. It is the customer's responsibility to clean regularly and protect the finish with regular applications of a nonabrasive polish that is compatible with the product's finish.

This warranty covers the cost of the product only and does not include the cost of removal, installation, third-party modifications, or shipping of the product. In no event shall Go Rhino be liable to the buyer or any third party for any damage or harm caused by the product or use thereof, regardless of whether such damages were foreseeable and whether or not Go Rhino has been advised of the possibility of such damages, notwithstanding the failure of any agreed or another remedy of its essential purpose. This warranty is void if the product shows signs of alteration, misuse, mishandling, improper care, neglect, improper application, and/or damage due to improper installation.

With respect to any such product(s) during the limited warranty period, Go Rhino shall, in its sole discretion,



either: (i) provide a one-time repair or replacement of such products (or the defective part) or (ii) credit or refund the price of such products at the pro rata contract rate provided that, if Go Rhino so requests, Buyer shall, at Go Rhino's expense, return such product(s) to Go Rhino. The remedies shall be the Buyer's sole and exclusive remedy and Go Rhino's entire liability for any breach of the limited warranty (ies).

Go Rhino disclaims all other warranties except to the extent that any such warranty cannot be validly disclaimed under applicable law.

### **Finish Limited Warranty**

- Limited lifetime on stainless steel products (after April 2004)
- 5-year warranty on black powder coat products
- 5-year warranty on chrome products
- This warranty does not cover exposed welds.

Finish warranty covers peeling, flaking, or cracking. Washing all finishes regularly with car wash soap and rinsing well with water is the best method for maintaining the finish on your products. You must also protect the finish with nonabrasive automotive wax on a regular basis. The use of any compound that contains abrasives becomes a self-defeating exercise as the compound scratches the finish and opens it to corrosion. The use of harsh chemicals to remove bugs and tar may also cause the finish to fail and should be avoided.

If you are unsatisfied with your purchase please contact the establishment you purchased the product from. If you need to place a warranty claim or need assistance, the Go Rhino customer service team will answer any questions you may have. Please contact the Go Rhino customer service team at 1-888-427-4466 during normal business hours Monday through Friday 7 am to 5 pm PST. You may also email [warranty@gorhino.com](mailto:warranty@gorhino.com). In order to better serve you please provide a copy of the original invoice/receipt, a photo of the issue you are experiencing, and a photo of the vehicle the product is installed on.

All warranty returns must have an approved RGA number. The RGA number must be clearly marked on the exterior of the return package. All approved warranty returns must be shipped to Go Rhino Products, 1002 Carriers Drive, Laredo, Texas 78045.

### **PRODUCT REGISTRATION**

Please remember to register your new purchase. You may register your product at [www.gorhino.com](http://www.gorhino.com).

Registering your product may help speed up any future warranty or customer service inquiries.

Thank you again for purchasing from Go Rhino Products

Please take a few minutes to view additional products for your vehicle and more at [GORHINO.com](http://GORHINO.com)


These installation instructions are available on the Go Rhino website along with installation videos for many of our products.

[www.gorhino.com](http://www.gorhino.com)

[www.bigcountryauto.com](http://www.bigcountryauto.com)

[www.gorhinopd.com](http://www.gorhinopd.com)

© 2016 Go Rhino Products. All rights reserved

	<p><a href="#">GO RHINO 6944356 RB V-Series Bracket Kit</a> [pdf] Installation Guide</p> <p>6944356 RB V-Series Bracket Kit, 6944356, RB V-Series Bracket Kit, V-Series Bracket Kit, Bracket Kit</p>
--	--